

ARKANSAS STATE AT GEORGIA SOUTHERN



2/18/2016

Statesboro, GA (Hanner Fieldhouse)

FINAL STATS

Arkansas State

(20-3, 14-0)

79

Georgia Southern

(7-16, 4-10)

52

Start Time: 5:00 PM

Officials: Mark McClenney, Kerry Pierre, An-Jamilah Gregory

Attendance: 0

Official Basketball Box Score -- Game Totals -- Final Statistics
Arkansas State vs Georgia Southern
2/18/2016 5:00 PM at Statesboro, GA (Hanner Fieldhouse)

Arkansas State 79 - 20-3, 14-0

| ## | Player | S | Total | | | Rebounds | | | PF | TP | A | TO | Blk | Stl | Min |
|--------|--------------------|---|--------|------|--------|----------|---------|---------|----|----|----|----|-----|-----|-----|
| | | | FG-FGA | 3PT | FG-FGA | FT-FTA | Off Reb | Def Reb | | | | | | | |
| 01 | BRADSHAW,LAUREN | f | 2-6 | 0-0 | 3-4 | 2 | 1 | 3 | 2 | 7 | 0 | 3 | 1 | 1 | 24 |
| 03 | BROWN-HAYWOOD,KHAI | f | 9-15 | 4-7 | 8-10 | 2 | 8 | 10 | 3 | 30 | 2 | 1 | 0 | 2 | 35 |
| 05 | GILL,BRITNEY | g | 4-9 | 0-0 | 2-2 | 1 | 7 | 8 | 2 | 10 | 1 | 0 | 2 | 0 | 24 |
| 21 | FLANERY,JESSICA | g | 3-11 | 2-8 | 0-0 | 0 | 1 | 1 | 0 | 8 | 1 | 2 | 0 | 0 | 24 |
| 24 | GAMBLE,AUNDREA | g | 4-6 | 0-2 | 0-1 | 3 | 3 | 6 | 0 | 8 | 5 | 3 | 0 | 0 | 35 |
| 00 | WARREN,AALIYAH | | 1-2 | 0-0 | 0-0 | 2 | 1 | 3 | 0 | 2 | 0 | 0 | 0 | 1 | 6 |
| 10 | WESTBROOK,AKASHA | | 1-1 | 0-0 | 0-0 | 0 | 0 | 0 | 0 | 2 | 0 | 0 | 0 | 0 | 5 |
| 12 | RUFFINS,JAMIE | | 0-0 | 0-0 | 0-0 | 0 | 1 | 1 | 0 | 0 | 0 | 0 | 0 | 0 | 4 |
| 13 | FOWLER,BRITTANY | | 0-2 | 0-2 | 0-0 | 0 | 0 | 0 | 0 | 0 | 2 | 0 | 0 | 0 | 12 |
| 14 | HOLLOWAY,CHRISTYAL | | 1-2 | 0-1 | 0-0 | 0 | 0 | 0 | 0 | 2 | 1 | 1 | 0 | 1 | 5 |
| 20 | LADD,KYLIE | | 2-2 | 2-2 | 2-2 | 0 | 0 | 0 | 0 | 8 | 0 | 0 | 0 | 0 | 5 |
| 25 | OLIVER,DOMINIQUE | | 1-2 | 0-0 | 0-0 | 0 | 2 | 2 | 2 | 2 | 1 | 0 | 0 | 2 | 14 |
| 33 | OBINABO,OGO | | 0-0 | 0-0 | 0-0 | 0 | 0 | 0 | 2 | 0 | 1 | 1 | 1 | 0 | 7 |
| TEAM | | | | | | 1 | 1 | 2 | 0 | | 1 | | | | |
| TOTALS | | | 28-58 | 8-22 | 15-19 | 11 | 25 | 36 | 11 | 79 | 14 | 12 | 4 | 7 | 200 |

Deadball Rebounds: 1,0

| | | | | | | | | | |
|-------|-----------------|--------|-----------------|-------|--------------|-------|---------|------|--------|
| FG % | 1st Half: 14-30 | 46.7% | 2nd Half: 14-28 | 50.0% | Game: 28-58 | 48.3% | 4th Qtr | 7-15 | 46.7% |
| | 1st Qtr 9-17 | 52.9% | 2nd Qtr 5-13 | 38.5% | 3rd Qtr 7-13 | 53.8% | | | |
| 3FG % | 1st Half: 5-11 | 45.5% | 2nd Half: 3-11 | 27.3% | Game: 8-22 | 36.4% | 4th Qtr | 2-7 | 28.6% |
| | 1st Qtr 3-5 | 60.0% | 2nd Qtr 2-6 | 33.3% | 3rd Qtr 1-4 | 25.0% | | | |
| FT % | 1st Half: 9-12 | 75.0% | 2nd Half: 6-7 | 85.7% | Game: 15-19 | 78.9% | 4th Qtr | 5-5 | 100.0% |
| | 1st Qtr 3-3 | 100.0% | 2nd Qtr 6-9 | 66.7% | 3rd Qtr 1-2 | 50.0% | | | |

Georgia Southern 52 - 7-16, 4-10

| ## | Player | S | Total | | | Rebounds | | | PF | TP | A | TO | Blk | Stl | Min |
|--------|---------------------|---|--------|------|--------|----------|---------|---------|----|----|----|----|-----|-----|-----|
| | | | FG-FGA | 3PT | FG-FGA | FT-FTA | Off Reb | Def Reb | | | | | | | |
| 02 | ENGLISH-LURRY,TRELL | g | 1-4 | 0-2 | 1-1 | 0 | 0 | 0 | 1 | 3 | 1 | 1 | 0 | 0 | 12 |
| 11 | MCGOWAN,ANGEL | g | 5-19 | 4-9 | 3-4 | 3 | 1 | 4 | 1 | 17 | 0 | 2 | 0 | 1 | 35 |
| 23 | SAMS,ALEXIS | g | 2-8 | 2-5 | 1-4 | 1 | 2 | 3 | 0 | 7 | 3 | 3 | 0 | 2 | 35 |
| 25 | BUTLER,SIERRA | f | 0-3 | 0-1 | 0-0 | 1 | 3 | 4 | 3 | 0 | 0 | 2 | 1 | 0 | 19 |
| 35 | BUTLER,PATRICE | c | 5-9 | 2-3 | 1-2 | 2 | 3 | 5 | 3 | 13 | 0 | 2 | 0 | 1 | 23 |
| 03 | BURKE,ASHLEY | | 0-2 | 0-1 | 0-0 | 0 | 0 | 0 | 1 | 0 | 2 | 1 | 0 | 0 | 9 |
| 05 | FOULKS,ALEXIS | | 1-2 | 0-1 | 0-0 | 0 | 2 | 2 | 3 | 2 | 0 | 2 | 0 | 1 | 15 |
| 14 | JONES,BRIANA | | 0-3 | 0-0 | 0-0 | 1 | 1 | 2 | 0 | 0 | 2 | 0 | 0 | 0 | 13 |
| 20 | KIRKLAND,SIERRA | | 2-4 | 0-1 | 0-0 | 1 | 4 | 5 | 2 | 4 | 3 | 3 | 0 | 2 | 22 |
| 24 | BEAMON,RHEIN | | 2-2 | 0-0 | 0-0 | 0 | 0 | 0 | 0 | 4 | 0 | 0 | 0 | 0 | 14 |
| 44 | MARCUS,JESSICA | | 1-2 | 0-0 | 0-0 | 1 | 0 | 1 | 0 | 2 | 0 | 0 | 0 | 0 | 3 |
| TEAM | | | | | | 4 | 6 | 10 | 0 | | 3 | | | | |
| TOTALS | | | 19-58 | 8-23 | 6-11 | 14 | 22 | 36 | 14 | 52 | 11 | 19 | 1 | 7 | 200 |

Deadball Rebounds: 5,0

| | | | | | | | | | |
|-------|-----------------|-------|----------------|-------|--------------|-------|---------|------|-------|
| FG % | 1st Half: 10-29 | 34.5% | 2nd Half: 9-29 | 31.0% | Game: 19-58 | 32.8% | 4th Qtr | 5-11 | 45.5% |
| | 1st Qtr 5-14 | 35.7% | 2nd Qtr 5-15 | 33.3% | 3rd Qtr 4-18 | 22.2% | | | |
| 3FG % | 1st Half: 5-11 | 45.5% | 2nd Half: 3-12 | 25.0% | Game: 8-23 | 34.8% | 4th Qtr | 1-5 | 20.0% |
| | 1st Qtr 1-5 | 20.0% | 2nd Qtr 4-6 | 66.7% | 3rd Qtr 2-7 | 28.6% | | | |
| FT % | 1st Half: 3-5 | 60.0% | 2nd Half: 3-6 | 50.0% | Game: 6-11 | 54.5% | 4th Qtr | 3-6 | 50.0% |
| | 1st Qtr 1-2 | 50.0% | 2nd Qtr 2-3 | 66.7% | 3rd Qtr 0-0 | 0% | | | |

Officials: Mark McClenney, Kerry Pierre, An-Jamilah Gregory
 Technical Fouls: Arkansas State- None. Georgia Southern- None.
 Attendance: 0

| Score by periods | 1st | 2nd | 3rd | 4th | Total |
|------------------|-----|-----|-----|-----|-------|
| Arkansas State | 24 | 18 | 16 | 21 | 79 |
| Georgia Southern | 12 | 16 | 10 | 14 | 52 |

| Points | In Paint | Off T/O | 2nd Chance | Fast Break | Bench |
|--------|----------|---------|------------|------------|-------|
| ASU | 28 | 25 | 13 | 4 | 16 |
| GASOW | 22 | 17 | 13 | 4 | 12 |

Last FG - ASU 4th-01:01, GASOW 4th-00:26.
 Largest lead - Arkansas State by 31 4th-01:01; Georgia Southern by 2 1st-07:55
 ASU led for 34:55. GASOW led for 1:54. Game was tied for 3:11.

Score tied - 3 times
 Lead changed - 3 times

Official Basketball Box Score -- Game Totals -- First Half Statistics
Arkansas State vs Georgia Southern
2/18/2016 5:00 PM at Statesboro, GA (Hanner Fieldhouse)

Arkansas State, 42, 20-3, 14-0

| ## | Player | S | Total | | | Rebounds | | | PF | TP | A | TO | Blk | Stl | Min | | | |
|--------|--------------------|------|--------|---------|------|----------|-------|-------|-------|----|----|----|-----|-----|-----|-----|-----|-----|
| | | | FG | FGA | 3PT | FGA | FT | FTA | | | | | | | | Off | Def | Tot |
| 01 | BRADSHAW,LAUREN | f | 2 | 4 | 0 | 0 | 3 | 4 | 2 | 1 | 7 | 0 | 3 | 1 | 1 | 15 | | |
| 03 | BROWN-HAYWOOD,KHAI | f | 5 | 8 | 4 | 5 | 4 | 5 | 6 | 1 | 18 | 1 | 1 | 0 | 1 | 20 | | |
| 05 | GILL,BRITNEY | g | 3 | 6 | 0 | 0 | 2 | 2 | 3 | 1 | 8 | 0 | 0 | 2 | 0 | 12 | | |
| 21 | FLANERY,JESSICA | g | 2 | 7 | 1 | 5 | 0 | 0 | 1 | 0 | 5 | 1 | 1 | 0 | 0 | 14 | | |
| 24 | GAMBLE,AUNDREA | g | 1 | 2 | 0 | 1 | 0 | 1 | 0 | 2 | 3 | 1 | 0 | 0 | 0 | 20 | | |
| 00 | WARREN,AALIYAH | | 1 | 2 | 0 | 0 | 0 | 0 | 1 | 1 | 2 | 0 | 0 | 0 | 0 | 3 | | |
| 10 | WESTBROOK,AKASHA | | 0 | 0 | 0 | 0 | 0 | 0 | 0 | 0 | 0 | 0 | 0 | 0 | 0 | 0 | | |
| 12 | RUFFINS,JAMIE | | 0 | 0 | 0 | 0 | 0 | 0 | 0 | 0 | 0 | 0 | 0 | 0 | 0 | 0 | | |
| 13 | FOWLER,BRITTANY | | 0 | 0 | 0 | 0 | 0 | 0 | 0 | 0 | 0 | 1 | 0 | 0 | 0 | 7 | | |
| 14 | HOLLOWAY,CHRISTYAL | | 0 | 0 | 0 | 0 | 0 | 0 | 0 | 0 | 0 | 0 | 0 | 0 | 0 | 0 | | |
| 20 | LADD,KYLIE | | 0 | 0 | 0 | 0 | 0 | 0 | 0 | 0 | 0 | 0 | 0 | 0 | 0 | 0 | | |
| 25 | OLIVER,DOMINIQUE | | 0 | 1 | 0 | 0 | 0 | 0 | 0 | 1 | 0 | 1 | 0 | 0 | 1 | 7 | | |
| 33 | OBINABO,OGO | | 0 | 0 | 0 | 0 | 0 | 0 | 0 | 0 | 0 | 0 | 0 | 0 | 0 | 2 | | |
| TEAM | | | | | | | | | 1 | 1 | 2 | 0 | 1 | | | | | |
| Totals | | | 14 | 30 | 5 | 11 | 9 | 12 | 6 | 12 | 18 | 4 | 42 | 7 | 7 | 3 | 3 | 100 |
| FG % | 1st Qtr | 9-17 | 52.9% | 2nd Qtr | 5-13 | 38.5% | Half: | 14-30 | 46.7% | | | | | | | | | |
| 3FG % | 1st Qtr | 3-5 | 60.0% | 2nd Qtr | 2-6 | 33.3% | Half: | 5-11 | 45.5% | | | | | | | | | |
| FT % | 1st Qtr | 3-3 | 100.0% | 2nd Qtr | 6-9 | 66.7% | Half: | 9-12 | 75.0% | | | | | | | | | |

Georgia Southern, 28, 7-16, 4-10

| ## | Player | S | Total | | | Rebounds | | | PF | TP | A | TO | Blk | Stl | Min | | | |
|--------|---------------------|------|-------|---------|------|----------|-------|-------|-------|----|----|----|-----|-----|-----|-----|-----|-----|
| | | | FG | FGA | 3PT | FGA | FT | FTA | | | | | | | | Off | Def | Tot |
| 02 | ENGLISH-LURRY,TRELL | g | 1 | 4 | 0 | 2 | 1 | 1 | 0 | 0 | 0 | 1 | 3 | 1 | 1 | 0 | 0 | 12 |
| 11 | MCGOWAN,ANGEL | g | 2 | 11 | 2 | 3 | 1 | 2 | 3 | 1 | 7 | 0 | 2 | 0 | 0 | 0 | 20 | |
| 23 | SAMS,ALEXIS | g | 1 | 3 | 1 | 2 | 1 | 2 | 0 | 2 | 2 | 0 | 4 | 2 | 1 | 0 | 1 | 18 |
| 25 | BUTLER,SIERRA | f | 0 | 2 | 0 | 1 | 0 | 0 | 1 | 2 | 3 | 2 | 0 | 0 | 1 | 0 | 0 | 12 |
| 35 | BUTLER,PATRICE | c | 3 | 4 | 2 | 3 | 0 | 0 | 1 | 2 | 3 | 2 | 8 | 0 | 2 | 0 | 0 | 10 |
| 03 | BURKE,ASHLEY | | 0 | 0 | 0 | 0 | 0 | 0 | 0 | 0 | 0 | 0 | 0 | 0 | 0 | 0 | 0 | |
| 05 | FOULKS,ALEXIS | | 0 | 0 | 0 | 0 | 0 | 0 | 0 | 1 | 1 | 2 | 0 | 0 | 1 | 0 | 0 | 5 |
| 14 | JONES,BRIANA | | 0 | 2 | 0 | 0 | 0 | 0 | 0 | 1 | 1 | 0 | 0 | 2 | 0 | 0 | 0 | 6 |
| 20 | KIRKLAND,SIERRA | | 1 | 1 | 0 | 0 | 0 | 0 | 0 | 0 | 0 | 1 | 2 | 2 | 1 | 0 | 1 | 8 |
| 24 | BEAMON,RHEIN | | 2 | 2 | 0 | 0 | 0 | 0 | 0 | 0 | 0 | 0 | 4 | 0 | 0 | 0 | 0 | 9 |
| 44 | MARCUS,JESSICA | | 0 | 0 | 0 | 0 | 0 | 0 | 0 | 0 | 0 | 0 | 0 | 0 | 0 | 0 | 0 | |
| TEAM | | | | | | | | | 1 | 3 | 4 | 0 | 2 | | | | | |
| Totals | | | 10 | 29 | 5 | 11 | 3 | 5 | 6 | 12 | 18 | 9 | 28 | 7 | 11 | 0 | 2 | 100 |
| FG % | 1st Qtr | 5-14 | 35.7% | 2nd Qtr | 5-15 | 33.3% | Half: | 10-29 | 34.5% | | | | | | | | | |
| 3FG % | 1st Qtr | 1-5 | 20.0% | 2nd Qtr | 4-6 | 66.7% | Half: | 5-11 | 45.5% | | | | | | | | | |
| FT % | 1st Qtr | 1-2 | 50.0% | 2nd Qtr | 2-3 | 66.7% | Half: | 3-5 | 60.0% | | | | | | | | | |

Officials: Mark McClenney, Kerry Pierre, An-Jamilah Gregory
 Technical Fouls: Arkansas State- None, Georgia Southern- None.

| Score by periods | 1st | 2nd | 3rd | 4th | Total |
|------------------|-----|-----|-----|-----|-------|
| Arkansas State | 24 | 18 | 16 | 21 | 79 |
| Georgia Southern | 12 | 16 | 10 | 14 | 52 |

| Points | In Paint | Off T/O | 2nd Chance | Fast Break | Bench |
|--------|----------|---------|------------|------------|-------|
| ASU | 12 | 15 | 10 | 0 | 2 |
| | 10 | 10 | 3 | 0 | 6 |

Last FG - ASU 2nd-00:02, GASOW 2nd-06:55.
 ASU led for 14:55. GASOW led for 1:54. Game was tied for 3:11.

Score tied - 3 times
 Lead changed - 3 times

Arkansas State vs Georgia Southern
2/18/2016; 5:00 PM at Statesboro, GA (Hanner Fieldhouse)
Period 1 Play-By-Play

| VISITORS: Arkansas State | Time | Score | Margin | HOME: Georgia Southern |
|--|-------|-------|--------|-------------------------------------|
| MISSED JUMPER by BRADSHAW,LAUREN | 09:47 | | | |
| | 09:47 | | | REBOUND (DEF) by BUTLER,SIERRA |
| | 09:29 | | | TURNOVER by BUTLER,SIERRA |
| STEAL by BROWN-HAYWOOD,KHADI | 09:28 | | | |
| MISSED 3PTR by GAMBLE,AUNDREA | 09:23 | | | |
| | 09:23 | | | REBOUND (DEF) by TEAM |
| | 09:00 | | | MISSED 3PTR by ENGLISH-LURRY,TRELL |
| REBOUND (DEF) by FLANERY,JESSICA | 09:00 | | | |
| MISSED JUMPER by GILL,BRITTNEY | 08:50 | | | |
| | 08:50 | | | REBOUND (DEF) by TEAM |
| | 08:24 | | | MISSED JUMPER by MCGOWAN,ANGEL |
| REBOUND (DEF) by GAMBLE,AUNDREA | 08:24 | | | |
| TURNOVER by GAMBLE,AUNDREA | 08:14 | | | |
| | 07:58 | | | MISSED 3PTR by ENGLISH-LURRY,TRELL |
| | 07:58 | | | REBOUND (OFF) by BUTLER,PATRICE |
| | 07:55 | 2-0 | H 2 | GOOD! LAYUP by BUTLER,PATRICE [PNT] |
| MISSED JUMPER by BROWN-HAYWOOD,KHADI | 07:43 | | | |
| | 07:43 | | | REBOUND (DEF) by MCGOWAN,ANGEL |
| | 07:11 | | | MISSED JUMPER by BUTLER,SIERRA |
| BLOCK by GILL,BRITTNEY | 07:11 | | | |
| | 07:09 | | | REBOUND (OFF) by BUTLER,SIERRA |
| | 07:09 | | | TURNOVER by TEAM |
| MISSED 3PTR by FLANERY,JESSICA | 06:52 | | | |
| REBOUND (OFF) by BROWN-HAYWOOD,KHADI | 06:52 | | | |
| GOOD! LAYUP by BROWN-HAYWOOD,KHADI [PNT] | 06:48 | 2-2 | T | |
| | 06:29 | | | TURNOVER by BUTLER,PATRICE |
| STEAL by BRADSHAW,LAUREN | 06:28 | | | |
| GOOD! JUMPER by GILL,BRITTNEY | 06:13 | 2-4 | V 2 | |
| | 05:51 | | | TURNOVER by MCGOWAN,ANGEL |
| | 05:51 | | | SUB IN: BEAMON,RHEIN |
| | 05:51 | | | SUB OUT: ENGLISH-LURRY,TRELL |
| GOOD! JUMPER by BRADSHAW,LAUREN [PNT] | 05:38 | 2-6 | V 4 | |
| | 05:14 | 4-6 | V 2 | GOOD! JUMPER by BEAMON,RHEIN [PNT] |
| MISSED JUMPER by BRADSHAW,LAUREN | 04:56 | | | |
| REBOUND (OFF) by BRADSHAW,LAUREN | 04:56 | | | |
| GOOD! JUMPER by BRADSHAW,LAUREN | 04:52 | 4-8 | V 4 | |
| | 04:30 | | | MISSED 3PTR by BUTLER,PATRICE |
| REBOUND (DEF) by BROWN-HAYWOOD,KHADI | 04:30 | | | |
| GOOD! JUMPER by GILL,BRITTNEY [PNT] | 04:20 | 4-10 | V 6 | |
| ASSIST by BROWN-HAYWOOD,KHADI | 04:19 | | | |
| | 03:51 | 7-10 | V 3 | GOOD! 3PTR by BUTLER,PATRICE |
| | 03:51 | | | ASSIST by SAMS,ALEXIS |
| TIMEOUT MEDIA | 03:38 | | | |
| SUB IN: FOWLER,BRITTANY | 03:38 | | | |
| SUB IN: WARREN,AALIYAH | 03:38 | | | |
| SUB IN: OLIVER,DOMINIQUE | 03:38 | | | |
| SUB OUT: BRADSHAW,LAUREN | 03:38 | | | |
| SUB OUT: GILL,BRITTNEY | 03:38 | | | |
| SUB OUT: FLANERY,JESSICA | 03:38 | | | |
| | 03:38 | | | SUB IN: JONES,BRIANA |
| | 03:38 | | | SUB IN: FOULKS,ALEXIS |
| | 03:38 | | | SUB OUT: BUTLER,SIERRA |
| | 03:38 | | | SUB OUT: BUTLER,PATRICE |

| VISITORS: Arkansas State | Time | Score | Margin | HOME: Georgia Southern |
|--------------------------------------|-------|-------|--------|--------------------------------------|
| TURNOVER by TEAM | 03:26 | | | |
| | 03:11 | 9-10 | V 1 | GOOD! LAYUP by BEAMON,RHEIN [PNT] |
| | 03:11 | | | ASSIST by JONES,BRIANA |
| GOOD! 3PTR by BROWN-HAYWOOD,KHADI | 02:55 | 9-13 | V 4 | |
| ASSIST by FOWLER,BRITTANY | 02:55 | | | |
| | 02:31 | | | MISSED JUMPER by SAMS,ALEXIS |
| REBOUND (DEF) by WARREN,AALIYAH | 02:31 | | | |
| MISSED JUMPER by BROWN-HAYWOOD,KHADI | 02:12 | | | |
| REBOUND (OFF) by WARREN,AALIYAH | 02:12 | | | |
| GOOD! JUMPER by WARREN,AALIYAH [PNT] | 02:07 | 9-15 | V 6 | |
| | 01:47 | | | TURNOVER by MCGOWAN,ANGEL |
| | 01:47 | | | SUB IN: ENGLISH-LURRY,TRELL |
| | 01:47 | | | SUB OUT: SAMS,ALEXIS |
| MISSED JUMPER by WARREN,AALIYAH | 01:30 | | | |
| | 01:30 | | | REBOUND (DEF) by JONES,BRIANA |
| | 01:20 | | | MISSED JUMPER by JONES,BRIANA |
| REBOUND (DEF) by GAMBLE,AUNDREA | 01:20 | | | |
| | 01:04 | | | FOUL by FOULKS,ALEXIS |
| GOOD! FT by BROWN-HAYWOOD,KHADI | 01:04 | 9-16 | V 7 | |
| GOOD! FT by BROWN-HAYWOOD,KHADI | 01:04 | 9-17 | V 8 | |
| GOOD! FT by BROWN-HAYWOOD,KHADI | 01:04 | 9-18 | V 9 | |
| SUB IN: BRADSHAW,LAUREN | 01:04 | | | |
| SUB OUT: WARREN,AALIYAH | 01:04 | | | |
| | 01:04 | | | SUB IN: KIRKLAND,SIERRA |
| | 01:04 | | | SUB OUT: FOULKS,ALEXIS |
| | 00:53 | 11-18 | V 7 | GOOD! LAYUP by KIRKLAND,SIERRA [PNT] |
| | 00:53 | | | ASSIST by JONES,BRIANA |
| GOOD! 3PTR by BROWN-HAYWOOD,KHADI | 00:40 | 11-21 | V 10 | |
| ASSIST by GAMBLE,AUNDREA | 00:40 | | | |
| | 00:26 | | | MISSED JUMPER by ENGLISH-LURRY,TRELL |
| | 00:26 | | | REBOUND (OFF) by MCGOWAN,ANGEL |
| FOUL by BROWN-HAYWOOD,KHADI | 00:23 | | | |
| | 00:23 | | | MISSED FT by MCGOWAN,ANGEL |
| | 00:23 | | | REBOUND (DEADB) by TEAM |
| | 00:23 | 12-21 | V 9 | GOOD! FT by MCGOWAN,ANGEL |
| SUB IN: FLANERY,JESSICA | 00:23 | | | |
| SUB OUT: OLIVER,DOMINIQUE | 00:23 | | | |
| GOOD! 3PTR by BROWN-HAYWOOD,KHADI | 00:05 | 12-24 | V 12 | |
| ASSIST by FLANERY,JESSICA | 00:05 | | | |
| | 00:00 | | | MISSED 3PTR by MCGOWAN,ANGEL |
| | 00:00 | | | REBOUND (DEADB) by TEAM |

Arkansas State 24, Georgia Southern 12

| Period 1-only | In Paint | Off T/O | 2nd Chance | Fast Break | Bench | **** |
|---------------|-------------|------------|---------------|---------------|-------|------------------------|
| ASU | 8 | 6 | 6 | 0 | 2 | Score tied - 2 times |
| GASOW | 8 | 4 | 3 | 0 | 6 | Lead changed - 2 times |

Arkansas State vs Georgia Southern
2/18/2016; 5:00 PM at Statesboro, GA (Hanner Fieldhouse)
Period 2 Play-By-Play

| VISITORS: Arkansas State | Time | Score | Margin | HOME: Georgia Southern |
|--------------------------------------|-------|-------|--------|--|
| | 10:00 | | | SUB IN: KIRKLAND,SIERRA |
| | 10:00 | | | SUB OUT: BUTLER,SIERRA |
| | 09:43 | | | TURNOVER by BUTLER,PATRICE |
| | 09:43 | | | FOUL by BUTLER,PATRICE |
| TURNOVER by BROWN-HAYWOOD,KHADI | 09:31 | | | |
| | 09:14 | 15-24 | V 9 | GOOD! 3PTR by MCGOWAN,ANGEL |
| | 09:14 | | | ASSIST by KIRKLAND,SIERRA |
| MISSED 3PTR by FLANERY,JESSICA | 08:57 | | | |
| | 08:57 | | | REBOUND (DEF) by BUTLER,PATRICE |
| | 08:46 | 18-24 | V 6 | GOOD! 3PTR by BUTLER,PATRICE |
| | 08:46 | | | ASSIST by SAMS,ALEXIS |
| TURNOVER by FLANERY,JESSICA | 08:28 | | | |
| | 08:19 | | | TURNOVER by SAMS,ALEXIS |
| MISSED 3PTR by FLANERY,JESSICA | 08:11 | | | |
| REBOUND (OFF) by GILL,BRITTNEY | 08:11 | | | |
| | 08:08 | | | FOUL by KIRKLAND,SIERRA |
| GOOD! FT by GILL,BRITTNEY | 08:08 | 18-25 | V 7 | |
| GOOD! FT by GILL,BRITTNEY | 08:08 | 18-26 | V 8 | |
| | 07:50 | 21-26 | V 5 | GOOD! 3PTR by MCGOWAN,ANGEL |
| | 07:50 | | | ASSIST by ENGLISH-LURRY,TRELL |
| TURNOVER by BRADSHAW,LAUREN | 07:36 | | | |
| | 07:36 | | | STEAL by KIRKLAND,SIERRA |
| | 07:30 | 24-26 | V 2 | GOOD! 3PTR by SAMS,ALEXIS |
| | 07:30 | | | ASSIST by KIRKLAND,SIERRA |
| MISSED JUMPER by FLANERY,JESSICA | 07:05 | | | |
| | 07:05 | | | REBOUND (DEF) by BUTLER,PATRICE |
| | 06:55 | 26-26 | T | GOOD! LAYUP by ENGLISH-LURRY,TRELL [PNT] |
| FOUL by GILL,BRITTNEY | 06:55 | | | |
| | 06:55 | 27-26 | H 1 | GOOD! FT by ENGLISH-LURRY,TRELL |
| SUB IN: FOWLER,BRITTANY | 06:55 | | | |
| SUB OUT: FLANERY,JESSICA | 06:55 | | | |
| MISSED LAYUP by GILL,BRITTNEY | 06:30 | | | |
| | 06:30 | | | REBOUND (DEF) by SAMS,ALEXIS |
| | 06:22 | | | MISSED LAYUP by MCGOWAN,ANGEL |
| BLOCK by BRADSHAW,LAUREN | 06:22 | | | |
| | 06:22 | | | REBOUND (OFF) by TEAM |
| | 06:22 | | | SUB IN: BUTLER,SIERRA |
| | 06:22 | | | SUB OUT: KIRKLAND,SIERRA |
| | 06:20 | | | MISSED JUMPER by MCGOWAN,ANGEL |
| | 06:20 | | | REBOUND (OFF) by MCGOWAN,ANGEL |
| | 06:18 | | | MISSED LAYUP by MCGOWAN,ANGEL |
| | 06:18 | | | REBOUND (OFF) by MCGOWAN,ANGEL |
| | 06:15 | | | MISSED LAYUP by MCGOWAN,ANGEL |
| REBOUND (DEF) by BROWN-HAYWOOD,KHADI | 06:15 | | | |
| | 06:08 | | | FOUL by ENGLISH-LURRY,TRELL |
| MISSED FT by BRADSHAW,LAUREN | 06:08 | | | |
| REBOUND (DEADB) by TEAM | 06:08 | | | |
| GOOD! FT by BRADSHAW,LAUREN | 06:08 | 27-27 | T | |
| | 06:08 | | | MISSED JUMPER by MCGOWAN,ANGEL |
| REBOUND (DEF) by GILL,BRITTNEY | 06:08 | | | |
| | 05:52 | | | SUB IN: JONES,BRIANA |
| | 05:52 | | | SUB OUT: BUTLER,PATRICE |
| | 05:45 | | | FOUL by BUTLER,PATRICE |

| VISITORS: Arkansas State | Time | Score | Margin | HOME: Georgia Southern |
|--------------------------------------|-------|-------|--------|--------------------------------|
| | 05:37 | | | FOUL by BUTLER,SIERRA |
| GOOD! FT by BROWN-HAYWOOD,KHADI | 05:37 | 27-28 | V 1 | |
| MISSED FT by BROWN-HAYWOOD,KHADI | 05:37 | | | |
| REBOUND (OFF) by TEAM | 05:37 | | | |
| SUB IN: OBINABO,OGO | 05:37 | | | |
| SUB OUT: BRADSHAW,LAUREN | 05:37 | | | |
| | 05:37 | | | SUB IN: BEAMON,RHEIN |
| | 05:37 | | | SUB OUT: ENGLISH-LURRY,TRELL |
| GOOD! JUMPER by GILL,BRITTNEY [PNT] | 05:34 | 27-30 | V 3 | |
| | 05:10 | | | MISSED LAYUP by MCGOWAN,ANGEL |
| BLOCK by GILL,BRITTNEY | 05:10 | | | |
| REBOUND (DEF) by BROWN-HAYWOOD,KHADI | 05:09 | | | |
| MISSED JUMPER by GILL,BRITTNEY | 04:45 | | | |
| | 04:45 | | | REBOUND (DEF) by TEAM |
| | 04:42 | | | TIMEOUT MEDIA |
| | 04:20 | | | MISSED JUMPER by JONES,BRIANA |
| REBOUND (DEF) by GILL,BRITTNEY | 04:20 | | | |
| GOOD! LAYUP by GAMBLE,AUNDREA [PNT] | 03:51 | 27-32 | V 5 | |
| | 03:51 | | | FOUL by MCGOWAN,ANGEL |
| MISSED FT by GAMBLE,AUNDREA | 03:51 | | | |
| | 03:51 | | | REBOUND (DEF) by BUTLER,SIERRA |
| SUB IN: FLANERY,JESSICA | 03:51 | | | |
| SUB IN: BRADSHAW,LAUREN | 03:51 | | | |
| SUB IN: OLIVER,DOMINIQUE | 03:51 | | | |
| SUB OUT: OBINABO,OGO | 03:51 | | | |
| SUB OUT: GILL,BRITTNEY | 03:51 | | | |
| SUB OUT: FOWLER,BRITTANY | 03:51 | | | |
| | 03:51 | | | SUB IN: KIRKLAND,SIERRA |
| | 03:51 | | | SUB OUT: JONES,BRIANA |
| FOUL by OLIVER,DOMINIQUE | 03:38 | | | |
| | 03:38 | | | MISSED FT by SAMS,ALEXIS |
| | 03:38 | | | REBOUND (DEADB) by TEAM |
| | 03:38 | 28-32 | V 4 | GOOD! FT by SAMS,ALEXIS |
| MISSED LAYUP by OLIVER,DOMINIQUE | 03:27 | | | |
| REBOUND (OFF) by BRADSHAW,LAUREN | 03:27 | | | |
| TURNOVER by BRADSHAW,LAUREN | 03:23 | | | |
| | 03:22 | | | STEAL by SAMS,ALEXIS |
| | 03:20 | | | MISSED LAYUP by MCGOWAN,ANGEL |
| REBOUND (DEF) by BROWN-HAYWOOD,KHADI | 03:20 | | | |
| GOOD! 3PTR by FLANERY,JESSICA | 03:13 | 28-35 | V 7 | |
| ASSIST by OLIVER,DOMINIQUE | 03:13 | | | |
| | 03:00 | | | TIMEOUT 30SEC |
| | 02:39 | | | MISSED 3PTR by SAMS,ALEXIS |
| REBOUND (DEF) by BROWN-HAYWOOD,KHADI | 02:39 | | | |
| TURNOVER by BRADSHAW,LAUREN | 02:28 | | | |
| FOUL by BRADSHAW,LAUREN | 02:28 | | | |
| | 02:28 | | | SUB IN: FOULKS,ALEXIS |
| | 02:28 | | | SUB OUT: BEAMON,RHEIN |
| | 01:56 | | | TURNOVER by TEAM |
| MISSED 3PTR by FLANERY,JESSICA | 01:43 | | | |
| | 01:43 | | | REBOUND (DEF) by FOULKS,ALEXIS |
| | 01:22 | | | TURNOVER by FOULKS,ALEXIS |
| | 01:22 | | | FOUL by FOULKS,ALEXIS |
| | 01:22 | | | SUB IN: ENGLISH-LURRY,TRELL |
| | 01:22 | | | SUB OUT: FOULKS,ALEXIS |
| GOOD! 3PTR by BROWN-HAYWOOD,KHADI | 01:08 | 28-38 | V 10 | |
| ASSIST by GAMBLE,AUNDREA | 01:08 | | | |
| | 00:44 | | | MISSED 3PTR by BUTLER,SIERRA |

| VISITORS: Arkansas State | Time | Score | Margin | HOME: Georgia Southern |
|------------------------------------|-------|-------|--------|---------------------------------|
| REBOUND (DEF) by TEAM | 00:44 | | | |
| TIMEOUT 30SEC | 00:42 | | | |
| MISSED 3PTR by BROWN-HAYWOOD,KHADI | 00:33 | | | |
| | 00:33 | | | REBOUND (DEF) by SAMS,ALEXIS |
| | 00:12 | | | TURNOVER by KIRKLAND,SIERRA |
| STEAL by OLIVER,DOMINIQUE | 00:11 | | | |
| | 00:02 | | | FOUL by BUTLER,SIERRA |
| GOOD! FT by BRADSHAW,LAUREN | 00:02 | 28-39 | V 11 | |
| GOOD! FT by BRADSHAW,LAUREN | 00:02 | 28-40 | V 12 | |
| | 00:02 | | | TURNOVER by ENGLISH-LURRY,TRELL |
| GOOD! JUMPER by FLANERY,JESSICA | 00:02 | 28-42 | V 14 | |
| ASSIST by GAMBLE,AUNDREA | 00:02 | | | |
| SUB IN: GILL,BRITTNEY | 00:02 | | | |
| SUB OUT: OLIVER,DOMINIQUE | 00:02 | | | |
| | 00:02 | | | SUB IN: JONES,BRIANA |
| | 00:02 | | | SUB IN: BEAMON,RHEIN |
| | 00:02 | | | SUB OUT: ENGLISH-LURRY,TRELL |
| | 00:02 | | | SUB OUT: BUTLER,SIERRA |

Arkansas State 42, Georgia Southern 28

| Period 2-only | In Paint | Off T/O | 2nd Chance | Fast Break | Bench | **** |
|---------------|-------------|------------|---------------|---------------|-------|------------------------|
| ASU | 4 | 9 | 4 | 0 | 0 | Score tied - 2 times |
| GASOW | 2 | 6 | 0 | 0 | 0 | Lead changed - 2 times |

Official Basketball Box Score -- Game Totals -- Second Half Statistics
Arkansas State vs Georgia Southern
2/18/2016 5:00 PM at Statesboro, GA (Hanner Fieldhouse)

Arkansas State, 37, 20-3, 14-0

| ## | Player | S | Total | | | Rebounds | | | PF | TP | A | TO | Blk | Stl | Min |
|--------|--------------------|---|--------|------|--------|----------|---------|---------|----|----|---|----|-----|-----|-----|
| | | | FG-FGA | 3PT | FG-FGA | FT-FTA | Off Reb | Def Reb | | | | | | | |
| 01 | BRADSHAW,LAUREN | f | 0-2 | 0-0 | 0-0 | 0 | 1 | 1 | 1 | 0 | 0 | 0 | 0 | 0 | 9 |
| 03 | BROWN-HAYWOOD,KHAI | f | 4-7 | 0-2 | 4-5 | 1 | 3 | 4 | 2 | 12 | 1 | 0 | 0 | 1 | 15 |
| 05 | GILL,BRITNEY | g | 1-3 | 0-0 | 0-0 | 0 | 5 | 5 | 1 | 2 | 1 | 0 | 0 | 12 | |
| 21 | FLANERY,JESSICA | g | 1-4 | 1-3 | 0-0 | 0 | 0 | 0 | 0 | 3 | 0 | 1 | 0 | 10 | |
| 24 | GAMBLE,AUNDREA | g | 3-4 | 0-1 | 0-0 | 3 | 1 | 4 | 0 | 6 | 2 | 2 | 0 | 15 | |
| 00 | WARREN,AALIYAH | | 0-0 | 0-0 | 0-0 | 1 | 0 | 1 | 0 | 0 | 0 | 0 | 1 | 3 | |
| 10 | WESTBROOK,AKASHA | | 1-1 | 0-0 | 0-0 | 0 | 0 | 0 | 0 | 2 | 0 | 0 | 0 | 5 | |
| 12 | RUFFINS,JAMIE | | 0-0 | 0-0 | 0-0 | 0 | 1 | 1 | 0 | 0 | 0 | 0 | 0 | 4 | |
| 13 | FOWLER,BRITTANY | | 0-2 | 0-2 | 0-0 | 0 | 0 | 0 | 0 | 0 | 1 | 0 | 0 | 5 | |
| 14 | HOLLOWAY,CHRISTYAL | | 1-2 | 0-1 | 0-0 | 0 | 0 | 0 | 0 | 2 | 1 | 1 | 0 | 5 | |
| 20 | LADD,KYLIE | | 2-2 | 2-2 | 2-2 | 0 | 0 | 0 | 0 | 8 | 0 | 0 | 0 | 5 | |
| 25 | OLIVER,DOMINIQUE | | 1-1 | 0-0 | 0-0 | 0 | 2 | 2 | 1 | 2 | 0 | 0 | 1 | 7 | |
| 33 | OBINABO,OGO | | 0-0 | 0-0 | 0-0 | 0 | 0 | 0 | 2 | 0 | 1 | 1 | 1 | 5 | |
| TEAM | | | | | | 0 | 0 | 0 | 0 | | 0 | | | | |
| Totals | | | 14-28 | 3-11 | 6-7 | 5 | 13 | 18 | 7 | 37 | 7 | 5 | 1 | 4 | 100 |

| | | | | | | | | | |
|-------|---------|------|-------|---------|------|--------|-------|-------|-------|
| FG % | 3rd Qtr | 7-13 | 53.8% | 4th Qtr | 7-15 | 46.7% | Half: | 14-28 | 50.0% |
| 3FG % | 3rd Qtr | 1-4 | 25.0% | 4th Qtr | 2-7 | 28.6% | Half: | 3-11 | 45.5% |
| FT % | 3rd Qtr | 1-2 | 50.0% | 4th Qtr | 5-5 | 100.0% | Half: | 6-7 | 85.7% |

Georgia Southern, 24, 7-16, 4-10

| ## | Player | S | Total | | | Rebounds | | | PF | TP | A | TO | Blk | Stl | Min |
|--------|---------------------|---|--------|------|--------|----------|---------|---------|----|----|---|----|-----|-----|-----|
| | | | FG-FGA | 3PT | FG-FGA | FT-FTA | Off Reb | Def Reb | | | | | | | |
| 02 | ENGLISH-LURRY,TRELL | g | 0-0 | 0-0 | 0-0 | 0 | 0 | 0 | 0 | 0 | 0 | 0 | 0 | 0 | |
| 11 | MCGOWAN,ANGEL | g | 3-8 | 2-6 | 2-2 | 0 | 0 | 0 | 0 | 10 | 0 | 0 | 0 | 15 | |
| 23 | SAMS,ALEXIS | g | 1-5 | 1-3 | 0-2 | 1 | 0 | 1 | 0 | 3 | 1 | 2 | 0 | 17 | |
| 25 | BUTLER,SIERRA | f | 0-1 | 0-0 | 0-0 | 0 | 1 | 1 | 1 | 0 | 0 | 1 | 1 | 7 | |
| 35 | BUTLER,PATRICE | c | 2-5 | 0-0 | 1-2 | 1 | 1 | 2 | 1 | 5 | 0 | 0 | 0 | 13 | |
| 03 | BURKE,ASHLEY | | 0-2 | 0-1 | 0-0 | 0 | 0 | 0 | 1 | 0 | 2 | 1 | 0 | 9 | |
| 05 | FOULKS,ALEXIS | | 1-2 | 0-1 | 0-0 | 0 | 1 | 1 | 1 | 2 | 0 | 1 | 0 | 10 | |
| 14 | JONES,BRIANA | | 0-1 | 0-0 | 0-0 | 1 | 0 | 1 | 0 | 0 | 0 | 0 | 0 | 7 | |
| 20 | KIRKLAND,SIERRA | | 1-3 | 0-1 | 0-0 | 1 | 4 | 5 | 1 | 2 | 1 | 2 | 0 | 14 | |
| 24 | BEAMON,RHEIN | | 0-0 | 0-0 | 0-0 | 0 | 0 | 0 | 0 | 0 | 0 | 0 | 0 | 5 | |
| 44 | MARCUS,JESSICA | | 1-2 | 0-0 | 0-0 | 1 | 0 | 1 | 0 | 2 | 0 | 0 | 0 | 3 | |
| TEAM | | | | | | 3 | 3 | 6 | 0 | | 1 | | | | |
| Totals | | | 9-29 | 3-12 | 3-6 | 8 | 10 | 18 | 5 | 24 | 4 | 8 | 1 | 5 | 100 |

| | | | | | | | | | |
|-------|---------|------|-------|---------|------|-------|-------|------|-------|
| FG % | 3rd Qtr | 4-18 | 22.2% | 4th Qtr | 5-11 | 45.5% | Half: | 9-29 | 31.0% |
| 3FG % | 3rd Qtr | 2-7 | 28.6% | 4th Qtr | 1-5 | 20.0% | Half: | 3-12 | 45.5% |
| FT % | 3rd Qtr | 0-0 | 0% | 4th Qtr | 3-6 | 50.0% | Half: | 3-6 | 50.0% |

Officials: Mark McClenney, Kerry Pierre, An-Jamilah Gregory
 Technical Fouls: Arkansas State- None, Georgia Southern- None.

| Score by periods | 1st | 2nd | 3rd | 4th | Total |
|------------------|-----|-----|-----|-----|-------|
| Arkansas State | 24 | 18 | 16 | 21 | 79 |
| Georgia Southern | 12 | 16 | 10 | 14 | 52 |

| Points | In Paint | Off T/O | 2nd 2nd Chance | Fast Fast Break | Bench |
|--------|----------|---------|----------------|-----------------|-------|
| ASU | 16 | 10 | 3 | 4 | 14 |
| | 12 | 7 | 5 | 4 | 6 |

Last FG - ASU 4th-01:01, GASOW 4th-00:26.
 ASU led for 20:00. GASOW led for 0:00. Game was tied for 0:00.

Score tied - 0 times
 Lead changed - 0 times

Arkansas State vs Georgia Southern
2/18/2016; 5:00 PM at Statesboro, GA (Hanner Fieldhouse)
Period 3 Play-By-Play

| VISITORS: Arkansas State | Time | Score | Margin | HOME: Georgia Southern |
|--|-------|-------|--------|--------------------------------------|
| | 10:00 | | | SUB IN: KIRKLAND,SIERRA |
| | 10:00 | | | SUB OUT: ENGLISH-LURRY,TRELL |
| | 09:45 | | | MISSED JUMPER by BUTLER,PATRICE |
| REBOUND (DEF) by GILL,BRITTNEY | 09:45 | | | |
| MISSED JUMPER by BRADSHAW,LAUREN | 09:30 | | | |
| | 09:30 | | | REBOUND (DEF) by TEAM |
| | 09:05 | | | TURNOVER by SAMS,ALEXIS |
| MISSED JUMPER by GILL,BRITTNEY | 08:45 | | | |
| REBOUND (OFF) by GAMBLE,AUNDREA | 08:44 | | | |
| TURNOVER by GAMBLE,AUNDREA | 08:43 | | | |
| | 08:42 | | | STEAL by KIRKLAND,SIERRA |
| | 08:34 | 31-42 | V 11 | GOOD! 3PTR by SAMS,ALEXIS |
| | 08:34 | | | ASSIST by KIRKLAND,SIERRA |
| MISSED JUMPER by BRADSHAW,LAUREN | 08:17 | | | |
| | 08:17 | | | REBOUND (DEF) by BUTLER,PATRICE |
| | 08:01 | | | MISSED 3PTR by MCGOWAN,ANGEL |
| REBOUND (DEF) by GILL,BRITTNEY | 08:01 | | | |
| GOOD! JUMPER by GAMBLE,AUNDREA | 07:40 | 31-44 | V 13 | |
| | 07:27 | 34-44 | V 10 | GOOD! 3PTR by MCGOWAN,ANGEL |
| GOOD! LAYUP by GAMBLE,AUNDREA [PNT] | 07:16 | 34-46 | V 12 | |
| | 06:56 | | | MISSED JUMPER by BUTLER,PATRICE |
| REBOUND (DEF) by BRADSHAW,LAUREN | 06:56 | | | |
| GOOD! 3PTR by FLANERY,JESSICA | 06:44 | 34-49 | V 15 | |
| ASSIST by GAMBLE,AUNDREA | 06:44 | | | |
| | 06:18 | | | MISSED LAYUP by BUTLER,SIERRA |
| REBOUND (DEF) by GILL,BRITTNEY | 06:18 | | | |
| TURNOVER by GAMBLE,AUNDREA | 06:10 | | | |
| | 06:08 | | | STEAL by BUTLER,PATRICE |
| | 06:03 | | | MISSED 3PTR by SAMS,ALEXIS |
| REBOUND (DEF) by GILL,BRITTNEY | 06:03 | | | |
| GOOD! LAYUP by BROWN-HAYWOOD,KHADI [PNT] | 05:53 | 34-51 | V 17 | |
| ASSIST by GAMBLE,AUNDREA | 05:53 | | | |
| | 05:42 | | | TIMEOUT 30SEC |
| SUB IN: OLIVER,DOMINIQUE | 05:42 | | | |
| SUB OUT: BRADSHAW,LAUREN | 05:42 | | | |
| | 05:42 | | | SUB IN: BURKE,ASHLEY |
| | 05:42 | | | SUB OUT: BUTLER,SIERRA |
| | 05:35 | | | MISSED 3PTR by MCGOWAN,ANGEL |
| REBOUND (DEF) by GILL,BRITTNEY | 05:35 | | | |
| GOOD! LAYUP by GILL,BRITTNEY [PNT] | 05:07 | 34-53 | V 19 | |
| | 04:52 | | | MISSED 3PTR by KIRKLAND,SIERRA |
| REBOUND (DEF) by BROWN-HAYWOOD,KHADI | 04:52 | | | |
| | 04:32 | | | FOUL by KIRKLAND,SIERRA |
| TIMEOUT MEDIA | 04:32 | | | |
| TURNOVER by FLANERY,JESSICA | 04:09 | | | |
| | 04:09 | | | STEAL by SAMS,ALEXIS |
| | 03:53 | | | MISSED LAYUP by SAMS,ALEXIS |
| | 03:53 | | | REBOUND (OFF) by BUTLER,PATRICE |
| | 03:49 | | | MISSED LAYUP by BUTLER,PATRICE |
| | 03:49 | | | REBOUND (OFF) by SAMS,ALEXIS |
| | 03:45 | | | MISSED JUMPER by SAMS,ALEXIS |
| | 03:45 | | | REBOUND (OFF) by TEAM |
| | 03:31 | 36-53 | V 17 | GOOD! JUMPER by BUTLER,PATRICE [PNT] |

| VISITORS: Arkansas State | Time | Score | Margin | HOME: Georgia Southern |
|---------------------------------------|-------|-------|--------|--------------------------------------|
| | 03:31 | | | ASSIST by BURKE,ASHLEY |
| GOOD! JUMPER by GAMBLE,AUNDREA | 03:19 | 36-55 | V 19 | |
| FOUL by BROWN-HAYWOOD,KHADI | 03:00 | | | |
| SUB IN: BRADSHAW,LAUREN | 03:00 | | | |
| SUB IN: FOWLER,BRITTANY | 03:00 | | | |
| SUB OUT: GILL,BRITTNEY | 03:00 | | | |
| SUB OUT: FLANERY,JESSICA | 03:00 | | | |
| | 02:46 | 38-55 | V 17 | GOOD! LAYUP by KIRKLAND,SIERRA [PNT] |
| | 02:46 | | | ASSIST by BURKE,ASHLEY |
| MISSED 3PTR by BROWN-HAYWOOD,KHADI | 02:31 | | | |
| | 02:31 | | | REBOUND (DEF) by TEAM |
| | 02:12 | | | MISSED JUMPER by MCGOWAN,ANGEL |
| REBOUND (DEF) by OLIVER,DOMINIQUE | 02:12 | | | |
| | 02:04 | | | FOUL by BUTLER,PATRICE |
| GOOD! FT by BROWN-HAYWOOD,KHADI | 02:04 | 38-56 | V 18 | |
| MISSED FT by BROWN-HAYWOOD,KHADI | 02:04 | | | |
| | 02:04 | | | REBOUND (DEF) by KIRKLAND,SIERRA |
| | 02:04 | | | SUB IN: JONES,BRIANA |
| | 02:04 | | | SUB IN: BEAMON,RHEIN |
| | 02:04 | | | SUB OUT: MCGOWAN,ANGEL |
| | 02:04 | | | SUB OUT: BUTLER,PATRICE |
| | 01:56 | | | MISSED 3PTR by SAMS,ALEXIS |
| REBOUND (DEF) by GAMBLE,AUNDREA | 01:56 | | | |
| | 01:52 | | | FOUL by BURKE,ASHLEY |
| MISSED 3PTR by FOWLER,BRITTANY | 01:32 | | | |
| REBOUND (OFF) by GAMBLE,AUNDREA | 01:32 | | | |
| MISSED 3PTR by FOWLER,BRITTANY | 01:18 | | | |
| | 01:18 | | | REBOUND (DEF) by KIRKLAND,SIERRA |
| | 00:53 | | | TURNOVER by SAMS,ALEXIS |
| STEAL by OLIVER,DOMINIQUE | 00:52 | | | |
| GOOD! LAYUP by OLIVER,DOMINIQUE [PNT] | 00:48 | 38-58 | V 20 | |
| ASSIST by BROWN-HAYWOOD,KHADI | 00:48 | | | |
| | 00:18 | | | MISSED JUMPER by KIRKLAND,SIERRA |
| | 00:18 | | | REBOUND (OFF) by JONES,BRIANA |
| | 00:14 | | | MISSED JUMPER by JONES,BRIANA |
| REBOUND (DEF) by BROWN-HAYWOOD,KHADI | 00:14 | | | |

Arkansas State 79, Georgia Southern 52

| Period 3-only | In Paint | Off T/O | 2nd Chance | Fast Break | Bench | **** |
|---------------|-------------|------------|---------------|---------------|-------|------------------------|
| ASU | 8 | 2 | 0 | 0 | 2 | Score tied - 0 times |
| GASOW | 4 | 5 | 2 | 0 | 2 | Lead changed - 0 times |

Arkansas State vs Georgia Southern
2/18/2016; 5:00 PM at Statesboro, GA (Hanner Fieldhouse)
Period 4 Play-By-Play

| VISITORS: Arkansas State | Time | Score | Margin | HOME: Georgia Southern |
|---|-------|-------|--------|---------------------------------------|
| SUB IN: WARREN,AALIYAH | 10:00 | | | |
| SUB OUT: BRADSHAW,LAUREN | 10:00 | | | |
| | 10:00 | | | SUB IN: FOULKS,ALEXIS |
| | 10:00 | | | SUB IN: KIRKLAND,SIERRA |
| | 10:00 | | | SUB IN: JONES,BRIANA |
| | 10:00 | | | SUB OUT: ENGLISH-LURRY,TRELL |
| | 10:00 | | | SUB OUT: BUTLER,SIERRA |
| | 10:00 | | | SUB OUT: BUTLER,PATRICE |
| MISSED 3PTR by FLANERY,JESSICA | 09:52 | | | |
| REBOUND (OFF) by GAMBLE,AUNDREA | 09:52 | | | |
| MISSED JUMPER by GILL,BRITTNEY | 09:30 | | | |
| | 09:30 | | | REBOUND (DEF) by KIRKLAND,SIERRA |
| | 09:19 | | | MISSED 3PTR by FOULKS,ALEXIS |
| | 09:19 | | | REBOUND (OFF) by KIRKLAND,SIERRA |
| | 09:05 | | | TURNOVER by KIRKLAND,SIERRA |
| STEAL by WARREN,AALIYAH | 09:04 | | | |
| MISSED 3PTR by FLANERY,JESSICA | 08:51 | | | |
| REBOUND (OFF) by WARREN,AALIYAH | 08:51 | | | |
| MISSED 3PTR by GAMBLE,AUNDREA | 08:27 | | | |
| | 08:27 | | | REBOUND (DEF) by FOULKS,ALEXIS |
| FOUL by BROWN-HAYWOOD,KHADI | 08:17 | | | |
| | 08:17 | 39-58 | V 19 | GOOD! FT by MCGOWAN,ANGEL |
| | 08:17 | 40-58 | V 18 | GOOD! FT by MCGOWAN,ANGEL |
| | 08:17 | | | SUB IN: BUTLER,SIERRA |
| | 08:17 | | | SUB OUT: KIRKLAND,SIERRA |
| MISSED JUMPER by FLANERY,JESSICA | 08:03 | | | |
| | 08:03 | | | BLOCK by BUTLER,SIERRA |
| | 08:01 | | | REBOUND (DEF) by BUTLER,SIERRA |
| | 07:57 | 42-58 | V 16 | GOOD! LAYUP by MCGOWAN,ANGEL [FB/PNT] |
| GOOD! JUMPER by BROWN-HAYWOOD,KHADI [PNT] | 07:44 | 42-60 | V 18 | |
| ASSIST by GILL,BRITTNEY | 07:44 | | | |
| | 07:23 | | | TURNOVER by BUTLER,SIERRA |
| STEAL by BROWN-HAYWOOD,KHADI | 07:22 | | | |
| GOOD! LAYUP by BROWN-HAYWOOD,KHADI [FB/PNT] | 07:20 | 42-62 | V 20 | |
| FOUL by GILL,BRITTNEY | 06:59 | | | |
| SUB IN: FOWLER,BRITTANY | 06:59 | | | |
| SUB IN: BRADSHAW,LAUREN | 06:59 | | | |
| SUB OUT: WARREN,AALIYAH | 06:59 | | | |
| SUB OUT: FLANERY,JESSICA | 06:59 | | | |
| | 06:46 | | | MISSED 3PTR by MCGOWAN,ANGEL |
| REBOUND (DEF) by BROWN-HAYWOOD,KHADI | 06:46 | | | |
| MISSED 3PTR by BROWN-HAYWOOD,KHADI | 06:37 | | | |
| | 06:37 | | | REBOUND (DEF) by TEAM |
| | 06:08 | 45-62 | V 17 | GOOD! 3PTR by MCGOWAN,ANGEL |
| | 06:08 | | | ASSIST by SAMS,ALEXIS |
| MISSED JUMPER by BROWN-HAYWOOD,KHADI | 05:51 | | | |
| REBOUND (OFF) by BROWN-HAYWOOD,KHADI | 05:51 | | | |
| | 05:27 | | | FOUL by BUTLER,SIERRA |
| GOOD! FT by BROWN-HAYWOOD,KHADI | 05:27 | 45-63 | V 18 | |
| GOOD! FT by BROWN-HAYWOOD,KHADI | 05:27 | 45-64 | V 19 | |
| GOOD! FT by BROWN-HAYWOOD,KHADI | 05:27 | 45-65 | V 20 | |
| | 05:27 | | | SUB IN: BUTLER,PATRICE |
| | 05:27 | | | SUB IN: KIRKLAND,SIERRA |

| VISITORS: Arkansas State | Time | Score | Margin | HOME: Georgia Southern |
|---|-------|-------|--------|----------------------------------|
| | 05:27 | | | SUB OUT: BUTLER,SIERRA |
| | 05:27 | | | SUB OUT: JONES,BRIANA |
| | 05:05 | | | MISSED 3PTR by MCGOWAN,ANGEL |
| | 05:05 | | | REBOUND (OFF) by TEAM |
| | 05:03 | | | TURNOVER by TEAM |
| GOOD! JUMPER by BROWN-HAYWOOD,KHADI [PNT] | 04:51 | 45-67 | V 22 | |
| ASSIST by FOWLER,BRITTANY | 04:51 | | | |
| FOUL by BRADSHAW,LAUREN | 04:32 | | | |
| | 04:32 | | | TIMEOUT MEDIA |
| | 04:32 | | | MISSED FT by SAMS,ALEXIS |
| | 04:32 | | | REBOUND (DEADB) by TEAM |
| | 04:32 | | | MISSED FT by SAMS,ALEXIS |
| REBOUND (DEF) by OLIVER,DOMINIQUE | 04:32 | | | |
| SUB IN: HOLLOWAY,CHRISTYAL | 04:32 | | | |
| SUB IN: LADD,KYLIE | 04:32 | | | |
| SUB IN: WESTBROOK,AKASHA | 04:32 | | | |
| SUB IN: OLIVER,DOMINIQUE | 04:32 | | | |
| SUB IN: OBINABO,OGO | 04:32 | | | |
| SUB OUT: FOWLER,BRITTANY | 04:32 | | | |
| SUB OUT: BROWN-HAYWOOD,KHADI | 04:32 | | | |
| SUB OUT: GILL,BRITTNEY | 04:32 | | | |
| SUB OUT: BRADSHAW,LAUREN | 04:32 | | | |
| SUB OUT: GAMBLE,AUNDREA | 04:32 | | | |
| MISSED 3PTR by HOLLOWAY,CHRISTYAL | 04:25 | | | |
| | 04:25 | | | REBOUND (DEF) by KIRKLAND,SIERRA |
| FOUL by OBINABO,OGO | 04:10 | | | |
| | 04:09 | | | TURNOVER by FOULKS,ALEXIS |
| TURNOVER by HOLLOWAY,CHRISTYAL | 03:46 | | | |
| | 03:46 | | | STEAL by MCGOWAN,ANGEL |
| FOUL by OLIVER,DOMINIQUE | 03:46 | | | |
| | 03:46 | | | TIMEOUT 30SEC |
| SUB IN: RUFFINS,JAMIE | 03:46 | | | |
| SUB OUT: OLIVER,DOMINIQUE | 03:46 | | | |
| | 03:29 | | | TURNOVER by KIRKLAND,SIERRA |
| | 03:29 | | | SUB IN: BURKE,ASHLEY |
| | 03:29 | | | SUB IN: MARCUS,JESSICA |
| | 03:29 | | | SUB OUT: SAMS,ALEXIS |
| | 03:29 | | | SUB OUT: KIRKLAND,SIERRA |
| | 03:02 | | | FOUL by FOULKS,ALEXIS |
| GOOD! FT by LADD,KYLIE | 03:02 | 45-68 | V 23 | |
| GOOD! FT by LADD,KYLIE | 03:02 | 45-69 | V 24 | |
| | 02:48 | | | MISSED JUMPER by BURKE,ASHLEY |
| BLOCK by OBINABO,OGO | 02:48 | | | |
| | 02:47 | | | REBOUND (OFF) by TEAM |
| | 02:47 | | | TIMEOUT 30SEC |
| FOUL by OBINABO,OGO | 02:41 | | | |
| | 02:41 | | | MISSED FT by BUTLER,PATRICE |
| | 02:41 | | | REBOUND (DEADB) by TEAM |
| | 02:41 | 46-69 | V 23 | GOOD! FT by BUTLER,PATRICE |
| | 02:41 | | | SUB IN: BEAMON,RHEIN |
| | 02:41 | | | SUB OUT: MCGOWAN,ANGEL |
| GOOD! 3PTR by LADD,KYLIE | 02:28 | 46-72 | V 26 | |
| ASSIST by OBINABO,OGO | 02:28 | | | |
| | 02:12 | | | MISSED JUMPER by MARCUS,JESSICA |
| REBOUND (DEF) by RUFFINS,JAMIE | 02:12 | | | |
| GOOD! JUMPER by WESTBROOK,AKASHA | 01:49 | 46-74 | V 28 | |
| | 01:33 | | | TURNOVER by BURKE,ASHLEY |
| STEAL by HOLLOWAY,CHRISTYAL | 01:32 | | | |

| VISITORS: Arkansas State | Time | Score | Margin | HOME: Georgia Southern |
|--|-------|-------|--------|---------------------------------------|
| GOOD! LAYUP by HOLLOWAY,CHRISTYAL [FB/PNT] | 01:29 | 46-76 | V 30 | |
| | 01:13 | 48-76 | V 28 | GOOD! LAYUP by BUTLER,PATRICE [PNT] |
| GOOD! 3PTR by LADD,KYLIE | 01:01 | 48-79 | V 31 | |
| ASSIST by HOLLOWAY,CHRISTYAL | 01:01 | | | |
| | 00:45 | | | MISSED 3PTR by BURKE,ASHLEY |
| | 00:45 | | | REBOUND (OFF) by MARCUS,JESSICA |
| | 00:42 | 50-79 | V 29 | GOOD! LAYUP by MARCUS,JESSICA [PNT] |
| TURNOVER by OBINABO,OGO | 00:32 | | | |
| | 00:31 | | | STEAL by FOULKS,ALEXIS |
| | 00:26 | 52-79 | V 27 | GOOD! LAYUP by FOULKS,ALEXIS [FB/PNT] |

Arkansas State 79, Georgia Southern 52

| Period 4-only | In Paint | Off T/O | 2nd Chance | Fast Break | Bench | **** |
|---------------|-------------|------------|---------------|---------------|-------|------------------------|
| ASU | 8 | 8 | 3 | 4 | 12 | Score tied - 0 times |
| GASOW | 8 | 2 | 3 | 4 | 4 | Lead changed - 0 times |

Arkansas State vs Georgia Southern

2/18/2016; 5:00 PM at Statesboro, GA (Hanner Fieldhouse)

Scoring/Runs Reference

| Period 1 | | | Period 2 | | |
|------------------------------|--------------------------|--|----------------------------|---------------------------|---|
| Arkansas State | Score | Georgia Southern | Arkansas State | Score | Georgia Southern |
| 09:47 - BRADSHAW,JUMPER | X | | | | BUTLER TURN - ,09:43 |
| | | TO BUTLER TURN - ,09:29 | 09:31,-,BROWN-HAYWOOD TURN | | TO |
| 09:23 - GAMBLE,3PTR | X | | | 24-15 9 | 3 MCGOWAN,3PTR,- ,09:14 |
| | | X ENGLISH-LURRY,3PTR - 09:00 | 08:57 - FLANERY,3PTR | X | |
| 08:50 - GILL,JUMPER | X | | | 24-18 6 | 3 BUTLER,3PTR,- ,08:46 |
| | | X MCGOWAN,JUMPER - 08:24 | 08:28,-,FLANERY TURN TO | | TO SAMS TURN - ,08:19 |
| 08:14,-,GAMBLE TURN TO | | | 08:11 - FLANERY,3PTR | X | |
| | | X ENGLISH-LURRY,3PTR - 07:58 | 08:08,-,GILL,FT | 1 25-18 7 | |
| | 0-2 2 | 2 ^P BUTLER,LAYUP,- ,07:55 | 08:08,-,GILL,FT | 1 26-18 8 | |
| 07:43 - BROWN-HAYWOOD,JUMPER | X | | | 26-21 5 | 3 MCGOWAN,3PTR,- ,07:50 |
| | | X BUTLER,JUMPER - 07:11 | 07:36,-,BRADSHAW TURN | | TO |
| | | TO TEAM TURN - ,07:09 | | 26-24 2 | 3 SAMS,3PTR,- ,07:30 |
| 06:52 - FLANERY,3PTR | X | | 07:05 - FLANERY,JUMPER | X | |
| 06:48,-,BROWN-HAYWOOD,LAYUP | 2 ^P 2-2 0 | | | 26-26 0 | 2 ^P ENGLISH-LURRY,LAYUP,- ,06:55 |
| | | TO BUTLER TURN - ,06:29 | | 26-27 1 | 1 ENGLISH-LURRY,FT,- ,06:55 |
| 06:13,-,GILL,JUMPER | 2 4-2 2 | | 06:30 - GILL,LAYUP | X | |
| | | TO MCGOWAN TURN - ,05:51 | | | X MCGOWAN,LAYUP - 06:22 |
| 05:38,-,BRADSHAW,JUMPER | 2 ^P 6-2 4 | | | | X MCGOWAN,JUMPER - 06:20 |
| | | 6-4 2 2 ^P BEAMON,JUMPER,- ,05:14 | | | X MCGOWAN,LAYUP - 06:18 |
| 04:56 - BRADSHAW,JUMPER | X | | | | X MCGOWAN,LAYUP - 06:15 |
| 04:52,-,BRADSHAW,JUMPER | 2 8-4 4 | | 06:08 - BRADSHAW,FT | X | |
| | | X BUTLER,3PTR - 04:30 | 06:08,-,BRADSHAW,FT | 1 27-27 0 | |
| 04:20,-,GILL,JUMPER | 2 ^P 10-4 6 | | | | X MCGOWAN,JUMPER - 06:08 |
| | | 10-7 3 3 BUTLER,3PTR,- ,03:51 | 05:37,-,BROWN-HAYWOOD,FT | 1 28-27 1 | |
| 03:26,-,TEAM TURN TO | | | 05:37 - BROWN-HAYWOOD,FT | X | |
| | | 10-9 1 2 ^P BEAMON,LAYUP,- ,03:11 | 05:34,-,GILL,JUMPER | 2 ^P 30-27 3 | |
| 02:55,-,BROWN-HAYWOOD,3PTR | 3 13-9 4 | | | | X MCGOWAN,LAYUP - 05:10 |
| | | X SAMS,JUMPER - 02:31 | 04:45 - GILL,JUMPER | X | |
| 02:12 - BROWN-HAYWOOD,JUMPER | X | | | | X JONES,JUMPER - 04:20 |

| | | | |
|--------------------------------|-----------------------------|----|-------------------------------------|
| 02:07,- WARREN,JUMPER | 2 ^P 15-9 -6 | TO | MCGOWAN TURN - 01:47 |
| 01:30 - WARREN,JUMPER | X | | |
| | | | JONES,JUMPER - 01:20 |
| 01:04,-,BROWN- HAYWOOD,FT | 1 16-9 -7 | | |
| 01:04,-,BROWN- HAYWOOD,FT | 1 17-9 -8 | | |
| 01:04,-,BROWN- HAYWOOD,FT | 1 18-9 -9 | | |
| | | | KIRKLAND,LAYUP,- 00:53 |
| 00:40,-,BROWN- HAYWOOD,3PTR | 3 21-11 -10 | | |
| | | | ENGLISH- LURRY,JUMPER - 00:26 |
| | | | MCGOWAN,FT - 00:23 |
| | | | MCGOWAN,FT,- 00:23 |
| 00:05,-,BROWN- HAYWOOD,3PTR | 3 24-12 -12 | | |
| | | | MCGOWAN,3PTR - 00:00 |
| | | | |
| | Period 3 | | |
| Arkansas State | Score | | Georgia Southern |
| | | | BUTLER,JUMPER - 09:45 |
| 09:30 - BRADSHAW,JUMPER | X | | |
| | | | SAMS TURN -,09:05 |
| 08:45 - GILL,JUMPER | X | | |
| 08:43,-,GAMBLE TURN TO | | | |
| | | | SAMS,3PTR,-,08:34 |
| 08:17 - BRADSHAW,JUMPER | X | | |
| | | | MCGOWAN,3PTR - 08:01 |
| 07:40,- GAMBLE,JUMPER | 2 44-31 -13 | | |
| | | | MCGOWAN,3PTR,- 07:27 |
| 07:16,- GAMBLE,LAYUP | 2 ^P 46-34 -12 | | |
| | | | BUTLER,JUMPER - 06:56 |
| 06:44,- FLANERY,3PTR | 3 49-34 -15 | | |
| | | | BUTLER,LAYUP - 06:18 |

| | | | |
|----------------------------------|----------------------------------|--|-------------------------------|
| 03:51,- GAMBLE,LAYUP | 2 ^P 32-27 -5 | | |
| 03:51 - GAMBLE,FT | X | | |
| | | | SAMS,FT - 03:38 |
| | | | SAMS,FT,-,03:38 |
| 03:27 - OLIVER,LAYUP | X | | |
| 03:23,-,BRADSHAW TURN | | | |
| | | | MCGOWAN,LAYUP - 03:20 |
| 03:13,-,FLANERY,3PTR | 3 35-28 -7 | | |
| | | | SAMS,3PTR - 02:39 |
| 02:28,-,BRADSHAW TURN | | | |
| | | | TEAM TURN -,01:56 |
| 01:43 - FLANERY,3PTR | X | | |
| | | | FOULKS TURN - 01:22 |
| 01:08,-,BROWN- HAYWOOD,3PTR | 3 38-28 -10 | | |
| | | | BUTLER,3PTR - 00:44 |
| 00:33 - BROWN- HAYWOOD,3PTR | X | | |
| | | | KIRKLAND TURN - 00:12 |
| 00:02,-,BRADSHAW,FT | 1 39-28 -11 | | |
| 00:02,-,BRADSHAW,FT | 1 40-28 -12 | | |
| | | | ENGLISH-LURRY TURN -,00:02 |
| | | | |
| 00:02,- FLANERY,JUMPER | 2 ^P 42-28 Period 4 | | |
| Arkansas State | Score | | Georgia Southern |
| 09:52 - FLANERY,3PTR | X | | |
| 09:30 - GILL,JUMPER | X | | |
| | | | FOULKS,3PTR - 09:19 |
| | | | KIRKLAND TURN - 09:05 |
| 08:51 - FLANERY,3PTR | X | | |
| 08:27 - GAMBLE,3PTR | X | | |
| | | | MCGOWAN,FT,- 08:17 |
| | | | MCGOWAN,FT,- 08:17 |
| 08:03 - FLANERY,JUMPER | X | | |
| | | | MCGOWAN,LAYUP,- 07:57 |
| 07:44,-,BROWN- HAYWOOD,JUMPER | 2 ^P 60-42 -18 | | |
| | | | BUTLER TURN - 07:23 |
| 07:20,-,BROWN- HAYWOOD,LAYUP | 2 ^{PF} 62-42 -20 | | |
| | | | MCGOWAN,3PTR - 06:46 |

06:10,-,GAMBLE TURN TO

05:53,-,BROWN-HAYWOOD,LAYUP

05:07,-,GILL,LAYUP

04:09,-,FLANERY TURN

03:19,-,GAMBLE,JUMPER

02:31 - BROWN-HAYWOOD,3PTR

02:04,-,BROWN-HAYWOOD,FT

02:04 - BROWN-HAYWOOD,FT

01:32 - FOWLER,3PTR

01:18 - FOWLER,3PTR

00:48,-,OLIVER,LAYUP

X SAMS,3PTR - 06:03

2P 51-34-17 X MCGOWAN,3PTR - 05:35

2P 53-34-19 X KIRKLAND,3PTR - 04:52

X SAMS,LAYUP - 03:53

X BUTLER,LAYUP - 03:49

X SAMS,JUMPER - 03:45

53-36-17 2P BUTLER,JUMPER,- 03:31

2 55-36-19 2P KIRKLAND,LAYUP,- 02:46

55-38-17 2P

X MCGOWAN,JUMPER - 02:12

1 56-38-18

X SAMS,3PTR - 01:56

X

X

TO SAMS TURN -,00:53

2P 58-38-20 X KIRKLAND,JUMPER - 00:18

X JONES,JUMPER - 00:14

06:37 - BROWN-HAYWOOD,3PTR

05:51 - BROWN-HAYWOOD,JUMPER

05:27,-,BROWN-HAYWOOD,FT

05:27,-,BROWN-HAYWOOD,FT

05:27,-,BROWN-HAYWOOD,FT

04:51,-,BROWN-HAYWOOD,JUMPER

04:25 - HOLLOWAY,3PTR

03:46,-,HOLLOWAY TURN

03:02,-,LADD,FT

03:02,-,LADD,FT

02:28,-,LADD,3PTR

01:49,-,WESTBROOK,JUMPER

01:29,-,HOLLOWAY,LAYUP

01:01,-,LADD,3PTR

00:32,-,OBINABO TURN TO

X

62-45-17 3 MCGOWAN,3PTR,- 06:08

X

1 63-45-18

1 64-45-19

1 65-45-20

X MCGOWAN,3PTR - 05:05

TO TEAM TURN -,05:03

2P 67-45-22 X SAMS,FT - 04:32

X SAMS,FT - 04:32

X

X

TO FOULKS TURN - 04:09

TO KIRKLAND TURN - 03:29

1 68-45-23

1 69-45-24

X BURKE,JUMPER - 02:48

X BUTLER,FT - 02:41

69-46-23 1 BUTLER,FT,-,02:41

3 72-46-26 X MARCUS,JUMPER - 02:12

2 74-46-28

TO BURKE TURN - 01:33

2PF 76-46-30

76-48-28 2P BUTLER,LAYUP,- 01:13

3 79-48-31 X BURKE,3PTR - 00:45

79-50-29 2P MARCUS,LAYUP,- 00:42

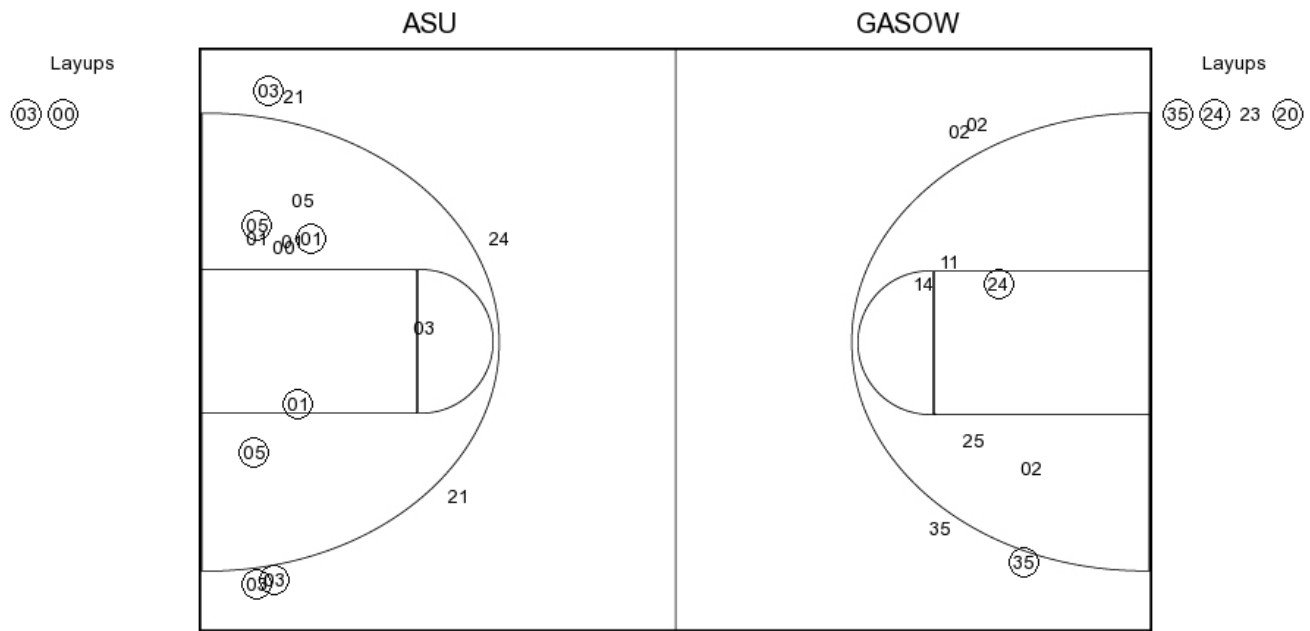
79-52-27 2PF FOULKS,LAYUP,- 00:26

Arkansas State vs Georgia Southern

OFFICIAL SHOT CHART

2/18/2016 at Statesboro, GA (Hanner Fieldhouse)

PERIOD 1



ASU PERIOD 1

| | |
|----------------|----|
| FG Made | 14 |
| FG Attempted | 30 |
| 3PFG Made | 5 |
| 3PFG Attempted | 11 |

GASOW PERIOD 1

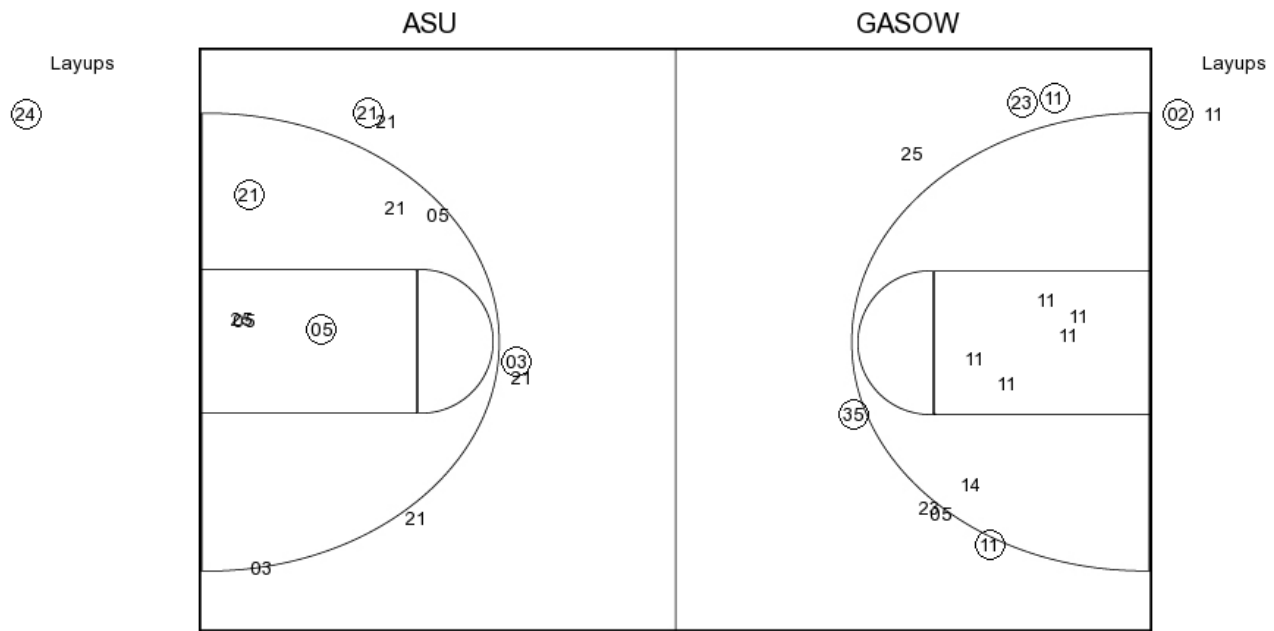
| | |
|----------------|----|
| FG Made | 10 |
| FG Attempted | 29 |
| 3PFG Made | 5 |
| 3PFG Attempted | 11 |

Arkansas State vs Georgia Southern

OFFICIAL SHOT CHART

2/18/2016 at Statesboro, GA (Hanner Fieldhouse)

PERIOD 2



ASU PERIOD 2

- FG Made
- FG Attempted
- 3PFG Made
- 3PFG Attempted

GASOW PERIOD 2

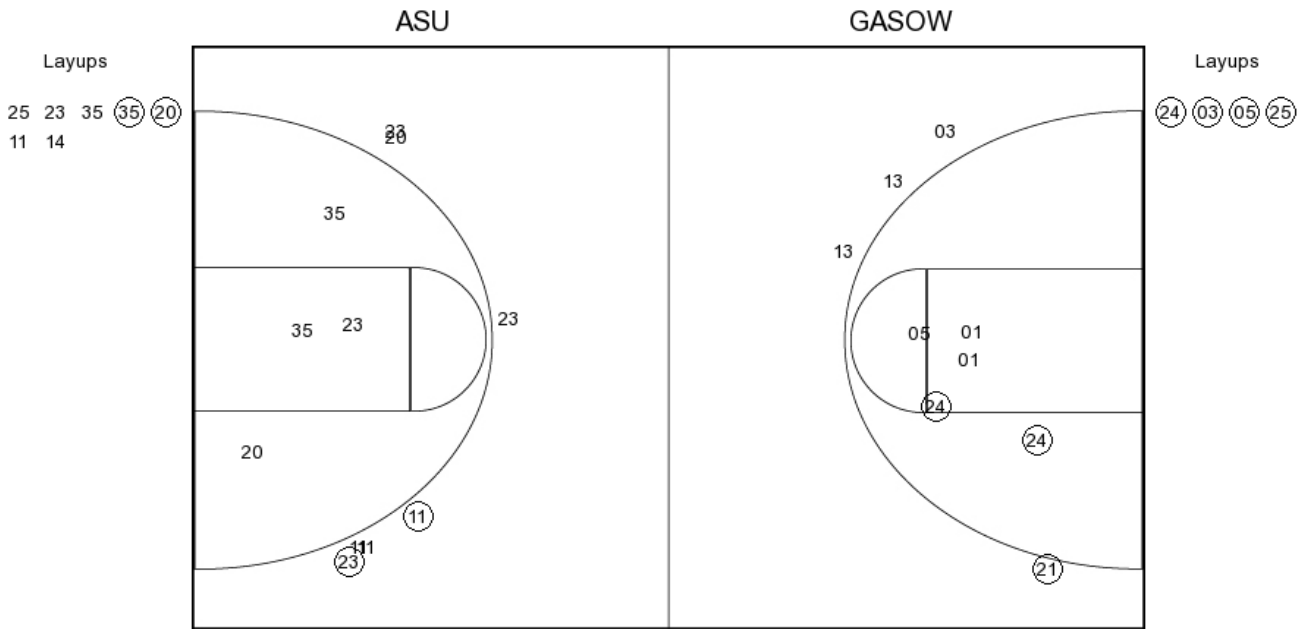
- FG Made
- FG Attempted
- 3PFG Made
- 3PFG Attempted

Arkansas State vs Georgia Southern

OFFICIAL SHOT CHART

2/18/2016 at Statesboro, GA (Hanner Fieldhouse)

PERIOD 3



ASU PERIOD 3

| | |
|----------------|----|
| FG Made | 14 |
| FG Attempted | 28 |
| 3PFG Made | 3 |
| 3PFG Attempted | 11 |

GASOW PERIOD 3

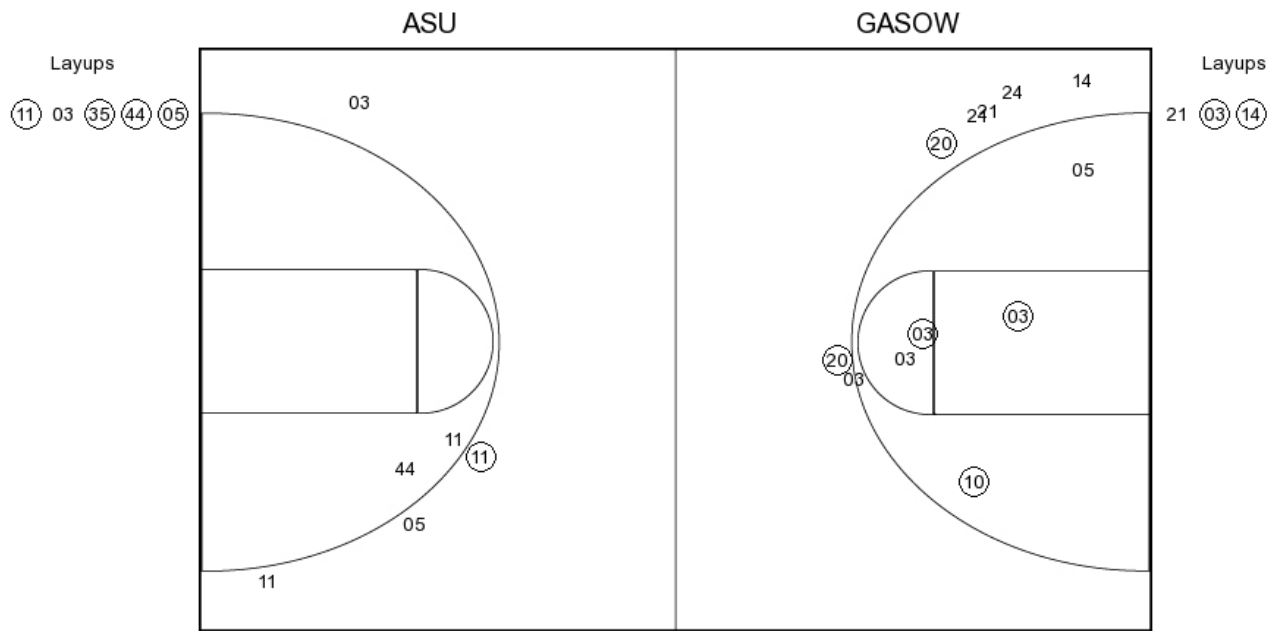
| | |
|----------------|----|
| FG Made | 9 |
| FG Attempted | 29 |
| 3PFG Made | 3 |
| 3PFG Attempted | 12 |

Arkansas State vs Georgia Southern

OFFICIAL SHOT CHART

2/18/2016 at Statesboro, GA (Hanner Fieldhouse)

PERIOD 4



ASU PERIOD 4

- FG Made
- FG Attempted
- 3PFG Made
- 3PFG Attempted

GASOW PERIOD 4

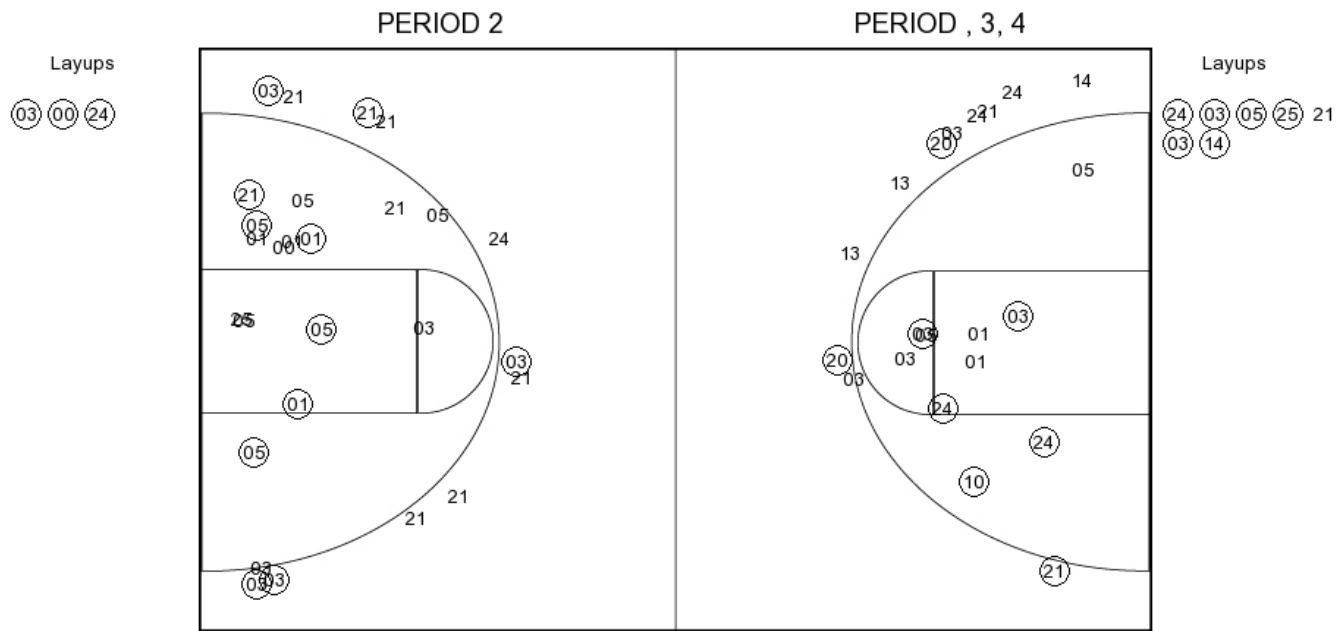
- FG Made
- FG Attempted
- 3PFG Made
- 3PFG Attempted

Arkansas State vs Georgia Southern

OFFICIAL SHOT CHART

2/18/2016 at Statesboro, GA (Hanner Fieldhouse)

Arkansas State



ASU PERIOD 1

| | |
|----------------|----|
| FG Made | 14 |
| FG Attempted | 30 |
| 3PFG Made | 5 |
| 3PFG Attempted | 11 |

ASU PERIOD 2

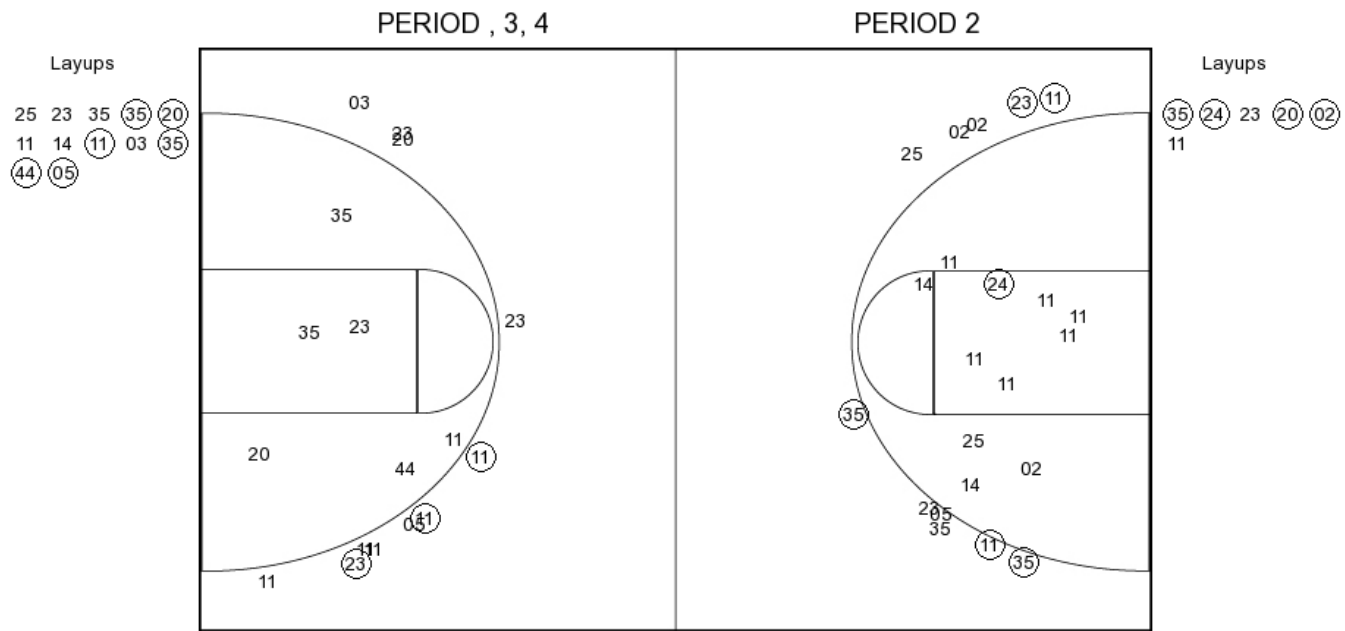
| | |
|----------------|--|
| FG Made | |
| FG Attempted | |
| 3PFG Made | |
| 3PFG Attempted | |

Arkansas State vs Georgia Southern

OFFICIAL SHOT CHART

2/18/2016 at Statesboro, GA (Hanner Fieldhouse)

Georgia Southern



GASOW PERIOD 1

| | |
|----------------|----|
| FG Made | 10 |
| FG Attempted | 29 |
| 3PFG Made | 5 |
| 3PFG Attempted | 11 |

GASOW PERIOD 2

| | |
|----------------|--|
| FG Made | |
| FG Attempted | |
| 3PFG Made | |
| 3PFG Attempted | |