



**NEBRASKA VS. ARKANSAS-
PINE BLUFF
BARCLAYS CENTER CLASSIC**

11/24/2015
Pinnacle Bank Arena (Lincoln, Neb.)

FINAL STATS

Nebraska
(4-1)

67

Arkansas-Pine Bluff
(1-4)

44

Start Time: 7:05 p.m.
Officials: Chris Beaver, Earl Walton, Gerald Williams
Attendance: 15502

Actual Attendance:10539

Official Basketball Box Score -- Game Totals -- Final Statistics
Arkansas-Pine Bluff vs Nebraska
11/24/2015 7:05 p.m. at Pinnacle Bank Arena (Lincoln, Neb.)

Arkansas-Pine Bluff 44 - 1-4

##	Player	S	Total		3-Ptr	FT-FTA	Rebounds			PF	TP	A	TO	Blk	Stl	Min
			FG-FGA	3PT FG-FGA	Off Reb		Def Reb	Tot Reb								
03	HANDLEY.THADDEUS	f	3-3	0-0	0-0	0-0	1	4	5	2	6	0	1	0	3	22
14	WALLACE.MARCUS	g	1-3	0-1	0-0	0-0	0	2	2	0	2	1	0	0	0	27
22	LOVE.JOVAUGHN	f	1-9	0-2	3-4	3-4	1	4	5	3	5	2	0	0	0	30
23	ROBINSON.GHIAVONNI	g	3-11	1-3	6-11	6-11	0	2	2	2	13	1	1	0	2	32
34	BERRY.DEVIN	f	0-1	0-0	0-0	0-0	0	1	1	2	0	0	2	1	0	5
01	JACKSON.CHARLES		3-7	1-3	1-2	1-2	1	1	2	4	8	0	2	0	0	12
10	LYNCH.JAQUAN		1-3	1-3	0-0	0-0	0	1	1	0	3	1	0	0	0	15
12	CUNNINGHAM.MARQUIS		1-3	0-0	0-1	0-1	1	2	3	1	2	0	0	1	0	12
13	COX.AUSTIN		0-0	0-0	0-0	0-0	0	1	1	1	0	0	0	0	0	3
15	WHITING.TRENT		0-1	0-0	0-0	0-0	0	0	0	2	0	0	1	0	0	8
21	JOHNSON.LARRY		0-1	0-0	0-0	0-0	0	0	0	1	0	0	0	0	1	3
25	PARKER.CHAUNCY		1-2	0-0	1-2	1-2	1	3	4	2	3	1	2	4	0	11
30	BAYLESS.DESHON		1-3	0-1	0-0	0-0	1	3	4	5	2	0	0	0	0	13
52	TILLMAN.DAVID		0-2	0-0	0-0	0-0	0	0	0	2	0	0	2	1	0	7
TEAM							1	2	3	0			1			
TOTALS			15-49	3-13	11-20		7	26	33	27	44	6	12	7	6	200

FG % 1st Half: 6-26 23.1% 2nd Half: 9-23 39.1% Game: 15-49 30.6% Deadball
 3FG % 1st Half: 0-5 00.0% 2nd Half: 3-8 37.5% Game: 3-13 23.1% Rebounds
 FT % 1st Half: 4-10 40.0% 2nd Half: 7-10 70.0% Game: 11-20 55.0% 2,0

Nebraska 67 - 4-1

##	Player	S	Total		3-Ptr	FT-FTA	Rebounds			PF	TP	A	TO	Blk	Stl	Min
			FG-FGA	3PT FG-FGA	Off Reb		Def Reb	Tot Reb								
00	WEBSTER.TAI	g	1-3	0-1	2-3	2-3	1	4	5	3	4	2	2	1	0	23
03	WHITE III.ANDREW	g	5-11	1-6	5-6	5-6	1	4	5	2	16	0	2	0	1	21
24	HAMMOND.JAKE	f	3-5	0-0	0-0	0-0	3	4	7	1	6	0	0	0	0	16
31	SHIELDS.SHAVON	f	6-11	0-1	3-5	3-5	2	3	5	2	15	2	1	0	1	24
32	PARKER.BENNY	g	0-4	0-2	0-1	0-1	0	0	0	1	0	0	0	0	0	21
04	TRUEBLOOD.JOHNNY		0-0	0-0	0-0	0-0	0	0	0	0	0	0	0	0	0	1
05	WATSON JR..GLYNN		2-4	1-1	1-1	1-1	0	1	1	0	6	3	0	0	2	20
10	MCVEIGH.JACK		0-7	0-5	1-2	1-2	0	4	4	2	1	1	1	0	0	19
11	EVELYN.BAKARI		2-4	0-2	2-2	2-2	2	1	3	0	6	1	0	0	0	8
12	JACOBSON.MICHAEL		1-2	0-0	4-4	4-4	2	6	8	4	6	0	2	0	0	14
15	LAWS.MALCOLM		0-0	0-0	0-0	0-0	0	0	0	1	0	0	0	0	0	3
20	BORCHARDT.TANNER		0-0	0-0	0-0	0-0	0	0	0	1	0	0	1	0	0	5
23	FULLER.NICK		0-1	0-1	3-4	3-4	1	1	2	1	3	0	0	0	1	10
30	MORROW JR..ED		1-3	0-0	2-4	2-4	2	3	5	3	4	1	2	3	0	15
TEAM							2	3	5	0			0			
TOTALS			21-55	2-19	23-32		16	34	50	21	67	10	11	4	5	200

FG % 1st Half: 11-34 32.4% 2nd Half: 10-21 47.6% Game: 21-55 38.2% Deadball
 3FG % 1st Half: 2-10 20.0% 2nd Half: 0-9 00.0% Game: 2-19 10.5% Rebounds
 FT % 1st Half: 10-15 66.7% 2nd Half: 13-17 76.5% Game: 23-32 71.9% 1,0

Officials: Chris Beaver, Earl Walton, Gerald Williams
 Technical Fouls: Arkansas-Pine Bluff- None. Nebraska- None.
 Attendance: 15502
 Actual Attendance:10539

Score by periods	1st	2nd	Total
Arkansas-Pine Bluff	16	28	44
Nebraska	34	33	67

Points	In Paint	Off T/O	2nd Chance	Fast Break	Bench
UAPBM	18	4	5	2	18
NEB	30	15	5	10	26

Last FG - UAPBM 2nd-01:00, NEB 2nd-00:26.
 Largest lead - Arkansas-Pine Bluff by ; Nebraska by 26 2nd-08:59
 UAPBM led for 0:00. NEB led for 38:48. Game was tied for 1:12.

Score tied - 1 times
 Lead changed - 0 times

Official Basketball Box Score -- Game Totals -- First Half Statistics

Arkansas-Pine Bluff vs Nebraska

11/24/2015 7:05 p.m. at Pinnacle Bank Arena (Lincoln, Neb.)

Arkansas-Pine Bluff 16 • 1-4

##	Player	S	Total			Rebounds			PF	TP	A	TO	Blk	Stl	Min
			FG-FGA	3PT FG-FGA	FT-FTA	Off Reb	Def Reb	Tot Reb							
03	HANDLEY.THADDEUS	f	2-2	0-0	0-0	0	2	2	1	4	0	1	0	1	11
14	WALLACE.MARCUS	g	0-1	0-0	0-0	0	2	2	0	0	0	0	0	11	
22	LOVE.JOVAUGHN	f	0-4	0-2	0-0	0	1	1	2	0	0	0	0	14	
23	ROBINSON.GHIAVONNI	g	1-6	0-1	3-7	0	2	2	0	5	0	0	0	14	
34	BERRY.DEVIN	f	0-1	0-0	0-0	0	0	0	1	0	0	0	1	2	
01	JACKSON.CHARLES		1-2	0-0	0-0	0	1	1	2	2	0	2	0	5	
10	LYNCH.JAQUAN		0-2	0-2	0-0	0	1	1	0	0	1	0	0	10	
12	CUNNINGHAM.MARQUIS		1-2	0-0	0-1	1	1	2	1	2	0	0	0	5	
13	COX.AUSTIN		0-0	0-0	0-0	0	0	0	0	0	0	0	0	0	
15	WHITING.TRENT		0-1	0-0	0-0	0	0	0	0	0	0	0	0	5	
21	JOHNSON.LARRY		0-1	0-0	0-0	0	0	0	1	0	0	0	1	2	
25	PARKER.CHAUNCY		0-1	0-0	1-2	1	3	4	1	1	0	2	4	9	
30	BAYLESS.DESHON		1-2	0-0	0-0	0	3	3	2	2	0	0	0	9	
52	TILLMAN.DAVID		0-1	0-0	0-0	0	0	0	2	0	0	1	1	3	
TEAM						0	2	2	0		0				
Totals			6-26	0-5	4-10	2	18	20	13	16	1	6	6	4	100

FG % Half: 6-26 23.1%
 3FG % Half: 0-5 00.0%
 FT % Half: 4-10 40.0%

Nebraska 34 • 4-1

##	Player	S	Total			Rebounds			PF	TP	A	TO	Blk	Stl	Min
			FG-FGA	3PT FG-FGA	FT-FTA	Off Reb	Def Reb	Tot Reb							
00	WEBSTER.TAI	g	1-2	0-0	0-1	1	3	4	2	2	1	1	1	0	12
03	WHITE III.ANDREW	g	3-7	1-4	5-6	1	4	5	1	12	0	1	0	1	13
24	HAMMOND.JAKE	f	2-4	0-0	0-0	3	4	7	1	4	0	0	0	11	
31	SHIELDS.SHAVON	f	4-9	0-1	3-5	2	2	4	1	11	1	0	0	17	
32	PARKER.BENNY	g	0-3	0-1	0-1	0	0	0	1	0	0	0	0	15	
04	TRUEBLOOD.JOHNNY		0-0	0-0	0-0	0	0	0	0	0	0	0	0	0	
05	WATSON JR..GLYNN		1-2	1-1	0-0	0	1	1	0	3	3	0	0	9	
10	MCVEIGH.JACK		0-4	0-3	0-0	0	3	3	0	0	1	1	0	11	
11	EVELYN.BAKARI		0-0	0-0	0-0	0	0	0	0	0	0	0	0	0	
12	JACOBSON.MICHAEL		0-1	0-0	0-0	1	3	4	2	0	0	1	0	4	
15	LAWS.MALCOLM		0-0	0-0	0-0	0	0	0	0	0	0	0	0	0	
20	BORCHARDT.TANNER		0-0	0-0	0-0	0	0	0	0	0	0	0	0	1	
23	FULLER.NICK		0-0	0-0	2-2	1	0	1	1	2	0	0	0	3	
30	MORROW JR..ED		0-2	0-0	0-0	1	2	3	2	0	0	1	1	4	
TEAM						0	1	1	0		0				
Totals			11-34	2-10	10-15	10	23	33	11	34	6	5	2	3	100

FG % Half: 11-34 32.4%
 3FG % Half: 2-10 20.0%
 FT % Half: 10-15 66.7%

Officials: Chris Beaver, Earl Walton, Gerald Williams
 Technical Fouls: Arkansas-Pine Bluff- None. Nebraska- None.
 Actual Attendance:10539

Score by periods	1st	2nd	Total
Arkansas-Pine Bluff	16	28	44
Nebraska	34	33	67

Points	In Paint	Off T/O	2nd Chance	Fast Break	Bench
UAPBM	8	0	0	0	7
NEB	16	6	11	8	5

Last FG - UAPBM 1st-08:03, NEB 1st-00:49.
 UAPBM led for 0:00. NEB led for 18:48. Game was tied for 1:12.

Score tied - 0 times
 Lead changed - 0 times

Arkansas-Pine Bluff vs Nebraska
11/24/2015; 7:05 p.m. at Pinnacle Bank Arena (Lincoln, Neb.)
Period 1 Play-By-Play

VISITORS: Arkansas-Pine Bluff	Time	Score	Margin	HOME: Nebraska
	19:38			MISSED 3PTR by WHITE III,ANDREW
	19:38			REBOUND (OFF) by HAMMOND,JAKE
	19:22			MISSED JUMPER by SHIELDS,SHAVON
BLOCK by BERRY,DEVIN	19:22			
REBOUND (DEF) by ROBINSON,GHIAVONNI	19:20			
TURNOVER by HANDLEY,THADDEUS	19:07			
	19:06			STEAL by SHIELDS,SHAVON
	19:02	2-0	H 2	GOOD! LAYUP by SHIELDS,SHAVON [FB/PNT]
MISSED LAYUP by BERRY,DEVIN	18:43			
	18:43			REBOUND (DEF) by WEBSTER,TAI
	18:36			MISSED JUMPER by WEBSTER,TAI
REBOUND (DEF) by WALLACE,MARCUS	18:36			
GOOD! LAYUP by ROBINSON,GHIAVONNI [PNT]	18:18	2-2	T	
	18:18			FOUL by WEBSTER,TAI
MISSED FT by ROBINSON,GHIAVONNI	18:18			
	18:18			REBOUND (DEF) by WHITE III,ANDREW
SUB IN: BAYLESS,DESHON	18:18			
SUB OUT: HANDLEY,THADDEUS	18:18			
FOUL by BERRY,DEVIN	18:04			
	18:04	3-2	H 1	GOOD! FT by WHITE III,ANDREW
	18:04	4-2	H 2	GOOD! FT by WHITE III,ANDREW
MISSED JUMPER by ROBINSON,GHIAVONNI	17:49			
	17:49			REBOUND (DEF) by WEBSTER,TAI
	17:42			MISSED LAYUP by SHIELDS,SHAVON
	17:42			REBOUND (OFF) by WHITE III,ANDREW
	17:40	6-2	H 4	GOOD! JUMPER by WHITE III,ANDREW [PNT]
FOUL by BAYLESS,DESHON	17:40			
	17:40	7-2	H 5	GOOD! FT by WHITE III,ANDREW
SUB IN: JACKSON,CHARLES	17:40			
SUB IN: PARKER,CHAUNCY	17:40			
SUB OUT: BERRY,DEVIN	17:40			
SUB OUT: BAYLESS,DESHON	17:40			
MISSED JUMPER by LOVE,JOVAUGHN	17:21			
	17:21			REBOUND (DEF) by HAMMOND,JAKE
	17:14			MISSED JUMPER by SHIELDS,SHAVON
BLOCK by PARKER,CHAUNCY	17:14			
REBOUND (DEF) by TEAM	17:13			
FOUL by PARKER,CHAUNCY	16:59			
TURNOVER by PARKER,CHAUNCY	16:59			
	16:41			MISSED 3PTR by PARKER,BENNY
	16:41			REBOUND (OFF) by WEBSTER,TAI
	16:36			TURNOVER by WEBSTER,TAI
STEAL by ROBINSON,GHIAVONNI	16:35			
MISSED LAYUP by WALLACE,MARCUS	16:31			
	16:31			REBOUND (DEF) by WHITE III,ANDREW
	16:26	9-2	H 7	GOOD! LAYUP by WEBSTER,TAI [FB/PNT]
FOUL by LOVE,JOVAUGHN	16:26			
	16:26			MISSED FT by WEBSTER,TAI
REBOUND (DEF) by LOVE,JOVAUGHN	16:26			
	16:26			SUB IN: MORROW JR.,ED
	16:26			SUB OUT: HAMMOND,JAKE
GOOD! JUMPER by JACKSON,CHARLES [PNT]	16:18	9-4	H 5	
	15:59			MISSED 3PTR by WHITE III,ANDREW

VISITORS: Arkansas-Pine Bluff	Time	Score	Margin	HOME: Nebraska
BLOCK by PARKER,CHAUNCY	15:59			
	15:56			REBOUND (OFF) by SHIELDS,SHAVON
	15:55	11-4	H 7	GOOD! JUMPER by SHIELDS,SHAVON
	15:49			FOUL by PARKER,BENNY
TIMEOUT MEDIA	15:49			
GOOD! FT by ROBINSON,GHIAVONNI	15:49	11-5	H 6	
MISSED FT by ROBINSON,GHIAVONNI	15:49			
	15:49			REBOUND (DEF) by MORROW JR.,ED
SUB IN: BAYLESS,DESHON	15:49			
SUB OUT: WALLACE,MARCUS	15:49			
	15:49			SUB IN: MCVEIGH,JACK
	15:49			SUB OUT: WHITE III,ANDREW
	15:33			MISSED JUMPER by SHIELDS,SHAVON
REBOUND (DEF) by JACKSON,CHARLES	15:33			
TURNOVER by JACKSON,CHARLES	15:07			
	14:55			MISSED JUMPER by MORROW JR.,ED
REBOUND (DEF) by PARKER,CHAUNCY	14:55			
MISSED JUMPER by ROBINSON,GHIAVONNI	14:33			
REBOUND (OFF) by PARKER,CHAUNCY	14:33			
MISSED JUMPER by ROBINSON,GHIAVONNI	14:24			
	14:24			BLOCK by MORROW JR.,ED
	14:23			REBOUND (DEF) by SHIELDS,SHAVON
FOUL by JACKSON,CHARLES	14:21			
	14:21			SUB IN: JACOBSON,MICHAEL
	14:21			SUB IN: WATSON JR.,GLYNN
	14:21			SUB IN: WHITE III,ANDREW
	14:21			SUB OUT: SHIELDS,SHAVON
	14:21			SUB OUT: PARKER,BENNY
	14:21			SUB OUT: MORROW JR.,ED
	14:06			MISSED JUMPER by MCVEIGH,JACK
BLOCK by PARKER,CHAUNCY	14:06			
REBOUND (DEF) by BAYLESS,DESHON	14:03			
MISSED LAYUP by JACKSON,CHARLES	14:00			
	14:00			BLOCK by WEBSTER,TAI
	13:58			REBOUND (DEF) by JACOBSON,MICHAEL
	13:56			TURNOVER by JACOBSON,MICHAEL
STEAL by ROBINSON,GHIAVONNI	13:55			
SUB IN: WALLACE,MARCUS	13:40			
SUB IN: LYNCH,JAQUAN	13:40			
SUB OUT: JACKSON,CHARLES	13:40			
SUB OUT: ROBINSON,GHIAVONNI	13:40			
	13:40			SUB IN: PARKER,BENNY
	13:40			SUB OUT: WEBSTER,TAI
MISSED 3PTR by LOVE,JOVAUGHN	13:25			
	13:25			REBOUND (DEF) by JACOBSON,MICHAEL
	13:11			MISSED JUMPER by PARKER,BENNY
BLOCK by PARKER,CHAUNCY	13:11			
REBOUND (DEF) by PARKER,CHAUNCY	13:10			
	13:10			FOUL by JACOBSON,MICHAEL
MISSED JUMPER by BAYLESS,DESHON	12:56			
	12:56			REBOUND (DEF) by JACOBSON,MICHAEL
	12:41			MISSED JUMPER by WATSON JR.,GLYNN
REBOUND (DEF) by WALLACE,MARCUS	12:41			
MISSED JUMPER by PARKER,CHAUNCY	12:27			
	12:27			REBOUND (DEF) by TEAM
SUB IN: TILLMAN,DAVID	12:25			
SUB IN: HANDLEY,THADDEUS	12:25			
SUB OUT: LOVE,JOVAUGHN	12:25			

VISITORS: Arkansas-Pine Bluff	Time	Score	Margin	HOME: Nebraska
SUB OUT: PARKER,CHAUNCY	12:25			
	12:10			MISSED 3PTR by WHITE III,ANDREW
REBOUND (DEF) by HANDLEY,THADDEUS	12:10			
TURNOVER by TILLMAN,DAVID	11:42			
	11:42			TIMEOUT MEDIA
	11:42			SUB IN: SHIELDS,SHAVON
	11:42			SUB OUT: MCVEIGH,JACK
	11:24			MISSED JUMPER by JACOBSON,MICHAEL
BLOCK by TILLMAN,DAVID	11:24			
	11:22			REBOUND (OFF) by JACOBSON,MICHAEL
	11:19	13-5	H 8	GOOD! LAYUP by SHIELDS,SHAVON [PNT]
GOOD! LAYUP by BAYLESS,DESHON [PNT]	11:01	13-7	H 6	
FOUL by HANDLEY,THADDEUS	10:46			
	10:46			SUB IN: HAMMOND,JAKE
	10:46			SUB OUT: JACOBSON,MICHAEL
	10:44			MISSED JUMPER by WHITE III,ANDREW
REBOUND (DEF) by BAYLESS,DESHON	10:44			
	10:42			SUB IN: WEBSTER,TAI
	10:42			SUB OUT: WHITE III,ANDREW
	10:27			FOUL by SHIELDS,SHAVON
	10:27			SUB IN: FULLER,NICK
	10:27			SUB OUT: WATSON JR.,GLYNN
MISSED JUMPER by TILLMAN,DAVID	10:13			
	10:13			REBOUND (DEF) by WEBSTER,TAI
FOUL by TILLMAN,DAVID	09:55			
	09:55	14-7	H 7	GOOD! FT by SHIELDS,SHAVON
	09:55	15-7	H 8	GOOD! FT by SHIELDS,SHAVON
GOOD! JUMPER by HANDLEY,THADDEUS [PNT]	09:34	15-9	H 6	
FOUL by TILLMAN,DAVID	09:19			
	09:19			MISSED FT by PARKER,BENNY
REBOUND (DEF) by CUNNINGHAM,MARQUIS	09:19			
SUB IN: CUNNINGHAM,MARQUIS	09:19			
SUB OUT: TILLMAN,DAVID	09:19			
GOOD! JUMPER by CUNNINGHAM,MARQUIS	09:03	15-11	H 4	
ASSIST by LYNCH,JAQUAN	09:03			
FOUL by BAYLESS,DESHON	08:51			
	08:51			MISSED FT by SHIELDS,SHAVON
REBOUND (DEF) by HANDLEY,THADDEUS	08:51			
SUB IN: WHITING,TRENT	08:51			
SUB IN: ROBINSON,GHIAVONNI	08:51			
SUB OUT: BAYLESS,DESHON	08:51			
SUB OUT: WALLACE,MARCUS	08:51			
	08:45			FOUL by FULLER,NICK
MISSED 3PTR by LYNCH,JAQUAN	08:32			
	08:32			REBOUND (DEF) by HAMMOND,JAKE
	08:10			MISSED LAYUP by PARKER,BENNY
REBOUND (DEF) by ROBINSON,GHIAVONNI	08:10			
GOOD! JUMPER by HANDLEY,THADDEUS	08:03	15-13	H 2	
	07:46	17-13	H 4	GOOD! JUMPER by HAMMOND,JAKE [PNT]
	07:46			ASSIST by SHIELDS,SHAVON
MISSED JUMPER by WHITING,TRENT	07:29			
	07:29			REBOUND (DEF) by HAMMOND,JAKE
	07:18			MISSED JUMPER by HAMMOND,JAKE
	07:18			REBOUND (OFF) by FULLER,NICK
FOUL by CUNNINGHAM,MARQUIS	07:14			
	07:14			TIMEOUT MEDIA
	07:14	18-13	H 5	GOOD! FT by FULLER,NICK
	07:14	19-13	H 6	GOOD! FT by FULLER,NICK

VISITORS: Arkansas-Pine Bluff	Time	Score	Margin	HOME: Nebraska
SUB IN: LOVE,JOVAUGHN	07:14			
SUB OUT: HANDLEY,THADDEUS	07:14			
	07:14			SUB IN: WHITE III,ANDREW
	07:14			SUB IN: MORROW JR.,ED
	07:14			SUB IN: MCVEIGH,JACK
	07:14			SUB OUT: HAMMOND,JAKE
	07:14			SUB OUT: FULLER,NICK
	07:14			SUB OUT: WEBSTER,TAI
MISSED LAYUP by LOVE,JOVAUGHN	06:57			
	06:57			REBOUND (DEF) by MORROW JR.,ED
	06:50			MISSED 3PTR by MCVEIGH,JACK
REBOUND (DEF) by TEAM	06:50			
	06:47			FOUL by MORROW JR.,ED
MISSED 3PTR by LYNCH,JAQUAN	06:18			
	06:18			REBOUND (DEF) by MCVEIGH,JACK
	06:10			MISSED 3PTR by SHIELDS,SHAVON
	06:10			REBOUND (OFF) by MORROW JR.,ED
	06:05			MISSED JUMPER by MORROW JR.,ED
REBOUND (DEF) by LYNCH,JAQUAN	06:05			
MISSED 3PTR by ROBINSON,GHIAVONNI	05:35			
REBOUND (OFF) by CUNNINGHAM,MARQUIS	05:35			
MISSED LAYUP by CUNNINGHAM,MARQUIS	05:17			
	05:17			REBOUND (DEF) by WHITE III,ANDREW
	05:11			FOUL by MORROW JR.,ED
	05:11			TURNOVER by MORROW JR.,ED
	05:11			SUB IN: JACOBSON,MICHAEL
	05:11			SUB OUT: MORROW JR.,ED
	04:49			FOUL by JACOBSON,MICHAEL
MISSED FT by CUNNINGHAM,MARQUIS	04:49			
	04:49			REBOUND (DEF) by HAMMOND,JAKE
	04:49			SUB IN: HAMMOND,JAKE
	04:49			SUB IN: WATSON JR.,GLYNN
	04:49			SUB OUT: PARKER,BENNY
	04:49			SUB OUT: JACOBSON,MICHAEL
	04:28	22-13	H 9	GOOD! 3PTR by WHITE III,ANDREW
	04:28			ASSIST by WATSON JR.,GLYNN
	04:11			FOUL by WHITE III,ANDREW
GOOD! FT by ROBINSON,GHIAVONNI	04:11	22-14	H 8	
GOOD! FT by ROBINSON,GHIAVONNI	04:11	22-15	H 7	
SUB IN: JACKSON,CHARLES	04:11			
SUB IN: JOHNSON,LARRY	04:11			
SUB IN: PARKER,CHAUNCY	04:11			
SUB IN: HANDLEY,THADDEUS	04:11			
SUB OUT: WHITING,TRENT	04:11			
SUB OUT: ROBINSON,GHIAVONNI	04:11			
SUB OUT: CUNNINGHAM,MARQUIS	04:11			
SUB OUT: LYNCH,JAQUAN	04:11			
FOUL by JACKSON,CHARLES	03:54			
TIMEOUT media	03:54			
	03:54	23-15	H 8	GOOD! FT by SHIELDS,SHAVON
	03:54			MISSED FT by SHIELDS,SHAVON
	03:54			REBOUND (OFF) by SHIELDS,SHAVON
	03:51			MISSED 3PTR by MCVEIGH,JACK
	03:51			REBOUND (OFF) by HAMMOND,JAKE
	03:46			MISSED JUMPER by HAMMOND,JAKE
	03:46			REBOUND (OFF) by HAMMOND,JAKE
FOUL by JOHNSON,LARRY	03:37			
	03:37	24-15	H 9	GOOD! FT by WHITE III,ANDREW

VISITORS: Arkansas-Pine Bluff	Time	Score	Margin	HOME: Nebraska
	03:37	25-15	H 10	GOOD! FT by WHITE III,ANDREW
TURNOVER by JACKSON,CHARLES	03:21			
	03:21			STEAL by WHITE III,ANDREW
	03:19			TURNOVER by WHITE III,ANDREW
STEAL by JOHNSON,LARRY	03:18			
MISSED JUMPER by JOHNSON,LARRY	03:17			
	03:17			REBOUND (DEF) by WATSON JR.,GLYNN
	03:07			TURNOVER by MCVEIGH,JACK
STEAL by HANDLEY,THADDEUS	03:06			
MISSED 3PTR by LOVE,JOVAUGHN	02:48			
	02:48			REBOUND (DEF) by MCVEIGH,JACK
	02:41	27-15	H 12	GOOD! LAYUP by WHITE III,ANDREW [FB/PNT]
	02:41			ASSIST by MCVEIGH,JACK
FOUL by LOVE,JOVAUGHN	02:41			
	02:41			MISSED FT by WHITE III,ANDREW
REBOUND (DEF) by PARKER,CHAUNCY	02:41			
SUB IN: WALLACE,MARCUS	02:41			
SUB IN: ROBINSON,GHIAVONNI	02:41			
SUB OUT: JACKSON,CHARLES	02:41			
SUB OUT: JOHNSON,LARRY	02:41			
MISSED JUMPER by ROBINSON,GHIAVONNI	02:18			
	02:18			REBOUND (DEF) by SHIELDS,SHAVON
	02:15			SUB IN: WEBSTER,TAI
	02:15			SUB OUT: WHITE III,ANDREW
	01:57	29-15	H 14	GOOD! JUMPER by HAMMOND,JAKE [PNT]
	01:57			ASSIST by WATSON JR.,GLYNN
TURNOVER by PARKER,CHAUNCY	01:44			
	01:43			STEAL by WATSON JR.,GLYNN
	01:38	31-15	H 16	GOOD! DUNK by SHIELDS,SHAVON [FB/PNT]
	01:38			ASSIST by WATSON JR.,GLYNN
TIMEOUT 30SEC	01:32			
	01:16			FOUL by HAMMOND,JAKE
GOOD! FT by PARKER,CHAUNCY	01:16	31-16	H 15	
MISSED FT by PARKER,CHAUNCY	01:16			
	01:16			REBOUND (DEF) by MCVEIGH,JACK
SUB IN: BAYLESS,DESHON	01:16			
SUB OUT: LOVE,JOVAUGHN	01:16			
	01:16			SUB IN: BORCHARDT,TANNER
	01:16			SUB OUT: HAMMOND,JAKE
	00:49	34-16	H 18	GOOD! 3PTR by WATSON JR.,GLYNN
	00:49			ASSIST by WEBSTER,TAI
	00:15			FOUL by WEBSTER,TAI
MISSED FT by ROBINSON,GHIAVONNI	00:15			
REBOUND (DEADB) by TEAM	00:15			
MISSED FT by ROBINSON,GHIAVONNI	00:15			
	00:15			REBOUND (DEF) by WHITE III,ANDREW
SUB IN: LYNCH,JAQUAN	00:15			
SUB OUT: WALLACE,MARCUS	00:15			
	00:15			SUB IN: WHITE III,ANDREW
	00:15			SUB OUT: WEBSTER,TAI
	00:00			MISSED 3PTR by MCVEIGH,JACK
REBOUND (DEF) by BAYLESS,DESHON	00:00			

	In	Off	2nd	Fast	Bench
Period 1-only	Paint	T/O	Chance	Break	
UA	In	Off	2nd	Fast	7
NEB	Paint	T/O	Chance	Break	Bench
	8	0	0	0	
	16	6	11	8	5

Score tied - 2 times
Lead changed - 0 times

Official Basketball Box Score -- Game Totals -- Second Half Statistics
Arkansas-Pine Bluff vs Nebraska
11/24/2015 7:05 p.m. at Pinnacle Bank Arena (Lincoln, Neb.)

Arkansas-Pine Bluff 28 • 1-4

##	Player	S	Total			Rebounds			PF	TP	A	TO	Blk	Stl	Min
			FG-FGA	3PT FG-FGA	FT-FTA	Off Reb	Def Reb	Tot Reb							
03	HANDLEY.THADDEUS	f	1-1	0-0	0-0	1	2	3	1	2	0	0	0	2	11
14	WALLACE.MARCUS	g	1-2	0-1	0-0	0	0	0	0	2	1	0	0	0	16
22	LOVE.JOVAUGHN	f	1-5	0-0	3-4	1	3	4	1	5	2	0	0	0	16
23	ROBINSON.GHIAVONNI	g	2-5	1-2	3-4	0	0	0	2	8	1	1	0	0	18
34	BERRY.DEVIN	f	0-0	0-0	0-0	0	1	1	1	0	0	2	0	0	3
01	JACKSON.CHARLES		2-5	1-3	1-2	1	0	1	2	6	0	0	0	0	7
10	LYNCH.JAQUAN		1-1	1-1	0-0	0	0	0	0	3	0	0	0	0	5
12	CUNNINGHAM.MARQUIS		0-1	0-0	0-0	0	1	1	0	0	0	0	1	0	7
13	COX.AUSTIN		0-0	0-0	0-0	0	1	1	1	0	0	0	0	0	3
15	WHITING.TRENT		0-0	0-0	0-0	0	0	0	2	0	0	1	0	0	3
21	JOHNSON.LARRY		0-0	0-0	0-0	0	0	0	0	0	0	0	0	0	1
25	PARKER.CHAUNCY		1-1	0-0	0-0	0	0	0	1	2	1	0	0	0	2
30	BAYLESS.DESHON		0-1	0-1	0-0	1	0	1	3	0	0	0	0	0	4
52	TILLMAN.DAVID		0-1	0-0	0-0	0	0	0	0	0	0	1	0	0	4
TEAM						1	0	1	0		1				
Totals			9-23	3-8	7-10	5	8	13	14	28	5	6	1	2	100

FG % Half: 9-23 39.1%
 3FG % Half: 3-8 00.0%
 FT % Half: 7-10 70.0%

Nebraska 33 • 4-1

##	Player	S	Total			Rebounds			PF	TP	A	TO	Blk	Stl	Min
			FG-FGA	3PT FG-FGA	FT-FTA	Off Reb	Def Reb	Tot Reb							
00	WEBSTER.TAI	g	0-1	0-1	2-2	0	1	1	1	2	1	1	0	0	11
03	WHITE III.ANDREW	g	2-4	0-2	0-0	0	0	0	1	4	0	1	0	0	8
24	HAMMOND.JAKE	f	1-1	0-0	0-0	0	0	0	0	2	0	0	0	0	5
31	SHIELDS.SHAVON	f	2-2	0-0	0-0	0	1	1	1	4	1	1	0	0	7
32	PARKER.BENNY	g	0-1	0-1	0-0	0	0	0	0	0	0	0	0	0	6
04	TRUEBLOOD.JOHNNY		0-0	0-0	0-0	0	0	0	0	0	0	0	0	0	1
05	WATSON JR..GLYNN		1-2	0-0	1-1	0	0	0	0	3	0	0	0	1	11
10	MCVEIGH.JACK		0-3	0-2	1-2	0	1	1	2	1	0	0	0	0	8
11	EVELYN.BAKARI		2-4	0-2	2-2	2	1	3	0	6	1	0	0	0	8
12	JACOBSON.MICHAEL		1-1	0-0	4-4	1	3	4	2	6	0	1	0	0	10
15	LAWS.MALCOLM		0-0	0-0	0-0	0	0	0	1	0	0	0	0	0	3
20	BORCHARDT.TANNER		0-0	0-0	0-0	0	0	0	1	0	0	1	0	0	4
23	FULLER.NICK		0-1	0-1	1-2	0	1	1	0	1	0	0	0	1	7
30	MORROW JR..ED		1-1	0-0	2-4	1	1	2	1	4	1	1	2	0	11
TEAM						2	2	4	0		0				
Totals			10-21	0-9	13-17	6	11	17	10	33	4	6	2	2	100

FG % Half: 10-21 47.6%
 3FG % Half: 0-9 20.0%
 FT % Half: 13-17 76.5%

Officials: Chris Beaver, Earl Walton, Gerald Williams
 Technical Fouls: Arkansas-Pine Bluff- None. Nebraska- None.
 Actual Attendance:10539

Score by periods	1st	2nd	Total
Arkansas-Pine Bluff	16	28	44
Nebraska	34	33	67

Points	In Paint	Off T/O	2nd Chance	Fast Break	Bench
UAPBM	10	4	5	2	11
NEB	14	9	9	2	21

Last FG - UAPBM 2nd-01:00, NEB 2nd-00:26.
 UAPBM led for 0:00. NEB led for 20:00. Game was tied for 0:00.

Score tied - 0 times
 Lead changed - 0 times

Arkansas-Pine Bluff vs Nebraska
11/24/2015; 7:05 p.m. at Pinnacle Bank Arena (Lincoln, Neb.)
Period 2 Play-By-Play

VISITORS: Arkansas-Pine Bluff	Time	Score	Margin	HOME: Nebraska
	19:41			TURNOVER by WEBSTER,TAI
STEAL by HANDLEY,THADDEUS	19:41			
TURNOVER by BERRY,DEVIN	19:26			
	19:11	36-16	H 20	GOOD! DUNK by HAMMOND,JAKE [PNT]
	19:11			ASSIST by SHIELDS,SHAVON
MISSED JUMPER by ROBINSON,GHIAVONNI	18:47			
	18:47			REBOUND (DEF) by TEAM
	18:24			MISSED 3PTR by WHITE III,ANDREW
REBOUND (DEF) by HANDLEY,THADDEUS	18:24			
TURNOVER by BERRY,DEVIN	18:02			
	17:51			MISSED 3PTR by WHITE III,ANDREW
REBOUND (DEF) by BERRY,DEVIN	17:51			
MISSED JUMPER by LOVE,JOVAUGHN	17:34			
	17:34			REBOUND (DEF) by TEAM
FOUL by BERRY,DEVIN	17:19			
	17:19	37-16	H 21	GOOD! FT by WEBSTER,TAI
	17:19	38-16	H 22	GOOD! FT by WEBSTER,TAI
SUB IN: PARKER,CHAUNCY	17:19			
SUB OUT: BERRY,DEVIN	17:19			
GOOD! 3PTR by ROBINSON,GHIAVONNI	17:07	38-19	H 19	
ASSIST by PARKER,CHAUNCY	17:07			
	16:44			MISSED 3PTR by PARKER,BENNY
REBOUND (DEF) by LOVE,JOVAUGHN	16:44			
GOOD! JUMPER by HANDLEY,THADDEUS [PNT]	16:38	38-21	H 17	
FOUL by PARKER,CHAUNCY	16:10			
	16:07	40-21	H 19	GOOD! LAYUP by SHIELDS,SHAVON [PNT]
GOOD! JUMPER by PARKER,CHAUNCY [PNT]	15:43	40-23	H 17	
ASSIST by LOVE,JOVAUGHN	15:43			
	15:26	42-23	H 19	GOOD! JUMPER by SHIELDS,SHAVON
	15:26			ASSIST by WEBSTER,TAI
	14:57			FOUL by WEBSTER,TAI
TIMEOUT MEDIA	14:57			
SUB IN: TILLMAN,DAVID	14:57			
SUB OUT: PARKER,CHAUNCY	14:57			
	14:57			SUB IN: WATSON JR.,GLYNN
	14:57			SUB IN: MCVEIGH,JACK
	14:57			SUB IN: MORROW JR.,ED
	14:57			SUB OUT: WEBSTER,TAI
	14:57			SUB OUT: WHITE III,ANDREW
	14:57			SUB OUT: HAMMOND,JAKE
MISSED JUMPER by LOVE,JOVAUGHN	14:28			
	14:28			REBOUND (DEF) by SHIELDS,SHAVON
	14:24			TURNOVER by SHIELDS,SHAVON
TURNOVER by ROBINSON,GHIAVONNI	14:06			
	14:04			STEAL by WATSON JR.,GLYNN
	14:00	44-23	H 21	GOOD! LAYUP by WATSON JR.,GLYNN [FB/PNT]
FOUL by LOVE,JOVAUGHN	13:55			
	13:55	45-23	H 22	GOOD! FT by WATSON JR.,GLYNN
	13:55			SUB IN: WEBSTER,TAI
	13:55			SUB OUT: PARKER,BENNY
	13:44			FOUL by SHIELDS,SHAVON
TIMEOUT 30SEC	13:44			
TIMEOUT MEDIA	13:44			

VISITORS: Arkansas-Pine Bluff	Time	Score	Margin	HOME: Nebraska
MISSED LAYUP by TILLMAN,DAVID	13:35			
	13:35			BLOCK by MORROW JR.,ED
REBOUND (OFF) by HANDLEY,THADDEUS	13:33			
TURNOVER by TILLMAN,DAVID	13:31			
SUB IN: BAYLESS,DESHON	13:31			
SUB OUT: LOVE,JOVAUGHN	13:31			
FOUL by BAYLESS,DESHON	13:19			
	13:19			SUB IN: WHITE III,ANDREW
	13:19			SUB OUT: SHIELDS,SHAVON
	13:08			MISSED 3PTR by MCVEIGH,JACK
REBOUND (DEF) by HANDLEY,THADDEUS	13:08			
	12:46			FOUL by MCVEIGH,JACK
	12:23			FOUL by WHITE III,ANDREW
MISSED FT by ROBINSON,GHIAVONNI	12:23			
REBOUND (DEADB) by TEAM	12:23			
GOOD! FT by ROBINSON,GHIAVONNI	12:23	45-24	H 21	
FOUL by BAYLESS,DESHON	12:15			
	12:01	47-24	H 23	GOOD! LAYUP by WHITE III,ANDREW [PNT]
MISSED JUMPER by ROBINSON,GHIAVONNI	11:40			
REBOUND (OFF) by BAYLESS,DESHON	11:40			
MISSED 3PTR by BAYLESS,DESHON	11:29			
	11:29			REBOUND (DEF) by MCVEIGH,JACK
	11:23			TURNOVER by WHITE III,ANDREW
STEAL by HANDLEY,THADDEUS	11:21			
FOUL by HANDLEY,THADDEUS	11:11			
TIMEOUT media	11:03			
SUB IN: CUNNINGHAM,MARQUIS	11:03			
SUB IN: WHITING,TRENT	11:03			
SUB OUT: HANDLEY,THADDEUS	11:03			
SUB OUT: TILLMAN,DAVID	11:03			
TURNOVER by TEAM	10:55			
	10:38	49-24	H 25	GOOD! JUMPER by WHITE III,ANDREW [PNT]
	10:38			ASSIST by MORROW JR.,ED
GOOD! LAYUP by WALLACE,MARCUS [PNT]	10:12	49-26	H 23	
	10:11			MISSED JUMPER by MCVEIGH,JACK
BLOCK by CUNNINGHAM,MARQUIS	10:11			
	10:11			REBOUND (OFF) by TEAM
SUB IN: COX,AUSTIN	10:11			
SUB IN: LOVE,JOVAUGHN	10:11			
SUB OUT: WHITING,TRENT	10:11			
SUB OUT: BAYLESS,DESHON	10:11			
	10:11			SUB IN: JACOBSON,MICHAEL
	10:11			SUB OUT: WHITE III,ANDREW
	10:06			MISSED 3PTR by WEBSTER,TAI
	10:06			REBOUND (OFF) by JACOBSON,MICHAEL
FOUL by ROBINSON,GHIAVONNI	10:06			
	10:06	50-26	H 24	GOOD! FT by JACOBSON,MICHAEL
	10:05	51-26	H 25	GOOD! FT by JACOBSON,MICHAEL
	09:39			FOUL by MCVEIGH,JACK
MISSED JUMPER by LOVE,JOVAUGHN	09:09			
	09:09			BLOCK by MORROW JR.,ED
	09:08			REBOUND (DEF) by WEBSTER,TAI
FOUL by ROBINSON,GHIAVONNI	08:59			
	08:59	52-26	H 26	GOOD! FT by MCVEIGH,JACK
	08:59			MISSED FT by MCVEIGH,JACK
REBOUND (DEF) by COX,AUSTIN	08:59			
SUB IN: LYNCH,JAQUAN	08:59			
SUB OUT: ROBINSON,GHIAVONNI	08:59			

VISITORS: Arkansas-Pine Bluff	Time	Score	Margin	HOME: Nebraska
GOOD! 3PTR by LYNCH,JAQUAN	08:30	52-29	H 23	
ASSIST by WALLACE,MARCUS	08:30			
FOUL by COX,AUSTIN	08:12			
	08:12	53-29	H 24	GOOD! FT by MORROW JR.,ED
	08:12			MISSED FT by MORROW JR.,ED
REBOUND (DEF) by CUNNINGHAM,MARQUIS	08:12			
SUB IN: JACKSON,CHARLES	08:12			
SUB IN: ROBINSON,GHIAVONNI	08:12			
SUB OUT: WALLACE,MARCUS	08:12			
SUB OUT: COX,AUSTIN	08:12			
	08:12			SUB IN: EVELYN,BAKARI
	08:12			SUB OUT: WEBSTER,TAI
MISSED 3PTR by ROBINSON,GHIAVONNI	07:42			
	07:42			REBOUND (DEF) by MORROW JR.,ED
	07:35			MISSED 3PTR by MCVEIGH,JACK
	07:35			REBOUND (OFF) by TEAM
FOUL by JACKSON,CHARLES	07:34			
	07:34			TIMEOUT media
	07:34			MISSED FT by MORROW JR.,ED
	07:34			REBOUND (DEADB) by TEAM
	07:34	54-29	H 25	GOOD! FT by MORROW JR.,ED
MISSED 3PTR by JACKSON,CHARLES	07:22			
REBOUND (OFF) by LOVE,JOVAUGHN	07:22			
	07:17			FOUL by JACOBSON,MICHAEL
GOOD! FT by LOVE,JOVAUGHN	07:17	54-30	H 24	
MISSED FT by LOVE,JOVAUGHN	07:17			
	07:17			REBOUND (DEF) by JACOBSON,MICHAEL
	07:17			SUB IN: FULLER,NICK
	07:17			SUB OUT: MCVEIGH,JACK
	07:02			TURNOVER by MORROW JR.,ED
	06:52			FOUL by JACOBSON,MICHAEL
GOOD! FT by JACKSON,CHARLES	06:52	54-31	H 23	
MISSED FT by JACKSON,CHARLES	06:52			
	06:52			REBOUND (DEF) by JACOBSON,MICHAEL
	06:50			TURNOVER by JACOBSON,MICHAEL
MISSED JUMPER by CUNNINGHAM,MARQUIS	06:33			
	06:33			REBOUND (DEF) by FULLER,NICK
	06:01			MISSED JUMPER by WATSON JR.,GLYNN
REBOUND (DEF) by LOVE,JOVAUGHN	06:01			
GOOD! LAYUP by ROBINSON,GHIAVONNI [FB/PNT]	05:54	54-33	H 21	
ASSIST by LOVE,JOVAUGHN	05:54			
FOUL by WHITING,TRENT	05:30			
SUB IN: WALLACE,MARCUS	05:30			
SUB OUT: ROBINSON,GHIAVONNI	05:30			
	05:20			MISSED 3PTR by EVELYN,BAKARI
	05:20			REBOUND (OFF) by EVELYN,BAKARI
FOUL by JACKSON,CHARLES	05:16			
	05:16	55-33	H 22	GOOD! FT by EVELYN,BAKARI
	05:16	56-33	H 23	GOOD! FT by EVELYN,BAKARI
SUB IN: JOHNSON,LARRY	05:16			
SUB OUT: JACKSON,CHARLES	05:16			
	05:06			FOUL by MORROW JR.,ED
GOOD! FT by LOVE,JOVAUGHN	05:06	56-34	H 22	
GOOD! FT by LOVE,JOVAUGHN	05:06	56-35	H 21	
SUB IN: JACKSON,CHARLES	05:06			
SUB OUT: WALLACE,MARCUS	05:06			
	04:53			MISSED 3PTR by EVELYN,BAKARI
	04:53			REBOUND (OFF) by MORROW JR.,ED

VISITORS: Arkansas-Pine Bluff	Time	Score	Margin	HOME: Nebraska
	04:49	58-35	H 23	GOOD! JUMPER by MORROW JR.,ED [PNT]
MISSED JUMPER by JACKSON,CHARLES	04:21			
	04:21			REBOUND (DEF) by JACOBSON,MICHAEL
	04:18			SUB IN: BORCHARDT,TANNER
	04:18			SUB OUT: MORROW JR.,ED
	04:05			FOUL by BORCHARDT,TANNER
	04:05			TURNOVER by BORCHARDT,TANNER
SUB IN: WHITING,TRENT	04:05			
SUB IN: WALLACE,MARCUS	04:05			
SUB IN: BAYLESS,DESHON	04:05			
SUB IN: ROBINSON,GHIAVONNI	04:05			
SUB OUT: CUNNINGHAM,MARQUIS	04:05			
SUB OUT: JOHNSON,LARRY	04:05			
SUB OUT: LOVE,JOVAUGHN	04:05			
SUB OUT: LYNCH,JAQUAN	04:05			
	04:05			SUB IN: TRUEBLOOD,JOHNNY
	04:05			SUB OUT: WATSON JR.,GLYNN
GOOD! 3PTR by JACKSON,CHARLES	03:50	58-38	H 20	
ASSIST by ROBINSON,GHIAVONNI	03:50			
TIMEOUT 30SEC	03:46			
	03:46			TIMEOUT MEDIA
FOUL by BAYLESS,DESHON	03:20			
	03:20	59-38	H 21	GOOD! FT by FULLER,NICK
	03:20			MISSED FT by FULLER,NICK
REBOUND (DEF) by LOVE,JOVAUGHN	03:20			
SUB IN: COX,AUSTIN	03:20			
SUB IN: LOVE,JOVAUGHN	03:20			
SUB OUT: JACKSON,CHARLES	03:20			
SUB OUT: BAYLESS,DESHON	03:20			
	03:20			SUB IN: LAWS,MALCOLM
	03:20			SUB OUT: TRUEBLOOD,JOHNNY
TURNOVER by WHITING,TRENT	03:04			
	03:03			STEAL by FULLER,NICK
	02:56	61-38	H 23	GOOD! JUMPER by JACOBSON,MICHAEL
	02:56			ASSIST by EVELYN,BAKARI
MISSED JUMPER by LOVE,JOVAUGHN	02:37			
	02:37			REBOUND (DEF) by EVELYN,BAKARI
FOUL by WHITING,TRENT	02:26			
	02:26	62-38	H 24	GOOD! FT by JACOBSON,MICHAEL
	02:26	63-38	H 25	GOOD! FT by JACOBSON,MICHAEL
SUB IN: JACKSON,CHARLES	02:26			
SUB IN: HANDLEY,THADDEUS	02:26			
SUB OUT: WHITING,TRENT	02:26			
SUB OUT: COX,AUSTIN	02:26			
MISSED 3PTR by WALLACE,MARCUS	02:04			
REBOUND (OFF) by JACKSON,CHARLES	02:04			
GOOD! JUMPER by JACKSON,CHARLES [PNT]	02:00	63-40	H 23	
	01:34	65-40	H 25	GOOD! LAYUP by EVELYN,BAKARI [PNT]
MISSED 3PTR by JACKSON,CHARLES	01:07			
REBOUND (OFF) by TEAM	01:07			
GOOD! JUMPER by LOVE,JOVAUGHN	01:00	65-42	H 23	
	00:33			MISSED 3PTR by FULLER,NICK
	00:33			REBOUND (OFF) by EVELYN,BAKARI
	00:26	67-42	H 25	GOOD! JUMPER by EVELYN,BAKARI
	00:16			FOUL by LAWS,MALCOLM
GOOD! FT by ROBINSON,GHIAVONNI	00:16	67-43	H 24	
GOOD! FT by ROBINSON,GHIAVONNI	00:16	67-44	H 23	

Arkansas-Pine Bluff 44, Nebraska 67

Period 2-only	In Paint	Off T/O	2nd Chance	Fast Break	Bench	
UAPBM	10	4	5	2	11	Score tied - 0 times
NEB	14	9	9	2	21	Lead changed - 0 times

Arkansas-Pine Bluff vs Nebraska
11/24/2015; 7:05 p.m. at Pinnacle Bank Arena (Lincoln, Neb.)
Scoring/Runs Reference

Period 1			Period 2		
Arkansas-Pine Bluff	Score	Nebraska	Arkansas-Pine Bluff	Score	Nebraska
	X	WHITE III 3PTR - 19:38		TO	WEBSTER TURN - 19:41
	X	SHIELDS JUMPER - 19:22	19:26 - BERRY TURN	TO	
19:07 - HANDLEY TURN	TO			16-36 20	2P HAMMOND DUNK - 19:11
	0-2 2	2PF SHIELDS LAYUP - 19:02	18:47 - ROBINSON JUMPER	X	
18:43 - BERRY LAYUP	X				X
		X WEBSTER JUMPER - 18:36	18:02 - BERRY TURN	TO	
18:18 - ROBINSON LAYUP	2P 2-2 0				X WHITE III 3PTR - 18:24
18:18 - ROBINSON FT	X				X WHITE III 3PTR - 17:51
		2-3 1	17:34 - LOVE JUMPER	X	
		1 WHITE III FT - 18:04			16-37 21
		2-4 2			1 WEBSTER FT - 17:19
17:49 - ROBINSON JUMPER	X	1 WHITE III FT - 18:04			16-38 22
			17:07 - ROBINSON 3PTR	3	19-38 19
		X SHIELDS LAYUP - 17:42			X
		2-6 4	16:38 - HANDLEY JUMPER	2P 21-38 17	X PARKER 3PTR - 16:44
		2P 2-7 5			21-40 19
17:21 - LOVE JUMPER	X	1 WHITE III FT - 17:40			2P SHIELDS LAYUP - 16:07
		X SHIELDS JUMPER - 17:14	15:43 - PARKER JUMPER	2P 23-40 17	
16:59 - PARKER TURN	TO				23-42 19
		X PARKER 3PTR - 16:41	14:28 - LOVE JUMPER	X	2 SHIELDS JUMPER - 15:26
		TO WEBSTER TURN - 16:36			
16:31 - WALLACE LAYUP	X		14:06 - ROBINSON TURN	TO	
		X PARKER 3PTR - 16:41			23-44 21
		TO WEBSTER TURN - 16:36			2PF WATSON JR. LAYUP - 14:00
		X PARKER 3PTR - 16:41			23-45 22
		2-9 7	14:06 - ROBINSON TURN	TO	1 WATSON JR. FT - 13:55
		2PF WEBSTER LAYUP - 16:26			
		X WEBSTER FT - 16:26	13:35 - TILLMAN LAYUP	X	
16:18 - JACKSON JUMPER	2P 4-9 5		13:31 - TILLMAN TURN	TO	
		X WHITE III 3PTR - 15:59			X MCVEIGH 3PTR - 13:08
		4-11 7	12:23 - ROBINSON FT	X	
15:49 - ROBINSON FT	1	2 SHIELDS JUMPER - 15:55			
		5-11 6	12:23 - ROBINSON FT	1	24-45 21
15:49 - ROBINSON FT	X				24-47 23
		X SHIELDS JUMPER - 15:33			2P WHITE III LAYUP - 12:01
15:07 - JACKSON TURN	TO		11:40 - ROBINSON JUMPER	X	
		X MORROW JR. JUMPER - 14:55			
14:33 - ROBINSON JUMPER	X		11:29 - BAYLESS 3PTR	X	
14:24 - ROBINSON JUMPER	X				TO WHITE III TURN - 11:23
		X MCVEIGH JUMPER - 14:06	10:55 - TEAM TURN	TO	
14:00 - JACKSON LAYUP	X				24-49 25
		TO JACOBSON TURN - 13:56	10:12 - WALLACE LAYUP	2P 26-49 23	2P WHITE III JUMPER - 10:38
13:25 - LOVE 3PTR	X				X MCVEIGH JUMPER - 10:11
		X PARKER JUMPER - 13:11			X WEBSTER 3PTR - 10:06
12:56 - BAYLESS JUMPER	X				26-50 24
		X WATSON JR. JUMPER - 12:41			1 JACOBSON FT - 10:06
12:27 - PARKER JUMPER	X		09:09 - LOVE JUMPER	X	
		X WHITE III 3PTR - 12:10			26-51 25
		X WATSON JR. JUMPER - 12:41			1 JACOBSON FT - 10:05
12:27 - PARKER JUMPER	X				26-52 26
		X WHITE III 3PTR - 12:10			1 MCVEIGH FT - 08:59
		X JACOBSON JUMPER - 11:24	08:30 - LYNCH 3PTR	3	X MCVEIGH FT - 08:59
11:42 - TILLMAN TURN	TO				29-52 23
		X JACOBSON JUMPER - 11:24			29-53 24
					1 MORROW JR. FT - 08:12
					X MORROW JR. FT - 08:12

11:01 - BAYLESS LAYUP	2 ^P	5-13 8	2 ^P	SHIELDS LAYUP - 11:19	07:42 - ROBINSON 3PTR	X		
		7-13 6					X	MCVEIGH 3PTR - 07:35
			X	WHITE III JUMPER - 10:44			X	MORROW JR. FT - 07:34
10:13 - TILLMAN JUMPER	X					29-54 25	1	MORROW JR. FT - 07:34
		7-14 7	1	SHIELDS FT - 09:55	07:22 - JACKSON 3PTR	X		
		7-15 8	1	SHIELDS FT - 09:55	07:17 - LOVE FT	1	30-54 24	
09:34 - HANDLEY JUMPER	2 ^P	9-15 6			07:17 - LOVE FT	X		
			X	PARKER FT - 09:19				TO MORROW JR. TURN - 07:02
09:03 - CUNNINGHAM JUMPER	2	11-15 4			06:52 - JACKSON FT	1	31-54 23	
			X	SHIELDS FT - 08:51	06:52 - JACKSON FT	X		
08:32 - LYNCH 3PTR	X							TO JACOBSON TURN - 06:50
			X	PARKER LAYUP - 08:10	06:33 - CUNNINGHAM JUMPER	X		
08:03 - HANDLEY JUMPER	2	13-15 2					X	WATSON JR. JUMPER - 06:01
		13-17 4	2 ^P	HAMMOND JUMPER - 07:46	05:54 - ROBINSON LAYUP	2 ^{PF}	33-54 21	
07:29 - WHITING JUMPER	X						X	EVELYN 3PTR - 05:20
			X	HAMMOND JUMPER - 07:18			33-55 22	1
		13-18 5	1	FULLER FT - 07:14			33-56 23	1
		13-19 6	1	FULLER FT - 07:14	05:06 - LOVE FT	1	34-56 22	
06:57 - LOVE LAYUP	X				05:06 - LOVE FT	1	35-56 21	
			X	MCVEIGH 3PTR - 06:50				X
06:18 - LYNCH 3PTR	X							EVELYN 3PTR - 04:53
			X	SHIELDS 3PTR - 06:10			35-58 23	2 ^P
			X	MORROW JR. JUMPER - 06:05	04:21 - JACKSON JUMPER	X		
05:35 - ROBINSON 3PTR	X							TO BORCHARDT TURN - 04:05
05:17 - CUNNINGHAM LAYUP	X				03:50 - JACKSON 3PTR	3	38-58 20	
				TO MORROW JR. TURN - 05:11			38-59 21	1
04:49 - CUNNINGHAM FT	X							X
		13-22 9	3	WHITE III 3PTR - 04:28	03:04 - WHITING TURN			TO
04:11 - ROBINSON FT	1	14-22 8					38-61 23	2
04:11 - ROBINSON FT	1	15-22 7			02:37 - LOVE JUMPER	X		JACOBSON JUMPER - 02:56
		15-23 8	1	SHIELDS FT - 03:54			38-62 24	1
			X	SHIELDS FT - 03:54			38-63 25	1
			X	MCVEIGH 3PTR - 03:51	02:04 - WALLACE 3PTR	X		JACOBSON FT - 02:26
			X	HAMMOND JUMPER - 03:46	02:00 - JACKSON JUMPER	2 ^P	40-63 23	
		15-24 9	1	WHITE III FT - 03:37			40-65 25	2 ^P
		15-25 10	1	WHITE III FT - 03:37				EVELYN LAYUP - 01:34
03:21 - JACKSON TURN	TO				01:07 - JACKSON 3PTR	X		
				TO WHITE III TURN - 03:19	01:00 - LOVE JUMPER	2	42-65 23	
03:17 - JOHNSON JUMPER	X							X
				TO MCVEIGH TURN - 03:07			42-67 25	2
02:48 - LOVE 3PTR	X				00:16 - ROBINSON FT	1	43-67 24	
		15-27 12	2 ^{PF}	WHITE III LAYUP - 02:41	00:16 - ROBINSON FT	1	44-67 23	
			X	WHITE III FT - 02:41				
02:18 - ROBINSON JUMPER	X							
		15-29 14	2 ^P	HAMMOND JUMPER - 01:57				
01:44 - PARKER TURN	TO							
		15-31 16	2 ^{PF}	SHIELDS DUNK - 01:38				
01:16 - PARKER FT	1	16-31 15						
01:16 - PARKER FT	X							
		16-34						

00:15 - ROBINSON FT

00:15 - ROBINSON FT

18 3

WATSON JR. 3PTR - 00:49

X

X

X

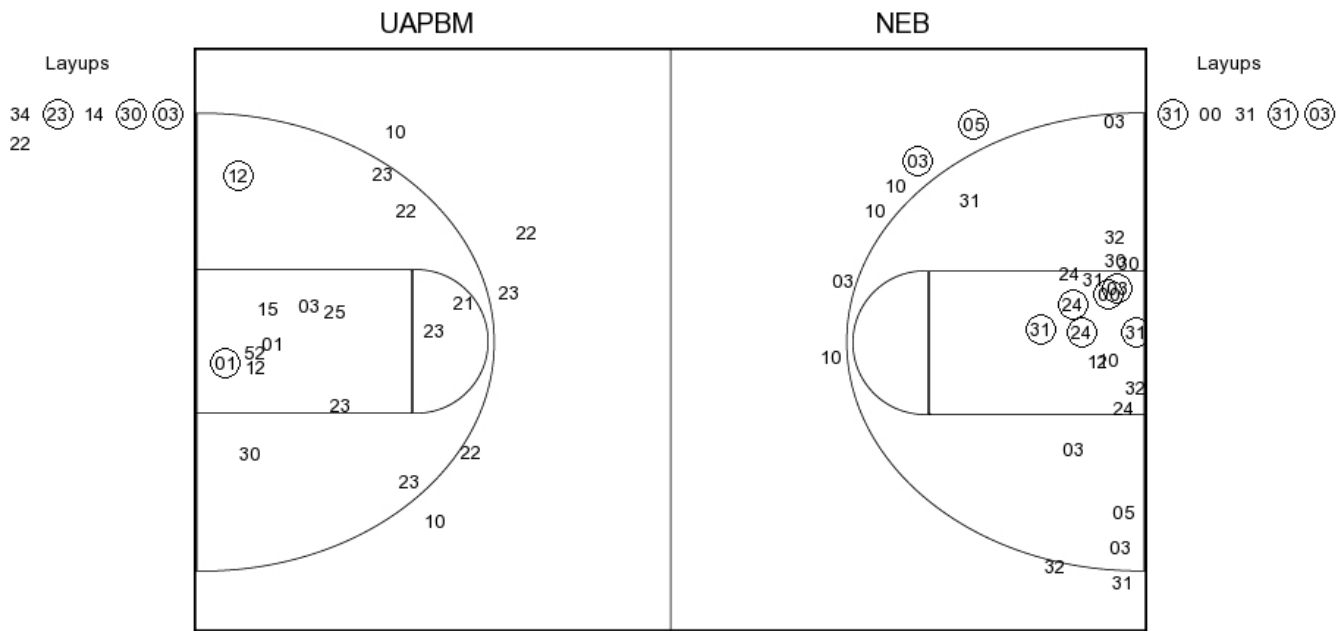
MCVEIGH 3PTR - 00:00

Arkansas-Pine Bluff vs Nebraska

OFFICIAL SHOT CHART

11/24/2015 at Pinnacle Bank Arena (Lincoln, Neb.)

PERIOD 1



UAPBM PERIOD 1

FG Made	6
FG Attempted	26
3PFG Made	0
3PFG Attempted	5

NEB PERIOD 1

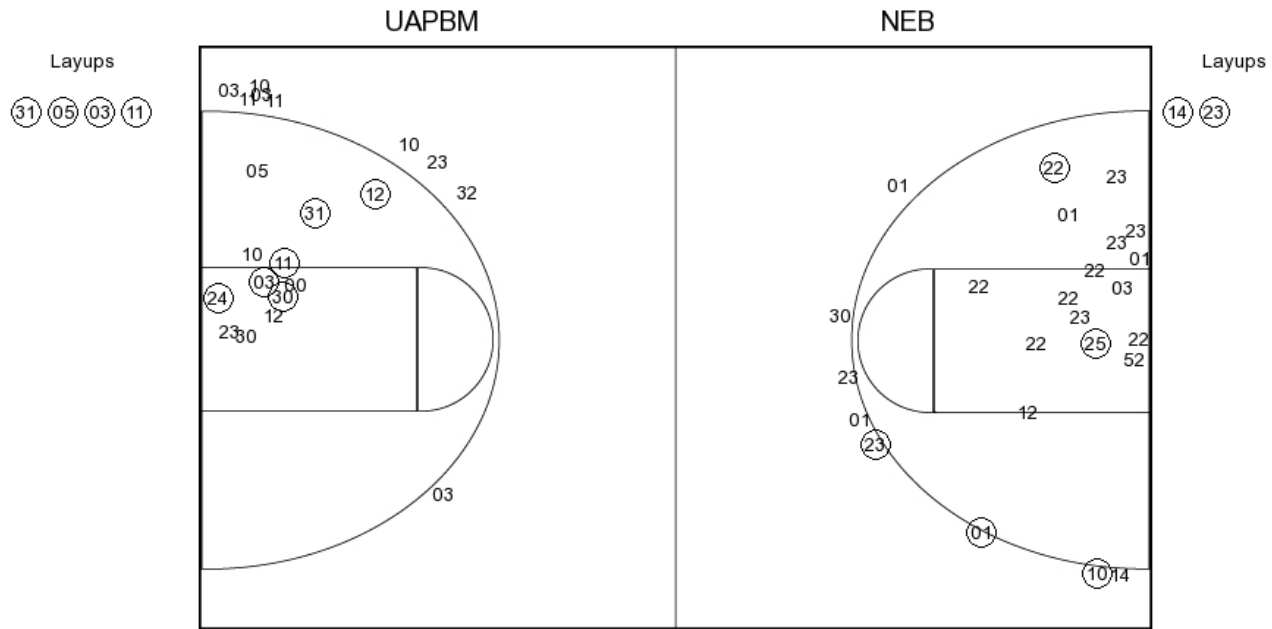
FG Made	11
FG Attempted	34
3PFG Made	2
3PFG Attempted	10

Arkansas-Pine Bluff vs Nebraska

OFFICIAL SHOT CHART

11/24/2015 at Pinnacle Bank Arena (Lincoln, Neb.)

PERIOD 2



UAPBM PERIOD 2

FG Made	9
FG Attempted	23
3PFG Made	3
3PFG Attempted	8

NEB PERIOD 2

FG Made	10
FG Attempted	21
3PFG Made	0
3PFG Attempted	9

