

# HENDERSON STATE AT HARDING



1/23/2016

Searcy, Ark. (Rhodes-Reaves Field House)

## FINAL STATS

**Henderson St.**

*(7-9, 6-4 GAC)*

**66**

**Harding**

*(9-4, 7-2 GAC)*

**62**

*Start Time: 5:30 p.m.*

*Officials: Mike Lewis, Montrel Simmons and Keith Wells*

*Attendance: 0*

**Official Basketball Box Score -- Game Totals -- Final Statistics**  
**Henderson St. vs Harding**  
**1/23/2016 5:30 p.m. at Searcy, Ark. (Rhodes-Reaves Field House)**

**Henderson St. 66 - 7-9, 6-4 GAC**

##	Player	S	Total			Rebounds			PF	TP	A	TO	Blk	Stl	Min
			FG-FGA	3PT	FG-FGA	FT-FTA	Off Reb	Def Reb							
01	STEWART,VICTORIA	g	5-13	2-5	1-2	1	8	9	0	13	1	3	0	0	34
10	HENSON,HALEIGH	g	4-12	3-10	3-4	0	0	0	3	14	1	3	0	1	35
11	THOMPSON,TORRIE	g	1-8	1-6	0-0	0	5	5	2	3	4	2	1	1	35
15	KEENER,DULINCIA	f	6-15	0-0	3-3	5	4	9	4	15	0	1	0	0	27
31	BRANUM,BRITTANY	f	1-2	0-1	4-4	1	2	3	1	6	0	1	0	0	20
14	WEBER,LEXIS		2-2	0-0	2-2	1	3	4	1	6	1	1	0	2	16
24	BEDFORD,MOE		0-1	0-0	3-4	0	1	1	2	3	3	3	0	1	17
25	JONES,ALEX		0-0	0-0	0-0	0	0	0	1	0	1	0	0	0	2
32	SIMMONS,MAKYNDRA		3-4	0-0	0-0	2	4	6	3	6	0	0	0	0	13
TEAM						0	1	1	0		0				
TOTALS			22-57	6-22	16-19	10	28	38	17	66	11	14	1	5	199

Deadball Rebounds: 3,1

FG %	1st Half:	8-23	34.8%	2nd Half:	14-34	41.2%	Game:	22-57	38.6%	4th Qtr	6-15	40.0%
	1st Qtr	4-11	36.4%	2nd Qtr	4-12	33.3%	3rd Qtr	8-19	42.1%			
3FG %	1st Half:	4-11	36.4%	2nd Half:	2-11	18.2%	Game:	6-22	27.3%	4th Qtr	1-4	25.0%
	1st Qtr	2-5	40.0%	2nd Qtr	2-6	33.3%	3rd Qtr	1-7	14.3%			
FT %	1st Half:	11-13	84.6%	2nd Half:	5-6	83.3%	Game:	16-19	84.2%	4th Qtr	4-4	100.0%
	1st Qtr	9-11	81.8%	2nd Qtr	2-2	100.0%	3rd Qtr	1-2	50.0%			

**Harding 62 - 9-4, 7-2 GAC**

##	Player	S	Total			Rebounds			PF	TP	A	TO	Blk	Stl	Min
			FG-FGA	3PT	FG-FGA	FT-FTA	Off Reb	Def Reb							
03	MILLER,FALAN	g	2-6	0-2	1-1	3	5	8	2	5	0	0	0	0	34
13	WIEDOWER,KAYLEE	g	2-5	1-4	0-0	0	1	1	2	5	0	1	1	0	23
14	HANEY,A'NDREA	g	5-13	0-2	6-6	1	4	5	4	16	3	3	0	4	37
21	LAYROCK,SYDNEY	f	6-15	1-1	4-6	2	3	5	4	17	0	5	0	0	27
24	WILLIAMS,LUNDON	g	4-15	2-7	0-2	3	2	5	1	10	4	3	1	2	40
04	MCNAMARA,MACKENZIE		2-6	0-1	3-4	1	4	5	4	7	1	2	0	0	20
23	HEIDEBRECHT,CHELSE/		0-2	0-2	0-0	1	0	1	3	0	0	1	0	0	9
31	CHRANE,SYDNEY		1-2	0-0	0-1	2	3	5	1	2	0	0	0	1	10
TEAM						2	3	5	0		0				
TOTALS			22-64	4-19	14-20	15	25	40	21	62	8	15	2	7	200

Deadball Rebounds: 4,0

FG %	1st Half:	9-33	27.3%	2nd Half:	13-31	41.9%	Game:	22-64	34.4%	4th Qtr	6-18	33.3%
	1st Qtr	6-17	35.3%	2nd Qtr	3-16	18.8%	3rd Qtr	7-13	53.8%			
3FG %	1st Half:	3-12	25.0%	2nd Half:	1-7	14.3%	Game:	4-19	21.1%	4th Qtr	0-3	00.0%
	1st Qtr	2-6	33.3%	2nd Qtr	1-6	16.7%	3rd Qtr	1-4	25.0%			
FT %	1st Half:	7-12	58.3%	2nd Half:	7-8	87.5%	Game:	14-20	70.0%	4th Qtr	4-4	100.0%
	1st Qtr	4-5	80.0%	2nd Qtr	3-7	42.9%	3rd Qtr	3-4	75.0%			

Officials: Mike Lewis, Montrel Simmons and Keith Wells  
 Technical Fouls: Henderson St.- None. Harding- None.  
 Attendance: 0

Score by periods	1st	2nd	3rd	4th	Total
Henderson St.	19	12	18	17	66
Harding	18	10	18	16	62

Points	In Paint	Off T/O	2nd Chance	Fast Break	Bench
HSU	32	19	4	4	15
HU	34	10	4	4	9

Last FG - HSU 4th-00:50, HU 4th-02:20.  
 Largest lead - Henderson St. by 8 4th-03:37; Harding by 7 1st-05:50  
 HSU led for 24:49. HU led for 11:51. Game was tied for 3:00.

Score tied - 5 times  
 Lead changed - 9 times

**Official Basketball Box Score -- Game Totals -- First Half Statistics**  
**Henderson St. vs Harding**  
**1/23/2016 5:30 p.m. at Searcy, Ark. (Rhodes-Reaves Field House)**

**Henderson St., 31, 7-9, 6-4 GAC**

##	Player	S	Total			Rebounds			PF	TP	A	TO	Blk	Stl	Min
			FG-FGA	3PT FG-FGA	FT-FTA	Off Reb	Def Reb	Tot Reb							
01	STEWART, VICTORIA	g	1-6	1-3	1-2	0	3	3	0	4	0	3	0	0	17
10	HENSON, HALEIGH	g	2-6	2-5	1-2	0	0	0	2	7	0	2	0	0	18
11	THOMPSON, TORRIE	g	1-3	1-3	0-0	0	2	2	1	3	1	0	1	1	17
15	KEENER, DULINCIA	f	2-5	0-0	3-3	1	2	3	2	7	0	0	0	0	11
31	BRANUM, BRITTANY	f	0-0	0-0	4-4	0	2	2	1	4	0	0	0	0	10
14	WEBER, LEXIS		1-1	0-0	2-2	0	1	1	0	4	0	0	0	1	6
24	BEDFORD, MOE		0-0	0-0	0-0	0	0	0	2	0	3	2	0	0	10
25	JONES, ALEX		0-0	0-0	0-0	0	0	0	1	0	1	0	0	0	2
32	SIMMONS, MAKYNDRA		1-2	0-0	0-0	2	4	6	1	2	0	0	0	0	9
TEAM						0	1	1	0		0				
Totals			8-23	4-11	11-13	3	15	18	10	31	5	7	1	2	100

FG %	1st Qtr	4-11	36.4%	2nd Qtr	4-12	33.3%	Half:	8-23	34.8%
3FG %	1st Qtr	2-5	40.0%	2nd Qtr	2-6	33.3%	Half:	4-11	36.4%
FT %	1st Qtr	9-11	81.8%	2nd Qtr	2-2	100.0%	Half:	11-13	84.6%

**Harding, 28, 9-4, 7-2 GAC**

##	Player	S	Total			Rebounds			PF	TP	A	TO	Blk	Stl	Min
			FG-FGA	3PT FG-FGA	FT-FTA	Off Reb	Def Reb	Tot Reb							
03	MILLER, FALAN	g	1-4	0-1	1-1	2	2	4	1	3	0	0	0	0	16
13	WIEDOWER, KAYLEE	g	2-4	1-3	0-0	0	0	0	1	5	0	1	1	0	14
14	HANEY, A'NDREA	g	3-7	0-1	4-4	1	3	4	1	10	3	2	0	2	18
21	LAYROCK, SYDNEY	f	0-3	0-0	1-2	0	1	1	2	1	0	2	0	0	8
24	WILLIAMS, LUNDON	g	2-9	2-5	0-2	2	0	2	0	6	2	1	0	1	20
04	MCNAMARA, MACKENZIE		0-3	0-1	1-2	1	3	4	2	1	0	0	0	0	10
23	HEIDEBRECHT, CHELSEA		0-1	0-1	0-0	1	0	1	2	0	0	1	0	0	6
31	CHRANE, SYDNEY		1-2	0-0	0-1	2	3	5	1	2	0	0	0	1	8
TEAM						2	0	2	0		0				
Totals			9-33	3-12	7-12	11	12	23	10	28	5	7	1	4	100

FG %	1st Qtr	6-17	35.3%	2nd Qtr	3-16	18.8%	Half:	9-33	27.3%
3FG %	1st Qtr	2-6	33.3%	2nd Qtr	1-6	16.7%	Half:	3-12	25.0%
FT %	1st Qtr	4-5	80.0%	2nd Qtr	3-7	42.9%	Half:	7-12	58.3%

Officials: Mike Lewis, Montrel Simmons and Keith Wells  
 Technical Fouls: Henderson St.- None, Harding- None.

Score by periods	1st	2nd	3rd	4th	Total
Henderson St.	19	12	18	17	66
Harding	18	10	18	16	62

Points	In Paint	Off T/O	2nd 2nd Chance	Fast Fast Break	Bench
HSU	8	11	4	2	6
	12	4	10	2	3

Last FG - HSU 2nd-00:52, HU 2nd-00:38.  
 HSU led for 6:39. HU led for 10:24. Game was tied for 2:37.

Score tied - 4 times  
 Lead changed - 3 times

**Henderson St. vs Harding**  
**1/23/2016; 5:30 p.m. at Searcy, Ark. (Rhodes-Reaves Field House)**  
**Period 1 Play-By-Play**

VISITORS: Henderson St.	Time	Score	Margin	HOME: Harding
MISSED 3PTR by STEWART,VICTORIA	09:41			
	09:41			REBOUND (DEF) by LAYROCK,SYDNEY
	09:22			MISSED LAYUP by LAYROCK,SYDNEY
REBOUND (DEF) by KEENER,DULINCIA	09:22			
MISSED LAYUP by HENSON,HALEIGH	09:08			
	09:08			REBOUND (DEF) by HANEY,A'NDREA
FOUL by BRANUM,BRITTANY	09:06			
	08:55	3-0	H 3	GOOD! 3PTR by WIEDOWER,KAYLEE
	08:55			ASSIST by HANEY,A'NDREA
MISSED LAYUP by KEENER,DULINCIA	08:41			
	08:41			BLOCK by WIEDOWER,KAYLEE
	08:39			REBOUND (DEF) by HANEY,A'NDREA
	08:33	5-0	H 5	GOOD! LAYUP by HANEY,A'NDREA [FB/PNT]
	08:17			FOUL by MILLER,FALAN
	08:01			FOUL by HANEY,A'NDREA
GOOD! FT by KEENER,DULINCIA	08:01	5-1	H 4	
GOOD! FT by KEENER,DULINCIA	08:01	5-2	H 3	
	07:37			TURNOVER by LAYROCK,SYDNEY
MISSED LAYUP by KEENER,DULINCIA	07:09			
REBOUND (OFF) by KEENER,DULINCIA	07:09			
	07:02			FOUL by LAYROCK,SYDNEY
GOOD! FT by BRANUM,BRITTANY	07:02	5-3	H 2	
GOOD! FT by BRANUM,BRITTANY	07:02	5-4	H 1	
SUB IN: BEDFORD,MOE	07:02			
SUB OUT: BRANUM,BRITTANY	07:02			
	07:02			SUB IN: MCNAMARA,MACKENZIE
	07:02			SUB OUT: WIEDOWER,KAYLEE
	06:44	7-4	H 3	GOOD! LAYUP by MILLER,FALAN [PNT]
	06:44			ASSIST by WILLIAMS,LUNDON
FOUL by HENSON,HALEIGH	06:44			
	06:44	8-4	H 4	GOOD! FT by MILLER,FALAN
MISSED 3PTR by HENSON,HALEIGH	06:39			
	06:39			REBOUND (DEF) by HANEY,A'NDREA
	06:25			TURNOVER by WILLIAMS,LUNDON
MISSED LAYUP by KEENER,DULINCIA	06:14			
	06:14			REBOUND (DEF) by MCNAMARA,MACKENZIE
	05:55			MISSED JUMPER by LAYROCK,SYDNEY
	05:55			REBOUND (OFF) by MCNAMARA,MACKENZIE
	05:50	11-4	H 7	GOOD! 3PTR by WILLIAMS,LUNDON
	05:50			ASSIST by HANEY,A'NDREA
TURNOVER by HENSON,HALEIGH	05:41			
	05:20			MISSED LAYUP by MILLER,FALAN
REBOUND (DEF) by KEENER,DULINCIA	05:20			
MISSED 3PTR by THOMPSON,TORRIE	05:12			
	05:12			REBOUND (DEF) by MILLER,FALAN
	04:55			TURNOVER by LAYROCK,SYDNEY
TIMEOUT MEDIA	04:55			
SUB IN: BRANUM,BRITTANY	04:55			
SUB OUT: THOMPSON,TORRIE	04:55			
	04:55			SUB IN: WIEDOWER,KAYLEE
	04:55			SUB OUT: LAYROCK,SYDNEY
GOOD! LAYUP by KEENER,DULINCIA [PNT]	04:40	11-6	H 5	
ASSIST by BEDFORD,MOE	04:40			

VISITORS: Henderson St.	Time	Score	Margin	HOME: Harding
	04:26			MISSED LAYUP by WILLIAMS,LUNDON
	04:26			REBOUND (OFF) by MILLER,FALAN
	04:22			MISSED JUMPER by HANEY,A'NDREA
	04:22			REBOUND (OFF) by TEAM
	04:19			MISSED 3PTR by WILLIAMS,LUNDON
REBOUND (DEF) by STEWART,VICTORIA	04:19			
TURNOVER by STEWART,VICTORIA	04:05			
	04:05			STEAL by WILLIAMS,LUNDON
	04:05			SUB IN: LAYROCK,SYDNEY
	04:05			SUB OUT: HANEY,A'NDREA
	03:50	13-6	H 7	GOOD! LAYUP by WIEDOWER,KAYLEE [PNT]
	03:50			ASSIST by WILLIAMS,LUNDON
TURNOVER by BEDFORD,MOE	03:41			
	03:15			MISSED 3PTR by MILLER,FALAN
REBOUND (DEF) by TEAM	03:15			
SUB IN: THOMPSON,TORRIE	03:13			
SUB OUT: STEWART,VICTORIA	03:13			
GOOD! 3PTR by HENSON,HALEIGH	03:04	13-9	H 4	
ASSIST by THOMPSON,TORRIE	03:04			
	02:33			MISSED 3PTR by WIEDOWER,KAYLEE
REBOUND (DEF) by THOMPSON,TORRIE	02:33			
GOOD! LAYUP by KEENER,DULINCIA [PNT]	02:21	13-11	H 2	
	02:21			FOUL by MCNAMARA,MACKENZIE
GOOD! FT by KEENER,DULINCIA	02:21	13-12	H 1	
	02:21			SUB IN: HANEY,A'NDREA
	02:21			SUB IN: HEIDEBRECHT,CHELSEA
	02:21			SUB OUT: MILLER,FALAN
	02:21			SUB OUT: MCNAMARA,MACKENZIE
	02:10			MISSED 3PTR by HEIDEBRECHT,CHELSEA
	02:10			REBOUND (OFF) by HANEY,A'NDREA
	02:02	15-12	H 3	GOOD! LAYUP by HANEY,A'NDREA [PNT]
GOOD! 3PTR by THOMPSON,TORRIE	01:51	15-15	T	
ASSIST by BEDFORD,MOE	01:51			
FOUL by KEENER,DULINCIA	01:32			
	01:32	16-15	H 1	GOOD! FT by LAYROCK,SYDNEY
	01:32			MISSED FT by LAYROCK,SYDNEY
REBOUND (DEF) by BRANUM,BRITTANY	01:32			
SUB IN: STEWART,VICTORIA	01:32			
SUB IN: SIMMONS,MAKYNDRA	01:32			
SUB OUT: KEENER,DULINCIA	01:32			
SUB OUT: BEDFORD,MOE	01:32			
	01:32			SUB IN: MILLER,FALAN
	01:32			SUB OUT: WILLIAMS,LUNDON
	01:26			FOUL by HEIDEBRECHT,CHELSEA
MISSED FT by HENSON,HALEIGH	01:26			
REBOUND (DEADB) by TEAM	01:26			
GOOD! FT by HENSON,HALEIGH	01:26	16-16	T	
	01:10			MISSED LAYUP by LAYROCK,SYDNEY
REBOUND (DEF) by STEWART,VICTORIA	01:10			
	01:08			FOUL by LAYROCK,SYDNEY
MISSED FT by STEWART,VICTORIA	01:08			
REBOUND (DEADB) by TEAM	01:08			
GOOD! FT by STEWART,VICTORIA	01:08	16-17	V 1	
SUB IN: KEENER,DULINCIA	01:08			
SUB OUT: SIMMONS,MAKYNDRA	01:08			
	01:08			SUB IN: WILLIAMS,LUNDON
	01:08			SUB IN: MCNAMARA,MACKENZIE
	01:08			SUB OUT: LAYROCK,SYDNEY

VISITORS: Henderson St.	Time	Score	Margin	HOME: Harding
	01:08			SUB OUT: WIEDOWER,KAYLEE
	00:59			TURNOVER by HANEY,A'NDREA
	00:29			FOUL by HEIDEBRECHT,CHELSEA
GOOD! FT by BRANUM,BRITTANY	00:29	16-18	V 2	
GOOD! FT by BRANUM,BRITTANY	00:29	16-19	V 3	
SUB IN: BEDFORD,MOE	00:29			
SUB IN: SIMMONS,MAKYNDRA	00:29			
SUB OUT: HENSON,HALEIGH	00:29			
SUB OUT: KEENER,DULINCIA	00:29			
	00:12			MISSED JUMPER by MCNAMARA,MACKENZIE
REBOUND (DEF) by STEWART,VICTORIA	00:12			
TURNOVER by STEWART,VICTORIA	00:07			
	00:06			STEAL by HANEY,A'NDREA
FOUL by BEDFORD,MOE	00:01			
	00:01	17-19	V 2	GOOD! FT by HANEY,A'NDREA
	00:01	18-19	V 1	GOOD! FT by HANEY,A'NDREA

Henderson St. 19, Harding 18

Period 1-only	In Paint	Off T/O	2nd Chance	Fast Break	Bench	****
HSU	4	6	2	0	0	Score tied - 4 times
HU	8	4	5	2	0	Lead changed - 2 times

**Henderson St. vs Harding**  
**1/23/2016; 5:30 p.m. at Searcy, Ark. (Rhodes-Reaves Field House)**  
**Period 2 Play-By-Play**

VISITORS: Henderson St.	Time	Score	Margin	HOME: Harding
	10:00			SUB IN: MCNAMARA,MACKENZIE
	10:00			SUB IN: HEIDEBRECHT,CHELSEA
	10:00			SUB OUT: WIEDOWER,KAYLEE
	10:00			SUB OUT: LAYROCK,SYDNEY
	09:48			MISSED JUMPER by MCNAMARA,MACKENZIE
	09:48			REBOUND (OFF) by HEIDEBRECHT,CHELSEA
	09:45			TURNOVER by HEIDEBRECHT,CHELSEA
STEAL by THOMPSON,TORRIE	09:45			
TURNOVER by STEWART,VICTORIA	09:32			
	09:31			STEAL by HANEY,A'NDREA
	09:17			MISSED 3PTR by WILLIAMS,LUNDON
REBOUND (DEF) by BRANUM,BRITTANY	09:17			
MISSED LAYUP by STEWART,VICTORIA	08:59			
	08:59			REBOUND (DEF) by MCNAMARA,MACKENZIE
	08:36			MISSED LAYUP by HANEY,A'NDREA
BLOCK by THOMPSON,TORRIE	08:36			
	08:36			REBOUND (OFF) by TEAM
SUB IN: BEDFORD,MOE	08:36			
SUB OUT: STEWART,VICTORIA	08:36			
	08:26			MISSED 3PTR by MCNAMARA,MACKENZIE
	08:26			REBOUND (OFF) by WILLIAMS,LUNDON
FOUL by KEENER,DULINCIA	08:11			
	08:11	19-19	T	GOOD! FT by MCNAMARA,MACKENZIE
	08:11			MISSED FT by MCNAMARA,MACKENZIE
REBOUND (DEF) by SIMMONS,MAKYNDRA	08:11			
SUB IN: SIMMONS,MAKYNDRA	08:11			
SUB OUT: KEENER,DULINCIA	08:11			
	08:11			SUB IN: WIEDOWER,KAYLEE
	08:11			SUB OUT: MILLER,FALAN
MISSED 3PTR by HENSON,HALEIGH	08:01			
	08:01			REBOUND (DEF) by MCNAMARA,MACKENZIE
FOUL by THOMPSON,TORRIE	07:34			
	07:34	20-19	H 1	GOOD! FT by HANEY,A'NDREA
	07:34	21-19	H 2	GOOD! FT by HANEY,A'NDREA
SUB IN: STEWART,VICTORIA	07:34			
SUB OUT: BRANUM,BRITTANY	07:34			
	07:34			SUB IN: CHRANE,SYDNEY
	07:34			SUB OUT: MCNAMARA,MACKENZIE
TURNOVER by BEDFORD,MOE	07:17			
	07:14			STEAL by CHRANE,SYDNEY
	06:57			MISSED LAYUP by CHRANE,SYDNEY
REBOUND (DEF) by SIMMONS,MAKYNDRA	06:57			
MISSED 3PTR by THOMPSON,TORRIE	06:37			
REBOUND (OFF) by SIMMONS,MAKYNDRA	06:37			
GOOD! LAYUP by SIMMONS,MAKYNDRA [PNT]	06:27	21-21	T	
ASSIST by BEDFORD,MOE	06:27			
	06:11			MISSED 3PTR by HANEY,A'NDREA
	06:11			REBOUND (OFF) by CHRANE,SYDNEY
	06:09	23-21	H 2	GOOD! LAYUP by CHRANE,SYDNEY [PNT]
FOUL by SIMMONS,MAKYNDRA	06:09			
	06:09			MISSED FT by CHRANE,SYDNEY
	06:09			REBOUND (OFF) by MILLER,FALAN
SUB IN: WEBER,LEXIS	06:09			

VISITORS: Henderson St.	Time	Score	Margin	HOME: Harding
SUB OUT: THOMPSON,TORRIE	06:09			
	06:09			SUB IN: MCNAMARA,MACKENZIE
	06:09			SUB IN: MILLER,FALAN
	06:09			SUB OUT: WIEDOWER,KAYLEE
	06:09			SUB OUT: HEIDEBRECHT,CHELSEA
	05:47	25-21	H 4	GOOD! LAYUP by HANEY,A'NDREA [PNT]
MISSED LAYUP by STEWART,VICTORIA	05:34			
REBOUND (OFF) by SIMMONS,MAKYNDRA	05:34			
MISSED LAYUP by SIMMONS,MAKYNDRA	05:31			
	05:31			REBOUND (DEF) by CHRANE,SYDNEY
	05:28			TIMEOUT TEAM
	05:00			MISSED 3PTR by WILLIAMS,LUNDON
	05:00			REBOUND (OFF) by WILLIAMS,LUNDON
	04:58			MISSED LAYUP by WILLIAMS,LUNDON
REBOUND (DEADB) by TEAM	04:58			
	04:57			FOUL by MCNAMARA,MACKENZIE
	04:57			SUB IN: WIEDOWER,KAYLEE
	04:57			SUB OUT: MCNAMARA,MACKENZIE
	04:43			FOUL by CHRANE,SYDNEY
GOOD! FT by WEBER,LEXIS	04:43	25-22	H 3	
GOOD! FT by WEBER,LEXIS	04:43	25-23	H 2	
FOUL by BEDFORD,MOE	04:23			
SUB IN: THOMPSON,TORRIE	04:23			
SUB OUT: BEDFORD,MOE	04:23			
	04:18			TURNOVER by HANEY,A'NDREA
GOOD! 3PTR by HENSON,HALEIGH	04:02	25-26	V 1	
	03:33			MISSED 3PTR by WIEDOWER,KAYLEE
REBOUND (DEF) by THOMPSON,TORRIE	03:33			
MISSED 3PTR by HENSON,HALEIGH	03:26			
	03:26			REBOUND (DEF) by MILLER,FALAN
	03:22			TIMEOUT 30SEC
	02:53			TURNOVER by WIEDOWER,KAYLEE
STEAL by WEBER,LEXIS	02:52			
GOOD! LAYUP by WEBER,LEXIS [FB/PNT]	02:50	25-28	V 3	
	02:33			MISSED LAYUP by MILLER,FALAN
REBOUND (DEF) by WEBER,LEXIS	02:33			
	02:24			FOUL by WIEDOWER,KAYLEE
FOUL by HENSON,HALEIGH	02:20			
TURNOVER by HENSON,HALEIGH	02:20			
	02:07			MISSED LAYUP by HANEY,A'NDREA
REBOUND (DEF) by SIMMONS,MAKYNDRA	02:07			
TIMEOUT 30SEC	02:05			
SUB IN: JONES,ALEX	02:05			
SUB OUT: HENSON,HALEIGH	02:05			
MISSED 3PTR by STEWART,VICTORIA	01:57			
	01:57			REBOUND (DEF) by CHRANE,SYDNEY
FOUL by JONES,ALEX	01:32			
	01:32			MISSED FT by WILLIAMS,LUNDON
	01:32			REBOUND (DEADB) by TEAM
	01:32			MISSED FT by WILLIAMS,LUNDON
	01:32			REBOUND (OFF) by CHRANE,SYDNEY
	01:14			MISSED JUMPER by WILLIAMS,LUNDON
REBOUND (DEF) by SIMMONS,MAKYNDRA	01:14			
GOOD! 3PTR by STEWART,VICTORIA	00:52	25-31	V 6	
ASSIST by JONES,ALEX	00:52			
	00:38	28-31	V 3	GOOD! 3PTR by WILLIAMS,LUNDON
	00:38			ASSIST by HANEY,A'NDREA
MISSED JUMPER by STEWART,VICTORIA	00:23			



VISITORS: Henderson St.

Time Score Margin

HOME: Harding

00:23 REBOUND (DEF) by CHRANE,SYDNEY

00:03 MISSED JUMPER by WILLIAMS,LONDON

00:03 REBOUND (DEADB) by TEAM

Henderson St. 31, Harding 28

Period 2-only	In Paint	Off T/O	2nd Chance	Fast Break	Bench	****
HSU	4	5	2	2	6	Score tied - 2 times
HU	4	0	5	0	3	Lead changed - 2 times

**Official Basketball Box Score -- Game Totals -- Second Half Statistics**  
**Henderson St. vs Harding**  
**1/23/2016 5:30 p.m. at Searcy, Ark. (Rhodes-Reaves Field House)**

**Henderson St., 35, 7-9, 6-4 GAC**

##	Player	S	Total			Rebounds			PF	TP	A	TO	Blk	Stl	Min
			FG-FGA	3PT FG-FGA	FT-FTA	Off Reb	Def Reb	Tot Reb							
01	STEWART, VICTORIA	g	4-7	1-2	0-0	1	5	6	0	9	1	0	0	0	17
10	HENSON, HALEIGH	g	2-6	1-5	2-2	0	0	0	1	7	1	1	0	1	17
11	THOMPSON, TORRIE	g	0-5	0-3	0-0	0	3	3	1	0	3	2	0	0	18
15	KEENER, DULINCIA	f	4-10	0-0	0-0	4	2	6	2	8	0	1	0	0	16
31	BRANUM, BRITTANY	f	1-2	0-1	0-0	1	0	1	0	2	0	1	0	0	10
14	WEBER, LEXIS		1-1	0-0	0-0	1	2	3	1	2	1	1	0	1	10
24	BEDFORD, MOE		0-1	0-0	3-4	0	1	1	0	3	0	1	0	1	7
25	JONES, ALEX		0-0	0-0	0-0	0	0	0	0	0	0	0	0	0	0
32	SIMMONS, MAKYNDRA		2-2	0-0	0-0	0	0	0	2	4	0	0	0	0	4
TEAM						0	0	0	0		0				
Totals			14-34	2-11	5-6	7	13	20	7	35	6	7	0	3	99

FG %	3rd Qtr	8-19	42.1%	4th Qtr	6-15	40.0%	Half:	14-34	41.2%
3FG %	3rd Qtr	1-7	14.3%	4th Qtr	1-4	25.0%	Half:	2-11	36.4%
FT %	3rd Qtr	1-2	50.0%	4th Qtr	4-4	100.0%	Half:	5-6	83.3%

**Harding, 34, 9-4, 7-2 GAC**

##	Player	S	Total			Rebounds			PF	TP	A	TO	Blk	Stl	Min
			FG-FGA	3PT FG-FGA	FT-FTA	Off Reb	Def Reb	Tot Reb							
03	MILLER, FALAN	g	1-2	0-1	0-0	1	3	4	1	2	0	0	0	0	18
13	WIEDOWER, KAYLEE	g	0-1	0-1	0-0	0	1	1	1	0	0	0	0	0	9
14	HANEY, A'NDREA	g	2-6	0-1	2-2	0	1	1	3	6	0	1	0	2	19
21	LAYROCK, SYDNEY	f	6-12	1-1	3-4	2	2	4	2	16	0	3	0	0	19
24	WILLIAMS, LUNDON	g	2-6	0-2	0-0	1	2	3	1	4	2	2	1	1	20
04	MCNAMARA, MACKENZIE		2-3	0-0	2-2	0	1	1	2	6	1	2	0	0	10
23	HEIDEBRECHT, CHELSEA		0-1	0-1	0-0	0	0	0	1	0	0	0	0	0	3
31	CHRANE, SYDNEY		0-0	0-0	0-0	0	0	0	0	0	0	0	0	0	2
TEAM						0	3	3	0		0				
Totals			13-31	1-7	7-8	4	13	17	11	34	3	8	1	3	100

FG %	3rd Qtr	7-13	53.8%	4th Qtr	6-18	33.3%	Half:	13-31	41.9%
3FG %	3rd Qtr	1-4	25.0%	4th Qtr	0-3	00.0%	Half:	1-7	25.0%
FT %	3rd Qtr	3-4	75.0%	4th Qtr	4-4	100.0%	Half:	7-8	87.5%

Officials: Mike Lewis, Montrel Simmons and Keith Wells  
 Technical Fouls: Henderson St.- None, Harding- None.

Score by periods	1st	2nd	3rd	4th	Total
Henderson St.	19	12	18	17	66
Harding	18	10	18	16	62

Points	In Paint	Off T/O	2nd 2nd Chance	Fast Fast Break	Bench
HSU	24	8	0	2	9
	22	6	6	2	6

Last FG - HSU 4th-00:50, HU 4th-02:20.  
 HSU led for 18:10. HU led for 1:27. Game was tied for 0:23.

Score tied - 1 times  
 Lead changed - 6 times

**Henderson St. vs Harding**  
**1/23/2016; 5:30 p.m. at Searcy, Ark. (Rhodes-Reaves Field House)**  
**Period 3 Play-By-Play**

VISITORS: Henderson St.	Time	Score	Margin	HOME: Harding
MISSED 3PTR by HENSON,HALEIGH	09:43			
	09:43			REBOUND (DEF) by TEAM
	09:13	30-31	V 1	GOOD! LAYUP by HANEY,A'NDREA [PNT]
MISSED LAYUP by KEENER,DULINCIA	08:58			
	08:58			REBOUND (DEF) by LAYROCK,SYDNEY
	08:42	32-31	H 1	GOOD! JUMPER by LAYROCK,SYDNEY
	08:42			ASSIST by WILLIAMS,LUNDON
GOOD! LAYUP by KEENER,DULINCIA [PNT]	08:24	32-33	V 1	
ASSIST by HENSON,HALEIGH	08:24			
	07:56			MISSED LAYUP by LAYROCK,SYDNEY
REBOUND (DEF) by KEENER,DULINCIA	07:56			
GOOD! LAYUP by BRANUM,BRITTANY [PNT]	07:39	32-35	V 3	
	07:24			TURNOVER by WILLIAMS,LUNDON
	07:24			SUB IN: MCNAMARA,MACKENZIE
	07:24			SUB OUT: WIEDOWER,KAYLEE
	07:14			FOUL by MILLER,FALAN
MISSED 3PTR by BRANUM,BRITTANY	07:08			
REBOUND (OFF) by KEENER,DULINCIA	07:08			
	07:06			FOUL by HANEY,A'NDREA
MISSED 3PTR by HENSON,HALEIGH	07:03			
	07:03			REBOUND (DEF) by MILLER,FALAN
	06:45			TURNOVER by HANEY,A'NDREA
STEAL by HENSON,HALEIGH	06:44			
MISSED 3PTR by THOMPSON,TORRIE	06:37			
REBOUND (OFF) by BRANUM,BRITTANY	06:37			
TURNOVER by BRANUM,BRITTANY	06:31			
	06:29			STEAL by WILLIAMS,LUNDON
	06:19			MISSED 3PTR by MILLER,FALAN
REBOUND (DEF) by THOMPSON,TORRIE	06:19			
GOOD! LAYUP by STEWART,VICTORIA [FB/PNT]	06:10	32-37	V 5	
	05:45	35-37	V 2	GOOD! 3PTR by LAYROCK,SYDNEY
	05:45			ASSIST by MCNAMARA,MACKENZIE
GOOD! 3PTR by HENSON,HALEIGH	05:29	35-40	V 5	
ASSIST by THOMPSON,TORRIE	05:29			
	05:11	37-40	V 3	GOOD! LAYUP by WILLIAMS,LUNDON [PNT]
MISSED LAYUP by KEENER,DULINCIA	04:54			
	04:54			REBOUND (DEF) by LAYROCK,SYDNEY
	04:45			MISSED 3PTR by WILLIAMS,LUNDON
REBOUND (DEF) by STEWART,VICTORIA	04:45			
TIMEOUT MEDIA	04:25			
SUB IN: BEDFORD,MOE	04:25			
SUB IN: WEBER,LEXIS	04:25			
SUB IN: SIMMONS,MAKYNDRA	04:25			
SUB OUT: STEWART,VICTORIA	04:25			
SUB OUT: KEENER,DULINCIA	04:25			
SUB OUT: BRANUM,BRITTANY	04:25			
TURNOVER by WEBER,LEXIS	04:18			
	04:06			TURNOVER by MCNAMARA,MACKENZIE
STEAL by BEDFORD,MOE	04:04			
	04:00			FOUL by HANEY,A'NDREA
SUB IN: KEENER,DULINCIA	04:00			
SUB OUT: SIMMONS,MAKYNDRA	04:00			
	04:00			SUB IN: HEIDEBRECHT,CHELSEA

VISITORS: Henderson St.	Time	Score	Margin	HOME: Harding
	04:00			SUB OUT: HANEY,A'NDREA
MISSED LAYUP by KEENER,DULINCIA	03:58			
	03:58			BLOCK by WILLIAMS,LUNDON
	03:57			REBOUND (DEF) by MILLER,FALAN
	03:46	39-40	V 1	GOOD! LAYUP by MCNAMARA,MACKENZIE [PNT]
FOUL by WEBER,LEXIS	03:46			
	03:46			ASSIST by WILLIAMS,LUNDON
	03:46	40-40	T	GOOD! FT by MCNAMARA,MACKENZIE
MISSED LAYUP by THOMPSON,TORRIE	03:36			
REBOUND (OFF) by KEENER,DULINCIA	03:36			
MISSED LAYUP by KEENER,DULINCIA	03:33			
	03:33			REBOUND (DEF) by MILLER,FALAN
FOUL by HENSON,HALEIGH	03:23			
	03:23			MISSED FT by LAYROCK,SYDNEY
	03:23			REBOUND (DEADB) by TEAM
	03:23	41-40	H 1	GOOD! FT by LAYROCK,SYDNEY
SUB IN: STEWART,VICTORIA	03:23			
SUB IN: SIMMONS,MAKYNDRA	03:23			
SUB OUT: HENSON,HALEIGH	03:23			
SUB OUT: KEENER,DULINCIA	03:23			
GOOD! LAYUP by WEBER,LEXIS [PNT]	03:07	41-42	V 1	
	02:52			MISSED LAYUP by MCNAMARA,MACKENZIE
REBOUND (DEF) by WEBER,LEXIS	02:52			
MISSED 3PTR by THOMPSON,TORRIE	02:39			
REBOUND (OFF) by STEWART,VICTORIA	02:39			
TIMEOUT MEDIA	02:35			
TIMEOUT 30SEC	02:35			
SUB IN: KEENER,DULINCIA	02:35			
SUB OUT: SIMMONS,MAKYNDRA	02:35			
	02:35			SUB IN: HANEY,A'NDREA
	02:35			SUB IN: WIEDOWER,KAYLEE
	02:35			SUB OUT: LAYROCK,SYDNEY
	02:35			SUB OUT: WILLIAMS,LUNDON
MISSED 3PTR by STEWART,VICTORIA	02:32			
REBOUND (OFF) by WEBER,LEXIS	02:32			
FOUL by KEENER,DULINCIA	02:29			
	02:29			FOUL by MCNAMARA,MACKENZIE
SUB IN: SIMMONS,MAKYNDRA	02:29			
SUB OUT: KEENER,DULINCIA	02:29			
	02:14			MISSED 3PTR by HEIDEBRECHT,CHELSEA
	02:14			REBOUND (DEADB) by TEAM
FOUL by SIMMONS,MAKYNDRA	02:12			
	02:08	43-42	H 1	GOOD! LAYUP by MCNAMARA,MACKENZIE [PNT]
FOUL by SIMMONS,MAKYNDRA	02:08			
	02:08	44-42	H 2	GOOD! FT by MCNAMARA,MACKENZIE
	02:08			SUB IN: LAYROCK,SYDNEY
	02:08			SUB IN: WILLIAMS,LUNDON
	02:08			SUB OUT: MILLER,FALAN
	02:08			SUB OUT: HEIDEBRECHT,CHELSEA
	01:56			FOUL by WIEDOWER,KAYLEE
MISSED FT by BEDFORD,MOE	01:56			
REBOUND (DEADB) by TEAM	01:56			
GOOD! FT by BEDFORD,MOE	01:56	44-43	H 1	
	01:27			MISSED LAYUP by WILLIAMS,LUNDON
REBOUND (DEF) by WEBER,LEXIS	01:27			
GOOD! LAYUP by SIMMONS,MAKYNDRA [PNT]	01:15	44-45	V 1	
ASSIST by WEBER,LEXIS	01:15			
	00:56			FOUL by MCNAMARA,MACKENZIE

VISITORS: Henderson St.	Time	Score	Margin	HOME: Harding
	00:56			TURNOVER by MCNAMARA,MACKENZIE
	00:56			SUB IN: MILLER,FALAN
	00:56			SUB OUT: MCNAMARA,MACKENZIE
GOOD! LAYUP by SIMMONS,MAKYNDRA [PNT]	00:41	44-47	V 3	
ASSIST by THOMPSON,TORRIE	00:41			
	00:22	46-47	V 1	GOOD! JUMPER by LAYROCK,SYDNEY [PNT]
GOOD! LAYUP by STEWART,VICTORIA [PNT]	00:03	46-49	V 3	

Henderson St. 66, Harding 62

Period 3-only	In Paint	Off T/O	2nd Chance	Fast Break	Bench	****
HSU	14	2	0	2	7	Score tied - 0 times
HU	10	0	0	0	6	Lead changed - 6 times

**Henderson St. vs Harding**  
**1/23/2016; 5:30 p.m. at Searcy, Ark. (Rhodes-Reaves Field House)**  
**Period 4 Play-By-Play**

VISITORS: Henderson St.	Time	Score	Margin	HOME: Harding
SUB IN: WEBER,LEXIS	10:00			
SUB OUT: BRANUM,BRITTANY	10:00			
GOOD! LAYUP by KEENER,DULINCIA [PNT]	09:36	46-51	V 5	
	09:16			MISSED 3PTR by WIEDOWER,KAYLEE
REBOUND (DEF) by STEWART,VICTORIA	09:16			
MISSED LAYUP by STEWART,VICTORIA	09:07			
	09:07			REBOUND (DEF) by WIEDOWER,KAYLEE
	08:57			TURNOVER by LAYROCK,SYDNEY
STEAL by WEBER,LEXIS	08:56			
GOOD! LAYUP by STEWART,VICTORIA [PNT]	08:50	46-53	V 7	
	08:26	48-53	V 5	GOOD! LAYUP by LAYROCK,SYDNEY [PNT]
MISSED 3PTR by HENSON,HALEIGH	08:13			
	08:13			REBOUND (DEF) by WILLIAMS,LUNDON
	07:45			MISSED 3PTR by WILLIAMS,LUNDON
	07:45			REBOUND (OFF) by MILLER,FALAN
	07:42	50-53	V 3	GOOD! TIPIN by MILLER,FALAN [PNT]
MISSED 3PTR by THOMPSON,TORRIE	07:26			
	07:26			REBOUND (DEF) by HANEY,A'NDREA
	07:15			MISSED 3PTR by HANEY,A'NDREA
REBOUND (DEF) by STEWART,VICTORIA	07:15			
GOOD! LAYUP by HENSON,HALEIGH [PNT]	06:54	50-55	V 5	
	06:32			MISSED JUMPER by LAYROCK,SYDNEY
REBOUND (DEF) by STEWART,VICTORIA	06:32			
SUB IN: BEDFORD,MOE	06:17			
SUB OUT: STEWART,VICTORIA	06:17			
	06:17			SUB IN: HEIDEBRECHT,CHELSEA
	06:17			SUB IN: CHRANE,SYDNEY
	06:17			SUB OUT: WIEDOWER,KAYLEE
	06:17			SUB OUT: LAYROCK,SYDNEY
SUB IN: BRANUM,BRITTANY	06:11			
SUB OUT: WEBER,LEXIS	06:11			
MISSED LAYUP by BEDFORD,MOE	06:03			
REBOUND (OFF) by KEENER,DULINCIA	06:03			
TURNOVER by KEENER,DULINCIA	05:59			
	05:46	52-55	V 3	GOOD! LAYUP by WILLIAMS,LUNDON [PNT]
	05:26			FOUL by HEIDEBRECHT,CHELSEA
GOOD! FT by HENSON,HALEIGH	05:26	52-56	V 4	
GOOD! FT by HENSON,HALEIGH	05:26	52-57	V 5	
	05:26			SUB IN: LAYROCK,SYDNEY
	05:26			SUB OUT: HEIDEBRECHT,CHELSEA
	05:12			MISSED LAYUP by HANEY,A'NDREA
REBOUND (DEF) by THOMPSON,TORRIE	05:12			
GOOD! LAYUP by KEENER,DULINCIA [PNT]	05:00	52-59	V 7	
	04:46			FOUL by LAYROCK,SYDNEY
	04:46			TURNOVER by LAYROCK,SYDNEY
TIMEOUT MEDIA	04:46			
SUB IN: STEWART,VICTORIA	04:46			
SUB OUT: BEDFORD,MOE	04:46			
	04:46			SUB IN: MCNAMARA,MACKENZIE
	04:46			SUB OUT: CHRANE,SYDNEY
MISSED LAYUP by THOMPSON,TORRIE	04:39			
	04:39			REBOUND (DEF) by MCNAMARA,MACKENZIE
	04:28			MISSED JUMPER by HANEY,A'NDREA

VISITORS: Henderson St.	Time	Score	Margin	HOME: Harding
REBOUND (DEF) by KEENER,DULINCIA	04:28			
MISSED 3PTR by HENSON,HALEIGH	04:11			
	04:11			REBOUND (DEF) by TEAM
	03:58			MISSED LAYUP by HANEY,A'NDREA
REBOUND (DEF) by THOMPSON,TORRIE	03:58			
TURNOVER by THOMPSON,TORRIE	03:54			
	03:53			STEAL by HANEY,A'NDREA
	03:51	54-59	V 5	GOOD! LAYUP by HANEY,A'NDREA [FB/PNT]
GOOD! 3PTR by STEWART,VICTORIA	03:37	54-62	V 8	
ASSIST by THOMPSON,TORRIE	03:37			
FOUL by THOMPSON,TORRIE	03:21			
	03:21	55-62	V 7	GOOD! FT by HANEY,A'NDREA
	03:21	56-62	V 6	GOOD! FT by HANEY,A'NDREA
MISSED LAYUP by KEENER,DULINCIA	03:11			
	03:11			REBOUND (DEF) by TEAM
	02:53			MISSED LAYUP by LAYROCK,SYDNEY
	02:53			REBOUND (OFF) by WILLIAMS,LUNDON
	02:46	58-62	V 4	GOOD! LAYUP by LAYROCK,SYDNEY [PNT]
TURNOVER by THOMPSON,TORRIE	02:39			
TIMEOUT TEAM	02:39			
SUB IN: WEBER,LEXIS	02:39			
SUB OUT: BRANUM,BRITTANY	02:39			
	02:23			MISSED LAYUP by LAYROCK,SYDNEY
	02:23			REBOUND (OFF) by LAYROCK,SYDNEY
	02:20	60-62	V 2	GOOD! LAYUP by LAYROCK,SYDNEY [PNT]
TURNOVER by HENSON,HALEIGH	01:55			
SUB IN: BEDFORD,MOE	01:55			
SUB OUT: THOMPSON,TORRIE	01:55			
	01:39			MISSED JUMPER by WILLIAMS,LUNDON
REBOUND (DEF) by STEWART,VICTORIA	01:39			
MISSED LAYUP by STEWART,VICTORIA	01:19			
REBOUND (OFF) by KEENER,DULINCIA	01:19			
MISSED LAYUP by KEENER,DULINCIA	01:16			
	01:16			REBOUND (DEF) by WILLIAMS,LUNDON
	01:05			TURNOVER by WILLIAMS,LUNDON
GOOD! LAYUP by KEENER,DULINCIA [PNT]	00:50	60-64	V 4	
ASSIST by STEWART,VICTORIA	00:50			
FOUL by KEENER,DULINCIA	00:39			
	00:39	61-64	V 3	GOOD! FT by LAYROCK,SYDNEY
	00:39	62-64	V 2	GOOD! FT by LAYROCK,SYDNEY
	00:39			SUB IN: WIEDOWER,KAYLEE
	00:39			SUB OUT: MCNAMARA,MACKENZIE
TURNOVER by BEDFORD,MOE	00:28			
	00:28			STEAL by HANEY,A'NDREA
	00:27			TIMEOUT TEAM
	00:27			SUB IN: MCNAMARA,MACKENZIE
	00:27			SUB OUT: WIEDOWER,KAYLEE
	00:05			FOUL by LAYROCK,SYDNEY
	00:05			TURNOVER by LAYROCK,SYDNEY
TIMEOUT 30SEC	00:05			
	00:05			SUB IN: WIEDOWER,KAYLEE
	00:05			SUB OUT: MCNAMARA,MACKENZIE
	00:04			FOUL by HANEY,A'NDREA
	00:04			SUB IN: HEIDEBRECHT,CHELSEA
	00:04			SUB OUT: HANEY,A'NDREA
	00:03			FOUL by WILLIAMS,LUNDON
GOOD! FT by BEDFORD,MOE	00:03	62-65	V 3	
GOOD! FT by BEDFORD,MOE	00:03	62-66	V 4	

VISITORS: Henderson St.	Time	Score	Margin	HOME: Harding
	00:03			TIMEOUT 30SEC
	00:03			SUB IN: HANEY,A'NDREA
	00:03			SUB OUT: HEIDEBRECHT,CHELSEA
	00:02			MISSED LAYUP by LAYROCK,SYDNEY
	00:02			REBOUND (OFF) by LAYROCK,SYDNEY
	00:01			MISSED LAYUP by LAYROCK,SYDNEY
REBOUND (DEF) by BEDFORD,MOE	00:00			

Henderson St. 66, Harding 62

Period 4-only	In Paint	Off T/O	2nd Chance	Fast Break	Bench	****
HSU	10	6	0	0	2	Score tied - 0 times
HU	12	6	6	2	0	Lead changed - 0 times



# Henderson St. vs Harding

## 1/23/2016; 5:30 p.m. at Searcy, Ark. (Rhodes-Reaves Field House)

### Scoring/Runs Reference

Period 1			Period 2		
Henderson St.	Score	Harding	Henderson St.	Score	Harding
09:41 - STEWART_3PTR	X			X	MCNAMARA_JUMPER - 09:48
					TO HEIDEBRECHT TURN - 09:45
09:08 - HENSON_LAYUP	X	LAYROCK_LAYUP - 09:22	09:32 - STEWART TURN	TO	
	0-3 3	WIEDOWER_3PTR - 08:55		X	WILLIAMS_3PTR - 09:17
08:41 - KEENER_LAYUP	X		08:59 - STEWART_LAYUP	X	
	0-5 5	HANEY_LAYUP - 08:33		X	HANEY_LAYUP - 08:36
08:01 - KEENER_FT	1			X	MCNAMARA_3PTR - 08:26
08:01 - KEENER_FT	1			X	MCNAMARA_FT - 08:11
		TO LAYROCK TURN - 07:37		19-19 0	1
07:09 - KEENER_LAYUP	X			X	MCNAMARA_FT - 08:11
07:02 - BRANUM_FT	1		08:01 - HENSON_3PTR	X	
07:02 - BRANUM_FT	1			19-20 1	1
	3-5 2	MILLER_LAYUP - 06:44		19-21 2	1
	4-5 1	MILLER_FT - 06:44	07:17 - BEDFORD TURN	TO	
	4-7 3			X	CHRANE_LAYUP - 06:57
	4-8 4		06:37 - THOMPSON_3PTR	X	
06:39 - HENSON_3PTR	X			2P	21-21 0
		TO WILLIAMS TURN - 06:25	06:27 - SIMMONS_LAYUP	2P	
06:14 - KEENER_LAYUP	X			X	HANEY_3PTR - 06:11
				21-23 2	2P
		LAYROCK_JUMPER - 05:55		X	CHRANE_FT - 06:09
		WILLIAMS_3PTR - 05:50		21-25 4	2P
05:41 - HENSON TURN	TO		05:34 - STEWART_LAYUP	X	
				X	
		MILLER_LAYUP - 05:20	05:31 - SIMMONS_LAYUP	X	
05:12 - THOMPSON_3PTR	X			X	WILLIAMS_3PTR - 05:00
		TO LAYROCK TURN - 04:55		X	WILLIAMS_LAYUP - 04:58
04:40 - KEENER_LAYUP	2P		04:43 - WEBER_FT	1	22-25 3
	6-11 5	WILLIAMS_LAYUP - 04:26	04:43 - WEBER_FT	1	23-25 2
		HANEY_JUMPER - 04:22		TO	HANEY TURN - 04:18
		WILLIAMS_3PTR - 04:19	04:02 - HENSON_3PTR	3	26-25 -1
04:05 - STEWART TURN	TO			X	WIEDOWER_3PTR - 03:33

03:41,-,BEDFORD TO WIEDOWER\_LAYUP,-  
TURN TO WIEDOWER\_TURN,-  
03:04,-,HENSON\_3PTR 3 9-13 4 X MILLER\_3PTR - 03:15  
02:21,-,KEENER\_LAYUP 2P 11-13 2 X WIEDOWER\_3PTR - 02:33  
02:21,-,KEENER\_FT 1 12-13 1 X HEIDEBRECHT\_3PTR - 02:10  
01:51,-,THOMPSON\_3PTR 3 12-15 3 2P HANEY\_LAYUP,-, 02:02  
01:26 - HENSON\_FT X 15-15 0 1 LAYROCK\_FT,-, 01:32  
01:26,-,HENSON\_FT 1 16-16 0 X LAYROCK\_FT - 01:32  
01:08 - STEWART\_FT X LAYROCK\_LAYUP - 01:10  
01:08,-,STEWART\_FT 1 17-16 -1 TO HANEY\_TURN,-, 00:59  
00:29,-,BRANUM\_FT 1 18-16 -2 X MCNAMARA,JUMPER - 00:12  
00:29,-,BRANUM\_FT 1 19-16 -3  
00:07,-,STEWART\_TURN TO HANEY\_FT,-, 00:01  
19-17 -2 1 HANEY\_FT,-, 00:01  
19-18 -1 1 HANEY\_FT,-, 00:01

03:26 - HENSON\_3PTR X  
02:50,-,WEBER\_LAYUP 2PF 28-25 3 X MILLER\_LAYUP - 02:33  
02:20,-,HENSON\_TURN TO HANEY\_LAYUP - 02:07  
01:57 - STEWART\_3PTR X  
00:52,-,STEWART\_3PTR 3 31-25 -6 X WILLIAMS\_FT - 01:32  
WILLIAMS\_FT - 01:32  
WILLIAMS\_JUMPER - 01:14  
00:23 - STEWART\_JUMPER X 31-28 -3 3 WILLIAMS\_3PTR,-, 00:38  
WILLIAMS\_JUMPER - 00:03

Period 3  
Henderson St. Score Harding  
09:43 - HENSON\_3PTR X  
31-30 -1 2P HANEY\_LAYUP,-, 09:13  
08:58 - KEENER\_LAYUP X  
31-32 1 2 LAYROCK\_JUMPER,-, 08:42  
08:24,-,KEENER\_LAYUP 2P 33-32 -1 X LAYROCK\_LAYUP - 07:56

Period 4  
Henderson St. Score Harding  
09:36,-,KEENER\_LAYUP 2P 51-46 -5 X WIEDOWER\_3PTR - 09:16  
09:07 - STEWART\_LAYUP X TO LAYROCK\_TURN - 08:57  
08:50,-,STEWART\_LAYUP 2P 53-46 -7 LAYROCK\_LAYUP,-, 08:26  
53-48 -5 2P  
08:13 - HENSON\_3PTR X



01:56,- _BEDFORD,FT	<table border="1"><tr><td>1</td><td>43-44 1</td></tr></table>	1	43-44 1	<table border="1"><tr><td>X</td></tr></table>	X	WILLIAMS_LAYUP - 01:27
1	43-44 1					
X						
01:15,- _SIMMONS_LAYUP	<table border="1"><tr><td>2<sup>P</sup></td><td>45-44 -1</td></tr></table>	2 <sup>P</sup>	45-44 -1	TO	MCNAMARA TURN - _00:56	
2 <sup>P</sup>	45-44 -1					
00:41,- _SIMMONS_LAYUP	<table border="1"><tr><td>2<sup>P</sup></td><td>47-44 -3</td></tr></table>	2 <sup>P</sup>	47-44 -3	<table border="1"><tr><td>2<sup>P</sup></td></tr></table>	2 <sup>P</sup>	LAYROCK,JUMPER,- _00:22
2 <sup>P</sup>	47-44 -3					
2 <sup>P</sup>						
00:03,- _STEWART_LAYUP	<table border="1"><tr><td>2<sup>P</sup></td><td>49-46 -3</td></tr></table>	2 <sup>P</sup>	49-46 -3			
2 <sup>P</sup>	49-46 -3					

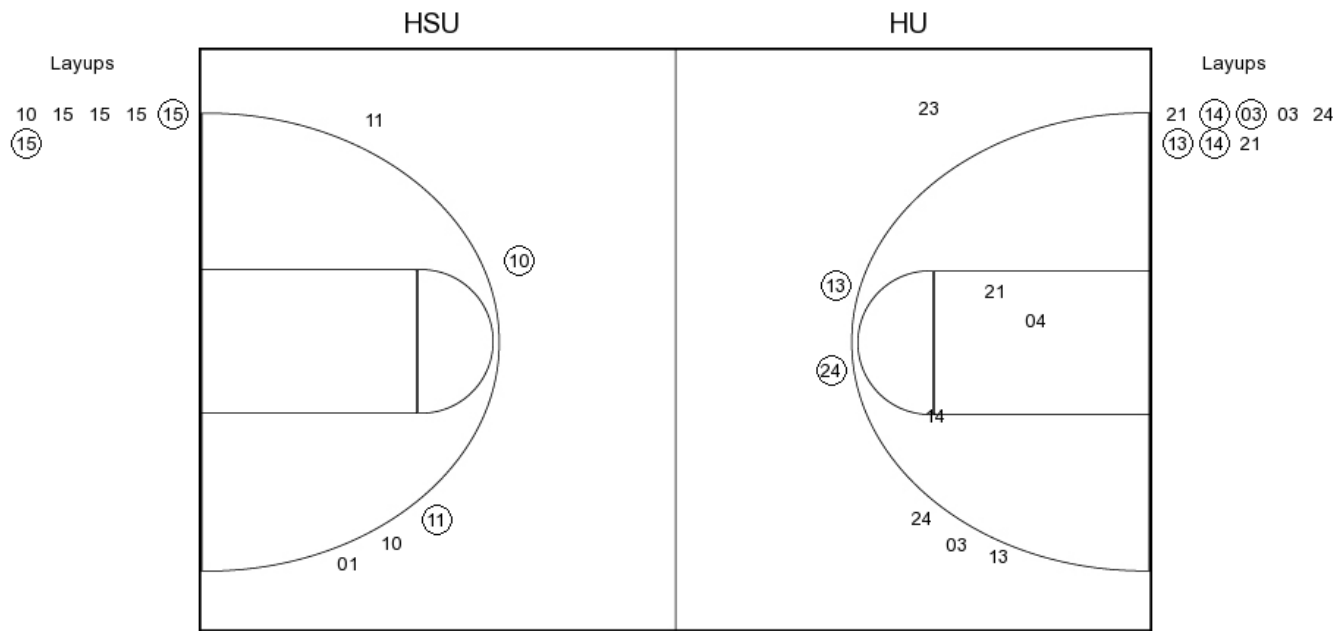
01:19 - STEWART_LAYUP	<table border="1"><tr><td>X</td></tr></table>	X					
X							
01:16 - KEENER,LAYUP	<table border="1"><tr><td>X</td></tr></table>	X	TO	WILLIAMS TURN - _01:05			
X							
00:50,- _KEENER,LAYUP	<table border="1"><tr><td>2<sup>P</sup></td><td>64-60 -4</td></tr></table>	2 <sup>P</sup>	64-60 -4	<table border="1"><tr><td>64-61 -3</td><td>1</td></tr></table>	64-61 -3	1	LAYROCK,FT,- _00:39
2 <sup>P</sup>	64-60 -4						
64-61 -3	1						
	<table border="1"><tr><td>64-62 -2</td><td>1</td></tr></table>	64-62 -2	1		LAYROCK,FT,- _00:39		
64-62 -2	1						
00:28,-_BEDFORD TURN	TO						
	TO		LAYROCK TURN - _00:05				
00:03,-_BEDFORD,FT	<table border="1"><tr><td>1</td><td>65-62 -3</td></tr></table>	1	65-62 -3				
1	65-62 -3						
00:03,-_BEDFORD,FT	<table border="1"><tr><td>1</td><td>66-62 -4</td></tr></table>	1	66-62 -4	<table border="1"><tr><td>X</td></tr></table>	X	LAYROCK_LAYUP - 00:02	
1	66-62 -4						
X							
		<table border="1"><tr><td>X</td></tr></table>	X	LAYROCK_LAYUP - 00:01			
X							

**Henderson St. vs Harding**

**OFFICIAL SHOT CHART**

1/23/2016 at Searcy, Ark. (Rhodes-Reaves Field House)

**PERIOD 1**



**HSU PERIOD 1**

FG Made	8
FG Attempted	23
3PFG Made	4
3PFG Attempted	11

**HU PERIOD 1**

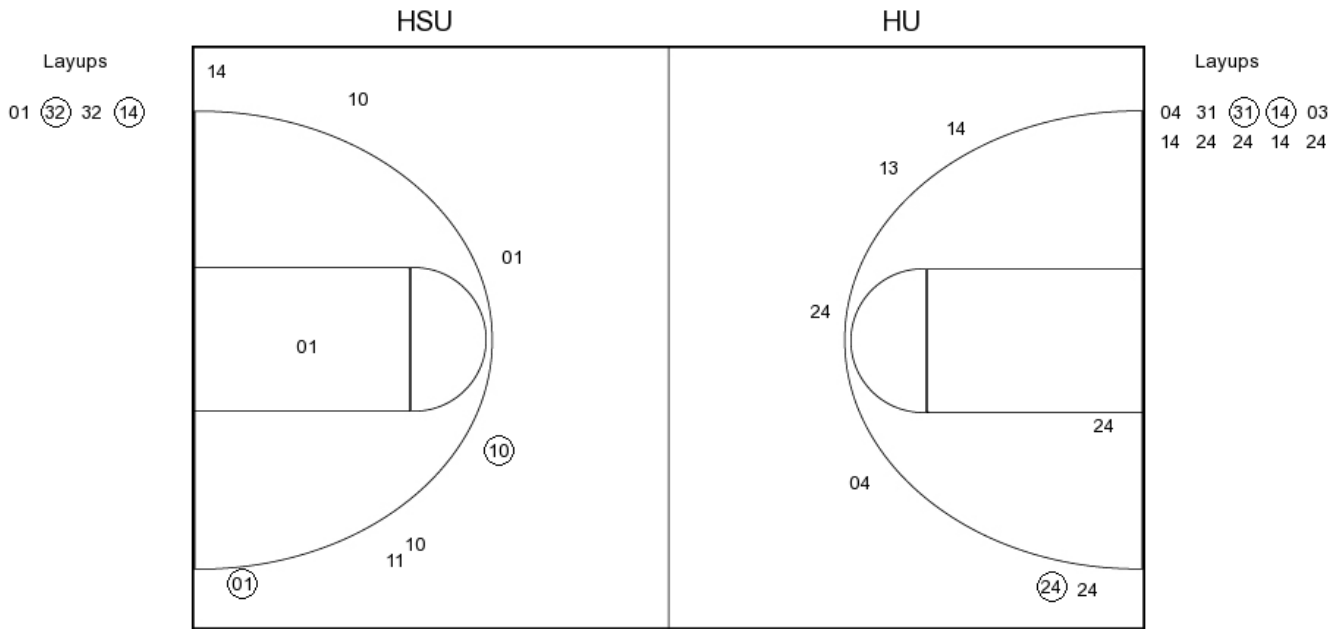
FG Made	9
FG Attempted	33
3PFG Made	3
3PFG Attempted	12

**Henderson St. vs Harding**

**OFFICIAL SHOT CHART**

1/23/2016 at Searcy, Ark. (Rhodes-Reaves Field House)

**PERIOD 2**



**HSU PERIOD 2**

FG Made

FG Attempted

3PFG Made

3PFG Attempted

**HU PERIOD 2**

FG Made

FG Attempted

3PFG Made

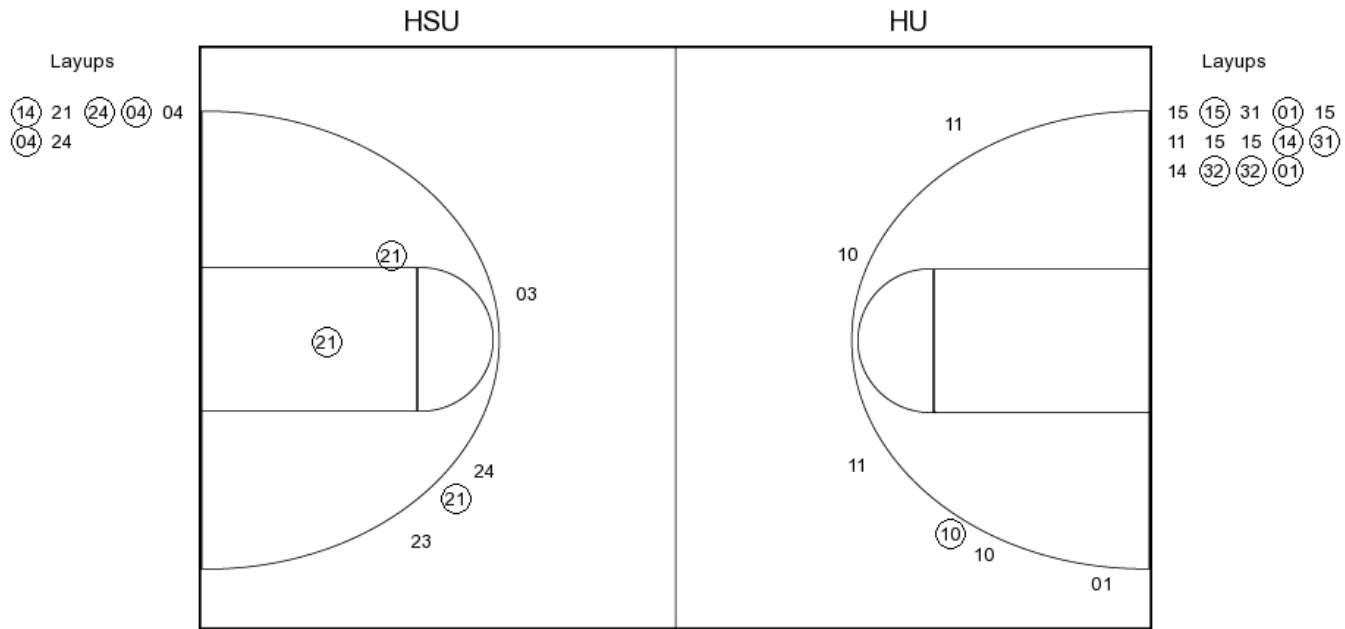
3PFG Attempted

**Henderson St. vs Harding**

**OFFICIAL SHOT CHART**

1/23/2016 at Searcy, Ark. (Rhodes-Reaves Field House)

**PERIOD 3**



**HSU PERIOD 3**

FG Made	14
FG Attempted	34
3PFG Made	2
3PFG Attempted	11

**HU PERIOD 3**

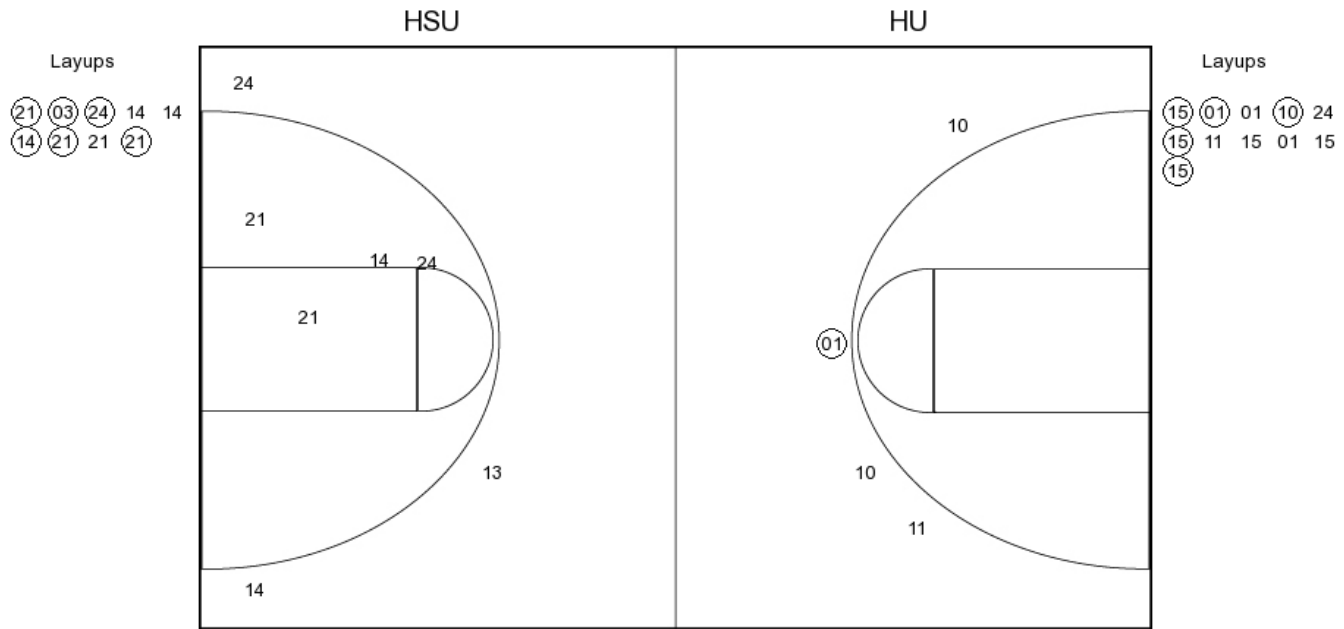
FG Made	13
FG Attempted	31
3PFG Made	1
3PFG Attempted	7

**Henderson St. vs Harding**

**OFFICIAL SHOT CHART**

1/23/2016 at Searcy, Ark. (Rhodes-Reaves Field House)

**PERIOD 4**



**HSU PERIOD 4**

FG Made  
FG Attempted  
3PFG Made  
3PFG Attempted

**HU PERIOD 4**

FG Made  
FG Attempted  
3PFG Made  
3PFG Attempted

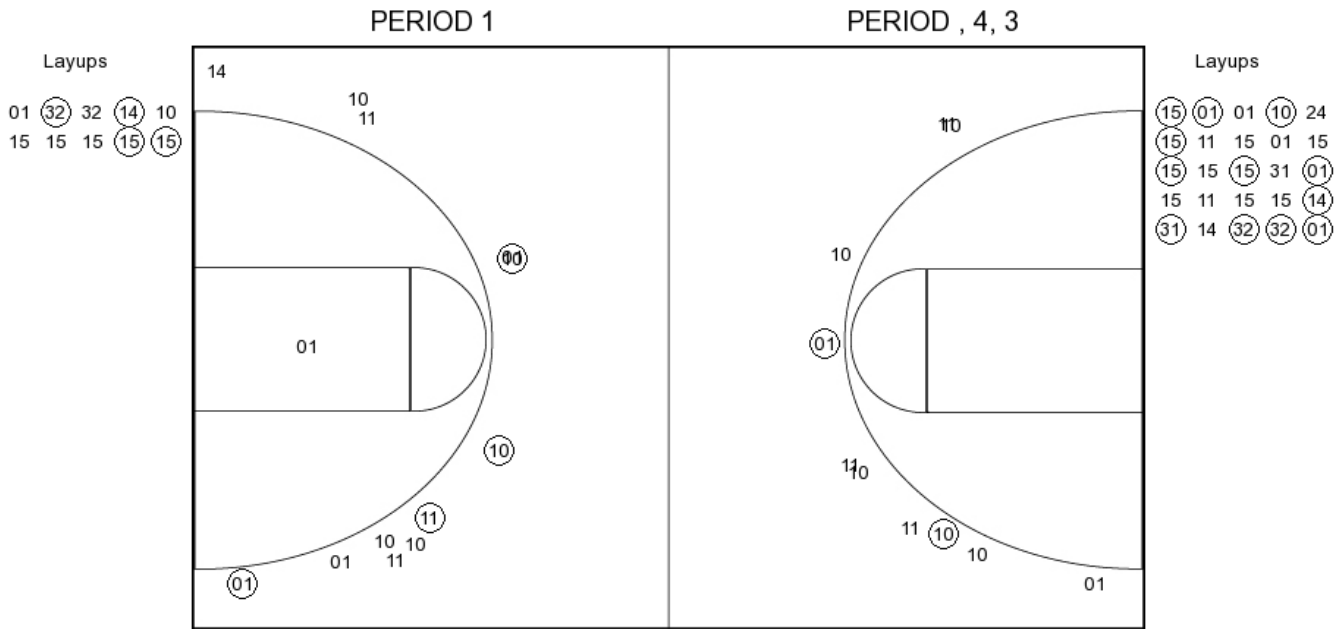


**Henderson St. vs Harding**

**OFFICIAL SHOT CHART**

1/23/2016 at Searcy, Ark. (Rhodes-Reaves Field House)

**Henderson St.**



**HSU PERIOD 1**

FG Made	8
FG Attempted	23
3PFG Made	4
3PFG Attempted	11

**HSU PERIOD 2**

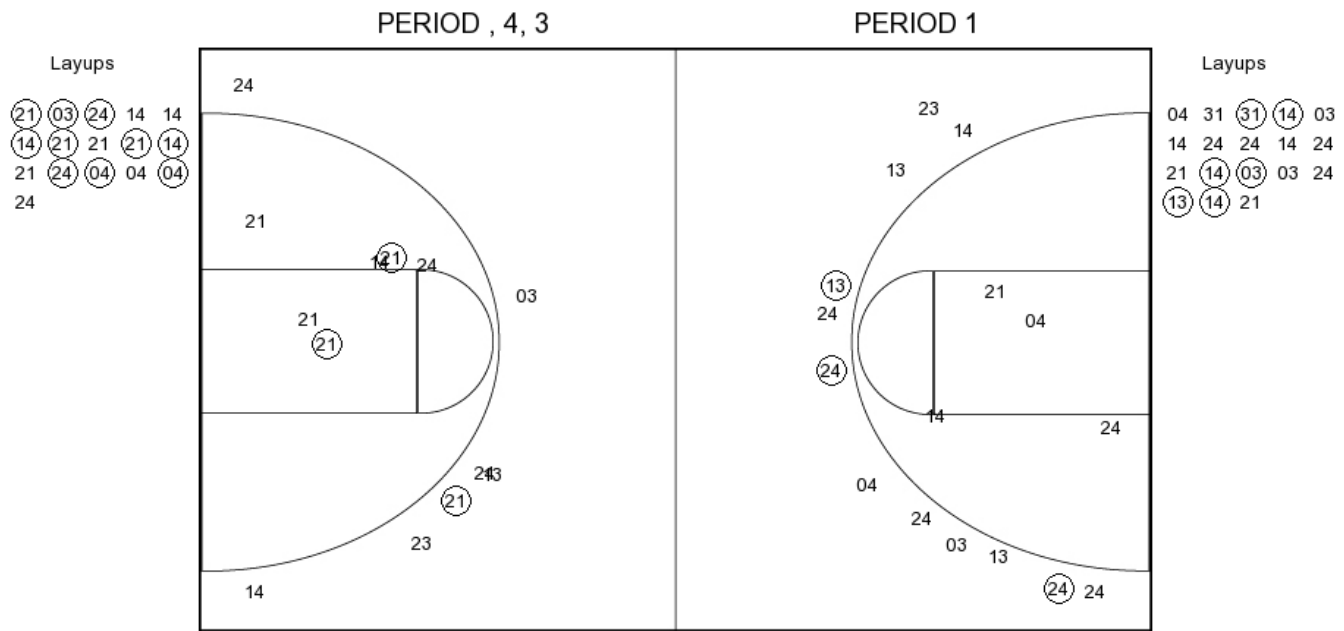
FG Made	
FG Attempted	
3PFG Made	
3PFG Attempted	

**Henderson St. vs Harding**

**OFFICIAL SHOT CHART**

1/23/2016 at Searcy, Ark. (Rhodes-Reaves Field House)

**Harding**



**HU PERIOD 1**

FG Made	9
FG Attempted	33
3PFG Made	3
3PFG Attempted	12

**HU PERIOD 2**

FG Made	
FG Attempted	
3PFG Made	
3PFG Attempted	