

SOUTHEASTERN OKLAHOMA STATE AT HARDING



2/27/2016

Searcy, Ark. (Rhodes-Reaves Field House)

FINAL STATS

Harding

(17-9, 16-5 GAC)

79

Southeastern Okla.

(11-16, 9-12 GAC)

67

Start Time: 1 p.m.

Officials: Robert Burris, Shea Hamilton and Luke Chittum

Attendance: 0

Official Basketball Box Score -- Game Totals -- Final Statistics
Southeastern Okla. vs Harding
2/27/2016 1 p.m. at Searcy, Ark. (Rhodes-Reaves Field House)

Southeastern Okla. 67 - 11-16, 9-12 GAC

##	Player	S	Total			Rebounds			PF	TP	A	TO	Blk	Stl	Min
			FG-FGA	3PT	FG-FGA	FT-FTA	Off Reb	Def Reb							
02	THREADGILL,QUINTON	g	0-2	0-2	0-2	0	0	0	0	0	2	0	0	1	14
03	BZAI,SAMI	g	2-9	0-5	0-0	0	0	0	2	4	3	2	0	2	22
14	FONOLLA,MARTI	g	5-9	2-5	0-1	0	8	8	1	12	2	2	0	0	33
24	JACKSON,NATHAN	g	1-3	0-0	0-1	1	4	5	2	2	1	2	0	1	24
55	WORTHY,ANTONIO	f	0-1	0-0	0-0	0	0	0	0	0	0	0	0	0	3
11	HENDERSON,DJ		10-14	4-7	2-2	0	2	2	2	26	1	2	0	0	27
12	COOK,ANTON		2-9	1-5	2-2	2	1	3	5	7	7	3	0	1	27
22	ROBERTS,KYLE		3-4	2-3	0-0	2	5	7	3	8	0	0	1	1	27
44	PEREZ,ANDER		0-0	0-0	0-0	0	0	0	0	0	0	0	0	0	1
50	LONZIE,TYLER		3-8	0-0	2-2	1	2	3	4	8	0	1	1	0	23
TEAM						1	1	2	0		0				
TOTALS			26-59	9-27	6-10	7	23	30	19	67	16	12	2	6	201

Deadball Rebounds: 1,0

FG %	1st Half:	15-29	51.7%	2nd Half:	11-30	36.7%	Game:	26-59	44.1%
3FG %	1st Half:	8-13	61.5%	2nd Half:	1-14	07.1%	Game:	9-27	33.3%
FT %	1st Half:	2-2	100.0%	2nd Half:	4-8	50.0%	Game:	6-10	60.0%

Harding 79 - 17-9, 16-5 GAC

##	Player	S	Total			Rebounds			PF	TP	A	TO	Blk	Stl	Min
			FG-FGA	3PT	FG-FGA	FT-FTA	Off Reb	Def Reb							
03	ANTHONY,REGGIE	g	4-11	0-0	2-3	1	3	4	0	10	6	2	0	0	38
15	GIBSON,JACOB	g	7-15	7-12	3-4	1	4	5	1	24	2	3	0	2	35
21	FRANCIS,WILL	g	5-8	1-2	0-2	1	3	4	2	11	3	2	0	2	37
23	MCNAIR,BLAKE	g	5-10	4-8	3-4	1	6	7	2	17	2	0	1	0	38
24	BURRELL,ANTOINE	f	1-2	0-0	0-3	1	2	3	2	2	0	1	1	0	13
14	YATES,DAWSON		0-0	0-0	0-0	0	0	0	0	0	0	0	0	0	2
22	HUDSON,JOHN		0-1	0-1	0-0	0	1	1	3	0	0	2	0	0	9
42	ANDELKOVIC,STEFAN		6-7	2-3	1-4	0	6	6	3	15	3	1	0	0	24
50	EGGLESTON,BRADEN		0-0	0-0	0-0	0	0	0	0	0	0	1	0	0	3
TEAM						3	2	5	0		1				
TOTALS			28-54	14-26	9-20	8	27	35	13	79	16	13	2	4	199

Deadball Rebounds: 6,2

FG %	1st Half:	11-26	42.3%	2nd Half:	17-28	60.7%	Game:	28-54	51.9%
3FG %	1st Half:	7-13	53.8%	2nd Half:	7-13	53.8%	Game:	14-26	53.8%
FT %	1st Half:	1-4	25.0%	2nd Half:	8-16	50.0%	Game:	9-20	45.0%

Officials: Robert Burris, Shea Hamilton and Luke Chittum
 Technical Fouls: Southeastern Okla.- None. Harding- None.

Attendance: 0

Score by periods	1st	2nd	Total
Southeastern Okla.	40	27	67
Harding	30	49	79

Points	In Paint	Off T/O	2nd Chance	Fast Break	Bench
SOSU	30	10	12	6	49
HU	28	18	12	2	15

Last FG - SOSU 2nd-01:49, HU 2nd-02:10.

Largest lead - Southeastern Okla. by 12 2nd-19:33; Harding by 12 2nd-00:45

SOSU led for 12:45. HU led for 24:11. Game was tied for 3:04.

Score tied - 6 times
 Lead changed - 8 times

Official Basketball Box Score -- Game Totals -- First Half Statistics
Southeastern Okla. vs Harding
2/27/2016 1 p.m. at Searcy, Ark. (Rhodes-Reaves Field House)

Southeastern Okla., 40, 11-16, 9-12 GAC

##	Player	S	Total			Rebounds			PF	TP	A	T	O	Blk	Stl	Min
			FG-FGA	3PT	FG-FGA	FT-FTA	Off Reb	Def Reb								
02	THREADGILL,QUINTON	g	0-1	0-1	0-0	0	0	0	0	0	2	0	0	1	10	
03	BZAI,SAMI	g	2-4	0-1	0-0	0	0	0	0	4	1	1	0	2	11	
14	FONOLLA,MARTI	g	3-4	2-3	0-0	0	4	4	0	8	1	1	0	0	16	
24	JACKSON,NATHAN	g	0-1	0-0	0-0	1	2	3	1	0	1	2	0	1	11	
55	WORTHY,ANTONIO	f	0-1	0-0	0-0	0	0	0	0	0	0	0	0	0	3	
11	HENDERSON,DJ		4-5	3-4	0-0	0	2	2	1	11	1	1	0	0	10	
12	COOK,ANTON		1-3	1-2	2-2	1	1	2	2	5	4	0	0	0	13	
22	ROBERTS,KYLE		3-3	2-2	0-0	0	2	2	1	8	0	0	0	1	11	
44	PEREZ,ANDER		0-0	0-0	0-0	0	0	0	0	0	0	0	0	0	1	
50	LONZIE,TYLER		2-7	0-0	0-0	0	1	1	1	4	0	1	1	0	14	
TEAM						1	1	2	0		0					
Totals			15-29	8-13	2-2	3	13	16	6	40	10	6	1	5	100	

FG % Half: 15-29 51.7%
 3FG % Half: 8-13 61.5%
 FT % Half: 2-2 100.0%

Harding, 30, 17-9, 16-5 GAC

##	Player	S	Total			Rebounds			PF	TP	A	T	O	Blk	Stl	Min
			FG-FGA	3PT	FG-FGA	FT-FTA	Off Reb	Def Reb								
03	ANTHONY,REGGIE	g	1-5	0-0	0-0	0	2	2	0	2	1	2	0	0	18	
15	GIBSON,JACOB	g	3-8	3-5	0-0	1	2	3	0	9	1	1	0	1	18	
21	FRANCIS,WILL	g	1-2	0-1	0-0	0	1	1	0	2	1	1	0	1	19	
23	MCNAIR,BLAKE	g	4-7	3-5	0-0	1	3	4	1	11	2	0	1	0	18	
24	BURRELL,ANTOINE	f	0-1	0-0	0-2	0	1	1	1	0	0	1	1	0	7	
14	YATES,DAWSON		0-0	0-0	0-0	0	0	0	0	0	0	0	0	0	2	
22	HUDSON,JOHN		0-0	0-0	0-0	0	0	0	1	0	0	2	0	0	5	
42	ANDELKOVIC,STEFAN		2-3	1-2	1-2	0	1	1	0	6	2	0	0	0	10	
50	EGGLESTON,BRADEN		0-0	0-0	0-0	0	0	0	0	0	0	1	0	0	3	
TEAM						1	0	1	0		0					
Totals			11-26	7-13	1-4	3	10	13	3	30	7	8	2	2	100	

FG % Half: 11-26 42.3%
 3FG % Half: 7-13 53.8%
 FT % Half: 1-4 25.0%

Officials: Robert Burris, Shea Hamilton and Luke Chittum
 Technical Fouls: Southeastern Okla.- None. Harding- None.

Score by periods	1st	2nd	Total
Southeastern Okla.	40	27	67
Harding	30	49	79

Points	In Paint	Off T/O	2nd Chance	Fast Break	Bench
SOSU	14	8	8	4	28
HU	8	4	5	0	6

Last FG - SOSU 1st-00:16, HU 1st-02:32.
 SOSU led for 4:25. HU led for 13:07. Game was tied for 2:28.

Score tied - 3 times
 Lead changed - 1 times

Southeastern Okla. vs Harding
2/27/2016; 1 p.m. at Searcy, Ark. (Rhodes-Reaves Field House)
Period 1 Play-By-Play

VISITORS: Southeastern Okla.	Time	Score	Margin	HOME: Harding
	19:36			MISSED LAYUP by GIBSON,JACOB
	19:36			REBOUND (OFF) by GIBSON,JACOB
	19:31	3-0	H 3	GOOD! 3PTR by GIBSON,JACOB
MISSED LAYUP by WORTHY,ANTONIO	19:01			
	19:01			REBOUND (DEF) by GIBSON,JACOB
	18:49			MISSED 3PTR by FRANCIS,WILL
REBOUND (DEF) by JACKSON,NATHAN	18:49			
GOOD! 3PTR by FONOLLA,MARTI	18:29	3-3	T	
ASSIST by JACKSON,NATHAN	18:29			
	18:11			MISSED 3PTR by GIBSON,JACOB
REBOUND (DEF) by FONOLLA,MARTI	18:11			
TURNOVER by FONOLLA,MARTI	17:57			
	17:30	5-3	H 2	GOOD! LAYUP by ANTHONY,REGGIE [PNT]
MISSED LAYUP by JACKSON,NATHAN	17:01			
	17:01			REBOUND (DEF) by ANTHONY,REGGIE
	16:31			FOUL by BURRELL,ANTOINE
	16:31			TURNOVER by BURRELL,ANTOINE
SUB IN: PEREZ,ANDER	16:31			
SUB OUT: WORTHY,ANTONIO	16:31			
MISSED 3PTR by BZAI,SAMI	16:23			
	16:23			REBOUND (DEF) by ANTHONY,REGGIE
	16:14			TURNOVER by ANTHONY,REGGIE
STEAL by JACKSON,NATHAN	16:13			
SUB IN: LONZIE,TYLER	16:11			
SUB OUT: PEREZ,ANDER	16:11			
	16:11			SUB IN: ANDELKOVIC,STEFAN
	16:11			SUB OUT: BURRELL,ANTOINE
FOUL by JACKSON,NATHAN	16:04			
TURNOVER by JACKSON,NATHAN	16:04			
	15:49			MISSED LAYUP by ANTHONY,REGGIE
REBOUND (DEF) by LONZIE,TYLER	15:49			
MISSED JUMPER by LONZIE,TYLER	15:41			
	15:41			REBOUND (DEF) by MCNAIR,BLAKE
	15:14			TURNOVER by GIBSON,JACOB
STEAL by THREADGILL,QUINTON	15:13			
GOOD! LAYUP by LONZIE,TYLER [PNT]	14:53	5-5	T	
ASSIST by THREADGILL,QUINTON	14:53			
	14:35	8-5	H 3	GOOD! 3PTR by MCNAIR,BLAKE
	14:35			ASSIST by FRANCIS,WILL
TURNOVER by BZAI,SAMI	14:00			
	13:58			STEAL by FRANCIS,WILL
	13:48	10-5	H 5	GOOD! LAYUP by FRANCIS,WILL [PNT]
	13:22			FOUL by MCNAIR,BLAKE
SUB IN: ROBERTS,KYLE	13:22			
SUB IN: COOK,ANTON	13:22			
SUB OUT: BZAI,SAMI	13:22			
SUB OUT: JACKSON,NATHAN	13:22			
MISSED LAYUP by LONZIE,TYLER	13:07			
	13:07			REBOUND (DEF) by GIBSON,JACOB
	12:57	13-5	H 8	GOOD! 3PTR by GIBSON,JACOB
	12:57			ASSIST by MCNAIR,BLAKE
GOOD! 3PTR by FONOLLA,MARTI	12:40	13-8	H 5	
ASSIST by THREADGILL,QUINTON	12:40			

VISITORS: Southeastern Okla.	Time	Score	Margin	HOME: Harding
	12:22	15-8	H 7	GOOD! LAYUP by ANDELKOVIC,STEFAN [PNT]
	12:22			ASSIST by GIBSON,JACOB
MISSED 3PTR by COOK,ANTON	12:01			
	12:01			REBOUND (DEF) by FRANCIS,WILL
	11:41	18-8	H 10	GOOD! 3PTR by ANDELKOVIC,STEFAN
	11:41			ASSIST by MCNAIR,BLAKE
TURNOVER by LONZIE,TYLER	11:16			
	11:16			TIMEOUT MEDIA
SUB IN: JACKSON,NATHAN	11:16			
SUB OUT: LONZIE,TYLER	11:16			
	11:16			SUB IN: HUDSON,JOHN
	11:16			SUB OUT: FRANCIS,WILL
	11:07			MISSED 3PTR by ANDELKOVIC,STEFAN
REBOUND (DEF) by TEAM	11:07			
MISSED 3PTR by THREADGILL,QUINTON	10:46			
	10:46			REBOUND (DEF) by MCNAIR,BLAKE
	10:37			MISSED 3PTR by GIBSON,JACOB
REBOUND (DEF) by FONOLLA,MARTI	10:37			
MISSED 3PTR by FONOLLA,MARTI	10:26			
REBOUND (OFF) by JACKSON,NATHAN	10:26			
GOOD! 3PTR by ROBERTS,KYLE	10:14	18-11	H 7	
ASSIST by COOK,ANTON	10:14			
FOUL by ROBERTS,KYLE	09:47			
	09:47			MISSED FT by ANDELKOVIC,STEFAN
	09:47			REBOUND (DEADB) by TEAM
	09:47	19-11	H 8	GOOD! FT by ANDELKOVIC,STEFAN
SUB IN: HENDERSON,DJ	09:47			
SUB OUT: THREADGILL,QUINTON	09:47			
	09:47			SUB IN: FRANCIS,WILL
	09:47			SUB IN: YATES,DAWSON
	09:47			SUB OUT: ANTHONY,REGGIE
	09:47			SUB OUT: GIBSON,JACOB
MISSED 3PTR by HENDERSON,DJ	09:28			
	09:28			REBOUND (DEADB) by TEAM
SUB IN: BZAI,SAMI	09:26			
SUB IN: PEREZ,ANDER	09:26			
SUB OUT: ROBERTS,KYLE	09:26			
SUB OUT: FONOLLA,MARTI	09:26			
	09:12	22-11	H 11	GOOD! 3PTR by MCNAIR,BLAKE
	09:12			ASSIST by ANDELKOVIC,STEFAN
TURNOVER by JACKSON,NATHAN	08:56			
SUB IN: LONZIE,TYLER	08:56			
SUB IN: ROBERTS,KYLE	08:56			
SUB IN: THREADGILL,QUINTON	08:56			
SUB OUT: PEREZ,ANDER	08:56			
SUB OUT: JACKSON,NATHAN	08:56			
	08:46			TURNOVER by HUDSON,JOHN
GOOD! LAYUP by HENDERSON,DJ [PNT]	08:22	22-13	H 9	
ASSIST by COOK,ANTON	08:22			
	08:12			MISSED 3PTR by MCNAIR,BLAKE
REBOUND (DEF) by COOK,ANTON	08:12			
	08:09			SUB IN: GIBSON,JACOB
	08:09			SUB OUT: MCNAIR,BLAKE
MISSED LAYUP by COOK,ANTON	07:41			
REBOUND (OFF) by COOK,ANTON	07:41			
	07:39			FOUL by HUDSON,JOHN
GOOD! FT by COOK,ANTON	07:39	22-14	H 8	
GOOD! FT by COOK,ANTON	07:39	22-15	H 7	

VISITORS: Southeastern Okla.	Time	Score	Margin	HOME: Harding
	07:39			SUB IN: ANTHONY,REGGIE
	07:39			SUB OUT: YATES,DAWSON
	07:25			TURNOVER by HUDSON,JOHN
STEAL by BZAI,SAMI	07:24			
GOOD! LAYUP by BZAI,SAMI [FB/PNT]	07:23	22-17	H 5	
	07:09	25-17	H 8	GOOD! 3PTR by GIBSON,JACOB
	07:09			ASSIST by ANDELKOVIC,STEFAN
GOOD! LAYUP by BZAI,SAMI [PNT]	06:49	25-19	H 6	
	06:27			TURNOVER by FRANCIS,WILL
STEAL by BZAI,SAMI	06:25			
MISSED LAYUP by BZAI,SAMI	06:23			
	06:23			REBOUND (DEF) by ANDELKOVIC,STEFAN
FOUL by HENDERSON,DJ	06:21			
	06:18			TIMEOUT MEDIA
	06:18			SUB IN: EGGLESTON,BRADEN
	06:18			SUB IN: MCNAIR,BLAKE
	06:18			SUB OUT: HUDSON,JOHN
	06:18			SUB OUT: ANDELKOVIC,STEFAN
	06:17			MISSED LAYUP by ANTHONY,REGGIE
REBOUND (DEF) by ROBERTS,KYLE	06:17			
GOOD! 3PTR by COOK,ANTON	06:02	25-22	H 3	
ASSIST by BZAI,SAMI	06:02			
SUB IN: FONOLLA,MARTI	05:43			
SUB OUT: BZAI,SAMI	05:43			
	05:31			MISSED JUMPER by GIBSON,JACOB
REBOUND (DEF) by ROBERTS,KYLE	05:31			
MISSED LAYUP by LONZIE,TYLER	05:14			
	05:14			BLOCK by MCNAIR,BLAKE
REBOUND (OFF) by TEAM	05:14			
GOOD! 3PTR by HENDERSON,DJ	05:07	25-25	T	
ASSIST by COOK,ANTON	05:07			
	04:34			MISSED 3PTR by MCNAIR,BLAKE
BLOCK by LONZIE,TYLER	04:34			
REBOUND (DEF) by HENDERSON,DJ	04:32			
GOOD! 3PTR by ROBERTS,KYLE	04:25	25-28	V 3	
ASSIST by COOK,ANTON	04:25			
	04:10			TIMEOUT 30SEC
	04:10			TIMEOUT MEDIA
FOUL by COOK,ANTON	03:55			
	03:51			MISSED LAYUP by MCNAIR,BLAKE
	03:51			REBOUND (OFF) by MCNAIR,BLAKE
	03:47	27-28	V 1	GOOD! LAYUP by MCNAIR,BLAKE [PNT]
GOOD! LAYUP by FONOLLA,MARTI [PNT]	03:35	27-30	V 3	
	03:13			TURNOVER by ANTHONY,REGGIE
STEAL by ROBERTS,KYLE	03:12			
GOOD! LAYUP by ROBERTS,KYLE [FB/PNT]	03:10	27-32	V 5	
	02:57			TURNOVER by EGGLESTON,BRADEN
SUB IN: JACKSON,NATHAN	02:57			
SUB OUT: ROBERTS,KYLE	02:57			
	02:57			SUB IN: BURRELL,ANTOINE
	02:57			SUB OUT: EGGLESTON,BRADEN
MISSED LAYUP by LONZIE,TYLER	02:45			
	02:45			BLOCK by BURRELL,ANTOINE
	02:45			REBOUND (DEF) by BURRELL,ANTOINE
FOUL by LONZIE,TYLER	02:34			
	02:32	30-32	V 2	GOOD! 3PTR by MCNAIR,BLAKE
	02:32			ASSIST by ANTHONY,REGGIE
MISSED JUMPER by LONZIE,TYLER	02:10			

VISITORS: Southeastern Okla.	Time	Score	Margin	HOME: Harding
	02:10			REBOUND (DEF) by MCNAIR,BLAKE
	01:56			MISSED LAYUP by GIBSON,JACOB
REBOUND (DEF) by FONOLLA,MARTI	01:56			
GOOD! LAYUP by LONZIE,TYLER [PNT]	01:47	30-34	V 4	
ASSIST by HENDERSON,DJ	01:47			
	01:20			MISSED LAYUP by BURRELL,ANTOINE
REBOUND (DEF) by JACKSON,NATHAN	01:20			
GOOD! 3PTR by HENDERSON,DJ	01:06	30-37	V 7	
	00:46			MISSED LAYUP by ANTHONY,REGGIE
REBOUND (DEF) by HENDERSON,DJ	00:46			
TURNOVER by HENDERSON,DJ	00:41			
	00:39			STEAL by GIBSON,JACOB
FOUL by COOK,ANTON	00:36			
	00:36			MISSED FT by BURRELL,ANTOINE
	00:36			REBOUND (DEADB) by TEAM
	00:36			TIMEOUT 30SEC
	00:36			MISSED FT by BURRELL,ANTOINE
REBOUND (DEF) by FONOLLA,MARTI	00:36			
SUB IN: ROBERTS,KYLE	00:36			
SUB IN: BZAI,SAMI	00:36			
SUB OUT: COOK,ANTON	00:36			
SUB OUT: JACKSON,NATHAN	00:36			
GOOD! 3PTR by HENDERSON,DJ	00:16	30-40	V 10	
ASSIST by FONOLLA,MARTI	00:16			
	00:08			SUB IN: ANDELKOVIC,STEFAN
	00:08			SUB OUT: BURRELL,ANTOINE
	00:01			MISSED LAYUP by ANTHONY,REGGIE
	00:00			REBOUND (OFF) by TEAM

Southeastern Okla. 40, Harding 30

Period 1-only	In Paint	Off T/O	2nd Chance	Fast Break	Bench	****
SOSU	14	8	8	4	28	Score tied - 6 times
HU	8	4	5	0	6	Lead changed - 2 times

Official Basketball Box Score -- Game Totals -- Second Half Statistics
Southeastern Okla. vs Harding
2/27/2016 1 p.m. at Searcy, Ark. (Rhodes-Reaves Field House)

Southeastern Okla., 27, 11-16, 9-12 GAC

##	Player	S	Total			Rebounds			PF	TP	A	TO	Blk	Stl	Min
			FG-FGA	3PT FG-FGA	FT-FTA	Off Reb	Def Reb	Tot Reb							
02	THREADGILL,QUINTON	g	0-1	0-1	0-2	0	0	0	0	0	0	0	0	0	4
03	BZAI,SAMI	g	0-5	0-4	0-0	0	0	0	2	0	2	1	0	0	11
14	FONOLLA,MARTI	g	2-5	0-2	0-1	0	4	4	1	4	1	1	0	0	17
24	JACKSON,NATHAN	g	1-2	0-0	0-1	0	2	2	1	2	0	0	0	0	13
55	WORTHY,ANTONIO	f	0-0	0-0	0-0	0	0	0	0	0	0	0	0	0	0
11	HENDERSON,DJ		6-9	1-3	2-2	0	0	0	1	15	0	1	0	0	17
12	COOK,ANTON		1-6	0-3	0-0	1	0	1	3	2	3	3	0	1	14
22	ROBERTS,KYLE		0-1	0-1	0-0	2	3	5	2	0	0	0	1	0	16
44	PEREZ,ANDER		0-0	0-0	0-0	0	0	0	0	0	0	0	0	0	0
50	LONZIE,TYLER		1-1	0-0	2-2	1	1	2	3	4	0	0	0	0	9
TEAM						0	0	0	0		0				
Totals			11-30	1-14	4-8	4	10	14	13	27	6	6	1	1	101

FG % Half: 11-30 36.7%
 3FG % Half: 1-14 61.5%
 FT % Half: 4-8 50.0%

Harding, 49, 17-9, 16-5 GAC

##	Player	S	Total			Rebounds			PF	TP	A	TO	Blk	Stl	Min
			FG-FGA	3PT FG-FGA	FT-FTA	Off Reb	Def Reb	Tot Reb							
03	ANTHONY,REGGIE	g	3-6	0-0	2-3	1	1	2	0	8	5	0	0	0	20
15	GIBSON,JACOB	g	4-7	4-7	3-4	0	2	2	1	15	1	2	0	1	17
21	FRANCIS,WILL	g	4-6	1-1	0-2	1	2	3	2	9	2	1	0	1	18
23	MCNAIR,BLAKE	g	1-3	1-3	3-4	0	3	3	1	6	0	0	0	0	20
24	BURRELL,ANTOINE	f	1-1	0-0	0-1	1	1	2	1	2	0	0	0	0	6
14	YATES,DAWSON		0-0	0-0	0-0	0	0	0	0	0	0	0	0	0	0
22	HUDSON,JOHN		0-1	0-1	0-0	0	1	1	2	0	0	0	0	0	4
42	ANDELKOVIC,STEFAN		4-4	1-1	0-2	0	5	5	3	9	1	1	0	0	14
50	EGGLESTON,BRADEN		0-0	0-0	0-0	0	0	0	0	0	0	0	0	0	0
TEAM						2	2	4	0		1				
Totals			17-28	7-13	8-16	5	17	22	10	49	9	5	0	2	99

FG % Half: 17-28 60.7%
 3FG % Half: 7-13 53.8%
 FT % Half: 8-16 50.0%

Officials: Robert Burris, Shea Hamilton and Luke Chittum
 Technical Fouls: Southeastern Okla.- None. Harding- None.

Score by periods	1st	2nd	Total
Southeastern Okla.	40	27	67
Harding	30	49	79

Points	In Paint	Off T/O	2nd Chance	Fast Break	Bench
SOSU	16	2	4	2	21
HU	20	14	7	2	9

Last FG - SOSU 2nd-01:49, HU 2nd-02:10.
 SOSU led for 8:20. HU led for 11:04. Game was tied for 0:36.

Score tied - 3 times
 Lead changed - 7 times

Southeastern Okla. vs Harding
2/27/2016; 1 p.m. at Searcy, Ark. (Rhodes-Reaves Field House)
Period 2 Play-By-Play

VISITORS: Southeastern Okla.	Time	Score	Margin	HOME: Harding
SUB IN: LONZIE, TYLER	20:00			
SUB IN: HENDERSON, DJ	20:00			
SUB OUT: THREADGILL, QUINTON	20:00			
SUB OUT: WORTHY, ANTONIO	20:00			
	19:46			FOUL by BURRELL, ANTOINE
GOOD! LAYUP by FONOLLA, MARTI [PNT]	19:33	30-42	V 12	
	19:33			FOUL by GIBSON, JACOB
MISSED FT by FONOLLA, MARTI	19:33			
	19:33			REBOUND (DEF) by FRANCIS, WILL
	19:23			MISSED LAYUP by FRANCIS, WILL
REBOUND (DEF) by LONZIE, TYLER	19:23			
FOUL by BZAI, SAMI	19:12			
TURNOVER by BZAI, SAMI	19:12			
	19:02	33-42	V 9	GOOD! 3PTR by GIBSON, JACOB
	19:02			ASSIST by FRANCIS, WILL
GOOD! JUMPER by HENDERSON, DJ	18:38	33-44	V 11	
FOUL by LONZIE, TYLER	18:19			
FOUL by LONZIE, TYLER	18:16			
	18:16			MISSED FT by FRANCIS, WILL
	18:16			REBOUND (DEADB) by TEAM
	18:16			MISSED FT by FRANCIS, WILL
REBOUND (DEF) by FONOLLA, MARTI	18:16			
SUB IN: ROBERTS, KYLE	18:16			
SUB OUT: LONZIE, TYLER	18:16			
MISSED LAYUP by FONOLLA, MARTI	17:54			
	17:54			REBOUND (DEF) by GIBSON, JACOB
	17:40	36-44	V 8	GOOD! 3PTR by MCNAIR, BLAKE
	17:40			ASSIST by FRANCIS, WILL
MISSED 3PTR by FONOLLA, MARTI	17:25			
	17:25			REBOUND (DEF) by GIBSON, JACOB
	17:13			MISSED LAYUP by ANTHONY, REGGIE
	17:13			REBOUND (OFF) by BURRELL, ANTOINE
	17:10	38-44	V 6	GOOD! LAYUP by BURRELL, ANTOINE [PNT]
FOUL by JACKSON, NATHAN	17:10			
	17:10			MISSED FT by BURRELL, ANTOINE
REBOUND (DEF) by FONOLLA, MARTI	17:10			
SUB IN: THREADGILL, QUINTON	17:10			
SUB OUT: HENDERSON, DJ	17:10			
MISSED JUMPER by JACKSON, NATHAN	16:53			
	16:53			REBOUND (DEF) by TEAM
	16:44	40-44	V 4	GOOD! LAYUP by FRANCIS, WILL [PNT]
MISSED LAYUP by BZAI, SAMI	16:21			
	16:21			REBOUND (DEF) by MCNAIR, BLAKE
	16:13			TURNOVER by GIBSON, JACOB
SUB IN: COOK, ANTON	16:13			
SUB OUT: BZAI, SAMI	16:13			
MISSED LAYUP by COOK, ANTON	15:48			
	15:48			REBOUND (DEF) by BURRELL, ANTOINE
	15:37			FOUL by FRANCIS, WILL
	15:37			TURNOVER by FRANCIS, WILL
TIMEOUT MEDIA	15:37			
SUB IN: LONZIE, TYLER	15:37			
SUB OUT: JACKSON, NATHAN	15:37			

VISITORS: Southeastern Okla.	Time	Score	Margin	HOME: Harding
TURNOVER by COOK,ANTON	15:08			
	14:52	43-44	V 1	GOOD! 3PTR by FRANCIS,WILL
	14:52			ASSIST by GIBSON,JACOB
	14:29			FOUL by FRANCIS,WILL
GOOD! FT by LONZIE,TYLER	14:29	43-45	V 2	
GOOD! FT by LONZIE,TYLER	14:29	43-46	V 3	
SUB IN: HENDERSON,DJ	14:29			
SUB OUT: THREADGILL,QUINTON	14:29			
	14:29			SUB IN: ANDELKOVIC,STEFAN
	14:29			SUB OUT: BURRELL,ANTOINE
	14:09	45-46	V 1	GOOD! LAYUP by ANDELKOVIC,STEFAN [PNT]
GOOD! LAYUP by HENDERSON,DJ [PNT]	13:49	45-48	V 3	
	13:42			MISSED 3PTR by MCNAIR,BLAKE
	13:42			REBOUND (OFF) by TEAM
	13:26			MISSED LAYUP by ANTHONY,REGGIE
BLOCK by ROBERTS,KYLE	13:26			
	13:26			REBOUND (OFF) by TEAM
	13:22	48-48	T	GOOD! 3PTR by GIBSON,JACOB
	13:22			ASSIST by ANDELKOVIC,STEFAN
MISSED 3PTR by COOK,ANTON	13:03			
	13:03			REBOUND (DEADB) by TEAM
	12:46	50-48	H 2	GOOD! LAYUP by ANTHONY,REGGIE [PNT]
TURNOVER by FONOLLA,MARTI	12:36			
	12:19	53-48	H 5	GOOD! 3PTR by ANDELKOVIC,STEFAN
	12:19			ASSIST by ANTHONY,REGGIE
TIMEOUT 30SEC	12:15			
SUB IN: JACKSON,NATHAN	12:15			
SUB OUT: ROBERTS,KYLE	12:15			
TURNOVER by HENDERSON,DJ	12:07			
	12:06			STEAL by FRANCIS,WILL
	12:04	55-48	H 7	GOOD! LAYUP by FRANCIS,WILL [FB/PNT]
MISSED LAYUP by HENDERSON,DJ	11:51			
REBOUND (OFF) by LONZIE,TYLER	11:51			
GOOD! LAYUP by LONZIE,TYLER [PNT]	11:44	55-50	H 5	
FOUL by LONZIE,TYLER	11:31			
	11:31			TIMEOUT MEDIA
SUB IN: ROBERTS,KYLE	11:31			
SUB OUT: LONZIE,TYLER	11:31			
	11:20			TURNOVER by GIBSON,JACOB
STEAL by COOK,ANTON	11:19			
GOOD! LAYUP by FONOLLA,MARTI [FB/PNT]	11:16	55-52	H 3	
ASSIST by COOK,ANTON	11:16			
	10:54			MISSED 3PTR by GIBSON,JACOB
	10:54			REBOUND (OFF) by ANTHONY,REGGIE
	10:36			MISSED 3PTR by MCNAIR,BLAKE
REBOUND (DEF) by FONOLLA,MARTI	10:36			
GOOD! LAYUP by JACKSON,NATHAN [PNT]	10:24	55-54	H 1	
ASSIST by COOK,ANTON	10:24			
	10:13			MISSED 3PTR by GIBSON,JACOB
REBOUND (DEF) by FONOLLA,MARTI	10:13			
GOOD! 3PTR by HENDERSON,DJ	09:47	55-57	V 2	
ASSIST by FONOLLA,MARTI	09:47			
	09:20	57-57	T	GOOD! LAYUP by ANTHONY,REGGIE [PNT]
FOUL by FONOLLA,MARTI	09:20			
	09:20	58-57	H 1	GOOD! FT by ANTHONY,REGGIE
SUB IN: BZAI,SAMI	09:20			
SUB OUT: FONOLLA,MARTI	09:20			
	09:20			SUB IN: HUDSON,JOHN

VISITORS: Southeastern Okla.	Time	Score	Margin	HOME: Harding
	09:20			SUB OUT: FRANCIS,WILL
	09:01			FOUL by HUDSON,JOHN
GOOD! LAYUP by HENDERSON,DJ [PNT]	08:35	58-59	V 1	
ASSIST by COOK,ANTON	08:31			
	08:13			MISSED 3PTR by GIBSON,JACOB
REBOUND (DEF) by JACKSON,NATHAN	08:13			
MISSED 3PTR by BZAI,SAMI	07:47			
	07:47			REBOUND (DEF) by ANDELKOVIC,STEFAN
FOUL by COOK,ANTON	07:38			
	07:38			TIMEOUT MEDIA
	07:38	59-59	T	GOOD! FT by GIBSON,JACOB
	07:38	60-59	H 1	GOOD! FT by GIBSON,JACOB
	07:38			SUB IN: FRANCIS,WILL
	07:38			SUB OUT: GIBSON,JACOB
GOOD! JUMPER by HENDERSON,DJ	07:12	60-61	V 1	
ASSIST by BZAI,SAMI	07:12			
	06:54	62-61	H 1	GOOD! LAYUP by ANDELKOVIC,STEFAN [PNT]
	06:54			ASSIST by ANTHONY,REGGIE
MISSED 3PTR by COOK,ANTON	06:38			
	06:38			REBOUND (DEF) by ANTHONY,REGGIE
	06:24	64-61	H 3	GOOD! LAYUP by ANDELKOVIC,STEFAN [PNT]
	06:24			ASSIST by ANTHONY,REGGIE
	06:11			FOUL by ANDELKOVIC,STEFAN
SUB IN: FONOLLA,MARTI	06:11			
SUB OUT: ROBERTS,KYLE	06:11			
GOOD! LAYUP by HENDERSON,DJ [PNT]	06:04	64-63	H 1	
ASSIST by BZAI,SAMI	06:04			
	05:48			MISSED 3PTR by HUDSON,JOHN
	05:48			REBOUND (OFF) by FRANCIS,WILL
	05:46	66-63	H 3	GOOD! LAYUP by FRANCIS,WILL [PNT]
MISSED LAYUP by COOK,ANTON	05:34			
	05:34			REBOUND (DEF) by HUDSON,JOHN
	05:12	68-63	H 5	GOOD! LAYUP by ANTHONY,REGGIE [PNT]
	04:53			FOUL by HUDSON,JOHN
MISSED FT by JACKSON,NATHAN	04:53			
	04:53			REBOUND (DEF) by FRANCIS,WILL
SUB IN: ROBERTS,KYLE	04:53			
SUB OUT: COOK,ANTON	04:53			
	04:53			SUB IN: GIBSON,JACOB
	04:53			SUB OUT: HUDSON,JOHN
	04:37	71-63	H 8	GOOD! 3PTR by GIBSON,JACOB
	04:37			ASSIST by ANTHONY,REGGIE
MISSED 3PTR by BZAI,SAMI	04:27			
	04:27			REBOUND (DEF) by ANDELKOVIC,STEFAN
	04:15			MISSED LAYUP by FRANCIS,WILL
REBOUND (DEF) by JACKSON,NATHAN	04:15			
	04:03			FOUL by MCNAIR,BLAKE
GOOD! FT by HENDERSON,DJ	04:03	71-64	H 7	
GOOD! FT by HENDERSON,DJ	04:03	71-65	H 6	
SUB IN: COOK,ANTON	04:03			
SUB IN: LONZIE,TYLER	04:03			
SUB OUT: JACKSON,NATHAN	04:03			
SUB OUT: BZAI,SAMI	04:03			
	03:45			MISSED LAYUP by ANTHONY,REGGIE
REBOUND (DEF) by ROBERTS,KYLE	03:45			
TURNOVER by COOK,ANTON	03:29			
	03:29			STEAL by GIBSON,JACOB
	03:28			TIMEOUT MEDIA

VISITORS: Southeastern Okla.	Time	Score	Margin	HOME: Harding
	03:13			FOUL by ANDELKOVIC,STEFAN
	03:13			TURNOVER by ANDELKOVIC,STEFAN
MISSED 3PTR by COOK,ANTON	02:59			
	02:59			REBOUND (DEF) by TEAM
FOUL by ROBERTS,KYLE	02:42			
	02:42	72-65	H 7	GOOD! FT by MCNAIR,BLAKE
	02:42			MISSED FT by MCNAIR,BLAKE
REBOUND (DEF) by ROBERTS,KYLE	02:42			
FOUL by COOK,ANTON	02:34			
TURNOVER by COOK,ANTON	02:34			
	02:10	75-65	H 10	GOOD! 3PTR by GIBSON,JACOB
	02:10			ASSIST by ANTHONY,REGGIE
MISSED 3PTR by ROBERTS,KYLE	01:53			
REBOUND (OFF) by COOK,ANTON	01:53			
GOOD! LAYUP by COOK,ANTON [PNT]	01:49	75-67	H 8	
TIMEOUT 30SEC	01:42			
FOUL by COOK,ANTON	01:34			
	01:34			MISSED FT by ANTHONY,REGGIE
	01:34			REBOUND (DEADB) by TEAM
	01:34	76-67	H 9	GOOD! FT by ANTHONY,REGGIE
SUB IN: BZAI,SAMI	01:34			
SUB OUT: COOK,ANTON	01:34			
MISSED 3PTR by FONOLLA,MARTI	01:24			
REBOUND (OFF) by ROBERTS,KYLE	01:24			
MISSED 3PTR by HENDERSON,DJ	01:21			
	01:21			REBOUND (DEF) by ANDELKOVIC,STEFAN
FOUL by BZAI,SAMI	01:12			
	01:12	77-67	H 10	GOOD! FT by MCNAIR,BLAKE
	01:12	78-67	H 11	GOOD! FT by MCNAIR,BLAKE
SUB IN: THREADGILL,QUINTON	01:12			
SUB OUT: LONZIE,TYLER	01:12			
	01:05			FOUL by ANDELKOVIC,STEFAN
MISSED FT by THREADGILL,QUINTON	01:05			
REBOUND (DEADB) by TEAM	01:05			
MISSED FT by THREADGILL,QUINTON	01:05			
	01:05			REBOUND (DEF) by ANDELKOVIC,STEFAN
FOUL by ROBERTS,KYLE	01:02			
	01:02			MISSED FT by ANDELKOVIC,STEFAN
	01:02			REBOUND (DEADB) by TEAM
	01:02			MISSED FT by ANDELKOVIC,STEFAN
REBOUND (DEF) by ROBERTS,KYLE	01:02			
MISSED 3PTR by BZAI,SAMI	00:56			
REBOUND (OFF) by ROBERTS,KYLE	00:56			
MISSED 3PTR by THREADGILL,QUINTON	00:49			
	00:49			REBOUND (DEF) by ANDELKOVIC,STEFAN
FOUL by HENDERSON,DJ	00:45			
	00:45			MISSED FT by GIBSON,JACOB
	00:45			REBOUND (DEADB) by TEAM
	00:45	79-67	H 12	GOOD! FT by GIBSON,JACOB
MISSED 3PTR by HENDERSON,DJ	00:40			
	00:40			REBOUND (DEF) by MCNAIR,BLAKE
	00:09			TURNOVER by TEAM
MISSED 3PTR by BZAI,SAMI	00:06			
	00:06			REBOUND (DEF) by MCNAIR,BLAKE

Period 2-only	In Paint	Off T/O	2nd Chance	Fast Break	Bench	****
SOSU	16	2	4	2	21	Score tied - 0 times
HU	20	14	7	2	9	Lead changed - 6 times

Southeastern Okla. vs Harding
2/27/2016; 1 p.m. at Searcy, Ark. (Rhodes-Reaves Field House)
Scoring/Runs Reference

Period 1			Period 2		
Southeastern Okla.	Score	Harding	Southeastern Okla.	Score	Harding
	X	GIBSON,LAYUP - 19:36	19:33,- FONOLLA,LAYUP	2 ^P 42-30 -12	
	0-3 3	GIBSON,3PTR,-,19:31	19:33 - FONOLLA,FT	X	
19:01 - WORTHY,LAYUP	X			X	FRANCIS,LAYUP - 19:23
	X	FRANCIS,3PTR - 18:49	19:12,-,BZAI TURN	TO	
18:29,- FONOLLA,3PTR	3 3-3 0	GIBSON,3PTR - 18:11	18:38,- HENDERSON,JUMPER	2 42-33 -9 44-33 -11	3 GIBSON,3PTR,-,19:02
17:57,-,FONOLLA TURN	TO			X	FRANCIS,FT - 18:16
	3-5 2	2 ^P ANTHONY,LAYUP,-,17:30	17:54 - FONOLLA,LAYUP	X	
17:01 - JACKSON,LAYUP	X		17:25 - FONOLLA,3PTR	X 44-36 -8	3 MCNAIR,3PTR,-,17:40
	TO	BURRELL TURN - 16:31		X	ANTHONY,LAYUP - 17:13
16:23 - BZAI,3PTR	X			44-38 -6	2 ^P BURRELL,LAYUP,-,17:10
	TO	ANTHONY TURN - 16:14		X	BURRELL,FT - 17:10
16:04,-,JACKSON TURN	TO		16:53 - JACKSON,JUMPER	X	
	X	ANTHONY,LAYUP - 15:49		44-40 -4	2 ^P FRANCIS,LAYUP,-,16:44
15:41 - LONZIE,JUMPER	X		16:21 - BZAI,LAYUP	X	
	TO	GIBSON TURN -,15:14		TO	GIBSON TURN -,16:13
14:53,- LONZIE,LAYUP	2 ^P 5-5 0		15:48 - COOK,LAYUP	X	
	5-8 3	3 MCNAIR,3PTR,-,14:35		TO	FRANCIS TURN - 15:37
14:00,-,BZAI TURN	TO		15:08,-,COOK TURN	TO	
	5-10 5	2 ^P FRANCIS,LAYUP,-,13:48		44-43 -1	3 FRANCIS,3PTR,-,14:52
13:07 - LONZIE,LAYUP	X		14:29,-,LONZIE,FT	1 45-43 -2	
	5-13 8	3 GIBSON,3PTR,-,12:57	14:29,-,LONZIE,FT	1 46-43 -3	
12:40,- FONOLLA,3PTR	3 8-13 5	2 ^P ANDELKOVIC,LAYUP,-,12:22		46-45 -1	2 ^P ANDELKOVIC,LAYUP,-,14:09
	8-15 7		13:49,- HENDERSON,LAYUP	2 ^P 48-45 -3	
12:01 - COOK,3PTR	X			X	MCNAIR,3PTR - 13:42
	8-18 10	3 ANDELKOVIC,3PTR,-,11:41		X	ANTHONY,LAYUP - 13:26
11:16,-,LONZIE TURN	TO		13:03 - COOK,3PTR	X	
	X	ANDELKOVIC,3PTR - 11:07		48-48 0	3 GIBSON,3PTR,-,13:22
10:46 - THREADGILL,3PTR	X		12:36,-,FONOLLA TURN	TO	
	X	GIBSON,3PTR - 10:37		48-50 2	2 ^P ANTHONY,LAYUP,-,12:46
			12:07,-,HENDERSON TURN	TO	
				48-53 5	3 ANDELKOVIC,3PTR,-,12:19

10:26 - FONOLLA,3PTR	X						48-55 7	2 ^{PF}	FRANCIS,LAYUP,- 12:04
10:14,- ,ROBERTS,3PTR	3	11-18 7							
			X			ANDELKOVIC,FT - 09:47			
				X	1	ANDELKOVIC,FT,- ,09:47			
09:28 - HENDERSON,3PTR	X								
		11-22 11	3			MCNAIR,3PTR,-,09:12			
08:56,-,JACKSON TURN									
						HUDSON TURN - ,08:46			
08:22,- ,HENDERSON,LAYUP	2 ^P	13-22 9							
			X			MCNAIR,3PTR - 08:12			
07:41 - COOK,LAYUP	X								
07:39,-,COOK,FT	1	14-22 8							
07:39,-,COOK,FT	1	15-22 7							
						HUDSON TURN - ,07:25			
07:23,-,BZAI,LAYUP	2 ^{PF}	17-22 5							
		17-25 8	3			GIBSON,3PTR,-,07:09			
06:49,-,BZAI,LAYUP	2 ^P	19-25 6							
						FRANCIS TURN - ,06:27			
06:23 - BZAI,LAYUP	X								
			X			ANTHONY,LAYUP - 06:17			
06:02,-,COOK,3PTR	3	22-25 3							
			X			GIBSON,JUMPER - 05:31			
05:14 - LONZIE,LAYUP	X								
05:07,- ,HENDERSON,3PTR	3	25-25 0							
			X			MCNAIR,3PTR - 04:34			
04:25,- ,ROBERTS,3PTR	3	28-25 -3							
			X			MCNAIR,LAYUP - 03:51			
				X	2 ^P	MCNAIR,LAYUP,- ,03:47			
03:35,- ,FONOLLA,LAYUP	2 ^P	30-27 -3							
						ANTHONY TURN - ,03:13			
03:10,- ,ROBERTS,LAYUP	2 ^{PF}	32-27 -5							
						EGGLESTON TURN - ,02:57			
02:45 - LONZIE,LAYUP	X								
		32-30 -2	3			MCNAIR,3PTR,-,02:32			
11:51 - HENDERSON,LAYUP	X								
11:44,-,LONZIE,LAYUP	2 ^P	50-55 5							TO GIBSON TURN -,11:20
11:16,- ,FONOLLA,LAYUP	2 ^{PF}	52-55 3							
				X		GIBSON,3PTR - 10:54			
				X		MCNAIR,3PTR - 10:36			
10:24,- ,JACKSON,LAYUP	2 ^P	54-55 1							
				X		GIBSON,3PTR - 10:13			
09:47,- ,HENDERSON,3PTR	3	57-55 -2							
		57-57 0			2 ^P	ANTHONY,LAYUP,- ,09:20			
		57-58 1			1	ANTHONY,FT,-,09:20			
08:35,- ,HENDERSON,LAYUP	2 ^P	59-58 -1							
				X		GIBSON,3PTR - 08:13			
07:47 - BZAI,3PTR	X								
		59-59 0			1	GIBSON,FT,-,07:38			
		59-60 1			1	GIBSON,FT,-,07:38			
07:12,- ,HENDERSON,JUMPER	2	61-60 -1							
		61-62 1			2 ^P	ANDELKOVIC,LAYUP,- ,06:54			
06:38 - COOK,3PTR	X								
		61-64 3			2 ^P	ANDELKOVIC,LAYUP,- ,06:24			
06:04,- ,HENDERSON,LAYUP	2 ^P	63-64 1							
				X		HUDSON,3PTR - 05:48			
		63-66 3			2 ^P	FRANCIS,LAYUP,- ,05:46			
05:34 - COOK,LAYUP	X								
		63-68 5			2 ^P	ANTHONY,LAYUP,- ,05:12			
04:53 - JACKSON,FT	X								
		63-71 8			3	GIBSON,3PTR,-,04:37			
04:27 - BZAI,3PTR	X								
				X		FRANCIS,LAYUP - 04:15			
04:03,- ,HENDERSON,FT	1	64-71 7							
04:03,- ,HENDERSON,FT	1	65-71 6							
				X		ANTHONY,LAYUP - 03:45			
03:29,-,COOK TURN									
						TO ANDELKOVIC TURN - ,03:13			
02:59 - COOK,3PTR	X								
		65-72 7			1	MCNAIR,FT,-,02:42			

02:10 - LONZIE,JUMPER X

01:47,- ,LONZIE,LAYUP 2^P 34-30 -4 X

01:06,- ,HENDERSON,3PTR 3 37-30 -7 X

00:41,- ,HENDERSON TURN TO

00:16,- ,HENDERSON,3PTR 3 40-30 -10 X

X GIBSON,LAYUP - 01:56

X BURRELL,LAYUP - 01:20

X ANTHONY,LAYUP - 00:46

X BURRELL,FT - 00:36

X BURRELL,FT - 00:36

X ANTHONY,LAYUP - 00:01

MCNAIR,FT - 02:42 X

02:34,- ,COOK TURN TO

01:53 - ROBERTS,3PTR X 65-75 10 3 GIBSON,3PTR,-,02:10

01:49,- ,COOK,LAYUP 2^P 67-75 8 X

01:24 - FONOLLA,3PTR X

01:21 - HENDERSON,3PTR X

01:05 - THREADGILL,FT X 67-77 10 1 MCNAIR,FT,-,01:12

01:05 - THREADGILL,FT X 67-78 11 1 MCNAIR,FT,-,01:12

00:56 - BZAI,3PTR X

00:49 - THREADGILL,3PTR X

00:40 - HENDERSON,3PTR X

00:06 - BZAI,3PTR X

X ANDELKOVIC,FT - 01:02

X ANDELKOVIC,FT - 01:02

X GIBSON,FT - 00:45

X GIBSON,FT,-,00:45 67-79 12 1

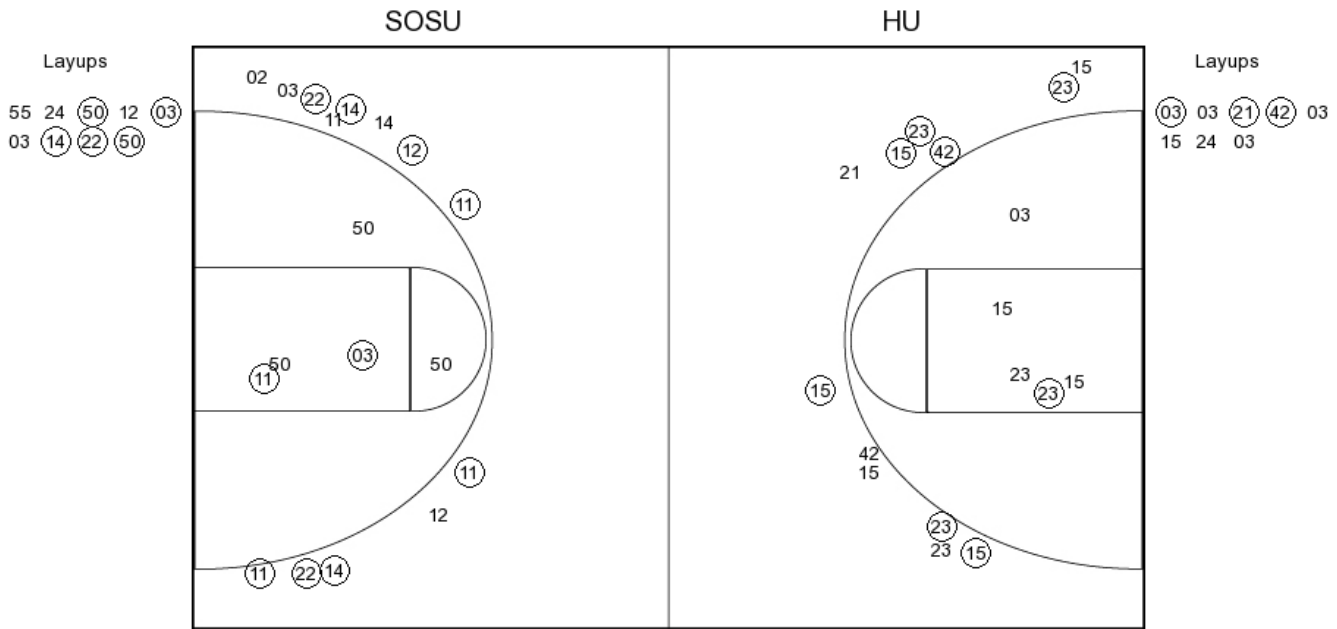
TO TEAM TURN -,00:09

Southeastern Okla. vs Harding

OFFICIAL SHOT CHART

2/27/2016 at Searcy, Ark. (Rhodes-Reaves Field House)

PERIOD 1



SOSU PERIOD 1

FG Made	15
FG Attempted	29
3PFG Made	8
3PFG Attempted	13

HU PERIOD 1

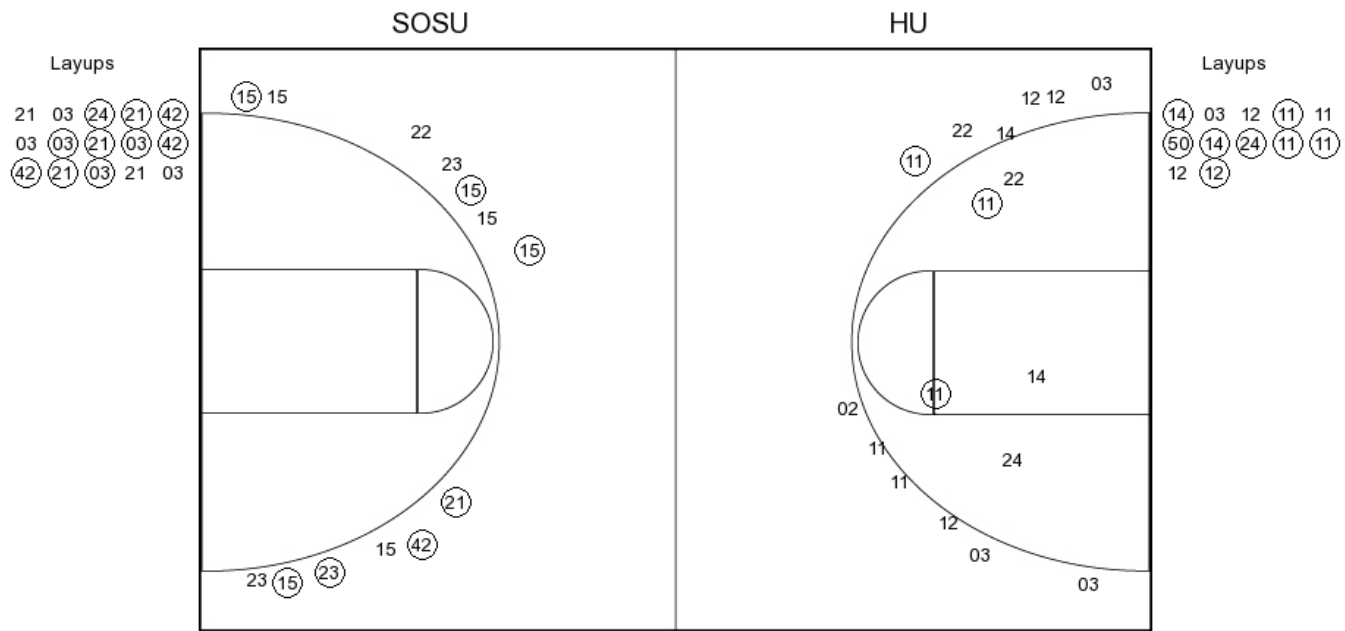
FG Made	11
FG Attempted	26
3PFG Made	7
3PFG Attempted	13

Southeastern Okla. vs Harding

OFFICIAL SHOT CHART

2/27/2016 at Searcy, Ark. (Rhodes-Reaves Field House)

PERIOD 2



SOSU PERIOD 2

FG Made	11
FG Attempted	30
3PFG Made	1
3PFG Attempted	14

HU PERIOD 2

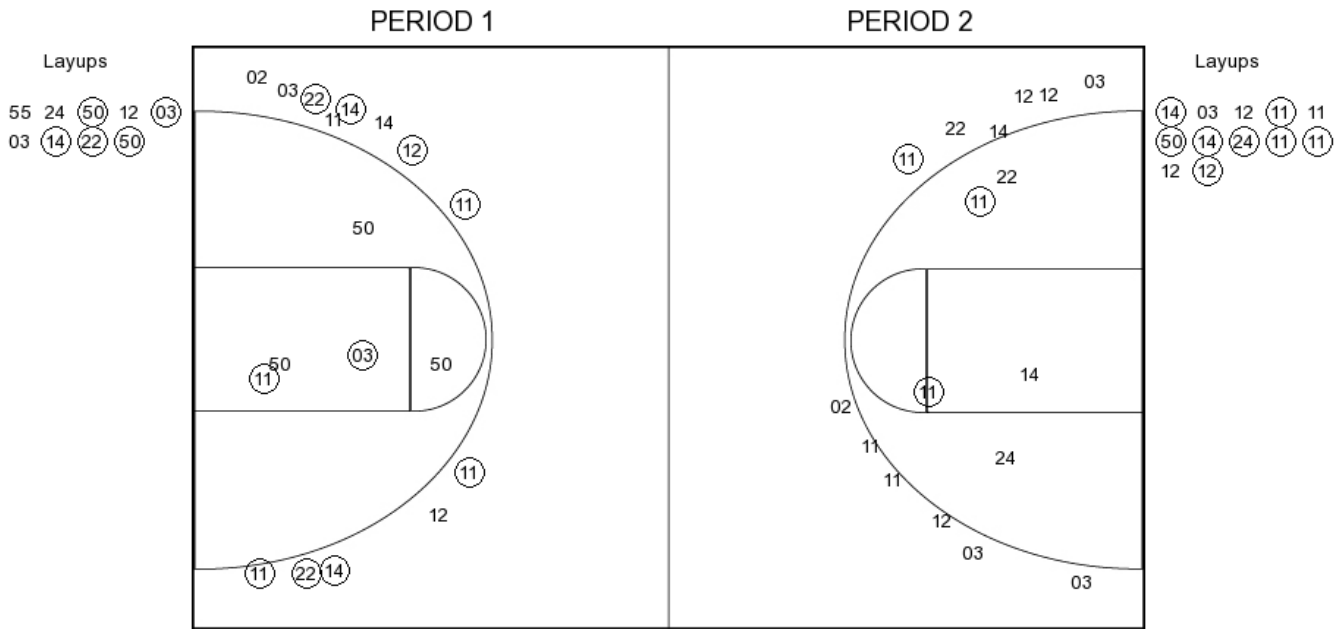
FG Made	17
FG Attempted	28
3PFG Made	7
3PFG Attempted	13

Southeastern Okla. vs Harding

OFFICIAL SHOT CHART

2/27/2016 at Searcy, Ark. (Rhodes-Reaves Field House)

Southeastern Okla.



SOSU PERIOD 1

FG Made	15
FG Attempted	29
3PFG Made	8
3PFG Attempted	13

SOSU PERIOD 2

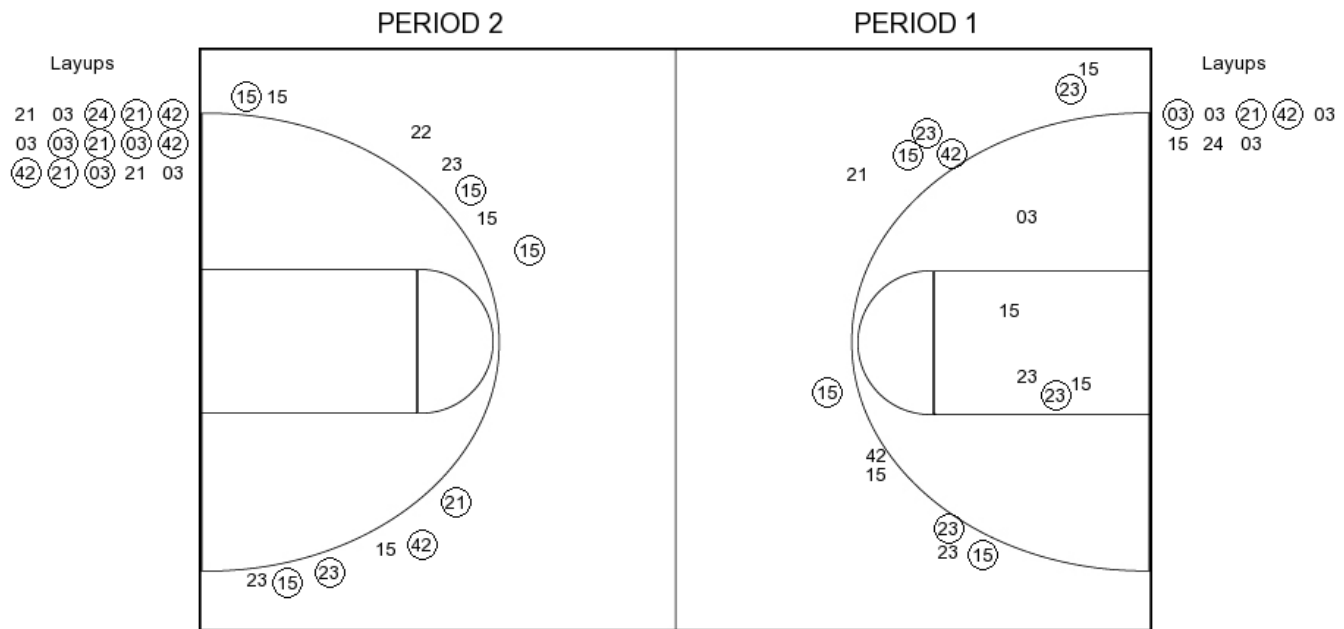
FG Made	11
FG Attempted	30
3PFG Made	1
3PFG Attempted	14

Southeastern Okla. vs Harding

OFFICIAL SHOT CHART

2/27/2016 at Searcy, Ark. (Rhodes-Reaves Field House)

Harding



HU PERIOD 1

FG Made	11
FG Attempted	26
3PFG Made	7
3PFG Attempted	13

HU PERIOD 2

FG Made	17
FG Attempted	28
3PFG Made	7
3PFG Attempted	13