

EAST CENTRAL AT HARDING



2/25/2016

Searcy, Ark. (Rhodes-Reaves Field House)

FINAL STATS

Harding

(16-9, 15-5 GAC)

80

East Central

(20-6, 16-4 GAC)

67

Start Time: 7:30 p.m.

Officials: K.B. Burdett Jr., Tim Fitzgerald and Alex Manuel

Attendance: 1432

Official Basketball Box Score -- Game Totals -- Final Statistics
East Central vs Harding
2/25/2016 7:30 p.m. at Searcy, Ark. (Rhodes-Reaves Field House)

East Central 67 - 20-6, 16-4 GAC

##	Player	S	Total			Rebounds			PF	TP	A	TO	Blk	Stl	Min
			FG-FGA	3PT	FG-FGA	FT-FTA	Off Reb	Def Reb							
04	REEVES,BRAXTON	f	4-15	2-9	0-0	1	4	5	0	10	4	0	1	2	37
05	DONZO,ISHMAEL	f	5-8	0-0	2-2	1	5	6	4	12	1	1	2	0	25
11	HALSEL,DONOVAN	g	0-2	0-1	0-0	0	0	0	1	0	0	0	0	0	10
12	THOMAS,STIRLING	g	9-20	2-7	5-6	1	0	1	1	25	3	1	0	1	40
22	HUDGINS,ALY	g	3-3	0-0	2-4	3	2	5	4	8	2	5	0	0	17
00	QUALLS,DALEN		0-1	0-1	0-0	0	0	0	0	0	0	0	0	0	6
01	WOODS,JAMEY		0-2	0-1	0-0	1	1	2	1	0	0	0	0	0	5
23	BROWN-WHITE,BEN		1-3	0-0	0-0	2	3	5	0	2	0	0	1	0	11
24	CANNON,BRETT		2-2	0-0	4-5	0	3	3	1	8	3	2	0	1	28
25	HILL,DERON		1-8	0-1	0-0	4	2	6	4	2	2	2	0	0	19
TEAM						1	3	4	0		0				
TOTALS			25-64	4-20	13-17	14	23	37	16	67	15	11	4	4	198

Deadball Rebounds: 0,2

FG %	1st Half:	13-33	39.4%	2nd Half:	12-31	38.7%	Game:	25-64	39.1%
3FG %	1st Half:	3-13	23.1%	2nd Half:	1-7	14.3%	Game:	4-20	20.0%
FT %	1st Half:	7-10	70.0%	2nd Half:	6-7	85.7%	Game:	13-17	76.5%

Harding 80 - 16-9, 15-5 GAC

##	Player	S	Total			Rebounds			PF	TP	A	TO	Blk	Stl	Min
			FG-FGA	3PT	FG-FGA	FT-FTA	Off Reb	Def Reb							
03	ANTHONY,REGGIE	g	3-6	0-0	2-4	1	3	4	3	8	3	2	0	2	20
15	GIBSON,JACOB	g	7-14	2-5	0-0	0	7	7	2	16	0	1	0	1	27
21	FRANCIS,WILL	g	10-14	3-6	3-4	4	2	6	3	26	4	2	0	1	35
23	MCNAIR,BLAKE	g	4-13	1-5	0-0	0	9	9	3	9	4	1	1	0	39
24	BURRELL,ANTOINE	f	3-4	0-0	0-0	1	1	2	2	6	1	0	1	0	16
02	BAILEY,MICAH		1-1	0-0	0-0	0	1	1	1	2	0	0	0	0	3
14	YATES,DAWSON		1-3	0-0	0-0	1	0	1	0	2	2	2	0	1	19
22	HUDSON,JOHN		0-0	0-0	0-0	0	0	0	1	0	0	0	0	0	8
42	ANDELKOVIC,STEFAN		3-8	1-4	1-3	0	5	5	1	8	1	0	1	0	24
50	EGGLESTON,BRADEN		1-2	0-0	1-2	0	0	0	1	3	3	0	0	0	9
TEAM						4	1	5	0		1				
TOTALS			33-65	7-20	7-13	11	29	40	17	80	18	9	3	5	200

Deadball Rebounds: 2,0

FG %	1st Half:	17-30	56.7%	2nd Half:	16-35	45.7%	Game:	33-65	50.8%
3FG %	1st Half:	4-10	40.0%	2nd Half:	3-10	30.0%	Game:	7-20	35.0%
FT %	1st Half:	3-6	50.0%	2nd Half:	4-7	57.1%	Game:	7-13	53.8%

Officials: K.B. Burdett Jr., Tim Fitzgerald and Alex Manuel
 Technical Fouls: East Central- None. Harding- None.
 Attendance: 1432

Score by periods	1st	2nd	Total
East Central	36	31	67
Harding	41	39	80

Points	In Paint	Off T/O	2nd Chance	Fast Break	Bench
ECU	32	6	13	2	12
HU	42	14	13	4	15

Last FG - ECU 2nd-00:14, HU 2nd-00:57.
 Largest lead - East Central by 2 1st-19:37; Harding by 16 2nd-00:57
 ECU led for 0:32. HU led for 37:31. Game was tied for 1:55.

Score tied - 3 times
 Lead changed - 1 times

Official Basketball Box Score -- Game Totals -- First Half Statistics
East Central vs Harding
2/25/2016 7:30 p.m. at Searcy, Ark. (Rhodes-Reaves Field House)

East Central, 36, 20-6, 16-4 GAC

##	Player	S	Total			Rebounds			PF	TP	A	T	O	Blk	Stl	Min	
			FG	F	G	3PT	FG	F									G
04	REEVES, BRAXTON	f	2	8		1	5		0	0	2	0	0	0	0	19	
05	DONZO, ISHMAEL	f	2	5		0	0		2	2	5	2	1	1	0	11	
11	HALSEL, DONOVAN	g	0	1		0	1		0	0	0	1	0	0	0	8	
12	THOMAS, STIRLING	g	5	11		2	5		0	0	0	1	14	1	0	20	
22	HUDGINS, ALY	g	2	2		0	0		2	2	4	2	6	1	3	11	
00	QUALLS, DALEN		0	1		0	1		0	0	0	0	0	0	0	3	
01	WOODS, JAMEY		0	0		0	0		0	0	0	0	0	0	0	0	
23	BROWN-WHITE, BEN		1	2		0	0		0	2	4	0	2	0	0	7	
24	CANNON, BRETT		0	0		0	0		1	1	1	0	1	0	0	10	
25	HILL, DERON		1	3		0	1		3	1	4	1	2	1	0	11	
TEAM									0	1	1	0		0			
Totals			13	33		3	13		7	36	21	7	36	7	5	1	100

FG % Half: 13-33 39.4%
 3FG % Half: 3-13 23.1%
 FT % Half: 7-10 70.0%

Harding, 41, 16-9, 15-5 GAC

##	Player	S	Total			Rebounds			PF	TP	A	T	O	Blk	Stl	Min	
			FG	F	G	3PT	FG	F									G
03	ANTHONY, REGGIE	g	1	2		0	0		2	2	0	2	1	0	2	7	
15	GIBSON, JACOB	g	3	4		1	1		2	7	1	2	0	1	0	8	
21	FRANCIS, WILL	g	7	10		3	5		1	19	3	1	2	1	0	17	
23	MCNAIR, BLAKE	g	1	5		0	2		0	2	6	0	2	2	0	19	
24	BURRELL, ANTOINE	f	2	2		0	0		1	4	1	1	0	0	0	9	
02	BAILEY, MICAH		1	1		0	0		1	2	1	1	0	0	0	3	
14	YATES, DAWSON		0	2		0	0		1	0	1	0	0	2	1	10	
22	HUDSON, JOHN		0	0		0	0		0	0	0	1	0	0	0	7	
42	ANDELKOVIC, STEFAN		2	4		0	2		0	4	2	0	0	0	0	14	
50	EGGLESTON, BRADEN		0	0		0	0		0	1	0	1	2	0	0	6	
TEAM									2	0	2	0		0			
Totals			17	30		4	10		9	41	17	9	41	9	4	0	100

FG % Half: 17-30 56.7%
 3FG % Half: 4-10 40.0%
 FT % Half: 3-6 50.0%

Officials: K.B. Burdett Jr., Tim Fitzgerald and Alex Manuel
 Technical Fouls: East Central- None, Harding- None.

Score by periods	1st	2nd	Total
East Central	36	31	67
Harding	41	39	80

Points	In Paint	Off T/O	2nd Chance	Fast Break	Bench
ECU	16	2	11	2	5
HU	22	10	4	2	7

Last FG - ECU 1st-00:01, HU 1st-01:07.
 ECU led for 0:32. HU led for 17:33. Game was tied for 1:55.

Score tied - 3 times
 Lead changed - 1 times

East Central vs Harding
2/25/2016; 7:30 p.m. at Searcy, Ark. (Rhodes-Reaves Field House)
Period 1 Play-By-Play

VISITORS: East Central	Time	Score	Margin	HOME: Harding
GOOD! JUMPER by THOMAS,STIRLING	19:37	0-2	V 2	
	19:22	2-2	T	GOOD! LAYUP by GIBSON,JACOB [PNT]
	19:05			FOUL by BURRELL,ANTOINE
GOOD! FT by DONZO,ISHMAEL	19:05	2-3	V 1	
GOOD! FT by DONZO,ISHMAEL	19:05	2-4	V 2	
FOUL by THOMAS,STIRLING	18:55			
	18:48	4-4	T	GOOD! LAYUP by BURRELL,ANTOINE [PNT]
	18:48			ASSIST by MCNAIR,BLAKE
TURNOVER by DONZO,ISHMAEL	18:36			
	18:36			STEAL by ANTHONY,REGGIE
	18:21	6-4	H 2	GOOD! LAYUP by FRANCIS,WILL [PNT]
FOUL by DONZO,ISHMAEL	18:21			
	18:21			MISSED FT by FRANCIS,WILL
REBOUND (DEF) by HUDGINS,ALY	18:21			
SUB IN: HILL,DERON	18:21			
SUB OUT: DONZO,ISHMAEL	18:21			
TURNOVER by HILL,DERON	18:07			
	18:05			STEAL by ANTHONY,REGGIE
	18:01	8-4	H 4	GOOD! LAYUP by ANTHONY,REGGIE [FB/PNT]
GOOD! LAYUP by HUDGINS,ALY [PNT]	17:46	8-6	H 2	
ASSIST by REEVES,BRAXTON	17:46			
FOUL by HILL,DERON	17:33			
FOUL by HALSEL,DONOVAN	17:12			
SUB IN: CANNON,BRETT	17:12			
SUB OUT: HALSEL,DONOVAN	17:12			
	17:01	11-6	H 5	GOOD! 3PTR by GIBSON,JACOB
	17:01			ASSIST by FRANCIS,WILL
TURNOVER by HUDGINS,ALY	16:48			
	16:48			STEAL by FRANCIS,WILL
	16:36	13-6	H 7	GOOD! JUMPER by MCNAIR,BLAKE
	16:36			ASSIST by FRANCIS,WILL
	16:22			FOUL by FRANCIS,WILL
TURNOVER by HUDGINS,ALY	16:17			
SUB IN: BROWN-WHITE,BEN	16:17			
SUB OUT: HUDGINS,ALY	16:17			
	16:07	15-6	H 9	GOOD! JUMPER by GIBSON,JACOB
	15:57			FOUL by GIBSON,JACOB
GOOD! FT by THOMAS,STIRLING	15:57	15-7	H 8	
GOOD! FT by THOMAS,STIRLING	15:57	15-8	H 7	
	15:46			TURNOVER by MCNAIR,BLAKE
STEAL by CANNON,BRETT	15:46			
	15:46			SUB IN: ANDELKOVIC,STEFAN
	15:46			SUB OUT: BURRELL,ANTOINE
GOOD! LAYUP by THOMAS,STIRLING [PNT]	15:27	15-10	H 5	
	14:58			MISSED LAYUP by ANTHONY,REGGIE
	14:58			REBOUND (OFF) by TEAM
	14:51			MISSED 3PTR by ANDELKOVIC,STEFAN
REBOUND (DEF) by HILL,DERON	14:51			
	14:38			FOUL by ANTHONY,REGGIE
MISSED 3PTR by REEVES,BRAXTON	14:35			
	14:35			REBOUND (DEF) by MCNAIR,BLAKE
	14:22	18-10	H 8	GOOD! 3PTR by FRANCIS,WILL
	14:22			ASSIST by ANTHONY,REGGIE

VISITORS: East Central	Time	Score	Margin	HOME: Harding
MISSED 3PTR by THOMAS,STIRLING	14:07			
	14:07			REBOUND (DEF) by ANDELKOVIC,STEFAN
	13:46			TURNOVER by FRANCIS,WILL
MISSED 3PTR by HILL,DERON	13:30			
	13:30			REBOUND (DEF) by MCNAIR,BLAKE
	13:09			MISSED JUMPER by GIBSON,JACOB
REBOUND (DEF) by BROWN-WHITE,BEN	13:09			
	13:00			FOUL by ANTHONY,REGGIE
GOOD! FT by CANNON,BRETT	13:00	18-11	H 7	
MISSED FT by CANNON,BRETT	13:00			
	13:00			REBOUND (DEF) by GIBSON,JACOB
SUB IN: HUDGINS,ALY	13:00			
SUB IN: DONZO,ISHMAEL	13:00			
SUB OUT: HILL,DERON	13:00			
SUB OUT: BROWN-WHITE,BEN	13:00			
	13:00			SUB IN: EGGLESTON,BRADEN
	13:00			SUB IN: HUDSON,JOHN
	13:00			SUB OUT: ANTHONY,REGGIE
	13:00			SUB OUT: FRANCIS,WILL
	12:46	20-11	H 9	GOOD! DUNK by ANDELKOVIC,STEFAN [PNT]
	12:46			ASSIST by EGGLESTON,BRADEN
FOUL by HUDGINS,ALY	12:46			
	12:46			MISSED FT by ANDELKOVIC,STEFAN
REBOUND (DEF) by DONZO,ISHMAEL	12:46			
	12:46			SUB IN: FRANCIS,WILL
	12:46			SUB OUT: GIBSON,JACOB
GOOD! 3PTR by THOMAS,STIRLING	12:25	20-14	H 6	
ASSIST by HUDGINS,ALY	12:25			
	11:57			MISSED 3PTR by MCNAIR,BLAKE
REBOUND (DEF) by CANNON,BRETT	11:57			
GOOD! LAYUP by DONZO,ISHMAEL [FB/PNT]	11:50	20-16	H 4	
ASSIST by CANNON,BRETT	11:50			
	11:33	23-16	H 7	GOOD! 3PTR by FRANCIS,WILL
	11:33			ASSIST by EGGLESTON,BRADEN
GOOD! 3PTR by THOMAS,STIRLING	11:14	23-19	H 4	
ASSIST by DONZO,ISHMAEL	11:14			
	11:03	25-19	H 6	GOOD! LAYUP by FRANCIS,WILL [PNT]
GOOD! LAYUP by HUDGINS,ALY [PNT]	10:46	25-21	H 4	
ASSIST by THOMAS,STIRLING	10:46			
	10:14			MISSED JUMPER by MCNAIR,BLAKE
REBOUND (DEF) by DONZO,ISHMAEL	10:14			
	10:13			FOUL by EGGLESTON,BRADEN
TIMEOUT MEDIA	10:11			
SUB IN: HALSEL,DONOVAN	10:11			
SUB OUT: CANNON,BRETT	10:11			
	10:11			SUB IN: YATES,DAWSON
	10:11			SUB IN: GIBSON,JACOB
	10:11			SUB IN: BAILEY,MICAH
	10:11			SUB OUT: EGGLESTON,BRADEN
	10:11			SUB OUT: FRANCIS,WILL
	10:11			SUB OUT: MCNAIR,BLAKE
GOOD! LAYUP by DONZO,ISHMAEL [PNT]	09:50	25-23	H 2	
SUB IN: QUALLS,DALEN	09:35			
SUB OUT: REEVES,BRAXTON	09:35			
	09:33			MISSED 3PTR by ANDELKOVIC,STEFAN
REBOUND (DEADB) by TEAM	09:33			
GOOD! JUMPER by THOMAS,STIRLING	09:14	25-25	T	
	09:02			FOUL by GIBSON,JACOB

VISITORS: East Central	Time	Score	Margin	HOME: Harding
	09:02			TURNOVER by GIBSON,JACOB
	09:02			SUB IN: MCNAIR,BLAKE
	09:02			SUB OUT: GIBSON,JACOB
MISSED 3PTR by QUALLS,DALEN	08:44			
REBOUND (OFF) by HUDGINS,ALY	08:44			
TURNOVER by HUDGINS,ALY	08:40			
	08:40			STEAL by YATES,DAWSON
	08:26	27-25	H 2	GOOD! LAYUP by BAILEY,MICAH [PNT]
MISSED 3PTR by THOMAS,STIRLING	08:10			
REBOUND (OFF) by HUDGINS,ALY	08:10			
	08:07			FOUL by BAILEY,MICAH
GOOD! FT by HUDGINS,ALY	08:07	27-26	H 1	
MISSED FT by HUDGINS,ALY	08:07			
REBOUND (OFF) by BROWN-WHITE,BEN	08:07			
SUB IN: REEVES,BRAXTON	08:07			
SUB IN: BROWN-WHITE,BEN	08:07			
SUB OUT: HALSEL,DONOVAN	08:07			
SUB OUT: DONZO,ISHMAEL	08:07			
MISSED 3PTR by REEVES,BRAXTON	08:00			
	08:00			REBOUND (DEF) by BAILEY,MICAH
	07:33			TURNOVER by YATES,DAWSON
TIMEOUT MEDIA	07:31			
	07:31			SUB IN: BURRELL,ANTOINE
	07:31			SUB IN: FRANCIS,WILL
	07:31			SUB OUT: BAILEY,MICAH
	07:31			SUB OUT: ANDELKOVIC,STEFAN
MISSED JUMPER by REEVES,BRAXTON	07:19			
	07:19			REBOUND (DEF) by MCNAIR,BLAKE
	06:54			MISSED 3PTR by MCNAIR,BLAKE
	06:54			REBOUND (OFF) by FRANCIS,WILL
	06:40	30-26	H 4	GOOD! 3PTR by FRANCIS,WILL
	06:40			ASSIST by YATES,DAWSON
MISSED JUMPER by BROWN-WHITE,BEN	06:14			
REBOUND (OFF) by HUDGINS,ALY	06:14			
	06:14			FOUL by HUDSON,JOHN
GOOD! FT by HUDGINS,ALY	06:14	30-27	H 3	
MISSED FT by HUDGINS,ALY	06:14			
	06:14			REBOUND (DEF) by FRANCIS,WILL
SUB IN: DONZO,ISHMAEL	06:14			
SUB IN: CANNON,BRETT	06:14			
SUB OUT: QUALLS,DALEN	06:14			
SUB OUT: BROWN-WHITE,BEN	06:14			
	05:49			MISSED JUMPER by MCNAIR,BLAKE
REBOUND (DEF) by TEAM	05:49			
SUB IN: HILL,DERON	05:48			
SUB OUT: HUDGINS,ALY	05:48			
	05:48			SUB IN: ANDELKOVIC,STEFAN
	05:48			SUB OUT: HUDSON,JOHN
MISSED LAYUP by DONZO,ISHMAEL	05:36			
REBOUND (OFF) by DONZO,ISHMAEL	05:36			
MISSED LAYUP by DONZO,ISHMAEL	05:34			
REBOUND (OFF) by REEVES,BRAXTON	05:34			
GOOD! LAYUP by REEVES,BRAXTON [PNT]	05:29	30-29	H 1	
ASSIST by REEVES,BRAXTON	05:29			
	05:04	32-29	H 3	GOOD! LAYUP by BURRELL,ANTOINE [PNT]
	05:04			ASSIST by MCNAIR,BLAKE
MISSED JUMPER by REEVES,BRAXTON	04:44			
	04:44			REBOUND (DEF) by FRANCIS,WILL

VISITORS: East Central	Time	Score	Margin	HOME: Harding
	04:37			MISSED 3PTR by FRANCIS,WILL
REBOUND (DEF) by DONZO,ISHMAEL	04:37			
MISSED JUMPER by THOMAS,STIRLING	04:27			
	04:27			REBOUND (DEF) by BURRELL,ANTOINE
	04:06	34-29	H 5	GOOD! LAYUP by FRANCIS,WILL [PNT]
MISSED LAYUP by THOMAS,STIRLING	03:53			
REBOUND (OFF) by HILL,DERON	03:53			
MISSED 3PTR by THOMAS,STIRLING	03:49			
REBOUND (OFF) by HILL,DERON	03:49			
GOOD! LAYUP by HILL,DERON [PNT]	03:45	34-31	H 3	
	03:27	36-31	H 5	GOOD! LAYUP by ANDELKOVIC,STEFAN [PNT]
	03:27			ASSIST by YATES,DAWSON
MISSED 3PTR by REEVES,BRAXTON	03:12			
	03:12			REBOUND (DEF) by MCNAIR,BLAKE
	02:58			MISSED LAYUP by YATES,DAWSON
	02:58			REBOUND (OFF) by YATES,DAWSON
	02:55			TIMEOUT MEDIA
SUB IN: HUDGINS,ALY	02:55			
SUB IN: HALSEL,DONOVAN	02:55			
SUB OUT: DONZO,ISHMAEL	02:55			
SUB OUT: CANNON,BRETT	02:55			
	02:55			SUB IN: EGGLESTON,BRADEN
	02:55			SUB OUT: BURRELL,ANTOINE
FOUL by HUDGINS,ALY	02:34			
	02:34	37-31	H 6	GOOD! FT by EGGLESTON,BRADEN
	02:34			MISSED FT by EGGLESTON,BRADEN
REBOUND (DEF) by DONZO,ISHMAEL	02:34			
SUB IN: DONZO,ISHMAEL	02:34			
SUB OUT: HUDGINS,ALY	02:34			
MISSED LAYUP by DONZO,ISHMAEL	02:22			
	02:22			REBOUND (DEF) by MCNAIR,BLAKE
	02:13			MISSED LAYUP by YATES,DAWSON
BLOCK by DONZO,ISHMAEL	02:13			
	02:13			REBOUND (OFF) by TEAM
	02:01			MISSED LAYUP by FRANCIS,WILL
REBOUND (DEF) by REEVES,BRAXTON	02:01			
MISSED 3PTR by HALSEL,DONOVAN	01:54			
	01:54			REBOUND (DEF) by ANDELKOVIC,STEFAN
FOUL by DONZO,ISHMAEL	01:36			
	01:36	38-31	H 7	GOOD! FT by FRANCIS,WILL
	01:36	39-31	H 8	GOOD! FT by FRANCIS,WILL
SUB IN: BROWN-WHITE,BEN	01:36			
SUB OUT: DONZO,ISHMAEL	01:36			
MISSED 3PTR by REEVES,BRAXTON	01:23			
	01:23			REBOUND (DEF) by MCNAIR,BLAKE
	01:07	41-31	H 10	GOOD! LAYUP by FRANCIS,WILL [PNT]
MISSED LAYUP by HILL,DERON	00:54			
REBOUND (OFF) by BROWN-WHITE,BEN	00:54			
GOOD! LAYUP by BROWN-WHITE,BEN [PNT]	00:52	41-33	H 8	
	00:26			MISSED 3PTR by FRANCIS,WILL
REBOUND (DEF) by BROWN-WHITE,BEN	00:26			
TIMEOUT 30SEC	00:19			
MISSED LAYUP by THOMAS,STIRLING	00:03			
REBOUND (OFF) by HILL,DERON	00:03			
GOOD! 3PTR by REEVES,BRAXTON	00:01	41-36	H 5	
ASSIST by HILL,DERON	00:00			

Period 1-only	In Paint	Off T/O	2nd Chance	Fast Break	Bench	****
ECU	16	2	11	2	5	Score tied - 2 times
HU	22	10	4	2	7	Lead changed - 0 times

Official Basketball Box Score -- Game Totals -- Second Half Statistics
East Central vs Harding
2/25/2016 7:30 p.m. at Searcy, Ark. (Rhodes-Reaves Field House)

East Central, 31, 20-6, 16-4 GAC

##	Player	S	Total			Rebounds			PF	TP	A	T	O	Blk	Stl	Min
			FG-FGA	3PT	FG-FGA	FT-FTA	Off Reb	Def Reb								
04	REEVES,BRAXTON	f	2-7	1-4	0-0	0	3	3	0	5	2	0	1	2	18	
05	DONZO,ISHMAEL	f	3-3	0-0	0-0	0	1	1	2	6	0	0	1	0	14	
11	HALSEL,DONOVAN	g	0-1	0-0	0-0	0	0	0	0	0	0	0	0	2		
12	THOMAS,STIRLING	g	4-9	0-2	3-4	1	0	1	0	11	2	1	0	1	20	
22	HUDGINS,ALY	g	1-1	0-0	0-0	0	1	1	2	2	1	2	0	0	6	
00	QUALLS,DALEN		0-0	0-0	0-0	0	0	0	0	0	0	0	0	3		
01	WOODS,JAMEY		0-2	0-1	0-0	1	1	2	1	0	0	0	0	5		
23	BROWN-WHITE,BEN		0-1	0-0	0-0	0	1	1	0	0	0	0	1	4		
24	CANNON,BRETT		2-2	0-0	3-3	0	2	2	1	7	2	2	0	18		
25	HILL,DERON		0-5	0-0	0-0	1	1	2	3	0	1	1	0	8		
TEAM						1	2	3	0		0					
Totals			12-31	1-7	6-7	4	12	16	9	31	8	6	3	3	98	

FG % Half: 12-31 38.7%
 3FG % Half: 1-7 23.1%
 FT % Half: 6-7 85.7%

Harding, 39, 16-9, 15-5 GAC

##	Player	S	Total			Rebounds			PF	TP	A	T	O	Blk	Stl	Min
			FG-FGA	3PT	FG-FGA	FT-FTA	Off Reb	Def Reb								
03	ANTHONY,REGGIE	g	2-4	0-0	2-4	1	3	4	1	6	2	2	0	0	13	
15	GIBSON,JACOB	g	4-10	1-4	0-0	0	6	6	0	9	0	0	0	1	19	
21	FRANCIS,WILL	g	3-4	0-1	1-1	3	0	3	2	7	2	1	0	0	18	
23	MCNAIR,BLAKE	g	3-8	1-3	0-0	0	3	3	3	7	2	0	1	0	20	
24	BURRELL,ANTOINE	f	1-2	0-0	0-0	1	0	1	1	2	1	0	1	0	7	
02	BAILEY,MICAH		0-0	0-0	0-0	0	0	0	0	0	0	0	0	0		
14	YATES,DAWSON		1-1	0-0	0-0	0	0	0	0	2	0	1	0	0	9	
22	HUDSON,JOHN		0-0	0-0	0-0	0	0	0	0	0	0	0	0	0	1	
42	ANDELKOVIC,STEFAN		1-4	1-2	1-2	0	3	3	1	4	1	0	1	0	10	
50	EGGLESTON,BRADEN		1-2	0-0	0-0	0	0	0	0	2	1	0	0	0	3	
TEAM						2	1	3	0		1					
Totals			16-35	3-10	4-7	7	16	23	8	39	9	5	3	1	100	

FG % Half: 16-35 45.7%
 3FG % Half: 3-10 40.0%
 FT % Half: 4-7 57.1%

Officials: K.B. Burdett Jr., Tim Fitzgerald and Alex Manuel
 Technical Fouls: East Central- None, Harding- None.

Score by periods	1st	2nd	Total
East Central	36	31	67
Harding	41	39	80

Points	In Paint	Off T/O	2nd 2nd Chance	Fast Break	Bench
ECU	16	4	2	0	7
HU	20	4	9	2	8

Last FG - ECU 2nd-00:14, HU 2nd-00:57.
 ECU led for 0:00. HU led for 19:58. Game was tied for 0:00.

Score tied - 0 times
 Lead changed - 0 times

East Central vs Harding
2/25/2016; 7:30 p.m. at Searcy, Ark. (Rhodes-Reaves Field House)
Period 2 Play-By-Play

VISITORS: East Central	Time	Score	Margin	HOME: Harding
MISSED LAYUP by THOMAS,STIRLING	19:51			
	19:51			BLOCK by MCNAIR,BLAKE
	19:51			REBOUND (DEF) by TEAM
	19:34	43-36	H 7	GOOD! LAYUP by GIBSON,JACOB [PNT]
	19:34			ASSIST by BURRELL,ANTOINE
MISSED JUMPER by HALSEL,DONOVAN	19:24			
	19:24			REBOUND (DEF) by GIBSON,JACOB
	19:14			MISSED 3PTR by FRANCIS,WILL
	19:14			REBOUND (OFF) by FRANCIS,WILL
	19:11	45-36	H 9	GOOD! LAYUP by FRANCIS,WILL [PNT]
TIMEOUT 30SEC	19:07			
MISSED LAYUP by THOMAS,STIRLING	18:45			
REBOUND (OFF) by THOMAS,STIRLING	18:45			
GOOD! LAYUP by DONZO,ISHMAEL [PNT]	18:30	45-38	H 7	
ASSIST by REEVES,BRAXTON	18:30			
	18:17			FOUL by ANTHONY,REGGIE
	18:17			TURNOVER by ANTHONY,REGGIE
SUB IN: CANNON,BRETT	18:17			
SUB OUT: HALSEL,DONOVAN	18:17			
GOOD! LAYUP by CANNON,BRETT [PNT]	18:02	45-40	H 5	
	17:50	47-40	H 7	GOOD! LAYUP by ANTHONY,REGGIE [PNT]
TURNOVER by HUDGINS,ALY	17:34			
SUB IN: HILL,DERON	17:34			
SUB OUT: HUDGINS,ALY	17:34			
	17:34			SUB IN: YATES,DAWSON
	17:34			SUB OUT: ANTHONY,REGGIE
	17:24			MISSED 3PTR by GIBSON,JACOB
	17:24			REBOUND (OFF) by FRANCIS,WILL
FOUL by HILL,DERON	17:18			
	16:54			TURNOVER by YATES,DAWSON
STEAL by THOMAS,STIRLING	16:54			
TURNOVER by THOMAS,STIRLING	16:54			
	16:43	49-40	H 9	GOOD! JUMPER by MCNAIR,BLAKE
GOOD! LAYUP by DONZO,ISHMAEL [PNT]	16:28	49-42	H 7	
ASSIST by CANNON,BRETT	16:28			
	16:05	51-42	H 9	GOOD! LAYUP by YATES,DAWSON [PNT]
	16:05			ASSIST by MCNAIR,BLAKE
GOOD! 3PTR by REEVES,BRAXTON	15:46	51-45	H 6	
ASSIST by HILL,DERON	15:46			
	15:34	53-45	H 8	GOOD! LAYUP by FRANCIS,WILL [PNT]
FOUL by CANNON,BRETT	15:24			
TURNOVER by CANNON,BRETT	15:24			
	15:21			TIMEOUT MEDIA
	15:21			SUB IN: ANDELKOVIC,STEFAN
	15:21			SUB OUT: BURRELL,ANTOINE
	15:11			MISSED 3PTR by GIBSON,JACOB
REBOUND (DEF) by DONZO,ISHMAEL	15:11			
MISSED JUMPER by HILL,DERON	14:52			
	14:52			REBOUND (DEF) by GIBSON,JACOB
	14:38			MISSED 3PTR by ANDELKOVIC,STEFAN
REBOUND (DEF) by REEVES,BRAXTON	14:38			
MISSED JUMPER by REEVES,BRAXTON	14:21			
	14:21			REBOUND (DEF) by ANDELKOVIC,STEFAN

VISITORS: East Central	Time	Score	Margin	HOME: Harding
	14:04			MISSED LAYUP by ANDELKOVIC,STEFAN
BLOCK by DONZO,ISHMAEL	14:04			
	14:03			REBOUND (OFF) by TEAM
SUB IN: WOODS,JAMEY	14:03			
SUB IN: BROWN-WHITE,BEN	14:03			
SUB OUT: REEVES,BRAXTON	14:03			
SUB OUT: HILL,DERON	14:03			
	13:57			MISSED LAYUP by GIBSON,JACOB
REBOUND (DEF) by TEAM	13:57			
MISSED LAYUP by BROWN-WHITE,BEN	13:34			
	13:34			REBOUND (DEF) by MCNAIR,BLAKE
	13:20	56-45	H 11	GOOD! 3PTR by GIBSON,JACOB
	13:20			ASSIST by ANDELKOVIC,STEFAN
GOOD! JUMPER by THOMAS,STIRLING	13:07	56-47	H 9	
	12:58			MISSED 3PTR by GIBSON,JACOB
REBOUND (DEF) by BROWN-WHITE,BEN	12:58			
MISSED 3PTR by WOODS,JAMEY	12:42			
	12:42			REBOUND (DEF) by GIBSON,JACOB
	12:33			MISSED 3PTR by MCNAIR,BLAKE
	12:33			REBOUND (OFF) by FRANCIS,WILL
	12:26	58-47	H 11	GOOD! LAYUP by FRANCIS,WILL [PNT]
FOUL by DONZO,ISHMAEL	12:26			
	12:26	59-47	H 12	GOOD! FT by FRANCIS,WILL
SUB IN: HUDGINS,ALY	12:26			
SUB IN: REEVES,BRAXTON	12:26			
SUB OUT: WOODS,JAMEY	12:26			
SUB OUT: DONZO,ISHMAEL	12:26			
	12:25			SUB IN: HUDSON,JOHN
	12:25			SUB OUT: GIBSON,JACOB
GOOD! LAYUP by HUDGINS,ALY [PNT]	12:21	59-49	H 10	
ASSIST by REEVES,BRAXTON	12:21			
	12:02			MISSED JUMPER by MCNAIR,BLAKE
REBOUND (DEF) by CANNON,BRETT	12:02			
GOOD! JUMPER by REEVES,BRAXTON	11:48	59-51	H 8	
ASSIST by CANNON,BRETT	11:48			
	11:45			TIMEOUT MEDIA
	11:45			SUB IN: BURRELL,ANTOINE
	11:45			SUB OUT: ANDELKOVIC,STEFAN
	11:29			MISSED 3PTR by MCNAIR,BLAKE
REBOUND (DEADB) by TEAM	11:29			
	11:26			FOUL by BURRELL,ANTOINE
SUB IN: HILL,DERON	11:26			
SUB OUT: BROWN-WHITE,BEN	11:26			
GOOD! LAYUP by CANNON,BRETT [PNT]	11:19	59-53	H 6	
ASSIST by THOMAS,STIRLING	11:19			
	11:19			FOUL by FRANCIS,WILL
GOOD! FT by CANNON,BRETT	11:19	59-54	H 5	
	11:19			SUB IN: GIBSON,JACOB
	11:19			SUB IN: ANTHONY,REGGIE
	11:19			SUB OUT: YATES,DAWSON
	11:19			SUB OUT: HUDSON,JOHN
	11:18			MISSED LAYUP by BURRELL,ANTOINE
BLOCK by REEVES,BRAXTON	11:18			
	11:17			REBOUND (OFF) by TEAM
	11:09			TURNOVER by FRANCIS,WILL
STEAL by REEVES,BRAXTON	11:08			
MISSED LAYUP by HILL,DERON	11:02			
	11:02			BLOCK by BURRELL,ANTOINE

VISITORS: East Central	Time	Score	Margin	HOME: Harding
	11:00			REBOUND (DEF) by ANTHONY,REGGIE
	10:44			MISSED LAYUP by GIBSON,JACOB
	10:44			REBOUND (OFF) by BURRELL,ANTOINE
	10:42	61-54	H 7	GOOD! LAYUP by BURRELL,ANTOINE [PNT]
SUB IN: DONZO,ISHMAEL	10:20			
SUB OUT: HUDGINS,ALY	10:20			
GOOD! LAYUP by THOMAS,STIRLING [PNT]	10:14	61-56	H 5	
	09:54	63-56	H 7	GOOD! JUMPER by GIBSON,JACOB
TURNOVER by HILL,DERON	09:44			
	09:42			STEAL by GIBSON,JACOB
FOUL by HILL,DERON	09:36			
SUB IN: WOODS,JAMEY	09:36			
SUB OUT: HILL,DERON	09:36			
	09:36			SUB IN: EGGLESTON,BRADEN
	09:36			SUB OUT: BURRELL,ANTOINE
	09:26			MISSED JUMPER by MCNAIR,BLAKE
REBOUND (DEF) by CANNON,BRETT	09:26			
	09:20			FOUL by FRANCIS,WILL
GOOD! FT by THOMAS,STIRLING	09:20	63-57	H 6	
GOOD! FT by THOMAS,STIRLING	09:20	63-58	H 5	
	09:20			SUB IN: YATES,DAWSON
	09:20			SUB OUT: FRANCIS,WILL
	08:55	65-58	H 7	GOOD! LAYUP by MCNAIR,BLAKE [PNT]
	08:55			ASSIST by EGGLESTON,BRADEN
	08:47			FOUL by MCNAIR,BLAKE
GOOD! DUNK by DONZO,ISHMAEL [PNT]	08:24	65-60	H 5	
ASSIST by THOMAS,STIRLING	08:24			
FOUL by DONZO,ISHMAEL	08:06			
	08:06	66-60	H 6	GOOD! FT by ANTHONY,REGGIE
	08:06			MISSED FT by ANTHONY,REGGIE
REBOUND (DEF) by WOODS,JAMEY	08:06			
SUB IN: HUDGINS,ALY	08:06			
SUB OUT: DONZO,ISHMAEL	08:06			
MISSED JUMPER by WOODS,JAMEY	07:52			
	07:52			REBOUND (DEF) by GIBSON,JACOB
FOUL by WOODS,JAMEY	07:50			
	07:50			TIMEOUT MEDIA
	07:36			MISSED LAYUP by EGGLESTON,BRADEN
	07:36			REBOUND (OFF) by ANTHONY,REGGIE
	07:29	68-60	H 8	GOOD! LAYUP by EGGLESTON,BRADEN [PNT]
	07:29			ASSIST by ANTHONY,REGGIE
MISSED 3PTR by REEVES,BRAXTON	07:15			
REBOUND (OFF) by WOODS,JAMEY	07:15			
FOUL by HUDGINS,ALY	07:04			
TURNOVER by HUDGINS,ALY	07:04			
	07:04			SUB IN: FRANCIS,WILL
	07:04			SUB OUT: YATES,DAWSON
	06:50			MISSED LAYUP by ANTHONY,REGGIE
REBOUND (DEF) by HUDGINS,ALY	06:50			
	06:43			FOUL by MCNAIR,BLAKE
	06:43			SUB IN: ANDELKOVIC,STEFAN
	06:43			SUB OUT: EGGLESTON,BRADEN
GOOD! JUMPER by THOMAS,STIRLING	06:38	68-62	H 6	
ASSIST by HUDGINS,ALY	06:38			
FOUL by HUDGINS,ALY	06:13			
	06:13			MISSED FT by ANDELKOVIC,STEFAN
	06:13			REBOUND (DEADB) by TEAM
	06:13	69-62	H 7	GOOD! FT by ANDELKOVIC,STEFAN

VISITORS: East Central	Time	Score	Margin	HOME: Harding
SUB IN: BROWN-WHITE,BEN	06:13			
SUB IN: HILL,DERON	06:13			
SUB OUT: HUDGINS,ALY	06:13			
SUB OUT: WOODS,JAMEY	06:13			
MISSED 3PTR by THOMAS,STIRLING	05:57			
	05:57			REBOUND (DEF) by ANTHONY,REGGIE
	05:49	72-62	H 10	GOOD! 3PTR by MCNAIR,BLAKE
	05:49			ASSIST by FRANCIS,WILL
MISSED LAYUP by HILL,DERON	05:31			
REBOUND (OFF) by HILL,DERON	05:31			
MISSED 3PTR by REEVES,BRAXTON	05:28			
	05:28			REBOUND (DEF) by ANDELKOVIC,STEFAN
	04:56			MISSED LAYUP by ANTHONY,REGGIE
BLOCK by BROWN-WHITE,BEN	04:56			
REBOUND (DEF) by HILL,DERON	04:55			
MISSED LAYUP by HILL,DERON	04:50			
	04:50			REBOUND (DEF) by MCNAIR,BLAKE
	04:45	74-62	H 12	GOOD! LAYUP by ANTHONY,REGGIE [FB/PNT]
	04:45			ASSIST by MCNAIR,BLAKE
	04:33			FOUL by ANDELKOVIC,STEFAN
GOOD! FT by CANNON,BRETT	04:33	74-63	H 11	
GOOD! FT by CANNON,BRETT	04:33	74-64	H 10	
SUB IN: DONZO,ISHMAEL	04:33			
SUB OUT: BROWN-WHITE,BEN	04:33			
	04:33			SUB IN: YATES,DAWSON
	04:33			SUB OUT: ANTHONY,REGGIE
	04:00			MISSED LAYUP by ANDELKOVIC,STEFAN
REBOUND (DEF) by TEAM	04:00			
TIMEOUT MEDIA	03:59			
	03:59			SUB IN: ANTHONY,REGGIE
	03:59			SUB OUT: YATES,DAWSON
MISSED LAYUP by THOMAS,STIRLING	03:46			
	03:46			BLOCK by ANDELKOVIC,STEFAN
REBOUND (OFF) by TEAM	03:46			
MISSED LAYUP by HILL,DERON	03:40			
	03:40			REBOUND (DEF) by MCNAIR,BLAKE
FOUL by HILL,DERON	03:22			
	03:22			MISSED FT by ANTHONY,REGGIE
	03:22			REBOUND (DEADB) by TEAM
	03:22	75-64	H 11	GOOD! FT by ANTHONY,REGGIE
SUB IN: QUALLS,DALEN	03:21			
SUB OUT: HILL,DERON	03:21			
MISSED 3PTR by THOMAS,STIRLING	03:13			
	03:13			REBOUND (DEF) by GIBSON,JACOB
	02:47			MISSED LAYUP by GIBSON,JACOB
REBOUND (DEF) by REEVES,BRAXTON	02:47			
TURNOVER by CANNON,BRETT	02:41			
	02:18	77-64	H 13	GOOD! JUMPER by GIBSON,JACOB
	02:18			ASSIST by FRANCIS,WILL
MISSED 3PTR by REEVES,BRAXTON	02:07			
	02:07			REBOUND (DEF) by ANTHONY,REGGIE
	01:38			MISSED LAYUP by MCNAIR,BLAKE
REBOUND (DEF) by REEVES,BRAXTON	01:38			
MISSED JUMPER by REEVES,BRAXTON	01:26			
	01:26			REBOUND (DEF) by GIBSON,JACOB
	00:57	80-64	H 16	GOOD! 3PTR by ANDELKOVIC,STEFAN
	00:57			ASSIST by ANTHONY,REGGIE
	00:49			FOUL by MCNAIR,BLAKE

VISITORS: East Central	Time	Score	Margin	HOME: Harding
GOOD! FT by THOMAS,STIRLING	00:49	80-65	H 15	
MISSED FT by THOMAS,STIRLING	00:49			
	00:49			REBOUND (DEF) by ANDELKOVIC,STEFAN
	00:18			TURNOVER by TEAM
GOOD! LAYUP by THOMAS,STIRLING [PNT]	00:14	80-67	H 13	
	00:07			TURNOVER by ANTHONY,REGGIE
STEAL by REEVES,BRAXTON	00:05			

East Central 67, Harding 80

Period 2-only	In Paint	Off T/O	2nd Chance	Fast Break	Bench	****
ECU	16	4	2	0	7	Score tied - 0 times
HU	20	4	9	2	8	Lead changed - 0 times

East Central vs Harding
2/25/2016; 7:30 p.m. at Searcy, Ark. (Rhodes-Reaves Field House)
Scoring/Runs Reference

Period 1			Period 2		
East Central	Score	Harding	East Central	Score	Harding
19:37, - THOMAS, JUMPER	2 2-0 -2		19:51 - THOMAS, LAYUP	X	
	2-2 0	GIBSON, LAYUP, - 19:22		36-43 7	GIBSON, LAYUP, - 19:34
19:05, - DONZO, FT	1 3-2 -1		19:24 - HALSEL, JUMPER	X	
19:05, - DONZO, FT	1 4-2 -2				X FRANCIS, 3PTR - 19:14
	4-4 0	BURRELL, LAYUP, - 18:48		36-45 9	2P FRANCIS, LAYUP, - 19:11
18:36, - DONZO TURN	TO		18:45 - THOMAS, LAYUP	X	
	4-6 2	FRANCIS, LAYUP, - 18:21	18:30, - DONZO, LAYUP	2P 38-45 7	
		FRANCIS, FT - 18:21			
18:07, - HILL TURN	TO				TO ANTHONY TURN - 18:17
	4-8 4	2PF ANTHONY, LAYUP, - 18:01	18:02, - CANNON, LAYUP	2P 40-45 5	
17:46, - HUDGINS, LAYUP	2P 6-8 2			40-47 7	2P ANTHONY, LAYUP, - 17:50
	6-11 5	3 GIBSON, 3PTR, - 17:01	17:34, - HUDGINS TURN	TO	
16:48, - HUDGINS TURN	TO				X GIBSON, 3PTR - 17:24 TO YATES TURN - 16:54
	6-13 7	2 MCNAIR, JUMPER, - 16:36	16:54, - THOMAS TURN	TO	
16:17, - HUDGINS TURN	TO			40-49 9	2 MCNAIR, JUMPER, - 16:43
	6-15 9	2 GIBSON, JUMPER, - 16:07	16:28, - DONZO, LAYUP	2P 42-49 7	
15:57, - THOMAS, FT	1 7-15 8			42-51 9	2P YATES, LAYUP, - 16:05
15:57, - THOMAS, FT	1 8-15 7		15:46, - REEVES, 3PTR	3 45-51 6	
		TO MCNAIR TURN - 15:46		45-53 8	2P FRANCIS, LAYUP, - 15:34
15:27, - THOMAS, LAYUP	2P 10-15 5		15:24, - CANNON TURN	TO	
		X ANTHONY, LAYUP - 14:58			X GIBSON, 3PTR - 15:11
		X ANDELKOVIC, 3PTR - 14:51	14:52 - HILL, JUMPER	X	
14:35 - REEVES, 3PTR	X				X ANDELKOVIC, 3PTR - 14:38
	10-18 8	3 FRANCIS, 3PTR, - 14:22	14:21 - REEVES, JUMPER	X	
14:07 - THOMAS, 3PTR	X				X ANDELKOVIC, LAYUP - 14:04
		TO FRANCIS TURN - 13:46			X GIBSON, LAYUP - 13:57
13:30 - HILL, 3PTR	X		13:34 - BROWN- WHITE, LAYUP	X	
		X GIBSON, JUMPER - 13:09		45-56 11	3 GIBSON, 3PTR, - 13:20
13:00, - CANNON, FT	1 11-18 7				
13:00 - CANNON, FT	X				

11:20₉ 2^P ANDELKOVIC,DUNK,-
 12:46
 ANDELKOVIC,FT -
 12:46

12:25,-
 ,THOMAS,3PTR 3 14-20
 6 X MCNAIR,3PTR - 11:57

11:50,-
 ,DONZO,LAYUP 2^{PF} 16-20
 4 X FRANCIS,3PTR,-,11:33

11:14,-
 ,THOMAS,3PTR 3 19-23
 4 FRANCIS,LAYUP,-
 19-25 2^P
 6 ,11:03

10:46,-
 ,HUDGINS,LAYUP 2^P 21-25
 4 X MCNAIR,JUMPER -
 10:14

09:50,-
 ,DONZO,LAYUP 2^P 23-25
 2 X ANDELKOVIC,3PTR -
 09:33

09:14,-
 ,THOMAS,JUMPER 2 25-25
 0 TO GIBSON TURN -,09:02

08:44 -
 QUALLS,3PTR X

08:40,-,HUDGINS
 TURN TO

25-27 2^P BAILEY,LAYUP,-,08:26
 2

08:10 -
 THOMAS,3PTR X

08:07,-
 ,HUDGINS,FT 1 26-27
 1

08:07 -
 HUDGINS,FT X

08:00 -
 REEVES,3PTR X

TO YATES TURN -,07:33

07:19 -
 REEVES,JUMPER X

X MCNAIR,3PTR - 06:54

26-30 3 FRANCIS,3PTR,-,06:40
 4

06:14 - BROWN-
 WHITE,JUMPER X

06:14,-
 ,HUDGINS,FT 1 27-30
 3

06:14 -
 HUDGINS,FT X

X MCNAIR,JUMPER -
 05:49

05:36 -
 DONZO,LAYUP X

05:34 -
 DONZO,LAYUP X

05:29,-
 ,REEVES,LAYUP 2^P 29-30
 1

13:07,-
 ,THOMAS,JUMPER 2 47-56
 9 X GIBSON,3PTR - 12:58

12:42 -
 WOODS,3PTR X

X MCNAIR,3PTR - 12:33

47-58 2^P FRANCIS,LAYUP,-
 11 ,12:26

47-59 1 FRANCIS,FT,-,12:26
 12

12:21,-
 ,HUDGINS,LAYUP 2^P 49-59
 10 X MCNAIR,JUMPER -
 12:02

11:48,-
 ,REEVES,JUMPER 2 51-59
 8 X MCNAIR,3PTR - 11:29

11:19,-
 ,CANNON,LAYUP 2^P 53-59
 6

11:19,-
 ,CANNON,FT 1 54-59
 5 X BURRELL,LAYUP -
 11:18

TO FRANCIS TURN -
 ,11:09

11:02 - HILL,LAYUP X

X GIBSON,LAYUP -
 10:44

54-61 2^P BURRELL,LAYUP,-
 7 ,10:42

10:14,-
 ,THOMAS,LAYUP 2^P 56-61
 5 GIBSON,JUMPER,-
 ,09:54

56-63 2
 7

09:44,-,HILL TURN TO

X MCNAIR,JUMPER -
 09:26

09:20,-
 ,THOMAS,FT 1 57-63
 6

09:20,-
 ,THOMAS,FT 1 58-63
 5 MCNAIR,LAYUP,-
 ,08:55

58-65 2^P
 7

08:24,-
 ,DONZO,DUNK 2^P 60-65
 5 ANTHONY,FT,-,08:06

60-66 1
 6 X ANTHONY,FT - 08:06

07:52 -
 WOODS,JUMPER X

X EGGLESTON,LAYUP -
 07:36

60-68 2^P EGGLESTON,LAYUP,-
 8 ,07:29

07:15 -
 REEVES,3PTR X

07:04,-,HUDGINS
 TURN TO

04:44 - REEVES,JUMPER X 29-32 3 2P BURRELL,LAYUP,- ,05:04

04:27 - THOMAS,JUMPER X FRANCIS,3PTR - 04:37

03:53 - THOMAS,LAYUP X 29-34 5 2P FRANCIS,LAYUP,- ,04:06

03:49 - THOMAS,3PTR X

03:45,-,HILL,LAYUP 2P 31-34 3 ANDELKOVIC,LAYUP,- ,03:27

03:12 - REEVES,3PTR X 31-36 5 2P

02:22 - DONZO,LAYUP X

01:54 - HALSEL,3PTR X

01:23 - REEVES,3PTR X 31-38 7 1 FRANCIS,FT,-,01:36
31-39 8 1 FRANCIS,FT,-,01:36

00:54 - HILL,LAYUP X 31-41 10 2P FRANCIS,LAYUP,- ,01:07

00:52,-,BROWN-WHITE,LAYUP 2P 33-41 8 FRANCIS,3PTR - 00:26

00:03 - THOMAS,LAYUP X

00:01,-,REEVES,3PTR 3 36-41 5

06:38,-,THOMAS,JUMPER 2 62-68 6 X ANTHONY,LAYUP - 06:50

05:57 - THOMAS,3PTR X 62-69 7 1 ANDELKOVIC,FT - 06:13
ANDELKOVIC,FT,- ,06:13

05:31 - HILL,LAYUP X 62-72 10 3 MCNAIR,3PTR,-,05:49

05:28 - REEVES,3PTR X

04:50 - HILL,LAYUP X ANTHONY,LAYUP - 04:56

04:33,-,CANNON,FT 1 62-74 12 2PF ANTHONY,LAYUP,- ,04:45

04:33,-,CANNON,FT 1 63-74 11 ANTHONY,FT - 03:22
1 64-74 10 ANTHONY,FT,-,03:22

03:46 - THOMAS,LAYUP X ANDELKOVIC,LAYUP - 04:00

03:40 - HILL,LAYUP X

03:13 - THOMAS,3PTR X 64-75 11 1 ANTHONY,FT - 03:22
ANTHONY,FT,-,03:22

02:41,-,CANNON TURN TO GIBSON,LAYUP - 02:47

02:07 - REEVES,3PTR X 64-77 13 2 GIBSON,JUMPER,- ,02:18

01:26 - REEVES,JUMPER X MCNAIR,LAYUP - 01:38

00:49,-,THOMAS,FT 1 64-80 16 3 ANDELKOVIC,3PTR,- ,00:57

00:49 - THOMAS,FT X

00:14,-,THOMAS,LAYUP 2P 65-80 15 TO TEAM TURN -,00:18

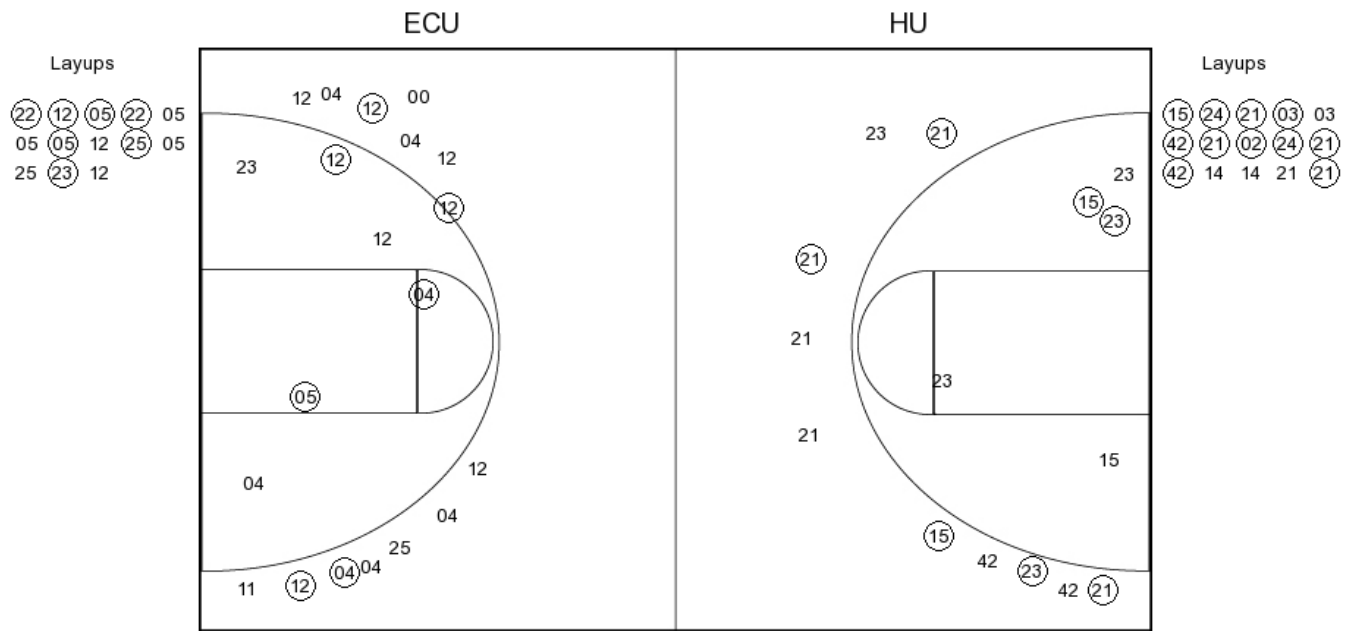
TO ANTHONY TURN - ,00:07

East Central vs Harding

OFFICIAL SHOT CHART

2/25/2016 at Searcy, Ark. (Rhodes-Reaves Field House)

PERIOD 1



ECU PERIOD 1

FG Made	13
FG Attempted	33
3PFG Made	3
3PFG Attempted	13

HU PERIOD 1

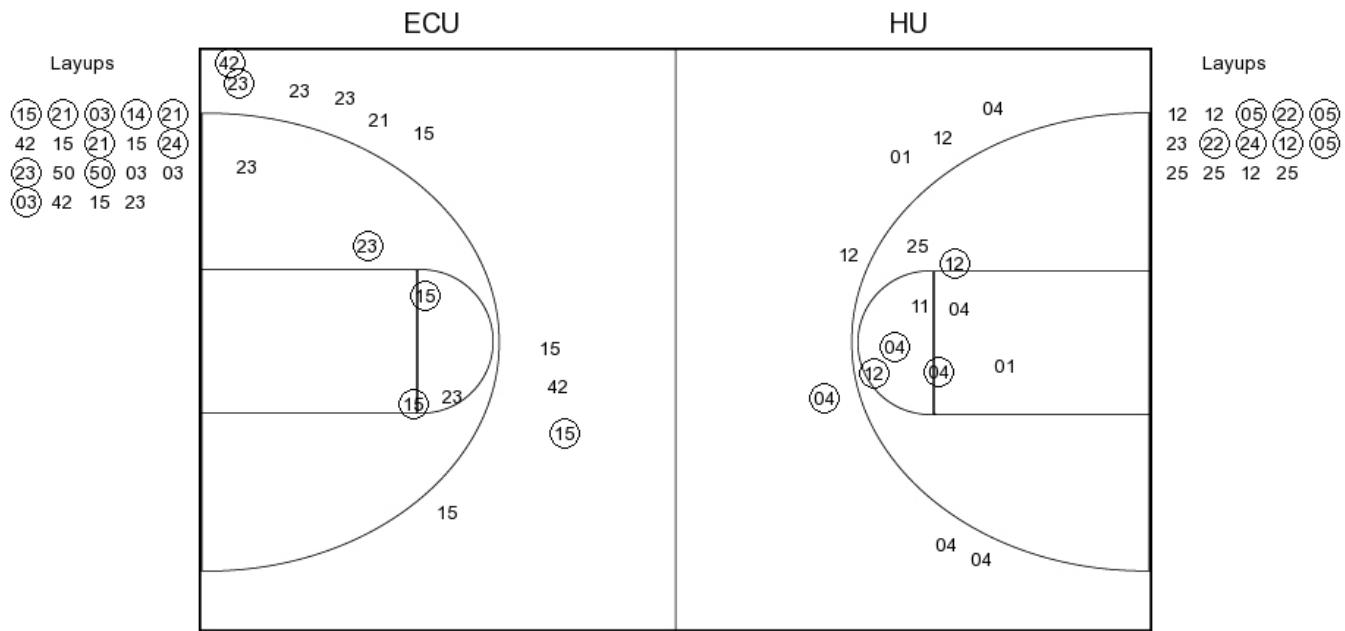
FG Made	17
FG Attempted	30
3PFG Made	4
3PFG Attempted	10

East Central vs Harding

OFFICIAL SHOT CHART

2/25/2016 at Searcy, Ark. (Rhodes-Reaves Field House)

PERIOD 2



ECU PERIOD 2

FG Made	12
FG Attempted	31
3PFG Made	1
3PFG Attempted	7

HU PERIOD 2

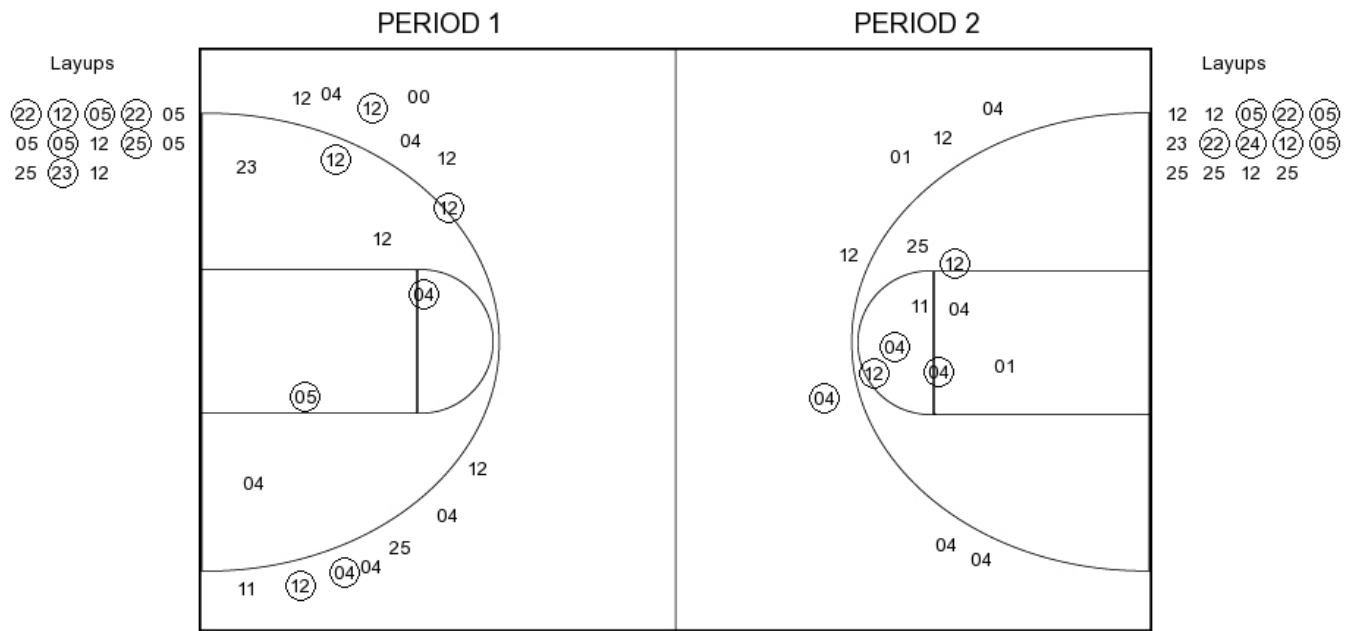
FG Made	16
FG Attempted	35
3PFG Made	3
3PFG Attempted	10

East Central vs Harding

OFFICIAL SHOT CHART

2/25/2016 at Searcy, Ark. (Rhodes-Reaves Field House)

East Central



ECU PERIOD 1

FG Made	13
FG Attempted	33
3PFG Made	3
3PFG Attempted	13

ECU PERIOD 2

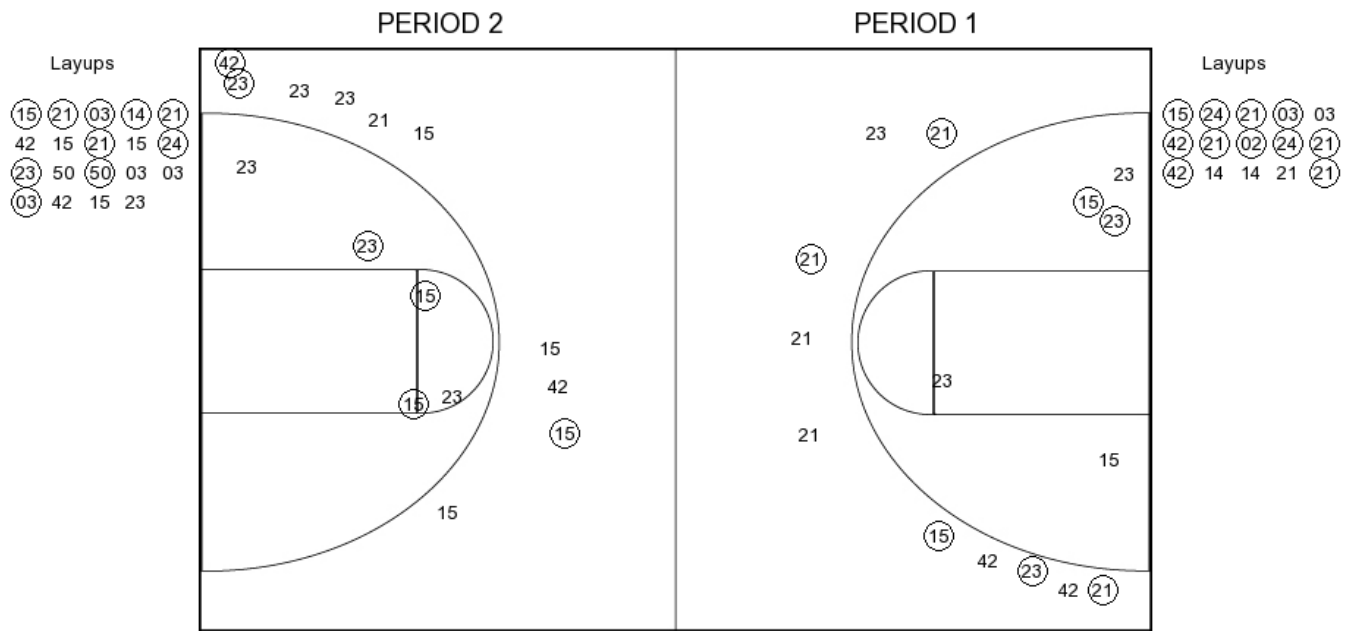
FG Made	12
FG Attempted	31
3PFG Made	1
3PFG Attempted	7

East Central vs Harding

OFFICIAL SHOT CHART

2/25/2016 at Searcy, Ark. (Rhodes-Reaves Field House)

Harding



HU PERIOD 1

FG Made	17
FG Attempted	30
3PFG Made	4
3PFG Attempted	10

HU PERIOD 2

FG Made	16
FG Attempted	35
3PFG Made	3
3PFG Attempted	10