

# ARKANSAS TECH AT HARDING



2/15/2016

Searcy, Ark. (Rhodes-Reaves Field House)

## FINAL STATS

**Harding**

*(13-9, 12-5 GAC)*

**79**

**Arkansas Tech**

*(13-10, 8-9 GAC)*

**76**

*Start Time: 7:30 p.m.*

*Officials: Brad Gaston, K.B. Burdett Jr., Tim Fitzgerald*

*Attendance: 0*

**Official Basketball Box Score -- Game Totals -- Final Statistics**  
**Arkansas Tech vs Harding**  
**2/15/2016 7:30 p.m. at Searcy, Ark. (Rhodes-Reaves Field House)**

**Arkansas Tech 76 - 13-10, 8-9 GAC**

##	Player	S	Total			Rebounds			PF	TP	A	TO	Blk	Stl	Min		
			FG-FGA	3PT	FG-FGA	FT-FTA	Off Reb	Def Reb								Tot Reb	
00	FLETCHER,BRYSON	g	1-3		1-1	0-0	1	2	3	1	3	1	0	0	1	24	
03	HAUGHTON,TYRONE	f	2-2		0-0	0-0	3	3	6	4	4	0	2	6	0	21	
10	CORLEY, TYLER	g	8-19		2-8	7-10	2	1	3	4	25	2	5	0	2	34	
13	WAYMAN,NICK	f	2-9		0-7	2-2	2	4	6	1	6	1	1	0	2	35	
15	GUILLORY,ANDREW	g	9-19		2-6	6-8	2	4	6	1	26	1	2	0	1	35	
02	CLINE,MASON		0-2		0-2	0-0	0	2	2	0	0	0	0	0	0	5	
12	LEE,FREDDY		1-3		1-2	4-5	0	3	3	2	7	3	1	1	3	26	
20	OWENS,JERRY		0-0		0-0	0-0	0	0	0	1	0	0	1	0	0	3	
30	MCKINNEY,DECHRISTOI		1-3		0-0	3-4	3	4	7	3	5	0	2	0	3	17	
TEAM							0	3	3	0		0					
TOTALS					24-60	6-26	22-29	13	26	39	17	76	8	14	7	12	200

Deadball Rebounds: 3,1

FG %	1st Half:	10-30	33.3%	2nd Half:	14-30	46.7%	Game:	24-60	40.0%
3FG %	1st Half:	4-13	30.8%	2nd Half:	2-13	15.4%	Game:	6-26	23.1%
FT %	1st Half:	11-16	68.8%	2nd Half:	11-13	84.6%	Game:	22-29	75.9%

**Harding 79 - 13-9, 12-5 GAC**

##	Player	S	Total			Rebounds			PF	TP	A	TO	Blk	Stl	Min		
			FG-FGA	3PT	FG-FGA	FT-FTA	Off Reb	Def Reb								Tot Reb	
03	ANTHONY,REGGIE	g	5-9		1-1	2-2	2	7	9	4	13	4	1	0	1	26	
15	GIBSON,JACOB	g	6-12		5-10	1-2	0	4	4	4	18	1	1	0	2	30	
21	FRANCIS,WILL	g	6-11		2-4	4-5	0	5	5	1	18	4	3	0	2	40	
23	MCNAIR,BLAKE	g	3-4		3-3	3-4	1	4	5	2	12	3	4	1	0	32	
50	EGGLESTON,BRADEN	f	1-2		0-0	0-2	1	1	2	0	2	1	0	0	0	6	
02	BAILEY,MICAH		2-6		0-0	0-0	2	1	3	3	4	0	0	0	1	6	
04	WARD,ZAC		0-1		0-1	0-0	0	0	0	1	0	0	1	0	0	9	
22	HUDSON,JOHN		0-2		0-2	0-0	0	1	1	1	0	1	2	0	0	11	
24	BURRELL,ANTOINE		2-2		0-0	2-2	0	0	0	2	6	2	1	0	0	9	
42	ANDELKOVIC,STEFAN		3-11		0-3	0-0	0	2	2	3	6	2	2	0	0	31	
TEAM							2	1	3	0		1					
TOTALS					28-60	11-24	12-17	8	26	34	21	79	18	16	1	6	200

Deadball Rebounds: 2,1

FG %	1st Half:	13-32	40.6%	2nd Half:	15-28	53.6%	Game:	28-60	46.7%
3FG %	1st Half:	4-12	33.3%	2nd Half:	7-12	58.3%	Game:	11-24	45.8%
FT %	1st Half:	3-6	50.0%	2nd Half:	9-11	81.8%	Game:	12-17	70.6%

Officials: Brad Gaston, K.B. Burdett Jr., Tim Fitzgerald

Technical Fouls: Arkansas Tech- None. Harding- None.

Attendance: 0

Score by periods	1st	2nd	Total
Arkansas Tech	35	41	76
Harding	33	46	79

Points	In Paint	Off T/O	2nd 2nd Chance	Fast Fast Break	Bench
ATU-M	36	19	13	8	12
HU	30	26	13	2	16

Last FG - ATU-M 2nd-00:48, HU 2nd-01:48.

Largest lead - Arkansas Tech by 3 1st-19:39; Harding by 14 1st-13:04

ATU-M led for 3:32. HU led for 35:24. Game was tied for 0:42.

Score tied - 2 times  
Lead changed - 7 times

**Official Basketball Box Score -- Game Totals -- First Half Statistics**  
**Arkansas Tech vs Harding**  
**2/15/2016 7:30 p.m. at Searcy, Ark. (Rhodes-Reaves Field House)**

**Arkansas Tech, 35, 13-10, 8-9 GAC**

##	Player	S	Total			Rebounds			PF	TP	A	T	O	Blk	Stl	Min
			FG-FGA	3PT FG-FGA	FT-FTA	Off Reb	Def Reb	Tot Reb								
00	FLETCHER, BRYSON	g	1-3	1-1	0-0	0	0	0	1	3	0	0	0	1	11	
03	HAUGHTON, TYRONE	f	2-2	0-0	0-0	2	1	3	1	4	0	1	5	0	10	
10	CORLEY, TYLER	g	2-7	1-3	1-3	2	1	3	1	6	2	2	0	1	16	
13	WAYMAN, NICK	f	0-4	0-4	2-2	2	1	3	1	2	0	0	0	0	15	
15	GUILLORY, ANDREW	g	4-10	2-4	4-6	2	4	6	0	14	1	1	0	0	18	
02	CLINE, MASON		0-1	0-1	0-0	0	1	1	0	0	0	0	0	0	3	
12	LEE, FREDDY		0-1	0-0	2-3	0	1	1	1	2	3	1	1	1	12	
20	OWENS, JERRY		0-0	0-0	0-0	0	0	0	1	0	0	1	0	0	3	
30	MCKINNEY, DECHRISTO		1-2	0-0	2-2	3	4	7	1	4	0	1	0	2	12	
TEAM						0	1	1	0		0					
Totals			10-30	4-13	11-16	11	14	25	7	35	6	7	6	5	100	

FG % Half: 10-30 33.3%  
 3FG % Half: 4-13 30.8%  
 FT % Half: 11-16 68.8%

**Harding, 33, 13-9, 12-5 GAC**

##	Player	S	Total			Rebounds			PF	TP	A	T	O	Blk	Stl	Min
			FG-FGA	3PT FG-FGA	FT-FTA	Off Reb	Def Reb	Tot Reb								
03	ANTHONY, REGGIE	g	1-3	0-0	2-2	1	4	5	2	4	2	0	0	0	10	
15	GIBSON, JACOB	g	3-6	3-6	1-2	0	1	1	2	10	1	0	0	2	13	
21	FRANCIS, WILL	g	3-4	1-2	0-0	0	4	4	1	7	0	2	0	0	20	
23	MCNAIR, BLAKE	g	0-1	0-0	0-0	0	1	1	2	0	3	1	1	0	12	
50	EGGLESTON, BRADEN	f	1-2	0-0	0-2	1	1	2	0	2	1	0	0	0	6	
02	BAILEY, MICAH		2-6	0-0	0-0	2	1	3	3	4	0	0	0	1	6	
04	WARD, ZAC		0-1	0-1	0-0	0	0	0	1	0	0	1	0	0	9	
22	HUDSON, JOHN		0-1	0-1	0-0	0	0	0	0	0	1	1	0	0	7	
24	BURRELL, ANTOINE		1-1	0-0	0-0	0	0	0	0	2	0	1	0	0	2	
42	ANDELKOVIC, STEFAN		2-7	0-2	0-0	0	0	0	1	4	1	0	0	0	15	
TEAM						2	0	2	0		0					
Totals			13-32	4-12	3-6	6	12	18	12	33	9	6	1	3	100	

FG % Half: 13-32 40.6%  
 3FG % Half: 4-12 33.3%  
 FT % Half: 3-6 50.0%

Officials: Brad Gaston, K.B. Burdett Jr., Tim Fitzgerald  
 Technical Fouls: Arkansas Tech- None. Harding- None.

Score by periods	1st	2nd	Total
Arkansas Tech	35	41	76
Harding	33	46	79

Points	In Paint	Off T/O	2nd Chance	Fast Break	Bench
ATU-M	12	8	9	4	6
HU	18	13	8	2	10

Last FG - ATU-M 1st-00:27, HU 1st-01:20.  
 ATU-M led for 3:01. HU led for 15:55. Game was tied for 0:42.

Score tied - 2 times  
 Lead changed - 6 times

**Arkansas Tech vs Harding**  
**2/15/2016; 7:30 p.m. at Searcy, Ark. (Rhodes-Reaves Field House)**  
**Period 1 Play-By-Play**

VISITORS: Arkansas Tech	Time	Score	Margin	HOME: Harding
MISSED LAYUP by CORLEY, TYLER	19:43			
	19:43			BLOCK by MCNAIR, BLAKE
REBOUND (OFF) by CORLEY, TYLER	19:41			
GOOD! 3PTR by GUILLORY, ANDREW	19:39	0-3	V 3	
ASSIST by CORLEY, TYLER	19:39			
FOUL by HAUGHTON, TYRONE	19:25			
	19:25			MISSED FT by EGGLESTON, BRADEN
	19:25			REBOUND (DEADB) by TEAM
	19:25			MISSED FT by EGGLESTON, BRADEN
REBOUND (DEF) by HAUGHTON, TYRONE	19:25			
MISSED LAYUP by GUILLORY, ANDREW	18:59			
	18:59			REBOUND (DEF) by EGGLESTON, BRADEN
	18:41			MISSED LAYUP by ANTHONY, REGGIE
	18:41			REBOUND (OFF) by EGGLESTON, BRADEN
	18:39	2-3	V 1	GOOD! TIPIN by EGGLESTON, BRADEN [PNT]
MISSED 3PTR by CORLEY, TYLER	18:23			
	18:23			REBOUND (DEF) by ANTHONY, REGGIE
	18:15	4-3	H 1	GOOD! LAYUP by FRANCIS, WILL [PNT]
	18:15			ASSIST by EGGLESTON, BRADEN
MISSED 3PTR by WAYMAN, NICK	17:52			
	17:52			REBOUND (DEF) by ANTHONY, REGGIE
	17:43	7-3	H 4	GOOD! 3PTR by FRANCIS, WILL
	17:43			ASSIST by ANTHONY, REGGIE
	17:27			FOUL by MCNAIR, BLAKE
MISSED FT by CORLEY, TYLER	17:27			
REBOUND (DEADB) by TEAM	17:27			
GOOD! FT by CORLEY, TYLER	17:27	7-4	H 3	
SUB IN: MCKINNEY, DECHRISTON	17:27			
SUB OUT: HAUGHTON, TYRONE	17:27			
	17:05	10-4	H 6	GOOD! 3PTR by GIBSON, JACOB
	17:05			ASSIST by MCNAIR, BLAKE
	16:49			FOUL by GIBSON, JACOB
MISSED JUMPER by GUILLORY, ANDREW	16:36			
	16:36			REBOUND (DEF) by ANTHONY, REGGIE
	16:25			MISSED 3PTR by GIBSON, JACOB
REBOUND (DEF) by MCKINNEY, DECHRISTON	16:25			
MISSED LAYUP by FLETCHER, BRYSON	15:57			
	15:57			REBOUND (DEF) by GIBSON, JACOB
	15:47	12-4	H 8	GOOD! LAYUP by ANTHONY, REGGIE [PNT]
	15:47			ASSIST by GIBSON, JACOB
TIMEOUT 30SEC	15:46			
TIMEOUT MEDIA	15:46			
	15:35			FOUL by MCNAIR, BLAKE
GOOD! FT by GUILLORY, ANDREW	15:35	12-5	H 7	
GOOD! FT by GUILLORY, ANDREW	15:35	12-6	H 6	
SUB IN: OWENS, JERRY	15:35			
SUB IN: LEE, FREDDY	15:35			
SUB OUT: FLETCHER, BRYSON	15:35			
SUB OUT: WAYMAN, NICK	15:35			
	15:35			SUB IN: ANDELKOVIC, STEFAN
	15:35			SUB OUT: MCNAIR, BLAKE
	15:18			MISSED LAYUP by EGGLESTON, BRADEN
REBOUND (DEF) by MCKINNEY, DECHRISTON	15:18			

VISITORS: Arkansas Tech	Time	Score	Margin	HOME: Harding
MISSED JUMPER by GUILLORY,ANDREW	14:49			
	14:49			REBOUND (DEF) by ANTHONY,REGGIE
FOUL by OWENS,JERRY	14:30			
	14:30	13-6	H 7	GOOD! FT by ANTHONY,REGGIE
	14:30	14-6	H 8	GOOD! FT by ANTHONY,REGGIE
	14:30			SUB IN: HUDSON,JOHN
	14:30			SUB OUT: EGGLESTON,BRADEN
TURNOVER by OWENS,JERRY	14:17			
	14:17			STEAL by GIBSON,JACOB
	14:09			MISSED 3PTR by GIBSON,JACOB
	14:09			REBOUND (OFF) by ANTHONY,REGGIE
FOUL by LEE,FREDDY	14:05			
SUB IN: FLETCHER,BRYSON	14:05			
SUB OUT: GUILLORY,ANDREW	14:05			
	14:02	16-6	H 10	GOOD! JUMPER by FRANCIS,WILL [PNT]
	14:02			ASSIST by ANTHONY,REGGIE
	13:38			FOUL by ANTHONY,REGGIE
TURNOVER by LEE,FREDDY	13:21			
	13:04	19-6	H 13	GOOD! 3PTR by GIBSON,JACOB
	13:04			ASSIST by HUDSON,JOHN
FOUL by MCKINNEY,DECHRISTON	13:04			
	13:04	20-6	H 14	GOOD! FT by GIBSON,JACOB
SUB IN: WAYMAN,NICK	13:04			
SUB IN: HAUGHTON,TYRONE	13:04			
SUB IN: GUILLORY,ANDREW	13:04			
SUB OUT: OWENS,JERRY	13:04			
SUB OUT: MCKINNEY,DECHRISTON	13:04			
SUB OUT: CORLEY,TYLER	13:04			
MISSED JUMPER by LEE,FREDDY	12:49			
REBOUND (OFF) by WAYMAN,NICK	12:49			
	12:47			FOUL by GIBSON,JACOB
	12:47			SUB IN: WARD,ZAC
	12:47			SUB OUT: GIBSON,JACOB
MISSED 3PTR by CORLEY,TYLER	12:29			
REBOUND (OFF) by GUILLORY,ANDREW	12:29			
GOOD! LAYUP by GUILLORY,ANDREW [PNT]	12:25	20-8	H 12	
	12:07			MISSED 3PTR by FRANCIS,WILL
REBOUND (DEF) by GUILLORY,ANDREW	12:07			
MISSED 3PTR by WAYMAN,NICK	11:54			
	11:54			REBOUND (DEF) by FRANCIS,WILL
	11:33			TURNOVER by WARD,ZAC
TIMEOUT MEDIA	11:33			
GOOD! 3PTR by FLETCHER,BRYSON	11:12	20-11	H 9	
ASSIST by GUILLORY,ANDREW	11:12			
	10:55			MISSED LAYUP by ANTHONY,REGGIE
BLOCK by HAUGHTON,TYRONE	10:55			
	10:54			REBOUND (OFF) by TEAM
	10:49	22-11	H 11	GOOD! LAYUP by ANDELKOVIC,STEFAN [PNT]
	10:34			FOUL by ANTHONY,REGGIE
GOOD! FT by LEE,FREDDY	10:34	22-12	H 10	
GOOD! FT by LEE,FREDDY	10:34	22-13	H 9	
SUB IN: CLINE,MASON	10:34			
SUB IN: MCKINNEY,DECHRISTON	10:34			
SUB OUT: HAUGHTON,TYRONE	10:34			
SUB OUT: FLETCHER,BRYSON	10:34			
	10:34			SUB IN: BAILEY,MICAH
	10:34			SUB OUT: ANTHONY,REGGIE
	10:21			MISSED 3PTR by HUDSON,JOHN

VISITORS: Arkansas Tech	Time	Score	Margin	HOME: Harding
	10:21			REBOUND (OFF) by BAILEY,MICAH
	10:19			MISSED LAYUP by BAILEY,MICAH
REBOUND (DEF) by CLINE,MASON	10:19			
MISSED 3PTR by CLINE,MASON	10:03			
	10:03			REBOUND (DEF) by BAILEY,MICAH
	09:54			TURNOVER by FRANCIS,WILL
STEAL by MCKINNEY,DECHRISTON	09:53			
GOOD! 3PTR by GUILLORY,ANDREW	09:33	22-16	H 6	
ASSIST by LEE,FREDDY	09:33			
	09:17			TURNOVER by HUDSON,JOHN
STEAL by MCKINNEY,DECHRISTON	09:16			
MISSED 3PTR by GUILLORY,ANDREW	09:01			
REBOUND (OFF) by WAYMAN,NICK	09:01			
	08:52			FOUL by WARD,ZAC
MISSED FT by LEE,FREDDY	08:52			
	08:52			REBOUND (DEADB) by TEAM
FOUL by WAYMAN,NICK	08:50			
SUB IN: CORLEY,TYLER	08:50			
SUB OUT: LEE,FREDDY	08:50			
	08:33			MISSED 3PTR by WARD,ZAC
REBOUND (DEF) by MCKINNEY,DECHRISTON	08:33			
	08:30			FOUL by BAILEY,MICAH
GOOD! FT by MCKINNEY,DECHRISTON	08:30	22-17	H 5	
GOOD! FT by MCKINNEY,DECHRISTON	08:30	22-18	H 4	
SUB IN: FLETCHER,BRYSON	08:30			
SUB OUT: GUILLORY,ANDREW	08:30			
	08:30			SUB IN: MCNAIR,BLAKE
	08:30			SUB OUT: HUDSON,JOHN
	08:07			MISSED 3PTR by ANDELKOVIC,STEFAN
	08:07			REBOUND (OFF) by BAILEY,MICAH
	08:05	24-18	H 6	GOOD! LAYUP by BAILEY,MICAH [PNT]
TURNOVER by CORLEY,TYLER	07:51			
	07:50			STEAL by BAILEY,MICAH
	07:47	26-18	H 8	GOOD! LAYUP by BAILEY,MICAH [FB/PNT]
TIMEOUT 30SEC	07:44			
TIMEOUT MEDIA	07:44			
TURNOVER by MCKINNEY,DECHRISTON	07:39			
	07:24	28-18	H 10	GOOD! LAYUP by ANDELKOVIC,STEFAN [PNT]
	07:24			ASSIST by MCNAIR,BLAKE
FOUL by CORLEY,TYLER	07:11			
TURNOVER by CORLEY,TYLER	07:11			
SUB IN: LEE,FREDDY	07:11			
SUB IN: GUILLORY,ANDREW	07:11			
SUB IN: HAUGHTON,TYRONE	07:11			
SUB OUT: CLINE,MASON	07:11			
SUB OUT: FLETCHER,BRYSON	07:11			
SUB OUT: MCKINNEY,DECHRISTON	07:11			
	06:59			MISSED LAYUP by BAILEY,MICAH
BLOCK by HAUGHTON,TYRONE	06:59			
REBOUND (DEF) by LEE,FREDDY	06:57			
GOOD! 3PTR by CORLEY,TYLER	06:52	28-21	H 7	
ASSIST by LEE,FREDDY	06:52			
	06:31			MISSED JUMPER by MCNAIR,BLAKE
REBOUND (DEF) by WAYMAN,NICK	06:31			
GOOD! LAYUP by CORLEY,TYLER [PNT]	06:23	28-23	H 5	
	06:07			MISSED JUMPER by ANDELKOVIC,STEFAN
REBOUND (DEADB) by TEAM	06:07			
	06:06			FOUL by ANDELKOVIC,STEFAN

VISITORS: Arkansas Tech	Time	Score	Margin	HOME: Harding
GOOD! FT by GUILLORY,ANDREW	06:06	28-24	H 4	
MISSED FT by GUILLORY,ANDREW	06:06			
	06:06			REBOUND (DEF) by FRANCIS,WILL
	06:06			SUB IN: EGGLESTON,BRADEN
	06:06			SUB IN: HUDSON,JOHN
	06:06			SUB IN: GIBSON,JACOB
	06:06			SUB OUT: WARD,ZAC
	06:06			SUB OUT: ANDELKOVIC,STEFAN
	06:06			SUB OUT: MCNAIR,BLAKE
	05:58			MISSED LAYUP by BAILEY,MICAH
BLOCK by HAUGHTON,TYRONE	05:58			
REBOUND (DEF) by TEAM	05:56			
	05:37			FOUL by BAILEY,MICAH
GOOD! FT by GUILLORY,ANDREW	05:37	28-25	H 3	
MISSED FT by GUILLORY,ANDREW	05:37			
	05:37			REBOUND (DEF) by FRANCIS,WILL
	05:19			MISSED LAYUP by BAILEY,MICAH
BLOCK by HAUGHTON,TYRONE	05:19			
REBOUND (DEF) by GUILLORY,ANDREW	05:17			
GOOD! DUNK by HAUGHTON,TYRONE [FB/PNT]	05:13	28-27	H 1	
ASSIST by LEE,FREDDY	05:13			
	05:10			SUB IN: ANDELKOVIC,STEFAN
	05:10			SUB OUT: EGGLESTON,BRADEN
	04:59			MISSED LAYUP by ANDELKOVIC,STEFAN
REBOUND (DEF) by CORLEY,TYLER	04:59			
	04:41			FOUL by BAILEY,MICAH
GOOD! FT by WAYMAN,NICK	04:41	28-28	T	
GOOD! FT by WAYMAN,NICK	04:41	28-29	V 1	
SUB IN: MCKINNEY,DECHRISTON	04:41			
SUB OUT: HAUGHTON,TYRONE	04:41			
	04:41			SUB IN: BURRELL,ANTOINE
	04:41			SUB IN: MCNAIR,BLAKE
	04:41			SUB OUT: BAILEY,MICAH
	04:41			SUB OUT: HUDSON,JOHN
	04:28	30-29	H 1	GOOD! LAYUP by BURRELL,ANTOINE [PNT]
	04:28			ASSIST by ANDELKOVIC,STEFAN
MISSED 3PTR by WAYMAN,NICK	04:11			
REBOUND (OFF) by GUILLORY,ANDREW	04:11			
MISSED 3PTR by GUILLORY,ANDREW	04:00			
REBOUND (OFF) by MCKINNEY,DECHRISTON	04:00			
MISSED LAYUP by MCKINNEY,DECHRISTON	03:55			
	03:55			REBOUND (DEF) by FRANCIS,WILL
	03:39			TURNOVER by BURRELL,ANTOINE
STEAL by LEE,FREDDY	03:38			
MISSED 3PTR by WAYMAN,NICK	03:32			
	03:32			REBOUND (DEF) by MCNAIR,BLAKE
	03:09			MISSED 3PTR by GIBSON,JACOB
BLOCK by LEE,FREDDY	03:09			
	03:08			REBOUND (OFF) by TEAM
	03:07			TIMEOUT MEDIA
SUB IN: HAUGHTON,TYRONE	03:07			
SUB OUT: WAYMAN,NICK	03:07			
	03:07			SUB IN: ANTHONY,REGGIE
	03:07			SUB OUT: BURRELL,ANTOINE
	02:56			MISSED LAYUP by ANDELKOVIC,STEFAN
BLOCK by HAUGHTON,TYRONE	02:56			
REBOUND (DEF) by GUILLORY,ANDREW	02:54			
	02:54			SUB IN: BURRELL,ANTOINE

VISITORS: Arkansas Tech	Time	Score	Margin	HOME: Harding
	02:54			SUB OUT: ANTHONY,REGGIE
MISSED LAYUP by GUILLORY,ANDREW	02:43			
REBOUND (OFF) by HAUGHTON,TYRONE	02:43			
GOOD! TIPIN by HAUGHTON,TYRONE [PNT]	02:39	30-31	V 1	
	02:25			MISSED 3PTR by ANDELKOVIC,STEFAN
REBOUND (DEF) by GUILLORY,ANDREW	02:25			
	02:03			FOUL by FRANCIS,WILL
MISSED FT by CORLEY,TYLER	02:03			
REBOUND (OFF) by MCKINNEY,DECHRISTON	02:03			
SUB IN: FLETCHER,BRYSON	02:03			
SUB OUT: LEE,FREDDY	02:03			
	02:03			SUB IN: WARD,ZAC
	02:03			SUB OUT: BURRELL,ANTOINE
MISSED LAYUP by FLETCHER,BRYSON	01:42			
REBOUND (OFF) by HAUGHTON,TYRONE	01:42			
TURNOVER by HAUGHTON,TYRONE	01:38			
	01:20	33-31	H 2	GOOD! 3PTR by GIBSON,JACOB
	01:20			ASSIST by MCNAIR,BLAKE
TURNOVER by GUILLORY,ANDREW	01:04			
	01:04			STEAL by GIBSON,JACOB
FOUL by FLETCHER,BRYSON	01:04			
	01:04			MISSED FT by GIBSON,JACOB
REBOUND (DEF) by MCKINNEY,DECHRISTON	01:04			
SUB IN: WAYMAN,NICK	01:04			
SUB OUT: HAUGHTON,TYRONE	01:04			
MISSED LAYUP by CORLEY,TYLER	00:52			
REBOUND (OFF) by CORLEY,TYLER	00:52			
MISSED LAYUP by CORLEY,TYLER	00:51			
REBOUND (OFF) by MCKINNEY,DECHRISTON	00:50			
GOOD! LAYUP by MCKINNEY,DECHRISTON [PNT]	00:48	33-33	T	
	00:30			TURNOVER by FRANCIS,WILL
STEAL by FLETCHER,BRYSON	00:28			
GOOD! DUNK by GUILLORY,ANDREW [FB/PNT]	00:27	33-35	V 2	
ASSIST by CORLEY,TYLER	00:27			
	00:26			TIMEOUT 30SEC
	00:05			TURNOVER by MCNAIR,BLAKE
STEAL by CORLEY,TYLER	00:04			

Arkansas Tech 35, Harding 33

Period 1-only	In Paint	Off T/O	2nd Chance	Fast Break	Bench	****
ATU-M	12	8	9	4	6	Score tied - 4 times
HU	18	13	8	2	10	Lead changed - 6 times



**Official Basketball Box Score -- Game Totals -- Second Half Statistics**  
**Arkansas Tech vs Harding**  
**2/15/2016 7:30 p.m. at Searcy, Ark. (Rhodes-Reaves Field House)**

**Arkansas Tech, 41, 13-10, 8-9 GAC**

##	Player	S	Total			Rebounds			PF	TP	A	TO	Blk	Stl	Min
			FG-FGA	3PT FG-FGA	FT-FTA	Off Reb	Def Reb	Tot Reb							
00	FLETCHER, BRYSON	g	0-0	0-0	0-0	1	2	3	0	0	1	0	0	0	13
03	HAUGHTON, TYRONE	f	0-0	0-0	0-0	1	2	3	3	0	0	1	1	0	11
10	CORLEY, TYLER	g	6-12	1-5	6-7	0	0	0	3	19	0	3	0	1	18
13	WAYMAN, NICK	f	2-5	0-3	0-0	0	3	3	0	4	1	1	0	2	20
15	GUILLORY, ANDREW	g	5-9	0-2	2-2	0	0	0	1	12	0	1	0	1	17
02	CLINE, MASON		0-1	0-1	0-0	0	1	1	0	0	0	0	0	0	2
12	LEE, FREDDY		1-2	1-2	2-2	0	2	2	1	5	0	0	0	2	14
20	OWENS, JERRY		0-0	0-0	0-0	0	0	0	0	0	0	0	0	0	0
30	MCKINNEY, DECHRISTOI		0-1	0-0	1-2	0	0	0	2	1	0	1	0	1	5
TEAM						0	2	2	0		0				
Totals			14-30	2-13	11-13	2	12	14	10	41	2	7	1	7	100

FG % Half: 14-30 46.7%  
 3FG % Half: 2-13 30.8%  
 FT % Half: 11-13 84.6%

**Harding, 46, 13-9, 12-5 GAC**

##	Player	S	Total			Rebounds			PF	TP	A	TO	Blk	Stl	Min
			FG-FGA	3PT FG-FGA	FT-FTA	Off Reb	Def Reb	Tot Reb							
03	ANTHONY, REGGIE	g	4-6	1-1	0-0	1	3	4	2	9	2	1	0	1	16
15	GIBSON, JACOB	g	3-6	2-4	0-0	0	3	3	2	8	0	1	0	0	17
21	FRANCIS, WILL	g	3-7	1-2	4-5	0	1	1	0	11	4	1	0	2	20
23	MCNAIR, BLAKE	g	3-3	3-3	3-4	1	3	4	0	12	0	3	0	0	20
50	EGGLESTON, BRADEN	f	0-0	0-0	0-0	0	0	0	0	0	0	0	0	0	0
02	BAILEY, MICAH		0-0	0-0	0-0	0	0	0	0	0	0	0	0	0	0
04	WARD, ZAC		0-0	0-0	0-0	0	0	0	0	0	0	0	0	0	0
22	HUDSON, JOHN		0-1	0-1	0-0	0	1	1	1	0	0	1	0	0	4
24	BURRELL, ANTOINE		1-1	0-0	2-2	0	0	0	2	4	2	0	0	0	7
42	ANDELKOVIC, STEFAN		1-4	0-1	0-0	0	2	2	2	2	1	2	0	0	16
TEAM						0	1	1	0		1				
Totals			15-28	7-12	9-11	2	14	16	9	46	9	10	0	3	100

FG % Half: 15-28 53.6%  
 3FG % Half: 7-12 33.3%  
 FT % Half: 9-11 81.8%

Officials: Brad Gaston, K.B. Burdett Jr., Tim Fitzgerald  
 Technical Fouls: Arkansas Tech- None. Harding- None.

Score by periods	1st	2nd	Total
Arkansas Tech	35	41	76
Harding	33	46	79

Points	In Paint	Off T/O	2nd Chance	Fast Break	Bench
ATU-M	24	11	4	4	6
HU	12	13	1	0	6

Last FG - ATU-M 2nd-00:48, HU 2nd-01:48.  
 ATU-M led for 0:31. HU led for 19:29. Game was tied for 0:00.

Score tied - 0 times  
 Lead changed - 1 times

**Arkansas Tech vs Harding**  
**2/15/2016; 7:30 p.m. at Searcy, Ark. (Rhodes-Reaves Field House)**  
**Period 2 Play-By-Play**

VISITORS: Arkansas Tech	Time	Score	Margin	HOME: Harding
	20:00			SUB IN: ANDELKOVIC,STEFAN
	20:00			SUB OUT: EGGLESTON,BRADEN
	19:48			TURNOVER by ANDELKOVIC,STEFAN
MISSED 3PTR by GUILLORY,ANDREW	19:39			
	19:39			REBOUND (DEF) by FRANCIS,WILL
	19:29	36-35	H 1	GOOD! 3PTR by MCNAIR,BLAKE
	19:29			ASSIST by FRANCIS,WILL
MISSED 3PTR by WAYMAN,NICK	19:07			
	19:07			REBOUND (DEF) by ANTHONY,REGGIE
	18:58			FOUL by ANTHONY,REGGIE
	18:58			TURNOVER by ANTHONY,REGGIE
TURNOVER by CORLEY,TYLER	18:49			
	18:37	38-35	H 3	GOOD! JUMPER by FRANCIS,WILL [PNT]
MISSED LAYUP by GUILLORY,ANDREW	18:22			
	18:22			REBOUND (DEF) by GIBSON,JACOB
	18:10	40-35	H 5	GOOD! JUMPER by ANTHONY,REGGIE
	18:10			ASSIST by ANDELKOVIC,STEFAN
GOOD! 3PTR by CORLEY,TYLER	17:52	40-38	H 2	
ASSIST by FLETCHER,BRYSON	17:52			
	17:38	43-38	H 5	GOOD! 3PTR by MCNAIR,BLAKE
	17:38			ASSIST by FRANCIS,WILL
MISSED 3PTR by CORLEY,TYLER	17:15			
REBOUND (OFF) by HAUGHTON,TYRONE	17:15			
GOOD! LAYUP by GUILLORY,ANDREW [PNT]	17:10	43-40	H 3	
	16:50			MISSED LAYUP by ANDELKOVIC,STEFAN
BLOCK by HAUGHTON,TYRONE	16:50			
REBOUND (DEF) by FLETCHER,BRYSON	16:48			
MISSED 3PTR by CORLEY,TYLER	16:43			
REBOUND (OFF) by FLETCHER,BRYSON	16:43			
GOOD! LAYUP by WAYMAN,NICK [PNT]	16:31	43-42	H 1	
FOUL by CORLEY,TYLER	16:11			
	16:11	46-42	H 4	GOOD! 3PTR by MCNAIR,BLAKE
	16:11			ASSIST by FRANCIS,WILL
GOOD! LAYUP by GUILLORY,ANDREW [PNT]	16:11	46-44	H 2	
SUB IN: MCKINNEY,DECHRISTON	16:11			
SUB IN: LEE,FREDDY	16:11			
SUB OUT: FLETCHER,BRYSON	16:11			
SUB OUT: HAUGHTON,TYRONE	16:11			
	16:11			SUB IN: HUDSON,JOHN
	16:11			SUB IN: BURRELL,ANTOINE
	16:11			SUB OUT: ANTHONY,REGGIE
	16:11			SUB OUT: ANDELKOVIC,STEFAN
FOUL by MCKINNEY,DECHRISTON	15:29			
	15:29			TIMEOUT MEDIA
	15:15			TURNOVER by MCNAIR,BLAKE
STEAL by LEE,FREDDY	15:15			
	15:01			FOUL by GIBSON,JACOB
MISSED FT by MCKINNEY,DECHRISTON	15:01			
REBOUND (DEADB) by TEAM	15:01			
GOOD! FT by MCKINNEY,DECHRISTON	15:01	46-45	H 1	
	15:01			SUB IN: ANDELKOVIC,STEFAN
	15:01			SUB OUT: GIBSON,JACOB
	14:41			TURNOVER by MCNAIR,BLAKE

VISITORS: Arkansas Tech	Time	Score	Margin	HOME: Harding
STEAL by MCKINNEY,DECHRISTON	14:40			
	14:25			FOUL by HUDSON,JOHN
TURNOVER by MCKINNEY,DECHRISTON	14:21			
	14:07	49-45	H 4	GOOD! 3PTR by FRANCIS,WILL
	14:07			ASSIST by BURRELL,ANTOINE
MISSED LAYUP by GUILLORY,ANDREW	13:48			
	13:48			REBOUND (DEF) by ANDELKOVIC,STEFAN
	13:42			TURNOVER by HUDSON,JOHN
STEAL by WAYMAN,NICK	13:41			
MISSED 3PTR by CLINE,MASON	13:26			
	13:26			REBOUND (DEF) by MCNAIR,BLAKE
SUB IN: CLINE,MASON	13:22			
SUB OUT: CORLEY,TYLER	13:22			
FOUL by MCKINNEY,DECHRISTON	13:15			
	13:15	50-45	H 5	GOOD! FT by BURRELL,ANTOINE
	13:15	51-45	H 6	GOOD! FT by BURRELL,ANTOINE
SUB IN: CORLEY,TYLER	13:15			
SUB IN: HAUGHTON,TYRONE	13:15			
SUB IN: FLETCHER,BRYSON	13:15			
SUB OUT: MCKINNEY,DECHRISTON	13:15			
SUB OUT: CLINE,MASON	13:15			
SUB OUT: GUILLORY,ANDREW	13:15			
MISSED 3PTR by LEE,FREDDY	13:03			
	13:03			REBOUND (DEF) by HUDSON,JOHN
	12:57			MISSED 3PTR by HUDSON,JOHN
REBOUND (DEF) by TEAM	12:57			
MISSED 3PTR by CORLEY,TYLER	12:41			
	12:41			REBOUND (DEF) by ANDELKOVIC,STEFAN
	12:22	53-45	H 8	GOOD! LAYUP by ANDELKOVIC,STEFAN [PNT]
	12:22			ASSIST by BURRELL,ANTOINE
GOOD! LAYUP by CORLEY,TYLER [PNT]	12:08	53-47	H 6	
	12:05			SUB IN: ANTHONY,REGGIE
	12:05			SUB IN: GIBSON,JACOB
	12:05			SUB OUT: HUDSON,JOHN
	12:05			SUB OUT: BURRELL,ANTOINE
	11:55			MISSED 3PTR by GIBSON,JACOB
REBOUND (DEF) by WAYMAN,NICK	11:55			
GOOD! LAYUP by CORLEY,TYLER [PNT]	11:34	53-49	H 4	
FOUL by HAUGHTON,TYRONE	11:24			
	11:24			TIMEOUT MEDIA
SUB IN: GUILLORY,ANDREW	11:24			
SUB OUT: FLETCHER,BRYSON	11:24			
	11:22			MISSED LAYUP by FRANCIS,WILL
REBOUND (DEF) by HAUGHTON,TYRONE	11:22			
MISSED LAYUP by CORLEY,TYLER	11:03			
	11:03			REBOUND (DEF) by GIBSON,JACOB
FOUL by CORLEY,TYLER	11:00			
	10:37	55-49	H 6	GOOD! JUMPER by FRANCIS,WILL
MISSED 3PTR by WAYMAN,NICK	10:18			
	10:18			REBOUND (DEF) by ANTHONY,REGGIE
FOUL by LEE,FREDDY	10:08			
	10:08			MISSED FT by FRANCIS,WILL
	10:08			REBOUND (DEADB) by TEAM
	10:08	56-49	H 7	GOOD! FT by FRANCIS,WILL
	10:08	57-49	H 8	GOOD! FT by FRANCIS,WILL
SUB IN: FLETCHER,BRYSON	10:08			
SUB IN: MCKINNEY,DECHRISTON	10:08			
SUB OUT: LEE,FREDDY	10:08			

VISITORS: Arkansas Tech	Time	Score	Margin	HOME: Harding
SUB OUT: HAUGHTON, TYRONE	10:08			
	10:08			SUB IN: BURRELL, ANTOINE
	10:08			SUB OUT: ANDELKOVIC, STEFAN
GOOD! LAYUP by GUILLORY, ANDREW [PNT]	09:57	57-51	H 6	
	09:34	59-51	H 8	GOOD! LAYUP by GIBSON, JACOB [PNT]
MISSED LAYUP by MCKINNEY, DECHRISTON	09:13			
	09:13			REBOUND (DEF) by GIBSON, JACOB
	09:04	62-51	H 11	GOOD! 3PTR by GIBSON, JACOB
	09:04			ASSIST by ANTHONY, REGGIE
TIMEOUT 30SEC	09:02			
TIMEOUT MEDIA	09:02			
TURNOVER by WAYMAN, NICK	08:53			
	08:52			STEAL by FRANCIS, WILL
	08:40	65-51	H 14	GOOD! 3PTR by GIBSON, JACOB
	08:40			ASSIST by ANTHONY, REGGIE
GOOD! LAYUP by CORLEY, TYLER [PNT]	08:17	65-53	H 12	
	08:01			MISSED LAYUP by FRANCIS, WILL
REBOUND (DEF) by WAYMAN, NICK	08:01			
TURNOVER by CORLEY, TYLER	07:55			
	07:54			STEAL by ANTHONY, REGGIE
	07:48	67-53	H 14	GOOD! LAYUP by BURRELL, ANTOINE [PNT]
	07:48			ASSIST by FRANCIS, WILL
GOOD! LAYUP by CORLEY, TYLER [PNT]	07:35	67-55	H 12	
	07:35			FOUL by BURRELL, ANTOINE
TIMEOUT MEDIA	07:35			
MISSED FT by CORLEY, TYLER	07:35			
	07:35			REBOUND (DEF) by MCNAIR, BLAKE
SUB IN: LEE, FREDDY	07:35			
SUB IN: HAUGHTON, TYRONE	07:35			
SUB OUT: FLETCHER, BRYSON	07:35			
SUB OUT: MCKINNEY, DECHRISTON	07:35			
	07:26	69-55	H 14	GOOD! LAYUP by ANTHONY, REGGIE [PNT]
	07:05			FOUL by BURRELL, ANTOINE
GOOD! FT by CORLEY, TYLER	07:05	69-56	H 13	
GOOD! FT by CORLEY, TYLER	07:05	69-57	H 12	
	07:05			SUB IN: ANDELKOVIC, STEFAN
	07:05			SUB OUT: BURRELL, ANTOINE
	06:55			MISSED LAYUP by GIBSON, JACOB
REBOUND (DEF) by WAYMAN, NICK	06:55			
MISSED 3PTR by GUILLORY, ANDREW	06:46			
	06:46			REBOUND (DEF) by MCNAIR, BLAKE
	06:31			MISSED JUMPER by ANDELKOVIC, STEFAN
REBOUND (DEF) by TEAM	06:31			
	06:15			FOUL by ANTHONY, REGGIE
GOOD! FT by CORLEY, TYLER	06:15	69-58	H 11	
GOOD! FT by CORLEY, TYLER	06:15	69-59	H 10	
SUB IN: FLETCHER, BRYSON	06:15			
SUB OUT: GUILLORY, ANDREW	06:15			
	06:07			TURNOVER by ANDELKOVIC, STEFAN
STEAL by LEE, FREDDY	06:06			
	06:06			FOUL by ANDELKOVIC, STEFAN
GOOD! FT by LEE, FREDDY	06:06	69-60	H 9	
GOOD! FT by LEE, FREDDY	06:06	69-61	H 8	
	05:48			MISSED JUMPER by FRANCIS, WILL
REBOUND (DEF) by LEE, FREDDY	05:48			
MISSED LAYUP by CORLEY, TYLER	05:24			
	05:24			REBOUND (DEF) by TEAM
SUB IN: GUILLORY, ANDREW	05:20			

VISITORS: Arkansas Tech	Time	Score	Margin	HOME: Harding
SUB OUT: CORLEY, TYLER	05:20			
	04:50			MISSED 3PTR by ANDELKOVIC, STEFAN
REBOUND (DEF) by FLETCHER, BRYSON	04:50			
MISSED 3PTR by WAYMAN, NICK	04:32			
	04:32			REBOUND (DEF) by ANTHONY, REGGIE
FOUL by HAUGHTON, TYRONE	04:16			
	04:16	70-61	H 9	GOOD! FT by FRANCIS, WILL
	04:16	71-61	H 10	GOOD! FT by FRANCIS, WILL
SUB IN: CLINE, MASON	04:16			
SUB OUT: HAUGHTON, TYRONE	04:16			
GOOD! 3PTR by LEE, FREDDY	04:13	71-64	H 7	
ASSIST by WAYMAN, NICK	04:13			
	03:52			MISSED 3PTR by FRANCIS, WILL
REBOUND (DEF) by CLINE, MASON	03:52			
TURNOVER by GUILLORY, ANDREW	03:47			
	03:47			STEAL by FRANCIS, WILL
	03:47			TIMEOUT MEDIA
	03:39	74-64	H 10	GOOD! 3PTR by ANTHONY, REGGIE
GOOD! LAYUP by CORLEY, TYLER [PNT]	03:25	74-66	H 8	
	03:13			MISSED 3PTR by GIBSON, JACOB
	03:13			REBOUND (OFF) by ANTHONY, REGGIE
	03:09			MISSED LAYUP by ANTHONY, REGGIE
REBOUND (DEF) by HAUGHTON, TYRONE	03:09			
FOUL by HAUGHTON, TYRONE	03:05			
TURNOVER by HAUGHTON, TYRONE	03:05			
TIMEOUT TEAM	03:05			
SUB IN: HAUGHTON, TYRONE	03:05			
SUB IN: CORLEY, TYLER	03:05			
SUB OUT: CLINE, MASON	03:05			
SUB OUT: FLETCHER, BRYSON	03:05			
	02:38			TURNOVER by FRANCIS, WILL
STEAL by CORLEY, TYLER	02:38			
SUB IN: CLINE, MASON	02:38			
SUB OUT: HAUGHTON, TYRONE	02:38			
	02:29			FOUL by ANDELKOVIC, STEFAN
GOOD! FT by GUILLORY, ANDREW	02:29	74-67	H 7	
GOOD! FT by GUILLORY, ANDREW	02:29	74-68	H 6	
SUB IN: FLETCHER, BRYSON	02:29			
SUB OUT: CLINE, MASON	02:29			
	02:24			TURNOVER by MCNAIR, BLAKE
STEAL by WAYMAN, NICK	02:23			
GOOD! LAYUP by GUILLORY, ANDREW [FB/PNT]	02:20	74-70	H 4	
	02:15			TURNOVER by GIBSON, JACOB
STEAL by GUILLORY, ANDREW	02:14			
GOOD! LAYUP by GUILLORY, ANDREW [FB/PNT]	02:12	74-72	H 2	
	02:10			TIMEOUT 30SEC
	01:48	76-72	H 4	GOOD! LAYUP by ANTHONY, REGGIE [PNT]
TURNOVER by CORLEY, TYLER	01:32			
	01:02			TURNOVER by TEAM
SUB IN: CLINE, MASON	01:02			
SUB OUT: FLETCHER, BRYSON	01:02			
GOOD! JUMPER by WAYMAN, NICK [PNT]	00:48	76-74	H 2	
	00:23			MISSED JUMPER by ANTHONY, REGGIE
	00:23			REBOUND (OFF) by MCNAIR, BLAKE
FOUL by GUILLORY, ANDREW	00:18			
	00:18	77-74	H 3	GOOD! FT by MCNAIR, BLAKE
	00:18			MISSED FT by MCNAIR, BLAKE
REBOUND (DEF) by LEE, FREDDY	00:18			

VISITORS: Arkansas Tech	Time	Score	Margin	HOME: Harding
	00:09	78-74	H 4	GOOD! FT by MCNAIR,BLAKE
	00:09			FOUL by GIBSON,JACOB
	00:09	79-74	H 5	GOOD! FT by MCNAIR,BLAKE
GOOD! FT by CORLEY,TYLER	00:09	79-75	H 4	
GOOD! FT by CORLEY,TYLER	00:09	79-76	H 3	
SUB IN: FLETCHER,BRYSON	00:09			
FOUL by CORLEY,TYLER	00:08			
MISSED 3PTR by CORLEY,TYLER	00:01			
REBOUND (DEADB) by TEAM	00:00			

Arkansas Tech 76, Harding 79

Period 2-only	In Paint	Off T/O	2nd Chance	Fast Break	Bench	****
ATU-M	24	11	4	4	6	Score tied - 0 times
HU	12	13	1	0	6	Lead changed - 0 times

# Arkansas Tech vs Harding

## 2/15/2016; 7:30 p.m. at Searcy, Ark. (Rhodes-Reaves Field House)

### Scoring/Runs Reference

Period 1			Period 2		
Arkansas Tech	Score	Harding	Arkansas Tech	Score	Harding
19:43 - CORLEY, LAYUP	X				ANDELKOVIC TURN - ,19:48
19:39 - ,GUILLORY, 3PTR	3 3-0 -3		19:39 - GUILLORY, 3PTR	X	
		EGGLESTON, FT - 19:25		35-36 1 3	MCNAIR, 3PTR, -, 19:29
		EGGLESTON, FT - 19:25	19:07 - WAYMAN, 3PTR	X	
18:59 - GUILLORY, LAYUP	X				TO ANTHONY TURN - ,18:58
		ANTHONY, LAYUP - 18:41	18:49 - ,CORLEY TURN	TO	
		EGGLESTON, TIPIN, -, 18:39		35-38 3 2P	FRANCIS, JUMPER, -, 18:37
18:23 - CORLEY, 3PTR	X		18:22 - GUILLORY, LAYUP	X	
	3-2 -1 2P			35-40 5 2	ANTHONY, JUMPER, -, 18:10
17:52 - WAYMAN, 3PTR	X	FRANCIS, LAYUP, -, 18:15	17:52 - ,CORLEY, 3PTR	3 38-40 2	
				38-43 5 3	MCNAIR, 3PTR, -, 17:38
17:27 - CORLEY, FT	X	FRANCIS, 3PTR, -, 17:43	17:15 - CORLEY, 3PTR	X	
17:27 - ,CORLEY, FT	1 4-7 3		17:10 - ,GUILLORY, LAYUP	2P 40-43 3	
		GIBSON, 3PTR, -, 17:05			X ANDELKOVIC, LAYUP - 16:50
16:36 - GUILLORY, JUMPER	X		16:43 - CORLEY, 3PTR	X	
		GIBSON, 3PTR - 16:25	16:31 - ,WAYMAN, LAYUP	2P 42-43 1	
15:57 - FLETCHER, LAYUP	X			42-46 4 3	MCNAIR, 3PTR, -, 16:11
		ANTHONY, LAYUP, -, 15:47	16:11 - ,GUILLORY, LAYUP	2P 44-46 2	
15:35 - ,GUILLORY, FT	1 5-12 7				TO MCNAIR TURN -, 15:15
15:35 - ,GUILLORY, FT	1 6-12 6		15:01 - MCKINNEY, FT	X	
		EGGLESTON, LAYUP - 15:18	15:01 - ,MCKINNEY, FT	1 45-46 1	
14:49 - GUILLORY, JUMPER	X				TO MCNAIR TURN -, 14:41
		ANTHONY, FT, -, 14:30	14:21 - ,MCKINNEY TURN	TO	
		ANTHONY, FT, -, 14:30		45-49 4 3	FRANCIS, 3PTR, -, 14:07
14:17 - ,OWENS TURN	TO		13:48 - GUILLORY, LAYUP	X	
		GIBSON, 3PTR - 14:09			TO HUDSON TURN -, 13:42
		FRANCIS, JUMPER, -, 14:02	13:26 - CLINE, 3PTR	X	
13:21 - ,LEE TURN	TO			45-50 5 1	BURRELL, FT, -, 13:15
		GIBSON, 3PTR, -, 13:04		45-51 6 1	BURRELL, FT, -, 13:15
		GIBSON, FT, -, 13:04	13:03 - LEE, 3PTR	X	
					X HUDSON, 3PTR - 12:57

12:49 - LEE,JUMPER X

12:29 - CORLEY,3PTR X

12:25,-,GUILLORY,LAYUP 2P 8-20 12 X FRANCIS,3PTR - 12:07

11:54 - WAYMAN,3PTR X

TO WARD TURN -,11:33

11:12,-,FLETCHER,3PTR 3 11-20 9 X ANTHONY,LAYUP - 10:55

11-22 11 2P ANDELKOVIC,LAYUP,-,10:49

10:34,-,LEE,FT 1 12-22 10

10:34,-,LEE,FT 1 13-22 9 X HUDSON,3PTR - 10:21

X BAILEY,LAYUP - 10:19

10:03 - CLINE,3PTR X

TO FRANCIS TURN -,09:54

09:33,-,GUILLORY,3PTR 3 16-22 6

TO HUDSON TURN -,09:17

09:01 - GUILLORY,3PTR X

08:52 - LEE,FT X

X WARD,3PTR - 08:33

08:30,-,MCKINNEY,FT 1 17-22 5

08:30,-,MCKINNEY,FT 1 18-22 4 X ANDELKOVIC,3PTR - 08:07

18-24 6 2P BAILEY,LAYUP,-,08:05

07:51,-,CORLEY TURN TO

18-26 8 2PF BAILEY,LAYUP,-,07:47

07:39,-,MCKINNEY TURN TO

18-28 10 2P ANDELKOVIC,LAYUP,-,07:24

07:11,-,CORLEY TURN TO

X BAILEY,LAYUP - 06:59

06:52,-,CORLEY,3PTR 3 21-28 7 X MCNAIR,JUMPER - 06:31

06:23,-,CORLEY,LAYUP 2P 23-28 5 X ANDELKOVIC,JUMPER - 06:07

06:06,-,GUILLORY,FT 1 24-28 4

12:41 - CORLEY,3PTR X

45-53 8 2P ANDELKOVIC,LAYUP,-,12:22

12:08,-,CORLEY,LAYUP 2P 47-53 6 X GIBSON,3PTR - 11:55

11:34,-,CORLEY,LAYUP 2P 49-53 4 X FRANCIS,LAYUP - 11:22

11:03 - CORLEY,LAYUP X

49-55 6 2 FRANCIS,JUMPER,-,10:37

10:18 - WAYMAN,3PTR X

X FRANCIS,FT - 10:08

49-56 7 1 FRANCIS,FT,-,10:08

49-57 8 1 FRANCIS,FT,-,10:08

09:57,-,GUILLORY,LAYUP 2P 51-57 6

51-59 8 2P GIBSON,LAYUP,-,09:34

09:13 - MCKINNEY,LAYUP X

51-62 11 3 GIBSON,3PTR,-,09:04

08:53,-,WAYMAN TURN TO

51-65 14 3 GIBSON,3PTR,-,08:40

08:17,-,CORLEY,LAYUP 2P 53-65 12 X FRANCIS,LAYUP - 08:01

07:55,-,CORLEY TURN TO

53-67 14 2P BURRELL,LAYUP,-,07:48

07:35,-,CORLEY,LAYUP 2P 55-67 12

07:35 - CORLEY,FT X

55-69 14 2P ANTHONY,LAYUP,-,07:26

07:05,-,CORLEY,FT 1 56-69 13

07:05,-,CORLEY,FT 1 57-69 12 X GIBSON,LAYUP - 06:55

06:46 - GUILLORY,3PTR X

X ANDELKOVIC,JUMPER - 06:31

06:15,-,CORLEY,FT 1 58-69 11

06:15,-,CORLEY,FT 1 59-69 10

TO ANDELKOVIC TURN - 06:07

06:06,-,LEE,FT 1 60-69 9

06:06,-,LEE,FT 1 61-69 8



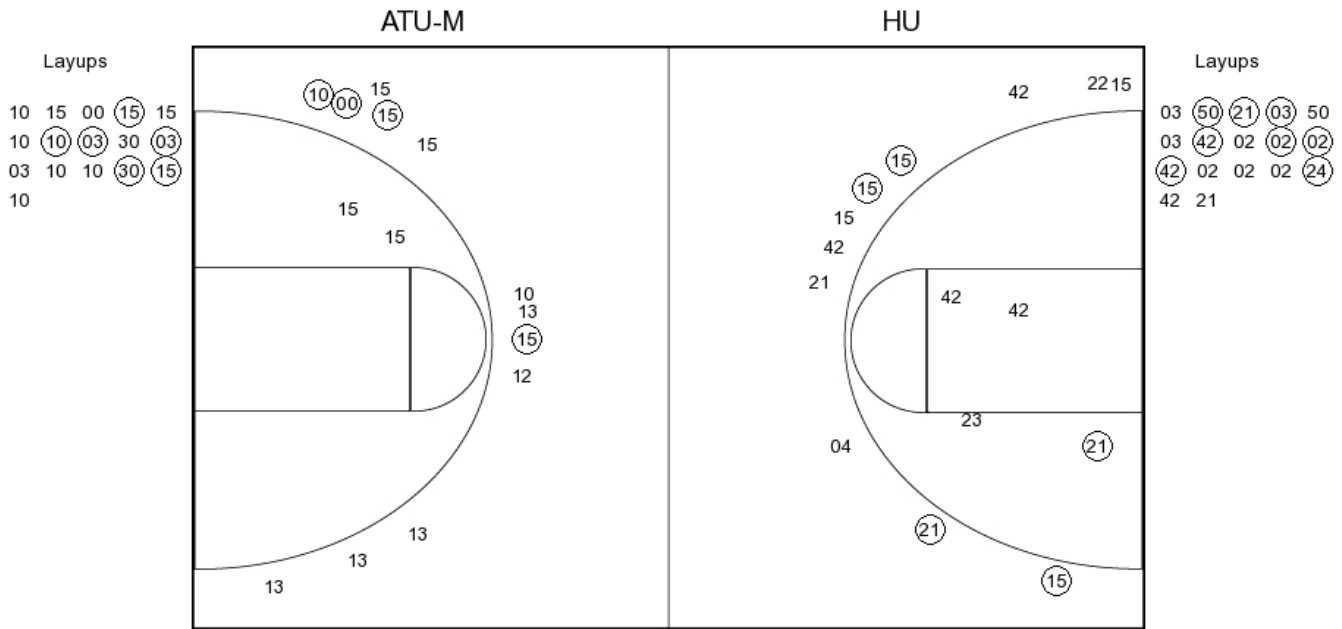


**Arkansas Tech vs Harding**

**OFFICIAL SHOT CHART**

2/15/2016 at Searcy, Ark. (Rhodes-Reaves Field House)

**PERIOD 1**



**ATU-M PERIOD 1**

FG Made	10
FG Attempted	30
3PFG Made	4
3PFG Attempted	13

**HU PERIOD 1**

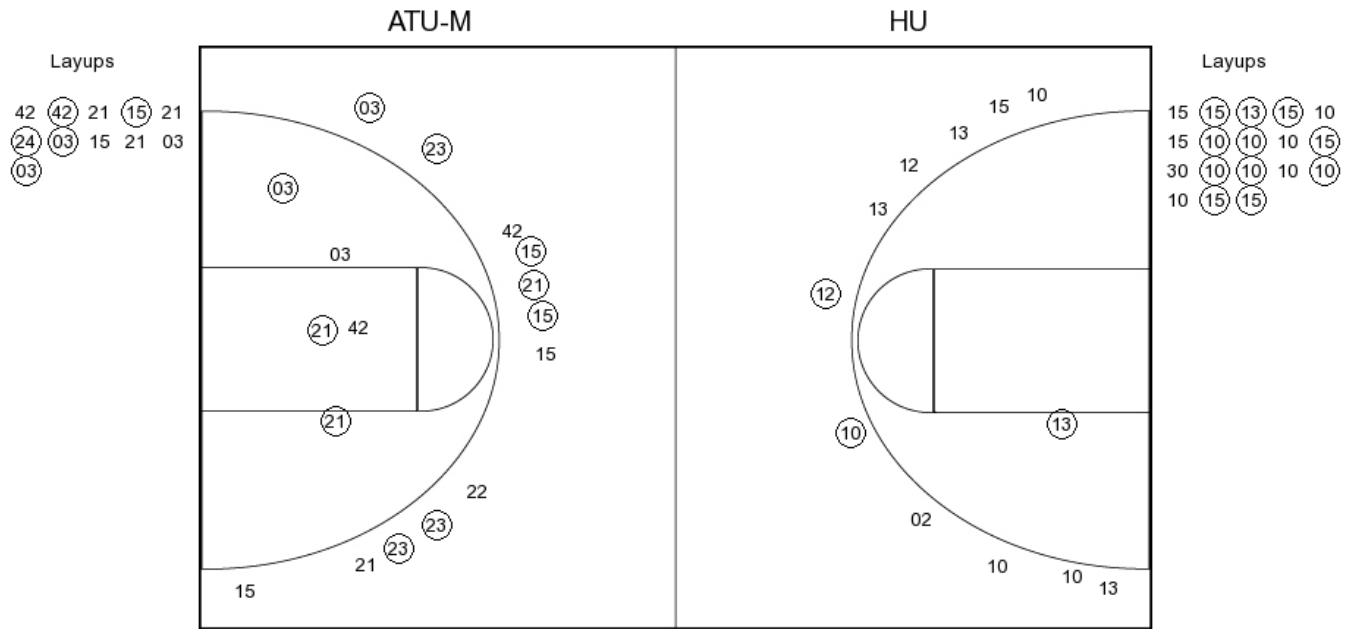
FG Made	13
FG Attempted	32
3PFG Made	4
3PFG Attempted	12

**Arkansas Tech vs Harding**

**OFFICIAL SHOT CHART**

2/15/2016 at Searcy, Ark. (Rhodes-Reaves Field House)

**PERIOD 2**



**ATU-M PERIOD 2**

FG Made	14
FG Attempted	30
3PFG Made	2
3PFG Attempted	13

**HU PERIOD 2**

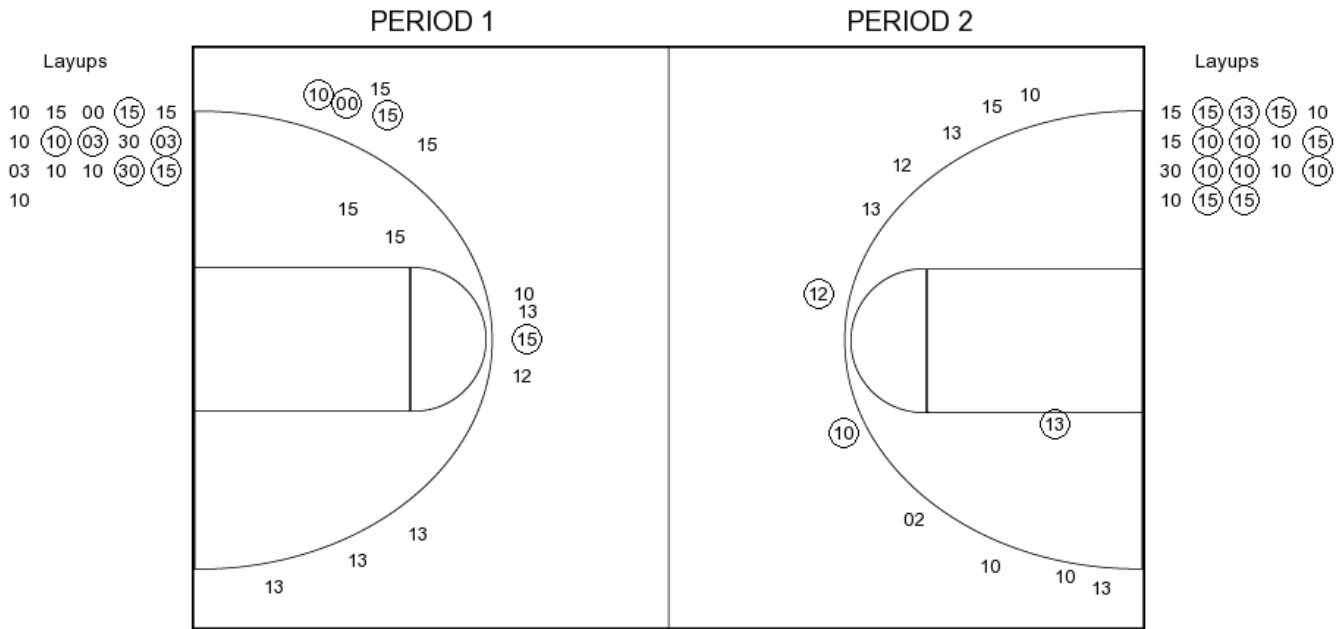
FG Made	15
FG Attempted	28
3PFG Made	7
3PFG Attempted	12

**Arkansas Tech vs Harding**

**OFFICIAL SHOT CHART**

2/15/2016 at Searcy, Ark. (Rhodes-Reaves Field House)

**Arkansas Tech**



**ATU-M PERIOD 1**

FG Made	10
FG Attempted	30
3PFG Made	4
3PFG Attempted	13

**ATU-M PERIOD 2**

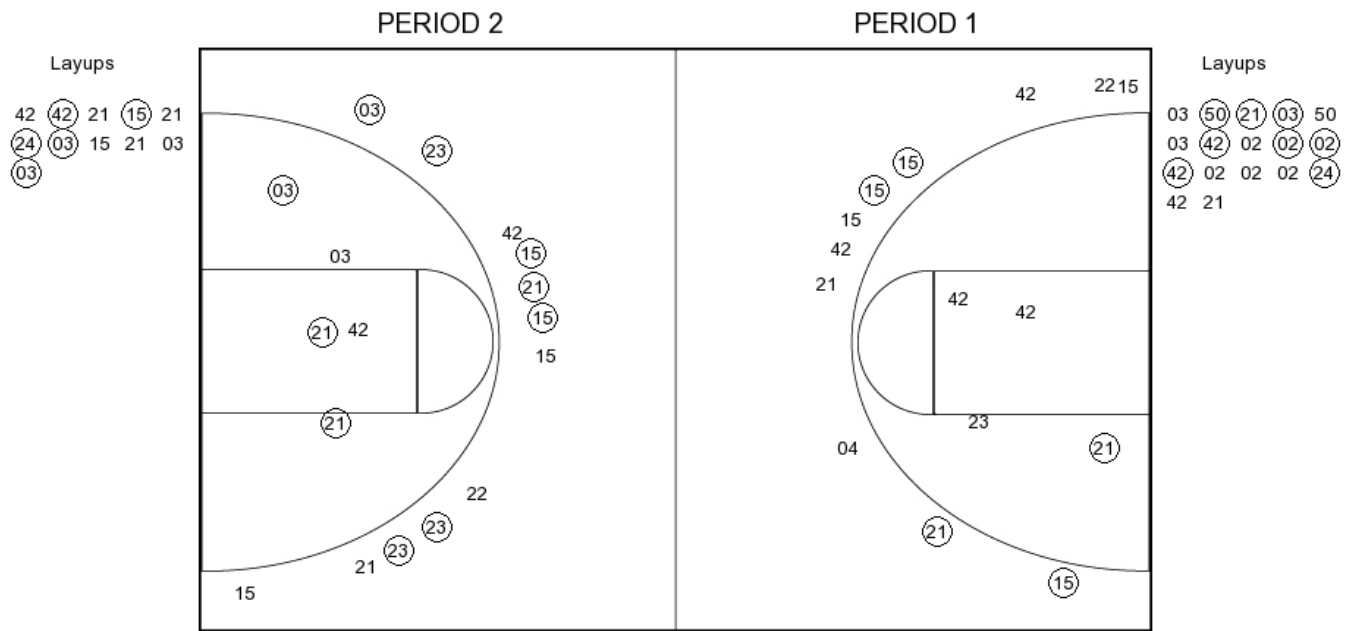
FG Made	14
FG Attempted	30
3PFG Made	2
3PFG Attempted	13

**Arkansas Tech vs Harding**

**OFFICIAL SHOT CHART**

2/15/2016 at Searcy, Ark. (Rhodes-Reaves Field House)

**Harding**



**HU PERIOD 1**

FG Made	13
FG Attempted	32
3PFG Made	4
3PFG Attempted	12

**HU PERIOD 2**

FG Made	15
FG Attempted	28
3PFG Made	7
3PFG Attempted	12