

SOUTHWESTERN OKLAHOMA STATE AT HARDING



1/30/2016

Searcy, Ark. (Rhodes-Reaves Field House)

FINAL STATS

Harding

(12-6, 11-2 GAC)

84

Southwestern Okla.

(11-8, 7-6 GAC)

59

Start Time: 3 p.m.

Officials: John Lartigue, Butch Parmley and Blake Thomas

Attendance: 1556

Official Basketball Box Score -- Game Totals -- Final Statistics
Southwestern Okla. vs Harding
1/30/2016 3 p.m. at Searcy, Ark. (Rhodes-Reaves Field House)

Southwestern Okla. 59 - 11-8, 7-6 GAC

| ## | Player | S | Total | | | Rebounds | | | PF | TP | A | TO | Blk | Stl | Min | | |
|--------|-------------------|---|--------|-----|--------|----------|---------|---------|----|----|----|----|-----|-----|-----|---------|-----|
| | | | FG-FGA | 3PT | FG-FGA | FT-FTA | Off Reb | Def Reb | | | | | | | | Tot Reb | |
| 01 | CHAMPION,MARKEISE | g | 5-11 | | 5-9 | 0-0 | 0 | 1 | 1 | 0 | 15 | 2 | 2 | 0 | 0 | 33 | |
| 03 | WELLS,EMEACHE | g | 2-6 | | 0-1 | 0-0 | 1 | 6 | 7 | 1 | 4 | 2 | 2 | 0 | 2 | 31 | |
| 11 | NEWMEN,JUWAN | f | 0-1 | | 0-0 | 0-0 | 0 | 0 | 0 | 1 | 0 | 0 | 0 | 1 | 0 | 4 | |
| 22 | JENNINGS,COLLIN | g | 1-5 | | 1-4 | 2-2 | 0 | 4 | 4 | 1 | 5 | 1 | 1 | 1 | 0 | 24 | |
| 33 | COLLINS,MARTELL | f | 6-18 | | 1-5 | 4-4 | 1 | 4 | 5 | 1 | 17 | 0 | 2 | 0 | 0 | 33 | |
| 00 | BATTISTI,COOPER | | 1-3 | | 0-1 | 0-0 | 1 | 0 | 1 | 2 | 2 | 0 | 0 | 0 | 0 | 8 | |
| 04 | HAMMONDS,GARRETT | | 0-1 | | 0-1 | 0-0 | 0 | 0 | 0 | 0 | 0 | 0 | 0 | 0 | 0 | 2 | |
| 13 | WILLIS,OLIVER | | 1-1 | | 0-0 | 1-2 | 3 | 1 | 4 | 0 | 3 | 0 | 0 | 0 | 0 | 4 | |
| 15 | FRANKLIN,WESLEY | | 1-4 | | 0-2 | 0-0 | 1 | 2 | 3 | 2 | 2 | 0 | 0 | 0 | 0 | 11 | |
| 20 | LEWALLEN,LUKE | | 0-1 | | 0-1 | 2-2 | 0 | 1 | 1 | 2 | 2 | 0 | 0 | 0 | 0 | 10 | |
| 21 | SHOEMAKER,NICK | | 1-9 | | 1-8 | 0-0 | 0 | 2 | 2 | 0 | 3 | 0 | 0 | 0 | 0 | 17 | |
| 35 | OJO,AYO | | 3-9 | | 0-0 | 0-0 | 3 | 7 | 10 | 3 | 6 | 0 | 1 | 0 | 1 | 23 | |
| TEAM | | | | | | | 1 | 5 | 6 | 0 | | | | | | | |
| TOTALS | | | | | 21-69 | 8-32 | 9-10 | 11 | 33 | 44 | 13 | 59 | 5 | 8 | 2 | 3 | 200 |

Deadball Rebounds: 2,0

| | | | | | | | | | |
|-------|-----------|-------|--------|-----------|------|-------|-------|-------|-------|
| FG % | 1st Half: | 12-36 | 33.3% | 2nd Half: | 9-33 | 27.3% | Game: | 21-69 | 30.4% |
| 3FG % | 1st Half: | 6-18 | 33.3% | 2nd Half: | 2-14 | 14.3% | Game: | 8-32 | 25.0% |
| FT % | 1st Half: | 2-2 | 100.0% | 2nd Half: | 7-8 | 87.5% | Game: | 9-10 | 90.0% |

Harding 84 - 12-6, 11-2 GAC

| ## | Player | S | Total | | | Rebounds | | | PF | TP | A | TO | Blk | Stl | Min | | |
|--------|-------------------|---|--------|-----|--------|----------|---------|---------|----|----|----|----|-----|-----|-----|---------|-----|
| | | | FG-FGA | 3PT | FG-FGA | FT-FTA | Off Reb | Def Reb | | | | | | | | Tot Reb | |
| 03 | ANTHONY,REGGIE | g | 5-10 | | 0-1 | 1-2 | 2 | 5 | 7 | 0 | 11 | 3 | 1 | 1 | 1 | 30 | |
| 15 | GIBSON,JACOB | g | 9-18 | | 3-9 | 0-0 | 2 | 5 | 7 | 3 | 21 | 5 | 0 | 0 | 0 | 30 | |
| 21 | FRANCIS,WILL | g | 2-5 | | 2-4 | 0-0 | 0 | 4 | 4 | 2 | 6 | 6 | 0 | 0 | 0 | 38 | |
| 23 | MCNAIR,BLAKE | g | 5-12 | | 3-7 | 2-2 | 0 | 6 | 6 | 1 | 15 | 1 | 1 | 0 | 0 | 36 | |
| 50 | EGGLESTON,BRADEN | f | 1-3 | | 0-0 | 0-0 | 0 | 3 | 3 | 1 | 2 | 2 | 1 | 0 | 0 | 17 | |
| 02 | BAILEY,MICAH | | 1-2 | | 0-0 | 0-0 | 0 | 1 | 1 | 1 | 2 | 0 | 0 | 0 | 0 | 2 | |
| 04 | WARD,ZAC | | 2-3 | | 0-1 | 1-2 | 0 | 1 | 1 | 1 | 5 | 1 | 0 | 0 | 3 | 15 | |
| 12 | ROARK,JACOB | | 1-1 | | 1-1 | 0-0 | 0 | 0 | 0 | 0 | 3 | 0 | 0 | 0 | 0 | 1 | |
| 14 | YATES,DAWSON | | 0-0 | | 0-0 | 0-0 | 1 | 0 | 1 | 0 | 0 | 0 | 0 | 0 | 0 | 1 | |
| 22 | HUDSON,JOHN | | 1-1 | | 1-1 | 0-0 | 0 | 0 | 0 | 1 | 3 | 1 | 0 | 0 | 0 | 6 | |
| 24 | BURRELL,ANTOINE | | 0-0 | | 0-0 | 0-0 | 0 | 0 | 0 | 0 | 0 | 0 | 0 | 0 | 0 | 2 | |
| 40 | KIRBY,MITCHELL | | 0-0 | | 0-0 | 0-0 | 0 | 0 | 0 | 0 | 0 | 0 | 0 | 0 | 0 | 1 | |
| 42 | ANDELKOVIC,STEFAN | | 5-11 | | 5-8 | 1-6 | 0 | 10 | 10 | 2 | 16 | 0 | 0 | 0 | 0 | 21 | |
| TEAM | | | | | | | 0 | 1 | 1 | 0 | | | | | | | |
| TOTALS | | | | | 32-66 | 15-32 | 5-12 | 5 | 36 | 41 | 12 | 84 | 19 | 3 | 1 | 4 | 200 |

Deadball Rebounds: 3,0

| | | | | | | | | | |
|-------|-----------|-------|-------|-----------|-------|-------|-------|-------|-------|
| FG % | 1st Half: | 18-39 | 46.2% | 2nd Half: | 14-27 | 51.9% | Game: | 32-66 | 48.5% |
| 3FG % | 1st Half: | 9-17 | 52.9% | 2nd Half: | 6-15 | 40.0% | Game: | 15-32 | 46.9% |
| FT % | 1st Half: | 0-0 | 0% | 2nd Half: | 5-12 | 41.7% | Game: | 5-12 | 41.7% |

Officials: John Lartigue, Butch Parmley and Blake Thomas
 Technical Fouls: Southwestern Okla.- None. Harding- None.
 Attendance: 1556

| Score by periods | 1st | 2nd | Total |
|--------------------|-----|-----|-------|
| Southwestern Okla. | 32 | 27 | 59 |
| Harding | 45 | 39 | 84 |

| Points | In Paint | Off T/O | 2nd Chance | Fast Break | Bench |
|--------|----------|---------|------------|------------|-------|
| SWOSU | 18 | 2 | 9 | 2 | 18 |
| HU | 28 | 8 | 9 | 2 | 29 |

Last FG - SWOSU 2nd-01:13, HU 2nd-00:17.
 Largest lead - Southwestern Okla. by ; Harding by 25 2nd-00:44
 SWOSU led for 0:00. HU led for 39:43. Game was tied for 0:17.

Score tied - 0 times
 Lead changed - 0 times

Official Basketball Box Score -- Game Totals -- First Half Statistics
Southwestern Okla. vs Harding
1/30/2016 3 p.m. at Searcy, Ark. (Rhodes-Reaves Field House)

Southwestern Okla., 32, 11-8, 7-6 GAC

| ## | Player | S | Total | | | Rebounds | | | PF | TP | A | T/O | Blk | Stl | Min |
|--------|--------------------|---|--------|------------|--------|----------|---------|---------|----|----|---|-----|-----|-----|-----|
| | | | FG-FGA | 3PT FG-FGA | FT-FTA | Off Reb | Def Reb | Tot Reb | | | | | | | |
| 01 | CHAMPION, MARKEISE | g | 4-8 | 4-6 | 0-0 | 0 | 0 | 0 | 0 | 12 | 2 | 0 | 0 | 0 | 19 |
| 03 | WELLS, EMECHE | g | 1-4 | 0-0 | 0-0 | 1 | 4 | 5 | 1 | 2 | 1 | 1 | 0 | 0 | 16 |
| 11 | NEWMEN, JUWAN | f | 0-1 | 0-0 | 0-0 | 0 | 0 | 0 | 1 | 0 | 0 | 0 | 1 | 0 | 4 |
| 22 | JENNINGS, COLLIN | g | 0-3 | 0-2 | 0-0 | 0 | 2 | 2 | 0 | 0 | 1 | 0 | 1 | 0 | 11 |
| 33 | COLLINS, MARTELL | f | 3-8 | 1-3 | 2-2 | 0 | 3 | 3 | 0 | 9 | 0 | 0 | 0 | 0 | 18 |
| 00 | BATTISTI, COOPER | | 0-0 | 0-0 | 0-0 | 0 | 0 | 0 | 1 | 0 | 0 | 0 | 0 | 0 | 1 |
| 04 | HAMMONDS, GARRETT | | 0-0 | 0-0 | 0-0 | 0 | 0 | 0 | 0 | 0 | 0 | 0 | 0 | 0 | 0 |
| 13 | WILLIS, OLIVER | | 0-0 | 0-0 | 0-0 | 0 | 0 | 0 | 0 | 0 | 0 | 0 | 0 | 0 | 0 |
| 15 | FRANKLIN, WESLEY | | 1-2 | 0-1 | 0-0 | 1 | 1 | 2 | 1 | 2 | 0 | 0 | 0 | 0 | 6 |
| 20 | LEWALLEN, LUKE | | 0-0 | 0-0 | 0-0 | 0 | 0 | 0 | 1 | 0 | 0 | 0 | 0 | 0 | 3 |
| 21 | SHOEMAKER, NICK | | 1-6 | 1-6 | 0-0 | 0 | 2 | 2 | 0 | 3 | 0 | 0 | 0 | 0 | 12 |
| 35 | OJO, AYO | | 2-4 | 0-0 | 0-0 | 0 | 5 | 5 | 0 | 4 | 0 | 0 | 0 | 0 | 10 |
| TEAM | | | | | | 0 | 2 | 2 | 0 | | | | | | |
| Totals | | | 12-36 | 6-18 | 2-2 | 2 | 19 | 21 | 5 | 32 | 4 | 1 | 2 | 0 | 100 |

FG % Half: 12-36 33.3%
 3FG % Half: 6-18 33.3%
 FT % Half: 2-2 100.0%

Harding, 45, 12-6, 11-2 GAC

| ## | Player | S | Total | | | Rebounds | | | PF | TP | A | T/O | Blk | Stl | Min |
|--------|--------------------|---|--------|------------|--------|----------|---------|---------|----|----|----|-----|-----|-----|-----|
| | | | FG-FGA | 3PT FG-FGA | FT-FTA | Off Reb | Def Reb | Tot Reb | | | | | | | |
| 03 | ANTHONY, REGGIE | g | 3-6 | 0-0 | 0-0 | 1 | 3 | 4 | 0 | 6 | 2 | 0 | 1 | 0 | 13 |
| 15 | GIBSON, JACOB | g | 4-10 | 2-5 | 0-0 | 1 | 4 | 5 | 1 | 10 | 4 | 0 | 0 | 0 | 16 |
| 21 | FRANCIS, WILL | g | 2-3 | 2-3 | 0-0 | 0 | 4 | 4 | 1 | 6 | 5 | 0 | 0 | 0 | 19 |
| 23 | MCNAIR, BLAKE | g | 2-7 | 1-3 | 0-0 | 0 | 2 | 2 | 0 | 5 | 1 | 0 | 0 | 0 | 17 |
| 50 | EGGLESTON, BRADEN | f | 1-3 | 0-0 | 0-0 | 0 | 2 | 2 | 0 | 2 | 1 | 0 | 0 | 0 | 11 |
| 02 | BAILEY, MICAH | | 0-0 | 0-0 | 0-0 | 0 | 0 | 0 | 0 | 0 | 0 | 0 | 0 | 0 | 0 |
| 04 | WARD, ZAC | | 2-2 | 0-0 | 0-0 | 0 | 1 | 1 | 0 | 4 | 0 | 0 | 0 | 0 | 8 |
| 12 | ROARK, JACOB | | 0-0 | 0-0 | 0-0 | 0 | 0 | 0 | 0 | 0 | 0 | 0 | 0 | 0 | 0 |
| 14 | YATES, DAWSON | | 0-0 | 0-0 | 0-0 | 0 | 0 | 0 | 0 | 0 | 0 | 0 | 0 | 0 | 0 |
| 22 | HUDSON, JOHN | | 1-1 | 1-1 | 0-0 | 0 | 0 | 0 | 1 | 3 | 1 | 0 | 0 | 0 | 6 |
| 24 | BURRELL, ANTOINE | | 0-0 | 0-0 | 0-0 | 0 | 0 | 0 | 0 | 0 | 0 | 0 | 0 | 0 | 1 |
| 40 | KIRBY, MITCHELL | | 0-0 | 0-0 | 0-0 | 0 | 0 | 0 | 0 | 0 | 0 | 0 | 0 | 0 | 0 |
| 42 | ANDELKOVIC, STEFAN | | 3-7 | 3-5 | 0-0 | 0 | 6 | 6 | 1 | 9 | 0 | 0 | 0 | 0 | 9 |
| TEAM | | | | | | 0 | 0 | 0 | 0 | | | | | | |
| Totals | | | 18-39 | 9-17 | 0-0 | 2 | 22 | 24 | 4 | 45 | 14 | 0 | 1 | 0 | 100 |

FG % Half: 18-39 46.2%
 3FG % Half: 9-17 52.9%
 FT % Half: 0-0 0%

Officials: John Lartigue, Butch Parmley and Blake Thomas
 Technical Fouls: Southwestern Okla.- None, Harding- None.

| Score by periods | 1st | 2nd | Total |
|--------------------|-----|-----|-------|
| Southwestern Okla. | 32 | 27 | 59 |
| Harding | 45 | 39 | 84 |

| Points | In Paint | Off T/O | 2nd Chance | Fast Break | Bench |
|--------|----------|---------|------------|------------|-------|
| SWOSU | 8 | 0 | 2 | 0 | 9 |
| HU | 14 | 0 | 5 | 2 | 16 |

Last FG - SWOSU 1st-00:17, HU 1st-00:01.
 SWOSU led for 0:00. HU led for 19:43. Game was tied for 0:17.

Score tied - 0 times
 Lead changed - 0 times

Southwestern Okla. vs Harding
1/30/2016; 3 p.m. at Searcy, Ark. (Rhodes-Reaves Field House)
Period 1 Play-By-Play

| VISITORS: Southwestern Okla. | Time | Score | Margin | HOME: Harding |
|------------------------------------|-------|-------|--------|--------------------------------------|
| | 19:43 | 2-0 | H 2 | GOOD! JUMPER by ANTHONY,REGGIE [PNT] |
| MISSED 3PTR by CHAMPION,MARKEISE | 19:29 | | | |
| | 19:29 | | | REBOUND (DEF) by FRANCIS,WILL |
| | 19:20 | | | MISSED LAYUP by EGGLESTON,BRADEN |
| BLOCK by NEWMEN,JUWAN | 19:20 | | | |
| REBOUND (DEF) by COLLINS,MARTELL | 19:18 | | | |
| MISSED JUMPER by COLLINS,MARTELL | 19:14 | | | |
| | 19:14 | | | REBOUND (DEF) by GIBSON,JACOB |
| FOUL by NEWMEN,JUWAN | 19:12 | | | |
| | 19:00 | 5-0 | H 5 | GOOD! 3PTR by GIBSON,JACOB |
| | 19:00 | | | ASSIST by FRANCIS,WILL |
| MISSED LAYUP by NEWMEN,JUWAN | 18:34 | | | |
| | 18:34 | | | REBOUND (DEF) by ANTHONY,REGGIE |
| | 18:26 | | | MISSED LAYUP by MCNAIR,BLAKE |
| BLOCK by JENNINGS,COLLIN | 18:26 | | | |
| REBOUND (DEF) by TEAM | 18:24 | | | |
| MISSED LAYUP by JENNINGS,COLLIN | 18:11 | | | |
| | 18:11 | | | REBOUND (DEF) by FRANCIS,WILL |
| | 17:56 | 8-0 | H 8 | GOOD! 3PTR by GIBSON,JACOB |
| | 17:56 | | | ASSIST by ANTHONY,REGGIE |
| GOOD! JUMPER by WELLS,EMECHÉ [PNT] | 17:40 | 8-2 | H 6 | |
| ASSIST by JENNINGS,COLLIN | 17:40 | | | |
| | 17:13 | 10-2 | H 8 | GOOD! JUMPER by GIBSON,JACOB [PNT] |
| | 17:13 | | | ASSIST by EGGLESTON,BRADEN |
| MISSED 3PTR by JENNINGS,COLLIN | 16:48 | | | |
| | 16:48 | | | REBOUND (DEF) by GIBSON,JACOB |
| | 16:38 | 13-2 | H 11 | GOOD! 3PTR by MCNAIR,BLAKE |
| | 16:38 | | | ASSIST by GIBSON,JACOB |
| | 16:05 | | | FOUL by FRANCIS,WILL |
| SUB IN: OJO,AYO | 16:05 | | | |
| SUB IN: SHOEMAKER,NICK | 16:05 | | | |
| SUB IN: LEWALLEN,LUKE | 16:05 | | | |
| SUB OUT: WELLS,EMECHÉ | 16:05 | | | |
| SUB OUT: NEWMEN,JUWAN | 16:05 | | | |
| SUB OUT: JENNINGS,COLLIN | 16:05 | | | |
| MISSED 3PTR by SHOEMAKER,NICK | 16:03 | | | |
| | 16:03 | | | REBOUND (DEF) by ANTHONY,REGGIE |
| | 15:51 | | | MISSED 3PTR by GIBSON,JACOB |
| REBOUND (DEF) by COLLINS,MARTELL | 15:51 | | | |
| MISSED 3PTR by SHOEMAKER,NICK | 15:36 | | | |
| | 15:36 | | | REBOUND (DEF) by EGGLESTON,BRADEN |
| | 15:28 | | | MISSED 3PTR by GIBSON,JACOB |
| REBOUND (DEF) by OJO,AYO | 15:28 | | | |
| MISSED LAYUP by CHAMPION,MARKEISE | 15:21 | | | |
| | 15:21 | | | REBOUND (DEF) by FRANCIS,WILL |
| | 15:00 | 15-2 | H 13 | GOOD! JUMPER by MCNAIR,BLAKE |
| GOOD! JUMPER by OJO,AYO | 14:41 | 15-4 | H 11 | |
| ASSIST by CHAMPION,MARKEISE | 14:41 | | | |
| | 14:27 | | | MISSED LAYUP by GIBSON,JACOB |
| | 14:27 | | | REBOUND (OFF) by ANTHONY,REGGIE |
| | 14:23 | 18-4 | H 14 | GOOD! 3PTR by FRANCIS,WILL |
| | 14:23 | | | ASSIST by ANTHONY,REGGIE |
| GOOD! 3PTR by SHOEMAKER,NICK | 14:02 | 18-7 | H 11 | |

| VISITORS: Southwestern Okla. | Time | Score | Margin | HOME: Harding |
|----------------------------------|-------|-------|--------|------------------------------------|
| FOUL by LEWALLEN,LUKE | 13:50 | | | |
| | 13:50 | | | TIMEOUT MEDIA |
| SUB IN: WELLS,EMECHE | 13:50 | | | |
| SUB IN: JENNINGS,COLLIN | 13:50 | | | |
| SUB OUT: COLLINS,MARTELL | 13:50 | | | |
| SUB OUT: LEWALLEN,LUKE | 13:50 | | | |
| | 13:50 | | | SUB IN: HUDSON,JOHN |
| | 13:50 | | | SUB IN: ANDELKOVIC,STEFAN |
| | 13:50 | | | SUB OUT: GIBSON,JACOB |
| | 13:50 | | | SUB OUT: EGGLESTON,BRADEN |
| | 13:45 | | | MISSED JUMPER by MCNAIR,BLAKE |
| REBOUND (DEF) by OJO,AYO | 13:45 | | | |
| MISSED 3PTR by CHAMPION,MARKEISE | 13:30 | | | |
| REBOUND (OFF) by WELLS,EMECHE | 13:30 | | | |
| MISSED LAYUP by WELLS,EMECHE | 13:27 | | | |
| | 13:27 | | | BLOCK by ANTHONY,REGGIE |
| | 13:26 | | | REBOUND (DEF) by MCNAIR,BLAKE |
| | 13:18 | | | MISSED LAYUP by ANTHONY,REGGIE |
| REBOUND (DEF) by OJO,AYO | 13:18 | | | |
| GOOD! 3PTR by CHAMPION,MARKEISE | 13:10 | 18-10 | H 8 | |
| | 12:50 | | | MISSED 3PTR by ANDELKOVIC,STEFAN |
| REBOUND (DEF) by JENNINGS,COLLIN | 12:50 | | | |
| MISSED 3PTR by SHOEMAKER,NICK | 12:37 | | | |
| | 12:37 | | | REBOUND (DEF) by MCNAIR,BLAKE |
| | 12:26 | | | MISSED LAYUP by ANDELKOVIC,STEFAN |
| REBOUND (DEF) by WELLS,EMECHE | 12:26 | | | |
| MISSED LAYUP by WELLS,EMECHE | 12:20 | | | |
| | 12:20 | | | REBOUND (DEF) by ANDELKOVIC,STEFAN |
| FOUL by WELLS,EMECHE | 12:17 | | | |
| SUB IN: FRANKLIN,WESLEY | 12:17 | | | |
| SUB IN: BATTISTI,COOPER | 12:17 | | | |
| SUB IN: COLLINS,MARTELL | 12:17 | | | |
| SUB OUT: CHAMPION,MARKEISE | 12:17 | | | |
| SUB OUT: WELLS,EMECHE | 12:17 | | | |
| SUB OUT: OJO,AYO | 12:17 | | | |
| | 12:17 | | | SUB IN: BURRELL,ANTOINE |
| | 12:17 | | | SUB IN: WARD,ZAC |
| | 12:17 | | | SUB IN: EGGLESTON,BRADEN |
| | 12:17 | | | SUB OUT: HUDSON,JOHN |
| | 12:17 | | | SUB OUT: MCNAIR,BLAKE |
| | 12:17 | | | SUB OUT: ANDELKOVIC,STEFAN |
| | 12:01 | | | MISSED LAYUP by ANDELKOVIC,STEFAN |
| REBOUND (DEF) by COLLINS,MARTELL | 12:01 | | | |
| | 11:54 | | | SUB IN: GIBSON,JACOB |
| | 11:54 | | | SUB OUT: FRANCIS,WILL |
| MISSED JUMPER by COLLINS,MARTELL | 11:53 | | | |
| | 11:53 | | | REBOUND (DEF) by ANTHONY,REGGIE |
| FOUL by BATTISTI,COOPER | 11:51 | | | |
| | 11:42 | | | TIMEOUT media |
| SUB IN: CHAMPION,MARKEISE | 11:42 | | | |
| SUB IN: WELLS,EMECHE | 11:42 | | | |
| SUB OUT: BATTISTI,COOPER | 11:42 | | | |
| SUB OUT: SHOEMAKER,NICK | 11:42 | | | |
| | 11:42 | | | SUB IN: HUDSON,JOHN |
| | 11:42 | | | SUB IN: ANDELKOVIC,STEFAN |
| | 11:42 | | | SUB OUT: BURRELL,ANTOINE |
| | 11:42 | | | SUB OUT: EGGLESTON,BRADEN |
| | 11:32 | | | MISSED LAYUP by GIBSON,JACOB |

| VISITORS: Southwestern Okla. | Time | Score | Margin | HOME: Harding |
|-----------------------------------|-------|-------|--------|------------------------------------|
| REBOUND (DEF) by WELLS,EMEACHE | 11:32 | | | |
| MISSED 3PTR by FRANKLIN,WESLEY | 11:12 | | | |
| | 11:12 | | | REBOUND (DEF) by GIBSON,JACOB |
| | 10:58 | | | MISSED JUMPER by ANTHONY,REGGIE |
| REBOUND (DEF) by FRANKLIN,WESLEY | 10:58 | | | |
| | 10:51 | | | FOUL by HUDSON,JOHN |
| SUB IN: SHOEMAKER,NICK | 10:51 | | | |
| SUB OUT: JENNINGS,COLLIN | 10:51 | | | |
| | 10:51 | | | SUB IN: FRANCIS,WILL |
| | 10:51 | | | SUB OUT: ANTHONY,REGGIE |
| TURNOVER by WELLS,EMEACHE | 10:40 | | | |
| | 10:28 | | | MISSED 3PTR by ANDELKOVIC,STEFAN |
| REBOUND (DEF) by SHOEMAKER,NICK | 10:28 | | | |
| MISSED 3PTR by COLLINS,MARTELL | 10:05 | | | |
| | 10:05 | | | REBOUND (DEF) by ANDELKOVIC,STEFAN |
| | 09:58 | 21-10 | H 11 | GOOD! 3PTR by HUDSON,JOHN |
| | 09:58 | | | ASSIST by GIBSON,JACOB |
| MISSED LAYUP by CHAMPION,MARKEISE | 09:33 | | | |
| | 09:33 | | | REBOUND (DEF) by WARD,ZAC |
| | 09:24 | 24-10 | H 14 | GOOD! 3PTR by ANDELKOVIC,STEFAN |
| | 09:24 | | | ASSIST by FRANCIS,WILL |
| TIMEOUT 30SEC | 09:22 | | | |
| SUB IN: OJO,AYO | 09:22 | | | |
| SUB OUT: FRANKLIN,WESLEY | 09:22 | | | |
| | 09:22 | | | SUB IN: MCNAIR,BLAKE |
| | 09:22 | | | SUB OUT: HUDSON,JOHN |
| | 09:09 | | | FOUL by GIBSON,JACOB |
| MISSED LAYUP by COLLINS,MARTELL | 08:53 | | | |
| | 08:53 | | | REBOUND (DEF) by FRANCIS,WILL |
| | 08:26 | 27-10 | H 17 | GOOD! 3PTR by ANDELKOVIC,STEFAN |
| | 08:26 | | | ASSIST by FRANCIS,WILL |
| MISSED 3PTR by SHOEMAKER,NICK | 08:12 | | | |
| | 08:12 | | | REBOUND (DEF) by GIBSON,JACOB |
| | 08:03 | 29-10 | H 19 | GOOD! LAYUP by WARD,ZAC [FB/PNT] |
| | 08:03 | | | ASSIST by GIBSON,JACOB |
| MISSED LAYUP by OJO,AYO | 07:44 | | | |
| | 07:44 | | | REBOUND (DEF) by ANDELKOVIC,STEFAN |
| | 07:31 | 32-10 | H 22 | GOOD! 3PTR by FRANCIS,WILL |
| | 07:31 | | | ASSIST by MCNAIR,BLAKE |
| MISSED LAYUP by WELLS,EMEACHE | 07:12 | | | |
| | 07:12 | | | REBOUND (DEF) by ANDELKOVIC,STEFAN |
| | 07:00 | | | MISSED 3PTR by MCNAIR,BLAKE |
| REBOUND (DEF) by WELLS,EMEACHE | 07:00 | | | |
| GOOD! 3PTR by CHAMPION,MARKEISE | 06:46 | 32-13 | H 19 | |
| | 06:32 | | | MISSED JUMPER by MCNAIR,BLAKE |
| REBOUND (DEF) by SHOEMAKER,NICK | 06:32 | | | |
| MISSED JUMPER by OJO,AYO | 06:19 | | | |
| | 06:19 | | | REBOUND (DEF) by ANDELKOVIC,STEFAN |
| | 06:01 | | | MISSED 3PTR by GIBSON,JACOB |
| REBOUND (DEF) by OJO,AYO | 06:01 | | | |
| MISSED 3PTR by COLLINS,MARTELL | 05:39 | | | |
| | 05:39 | | | REBOUND (DEF) by ANDELKOVIC,STEFAN |
| | 05:19 | 34-13 | H 21 | GOOD! LAYUP by WARD,ZAC [PNT] |
| GOOD! JUMPER by OJO,AYO | 05:02 | 34-15 | H 19 | |
| ASSIST by CHAMPION,MARKEISE | 05:02 | | | |
| | 04:44 | 37-15 | H 22 | GOOD! 3PTR by ANDELKOVIC,STEFAN |
| | 04:44 | | | ASSIST by FRANCIS,WILL |
| GOOD! 3PTR by CHAMPION,MARKEISE | 04:30 | 37-18 | H 19 | |

| VISITORS: Southwestern Okla. | Time | Score | Margin | HOME: Harding |
|--------------------------------------|-------|-------|--------|---------------------------------------|
| | 04:18 | | | MISSED LAYUP by GIBSON,JACOB |
| REBOUND (DEF) by WELLS,EMEACHE | 04:18 | | | |
| | 04:12 | | | FOUL by ANDELKOVIC,STEFAN |
| TIMEOUT MEDIA | 04:10 | | | |
| GOOD! FT by COLLINS,MARTELL | 04:10 | 37-19 | H 18 | |
| GOOD! FT by COLLINS,MARTELL | 04:10 | 37-20 | H 17 | |
| SUB IN: LEWALLEN,LUKE | 04:10 | | | |
| SUB IN: JENNINGS,COLLIN | 04:10 | | | |
| SUB IN: BATTISTI,COOPER | 04:10 | | | |
| SUB IN: FRANKLIN,WESLEY | 04:10 | | | |
| SUB OUT: OJO,AYO | 04:10 | | | |
| SUB OUT: CHAMPION,MARKEISE | 04:10 | | | |
| SUB OUT: COLLINS,MARTELL | 04:10 | | | |
| SUB OUT: WELLS,EMEACHE | 04:10 | | | |
| | 04:10 | | | SUB IN: EGGLESTON,BRADEN |
| | 04:10 | | | SUB IN: HUDSON,JOHN |
| | 04:10 | | | SUB IN: ANTHONY,REGGIE |
| | 04:10 | | | SUB OUT: GIBSON,JACOB |
| | 04:10 | | | SUB OUT: WARD,ZAC |
| | 04:10 | | | SUB OUT: ANDELKOVIC,STEFAN |
| | 04:00 | | | MISSED 3PTR by MCNAIR,BLAKE |
| REBOUND (DEF) by JENNINGS,COLLIN | 04:00 | | | |
| MISSED 3PTR by SHOEMAKER,NICK | 03:42 | | | |
| REBOUND (OFF) by FRANKLIN,WESLEY | 03:42 | | | |
| GOOD! LAYUP by FRANKLIN,WESLEY [PNT] | 03:36 | 37-22 | H 15 | |
| FOUL by FRANKLIN,WESLEY | 03:15 | | | |
| | 03:15 | | | TIMEOUT MEDIA |
| SUB IN: COLLINS,MARTELL | 03:15 | | | |
| SUB IN: CHAMPION,MARKEISE | 03:15 | | | |
| SUB IN: WELLS,EMEACHE | 03:15 | | | |
| SUB OUT: LEWALLEN,LUKE | 03:15 | | | |
| SUB OUT: SHOEMAKER,NICK | 03:15 | | | |
| SUB OUT: BATTISTI,COOPER | 03:15 | | | |
| | 03:08 | 39-22 | H 17 | GOOD! JUMPER by ANTHONY,REGGIE |
| | 03:08 | | | ASSIST by HUDSON,JOHN |
| GOOD! 3PTR by CHAMPION,MARKEISE | 02:48 | 39-25 | H 14 | |
| ASSIST by WELLS,EMEACHE | 02:48 | | | |
| | 02:27 | | | MISSED JUMPER by EGGLESTON,BRADEN |
| REBOUND (DEF) by TEAM | 02:27 | | | |
| | 02:25 | | | SUB IN: GIBSON,JACOB |
| | 02:25 | | | SUB OUT: HUDSON,JOHN |
| MISSED 3PTR by JENNINGS,COLLIN | 02:13 | | | |
| | 02:13 | | | REBOUND (DEF) by EGGLESTON,BRADEN |
| | 01:58 | | | MISSED 3PTR by FRANCIS,WILL |
| | 01:58 | | | REBOUND (OFF) by GIBSON,JACOB |
| | 01:48 | 41-25 | H 16 | GOOD! LAYUP by EGGLESTON,BRADEN [PNT] |
| | 01:48 | | | ASSIST by GIBSON,JACOB |
| GOOD! LAYUP by COLLINS,MARTELL [PNT] | 01:34 | 41-27 | H 14 | |
| SUB IN: OJO,AYO | 01:19 | | | |
| SUB OUT: FRANKLIN,WESLEY | 01:19 | | | |
| | 01:07 | | | MISSED JUMPER by ANTHONY,REGGIE |
| REBOUND (DEF) by OJO,AYO | 01:07 | | | |
| GOOD! LAYUP by COLLINS,MARTELL [PNT] | 00:53 | 41-29 | H 12 | |
| | 00:36 | 43-29 | H 14 | GOOD! LAYUP by GIBSON,JACOB [PNT] |
| | 00:36 | | | ASSIST by FRANCIS,WILL |
| GOOD! 3PTR by COLLINS,MARTELL | 00:17 | 43-32 | H 11 | |
| | 00:01 | 45-32 | H 13 | GOOD! JUMPER by ANTHONY,REGGIE [PNT] |

Southwestern Okla. 32, Harding 45

| Period 1-only | In Paint | Off T/O | 2nd Chance | Fast Break | Bench | **** |
|----------------------|---------------------|--------------------|-----------------------|-----------------------|--------------|------------------------|
| SWOSU | 8 | 0 | 2 | 0 | 9 | Score tied - 0 times |
| HU | 14 | 0 | 5 | 2 | 16 | Lead changed - 0 times |

Official Basketball Box Score -- Game Totals -- Second Half Statistics
Southwestern Okla. vs Harding
1/30/2016 3 p.m. at Searcy, Ark. (Rhodes-Reaves Field House)

Southwestern Okla., 27, 11-8, 7-6 GAC

| ## | Player | S | Total | | | Rebounds | | | PF | TP | A | TO | Blk | Stl | Min |
|--------|--------------------|---|--------|------------|--------|----------|---------|---------|----|----|---|----|-----|-----|-----|
| | | | FG-FGA | 3PT FG-FGA | FT-FTA | Off Reb | Def Reb | Tot Reb | | | | | | | |
| 01 | CHAMPION, MARKEISE | g | 1-3 | 1-3 | 0-0 | 0 | 1 | 1 | 0 | 3 | 0 | 2 | 0 | 0 | 14 |
| 03 | WELLS, EMECHE | g | 1-2 | 0-1 | 0-0 | 0 | 2 | 2 | 0 | 2 | 1 | 1 | 0 | 2 | 15 |
| 11 | NEWMEN, JUWAN | f | 0-0 | 0-0 | 0-0 | 0 | 0 | 0 | 0 | 0 | 0 | 0 | 0 | 0 | |
| 22 | JENNINGS, COLLIN | g | 1-2 | 1-2 | 2-2 | 0 | 2 | 2 | 1 | 5 | 0 | 1 | 0 | 0 | 13 |
| 33 | COLLINS, MARTELL | f | 3-10 | 0-2 | 2-2 | 1 | 1 | 2 | 1 | 8 | 0 | 2 | 0 | 0 | 15 |
| 00 | BATTISTI, COOPER | | 1-3 | 0-1 | 0-0 | 1 | 0 | 1 | 1 | 2 | 0 | 0 | 0 | 0 | 7 |
| 04 | HAMMONDS, GARRETT | | 0-1 | 0-1 | 0-0 | 0 | 0 | 0 | 0 | 0 | 0 | 0 | 0 | 0 | 2 |
| 13 | WILLIS, OLIVER | | 1-1 | 0-0 | 1-2 | 3 | 1 | 4 | 0 | 3 | 0 | 0 | 0 | 0 | 4 |
| 15 | FRANKLIN, WESLEY | | 0-2 | 0-1 | 0-0 | 0 | 1 | 1 | 1 | 0 | 0 | 0 | 0 | 0 | 5 |
| 20 | LEWALLEN, LUKE | | 0-1 | 0-1 | 2-2 | 0 | 1 | 1 | 1 | 2 | 0 | 0 | 0 | 0 | 7 |
| 21 | SHOEMAKER, NICK | | 0-3 | 0-2 | 0-0 | 0 | 0 | 0 | 0 | 0 | 0 | 0 | 0 | 0 | 5 |
| 35 | OJO, AYO | | 1-5 | 0-0 | 0-0 | 3 | 2 | 5 | 3 | 2 | 0 | 1 | 0 | 1 | 13 |
| TEAM | | | | | | 1 | 3 | 4 | 0 | | | 0 | | | |
| Totals | | | 9-33 | 2-14 | 7-8 | 9 | 14 | 23 | 8 | 27 | 1 | 7 | 0 | 3 | 100 |

FG % Half: 9-33 27.3%
 3FG % Half: 2-14 33.3%
 FT % Half: 7-8 87.5%

Harding, 39, 12-6, 11-2 GAC

| ## | Player | S | Total | | | Rebounds | | | PF | TP | A | TO | Blk | Stl | Min |
|--------|--------------------|---|--------|------------|--------|----------|---------|---------|----|----|---|----|-----|-----|-----|
| | | | FG-FGA | 3PT FG-FGA | FT-FTA | Off Reb | Def Reb | Tot Reb | | | | | | | |
| 03 | ANTHONY, REGGIE | g | 2-4 | 0-1 | 1-2 | 1 | 2 | 3 | 0 | 5 | 1 | 1 | 0 | 1 | 17 |
| 15 | GIBSON, JACOB | g | 5-8 | 1-4 | 0-0 | 1 | 1 | 2 | 2 | 11 | 1 | 0 | 0 | 0 | 14 |
| 21 | FRANCIS, WILL | g | 0-2 | 0-1 | 0-0 | 0 | 0 | 0 | 1 | 0 | 1 | 0 | 0 | 0 | 19 |
| 23 | MCNAIR, BLAKE | g | 3-5 | 2-4 | 2-2 | 0 | 4 | 4 | 1 | 10 | 0 | 1 | 0 | 0 | 19 |
| 50 | EGGLESTON, BRADEN | f | 0-0 | 0-0 | 0-0 | 0 | 1 | 1 | 1 | 0 | 1 | 1 | 0 | 0 | 6 |
| 02 | BAILEY, MICAH | | 1-2 | 0-0 | 0-0 | 0 | 1 | 1 | 1 | 2 | 0 | 0 | 0 | 0 | 2 |
| 04 | WARD, ZAC | | 0-1 | 0-1 | 1-2 | 0 | 0 | 0 | 1 | 1 | 1 | 0 | 0 | 3 | 7 |
| 12 | ROARK, JACOB | | 1-1 | 1-1 | 0-0 | 0 | 0 | 0 | 0 | 3 | 0 | 0 | 0 | 0 | 1 |
| 14 | YATES, DAWSON | | 0-0 | 0-0 | 0-0 | 1 | 0 | 1 | 0 | 0 | 0 | 0 | 0 | 0 | 1 |
| 22 | HUDSON, JOHN | | 0-0 | 0-0 | 0-0 | 0 | 0 | 0 | 0 | 0 | 0 | 0 | 0 | 0 | 0 |
| 24 | BURRELL, ANTOINE | | 0-0 | 0-0 | 0-0 | 0 | 0 | 0 | 0 | 0 | 0 | 0 | 0 | 0 | 1 |
| 40 | KIRBY, MITCHELL | | 0-0 | 0-0 | 0-0 | 0 | 0 | 0 | 0 | 0 | 0 | 0 | 0 | 0 | 1 |
| 42 | ANDELKOVIC, STEFAN | | 2-4 | 2-3 | 1-6 | 0 | 4 | 4 | 1 | 7 | 0 | 0 | 0 | 0 | 12 |
| TEAM | | | | | | 0 | 1 | 1 | 0 | | | 0 | | | |
| Totals | | | 14-27 | 6-15 | 5-12 | 3 | 14 | 17 | 8 | 39 | 5 | 3 | 0 | 4 | 100 |

FG % Half: 14-27 51.9%
 3FG % Half: 6-15 52.9%
 FT % Half: 5-12 41.7%

Officials: John Lartigue, Butch Parmley and Blake Thomas
 Technical Fouls: Southwestern Okla.- None, Harding- None.

| Score by periods | 1st | 2nd | Total |
|--------------------|-----|-----|-------|
| Southwestern Okla. | 32 | 27 | 59 |
| Harding | 45 | 39 | 84 |

| Points | In Paint | Off T/O | 2nd Chance | Fast Break | Bench |
|--------|----------|---------|------------|------------|-------|
| SWOSU | 10 | 2 | 7 | 2 | 9 |
| HU | 14 | 8 | 8 | 0 | 13 |

Last FG - SWOSU 2nd-01:13, HU 2nd-00:17.
 SWOSU led for 0:00. HU led for 20:00. Game was tied for 0:00.

Score tied - 0 times
 Lead changed - 0 times

Southwestern Okla. vs Harding
1/30/2016; 3 p.m. at Searcy, Ark. (Rhodes-Reaves Field House)
Period 2 Play-By-Play

| VISITORS: Southwestern Okla. | Time | Score | Margin | HOME: Harding |
|--------------------------------------|-------|-------|--------|------------------------------------|
| SUB IN: OJO,AYO | 20:00 | | | |
| SUB OUT: NEWMEN,JUWAN | 20:00 | | | |
| MISSED JUMPER by OJO,AYO | 19:46 | | | |
| | 19:46 | | | REBOUND (DEF) by ANTHONY,REGGIE |
| | 19:32 | | | MISSED 3PTR by GIBSON,JACOB |
| REBOUND (DEF) by OJO,AYO | 19:32 | | | |
| | 19:30 | | | FOUL by EGGLESTON,BRADEN |
| | 19:21 | | | FOUL by GIBSON,JACOB |
| GOOD! FT by JENNINGS,COLLIN | 19:21 | 45-33 | H 12 | |
| GOOD! FT by JENNINGS,COLLIN | 19:21 | 45-34 | H 11 | |
| | 19:12 | | | TURNOVER by EGGLESTON,BRADEN |
| STEAL by OJO,AYO | 19:10 | | | |
| TURNOVER by COLLINS,MARTELL | 18:52 | | | |
| | 18:32 | | | MISSED JUMPER by FRANCIS,WILL |
| REBOUND (DEF) by TEAM | 18:32 | | | |
| GOOD! LAYUP by WELLS,EMECHE [PNT] | 18:10 | 45-36 | H 9 | |
| | 17:49 | 48-36 | H 12 | GOOD! 3PTR by MCNAIR,BLAKE |
| | 17:49 | | | ASSIST by FRANCIS,WILL |
| TURNOVER by CHAMPION,MARKEISE | 17:28 | | | |
| | 17:27 | | | STEAL by ANTHONY,REGGIE |
| | 17:18 | 51-36 | H 15 | GOOD! 3PTR by MCNAIR,BLAKE |
| MISSED 3PTR by COLLINS,MARTELL | 17:00 | | | |
| | 17:00 | | | REBOUND (DEF) by MCNAIR,BLAKE |
| | 16:50 | 53-36 | H 17 | GOOD! JUMPER by GIBSON,JACOB [PNT] |
| MISSED 3PTR by CHAMPION,MARKEISE | 16:31 | | | |
| | 16:31 | | | REBOUND (DEF) by MCNAIR,BLAKE |
| | 16:22 | | | MISSED 3PTR by MCNAIR,BLAKE |
| REBOUND (DEF) by WELLS,EMECHE | 16:22 | | | |
| GOOD! LAYUP by COLLINS,MARTELL [PNT] | 16:13 | 53-38 | H 15 | |
| | 16:02 | | | MISSED 3PTR by GIBSON,JACOB |
| | 16:02 | | | REBOUND (OFF) by ANTHONY,REGGIE |
| | 15:53 | 55-38 | H 17 | GOOD! LAYUP by GIBSON,JACOB [PNT] |
| | 15:53 | | | ASSIST by EGGLESTON,BRADEN |
| MISSED 3PTR by CHAMPION,MARKEISE | 15:29 | | | |
| | 15:29 | | | REBOUND (DEF) by MCNAIR,BLAKE |
| | 15:19 | 57-38 | H 19 | GOOD! JUMPER by MCNAIR,BLAKE [PNT] |
| GOOD! 3PTR by JENNINGS,COLLIN | 15:04 | 57-41 | H 16 | |
| | 14:49 | | | MISSED 3PTR by MCNAIR,BLAKE |
| REBOUND (DEF) by CHAMPION,MARKEISE | 14:49 | | | |
| MISSED 3PTR by JENNINGS,COLLIN | 14:40 | | | |
| REBOUND (OFF) by OJO,AYO | 14:40 | | | |
| MISSED LAYUP by OJO,AYO | 14:36 | | | |
| | 14:36 | | | REBOUND (DEF) by EGGLESTON,BRADEN |
| | 14:30 | | | MISSED 3PTR by FRANCIS,WILL |
| REBOUND (DEF) by OJO,AYO | 14:30 | | | |
| MISSED JUMPER by COLLINS,MARTELL | 14:05 | | | |
| | 14:05 | | | REBOUND (DEF) by GIBSON,JACOB |
| | 13:42 | 59-41 | H 18 | GOOD! JUMPER by GIBSON,JACOB |
| | 13:40 | | | TIMEOUT 30SEC |
| SUB IN: WILLIS,OLIVER | 13:40 | | | |
| SUB IN: LEWALLEN,LUKE | 13:40 | | | |
| SUB IN: SHOEMAKER,NICK | 13:40 | | | |
| SUB OUT: WELLS,EMECHE | 13:40 | | | |

| VISITORS: Southwestern Okla. | Time | Score | Margin | HOME: Harding |
|---|-------|-------|--------|------------------------------------|
| SUB OUT: OJO,AYO | 13:40 | | | |
| SUB OUT: JENNINGS,COLLIN | 13:40 | | | |
| | 13:40 | | | SUB IN: ANDELKOVIC,STEFAN |
| | 13:40 | | | SUB IN: WARD,ZAC |
| | 13:40 | | | SUB OUT: ANTHONY,REGGIE |
| | 13:40 | | | SUB OUT: EGGLESTON,BRADEN |
| MISSED 3PTR by LEWALLEN,LUKE | 13:26 | | | |
| | 13:26 | | | REBOUND (DEF) by TEAM |
| | 13:22 | | | TIMEOUT MEDIA |
| | 13:05 | | | MISSED 3PTR by GIBSON,JACOB |
| REBOUND (DEF) by TEAM | 13:05 | | | |
| TURNOVER by COLLINS,MARTELL | 12:47 | | | |
| | 12:31 | 61-41 | H 20 | GOOD! LAYUP by GIBSON,JACOB [PNT] |
| | 12:21 | | | FOUL by WARD,ZAC |
| SUB IN: BATTISTI,COOPER | 12:21 | | | |
| SUB IN: OJO,AYO | 12:21 | | | |
| SUB IN: WELLS,EMECHE | 12:21 | | | |
| SUB OUT: CHAMPION,MARKEISE | 12:21 | | | |
| SUB OUT: WILLIS,OLIVER | 12:21 | | | |
| SUB OUT: LEWALLEN,LUKE | 12:21 | | | |
| | 12:14 | | | FOUL by GIBSON,JACOB |
| | 12:14 | | | SUB IN: ANTHONY,REGGIE |
| | 12:14 | | | SUB OUT: GIBSON,JACOB |
| MISSED 3PTR by SHOEMAKER,NICK | 12:06 | | | |
| REBOUND (DEADB) by TEAM | 12:06 | | | |
| | 12:04 | | | FOUL by MCNAIR,BLAKE |
| MISSED JUMPER by COLLINS,MARTELL | 11:55 | | | |
| REBOUND (OFF) by OJO,AYO | 11:55 | | | |
| GOOD! JUMPER by OJO,AYO | 11:52 | 61-43 | H 18 | |
| FOUL by BATTISTI,COOPER | 11:30 | | | |
| SUB IN: CHAMPION,MARKEISE | 11:30 | | | |
| SUB OUT: BATTISTI,COOPER | 11:30 | | | |
| | 11:29 | | | TURNOVER by MCNAIR,BLAKE |
| STEAL by WELLS,EMECHE | 11:28 | | | |
| MISSED LAYUP by COLLINS,MARTELL | 11:11 | | | |
| REBOUND (OFF) by OJO,AYO | 11:11 | | | |
| TURNOVER by OJO,AYO | 11:09 | | | |
| | 11:09 | | | STEAL by WARD,ZAC |
| | 11:07 | | | TURNOVER by ANTHONY,REGGIE |
| STEAL by WELLS,EMECHE | 11:06 | | | |
| GOOD! LAYUP by COLLINS,MARTELL [FB/PNT] | 11:03 | 61-45 | H 16 | |
| ASSIST by WELLS,EMECHE | 11:03 | | | |
| | 10:48 | 64-45 | H 19 | GOOD! 3PTR by ANDELKOVIC,STEFAN |
| | 10:48 | | | ASSIST by ANTHONY,REGGIE |
| MISSED 3PTR by SHOEMAKER,NICK | 10:26 | | | |
| | 10:26 | | | REBOUND (DEF) by ANDELKOVIC,STEFAN |
| | 10:13 | | | MISSED 3PTR by ANDELKOVIC,STEFAN |
| REBOUND (DEF) by COLLINS,MARTELL | 10:13 | | | |
| MISSED JUMPER by OJO,AYO | 10:00 | | | |
| | 10:00 | | | REBOUND (DEF) by MCNAIR,BLAKE |
| FOUL by OJO,AYO | 09:36 | | | |
| | 09:36 | 65-45 | H 20 | GOOD! FT by ANDELKOVIC,STEFAN |
| | 09:36 | | | MISSED FT by ANDELKOVIC,STEFAN |
| REBOUND (DEF) by LEWALLEN,LUKE | 09:36 | | | |
| SUB IN: JENNINGS,COLLIN | 09:36 | | | |
| SUB IN: LEWALLEN,LUKE | 09:36 | | | |
| SUB IN: FRANKLIN,WESLEY | 09:36 | | | |
| SUB OUT: OJO,AYO | 09:36 | | | |

| VISITORS: Southwestern Okla. | Time | Score | Margin | HOME: Harding |
|--------------------------------------|-------|-------|--------|-------------------------------------|
| SUB OUT: WELLS,EMEACHE | 09:36 | | | |
| SUB OUT: SHOEMAKER,NICK | 09:36 | | | |
| MISSED JUMPER by COLLINS,MARTELL | 09:23 | | | |
| | 09:23 | | | REBOUND (DEF) by ANDELKOVIC,STEFAN |
| FOUL by JENNINGS,COLLIN | 09:09 | | | |
| | 09:09 | 66-45 | H 21 | GOOD! FT by MCNAIR,BLAKE |
| | 09:09 | 67-45 | H 22 | GOOD! FT by MCNAIR,BLAKE |
| MISSED JUMPER by FRANKLIN,WESLEY | 08:56 | | | |
| | 08:56 | | | REBOUND (DEF) by ANTHONY,REGGIE |
| | 08:34 | | | MISSED LAYUP by ANTHONY,REGGIE |
| REBOUND (DEF) by TEAM | 08:34 | | | |
| SUB IN: WELLS,EMEACHE | 08:33 | | | |
| SUB IN: BATTISTI,COOPER | 08:33 | | | |
| SUB OUT: CHAMPION,MARKEISE | 08:33 | | | |
| SUB OUT: COLLINS,MARTELL | 08:33 | | | |
| GOOD! LAYUP by BATTISTI,COOPER [PNT] | 08:24 | 67-47 | H 20 | |
| | 08:08 | | | MISSED 3PTR by WARD,ZAC |
| REBOUND (DEF) by JENNINGS,COLLIN | 08:08 | | | |
| TURNOVER by JENNINGS,COLLIN | 07:46 | | | |
| | 07:45 | | | STEAL by WARD,ZAC |
| | 07:27 | 69-47 | H 22 | GOOD! LAYUP by ANTHONY,REGGIE [PNT] |
| | 07:27 | | | ASSIST by WARD,ZAC |
| TURNOVER by WELLS,EMEACHE | 07:11 | | | |
| | 07:09 | | | STEAL by WARD,ZAC |
| FOUL by LEWALLEN,LUKE | 07:05 | | | |
| | 07:05 | | | TIMEOUT MEDIA |
| | 07:05 | | | MISSED FT by WARD,ZAC |
| | 07:05 | | | REBOUND (DEADB) by TEAM |
| | 07:05 | 70-47 | H 23 | GOOD! FT by WARD,ZAC |
| SUB IN: COLLINS,MARTELL | 07:05 | | | |
| SUB IN: CHAMPION,MARKEISE | 07:05 | | | |
| SUB IN: OJO,AYO | 07:05 | | | |
| SUB OUT: LEWALLEN,LUKE | 07:05 | | | |
| SUB OUT: FRANKLIN,WESLEY | 07:05 | | | |
| SUB OUT: BATTISTI,COOPER | 07:05 | | | |
| | 07:05 | | | SUB IN: GIBSON,JACOB |
| | 07:05 | | | SUB OUT: WARD,ZAC |
| GOOD! 3PTR by CHAMPION,MARKEISE | 06:51 | 70-50 | H 20 | |
| FOUL by OJO,AYO | 06:28 | | | |
| | 06:28 | | | MISSED FT by ANDELKOVIC,STEFAN |
| | 06:28 | | | REBOUND (DEADB) by TEAM |
| | 06:28 | | | MISSED FT by ANDELKOVIC,STEFAN |
| REBOUND (DEF) by WELLS,EMEACHE | 06:28 | | | |
| TURNOVER by CHAMPION,MARKEISE | 06:09 | | | |
| | 05:52 | | | MISSED 3PTR by ANTHONY,REGGIE |
| REBOUND (DEF) by JENNINGS,COLLIN | 05:52 | | | |
| MISSED 3PTR by COLLINS,MARTELL | 05:35 | | | |
| | 05:35 | | | REBOUND (DEF) by ANDELKOVIC,STEFAN |
| FOUL by COLLINS,MARTELL | 05:12 | | | |
| SUB IN: FRANKLIN,WESLEY | 05:12 | | | |
| SUB IN: WILLIS,OLIVER | 05:12 | | | |
| SUB IN: LEWALLEN,LUKE | 05:12 | | | |
| SUB OUT: WELLS,EMEACHE | 05:12 | | | |
| SUB OUT: COLLINS,MARTELL | 05:12 | | | |
| SUB OUT: OJO,AYO | 05:12 | | | |
| | 05:01 | 73-50 | H 23 | GOOD! 3PTR by ANDELKOVIC,STEFAN |
| | 05:01 | | | ASSIST by GIBSON,JACOB |
| MISSED 3PTR by FRANKLIN,WESLEY | 04:39 | | | |

| VISITORS: Southwestern Okla. | Time | Score | Margin | HOME: Harding |
|----------------------------------|-------|-------|--------|-------------------------------------|
| REBOUND (OFF) by WILLIS,OLIVER | 04:39 | | | |
| | 04:30 | | | FOUL by FRANCIS,WILL |
| MISSED FT by WILLIS,OLIVER | 04:30 | | | |
| REBOUND (DEADB) by TEAM | 04:30 | | | |
| GOOD! FT by WILLIS,OLIVER | 04:30 | 73-51 | H 22 | |
| SUB IN: COLLINS,MARTELL | 04:30 | | | |
| SUB IN: BATTISTI,COOPER | 04:30 | | | |
| SUB OUT: WILLIS,OLIVER | 04:30 | | | |
| SUB OUT: CHAMPION,MARKEISE | 04:30 | | | |
| FOUL by FRANKLIN,WESLEY | 04:11 | | | |
| | 04:11 | | | MISSED FT by ANDELKOVIC,STEFAN |
| | 04:11 | | | REBOUND (DEADB) by TEAM |
| | 04:11 | | | MISSED FT by ANDELKOVIC,STEFAN |
| REBOUND (DEF) by FRANKLIN,WESLEY | 04:11 | | | |
| MISSED LAYUP by BATTISTI,COOPER | 03:53 | | | |
| REBOUND (OFF) by BATTISTI,COOPER | 03:53 | | | |
| MISSED LAYUP by COLLINS,MARTELL | 03:46 | | | |
| REBOUND (OFF) by TEAM | 03:46 | | | |
| TIMEOUT MEDIA | 03:43 | | | |
| SUB IN: OJO,AYO | 03:43 | | | |
| SUB IN: WELLS,EMECHE | 03:43 | | | |
| SUB OUT: FRANKLIN,WESLEY | 03:43 | | | |
| SUB OUT: LEWALLEN,LUKE | 03:43 | | | |
| MISSED 3PTR by WELLS,EMECHE | 03:36 | | | |
| REBOUND (OFF) by COLLINS,MARTELL | 03:36 | | | |
| | 03:32 | | | FOUL by ANDELKOVIC,STEFAN |
| GOOD! FT by COLLINS,MARTELL | 03:32 | 73-52 | H 21 | |
| GOOD! FT by COLLINS,MARTELL | 03:32 | 73-53 | H 20 | |
| | 03:05 | 75-53 | H 22 | GOOD! LAYUP by ANTHONY,REGGIE [PNT] |
| GOOD! JUMPER by COLLINS,MARTELL | 02:46 | 75-55 | H 20 | |
| FOUL by OJO,AYO | 02:28 | | | |
| | 02:28 | 76-55 | H 21 | GOOD! FT by ANTHONY,REGGIE |
| | 02:28 | | | MISSED FT by ANTHONY,REGGIE |
| REBOUND (DEF) by WILLIS,OLIVER | 02:28 | | | |
| SUB IN: WILLIS,OLIVER | 02:28 | | | |
| SUB IN: SHOEMAKER,NICK | 02:28 | | | |
| SUB OUT: JENNINGS,COLLIN | 02:28 | | | |
| SUB OUT: COLLINS,MARTELL | 02:28 | | | |
| MISSED LAYUP by SHOEMAKER,NICK | 02:07 | | | |
| | 02:07 | | | REBOUND (DEF) by ANDELKOVIC,STEFAN |
| | 01:43 | | | MISSED JUMPER by ANDELKOVIC,STEFAN |
| | 01:43 | | | REBOUND (OFF) by GIBSON,JACOB |
| | 01:40 | 79-55 | H 24 | GOOD! 3PTR by GIBSON,JACOB |
| MISSED LAYUP by OJO,AYO | 01:23 | | | |
| REBOUND (OFF) by WILLIS,OLIVER | 01:23 | | | |
| SUB IN: FRANKLIN,WESLEY | 01:21 | | | |
| SUB IN: LEWALLEN,LUKE | 01:21 | | | |
| SUB IN: HAMMONDS,GARRETT | 01:21 | | | |
| SUB OUT: OJO,AYO | 01:21 | | | |
| SUB OUT: SHOEMAKER,NICK | 01:21 | | | |
| SUB OUT: WELLS,EMECHE | 01:21 | | | |
| | 01:21 | | | SUB IN: BURRELL,ANTOINE |
| | 01:21 | | | SUB IN: YATES,DAWSON |
| | 01:21 | | | SUB IN: ROARK,JACOB |
| | 01:21 | | | SUB IN: BAILEY,MICAH |
| | 01:21 | | | SUB OUT: ANDELKOVIC,STEFAN |
| | 01:21 | | | SUB OUT: ANTHONY,REGGIE |
| | 01:21 | | | SUB OUT: FRANCIS,WILL |

| VISITORS: Southwestern Okla. | Time | Score | Margin | HOME: Harding |
|------------------------------------|-------|-------|--------|-----------------------------------|
| | 01:21 | | | SUB OUT: GIBSON,JACOB |
| MISSED 3PTR by HAMMONDS,GARRETT | 01:18 | | | |
| REBOUND (OFF) by WILLIS,OLIVER | 01:18 | | | |
| GOOD! LAYUP by WILLIS,OLIVER [PNT] | 01:13 | 79-57 | H 22 | |
| | 01:07 | | | SUB IN: KIRBY,MITCHELL |
| | 01:07 | | | SUB OUT: MCNAIR,BLAKE |
| | 01:03 | | | MISSED LAYUP by BAILEY,MICAH |
| | 01:03 | | | REBOUND (OFF) by YATES,DAWSON |
| | 00:44 | 82-57 | H 25 | GOOD! 3PTR by ROARK,JACOB |
| | 00:30 | | | FOUL by BAILEY,MICAH |
| GOOD! FT by LEWALLEN,LUKE | 00:30 | 82-58 | H 24 | |
| GOOD! FT by LEWALLEN,LUKE | 00:30 | 82-59 | H 23 | |
| | 00:17 | 84-59 | H 25 | GOOD! LAYUP by BAILEY,MICAH [PNT] |
| MISSED 3PTR by BATTISTI,COOPER | 00:06 | | | |
| | 00:06 | | | REBOUND (DEF) by BAILEY,MICAH |

Southwestern Okla. 59, Harding 84

| Period 2-only | In Paint | Off T/O | 2nd Chance | Fast Break | Bench | **** |
|---------------|-------------|------------|---------------|---------------|-------|------------------------|
| SWOSU | 10 | 2 | 7 | 2 | 9 | Score tied - 0 times |
| HU | 14 | 8 | 8 | 0 | 13 | Lead changed - 0 times |

Southwestern Okla. vs Harding
1/30/2016; 3 p.m. at Searcy, Ark. (Rhodes-Reaves Field House)
Scoring/Runs Reference

| Period 1 | | | Period 2 | | |
|----------------------------|--------------|------------------------------|---------------------------|----------------|------------------------------|
| Southwestern Okla. | Score | Harding | Southwestern Okla. | Score | Harding |
| | 0-2 2 | ANTHONY,JUMPER,- 19:43 | 19:46 - OJO,JUMPER | X | |
| 19:29 - CHAMPION,3PTR | X | | | | X GIBSON,3PTR - 19:32 |
| | | X EGGLESTON,LAYUP - 19:20 | 19:21,-,JENNINGS,FT | 1 33-45 12 | |
| 19:14 - COLLINS,JUMPER | X | | 19:21,-,JENNINGS,FT | 1 34-45 11 | |
| | 0-5 5 | GIBSON,3PTR,-,19:00 | | | TO EGGLESTON TURN - 19:12 |
| 18:34 - NEWMEN,LAYUP | X | | 18:52,-,COLLINS TURN | TO | X FRANCIS,JUMPER - 18:32 |
| | | X MCNAIR,LAYUP - 18:26 | 18:10,- ,WELLS,LAYUP | 2P 36-45 9 | |
| 18:11 - JENNINGS,LAYUP | X | | | 36-48 12 | 3 MCNAIR,3PTR,-,17:49 |
| | 0-8 8 | GIBSON,3PTR,-,17:56 | 17:28,-,CHAMPION TURN | TO | |
| 17:40,- ,WELLS,JUMPER | 2P 2-8 6 | | | 36-51 15 | 3 MCNAIR,3PTR,-,17:18 |
| | 2-10 8 | GIBSON,JUMPER,- 17:13 | 17:00 - COLLINS,3PTR | X | |
| 16:48 - JENNINGS,3PTR | X | | | 36-53 17 | 2P GIBSON,JUMPER,- 16:50 |
| | 2-13 11 | MCNAIR,3PTR,-,16:38 | 16:31 - CHAMPION,3PTR | X | |
| 16:03 - SHOEMAKER,3PTR | X | | | | X MCNAIR,3PTR - 16:22 |
| | | X GIBSON,3PTR - 15:51 | 16:13,- ,COLLINS,LAYUP | 2P 38-53 15 | |
| 15:36 - SHOEMAKER,3PTR | X | | | 38-55 17 | 2P GIBSON,LAYUP,-,15:53 |
| | | X GIBSON,3PTR - 15:28 | 15:29 - CHAMPION,3PTR | X | |
| 15:21 - CHAMPION,LAYUP | X | | | 38-57 19 | 2P MCNAIR,JUMPER,- 15:19 |
| | 2-15 13 | 2 MCNAIR,JUMPER,- 15:00 | 15:04,- ,JENNINGS,3PTR | 3 41-57 16 | |
| 14:41,- ,OJO,JUMPER | 2 4-15 11 | | | | X MCNAIR,3PTR - 14:49 |
| | | X GIBSON,LAYUP - 14:27 | 14:40 - JENNINGS,3PTR | X | |
| | 4-18 14 | 3 FRANCIS,3PTR,-,14:23 | 14:36 - OJO,LAYUP | X | |
| 14:02,- ,SHOEMAKER,3PTR | 3 7-18 11 | | | | X FRANCIS,3PTR - 14:30 |
| | | X MCNAIR,JUMPER - 13:45 | 14:05 - COLLINS,JUMPER | X | |
| 13:30 - CHAMPION,3PTR | X | | | 41-59 18 | 2 GIBSON,JUMPER,- 13:42 |
| 13:27 - WELLS,LAYUP | X | | 13:26 - LEWALLEN,3PTR | X | |
| | | X ANTHONY,LAYUP - 13:18 | | | X GIBSON,3PTR - 13:05 |
| 13:10,- ,CHAMPION,3PTR | 3 10-18 8 | | 12:47,-,COLLINS TURN | TO | |
| | | X ANDELKOVIC,3PTR - 12:50 | | 41-61 20 | 2P GIBSON,LAYUP,-,12:31 |
| | | | 12:06 - SHOEMAKER,3PTR | X | |

12:37 - SHOEMAKER,3PTR X

12:20 - WELLS,LAYUP X

11:53 - COLLINS,JUMPER X

11:12 - FRANKLIN,3PTR X

10:40,-,WELLS TURN TO

10:05 - COLLINS,3PTR X

09:33 - CHAMPION,LAYUP X

08:53 - COLLINS,LAYUP X

08:12 - SHOEMAKER,3PTR X

07:44 - OJO,LAYUP X

07:12 - WELLS,LAYUP X

06:46,-,CHAMPION,3PTR 3

06:19 - OJO,JUMPER X

05:39 - COLLINS,3PTR X

05:02,-,OJO,JUMPER 2

04:30,-,CHAMPION,3PTR 3

04:10,-,COLLINS,FT 1

04:10,-,COLLINS,FT 1

ANDELKOVIC,LAYUP - 12:26 X

ANDELKOVIC,LAYUP - 12:01 X

GIBSON,LAYUP - 11:32 X

ANTHONY,JUMPER - 10:58 X

ANDELKOVIC,3PTR - 10:28 X

HUDSON,3PTR,-,09:58 10-21 1f 3

ANDELKOVIC,3PTR,-,09:24 10-24 14 3

ANDELKOVIC,3PTR,-,08:26 10-27 17 3

WARD,LAYUP,-,08:03 10-29 19 2PF

FRANCIS,3PTR,-,07:31 10-32 22 3

MCNAIR,3PTR - 07:00 X

MCNAIR,JUMPER - 06:32 X

GIBSON,3PTR - 06:01 X

WARD,LAYUP,-,05:19 13-34 21 2P

ANDELKOVIC,3PTR,-,04:44 15-37 22 3

GIBSON,LAYUP - 04:18 X

11:55 - COLLINS,JUMPER X

11:52,-,OJO,JUMPER 2 43-61 18

11:11 - COLLINS,LAYUP X

11:09,-,OJO TURN TO

11:03,-,COLLINS,LAYUP 2PF 45-61 16

10:26 - SHOEMAKER,3PTR X

10:00 - OJO,JUMPER X

09:23 - COLLINS,JUMPER X

08:56 - FRANKLIN,JUMPER X

08:24,-,BATTISTI,LAYUP 2P 47-67 20

07:46,-,JENNINGS TURN TO

07:11,-,WELLS TURN TO

06:51,-,CHAMPION,3PTR 3 50-70 20

06:09,-,CHAMPION TURN TO

05:35 - COLLINS,3PTR X

04:39 - FRANKLIN,3PTR X

04:30 - WILLIS,FT X

MCNAIR TURN -,11:29 TO

ANTHONY TURN -,11:07 TO

ANDELKOVIC,3PTR,-,10:48 45-64 19 3

ANDELKOVIC,3PTR - 10:13 X

ANDELKOVIC,FT,-,09:36 45-65 20 1

ANDELKOVIC,FT - 09:36 X

MCNAIR,FT,-,09:09 45-66 21 1

MCNAIR,FT,-,09:09 45-67 22 1

ANTHONY,LAYUP - 08:34 X

WARD,3PTR - 08:08 X

ANTHONY,LAYUP,-,07:27 47-69 22 2P

WARD,FT - 07:05 X

WARD,FT,-,07:05 47-70 23 1

ANDELKOVIC,FT - 06:28 X

ANDELKOVIC,FT - 06:28 X

ANTHONY,3PTR - 05:52 X

ANDELKOVIC,3PTR,-,05:01 50-73 23 3

| | | | | |
|----------------------------|----------------|-------------|----------------|-----------------------------|
| | | | X | MCNAIR,3PTR - 04:00 |
| 03:42 - SHOEMAKER,3PTR | X | | | |
| 03:36,- ,FRANKLIN,LAYUP | 2 ^P | 22-37 15 | | |
| | | 22-39 17 | 2 | ANTHONY,JUMPER,- ,03:08 |
| 02:48,- ,CHAMPION,3PTR | 3 | 25-39 14 | | |
| | | | X | EGGLESTON,JUMPER - 02:27 |
| 02:13 - JENNINGS,3PTR | X | | | |
| | | | X | FRANCIS,3PTR - 01:58 |
| | | 25-41 16 | 2 ^P | EGGLESTON,LAYUP,- ,01:48 |
| 01:34,- ,COLLINS,LAYUP | 2 ^P | 27-41 14 | | |
| | | | X | ANTHONY,JUMPER - 01:07 |
| 00:53,- ,COLLINS,LAYUP | 2 ^P | 29-41 12 | | |
| | | 29-43 14 | 2 ^P | GIBSON,LAYUP,- ,00:36 |
| 00:17,- ,COLLINS,3PTR | 3 | 32-43 11 | | |
| | | 32-45 13 | 2 ^P | ANTHONY,JUMPER,- ,00:01 |

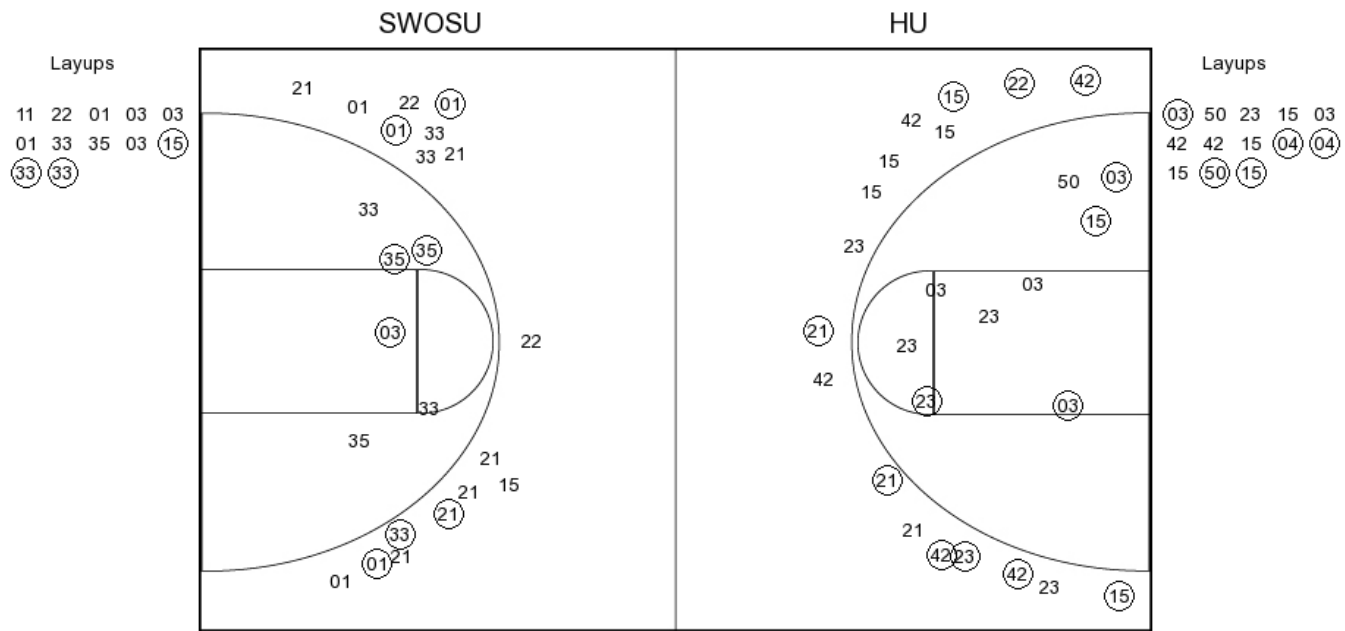
| | | | | |
|----------------------------|----------------|-------------|----------------|------------------------------|
| 04:30,-,WILLIS,FT | 1 | 51-73 22 | | |
| | | | | X |
| | | | | X |
| 03:53 - BATTISTI,LAYUP | X | | | |
| 03:46 - COLLINS,LAYUP | X | | | |
| 03:36 - WELLS,3PTR | X | | | |
| 03:32,-,COLLINS,FT | 1 | 52-73 21 | | |
| 03:32,-,COLLINS,FT | 1 | 53-73 20 | | |
| | | 53-75 22 | 2 ^P | ANTHONY,LAYUP,- ,03:05 |
| 02:46,- ,COLLINS,JUMPER | 2 | 55-75 20 | | |
| | | 55-76 21 | 1 | ANTHONY,FT,-,02:28 |
| | | | X | ANTHONY,FT - 02:28 |
| 02:07 - SHOEMAKER,LAYUP | X | | | |
| | | | | X |
| | | | | ANDELKOVIC,JUMPER - 01:43 |
| | | 55-79 24 | 3 | GIBSON,3PTR,-,01:40 |
| 01:23 - OJO,LAYUP | X | | | |
| 01:18 - HAMMONDS,3PTR | X | | | |
| 01:13,- ,WILLIS,LAYUP | 2 ^P | 57-79 22 | | |
| | | | | X |
| | | | | BAILEY,LAYUP - 01:03 |
| | | 57-82 25 | 3 | ROARK,3PTR,-,00:44 |
| 00:30,- ,LEWALLEN,FT | 1 | 58-82 24 | | |
| 00:30,- ,LEWALLEN,FT | 1 | 59-82 23 | | |
| | | 59-84 25 | 2 ^P | BAILEY,LAYUP,-,00:17 |
| 00:06 - BATTISTI,3PTR | X | | | |

Southwestern Okla. vs Harding

OFFICIAL SHOT CHART

1/30/2016 at Searcy, Ark. (Rhodes-Reaves Field House)

PERIOD 1



SWOSU PERIOD 1

| | |
|----------------|----|
| FG Made | 12 |
| FG Attempted | 36 |
| 3PFG Made | 6 |
| 3PFG Attempted | 18 |

HU PERIOD 1

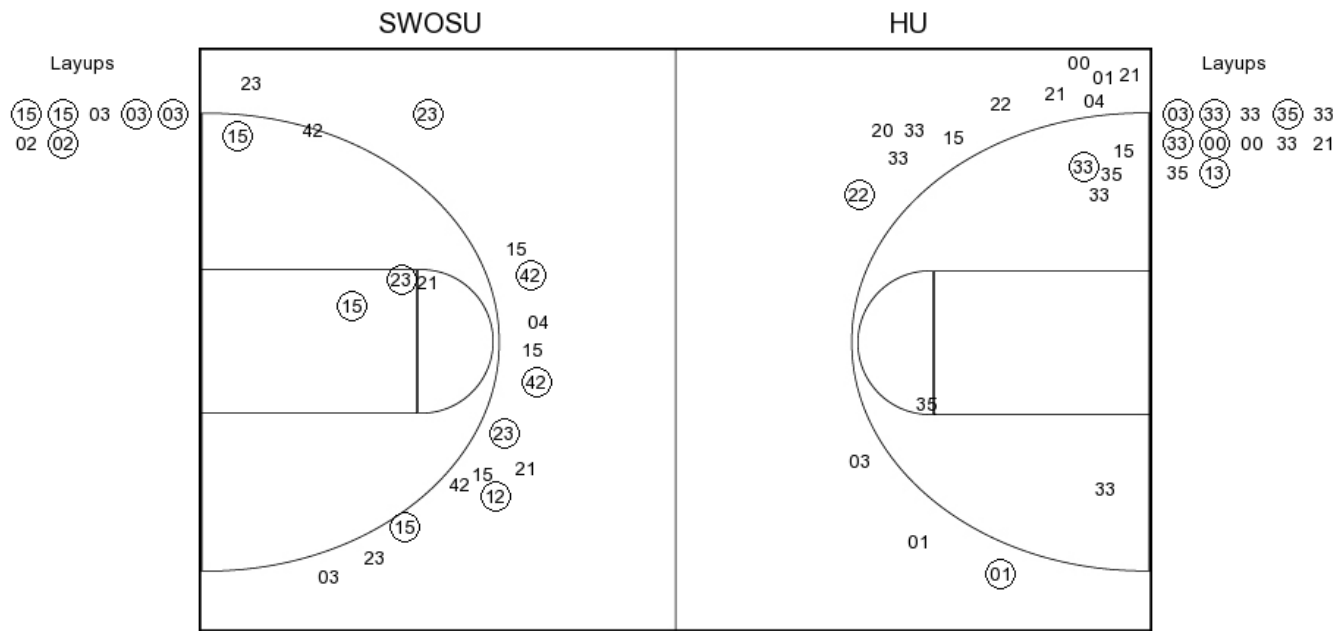
| | |
|----------------|----|
| FG Made | 18 |
| FG Attempted | 39 |
| 3PFG Made | 9 |
| 3PFG Attempted | 17 |

Southwestern Okla. vs Harding

OFFICIAL SHOT CHART

1/30/2016 at Searcy, Ark. (Rhodes-Reaves Field House)

PERIOD 2



SWOSU PERIOD 2

| | |
|----------------|----|
| FG Made | 9 |
| FG Attempted | 33 |
| 3PFG Made | 2 |
| 3PFG Attempted | 14 |

HU PERIOD 2

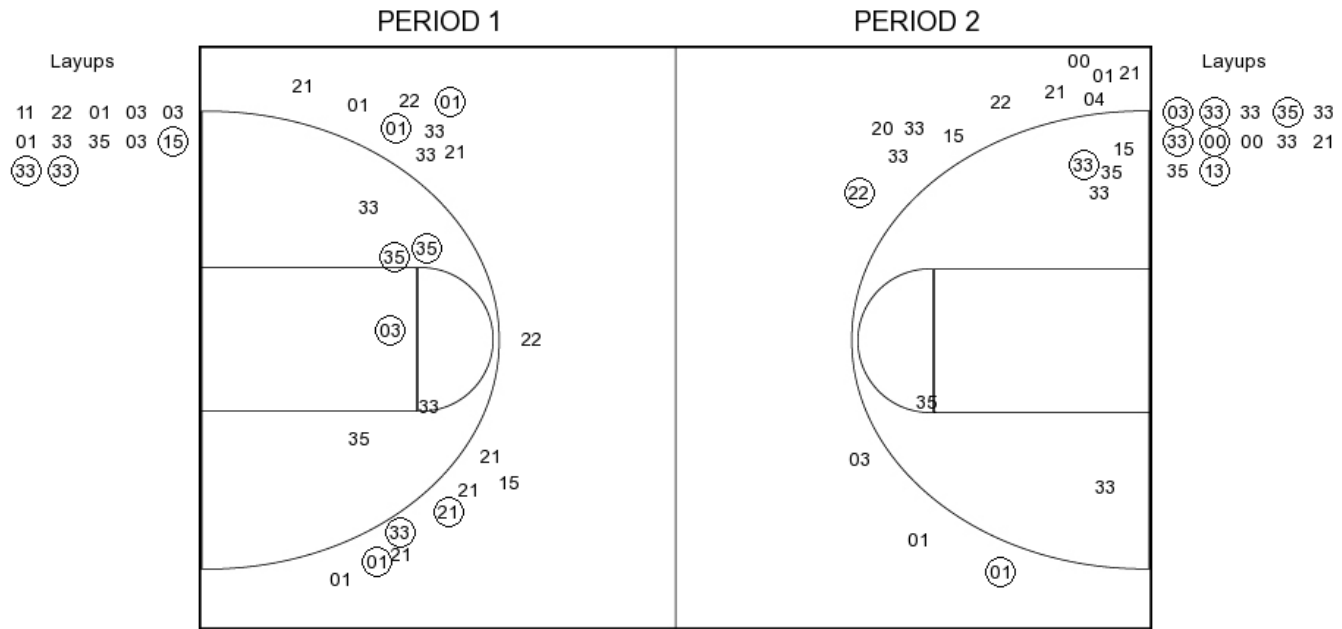
| | |
|----------------|----|
| FG Made | 14 |
| FG Attempted | 27 |
| 3PFG Made | 6 |
| 3PFG Attempted | 15 |

Southwestern Okla. vs Harding

OFFICIAL SHOT CHART

1/30/2016 at Searcy, Ark. (Rhodes-Reaves Field House)

Southwestern Okla.



SWOSU PERIOD 1

| | |
|----------------|----|
| FG Made | 12 |
| FG Attempted | 36 |
| 3PFG Made | 6 |
| 3PFG Attempted | 18 |

SWOSU PERIOD 2

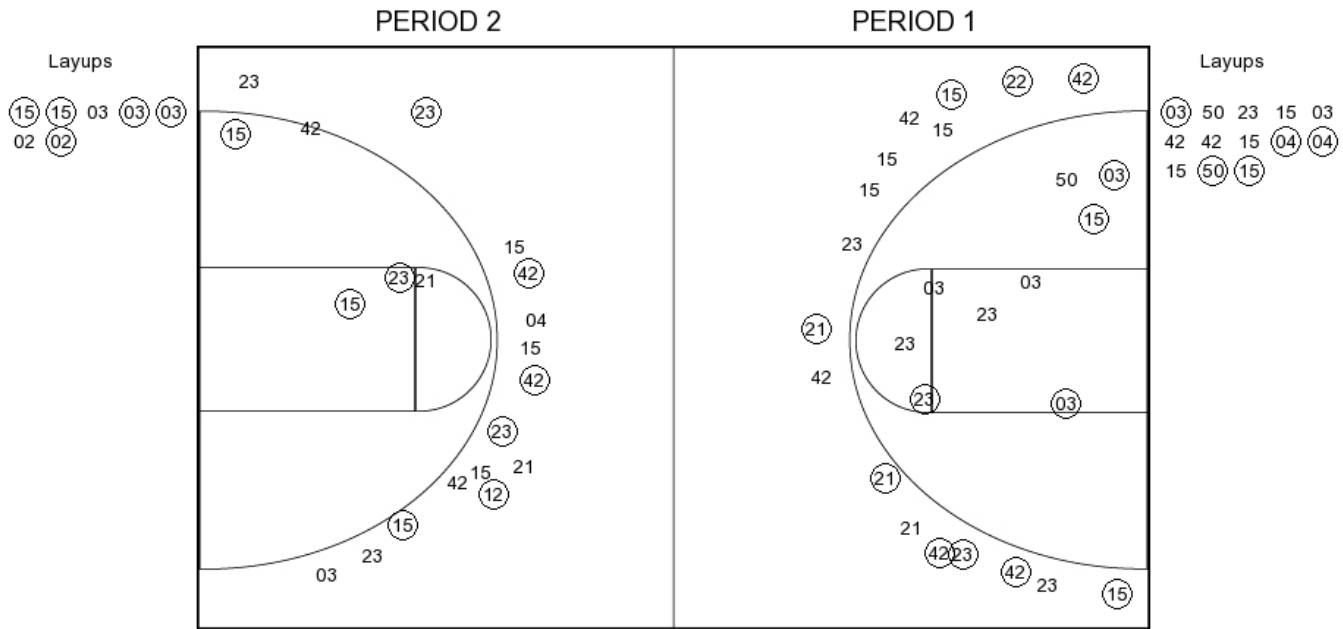
| | |
|----------------|----|
| FG Made | 9 |
| FG Attempted | 33 |
| 3PFG Made | 2 |
| 3PFG Attempted | 14 |

Southwestern Okla. vs Harding

OFFICIAL SHOT CHART

1/30/2016 at Searcy, Ark. (Rhodes-Reaves Field House)

Harding



HU PERIOD 1

| | |
|----------------|----|
| FG Made | 18 |
| FG Attempted | 39 |
| 3PFG Made | 9 |
| 3PFG Attempted | 17 |

HU PERIOD 2

| | |
|----------------|----|
| FG Made | 14 |
| FG Attempted | 27 |
| 3PFG Made | 6 |
| 3PFG Attempted | 15 |