

TEXAS A&M - COMMERCE AT HARDING



12/7/2015

Searcy, Ark. (Rhodes-Reaves Field House)

FINAL STATS

Tex. A&M-Commerce

(4-2)

89

Harding

(4-4)

87

Start Time: 7:30 p.m.

Officials: Brad Gaston, Bryon Jarrett and Nathan Bemis

Attendance: 886

Official Basketball Box Score -- Game Totals -- Final Statistics
Tex. A&M-Commerce vs Harding
12/7/2015 7:30 p.m. at Searcy, Ark. (Rhodes-Reaves Field House)

Tex. A&M-Commerce 89 - 4-2

##	Player	S	Total	3-Ptr		FT-FTA	Rebounds			PF	TP	A	TO	Blk	Stl	Min
			FG-FGA	3PT	FG-FGA		Off Reb	Def Reb	Tot Reb							
01	JONES,JEREMY	g	3-12	1-6	4-4	0	1	1	2	11	9	3	0	1	32	
02	ADAMS,ANTHONY	g	4-11	0-2	6-8	0	9	9	4	14	5	4	0	4	32	
23	OWENS,JR	f	3-10	1-6	0-0	1	3	4	0	7	0	0	0	1	22	
25	WHITE,RONNIE	c	5-8	0-0	0-0	5	5	10	2	10	2	2	1	0	25	
32	CROWDER,BRYANT	f	8-10	0-0	2-5	1	0	1	5	18	0	1	0	1	20	
05	PLEASANT,EVERRETT		2-5	0-0	4-5	1	6	7	0	8	0	1	0	1	20	
10	CARSON,DE'ANDRE		3-8	3-6	0-0	0	0	0	1	9	2	0	1	1	22	
11	ASRAT,ISAAC		2-3	2-3	0-0	0	1	1	0	6	0	0	0	0	12	
12	FOFANG,CRAIG		3-4	0-0	0-0	3	0	3	3	6	1	2	0	0	15	
	TEAM					2	2	4	0			0				
	TOTALS		33-71	7-23	16-22	13	27	40	17	89	19	13	2	9	200	

Deadball Rebounds: 5,0

FG %	1st Half:	17-37	45.9%	2nd Half:	16-34	47.1%	Game:	33-71	46.5%
3FG %	1st Half:	2-9	22.2%	2nd Half:	5-14	35.7%	Game:	7-23	30.4%
FT %	1st Half:	10-12	83.3%	2nd Half:	6-10	60.0%	Game:	16-22	72.7%

Harding 87 - 4-4

##	Player	S	Total	3-Ptr		FT-FTA	Rebounds			PF	TP	A	TO	Blk	Stl	Min
			FG-FGA	3PT	FG-FGA		Off Reb	Def Reb	Tot Reb							
15	GIBSON,JACOB	g	4-13	2-10	5-7	2	2	4	2	15	3	1	1	2	30	
21	FRANCIS,WILL	g	11-17	7-11	6-6	1	2	3	3	35	2	3	1	1	34	
23	MCNAIR,BLAKE	g	3-7	2-5	0-0	1	8	9	0	8	6	3	0	1	30	
42	ANDELKOVIC,STEFAN	f	3-16	2-9	2-2	3	3	6	3	10	0	0	0	1	27	
44	KAVAS,ANDRAZ	f	2-3	1-1	0-0	0	0	0	0	5	1	0	0	0	5	
02	BAILEY,MICAH		0-0	0-0	1-2	1	2	3	2	1	0	3	1	1	12	
03	ANTHONY,REGGIE		1-3	0-0	0-0	0	3	3	2	2	7	1	0	0	23	
04	WARD,ZAC		0-0	0-0	0-0	0	0	0	0	0	0	0	0	0	5	
22	HUDSON,JOHN		1-4	1-4	1-2	0	2	2	3	4	0	1	0	0	21	
24	BURRELL,ANTOINE		3-3	0-0	1-3	2	2	4	3	7	0	1	0	0	13	
TEAM						1	2	3	0		0					
TOTALS			28-66	15-40	16-22	11	26	37	18	87	19	13	3	6	200	

Deadball Rebounds: 6,0

FG %	1st Half:	16-35	45.7%	2nd Half:	12-31	38.7%	Game:	28-66	42.4%
3FG %	1st Half:	10-25	40.0%	2nd Half:	5-15	33.3%	Game:	15-40	37.5%
FT %	1st Half:	3-5	60.0%	2nd Half:	13-17	76.5%	Game:	16-22	72.7%

Officials: Brad Gaston, Bryon Jarrett and Nathan Bemis
 Technical Fouls: Tex. A&M-Commerce- CROWDER,BRYANT; Harding- TEAM;
 Attendance: 886

Score by periods	1st	2nd	Total
Tex. A&M-Commerce	46	43	89
Harding	45	42	87

Points	In Paint	Off Off T/O	2nd 2nd Chance	Fast Fast Break	Bench
TAMUC	44	16	23	3	29
HU	20	23	23	0	14

Last FG - TAMUC 2nd-00:02, HU 2nd-03:49.
 Largest lead - Tex. A&M-Commerce by 11 2nd-16:22; Harding by 10 1st-13:06
 TAMUC led for 12:49. HU led for 24:42. Game was tied for 2:25.

Score tied - 5 times
 Lead changed - 10 times

Official Basketball Box Score -- Game Totals -- First Half Statistics
Tex. A&M-Commerce vs Harding
12/7/2015 7:30 p.m. at Searcy, Ark. (Rhodes-Reaves Field House)

Tex. A&M-Commerce, 46, 4-2

##	Player	S	Total	3-Ptr	FT-FTA	Rebounds			PF	TP	A TO Blk Stl				Min
			FG-FGA	3PT FG-FGA		Off Reb	Def Reb	Tot Reb			A	T	O	Blk	
01	JONES, JEREMY	g	2-5	0-3	4-4	0	1	1	0	8	4	2	0	0	15
02	ADAMS, ANTHONY	g	2-6	0-1	2-4	0	6	6	1	6	2	1	0	2	14
23	OWENS, JR	f	1-4	0-1	0-0	0	0	0	0	2	0	0	0	0	10
25	WHITE, RONNIE	c	2-3	0-0	0-0	2	3	5	0	4	1	0	0	0	9
32	CROWDER, BRYANT	f	6-8	0-0	1-1	1	0	1	2	13	0	1	0	0	11
05	PLEASANT, EVERRETT		1-4	0-0	3-3	1	5	6	0	5	0	0	0	1	10
10	CARSON, DE'ANDRE		0-3	0-1	0-0	0	0	0	0	0	2	0	0	0	12
11	ASRAT, ISAAC		2-3	2-3	0-0	0	1	1	0	6	0	0	0	0	8
12	FOFANG, CRAIG		1-1	0-0	0-0	2	0	2	1	2	0	1	0	0	11
	TEAM					1	0	1	0			0			
Totals			17-37	2-9	10-12	7	16	23	4	46	9	5	0	3	100

FG % Half: 17-37 45.9%
 3FG % Half: 2-9 22.2%
 FT % Half: 10-12 83.3%

Harding, 45, 4-4

##	Player	S	Total	3-Ptr		Rebounds			PF	TP	A TO Blk Stl				Min					
			FG-FGA	3PT	FG-FGA	FT-FTA	Off Reb	Def Reb			Tot Reb	A	T	O		Blk	Stl			
15	GIBSON,JACOB	g	1-7		1-6		2-2		1	2	3	1	5	3	0	0	1		15	
21	FRANCIS,WILL	g	7-9		6-8		0-0		0	0	0	1	20	2	0	1	1		17	
23	MCNAIR,BLAKE	g	1-4		0-2		0-0		1	5	6	0	2	4	1	0	0		13	
42	ANDELKOVIC,STEFAN	f	3-8		2-7		0-0		0	1	1	1	8	0	0	0	1		15	
44	KAVAS,ANDRAZ	f	2-3		1-1		0-0		0	0	0	0	5	1	0	0	0		5	
02	BAILEY,MICAH		0-0		0-0		1-2		1	2	3	2	1	0	3	1	1		10	
03	ANTHONY,REGGIE		1-2		0-0		0-0		0	2	2	1	2	3	0	0	0		11	
04	WARD,ZAC		0-0		0-0		0-0		0	0	0	0	0	0	0	0	0		2	
22	HUDSON,JOHN		0-1		0-1		0-0		0	0	0	2	0	0	0	0	0		7	
24	BURRELL,ANTOINE		1-1		0-0		0-1		0	1	1	2	2	0	0	0	0		5	
TEAM									0	0	0	0		0						
Totals				16-35		10-25		3-5		3	13	16	10	45	13	4	2	4		100

FG % Half: 16-35 45.7%
 3FG % Half: 10-25 40.0%
 FT % Half: 3-5 60.0%

Officials: Brad Gaston, Bryon Jarrett and Nathan Bemis
 Technical Fouls: Tex. A&M-Commerce- None. Harding- TEAM;

Score by periods	1st	2nd	Total
Tex. A&M-Commerce	46	43	89
Harding	45	42	87

Points	In Paint	Off T/O	2nd 2nd Chance	Fast Fast Break	Bench
TAMUC	24	4	12	0	13
HU	6	11	0	0	5

Last FG - TAMUC 1st-00:52, HU 1st-00:34.
 TAMUC led for 2:56. HU led for 16:50. Game was tied for 0:14.

Score tied - 0 times
 Lead changed - 2 times

Tex. A&M-Commerce vs Harding
12/7/2015; 7:30 p.m. at Searcy, Ark. (Rhodes-Reaves Field House)
Period 1 Play-By-Play

VISITORS: Tex. A&M-Commerce	Time	Score	Margin	HOME: Harding
GOOD! JUMPER by OWENS,JR	19:46	0-2	V 2	
ASSIST by JONES,JEREMY	19:46			
	19:23	3-2	H 1	GOOD! 3PTR by FRANCIS,WILL
	19:23			ASSIST by MCNAIR,BLAKE
MISSED LAYUP by ADAMS,ANTHONY	19:05			
	19:05			REBOUND (DEF) by ANDELKOVIC,STEFAN
	18:53			MISSED 3PTR by GIBSON,JACOB
REBOUND (DEF) by ADAMS,ANTHONY	18:53			
TURNOVER by ADAMS,ANTHONY	18:46			
FOUL by CROWDER,BRYANT	18:31			
	18:25	6-2	H 4	GOOD! 3PTR by ANDELKOVIC,STEFAN
	18:25			ASSIST by KAVAS,ANDRAZ
	18:04			FOUL by GIBSON,JACOB
MISSED LAYUP by WHITE,RONNIE	18:01			
	18:01			BLOCK by FRANCIS,WILL
	17:59			REBOUND (DEF) by MCNAIR,BLAKE
	17:55			TURNOVER by MCNAIR,BLAKE
STEAL by ADAMS,ANTHONY	17:52			
TURNOVER by JONES,JEREMY	17:51			
	17:51			STEAL by FRANCIS,WILL
	17:39	9-2	H 7	GOOD! 3PTR by FRANCIS,WILL
	17:39			ASSIST by MCNAIR,BLAKE
MISSED LAYUP by OWENS,JR	17:22			
REBOUND (OFF) by CROWDER,BRYANT	17:22			
GOOD! LAYUP by CROWDER,BRYANT [PNT]	17:18	9-4	H 5	
	17:04	11-4	H 7	GOOD! JUMPER by KAVAS,ANDRAZ
	17:04			ASSIST by MCNAIR,BLAKE
GOOD! LAYUP by JONES,JEREMY [PNT]	16:47	11-6	H 5	
	16:25	14-6	H 8	GOOD! 3PTR by FRANCIS,WILL
	16:25			ASSIST by MCNAIR,BLAKE
GOOD! LAYUP by WHITE,RONNIE [PNT]	16:08	14-8	H 6	
ASSIST by JONES,JEREMY	16:08			
	15:51			TIMEOUT MEDIA
SUB IN: CARSON,DE'ANDRE	15:51			
SUB IN: FOFANG,CRAIG	15:51			
SUB OUT: JONES,JEREMY	15:51			
SUB OUT: WHITE,RONNIE	15:51			
	15:37	17-8	H 9	GOOD! 3PTR by KAVAS,ANDRAZ
	15:37			ASSIST by FRANCIS,WILL
GOOD! LAYUP by ADAMS,ANTHONY [PNT]	15:21	17-10	H 7	
	15:02			MISSED LAYUP by KAVAS,ANDRAZ
REBOUND (DEF) by ADAMS,ANTHONY	15:02			
SUB IN: ASRAT,ISAAC	15:00			
SUB OUT: OWENS,JR	15:00			
	15:00			SUB IN: BAILEY,MICAH
	15:00			SUB OUT: KAVAS,ANDRAZ
MISSED LAYUP by CROWDER,BRYANT	14:48			
	14:48			REBOUND (DEF) by GIBSON,JACOB
	14:33			MISSED 3PTR by ANDELKOVIC,STEFAN
REBOUND (DEF) by ASRAT,ISAAC	14:33			
GOOD! JUMPER by ADAMS,ANTHONY	14:26	17-12	H 5	
ASSIST by CARSON,DE'ANDRE	14:26			
	14:07			MISSED 3PTR by GIBSON,JACOB

VISITORS: Tex. A&M-Commerce	Time	Score	Margin	HOME: Harding
REBOUND (DEF) by ADAMS,ANTHONY	14:07			
MISSED JUMPER by ADAMS,ANTHONY	13:58			
REBOUND (OFF) by FOFANG,CRAIG	13:58			
TURNOVER by FOFANG,CRAIG	13:53			
	13:53			STEAL by GIBSON,JACOB
	13:36	20-12	H 8	GOOD! 3PTR by ANDELKOVIC,STEFAN
	13:36			ASSIST by GIBSON,JACOB
TURNOVER by CROWDER,BRYANT	13:12			
	13:11			STEAL by ANDELKOVIC,STEFAN
FOUL by FOFANG,CRAIG	13:06			
	13:06	21-12	H 9	GOOD! FT by GIBSON,JACOB
	13:06	22-12	H 10	GOOD! FT by GIBSON,JACOB
SUB IN: JONES,JEREMY	13:06			
SUB IN: PLEASANT,EVERRETT	13:06			
SUB OUT: ADAMS,ANTHONY	13:06			
SUB OUT: CROWDER,BRYANT	13:06			
	13:06			SUB IN: ANTHONY,REGGIE
	13:06			SUB IN: HUDSON,JOHN
	13:06			SUB OUT: GIBSON,JACOB
	13:06			SUB OUT: FRANCIS,WILL
MISSED 3PTR by JONES,JEREMY	12:41			
	12:41			REBOUND (DEF) by MCNAIR,BLAKE
	12:32			MISSED 3PTR by MCNAIR,BLAKE
REBOUND (DEF) by PLEASANT,EVERRETT	12:32			
MISSED 3PTR by ASRAT,ISAAC	12:29			
	12:29			REBOUND (DEF) by MCNAIR,BLAKE
MISSED 3PTR by JONES,JEREMY	12:16			
	12:16			REBOUND (DEF) by MCNAIR,BLAKE
	12:04			MISSED 3PTR by MCNAIR,BLAKE
	12:04			REBOUND (OFF) by BAILEY,MICAH
	11:50			MISSED 3PTR by ANDELKOVIC,STEFAN
REBOUND (DEF) by PLEASANT,EVERRETT	11:50			
MISSED 3PTR by JONES,JEREMY	11:38			
REBOUND (OFF) by PLEASANT,EVERRETT	11:38			
GOOD! JUMPER by PLEASANT,EVERRETT	11:20	22-14	H 8	
	11:20			FOUL by BAILEY,MICAH
GOOD! FT by PLEASANT,EVERRETT	11:20	22-15	H 7	
	11:20			SUB IN: BURRELL,ANTOINE
	11:20			SUB OUT: ANDELKOVIC,STEFAN
	11:06			TURNOVER by BAILEY,MICAH
STEAL by PLEASANT,EVERRETT	11:04			
MISSED 3PTR by CARSON,DE'ANDRE	11:01			
REBOUND (OFF) by WHITE,RONNIE	11:01			
GOOD! LAYUP by WHITE,RONNIE [PNT]	10:58	22-17	H 5	
	10:40			MISSED JUMPER by ANTHONY,REGGIE
	10:40			REBOUND (OFF) by MCNAIR,BLAKE
	10:26			MISSED 3PTR by HUDSON,JOHN
REBOUND (DEF) by WHITE,RONNIE	10:26			
	10:18			FOUL by BURRELL,ANTOINE
GOOD! FT by JONES,JEREMY	10:18	22-18	H 4	
GOOD! FT by JONES,JEREMY	10:18	22-19	H 3	
SUB IN: OWENS,JR	10:18			
SUB IN: WHITE,RONNIE	10:18			
SUB OUT: FOFANG,CRAIG	10:18			
SUB OUT: ASRAT,ISAAC	10:18			
	10:18			SUB IN: GIBSON,JACOB
	10:18			SUB IN: FRANCIS,WILL
	10:18			SUB OUT: MCNAIR,BLAKE

VISITORS: Tex. A&M-Commerce	Time	Score	Margin	HOME: Harding
	10:18			SUB OUT: BAILEY,MICAH
	10:00			MISSED 3PTR by FRANCIS,WILL
REBOUND (DEF) by WHITE,RONNIE	10:00			
MISSED JUMPER by OWENS,JR	09:50			
	09:50			REBOUND (DEF) by BURRELL,ANTOINE
	09:34	24-19	H 5	GOOD! JUMPER by ANTHONY,REGGIE
	09:14			FOUL by BURRELL,ANTOINE
SUB IN: ADAMS,ANTHONY	09:14			
SUB IN: CROWDER,BRYANT	09:14			
SUB OUT: CARSON,DE'ANDRE	09:14			
SUB OUT: PLEASANT,EVERRETT	09:14			
GOOD! LAYUP by CROWDER,BRYANT [PNT]	09:04	24-21	H 3	
ASSIST by WHITE,RONNIE	09:04			
	08:51	26-21	H 5	GOOD! LAYUP by FRANCIS,WILL [PNT]
	08:44			FOUL by HUDSON,JOHN
GOOD! FT by ADAMS,ANTHONY	08:44	26-22	H 4	
GOOD! FT by ADAMS,ANTHONY	08:44	26-23	H 3	
	08:39	28-23	H 5	GOOD! LAYUP by BURRELL,ANTOINE [PNT]
	08:39			ASSIST by GIBSON,JACOB
FOUL by ADAMS,ANTHONY	08:32			
	08:32			MISSED FT by BURRELL,ANTOINE
	08:32			REBOUND (OFF) by GIBSON,JACOB
	08:30			MISSED LAYUP by GIBSON,JACOB
REBOUND (DEF) by ADAMS,ANTHONY	08:30			
GOOD! DUNK by CROWDER,BRYANT [PNT]	08:12	28-25	H 3	
ASSIST by JONES,JEREMY	08:12			
	07:59			MISSED 3PTR by GIBSON,JACOB
REBOUND (DEF) by WHITE,RONNIE	07:59			
GOOD! LAYUP by CROWDER,BRYANT [PNT]	07:43	28-27	H 1	
ASSIST by JONES,JEREMY	07:43			
	07:41			TIMEOUT 30SEC
	07:41			TIMEOUT MEDIA
	07:41			SUB IN: ANDELKOVIC,STEFAN
	07:41			SUB OUT: BURRELL,ANTOINE
	07:30	31-27	H 4	GOOD! 3PTR by FRANCIS,WILL
	07:30			ASSIST by ANTHONY,REGGIE
GOOD! LAYUP by CROWDER,BRYANT [PNT]	07:20	31-29	H 2	
ASSIST by ADAMS,ANTHONY	07:20			
	07:05	34-29	H 5	GOOD! 3PTR by FRANCIS,WILL
	07:05			ASSIST by GIBSON,JACOB
MISSED JUMPER by CROWDER,BRYANT	06:43			
	06:43			REBOUND (DEF) by GIBSON,JACOB
	06:34	37-29	H 8	GOOD! 3PTR by FRANCIS,WILL
	06:34			ASSIST by ANTHONY,REGGIE
MISSED JUMPER by ADAMS,ANTHONY	06:15			
	06:15			REBOUND (DEF) by ANTHONY,REGGIE
	06:07			MISSED 3PTR by FRANCIS,WILL
REBOUND (DEF) by ADAMS,ANTHONY	06:07			
MISSED 3PTR by OWENS,JR	05:57			
REBOUND (OFF) by WHITE,RONNIE	05:57			
GOOD! LAYUP by CROWDER,BRYANT [PNT]	05:48	37-31	H 6	
	05:48			FOUL by HUDSON,JOHN
	05:48			FOUL (TECH) by TEAM
MISSED FT by ADAMS,ANTHONY	05:48			
REBOUND (DEADB) by TEAM	05:48			
MISSED FT by ADAMS,ANTHONY	05:48			
REBOUND (DEADB) by TEAM	05:48			
GOOD! FT by CROWDER,BRYANT	05:48	37-32	H 5	

VISITORS: Tex. A&M-Commerce	Time	Score	Margin	HOME: Harding
SUB IN: PLEASANT,EVERRETT	05:48			
SUB IN: CARSON,DE'ANDRE	05:48			
SUB OUT: OWENS,JR	05:48			
SUB OUT: WHITE,RONNIE	05:48			
	05:48			SUB IN: BAILEY,MICAH
	05:48			SUB OUT: HUDSON,JOHN
	05:36	39-32	H 7	GOOD! LAYUP by ANDELKOVIC,STEFAN [PNT]
	05:36			ASSIST by ANTHONY,REGGIE
GOOD! LAYUP by JONES,JEREMY [PNT]	05:20	39-34	H 5	
FOUL by CROWDER,BRYANT	05:06			
	05:06			MISSED FT by BAILEY,MICAH
	05:06			REBOUND (DEADB) by TEAM
	05:06	40-34	H 6	GOOD! FT by BAILEY,MICAH
SUB IN: FOFANG,CRAIG	05:06			
SUB OUT: CROWDER,BRYANT	05:06			
MISSED LAYUP by CARSON,DE'ANDRE	04:53			
	04:53			REBOUND (DEF) by BAILEY,MICAH
	04:41			MISSED 3PTR by ANDELKOVIC,STEFAN
REBOUND (DEF) by ADAMS,ANTHONY	04:41			
MISSED LAYUP by PLEASANT,EVERRETT	04:26			
	04:26			REBOUND (DEF) by BAILEY,MICAH
	04:17			MISSED 3PTR by GIBSON,JACOB
REBOUND (DEF) by PLEASANT,EVERRETT	04:17			
MISSED LAYUP by PLEASANT,EVERRETT	03:57			
REBOUND (OFF) by FOFANG,CRAIG	03:57			
GOOD! LAYUP by FOFANG,CRAIG [PNT]	03:55	40-36	H 4	
	03:33			TURNOVER by BAILEY,MICAH
STEAL by ADAMS,ANTHONY	03:32			
	03:25			FOUL by FRANCIS,WILL
GOOD! FT by JONES,JEREMY	03:25	40-37	H 3	
GOOD! FT by JONES,JEREMY	03:25	40-38	H 2	
SUB IN: ASRAT,ISAAC	03:25			
SUB OUT: ADAMS,ANTHONY	03:25			
	03:25			SUB IN: MCNAIR,BLAKE
	03:25			SUB IN: WARD,ZAC
	03:25			SUB OUT: ANTHONY,REGGIE
	03:25			SUB OUT: GIBSON,JACOB
	03:11			TURNOVER by BAILEY,MICAH
TURNOVER by JONES,JEREMY	02:57			
	02:56			STEAL by BAILEY,MICAH
	02:49			MISSED 3PTR by ANDELKOVIC,STEFAN
REBOUND (DEF) by JONES,JEREMY	02:49			
GOOD! 3PTR by ASRAT,ISAAC	02:33	40-41	V 1	
ASSIST by CARSON,DE'ANDRE	02:33			
	02:16			MISSED JUMPER by MCNAIR,BLAKE
REBOUND (DEF) by PLEASANT,EVERRETT	02:16			
MISSED LAYUP by PLEASANT,EVERRETT	01:58			
	01:58			BLOCK by BAILEY,MICAH
REBOUND (OFF) by TEAM	01:58			
TIMEOUT 30SEC	01:58			
MISSED LAYUP by CARSON,DE'ANDRE	01:51			
	01:51			REBOUND (DEF) by MCNAIR,BLAKE
	01:32			MISSED 3PTR by ANDELKOVIC,STEFAN
REBOUND (DEF) by PLEASANT,EVERRETT	01:32			
	01:19			FOUL by BAILEY,MICAH
GOOD! FT by PLEASANT,EVERRETT	01:19	40-42	V 2	
GOOD! FT by PLEASANT,EVERRETT	01:19	40-43	V 3	
SUB IN: ADAMS,ANTHONY	01:19			

VISITORS: Tex. A&M-Commerce	Time	Score	Margin	HOME: Harding
SUB OUT: JONES,JEREMY	01:19			
	01:19			SUB IN: ANTHONY,REGGIE
	01:19			SUB IN: GIBSON,JACOB
	01:19			SUB IN: BURRELL,ANTOINE
	01:19			SUB OUT: BAILEY,MICAH
	01:19			SUB OUT: ANDELKOVIC,STEFAN
	01:19			SUB OUT: WARD,ZAC
	01:01	42-43	V 1	GOOD! JUMPER by MCNAIR,BLAKE
GOOD! 3PTR by ASRAT,ISAAC	00:52	42-46	V 4	
ASSIST by ADAMS,ANTHONY	00:52			
	00:34	45-46	V 1	GOOD! 3PTR by GIBSON,JACOB
	00:34			ASSIST by FRANCIS,WILL
MISSED 3PTR by ADAMS,ANTHONY	00:07			
	00:07			REBOUND (DEF) by ANTHONY,REGGIE
	00:00			MISSED 3PTR by GIBSON,JACOB
	00:00			REBOUND (DEADB) by TEAM
	00:00			FOUL by ANDELKOVIC,STEFAN
	00:00			FOUL by ANTHONY,REGGIE

Tex. A&M-Commerce 46, Harding 45

Period 1-only	In Paint	Off T/O	2nd Chance	Fast Break	Bench	****	
TAMUC	24	4	12	0	13		Score tied - 0 times
HU	6	11	0	0	5		Lead changed - 2 times

Official Basketball Box Score -- Game Totals -- Second Half Statistics

Tex. A&M-Commerce vs Harding

12/7/2015 7:30 p.m. at Searcy, Ark. (Rhodes-Reaves Field House)

Tex. A&M-Commerce, 43, 4-2

##	Player	S	Total	3-Ptr		Rebounds			PF	TP	A TO Blk Stl				Min
			FG-FGA	3PT FG-FGA	FT-FTA	Off Reb	Def Reb	Tot Reb			A	T	O	Blk	
01	JONES, JEREMY	g	1-7	1-3	0-0	0	0	0	2	3	5	1	0	1	17
02	ADAMS, ANTHONY	g	2-5	0-1	4-4	0	3	3	3	8	3	3	0	2	18
23	OWENS, JR	f	2-6	1-5	0-0	1	3	4	0	5	0	0	0	1	12
25	WHITE, RONNIE	c	3-5	0-0	0-0	3	2	5	2	6	1	2	1	0	16
32	CROWDER, BRYANT	f	2-2	0-0	1-4	0	0	0	3	5	0	0	0	1	9
05	PLEASANT, EVERRETT		1-1	0-0	1-2	0	1	1	0	3	0	1	0	0	10
10	CARSON, DE'ANDRE		3-5	3-5	0-0	0	0	0	1	9	0	0	1	1	10
11	ASRAT, ISAAC		0-0	0-0	0-0	0	0	0	0	0	0	0	0	0	4
12	FOFANG, CRAIG		2-3	0-0	0-0	1	0	1	2	4	1	1	0	0	4
	TEAM					1	2	3	0			0			
Totals			16-34	5-14	6-10	6	11	17	13	43	10	8	2	6	100

FG % Half: 16-34 47.1%
 3FG % Half: 5-14 22.2%
 FT % Half: 6-10 60.0%

Harding, 42, 4-4

##	Player	S	Total	3-Ptr	FT-FTA	Rebounds			PF	TP	A TO Blk Stl				Min	
			FG-FGA	3PT FG-FGA		Off Reb	Def Reb	Tot Reb			A	T	O	Blk		Stl
15	GIBSON,JACOB	g	3-6	1-4	3-5	1	0	1	1	10	0	1	1	1	15	
21	FRANCIS,WILL	g	4-8	1-3	6-6	1	2	3	2	15	0	3	0	0	17	
23	MCNAIR,BLAKE	g	2-3	2-3	0-0	0	3	3	0	6	2	2	0	1	17	
42	ANDELKOVIC,STEFAN	f	0-8	0-2	2-2	3	2	5	2	2	0	0	0	0	12	
44	KAVAS,ANDRAZ	f	0-0	0-0	0-0	0	0	0	0	0	0	0	0	0	0	
02	BAILEY,MICAH		0-0	0-0	0-0	0	0	0	0	0	0	0	0	0	2	
03	ANTHONY,REGGIE		0-1	0-0	0-0	0	1	1	1	0	4	1	0	0	12	
04	WARD,ZAC		0-0	0-0	0-0	0	0	0	0	0	0	0	0	0	3	
22	HUDSON,JOHN		1-3	1-3	1-2	0	2	2	1	4	0	1	0	0	14	
24	BURRELL,ANTOINE		2-2	0-0	1-2	2	1	3	1	5	0	1	0	0	8	
TEAM						1	2	3	0		0					
Totals				12-31	5-15	13-17	8	13	21	8	42	6	9	1	2	100

FG % Half: 12-31 38.7%
 3FG % Half: 5-15 40.0%
 FT % Half: 13-17 76.5%

Officials: Brad Gaston, Bryon Jarrett and Nathan Bemis

Technical Fouls: , Tex. A&M-Commerce- CROWDER, BRYANT; , Harding- None.

Score by periods	1st	2nd	Total
Tex. A&M-Commerce	46	43	89
Harding	45	42	87

Points	In		2nd		Fast	
	Paint	Off T/O	2nd Chance	Fast Break	Bench	
TAMUC	20	12	11	3	16	
HU	14	12	11	0	9	

Last FG - TAMUC 2nd-00:02, HU 2nd-03:49.

TAMUC led for 9:53. HU led for 7:52. Game was tied for 2:11.

Score tied - 5 times
 Lead changed - 8 times

Tex. A&M-Commerce vs Harding
12/7/2015; 7:30 p.m. at Searcy, Ark. (Rhodes-Reaves Field House)
Period 2 Play-By-Play

VISITORS: Tex. A&M-Commerce	Time	Score	Margin	HOME: Harding
	20:00			SUB IN: BAILEY,MICAH
	20:00			SUB OUT: KAVAS,ANDRAZ
	19:41			MISSED 3PTR by FRANCIS,WILL
REBOUND (DEF) by TEAM	19:41			
GOOD! LAYUP by WHITE,RONNIE [PNT]	19:15	45-48	V 3	
ASSIST by JONES,JEREMY	19:15			
	18:55			MISSED 3PTR by GIBSON,JACOB
REBOUND (DEF) by OWENS,JR	18:55			
MISSED 3PTR by OWENS,JR	18:38			
REBOUND (OFF) by OWENS,JR	18:38			
GOOD! JUMPER by OWENS,JR [PNT]	18:34	45-50	V 5	
	18:04			MISSED LAYUP by ANDELKOVIC,STEFAN
REBOUND (DEF) by OWENS,JR	18:04			
MISSED 3PTR by ADAMS,ANTHONY	17:54			
REBOUND (OFF) by WHITE,RONNIE	17:54			
GOOD! LAYUP by CROWDER,BRYANT [PNT]	17:41	45-52	V 7	
ASSIST by WHITE,RONNIE	17:41			
	17:34			TIMEOUT 30SEC
	17:34			SUB IN: HUDSON,JOHN
	17:34			SUB OUT: BAILEY,MICAH
	17:19			TURNOVER by GIBSON,JACOB
STEAL by OWENS,JR	17:18			
GOOD! JUMPER by CROWDER,BRYANT [PNT]	17:10	45-54	V 9	
ASSIST by JONES,JEREMY	17:10			
	16:55			MISSED 3PTR by ANDELKOVIC,STEFAN
	16:55			REBOUND (DEADB) by TEAM
FOUL by CROWDER,BRYANT	16:53			
	16:53			SUB IN: ANTHONY,REGGIE
	16:53			SUB OUT: GIBSON,JACOB
	16:47			MISSED LAYUP by ANDELKOVIC,STEFAN
REBOUND (DEF) by OWENS,JR	16:47			
	16:39			FOUL by HUDSON,JOHN
	16:39			SUB IN: BURRELL,ANTOINE
	16:39			SUB OUT: ANDELKOVIC,STEFAN
GOOD! LAYUP by ADAMS,ANTHONY [PNT]	16:22	45-56	V 11	
	16:09			MISSED JUMPER by FRANCIS,WILL
	16:09			REBOUND (OFF) by BURRELL,ANTOINE
	16:02	48-56	V 8	GOOD! 3PTR by MCNAIR,BLAKE
	16:02			ASSIST by ANTHONY,REGGIE
MISSED 3PTR by OWENS,JR	15:31			
	15:31			REBOUND (DEF) by TEAM
SUB IN: CARSON,DE'ANDRE	15:27			
SUB IN: PLEASANT,EVERRETT	15:27			
SUB OUT: OWENS,JR	15:27			
SUB OUT: CROWDER,BRYANT	15:27			
	15:14	51-56	V 5	GOOD! 3PTR by HUDSON,JOHN
	15:14			ASSIST by ANTHONY,REGGIE
TURNOVER by ADAMS,ANTHONY	14:58			
	14:49	53-56	V 3	GOOD! LAYUP by FRANCIS,WILL [PNT]
MISSED LAYUP by WHITE,RONNIE	14:30			
	14:30			REBOUND (DEF) by HUDSON,JOHN
FOUL by CARSON,DE'ANDRE	14:22			
SUB IN: FOFANG,CRAIG	14:22			

VISITORS: Tex. A&M-Commerce	Time	Score	Margin	HOME: Harding
SUB IN: ASRAT,ISAAC	14:22			
SUB OUT: ADAMS,ANTHONY	14:22			
SUB OUT: WHITE,RONNIE	14:22			
	14:15			TURNOVER by BURRELL,ANTOINE
MISSED 3PTR by CARSON,DE'ANDRE	14:02			
	14:02			REBOUND (DEF) by BURRELL,ANTOINE
	13:45	55-56	V 1	GOOD! LAYUP by BURRELL,ANTOINE [PNT]
	13:45			ASSIST by MCNAIR,BLAKE
FOUL by FOFANG,CRAIG	13:40			
TURNOVER by FOFANG,CRAIG	13:40			
	13:33	58-56	H 2	GOOD! 3PTR by MCNAIR,BLAKE
	13:33			ASSIST by ANTHONY,REGGIE
GOOD! LAYUP by FOFANG,CRAIG [PNT]	13:18	58-58	T	
ASSIST by JONES,JEREMY	13:18			
	12:53			MISSED 3PTR by HUDSON,JOHN
REBOUND (DEF) by TEAM	12:53			
SUB IN: ADAMS,ANTHONY	12:51			
SUB OUT: JONES,JEREMY	12:51			
MISSED LAYUP by FOFANG,CRAIG	12:34			
	12:34			REBOUND (DEF) by MCNAIR,BLAKE
	12:25			TURNOVER by MCNAIR,BLAKE
STEAL by ADAMS,ANTHONY	12:24			
	12:19			FOUL by FRANCIS,WILL
GOOD! FT by ADAMS,ANTHONY	12:19	58-59	V 1	
GOOD! FT by ADAMS,ANTHONY	12:19	58-60	V 2	
	12:19			SUB IN: WARD,ZAC
	12:19			SUB IN: GIBSON,JACOB
	12:19			SUB OUT: FRANCIS,WILL
	12:19			SUB OUT: MCNAIR,BLAKE
GOOD! 3PTR by CARSON,DE'ANDRE	12:15	58-63	V 5	
ASSIST by FOFANG,CRAIG	12:15			
FOUL by FOFANG,CRAIG	11:59			
	11:59			MISSED FT by BURRELL,ANTOINE
	11:59			REBOUND (DEADB) by TEAM
	11:59	59-63	V 4	GOOD! FT by BURRELL,ANTOINE
GOOD! LAYUP by PLEASANT,EVERRETT [PNT]	11:45	59-65	V 6	
ASSIST by ADAMS,ANTHONY	11:45			
	11:23	62-65	V 3	GOOD! 3PTR by GIBSON,JACOB
	11:23			ASSIST by ANTHONY,REGGIE
MISSED LAYUP by ADAMS,ANTHONY	11:05			
REBOUND (OFF) by FOFANG,CRAIG	11:05			
GOOD! LAYUP by FOFANG,CRAIG [PNT]	11:03	62-67	V 5	
	10:49			MISSED 3PTR by GIBSON,JACOB
	10:49			REBOUND (OFF) by BURRELL,ANTOINE
	10:46	64-67	V 3	GOOD! LAYUP by BURRELL,ANTOINE [PNT]
TURNOVER by ADAMS,ANTHONY	10:32			
	10:32			TIMEOUT MEDIA
SUB IN: WHITE,RONNIE	10:32			
SUB IN: JONES,JEREMY	10:32			
SUB IN: CROWDER,BRYANT	10:32			
SUB IN: OWENS,JR	10:32			
SUB OUT: FOFANG,CRAIG	10:32			
SUB OUT: ASRAT,ISAAC	10:32			
SUB OUT: CARSON,DE'ANDRE	10:32			
SUB OUT: PLEASANT,EVERRETT	10:32			
FOUL by JONES,JEREMY	10:19			
FOUL by JONES,JEREMY	10:08			
FOUL by CROWDER,BRYANT	10:08			

VISITORS: Tex. A&M-Commerce	Time	Score	Margin	HOME: Harding
FOUL (TECH) by CROWDER,BRYANT	10:08			
	10:08	65-67	V 2	GOOD! FT by GIBSON,JACOB
	10:08			MISSED FT by GIBSON,JACOB
	10:08			REBOUND (DEADB) by TEAM
	10:08			MISSED FT by GIBSON,JACOB
	10:08			REBOUND (DEADB) by TEAM
	10:08	66-67	V 1	GOOD! FT by GIBSON,JACOB
	10:08	67-67	T	GOOD! FT by GIBSON,JACOB
SUB IN: PLEASANT,EVERRETT	10:08			
SUB OUT: CROWDER,BRYANT	10:08			
	10:08			SUB IN: ANDELKOVIC,STEFAN
	10:08			SUB OUT: BURRELL,ANTOINE
FOUL by WHITE,RONNIE	10:03			
TURNOVER by WHITE,RONNIE	10:03			
	09:51			TURNOVER by ANTHONY,REGGIE
	09:35			FOUL by GIBSON,JACOB
GOOD! FT by PLEASANT,EVERRETT	09:35	67-68	V 1	
MISSED FT by PLEASANT,EVERRETT	09:35			
	09:35			REBOUND (DEF) by ANTHONY,REGGIE
	09:14			MISSED LAYUP by ANDELKOVIC,STEFAN
BLOCK by WHITE,RONNIE	09:14			
REBOUND (DEF) by WHITE,RONNIE	09:13			
TURNOVER by PLEASANT,EVERRETT	09:10			
	09:10			SUB IN: FRANCIS,WILL
	09:10			SUB IN: MCNAIR,BLAKE
	09:10			SUB OUT: WARD,ZAC
	09:10			SUB OUT: HUDSON,JOHN
FOUL by WHITE,RONNIE	08:57			
	08:57	68-68	T	GOOD! FT by ANDELKOVIC,STEFAN
	08:57	69-68	H 1	GOOD! FT by ANDELKOVIC,STEFAN
GOOD! 3PTR by OWENS,JR	08:42	69-71	V 2	
	08:24	71-71	T	GOOD! LAYUP by FRANCIS,WILL [PNT]
MISSED JUMPER by ADAMS,ANTHONY	07:56			
	07:56			REBOUND (DEF) by MCNAIR,BLAKE
	07:45	73-71	H 2	GOOD! LAYUP by FRANCIS,WILL [PNT]
MISSED JUMPER by JONES,JEREMY	07:37			
	07:37			BLOCK by GIBSON,JACOB
REBOUND (OFF) by TEAM	07:37			
TIMEOUT MEDIA	07:37			
TURNOVER by WHITE,RONNIE	07:24			
	07:02			MISSED 3PTR by GIBSON,JACOB
	07:02			REBOUND (OFF) by ANDELKOVIC,STEFAN
	06:50			MISSED 3PTR by FRANCIS,WILL
	06:50			REBOUND (OFF) by ANDELKOVIC,STEFAN
	06:45			MISSED LAYUP by ANDELKOVIC,STEFAN
	06:45			REBOUND (OFF) by ANDELKOVIC,STEFAN
	06:42			MISSED LAYUP by ANDELKOVIC,STEFAN
	06:42			REBOUND (OFF) by GIBSON,JACOB
	06:38	75-71	H 4	GOOD! LAYUP by GIBSON,JACOB [PNT]
MISSED 3PTR by JONES,JEREMY	06:30			
REBOUND (DEADB) by TEAM	06:30			
	06:27			FOUL by ANTHONY,REGGIE
MISSED JUMPER by JONES,JEREMY	06:18			
	06:18			REBOUND (DEF) by FRANCIS,WILL
	06:01			MISSED LAYUP by ANTHONY,REGGIE
REBOUND (DEF) by WHITE,RONNIE	06:01			
MISSED 3PTR by OWENS,JR	05:51			
	05:51			REBOUND (DEF) by MCNAIR,BLAKE

VISITORS: Tex. A&M-Commerce	Time	Score	Margin	HOME: Harding
	05:32			MISSED 3PTR by MCNAIR,BLAKE
REBOUND (DEF) by PLEASANT,EVERRETT	05:32			
TURNOVER by ADAMS,ANTHONY	05:24			
	05:23			STEAL by MCNAIR,BLAKE
	05:19			TURNOVER by MCNAIR,BLAKE
SUB IN: CROWDER,BRYANT	05:19			
SUB IN: CARSON,DE'ANDRE	05:19			
SUB OUT: ADAMS,ANTHONY	05:19			
SUB OUT: PLEASANT,EVERRETT	05:19			
	05:19			SUB IN: HUDSON,JOHN
	05:19			SUB OUT: ANTHONY,REGGIE
	05:05			FOUL by ANDELKOVIC,STEFAN
MISSED FT by CROWDER,BRYANT	05:05			
REBOUND (DEADB) by TEAM	05:05			
MISSED FT by CROWDER,BRYANT	05:05			
	05:05			REBOUND (DEF) by ANDELKOVIC,STEFAN
	04:43	78-71	H 7	GOOD! 3PTR by FRANCIS,WILL
	04:43			ASSIST by MCNAIR,BLAKE
MISSED JUMPER by WHITE,RONNIE	04:24			
REBOUND (DEADB) by TEAM	04:24			
	04:22			FOUL by ANDELKOVIC,STEFAN
SUB IN: ADAMS,ANTHONY	04:22			
SUB OUT: OWENS,JR	04:22			
	04:22			SUB IN: BURRELL,ANTOINE
	04:22			SUB OUT: ANDELKOVIC,STEFAN
GOOD! DUNK by WHITE,RONNIE [PNT]	04:19	78-73	H 5	
ASSIST by JONES,JEREMY	04:19			
	04:07			MISSED LAYUP by FRANCIS,WILL
BLOCK by CARSON,DE'ANDRE	04:07			
	04:07			REBOUND (OFF) by TEAM
	03:49	80-73	H 7	GOOD! LAYUP by GIBSON,JACOB [PNT]
MISSED 3PTR by CARSON,DE'ANDRE	03:40			
REBOUND (OFF) by WHITE,RONNIE	03:40			
GOOD! 3PTR by JONES,JEREMY	03:26	80-76	H 4	
ASSIST by ADAMS,ANTHONY	03:26			
	03:08			MISSED 3PTR by HUDSON,JOHN
REBOUND (DEF) by ADAMS,ANTHONY	03:08			
	03:01			FOUL by BURRELL,ANTOINE
GOOD! FT by CROWDER,BRYANT	03:01	80-77	H 3	
MISSED FT by CROWDER,BRYANT	03:01			
	03:01			REBOUND (DEF) by ANDELKOVIC,STEFAN
	03:01			SUB IN: ANDELKOVIC,STEFAN
	03:01			SUB OUT: BURRELL,ANTOINE
FOUL by ADAMS,ANTHONY	02:52			
	02:52	81-77	H 4	GOOD! FT by FRANCIS,WILL
	02:52	82-77	H 5	GOOD! FT by FRANCIS,WILL
TURNOVER by JONES,JEREMY	02:50			
	02:49			STEAL by GIBSON,JACOB
	02:40			MISSED LAYUP by ANDELKOVIC,STEFAN
REBOUND (DEF) by ADAMS,ANTHONY	02:40			
GOOD! 3PTR by CARSON,DE'ANDRE [FB]	02:35	82-80	H 2	
ASSIST by ADAMS,ANTHONY	02:35			
	02:18			TURNOVER by FRANCIS,WILL
STEAL by JONES,JEREMY	02:16			
MISSED JUMPER by JONES,JEREMY	02:08			
	02:08			REBOUND (DEF) by HUDSON,JOHN
	02:03			TURNOVER by HUDSON,JOHN
STEAL by CROWDER,BRYANT	02:03			

VISITORS: Tex. A&M-Commerce	Time	Score	Margin	HOME: Harding
MISSED 3PTR by JONES,JEREMY	01:56			
	01:56			REBOUND (DEF) by TEAM
FOUL by CROWDER,BRYANT	01:36			
	01:36	83-80	H 3	GOOD! FT by HUDSON,JOHN
	01:36			MISSED FT by HUDSON,JOHN
REBOUND (DEF) by ADAMS,ANTHONY	01:36			
SUB IN: OWENS,JR	01:36			
SUB OUT: CROWDER,BRYANT	01:36			
GOOD! JUMPER by ADAMS,ANTHONY	01:26	83-82	H 1	
FOUL by ADAMS,ANTHONY	00:59			
	00:59	84-82	H 2	GOOD! FT by FRANCIS,WILL
	00:59	85-82	H 3	GOOD! FT by FRANCIS,WILL
MISSED 3PTR by OWENS,JR	00:48			
	00:48			REBOUND (DEF) by FRANCIS,WILL
	00:38			TURNOVER by FRANCIS,WILL
STEAL by CARSON,DE'ANDRE	00:38			
	00:37			FOUL by FRANCIS,WILL
GOOD! FT by ADAMS,ANTHONY	00:37	85-83	H 2	
GOOD! FT by ADAMS,ANTHONY	00:37	85-84	H 1	
TIMEOUT 30SEC	00:37			
	00:28			TURNOVER by FRANCIS,WILL
STEAL by ADAMS,ANTHONY	00:27			
MISSED LAYUP by JONES,JEREMY	00:25			
REBOUND (OFF) by WHITE,RONNIE	00:25			
GOOD! LAYUP by WHITE,RONNIE [PNT]	00:23	85-86	V 1	
	00:18			TIMEOUT 30SEC
	00:11			MISSED 3PTR by ANDELKOVIC,STEFAN
	00:11			REBOUND (OFF) by FRANCIS,WILL
FOUL by ADAMS,ANTHONY	00:06			
	00:06	86-86	T	GOOD! FT by FRANCIS,WILL
TIMEOUT TEAM	00:06			
	00:06	87-86	H 1	GOOD! FT by FRANCIS,WILL
	00:06			TIMEOUT TEAM
SUB IN: ASRAT,ISAAC	00:06			
SUB OUT: WHITE,RONNIE	00:06			
	00:06			SUB IN: ANTHONY,REGGIE
	00:06			SUB OUT: HUDSON,JOHN
GOOD! 3PTR by CARSON,DE'ANDRE	00:02	87-89	V 2	
ASSIST by JONES,JEREMY	00:02			

Tex. A&M-Commerce 89, Harding 87

Period 2-only	In Paint	Off T/O	2nd Chance	Fast Break	Bench	****	
TAMUC	20	12	11	3	16		Score tied - 2 times
HU	14	12	11	0	9		Lead changed - 8 times

Tex. A&M-Commerce vs Harding
12/7/2015; 7:30 p.m. at Searcy, Ark. (Rhodes-Reaves Field House)
Scoring/Runs Reference

Period 1				Period 2			
Tex. A&M-Commerce	Score		Harding	Tex. A&M-Commerce	Score		Harding
19:46,- OWENS,JUMPER	2	2-0 -2				X	FRANCIS,3PTR - 19:41
		2-3 1	3 FRANCIS,3PTR,-,19:23	19:15,-,WHITE,LAYUP	2P	48-45 -3	
19:05 - ADAMS,LAYUP	X					X	GIBSON,3PTR - 18:55
			X GIBSON,3PTR - 18:53	18:38 - OWENS,3PTR	X		
18:46,-,ADAMS TURN TO				18:34,- OWENS,JUMPER	2P	50-45 -5	
		2-6 4	3 ANDELKOVIC,3PTR,- 18:25			X	ANDELKOVIC,LAYUP - 18:04
18:01 - WHITE,LAYUP	X			17:54 - ADAMS,3PTR	X		
			TO MCNAIR TURN -,17:55	17:41,- CROWDER,LAYUP	2P	52-45 -7	
17:51,-,JONES TURN TO							GIBSON TURN - 17:19
		2-9 7	3 FRANCIS,3PTR,-,17:39				
17:22 - OWENS,LAYUP	X			17:10,- CROWDER,JUMPER	2P	54-45 -9	
17:18,- CROWDER,LAYUP	2P	4-9 5				X	ANDELKOVIC,3PTR - 16:55
		4-11 7	2 KAVAS,JUMPER,- 17:04			X	ANDELKOVIC,LAYUP - 16:47
16:47,- JONES,LAYUP	2P	6-11 5		16:22,- ADAMS,LAYUP	2P	56-45 -11	
		6-14 8	3 FRANCIS,3PTR,-,16:25			X	FRANCIS,JUMPER - 16:09
16:08,- WHITE,LAYUP	2P	8-14 6				56-48 -8	3 MCNAIR,3PTR,- 16:02
		8-17 9	3 KAVAS,3PTR,-,15:37	15:31 - OWENS,3PTR	X		
15:21,- ADAMS,LAYUP	2P	10-17 7				56-51 -5	3 HUDSON,3PTR,- 15:14
			X KAVAS,LAYUP - 15:02	14:58,-,ADAMS TURN TO		56-53 -3	2P FRANCIS,LAYUP,- 14:49
14:48 - CROWDER,LAYUP	X			14:30 - WHITE,LAYUP	X		
			X ANDELKOVIC,3PTR - 14:33				TO BURRELL TURN - 14:15
14:26,- ADAMS,JUMPER	2	12-17 5		14:02 - CARSON,3PTR	X		
			X GIBSON,3PTR - 14:07			56-55 -1	2P BURRELL,LAYUP,- 13:45
13:58 - ADAMS,JUMPER	X			13:40,-,FOFANG TURN			TO
13:53,-,FOFANG TURN	TO					56-58 2	3 MCNAIR,3PTR,- 13:33
		12-20 8	3 ANDELKOVIC,3PTR,- 13:36	13:18,- FOFANG,LAYUP	2P	58-58 0	
13:12,-,CROWDER TURN	TO						X HUDSON,3PTR - 12:53
		12-21 9	1 GIBSON,FT,-,13:06	12:34 - FOFANG,LAYUP	X		
		12-22 10	1 GIBSON,FT,-,13:06				TO MCNAIR TURN - 12:25
12:41 - JONES,3PTR	X						
			X MCNAIR,3PTR - 12:32				
12:29 - ASRAT,3PTR	X						
12:16 - JONES,3PTR	X						

			X	MCNAIR,3PTR - 12:04
			X	ANDELKOVIC,3PTR - 11:50
11:38 - JONES,3PTR	X			
11:20,- ,PLEASANT,JUMPER	2	14-22 8		
11:20,- ,PLEASANT,FT	1	15-22 7		
				TO BAILEY TURN -,11:06
11:01 - CARSON,3PTR	X			
10:58,- ,WHITE,LAYUP	2 ^P	17-22 5		
			X	ANTHONY,JUMPER - 10:40
			X	HUDSON,3PTR - 10:26
10:18,-,JONES,FT	1	18-22 4		
10:18,-,JONES,FT	1	19-22 3		
			X	FRANCIS,3PTR - 10:00
09:50 - OWENS,JUMPER	X			
		19-24 5	2	ANTHONY,JUMPER,- ,09:34
09:04,- ,CROWDER,LAYUP	2 ^P	21-24 3		
		21-26 5	2 ^P	FRANCIS,LAYUP,- ,08:51
08:44,-,ADAMS,FT	1	22-26 4		
08:44,-,ADAMS,FT	1	23-26 3		
		23-28 5	2 ^P	BURRELL,LAYUP,- ,08:39
			X	BURRELL,FT - 08:32
			X	GIBSON,LAYUP - 08:30
08:12,- ,CROWDER,DUNK	2 ^P	25-28 3		
			X	GIBSON,3PTR - 07:59
07:43,- ,CROWDER,LAYUP	2 ^P	27-28 1		
		27-31 4	3	FRANCIS,3PTR,-,07:30
07:20,- ,CROWDER,LAYUP	2 ^P	29-31 2		
		29-34 5	3	FRANCIS,3PTR,-,07:05
06:43 - CROWDER,JUMPER	X			
		29-37 8	3	FRANCIS,3PTR,-,06:34
06:15 - ADAMS,JUMPER	X			
			X	FRANCIS,3PTR - 06:07
05:57 - OWENS,3PTR	X			
05:48,- ,CROWDER,LAYUP	2 ^P	31-37 6		
05:48 - ADAMS,FT	X			
05:48 - ADAMS,FT	X			
05:48,- ,CROWDER,FT	1	32-37 5		

12:19,-,ADAMS,FT	1	59-58 -1		
12:19,-,ADAMS,FT	1	60-58 -2		
12:15,- ,CARSON,3PTR	3	63-58 -5		
			X	BURRELL,FT - 11:59
		63-59 -4	1	BURRELL,FT,-,11:59
11:45,- ,PLEASANT,LAYUP	2 ^P	65-59 -6		
		65-62 -3	3	GIBSON,3PTR,- ,11:23
11:05 - ADAMS,LAYUP	X			
11:03,- ,FOFANG,LAYUP	2 ^P	67-62 -5		
			X	GIBSON,3PTR - 10:49
		67-64 -3	2 ^P	BURRELL,LAYUP,- ,10:46
10:32,-,ADAMS TURN TO				
		67-65 -2	1	GIBSON,FT,-,10:08
			X	GIBSON,FT - 10:08
			X	GIBSON,FT - 10:08
		67-66 -1	1	GIBSON,FT,-,10:08
		67-67 0	1	GIBSON,FT,-,10:08
10:03,-,WHITE TURN TO				
				TO ANTHONY TURN - ,09:51
09:35,-,PLEASANT,FT	1	68-67 -1		
09:35 - PLEASANT,FT	X			
			X	ANDELKOVIC,LAYUP - 09:14
09:10,-,PLEASANT TURN				
		68-68 0	1	ANDELKOVIC,FT,- ,08:57
		68-69 1	1	ANDELKOVIC,FT,- ,08:57
08:42,-,OWENS,3PTR	3	71-69 -2		
		71-71 0	2 ^P	FRANCIS,LAYUP,- ,08:24
07:56 - ADAMS,JUMPER	X			
		71-73 2	2 ^P	FRANCIS,LAYUP,- ,07:45
07:37 - JONES,JUMPER	X			
07:24,-,WHITE TURN TO				
			X	GIBSON,3PTR - 07:02
			X	FRANCIS,3PTR - 06:50
			X	ANDELKOVIC,LAYUP - 06:45
			X	ANDELKOVIC,LAYUP - 06:42
		71-75 4	2 ^P	GIBSON,LAYUP,- ,06:38
06:30 - JONES,3PTR	X			

05:20,-
JONES,LAYUP

04:53 -
CARSON,LAYUP

04:26 -
PLEASANT,LAYUP

03:57 -
PLEASANT,LAYUP

03:55,-
FOFANG,LAYUP

03:25,-,JONES,FT

03:25,-,JONES,FT

02:57,-,JONES TURN TO

02:33,-,ASRAT,3PTR

01:58 -
PLEASANT,LAYUP

01:51 -
CARSON,LAYUP

01:19,-
PLEASANT,FT

01:19,-
PLEASANT,FT

00:52,-,ASRAT,3PTR

00:07 - ADAMS,3PTR

ANDELKOVIC,LAYUP,-
05:36

BAILEY,FT - 05:06

BAILEY,FT,-,05:06

ANDELKOVIC,3PTR -
04:41

GIBSON,3PTR - 04:17

BAILEY TURN -,03:33

BAILEY TURN -,03:11

ANDELKOVIC,3PTR -
02:49

MCNAIR,JUMPER -
02:16

ANDELKOVIC,3PTR -
01:32

MCNAIR,JUMPER,-
01:01

GIBSON,3PTR,-,00:34

GIBSON,3PTR - 00:00

06:18 -
JONES,JUMPER

05:51 - OWENS,3PTR

05:24,-,ADAMS TURN TO

05:05 - CROWDER,FT

05:05 - CROWDER,FT

04:24 -
WHITE,JUMPER

04:19,-,WHITE,DUNK

03:40 -
CARSON,3PTR

03:26,-,JONES,3PTR

03:01,-
CROWDER,FT

03:01 - CROWDER,FT

02:50,-,JONES TURN TO

02:35,-
CARSON,3PTR

02:08 -
JONES,JUMPER

01:56 - JONES,3PTR

01:26,-
ADAMS,JUMPER

00:48 - OWENS,3PTR

00:37,-,ADAMS,FT

00:37,-,ADAMS,FT

ANTHONY,LAYUP -
06:01

MCNAIR,3PTR -
05:32

MCNAIR TURN -
05:19

FRANCIS,3PTR,-
04:43

FRANCIS,LAYUP -
04:07

GIBSON,LAYUP,-
03:49

HUDSON,3PTR -
03:08

FRANCIS,FT,-,02:52

FRANCIS,FT,-,02:52

ANDELKOVIC,LAYUP
- 02:40

FRANCIS TURN -
02:18

HUDSON TURN -
02:03

HUDSON,FT,-,01:36

HUDSON,FT - 01:36

FRANCIS,FT,-,00:59

FRANCIS,FT,-,00:59

FRANCIS TURN -
00:38

FRANCIS TURN -
00:28

X

2^p

86-85
-1

X

86-86
0

1

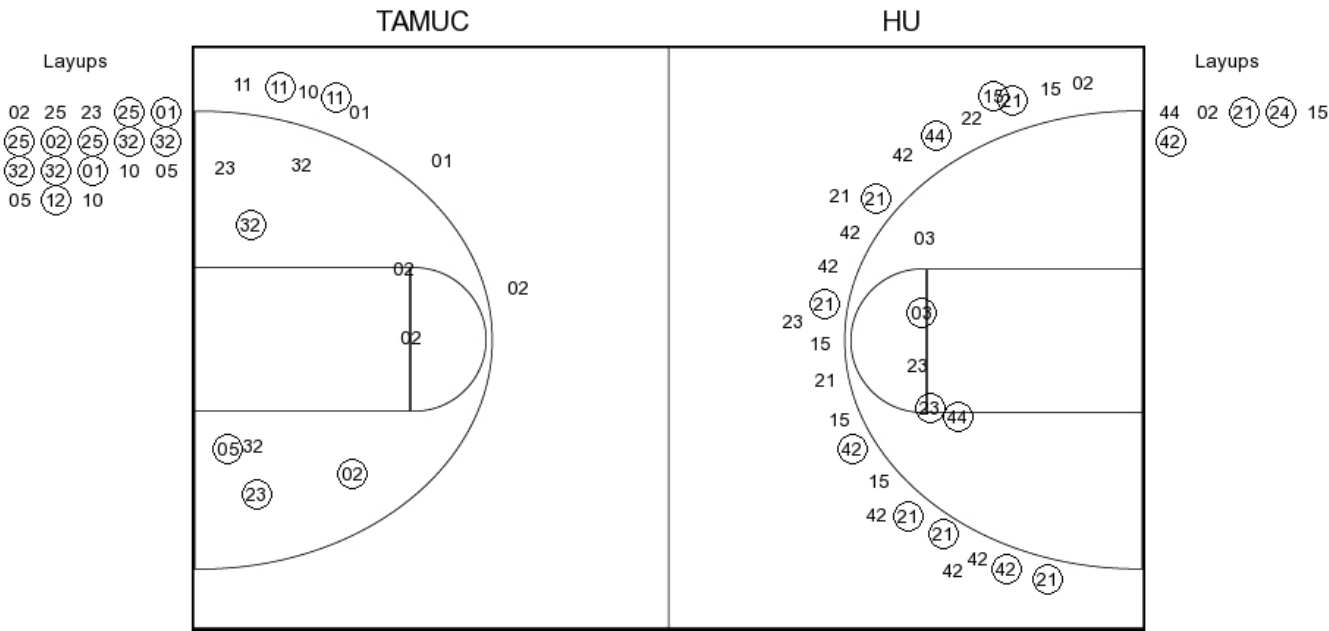
86-87
1

1

3

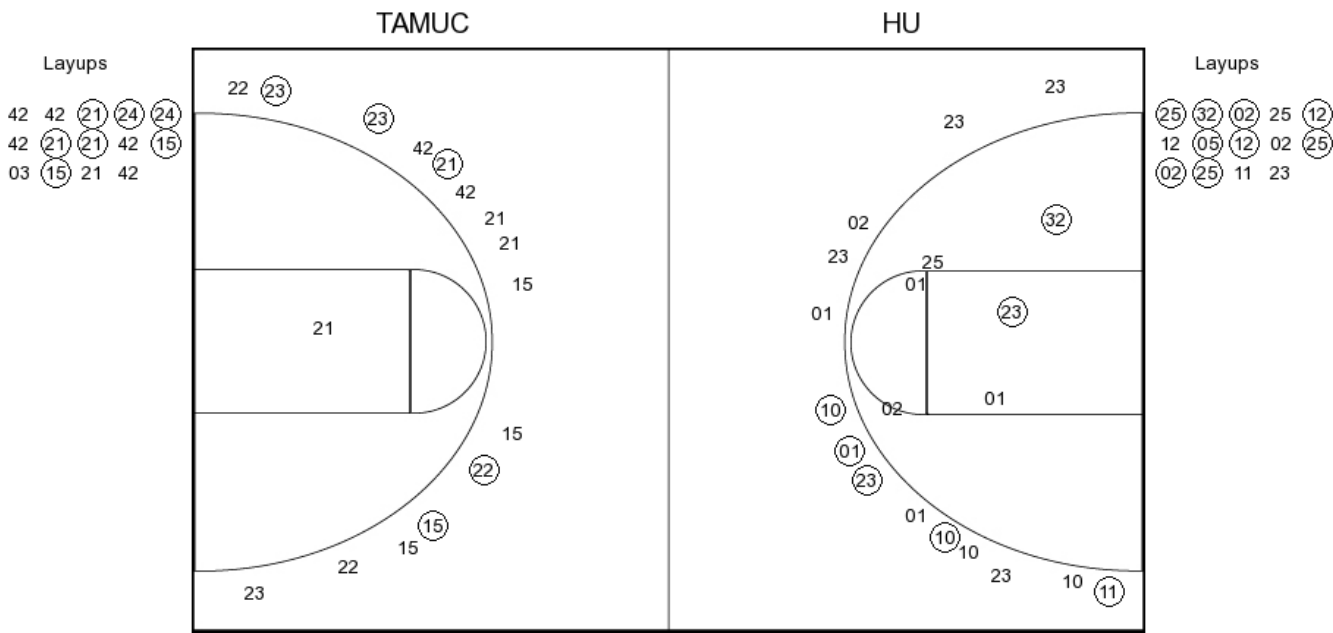
89-87
-2

PERIOD 1



TAMUC PERIOD 1		HU PERIOD 1	
FG Made	17	FG Made	16
FG Attempted	37	FG Attempted	35
3PFG Made	2	3PFG Made	10
3PFG Attempted	9	3PFG Attempted	25

PERIOD 2



TAMUC PERIOD 2

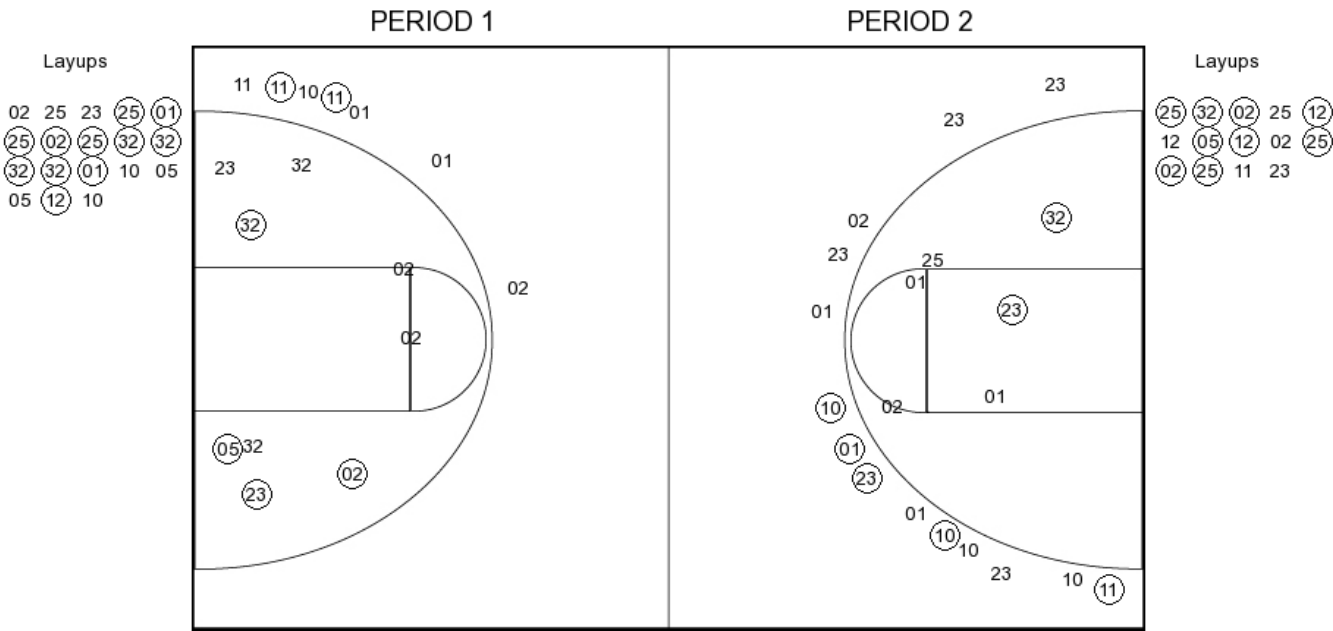
FG Made	16
FG Attempted	34
3PFG Made	5
3PFG Attempted	14

HU PERIOD 2

FG Made	12
FG Attempted	31
3PFG Made	5
3PFG Attempted	15

Tex. A&M-Commerce vs Harding
OFFICIAL SHOT CHART
 12/7/2015 at Searcy, Ark. (Rhodes-Reaves Field House)

Tex. A&M-Commerce

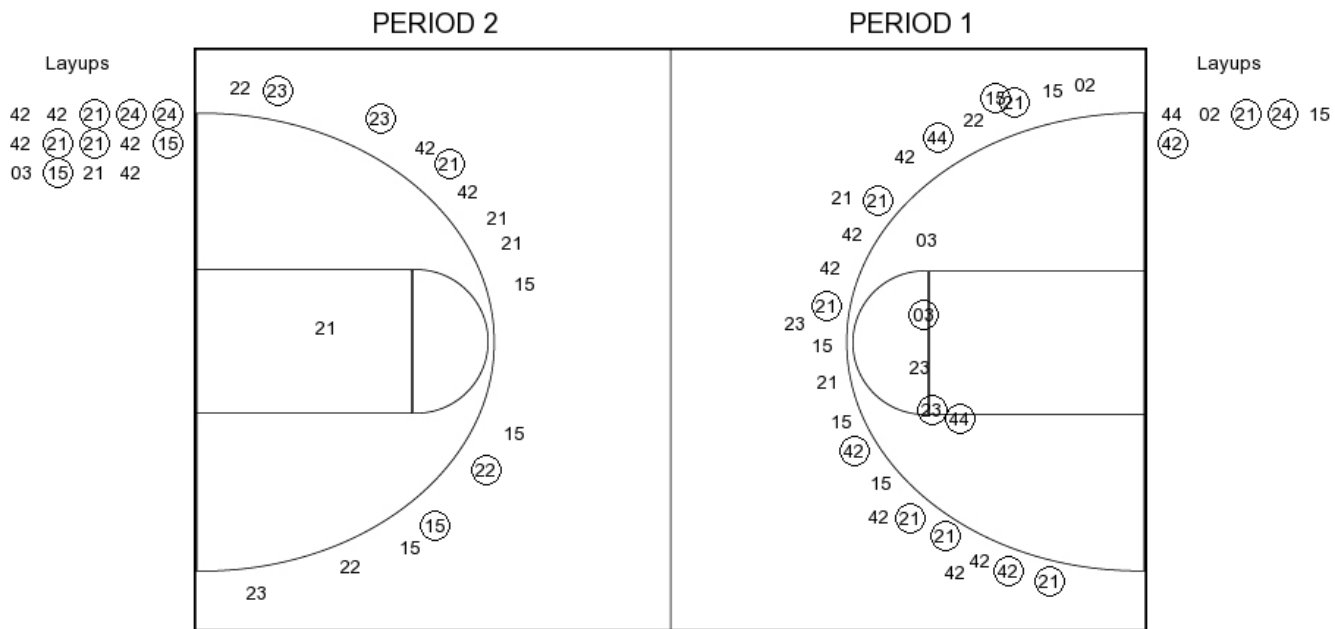


TAMUC PERIOD 1		TAMUC PERIOD 2	
FG Made	17	FG Made	16
FG Attempted	37	FG Attempted	34
3PFG Made	2	3PFG Made	5
3PFG Attempted	9	3PFG Attempted	14

OFFICIAL SHOT CHART

12/7/2015 at Searcy, Ark. (Rhodes-Reaves Field House)

Harding



HU PERIOD 1

FG Made	16
FG Attempted	35
3PFG Made	10
3PFG Attempted	25

HU PERIOD 2

FG Made	12
FG Attempted	31
3PFG Made	5
3PFG Attempted	15