

# NEW MEXICO VS SAN DIEGO STATE



2/6/2016

Steve Fisher Court at Viejas Arena

## FINAL STATS

**SAN DIEGO STATE**

*(18-6 (11-0 MW))*

**78**

**NEW MEXICO**

*(14-9 (7-3 MW))*

**71**

*Start Time: 1:10 pm PST*

*Officials: Randall McCall, Kevin Brill, Gregory Nixon*

*Attendance: 12414*

# Official Basketball Box Score -- Game Totals -- Final Statistics

## NEW MEXICO vs SAN DIEGO STATE

2/6/2016 1:10 pm PST at Steve Fisher Court at Viejas Arena

### NEW MEXICO 71 - 14-9 (7-3 MW)

##	Player	S	Total			Rebounds			PF	TP	A	TO	Blk	Stl	Min
			FG-FGA	3PT	FG-FGA	FT-FTA	Off Reb	Def Reb							
01	NEAL,CULLEN	g	3-12	0-3	1-2	2	2	4	2	7	2	2	0	2	40
04	BROWN,ELIJAH	g	4-20	3-12	12-14	1	3	4	1	23	5	1	0	1	43
11	AGET,OBIJ	c	3-4	0-0	0-0	1	2	3	4	6	0	1	1	0	19
20	LOGWOOD,SAM	f	2-9	0-2	0-0	1	5	6	3	4	2	2	3	4	41
32	WILLIAMS,TIM	f	8-15	0-0	5-7	3	4	7	0	21	2	1	1	0	43
03	HUNTER,JORDAN		1-4	1-2	0-0	0	1	1	2	3	1	1	0	1	8
14	KUIPER,DANE		0-0	0-0	0-0	0	1	1	0	0	0	0	0	0	4
21	ADAMS,XAVIER		3-5	1-1	0-0	4	2	6	4	7	0	0	1	0	22
23	FURSTINGER,JOE		0-2	0-0	0-0	1	0	1	0	0	1	0	1	0	5
TEAM						5	1	6	0		2				
TOTALS			24-71	5-20	18-23	18	21	39	16	71	13	10	7	8	225

Deadball Rebounds: 2,3

FG %	1st Half:	10-33	30.3%	2nd Half:	12-31	38.7%	OT:	2-7	28.6%	Game:	24-71	33.8%
	1st Qtr	10-33	30.3%	2nd Qtr	12-31	38.7%	3rd Qtr	2-7	28.6%	4th Qtr	-	0%
3FG %	1st Half:	1-8	12.5%	2nd Half:	4-9	44.4%	OT:	0-3	00.0%	Game:	5-20	25.0%
	1st Qtr	1-8	12.5%	2nd Qtr	4-9	44.4%	3rd Qtr	0-3	00.0%	4th Qtr	-	0%
FT %	1st Half:	8-9	88.9%	2nd Half:	9-12	75.0%	OT:	1-2	50.0%	Game:	18-23	78.3%
	1st Qtr	8-9	88.9%	2nd Qtr	9-12	75.0%	3rd Qtr	1-2	50.0%	4th Qtr	-	0%

### SAN DIEGO STATE 78 - 18-6 (11-0 MW)

##	Player	S	Total			Rebounds			PF	TP	A	TO	Blk	Stl	Min
			FG-FGA	3PT	FG-FGA	FT-FTA	Off Reb	Def Reb							
00	SPENCER,SKYLAR	f	4-4	0-0	0-0	5	5	10	2	8	0	0	3	0	33
12	KELL,TREY	g	5-17	1-11	1-3	1	4	5	0	12	1	2	0	2	35
13	SHEPARD,WINSTON	f	5-10	0-0	5-6	4	3	7	3	15	6	4	1	1	40
14	CHEATHAM,ZYLAN	f	4-4	1-1	0-0	3	1	4	3	9	0	1	2	0	23
42	HEMSLEY,JEREMY	g	6-16	1-7	10-10	0	6	6	1	23	0	3	0	1	38
03	CHOL,ANGELO		3-5	0-0	0-0	3	1	4	1	6	0	0	0	0	12
04	ALLEN,DAKARAI		1-3	0-1	0-0	0	3	3	4	2	1	0	0	1	11
20	SHRIGLEY,MATT		0-5	0-5	0-0	0	1	1	1	0	0	0	0	0	10
21	POPE,MALIK		1-4	1-2	0-0	1	6	7	1	3	2	3	0	2	23
TEAM						0	0	0	0		0				
TOTALS			29-68	4-27	16-19	17	30	47	16	78	10	13	6	7	225

Deadball Rebounds: 1,2

FG %	1st Half:	10-26	38.5%	2nd Half:	15-33	45.5%	OT:	4-9	44.4%	Game:	29-68	42.6%
	1st Qtr	10-26	38.5%	2nd Qtr	15-33	45.5%	3rd Qtr	4-9	44.4%	4th Qtr	-	0%
3FG %	1st Half:	1-11	09.1%	2nd Half:	3-15	20.0%	OT:	0-1	00.0%	Game:	4-27	14.8%
	1st Qtr	1-11	09.1%	2nd Qtr	3-15	20.0%	3rd Qtr	0-1	00.0%	4th Qtr	-	0%
FT %	1st Half:	7-8	87.5%	2nd Half:	5-7	71.4%	OT:	4-4	100.0%	Game:	16-19	84.2%
	1st Qtr	7-8	87.5%	2nd Qtr	5-7	71.4%	3rd Qtr	4-4	100.0%	4th Qtr	-	0%

Officials: Randall McCall, Kevin Brill, Gregory Nixon  
 Technical Fouls: NEW MEXICO- None. SAN DIEGO STATE- None.  
 Attendance: 12414

Score by periods	1st	2nd	3rd	Total
NEW MEXICO	29	37	5	71
SAN DIEGO STATE	28	38	12	78

Points	In Paint	Off T/O	2nd 2nd Chance	Fast Break	Bench
NM	30	10	21	8	10
SDSU	48	9	21	8	11

Last FG - NM 3rd-02:36, SDSU 3rd-00:29.  
 Largest lead - NEW MEXICO by 5 2nd-00:22; SAN DIEGO STATE by 7 2nd-09:15  
 NM led for 16:53. SDSU led for 22:46. Game was tied for 5:03.

Score tied - 6 times  
 Lead changed - 10 times

**Official Basketball Box Score -- Game Totals -- First Half Statistics**  
**NEW MEXICO vs SAN DIEGO STATE**  
**2/6/2016 1:10 pm PST at Steve Fisher Court at Viejas Arena**

**NEW MEXICO 29 • 14-9 (7-3 MW)**

##	Player	S	Total			Rebounds			PF	TP	A	TO	Blk	Stl	Min
			FG-FGA	3PT	FG-FGA	FT-FTA	Off Reb	Def Reb							
01	NEAL,CULLEN	g	1-7	0-2	0-0	2	2	4	1	2	1	1	0	0	19
04	BROWN,ELIJAH	g	0-6	0-3	7-8	1	1	2	0	7	3	1	0	0	18
11	AGET,OBIJ	c	1-2	0-0	0-0	0	2	2	2	2	0	1	0	0	10
20	LOGWOOD,SAM	f	2-5	0-1	0-0	0	1	1	1	4	0	2	1	4	16
32	WILLIAMS,TIM	f	4-7	0-0	1-1	2	1	3	0	9	0	1	0	0	18
03	HUNTER,JORDAN		1-3	1-2	0-0	0	0	0	1	3	0	1	0	1	4
14	KUIPER,DANE		0-0	0-0	0-0	0	1	1	0	0	0	0	0	0	4
21	ADAMS,XAVIER		1-1	0-0	0-0	2	0	2	2	2	0	0	0	0	6
23	FURSTINGER,JOE		0-2	0-0	0-0	1	0	1	0	0	1	0	1	0	5
TEAM						3	1	4	0		1				
Totals			10-33	1-8	8-9	11	9	20	7	29	5	8	2	5	100

FG % Half: 10-33 30.3%  
 3FG % Half: 1-8 12.5%  
 FT % Half: 8-9 88.9%

**SAN DIEGO STATE 28 • 18-6 (11-0 MW)**

##	Player	S	Total			Rebounds			PF	TP	A	TO	Blk	Stl	Min
			FG-FGA	3PT	FG-FGA	FT-FTA	Off Reb	Def Reb							
00	SPENCER,SKYLAR	f	0-0	0-0	0-0	1	2	3	1	0	0	0	1	0	11
12	KELL,TREY	g	3-9	0-5	1-2	1	1	2	0	7	1	1	0	2	15
13	SHEPARD,WINSTON	f	1-1	0-0	0-0	1	1	2	1	2	1	3	0	1	16
14	CHEATHAM,ZYLAN	f	2-2	1-1	0-0	0	0	0	1	5	0	1	1	0	11
42	HEMSLEY,JEREMY	g	0-4	0-3	6-6	0	2	2	0	6	0	3	0	1	16
03	CHOL,ANGELO		3-5	0-0	0-0	3	1	4	0	6	0	0	0	0	9
04	ALLEN,DAKARAI		1-1	0-0	0-0	0	2	2	3	2	1	0	0	1	6
20	SHRIGLEY,MATT		0-2	0-2	0-0	0	0	0	1	0	0	0	0	0	7
21	POPE,MALIK		0-2	0-0	0-0	0	3	3	0	0	2	1	0	2	9
TEAM						0	0	0	0		0				
Totals			10-26	1-11	7-8	6	12	18	7	28	5	9	2	7	100

FG % Half: 10-26 38.5%  
 3FG % Half: 1-11 09.1%  
 FT % Half: 7-8 87.5%

Officials: Randall McCall, Kevin Brill, Gregory Nixon  
 Technical Fouls: NEW MEXICO- None. SAN DIEGO STATE- None.

Score by periods	1st	2nd	3rd	Total
NEW MEXICO	29	37	5	71
SAN DIEGO STATE	28	38	12	78

Points	In Paint	Off T/O	2nd Chance	Fast Break	Bench
NM	18	7	11	4	5
SDSU	18	4	0	8	8

Last FG - NM 1st-00:39, SDSU 1st-03:02.  
 NM led for 10:51. SDSU led for 6:54. Game was tied for 1:57.

Score tied - 2 times  
 Lead changed - 3 times

**NEW MEXICO vs SAN DIEGO STATE**  
**2/6/2016; 1:10 pm PST at Steve Fisher Court at Viejas Arena**  
**Period 1 Play-By-Play**

VISITORS: NEW MEXICO	Time	Score	Margin	HOME: SAN DIEGO STATE
	19:36	3-0	H 3	GOOD! 3PTR by CHEATHAM,ZYLAN
	19:36			ASSIST by KELL,TREY
TURNOVER by LOGWOOD,SAM	19:15			
	19:13			STEAL by KELL,TREY
	18:54			TURNOVER by SHEPARD,WINSTON
GOOD! DUNK by AGET,OBIJ [PNT]	18:47	3-2	H 1	
ASSIST by BROWN,ELIJAH	18:47			
	18:33			MISSED 3PTR by KELL,TREY
	18:33			REBOUND (OFF) by SPENCER,SKYLAR
	18:11			TURNOVER by HEMSLEY,JEREMY
STEAL by LOGWOOD,SAM	18:10			
MISSED 3PTR by LOGWOOD,SAM	17:43			
	17:43			REBOUND (DEF) by KELL,TREY
	17:23			MISSED 3PTR by HEMSLEY,JEREMY
REBOUND (DEF) by NEAL,CULLEN	17:23			
GOOD! LAYUP by NEAL,CULLEN [FB/PNT]	17:12	3-4	V 1	
	16:49			MISSED 3PTR by KELL,TREY
REBOUND (DEF) by TEAM	16:49			
TURNOVER by BROWN,ELIJAH	16:30			
	16:29			STEAL by SHEPARD,WINSTON
	16:19			FOUL by CHEATHAM,ZYLAN
	16:19			TURNOVER by CHEATHAM,ZYLAN
MISSED JUMPER by WILLIAMS,TIM	15:55			
REBOUND (OFF) by TEAM	15:55			
TIMEOUT media	15:50			
TURNOVER by TEAM	15:50			
	15:50			SUB IN: CHOL,ANGELO
	15:50			SUB IN: ALLEN,DAKARAI
	15:50			SUB OUT: HEMSLEY,JEREMY
	15:38			MISSED 3PTR by KELL,TREY
REBOUND (DEF) by LOGWOOD,SAM	15:38			
	15:33			FOUL by ALLEN,DAKARAI
MISSED 3PTR by BROWN,ELIJAH	15:15			
REBOUND (OFF) by WILLIAMS,TIM	15:15			
GOOD! DUNK by WILLIAMS,TIM [PNT]	15:11	3-6	V 3	
FOUL by AGET,OBIJ	14:50			
	14:50			MISSED FT by KELL,TREY
	14:50			REBOUND (DEADB) by TEAM
	14:50	4-6	V 2	GOOD! FT by KELL,TREY
	14:50			SUB IN: POPE,MALIK
	14:50			SUB OUT: CHEATHAM,ZYLAN
MISSED 3PTR by NEAL,CULLEN	14:29			
	14:29			REBOUND (DEF) by ALLEN,DAKARAI
	14:23	6-6	T	GOOD! LAYUP by KELL,TREY [FB/PNT]
	14:23			ASSIST by ALLEN,DAKARAI
MISSED JUMPER by BROWN,ELIJAH	13:57			
	13:57			REBOUND (DEF) by ALLEN,DAKARAI
	13:50			TURNOVER by SHEPARD,WINSTON
	13:50			SUB IN: HEMSLEY,JEREMY
	13:50			SUB IN: SHRIGLEY,MATT
	13:50			SUB OUT: KELL,TREY
	13:50			SUB OUT: SHEPARD,WINSTON
TURNOVER by AGET,OBIJ	13:29			

VISITORS: NEW MEXICO	Time	Score	Margin	HOME: SAN DIEGO STATE
	13:28			STEAL by POPE,MALIK
	13:22			MISSED 3PTR by SHRIGLEY,MATT
REBOUND (DEF) by AGET,OBIJ	13:22			
	13:12			FOUL by ALLEN,DAKARAI
GOOD! FT by BROWN,ELIJAH	13:12	6-7	V 1	
GOOD! FT by BROWN,ELIJAH	13:12	6-8	V 2	
GOOD! FT by BROWN,ELIJAH	13:12	6-9	V 3	
SUB IN: ADAMS,XAVIER	13:12			
SUB OUT: AGET,OBIJ	13:12			
	13:12			SUB IN: SHEPARD,WINSTON
	13:12			SUB OUT: ALLEN,DAKARAI
	13:03	8-9	V 1	GOOD! LAYUP by CHOL,ANGELO [PNT]
	13:03			ASSIST by POPE,MALIK
	12:53			FOUL by SHRIGLEY,MATT
GOOD! FT by BROWN,ELIJAH	12:53	8-10	V 2	
GOOD! FT by BROWN,ELIJAH	12:53	8-11	V 3	
	12:35			MISSED JUMPER by CHOL,ANGELO
	12:35			REBOUND (OFF) by CHOL,ANGELO
	12:26			FOUL by SHEPARD,WINSTON
	12:26			TURNOVER by SHEPARD,WINSTON
MISSED JUMPER by NEAL,CULLEN	12:02			
	12:02			REBOUND (DEF) by POPE,MALIK
	11:53	10-11	V 1	GOOD! LAYUP by CHOL,ANGELO [FB/PNT]
	11:53			ASSIST by POPE,MALIK
TIMEOUT MEDIA	11:50			
	11:50			SUB IN: KELL,TREY
	11:50			SUB OUT: SHRIGLEY,MATT
	11:50			SUB OUT: CHOL,ANGELO
MISSED JUMPER by LOGWOOD,SAM	11:33			
REBOUND (OFF) by ADAMS,XAVIER	11:33			
GOOD! TIPIN by ADAMS,XAVIER [PNT]	11:28	10-13	V 3	
	11:12			MISSED JUMPER by POPE,MALIK
REBOUND (DEF) by WILLIAMS,TIM	11:12			
MISSED JUMPER by LOGWOOD,SAM	10:49			
REBOUND (OFF) by TEAM	10:49			
SUB IN: HUNTER,JORDAN	10:44			
SUB OUT: NEAL,CULLEN	10:44			
	10:44			SUB IN: CHEATHAM,ZYLAN
	10:44			SUB OUT: POPE,MALIK
MISSED 3PTR by BROWN,ELIJAH	10:43			
	10:43			REBOUND (DEF) by HEMSLEY,JEREMY
FOUL by ADAMS,XAVIER	10:36			
	10:36	11-13	V 2	GOOD! FT by HEMSLEY,JEREMY
	10:36	12-13	V 1	GOOD! FT by HEMSLEY,JEREMY
GOOD! 3PTR by HUNTER,JORDAN	10:09	12-16	V 4	
ASSIST by BROWN,ELIJAH	10:09			
	09:36	14-16	V 2	GOOD! LAYUP by SHEPARD,WINSTON [PNT]
MISSED JUMPER by WILLIAMS,TIM	09:13			
	09:13			BLOCK by SPENCER,SKYLAR
REBOUND (OFF) by TEAM	09:11			
TIMEOUT 30SEC	09:10			
GOOD! JUMPER by LOGWOOD,SAM [PNT]	09:05	14-18	V 4	
FOUL by HUNTER,JORDAN	08:47			
SUB IN: AGET,OBIJ	08:47			
SUB IN: NEAL,CULLEN	08:47			
SUB OUT: BROWN,ELIJAH	08:47			
SUB OUT: WILLIAMS,TIM	08:47			
	08:36			TURNOVER by KELL,TREY

VISITORS: NEW MEXICO	Time	Score	Margin	HOME: SAN DIEGO STATE
STEAL by HUNTER,JORDAN	08:34			
TURNOVER by HUNTER,JORDAN	08:33			
	08:32			STEAL by HEMSLEY,JEREMY
	08:11			MISSED 3PTR by HEMSLEY,JEREMY
REBOUND (DEF) by AGET,OBIJ	08:11			
TURNOVER by LOGWOOD,SAM	08:00			
	08:00			STEAL by KELL,TREY
	07:53			MISSED 3PTR by KELL,TREY
REBOUND (DEF) by NEAL,CULLEN	07:53			
MISSED 3PTR by HUNTER,JORDAN	07:47			
REBOUND (OFF) by NEAL,CULLEN	07:47			
MISSED 3PTR by NEAL,CULLEN	07:41			
REBOUND (OFF) by ADAMS,XAVIER	07:41			
MISSED JUMPER by HUNTER,JORDAN	07:28			
	07:28			REBOUND (DEF) by SHEPARD,WINSTON
	07:17			MISSED 3PTR by HEMSLEY,JEREMY
	07:17			REBOUND (OFF) by SHEPARD,WINSTON
FOUL by ADAMS,XAVIER	07:14			
	07:14			TIMEOUT media
SUB IN: BROWN,ELIJAH	07:14			
SUB IN: KUIPER,DANE	07:14			
SUB IN: WILLIAMS,TIM	07:14			
SUB OUT: HUNTER,JORDAN	07:14			
SUB OUT: ADAMS,XAVIER	07:14			
SUB OUT: LOGWOOD,SAM	07:14			
	07:14			SUB IN: ALLEN,DAKARAI
	07:14			SUB IN: SHRIGLEY,MATT
	07:14			SUB IN: POPE,MALIK
	07:14			SUB IN: CHOL,ANGELO
	07:14			SUB OUT: SPENCER,SKYLAR
	07:14			SUB OUT: KELL,TREY
	07:14			SUB OUT: CHEATHAM,ZYLAN
	07:14			SUB OUT: SHEPARD,WINSTON
	07:06			MISSED JUMPER by POPE,MALIK
	07:06			REBOUND (OFF) by CHOL,ANGELO
	07:02			MISSED JUMPER by HEMSLEY,JEREMY
REBOUND (DEF) by KUIPER,DANE	07:02			
MISSED JUMPER by BROWN,ELIJAH	06:47			
	06:47			REBOUND (DEADB) by TEAM
FOUL by AGET,OBIJ	06:44			
	06:21	16-18	V 2	GOOD! JUMPER by ALLEN,DAKARAI [PNT]
MISSED JUMPER by AGET,OBIJ	05:55			
	05:55			REBOUND (DEF) by POPE,MALIK
	05:31	18-18	T	GOOD! LAYUP by CHOL,ANGELO [PNT]
TURNOVER by WILLIAMS,TIM	05:13			
	05:12			STEAL by POPE,MALIK
FOUL by NEAL,CULLEN	05:09			
	05:09	19-18	H 1	GOOD! FT by HEMSLEY,JEREMY
	05:09	20-18	H 2	GOOD! FT by HEMSLEY,JEREMY
SUB IN: FURSTINGER,JOE	05:09			
SUB OUT: AGET,OBIJ	05:09			
	05:09			SUB IN: KELL,TREY
	05:09			SUB OUT: HEMSLEY,JEREMY
MISSED JUMPER by NEAL,CULLEN	04:54			
	04:54			REBOUND (DEF) by POPE,MALIK
	04:46	22-18	H 4	GOOD! LAYUP by KELL,TREY [FB/PNT]
MISSED JUMPER by NEAL,CULLEN	04:40			
REBOUND (OFF) by NEAL,CULLEN	04:40			

VISITORS: NEW MEXICO	Time	Score	Margin	HOME: SAN DIEGO STATE
TURNOVER by NEAL,CULLEN	04:37			
	04:36			STEAL by ALLEN,DAKARAI
	04:30	24-18	H 6	GOOD! LAYUP by KELL,TREY [FB/PNT]
MISSED JUMPER by WILLIAMS,TIM	04:06			
REBOUND (OFF) by WILLIAMS,TIM	04:06			
GOOD! LAYUP by WILLIAMS,TIM [PNT]	04:03	24-20	H 4	
	03:40			MISSED 3PTR by SHRIGLEY,MATT
REBOUND (DEF) by BROWN,ELIJAH	03:40			
	03:31			FOUL by ALLEN,DAKARAI
TIMEOUT media	03:31			
GOOD! FT by BROWN,ELIJAH	03:31	24-21	H 3	
GOOD! FT by BROWN,ELIJAH	03:31	24-22	H 2	
MISSED FT by BROWN,ELIJAH	03:31			
	03:31			REBOUND (DEF) by SPENCER,SKYLAR
SUB IN: LOGWOOD,SAM	03:31			
SUB OUT: KUIPER,DANE	03:31			
	03:31			SUB IN: CHEATHAM,ZYLAN
	03:31			SUB IN: SHEPARD,WINSTON
	03:31			SUB IN: SPENCER,SKYLAR
	03:31			SUB IN: HEMSLEY,JEREMY
	03:31			SUB OUT: ALLEN,DAKARAI
	03:31			SUB OUT: SHRIGLEY,MATT
	03:31			SUB OUT: POPE,MALIK
	03:31			SUB OUT: CHOL,ANGELO
FOUL by LOGWOOD,SAM	03:24			
	03:24	25-22	H 3	GOOD! FT by HEMSLEY,JEREMY
	03:24	26-22	H 4	GOOD! FT by HEMSLEY,JEREMY
GOOD! LAYUP by WILLIAMS,TIM [PNT]	03:18	26-24	H 2	
ASSIST by FURSTINGER,JOE	03:18			
	03:02	28-24	H 4	GOOD! JUMPER by CHEATHAM,ZYLAN [PNT]
	03:02			ASSIST by SHEPARD,WINSTON
MISSED JUMPER by BROWN,ELIJAH	02:33			
	02:33			REBOUND (DEF) by HEMSLEY,JEREMY
	02:00			MISSED 3PTR by KELL,TREY
BLOCK by LOGWOOD,SAM	02:00			
REBOUND (DEADB) by TEAM	01:59			
MISSED JUMPER by FURSTINGER,JOE	01:38			
	01:38			BLOCK by CHEATHAM,ZYLAN
	01:36			REBOUND (DEF) by SPENCER,SKYLAR
	01:32			TURNOVER by HEMSLEY,JEREMY
STEAL by LOGWOOD,SAM	01:31			
MISSED 3PTR by BROWN,ELIJAH	01:28			
REBOUND (OFF) by FURSTINGER,JOE	01:28			
MISSED JUMPER by FURSTINGER,JOE	01:24			
REBOUND (OFF) by BROWN,ELIJAH	01:24			
GOOD! JUMPER by WILLIAMS,TIM [PNT]	01:18	28-26	H 2	
ASSIST by BROWN,ELIJAH	01:18			
	01:17			FOUL by SPENCER,SKYLAR
GOOD! FT by WILLIAMS,TIM	01:17	28-27	H 1	
	01:17			SUB IN: CHOL,ANGELO
	01:17			SUB IN: SHRIGLEY,MATT
	01:17			SUB IN: POPE,MALIK
	01:17			SUB OUT: CHEATHAM,ZYLAN
	01:17			SUB OUT: KELL,TREY
	01:17			SUB OUT: SPENCER,SKYLAR
	00:57			TURNOVER by HEMSLEY,JEREMY
STEAL by LOGWOOD,SAM	00:56			
MISSED LAYUP by NEAL,CULLEN	00:51			

VISITORS: NEW MEXICO	Time	Score	Margin	HOME: SAN DIEGO STATE
	00:51			REBOUND (DEF) by CHOL,ANGELO
	00:45			TURNOVER by POPE,MALIK
STEAL by LOGWOOD,SAM	00:42			
GOOD! LAYUP by LOGWOOD,SAM [FB/PNT]	00:39	28-29	V 1	
ASSIST by NEAL,CULLEN	00:39			
	00:37			TIMEOUT 30SEC
	00:37			SUB IN: KELL,TREY
	00:37			SUB OUT: HEMSLEY,JEREMY
	00:19			MISSED JUMPER by CHOL,ANGELO
	00:19			REBOUND (OFF) by KELL,TREY
	00:03			MISSED JUMPER by KELL,TREY
BLOCK by FURSTINGER,JOE	00:02			
	00:01			REBOUND (OFF) by CHOL,ANGELO

NEW MEXICO 29, SAN DIEGO STATE 28

Period 1-only	In Paint	Off T/O	2nd Chance	Fast Break	Bench	
NM	18	7	11	4	5	Score tied - 0 times
SDSU	18	4	0	8	8	Lead changed - 4 times



**Official Basketball Box Score -- Game Totals -- Second Half Statistics**  
**NEW MEXICO vs SAN DIEGO STATE**  
**2/6/2016 1:10 pm PST at Steve Fisher Court at Viejas Arena**

**NEW MEXICO 37 • 14-9 (7-3 MW)**

##	Player	S	Total			Rebounds			PF	TP	A	TO	Blk	Stl	Min
			FG-FGA	3PT	FG-FGA	FT-FTA	Off Reb	Def Reb							
01	NEAL,CULLEN	g	2-5	0-1	0-0	0	0	0	0	4	1	0	0	2	16
04	BROWN,ELIJAH	g	3-9	3-6	5-6	0	2	2	0	14	2	0	0	1	20
11	AGET,OBIJ	c	2-2	0-0	0-0	1	0	1	2	4	0	0	1	0	9
20	LOGWOOD,SAM	f	0-3	0-1	0-0	1	3	4	2	0	2	0	2	0	20
32	WILLIAMS,TIM	f	3-7	0-0	4-6	1	2	3	0	10	2	0	1	0	20
03	HUNTER,JORDAN		0-1	0-0	0-0	0	1	1	1	0	1	0	0	0	4
14	KUIPER,DANE		0-0	0-0	0-0	0	0	0	0	0	0	0	0	0	0
21	ADAMS,XAVIER		2-4	1-1	0-0	2	1	3	2	5	0	0	1	0	11
23	FURSTINGER,JOE		0-0	0-0	0-0	0	0	0	0	0	0	0	0	0	0
TEAM						2	0	2	0		1				
Totals			12-31	4-9	9-12	7	9	16	7	37	8	1	5	3	100

FG % Half: 12-31 38.7%  
 3FG % Half: 4-9 12.5%  
 FT % Half: 9-12 75.0%

**SAN DIEGO STATE 38 • 18-6 (11-0 MW)**

##	Player	S	Total			Rebounds			PF	TP	A	TO	Blk	Stl	Min
			FG-FGA	3PT	FG-FGA	FT-FTA	Off Reb	Def Reb							
00	SPENCER,SKYLAR	f	4-4	0-0	0-0	3	3	6	1	8	0	0	2	0	17
12	KELL,TREY	g	2-6	1-5	0-1	0	2	2	0	5	0	1	0	0	15
13	SHEPARD,WINSTON	f	2-4	0-0	5-6	2	2	4	2	9	5	1	0	0	19
14	CHEATHAM,ZYLAN	f	2-2	0-0	0-0	3	1	4	2	4	0	0	1	0	12
42	HEMSLEY,JEREMY	g	4-10	1-4	0-0	0	2	2	0	9	0	0	0	0	17
03	CHOL,ANGELO		0-0	0-0	0-0	0	0	0	1	0	0	0	0	0	3
04	ALLEN,DAKARAI		0-2	0-1	0-0	0	1	1	1	0	0	0	0	0	5
20	SHRIGLEY,MATT		0-3	0-3	0-0	0	1	1	0	0	0	0	0	0	3
21	POPE,MALIK		1-2	1-2	0-0	1	2	3	1	3	0	2	0	0	9
TEAM						0	0	0	0		0				
Totals			15-33	3-15	5-7	9	14	23	8	38	5	4	3	0	100

FG % Half: 15-33 45.5%  
 3FG % Half: 3-15 09.1%  
 FT % Half: 5-7 71.4%

Officials: Randall McCall, Kevin Brill, Gregory Nixon  
 Technical Fouls: NEW MEXICO- None. SAN DIEGO STATE- None.

Score by periods	1st	2nd	3rd	Total
NEW MEXICO	29	37	5	71
SAN DIEGO STATE	28	38	12	78

Points	In Paint	Off T/O	2nd Chance	Fast Break	Bench
NM	12	3	10	4	5
SDSU	22	3	12	0	3

Last FG - NM 2nd-00:22, SDSU 2nd-00:08.  
 NM led for 4:31. SDSU led for 14:24. Game was tied for 1:05.

Score tied - 3 times  
 Lead changed - 4 times

**NEW MEXICO vs SAN DIEGO STATE**  
**2/6/2016; 1:10 pm PST at Steve Fisher Court at Viejas Arena**  
**Period 2 Play-By-Play**

VISITORS: NEW MEXICO	Time	Score	Margin	HOME: SAN DIEGO STATE
GOOD! JUMPER by WILLIAMS,TIM	19:35	28-31	V 3	
	19:06	31-31	T	GOOD! 3PTR by KELL,TREY
MISSED 3PTR by BROWN,ELIJAH	18:53			
	18:53			REBOUND (DEF) by SPENCER,SKYLAR
	18:41	33-31	H 2	GOOD! LAYUP by KELL,TREY [PNT]
FOUL by AGET,OBIJ	18:41			
	18:41			MISSED FT by KELL,TREY
REBOUND (DEF) by WILLIAMS,TIM	18:41			
GOOD! JUMPER by WILLIAMS,TIM	18:18	33-33	T	
ASSIST by BROWN,ELIJAH	18:18			
	17:58			MISSED JUMPER by SHEPARD,WINSTON
BLOCK by LOGWOOD,SAM	17:58			
	17:55			REBOUND (OFF) by SPENCER,SKYLAR
	17:46	35-33	H 2	GOOD! JUMPER by HEMSLEY,JEREMY
MISSED 3PTR by BROWN,ELIJAH	17:31			
	17:31			REBOUND (DEF) by CHEATHAM,ZYLAN
	17:22			TURNOVER by KELL,TREY
STEAL by BROWN,ELIJAH	17:21			
MISSED LAYUP by WILLIAMS,TIM	17:17			
	17:17			REBOUND (DEF) by HEMSLEY,JEREMY
	16:52			MISSED 3PTR by KELL,TREY
REBOUND (DEF) by BROWN,ELIJAH	16:52			
MISSED 3PTR by NEAL,CULLEN	16:47			
	16:47			REBOUND (DEF) by SPENCER,SKYLAR
SUB IN: ADAMS,XAVIER	16:37			
SUB OUT: AGET,OBIJ	16:37			
	16:37			SUB IN: ALLEN,DAKARAI
	16:37			SUB IN: POPE,MALIK
	16:37			SUB IN: CHOL,ANGELO
	16:37			SUB OUT: SPENCER,SKYLAR
	16:37			SUB OUT: KELL,TREY
	16:37			SUB OUT: CHEATHAM,ZYLAN
	16:32			TURNOVER by POPE,MALIK
STEAL by NEAL,CULLEN	16:32			
MISSED LAYUP by NEAL,CULLEN	16:29			
REBOUND (OFF) by ADAMS,XAVIER	16:29			
MISSED LAYUP by ADAMS,XAVIER	16:26			
REBOUND (OFF) by ADAMS,XAVIER	16:26			
	16:11			FOUL by CHOL,ANGELO
GOOD! FT by WILLIAMS,TIM	16:11	35-34	H 1	
MISSED FT by WILLIAMS,TIM	16:11			
	16:11			REBOUND (DEF) by ALLEN,DAKARAI
	15:54	38-34	H 4	GOOD! 3PTR by HEMSLEY,JEREMY
	15:54			ASSIST by SHEPARD,WINSTON
GOOD! 3PTR by BROWN,ELIJAH	15:43	38-37	H 1	
ASSIST by WILLIAMS,TIM	15:43			
	15:23			MISSED 3PTR by ALLEN,DAKARAI
REBOUND (DEF) by LOGWOOD,SAM	15:23			
MISSED JUMPER by WILLIAMS,TIM	14:57			
	14:57			REBOUND (DEF) by SHEPARD,WINSTON
	14:30			MISSED JUMPER by HEMSLEY,JEREMY
REBOUND (DEF) by WILLIAMS,TIM	14:30			
GOOD! LAYUP by WILLIAMS,TIM [PNT]	14:10	38-39	V 1	

VISITORS: NEW MEXICO	Time	Score	Margin	HOME: SAN DIEGO STATE
ASSIST by NEAL,CULLEN	14:10			
	13:55			TURNOVER by SHEPARD,WINSTON
STEAL by NEAL,CULLEN	13:55			
	13:35			FOUL by ALLEN,DAKARAI
TIMEOUT MEDIA	13:35			
	13:35			SUB IN: SHRIGLEY,MATT
	13:35			SUB IN: KELL,TREY
	13:35			SUB IN: SPENCER,SKYLAR
	13:35			SUB OUT: ALLEN,DAKARAI
	13:35			SUB OUT: CHOL,ANGELO
	13:35			SUB OUT: HEMSLEY,JEREMY
MISSED 3PTR by BROWN,ELIJAH	13:20			
	13:20			REBOUND (DEF) by SHRIGLEY,MATT
FOUL by ADAMS,XAVIER	13:13			
	13:01	40-39	H 1	GOOD! JUMPER by SPENCER,SKYLAR [PNT]
MISSED JUMPER by WILLIAMS,TIM	12:30			
	12:30			BLOCK by SPENCER,SKYLAR
REBOUND (OFF) by TEAM	12:29			
MISSED LAYUP by LOGWOOD,SAM	12:25			
	12:25			BLOCK by SPENCER,SKYLAR
	12:25			REBOUND (DEF) by KELL,TREY
	12:11	42-39	H 3	GOOD! DUNK by SPENCER,SKYLAR [PNT]
	12:11			ASSIST by SHEPARD,WINSTON
MISSED JUMPER by ADAMS,XAVIER	11:57			
	11:57			REBOUND (DEF) by SPENCER,SKYLAR
FOUL by ADAMS,XAVIER	11:57			
	11:57			TIMEOUT MEDIA
SUB IN: AGET,OBIJ	11:57			
SUB OUT: ADAMS,XAVIER	11:57			
	11:46			MISSED 3PTR by SHRIGLEY,MATT
	11:46			REBOUND (OFF) by POPE,MALIK
	11:41			MISSED 3PTR by KELL,TREY
REBOUND (DEADB) by TEAM	11:41			
	11:39			FOUL by POPE,MALIK
MISSED JUMPER by LOGWOOD,SAM	11:10			
	11:10			REBOUND (DEF) by KELL,TREY
	11:04			MISSED 3PTR by SHRIGLEY,MATT
	11:04			REBOUND (OFF) by SHEPARD,WINSTON
	10:58	44-39	H 5	GOOD! DUNK by SHEPARD,WINSTON [PNT]
MISSED JUMPER by BROWN,ELIJAH	10:37			
	10:37			REBOUND (DEF) by POPE,MALIK
	10:29			MISSED 3PTR by SHRIGLEY,MATT
REBOUND (DEF) by BROWN,ELIJAH	10:29			
MISSED JUMPER by NEAL,CULLEN	10:19			
REBOUND (OFF) by AGET,OBIJ	10:19			
GOOD! DUNK by AGET,OBIJ [PNT]	10:16	44-41	H 3	
SUB IN: HUNTER,JORDAN	10:14			
SUB OUT: NEAL,CULLEN	10:14			
	10:14			SUB IN: HEMSLEY,JEREMY
	10:14			SUB OUT: SHRIGLEY,MATT
	09:59	46-41	H 5	GOOD! LAYUP by SPENCER,SKYLAR [PNT]
	09:59			ASSIST by SHEPARD,WINSTON
MISSED JUMPER by BROWN,ELIJAH	09:28			
	09:28			REBOUND (DEF) by POPE,MALIK
FOUL by LOGWOOD,SAM	09:15			
	09:15	47-41	H 6	GOOD! FT by SHEPARD,WINSTON
	09:15	48-41	H 7	GOOD! FT by SHEPARD,WINSTON
	09:15			SUB IN: ALLEN,DAKARAI

VISITORS: NEW MEXICO	Time	Score	Margin	HOME: SAN DIEGO STATE
	09:15			SUB OUT: KELL,TREY
MISSED 3PTR by LOGWOOD,SAM	08:59			
	08:59			REBOUND (DEF) by HEMSLEY,JEREMY
FOUL by HUNTER,JORDAN	08:49			
TIMEOUT 30SEC	08:49			
	08:49			SUB IN: CHEATHAM,ZYLAN
	08:49			SUB OUT: SHEPARD,WINSTON
	08:45			TURNOVER by POPE,MALIK
GOOD! DUNK by AGET,OBIJ [PNT]	08:27	48-43	H 5	
ASSIST by WILLIAMS,TIM	08:27			
	08:09			MISSED 3PTR by POPE,MALIK
	08:09			REBOUND (OFF) by SPENCER,SKYLAR
	07:49			MISSED LAYUP by ALLEN,DAKARAI
BLOCK by AGET,OBIJ	07:49			
REBOUND (DEF) by HUNTER,JORDAN	07:48			
MISSED JUMPER by HUNTER,JORDAN	07:43			
	07:43			BLOCK by CHEATHAM,ZYLAN
REBOUND (OFF) by TEAM	07:43			
TIMEOUT media	07:43			
	07:43			SUB IN: KELL,TREY
	07:43			SUB IN: SHEPARD,WINSTON
	07:43			SUB OUT: POPE,MALIK
	07:43			SUB OUT: ALLEN,DAKARAI
GOOD! 3PTR by BROWN,ELIJAH	07:41	48-46	H 2	
ASSIST by HUNTER,JORDAN	07:41			
	07:20			MISSED 3PTR by HEMSLEY,JEREMY
	07:20			REBOUND (OFF) by CHEATHAM,ZYLAN
	07:15	50-46	H 4	GOOD! LAYUP by CHEATHAM,ZYLAN [PNT]
	07:15			ASSIST by SHEPARD,WINSTON
MISSED JUMPER by BROWN,ELIJAH	06:42			
REBOUND (OFF) by WILLIAMS,TIM	06:42			
	06:39			FOUL by SPENCER,SKYLAR
GOOD! FT by WILLIAMS,TIM	06:39	50-47	H 3	
MISSED FT by WILLIAMS,TIM	06:39			
	06:39			REBOUND (DEF) by SHEPARD,WINSTON
SUB IN: NEAL,CULLEN	06:39			
SUB OUT: HUNTER,JORDAN	06:39			
FOUL by AGET,OBIJ	06:31			
	06:31	51-47	H 4	GOOD! FT by SHEPARD,WINSTON
	06:31	52-47	H 5	GOOD! FT by SHEPARD,WINSTON
SUB IN: ADAMS,XAVIER	06:31			
SUB OUT: AGET,OBIJ	06:31			
	06:02			FOUL by SHEPARD,WINSTON
MISSED FT by BROWN,ELIJAH	06:02			
REBOUND (DEADB) by TEAM	06:02			
GOOD! FT by BROWN,ELIJAH	06:02	52-48	H 4	
	05:50			MISSED 3PTR by HEMSLEY,JEREMY
	05:50			REBOUND (OFF) by SPENCER,SKYLAR
	05:19			MISSED 3PTR by KELL,TREY
REBOUND (DEF) by ADAMS,XAVIER	05:19			
GOOD! JUMPER by NEAL,CULLEN [FB/PNT]	05:11	52-50	H 2	
	04:43	54-50	H 4	GOOD! DUNK by SPENCER,SKYLAR [PNT]
	04:43			ASSIST by SHEPARD,WINSTON
GOOD! LAYUP by ADAMS,XAVIER [PNT]	04:10	54-52	H 2	
ASSIST by BROWN,ELIJAH	04:10			
	03:45			MISSED JUMPER by SHEPARD,WINSTON
BLOCK by LOGWOOD,SAM	03:45			
	03:42			REBOUND (OFF) by CHEATHAM,ZYLAN

VISITORS: NEW MEXICO	Time	Score	Margin	HOME: SAN DIEGO STATE
	03:40	56-52	H 4	GOOD! LAYUP by CHEATHAM,ZYLAN [PNT]
	03:38			FOUL by CHEATHAM,ZYLAN
TIMEOUT media	03:38			
GOOD! FT by BROWN,ELIJAH	03:38	56-53	H 3	
GOOD! FT by BROWN,ELIJAH	03:38	56-54	H 2	
FOUL by LOGWOOD,SAM	03:18			
	03:18	57-54	H 3	GOOD! FT by SHEPARD,WINSTON
	03:18			MISSED FT by SHEPARD,WINSTON
REBOUND (DEADB) by TEAM	03:18			
	03:17			FOUL by CHEATHAM,ZYLAN
GOOD! FT by WILLIAMS,TIM	03:17	57-55	H 2	
GOOD! FT by WILLIAMS,TIM	03:17	57-56	H 1	
	02:54			MISSED 3PTR by KELL,TREY
REBOUND (DEF) by LOGWOOD,SAM	02:54			
GOOD! 3PTR by ADAMS,XAVIER	02:36	57-59	V 2	
ASSIST by LOGWOOD,SAM	02:36			
	02:10			MISSED JUMPER by HEMSLEY,JEREMY
BLOCK by WILLIAMS,TIM	02:10			
REBOUND (DEF) by LOGWOOD,SAM	02:08			
GOOD! LAYUP by NEAL,CULLEN [FB/PNT]	02:05	57-61	V 4	
ASSIST by LOGWOOD,SAM	02:05			
	02:04			TIMEOUT TEAM
	01:54	59-61	V 2	GOOD! JUMPER by HEMSLEY,JEREMY [PNT]
	01:44			FOUL by SHEPARD,WINSTON
GOOD! FT by BROWN,ELIJAH	01:44	59-62	V 3	
GOOD! FT by BROWN,ELIJAH	01:44	59-63	V 4	
	01:31			MISSED 3PTR by HEMSLEY,JEREMY
BLOCK by ADAMS,XAVIER	01:31			
	01:27			REBOUND (OFF) by CHEATHAM,ZYLAN
	01:20	61-63	V 2	GOOD! LAYUP by HEMSLEY,JEREMY [PNT]
MISSED JUMPER by WILLIAMS,TIM	00:51			
REBOUND (OFF) by LOGWOOD,SAM	00:51			
GOOD! 3PTR by BROWN,ELIJAH	00:22	61-66	V 5	
	00:15			MISSED JUMPER by HEMSLEY,JEREMY
	00:15			REBOUND (OFF) by SHEPARD,WINSTON
	00:14	63-66	V 3	GOOD! LAYUP by SHEPARD,WINSTON [PNT]
	00:12			TIMEOUT 30SEC
TURNOVER by TEAM	00:12			
	00:12			SUB IN: POPE,MALIK
	00:12			SUB OUT: CHEATHAM,ZYLAN
	00:08	66-66	T	GOOD! 3PTR by POPE,MALIK

NEW MEXICO 66, SAN DIEGO STATE 66

Period 2-only	In Paint	Off T/O	2nd Chance	Fast Break	Bench	
NM	12	3	10	4	5	Score tied - 2 times
SDSU	22	3	12	0	3	Lead changed - 4 times

**NEW MEXICO vs SAN DIEGO STATE**  
**2/6/2016; 1:10 pm PST at Steve Fisher Court at Viejas Arena**  
**Period 3 Play-By-Play**

VISITORS: NEW MEXICO	Time	Score	Margin	HOME: SAN DIEGO STATE
SUB IN: ADAMS,XAVIER	05:00			
SUB OUT: AGET,OBIJ	05:00			
	05:00			SUB IN: POPE,MALIK
	05:00			SUB OUT: CHEATHAM,ZYLAN
	04:41	68-66	H 2	GOOD! JUMPER by HEMSLEY,JEREMY [PNT]
GOOD! JUMPER by BROWN,ELIJAH	04:18	68-68	T	
	03:55			MISSED LAYUP by SHEPARD,WINSTON
	03:55			REBOUND (OFF) by SPENCER,SKYLAR
	03:32			MISSED JUMPER by SHEPARD,WINSTON
REBOUND (DEF) by WILLIAMS,TIM	03:32			
MISSED JUMPER by BROWN,ELIJAH	03:09			
	03:09			REBOUND (DEF) by KELL,TREY
	02:53			MISSED JUMPER by SHEPARD,WINSTON
REBOUND (DEF) by ADAMS,XAVIER	02:53			
GOOD! JUMPER by WILLIAMS,TIM	02:36	68-70	V 2	
	02:18			MISSED 3PTR by KELL,TREY
REBOUND (DEF) by LOGWOOD,SAM	02:18			
	02:10			FOUL by HEMSLEY,JEREMY
MISSED FT by NEAL,CULLEN	02:10			
REBOUND (DEADB) by TEAM	02:10			
GOOD! FT by NEAL,CULLEN	02:10	68-71	V 3	
TIMEOUT 30SEC	02:10			
	01:52			MISSED JUMPER by KELL,TREY
	01:52			REBOUND (OFF) by SHEPARD,WINSTON
	01:49	70-71	V 1	GOOD! TIPIN by SHEPARD,WINSTON [PNT]
MISSED JUMPER by LOGWOOD,SAM	01:19			
	01:19			BLOCK by SHEPARD,WINSTON
	01:17			REBOUND (DEADB) by TEAM
	01:05	72-71	H 1	GOOD! JUMPER by HEMSLEY,JEREMY [PNT]
MISSED 3PTR by BROWN,ELIJAH	00:51			
	00:51			REBOUND (DEF) by POPE,MALIK
	00:29	74-71	H 3	GOOD! LAYUP by SHEPARD,WINSTON [PNT]
TIMEOUT TEAM	00:28			
SUB IN: AGET,OBIJ	00:28			
SUB OUT: ADAMS,XAVIER	00:28			
TURNOVER by NEAL,CULLEN	00:17			
FOUL by NEAL,CULLEN	00:16			
	00:16	75-71	H 4	GOOD! FT by HEMSLEY,JEREMY
	00:16	76-71	H 5	GOOD! FT by HEMSLEY,JEREMY
MISSED 3PTR by BROWN,ELIJAH	00:14			
	00:14			REBOUND (DEF) by HEMSLEY,JEREMY
FOUL by BROWN,ELIJAH	00:09			
	00:09	77-71	H 6	GOOD! FT by HEMSLEY,JEREMY
	00:09	78-71	H 7	GOOD! FT by HEMSLEY,JEREMY
MISSED 3PTR by BROWN,ELIJAH	00:07			
	00:07			REBOUND (DEF) by HEMSLEY,JEREMY

NEW MEXICO 71, SAN DIEGO STATE 78

Period 3-only	In Paint	Off T/O	2nd Chance	Fast Break	Bench	
NM	0	0	0	0	0	Score tied - 2 times

<b>Period 3-only</b>	<b>In Paint</b>	<b>Off T/O</b>	<b>2nd Chance</b>	<b>Fast Break</b>	<b>Bench</b>	
SDSU	8	2	2	0	0	Lead changed - 2 times

**NEW MEXICO vs SAN DIEGO STATE**  
**2/6/2016; 1:10 pm PST at Steve Fisher Court at Viejas Arena**  
**Scoring/Runs Reference**

Period 1		Period 2		
NEW MEXICO	Score	SAN DIEGO STATE	Score	SAN DIEGO STATE
	0-3 3	CHEATHAM 3PTR - 19:36	19:35 - WILLIAMS JUMPER 2	31-28 3
19:15 - LOGWOOD TURN	TO			31-31 0
	TO	SHEPARD TURN - 18:54	18:53 - BROWN 3PTR	X
18:47 - AGET DUNK	2P 2-3 1			31-33 2
	X	KELL 3PTR - 18:33		2P
	TO	HEMSLEY TURN - 18:11	18:18 - WILLIAMS JUMPER 2	33-33 0
17:43 - LOGWOOD 3PTR	X			X
	TO	HEMSLEY 3PTR - 17:23		33-35 2
17:12 - NEAL LAYUP	2PF 4-3 -1		17:31 - BROWN 3PTR	X
	X	KELL 3PTR - 16:49		TO
16:30 - BROWN TURN	TO	CHEATHAM TURN - 16:19	17:17 - WILLIAMS LAYUP	X
	TO			X
15:55 - WILLIAMS JUMPER	X		16:47 - NEAL 3PTR	X
15:50 - TEAM TURN	TO			TO
	X	KELL 3PTR - 15:38	16:29 - NEAL LAYUP	X
15:15 - BROWN 3PTR	X		16:26 - ADAMS LAYUP	X
15:11 - WILLIAMS DUNK	2P 6-3 -3		16:11 - WILLIAMS FT	1 34-35 1
	X	KELL FT - 14:50	16:11 - WILLIAMS FT	X
	6-4 -2	KELL FT - 14:50		34-38 4
14:29 - NEAL 3PTR	X		15:43 - BROWN 3PTR	3 37-38 1
	6-6 0	KELL LAYUP - 14:23		X
13:57 - BROWN JUMPER	X		14:57 - WILLIAMS JUMPER	X
	TO	SHEPARD TURN - 13:50		X
13:29 - AGET TURN	TO	SHRIGLEY 3PTR - 13:22	14:10 - WILLIAMS LAYUP	2P 39-38 -1
	X			TO
13:12 - BROWN FT	1 7-6 -1		13:20 - BROWN 3PTR	X
13:12 - BROWN FT	1 8-6 -2			39-40 1
13:12 - BROWN FT	1 9-6 -3			2P
	9-8 -1	CHOL LAYUP - 13:03	12:30 - WILLIAMS JUMPER	X
12:53 - BROWN FT	1 10-8 -2		12:25 - LOGWOOD LAYUP	X
12:53 - BROWN FT	1 11-8 -3			39-42 3
	X	CHOL JUMPER - 12:35	11:57 - ADAMS JUMPER	X
	TO	SHEPARD TURN - 12:26		X
12:02 - NEAL JUMPER	X			X
	11-10 -1	CHOL LAYUP - 11:53	11:10 - LOGWOOD JUMPER	X
11:33 - LOGWOOD JUMPER	X			X
11:28 - ADAMS TIPIN	2P 13-10 -3			39-44 5
	X	POPE JUMPER - 11:12	10:37 - BROWN JUMPER	X
10:49 - LOGWOOD JUMPER	X			X
10:43 - BROWN 3PTR	X		10:19 - NEAL JUMPER	X
	13-11 -2	HEMSLEY FT - 10:36	10:16 - AGET DUNK	2P 41-44 3
	13-12 -1	HEMSLEY FT - 10:36		41-46 5
10:09 - HUNTER 3PTR	3 16-12 -4		09:28 - BROWN JUMPER	X
	16-14 -2	SHEPARD LAYUP - 09:36		41-47 6
09:13 - WILLIAMS JUMPER	X			1
				41-48 7
				1



09:05 - LOGWOOD JUMPER 

2 <sup>P</sup>	18-14 4
----------------	------------

 TO KELL TURN - 08:36

08:33 - HUNTER TURN TO 

X
---

 HEMSLEY 3PTR - 08:11

08:00 - LOGWOOD TURN TO 

X
---

 KELL 3PTR - 07:53

07:47 - HUNTER 3PTR 

X
---

07:41 - NEAL 3PTR 

X
---

07:28 - HUNTER JUMPER 

X
---

06:47 - BROWN JUMPER 

X
---

 HEMSLEY 3PTR - 07:17

05:55 - AGET JUMPER 

X
---

 POPE JUMPER - 07:06

05:13 - WILLIAMS TURN TO 

X
---

 HEMSLEY JUMPER - 07:02

04:54 - NEAL JUMPER 

X
---

 ALLEN JUMPER - 06:21

04:40 - NEAL JUMPER 

X
---

 CHOL LAYUP - 05:31

04:37 - NEAL TURN TO 

X
---

 HEMSLEY FT - 05:09

04:06 - WILLIAMS JUMPER 

X
---

 HEMSLEY FT - 05:09

04:03 - WILLIAMS LAYUP 

2 <sup>P</sup>	20-24 4
----------------	------------

 KELL LAYUP - 04:46

03:31 - BROWN FT 

1	21-24 3
---	------------

 KELL LAYUP - 04:30

03:31 - BROWN FT 

1	22-24 2
---	------------

03:31 - BROWN FT 

X
---

03:18 - WILLIAMS LAYUP 

2 <sup>P</sup>	22-25 3	1
	22-26 4	1

 HEMSLEY FT - 03:24

02:33 - BROWN JUMPER 

X
---

 HEMSLEY FT - 03:24

01:38 - FURSTINGER JUMPER 

X
---

 CHEATHAM JUMPER - 03:02

01:28 - BROWN 3PTR 

X
---

 KELL 3PTR - 02:00

01:24 - FURSTINGER JUMPER 

X
---

01:18 - WILLIAMS JUMPER 

2 <sup>P</sup>	24-26 2
----------------	------------

 HEMSLEY TURN - 01:32

01:17 - WILLIAMS FT 

1	24-28 4	2 <sup>P</sup>
---	------------	----------------

00:51 - NEAL LAYUP 

X
---

 HEMSLEY TURN - 00:57

00:39 - LOGWOOD LAYUP 

2 <sup>PF</sup>	26-28 2
-----------------	------------

 TO POPE TURN - 00:45

X
---

 CHOL JUMPER - 00:19

X
---

 KELL JUMPER - 00:03

08:59 - LOGWOOD 3PTR 

X
---

 TO POPE TURN - 08:45

08:27 - AGET DUNK 

2 <sup>P</sup>	43-48 5
----------------	------------

 POPE 3PTR - 08:09

07:43 - HUNTER JUMPER 

X
---

 ALLEN LAYUP - 07:49

07:41 - BROWN 3PTR 

3	46-48 2
---	------------

 HEMSLEY 3PTR - 07:20

06:42 - BROWN JUMPER 

X
---

 CHEATHAM LAYUP - 07:15

06:39 - WILLIAMS FT 

1	46-50 4	2 <sup>P</sup>
---	------------	----------------

06:39 - WILLIAMS FT 

X
---

06:02 - BROWN FT 

X
---

 SHEPARD FT - 06:31

06:02 - BROWN FT 

1	47-51 4	1
	47-52 5	1

 SHEPARD FT - 06:31

05:11 - NEAL JUMPER 

2 <sup>PF</sup>	48-52 4
-----------------	------------

 HEMSLEY 3PTR - 05:50

04:10 - ADAMS LAYUP 

2 <sup>P</sup>	50-52 2
----------------	------------

 KELL 3PTR - 05:19

04:06 - WILLIAMS JUMPER 

X
---

 SPENCER DUNK - 04:43

03:38 - BROWN FT 

1	50-54 4	2 <sup>P</sup>
---	------------	----------------

 SHEPARD JUMPER - 03:45

03:38 - BROWN FT 

1	52-54 2
---	------------

 CHEATHAM LAYUP - 03:40

03:17 - WILLIAMS FT 

1	52-56 4	2 <sup>P</sup>
---	------------	----------------

 SHEPARD FT - 03:18

03:17 - WILLIAMS FT 

1	53-56 3
---	------------

 SHEPARD FT - 03:18

02:36 - ADAMS 3PTR 

3	54-56 2
---	------------

 KELL 3PTR - 02:54

02:05 - NEAL LAYUP 

2 <sup>PF</sup>	54-57 3	1
-----------------	------------	---

01:44 - BROWN FT 

1	55-57 2
---	------------

01:44 - BROWN FT 

1	56-57 1
---	------------

 HEMSLEY 3PTR - 01:31

00:51 - WILLIAMS JUMPER 

X
---

 HEMSLEY LAYUP - 01:20

00:22 - BROWN 3PTR 

3	59-57 2
---	------------

 HEMSLEY JUMPER - 02:10

00:18 - WILLIAMS JUMPER 

2 <sup>PF</sup>	61-57 4
-----------------	------------

 HEMSLEY JUMPER - 01:54

00:12 - TEAM TURN TO 

1	61-59 2	2 <sup>P</sup>
	62-59 3	
	63-59 4	

 SHEPARD LAYUP - 00:14

66-66 0	3
------------	---

 POPE 3PTR - 00:08

Period 3

NEW MEXICO

Score

SAN DIEGO STATE

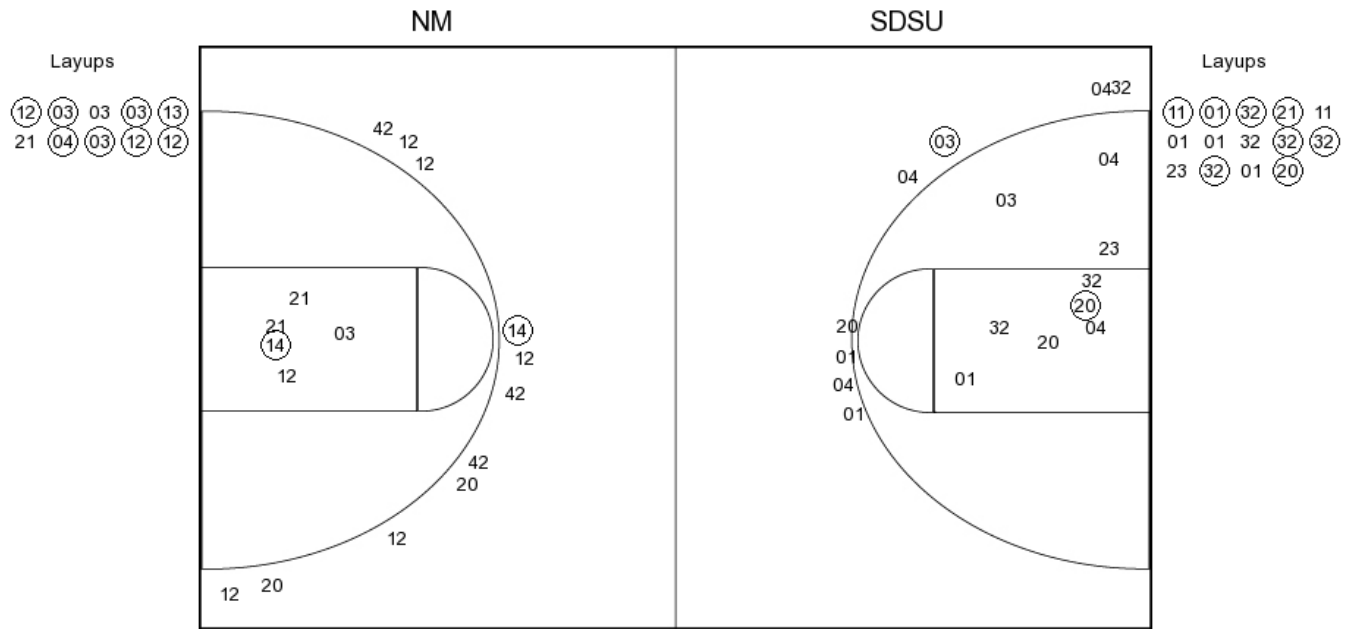
		$\frac{66-68}{2}$	2 <sup>P</sup>	HEMSLEY JUMPER - 04:41
04:18 - BROWN JUMPER	2	$\frac{68-68}{0}$		
			X	SHEPARD LAYUP - 03:55
			X	SHEPARD JUMPER - 03:32
03:09 - BROWN JUMPER	X			
			X	SHEPARD JUMPER - 02:53
02:36 - WILLIAMS JUMPER	2	$\frac{70-68}{-2}$		
			X	KELL 3PTR - 02:18
02:10 - NEAL FT	X			
02:10 - NEAL FT	1	$\frac{71-68}{-3}$		
			X	KELL JUMPER - 01:52
		$\frac{71-70}{-1}$	2 <sup>P</sup>	SHEPARD TIPIN - 01:49
01:19 - LOGWOOD JUMPER	X			
		$\frac{71-72}{1}$	2 <sup>P</sup>	HEMSLEY JUMPER - 01:05
00:51 - BROWN 3PTR	X			
		$\frac{71-74}{3}$	2 <sup>P</sup>	SHEPARD LAYUP - 00:29
00:17 - NEAL TURN	TO			
		$\frac{71-75}{4}$	1	HEMSLEY FT - 00:16
		$\frac{71-76}{5}$	1	HEMSLEY FT - 00:16
00:14 - BROWN 3PTR	X			
		$\frac{71-77}{6}$	1	HEMSLEY FT - 00:09
		$\frac{71-78}{7}$	1	HEMSLEY FT - 00:09
00:07 - BROWN 3PTR	X			

**NEW MEXICO vs SAN DIEGO STATE**

**OFFICIAL SHOT CHART**

2/6/2016 at Steve Fisher Court at Viejas Arena

**PERIOD 1**



**NM PERIOD 1**

FG Made	10
FG Attempted	33
3PFG Made	1
3PFG Attempted	8

**SDSU PERIOD 1**

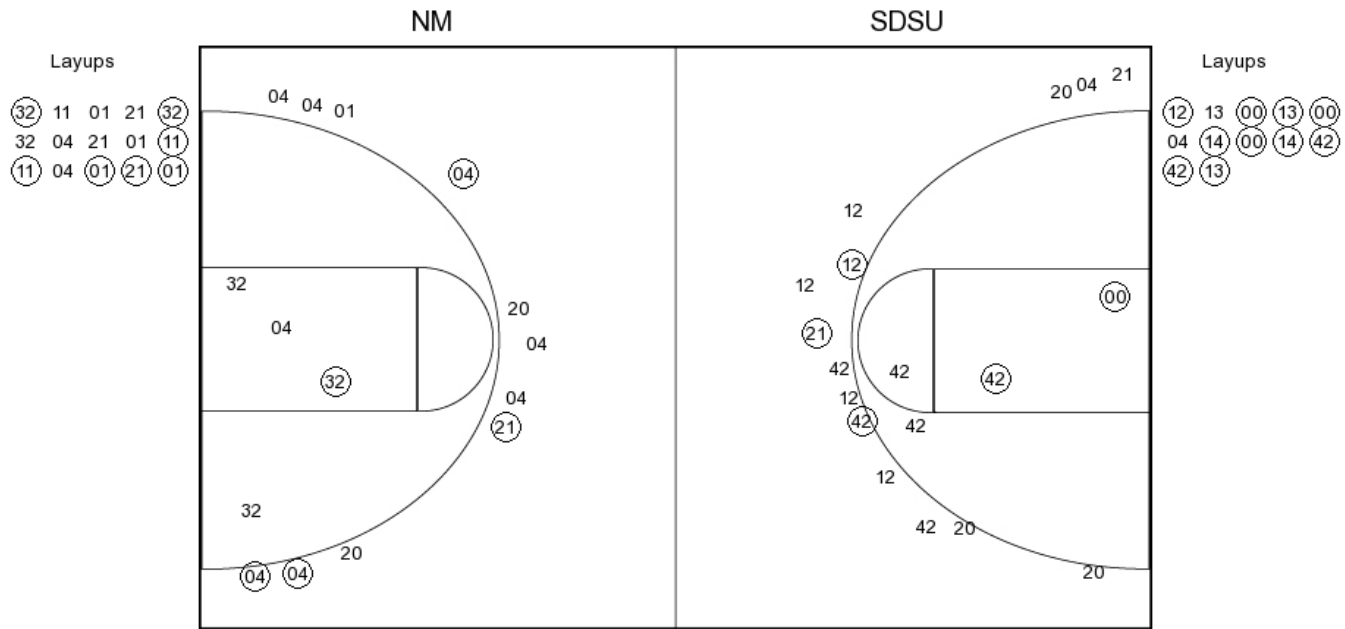
FG Made	10
FG Attempted	26
3PFG Made	1
3PFG Attempted	11

**NEW MEXICO vs SAN DIEGO STATE**

**OFFICIAL SHOT CHART**

2/6/2016 at Steve Fisher Court at Viejas Arena

**PERIOD 2**



**NM PERIOD 2**

FG Made	12
FG Attempted	31
3PFG Made	4
3PFG Attempted	9

**SDSU PERIOD 2**

FG Made	15
FG Attempted	33
3PFG Made	3
3PFG Attempted	15

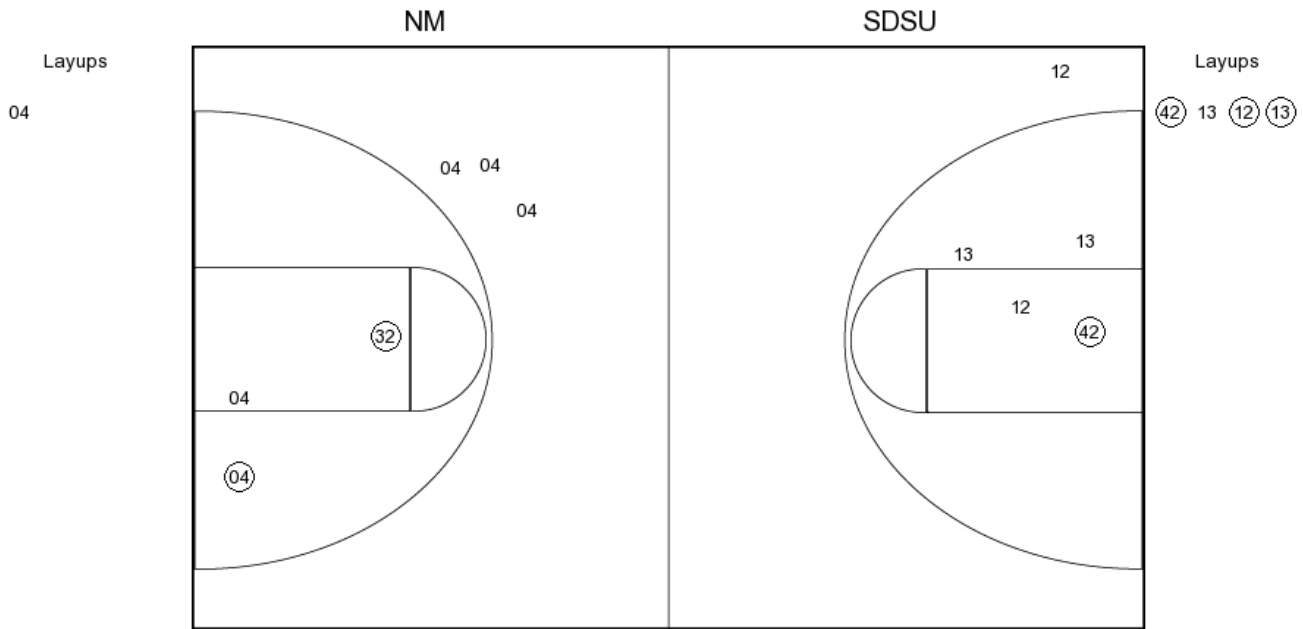
**NEW MEXICO vs SAN DIEGO STATE**

**OFFICIAL SHOT CHART**

2/6/2016 at Steve Fisher Court at Viejas Arena

---

**PERIOD 3**



**NM PERIOD 3**

- FG Made
- FG Attempted
- 3PFG Made
- 3PFG Attempted

**SDSU PERIOD 3**

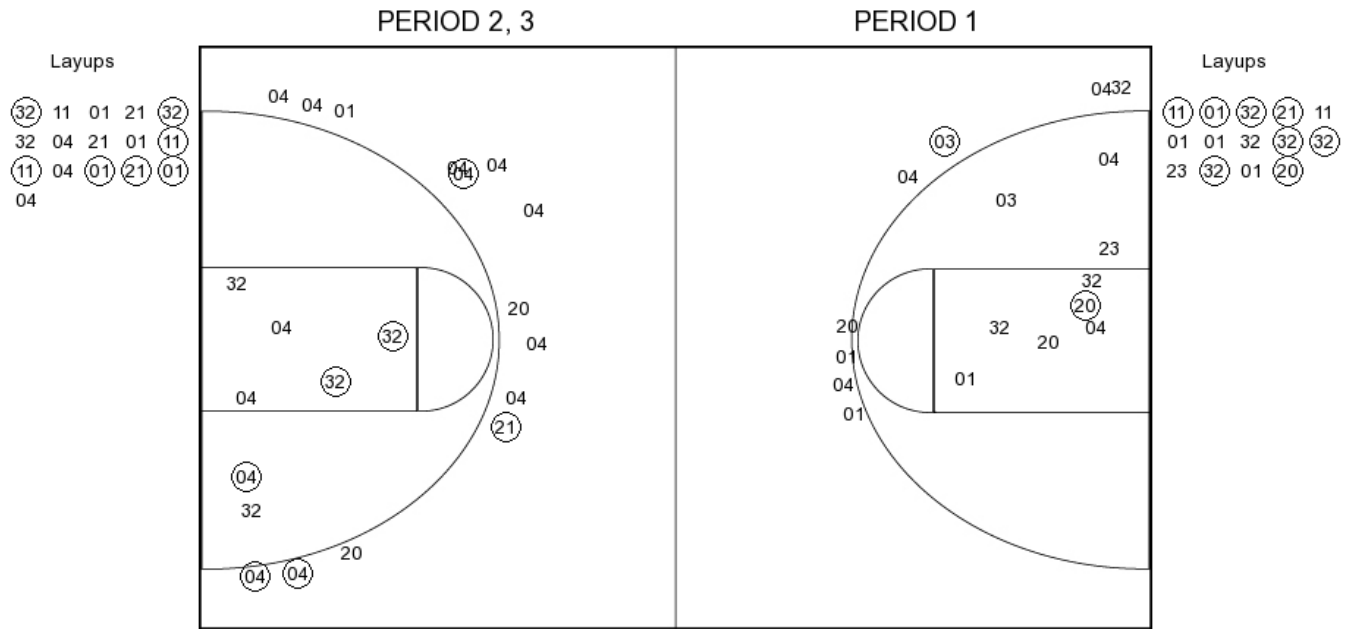
- FG Made
- FG Attempted
- 3PFG Made
- 3PFG Attempted

**NEW MEXICO vs SAN DIEGO STATE**

**OFFICIAL SHOT CHART**

2/6/2016 at Steve Fisher Court at Viejas Arena

**NEW MEXICO**



**NM PERIOD 1**

FG Made	10
FG Attempted	33
3PFG Made	1
3PFG Attempted	8

**NM PERIOD 2**

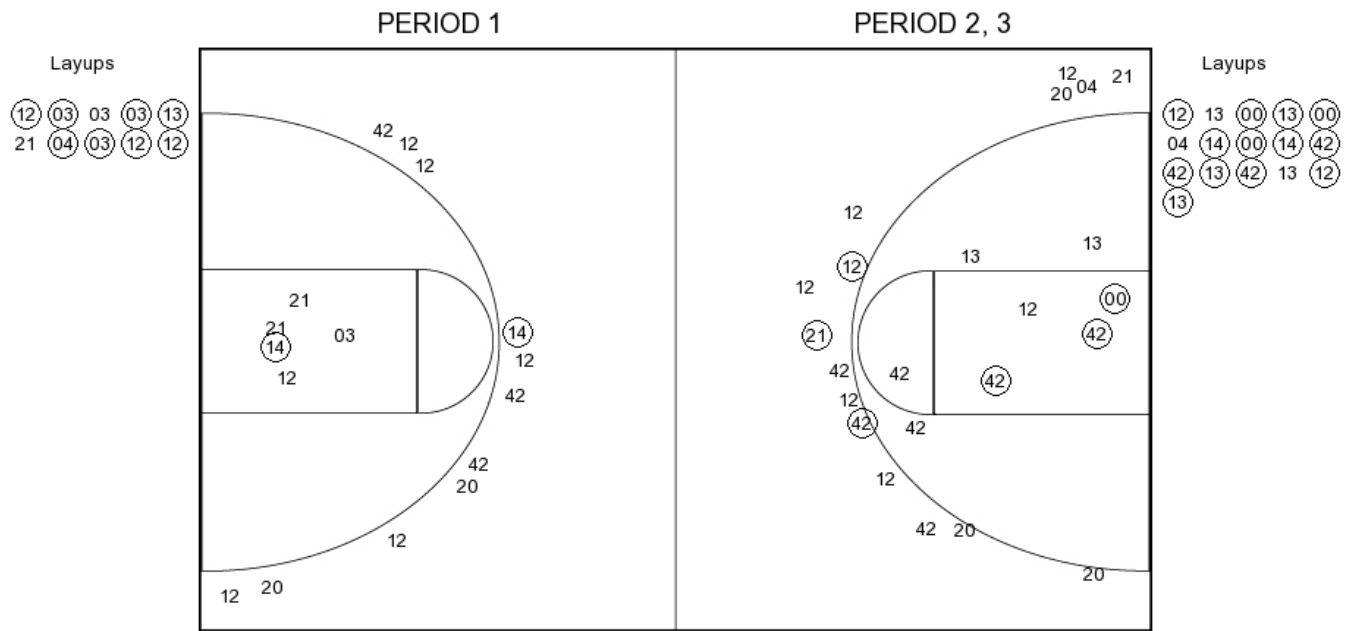
FG Made	12
FG Attempted	31
3PFG Made	4
3PFG Attempted	9

**NEW MEXICO vs SAN DIEGO STATE**

**OFFICIAL SHOT CHART**

2/6/2016 at Steve Fisher Court at Viejas Arena

**SAN DIEGO STATE**



**SDSU PERIOD 1**

FG Made	10
FG Attempted	26
3PFG Made	1
3PFG Attempted	11

**SDSU PERIOD 2**

FG Made	15
FG Attempted	33
3PFG Made	3
3PFG Attempted	15