

# SAN JOSE STATE VS SAN DIEGO STATE



1/6/2016

Steve Fisher Court at Viejas Arena

## FINAL STATS

**SAN DIEGO STATE**

*(10-6 (3-0 MW))*

**77**

**SAN JOSE STATE**

*(5-10 (0-3 MW))*

**62**

*Start Time: 7:01 pm PST*

*Officials: Kelly Self, Bill Vinovich, Keith Kimble*

*Attendance: 12414*

# Official Basketball Box Score -- Game Totals -- Final Statistics

## SAN JOSE STATE vs SAN DIEGO STATE

1/6/2016 7:01 pm PST at Steve Fisher Court at Viejas Arena

### SAN JOSE STATE 62 - 5-10 (0-3 MW)

##	Player	S	Total			Rebounds			PF	TP	A	TO	Blk	Stl	Min
			FG-FGA	3PT	FG-FGA	FT-FTA	Off Reb	Def Reb							
00	HILLSMAN,JAYCEE	g	0-4	0-2	0-0	0	0	0	3	0	1	2	0	0	22
14	ROGERS,FRANK	f	1-6	1-2	0-0	0	5	5	5	3	0	2	2	0	30
20	THORNTON,ISAAC	g	0-2	0-1	2-2	1	3	4	3	2	2	0	0	1	16
32	WELAGE,RYAN	f	9-18	3-9	2-2	4	4	8	2	23	1	0	0	0	39
33	SCHWARTZ,CODY	f	0-3	0-3	0-0	2	1	3	4	0	1	0	0	1	23
02	WILLIAMS,JR, GARY		2-5	0-3	3-4	1	2	3	2	7	0	1	0	0	14
10	BASOR,IVO		0-0	0-0	0-0	0	0	0	1	0	0	0	0	0	1
15	CLARKE,BRANDON		1-2	0-0	0-0	2	0	2	1	2	0	0	0	0	16
23	ONWAS,PRINCETON		8-16	3-6	4-6	0	4	4	1	23	1	1	0	1	33
25	BAHNER,LEON		0-1	0-0	2-2	0	0	0	1	2	0	0	0	0	6
TEAM						1	1	2	0		3				
TOTALS			21-57	7-26	13-16	11	20	31	23	62	6	9	2	3	200

Deadball Rebounds: 3,2

FG %	1st Half:	13-32	40.6%	2nd Half:	8-25	32.0%	Game:	21-57	36.8%
3FG %	1st Half:	5-15	33.3%	2nd Half:	2-11	18.2%	Game:	7-26	26.9%
FT %	1st Half:	4-4	100.0%	2nd Half:	9-12	75.0%	Game:	13-16	81.3%

### SAN DIEGO STATE 77 - 10-6 (3-0 MW)

##	Player	S	Total			Rebounds			PF	TP	A	TO	Blk	Stl	Min
			FG-FGA	3PT	FG-FGA	FT-FTA	Off Reb	Def Reb							
00	SPENCER,SKYLAR	f	0-1	0-0	0-0	3	5	8	4	0	0	2	1	1	24
12	KELL,TREY	g	4-11	1-4	1-1	0	4	4	2	10	2	2	1	0	32
13	SHEPARD,WINSTON	f	5-11	1-4	6-8	0	5	5	0	17	6	1	0	2	29
14	CHEATHAM,ZYLAN	f	5-7	0-0	7-9	1	2	3	2	17	2	0	0	0	25
42	HEMSLEY,JEREMY	g	7-9	4-6	2-4	1	3	4	1	20	2	1	1	0	35
03	CHOL,ANGELO		1-1	0-0	1-2	0	2	2	1	3	0	0	0	0	12
04	ALLEN,DAKARAI		0-3	0-2	0-1	1	0	1	2	0	0	1	1	1	12
11	WILLIAMS,D'ERRYL		0-0	0-0	0-0	0	0	0	0	0	0	0	0	0	1
15	PEREZ,BEN		1-5	1-5	0-0	0	0	0	1	3	0	0	0	1	13
21	POPE,MALIK		2-4	1-1	2-6	2	2	4	2	7	0	1	1	0	17
TEAM						3	2	5	0		0				
TOTALS			25-52	8-22	19-31	11	25	36	15	77	12	8	5	5	200

Deadball Rebounds: 6,0

FG %	1st Half:	11-25	44.0%	2nd Half:	14-27	51.9%	Game:	25-52	48.1%
3FG %	1st Half:	6-11	54.5%	2nd Half:	2-11	18.2%	Game:	8-22	36.4%
FT %	1st Half:	9-14	64.3%	2nd Half:	10-17	58.8%	Game:	19-31	61.3%

Officials: Kelly Self, Bill Vinovich, Keith Kimble

Technical Fouls: SAN JOSE STATE- None. SAN DIEGO STATE- None.

Attendance: 12414

Score by periods	1st	2nd	Total
SAN JOSE STATE	35	27	62
SAN DIEGO STATE	37	40	77

Points	In Paint	Off T/O	2nd Chance	Fast Break	Bench
SJ	18	8	15	2	34
SDSU	32	14	15	6	13

Last FG - SJ 2nd-00:14, SDSU 2nd-00:29.

Largest lead - SAN JOSE STATE by 1 2nd-18:20; SAN DIEGO STATE by 17 2nd-08:51

SJ led for 0:22. SDSU led for 39:01. Game was tied for 0:37.

Score tied - 1 times  
Lead changed - 2 times

# Official Basketball Box Score -- Game Totals -- First Half Statistics

## SAN JOSE STATE vs SAN DIEGO STATE

1/6/2016 7:01 pm PST at Steve Fisher Court at Viejas Arena

### SAN JOSE STATE 35 • 5-10 (0-3 MW)

##	Player	S	Total			Rebounds			PF	TP	A	TO	Blk	Stl	Min
			FG-FGA	3PT	FG-FGA	FT-FTA	Off Reb	Def Reb							
00	HILLSMAN,JAYCEE	g	0-4	0-2	0-0	0	0	0	0	0	1	1	0	0	13
14	ROGERS,FRANK	f	1-4	1-1	0-0	0	3	3	2	3	0	1	1	0	14
20	THORNTON,ISAAC	g	0-1	0-0	2-2	1	2	3	1	2	1	0	0	0	7
32	WELAGE,RYAN	f	5-8	1-4	0-0	3	2	5	1	11	1	0	0	0	19
33	SCHWARTZ,CODY	f	0-2	0-2	0-0	2	0	2	2	0	0	0	0	0	12
02	WILLIAMS,JR, GARY		0-2	0-2	0-0	0	0	0	2	0	0	0	0	0	3
10	BASOR,IVO		0-0	0-0	0-0	0	0	0	1	0	0	0	0	0	1
15	CLARKE,BRANDON		0-0	0-0	0-0	0	0	0	0	0	0	0	0	0	8
23	ONWAS,PRINCETON		7-10	3-4	0-0	0	2	2	0	17	1	0	0	1	17
25	BAHNER,LEON		0-1	0-0	2-2	0	0	0	1	2	0	0	0	0	6
TEAM						0	1	1	0		1				
Totals			13-32	5-15	4-4	6	10	16	10	35	4	3	1	1	100

FG % Half: 13-32 40.6%  
 3FG % Half: 5-15 33.3%  
 FT % Half: 4-4 100.0%

### SAN DIEGO STATE 37 • 10-6 (3-0 MW)

##	Player	S	Total			Rebounds			PF	TP	A	TO	Blk	Stl	Min
			FG-FGA	3PT	FG-FGA	FT-FTA	Off Reb	Def Reb							
00	SPENCER,SKYLAR	f	0-0	0-0	0-0	1	0	1	2	0	0	1	0	0	10
12	KELL,TREY	g	1-4	1-1	0-0	0	4	4	1	3	0	2	1	0	16
13	SHEPARD,WINSTON	f	2-6	1-3	2-2	0	4	4	0	7	4	1	0	1	13
14	CHEATHAM,ZYLAN	f	2-3	0-0	3-4	0	0	0	1	7	2	0	0	0	13
42	HEMSLEY,JEREMY	g	4-4	3-3	2-3	0	2	2	0	13	1	0	1	0	17
03	CHOL,ANGELO		0-0	0-0	0-0	0	1	1	1	0	0	0	0	0	8
04	ALLEN,DAKARAI		0-2	0-1	0-1	1	0	1	1	0	0	0	0	0	7
11	WILLIAMS,D'ERRYL		0-0	0-0	0-0	0	0	0	0	0	0	0	0	0	0
15	PEREZ,BEN		0-2	0-2	0-0	0	0	0	0	0	0	0	0	0	7
21	POPE,MALIK		2-4	1-1	2-4	1	1	2	1	7	0	0	0	0	9
TEAM						2	1	3	0		0				
Totals			11-25	6-11	9-14	5	13	18	7	37	7	4	2	1	100

FG % Half: 11-25 44.0%  
 3FG % Half: 6-11 54.5%  
 FT % Half: 9-14 64.3%

Officials: Kelly Self, Bill Vinovich, Keith Kimble  
 Technical Fouls: SAN JOSE STATE- None. SAN DIEGO STATE- None.

Score by periods	1st	2nd	Total
SAN JOSE STATE	35	27	62
SAN DIEGO STATE	37	40	77

Points	In Paint	Off T/O	2nd Chance	Fast Break	Bench
SJ	8	7	9	0	19
SDSU	10	2	5	6	7

Last FG - SJ 1st-00:04, SDSU 1st-00:28.  
 SJ led for 0:00. SDSU led for 19:44. Game was tied for 0:16.

Score tied - 0 times  
 Lead changed - 0 times

**SAN JOSE STATE vs SAN DIEGO STATE**  
**1/6/2016; 7:01 pm PST at Steve Fisher Court at Viejas Arena**  
**Period 1 Play-By-Play**

VISITORS: SAN JOSE STATE	Time	Score	Margin	HOME: SAN DIEGO STATE
	19:44	3-0	H 3	GOOD! 3PTR by HEMSLEY,JEREMY
MISSED 3PTR by HILLSMAN,JAYCEE	19:12			
	19:12			REBOUND (DEF) by SHEPARD,WINSTON
FOUL by THORNTON,ISAAC	18:58			
	18:58			MISSED FT by HEMSLEY,JEREMY
	18:58			REBOUND (DEADB) by TEAM
	18:58	4-0	H 4	GOOD! FT by HEMSLEY,JEREMY
	18:58	5-0	H 5	GOOD! FT by HEMSLEY,JEREMY
MISSED 3PTR by SCHWARTZ,CODY	18:54			
	18:54			REBOUND (DEF) by TEAM
	18:31			MISSED JUMPER by SHEPARD,WINSTON
	18:31			REBOUND (OFF) by TEAM
	18:24			MISSED LAYUP by SHEPARD,WINSTON
BLOCK by ROGERS,FRANK	18:24			
REBOUND (DEF) by THORNTON,ISAAC	18:23			
MISSED JUMPER by THORNTON,ISAAC	18:08			
	18:08			BLOCK by KELL,TREY
REBOUND (OFF) by THORNTON,ISAAC	18:06			
GOOD! 3PTR by WELAGE,RYAN	18:04	5-3	H 2	
ASSIST by THORNTON,ISAAC	18:04			
	17:48	8-3	H 5	GOOD! 3PTR by HEMSLEY,JEREMY
	17:48			ASSIST by SHEPARD,WINSTON
SUB IN: ONWAS,PRINCETON	17:35			
GOOD! JUMPER by ONWAS,PRINCETON [PNT]	17:33	8-5	H 3	
	17:09			MISSED 3PTR by SHEPARD,WINSTON
REBOUND (DEF) by ONWAS,PRINCETON	17:09			
MISSED LAYUP by HILLSMAN,JAYCEE	17:01			
	17:01			REBOUND (DEF) by SHEPARD,WINSTON
	16:56			MISSED JUMPER by KELL,TREY
REBOUND (DEF) by TEAM	16:56			
TURNOVER by ROGERS,FRANK	16:25			
	16:25			STEAL by SHEPARD,WINSTON
	16:22	10-5	H 5	GOOD! DUNK by CHEATHAM,ZYLAN [FB/PNT]
	16:22			ASSIST by SHEPARD,WINSTON
GOOD! JUMPER by ONWAS,PRINCETON [PNT]	16:11	10-7	H 3	
	15:50			MISSED 3PTR by SHEPARD,WINSTON
	15:50			REBOUND (OFF) by SPENCER,SKYLAR
	15:36	13-7	H 6	GOOD! 3PTR by KELL,TREY
	15:36			ASSIST by CHEATHAM,ZYLAN
GOOD! 3PTR by ONWAS,PRINCETON	15:19	13-10	H 3	
ASSIST by HILLSMAN,JAYCEE	15:18			
	14:51	16-10	H 6	GOOD! 3PTR by SHEPARD,WINSTON
	14:51			ASSIST by HEMSLEY,JEREMY
MISSED JUMPER by ROGERS,FRANK	14:34			
	14:34			REBOUND (DEF) by KELL,TREY
	14:26			MISSED JUMPER by KELL,TREY
REBOUND (DEF) by ROGERS,FRANK	14:26			
MISSED JUMPER by ONWAS,PRINCETON	14:19			
	14:19			BLOCK by HEMSLEY,JEREMY
REBOUND (OFF) by WELAGE,RYAN	14:17			
GOOD! JUMPER by WELAGE,RYAN	14:14	16-12	H 4	
	13:56			TURNOVER by KELL,TREY
	13:49			FOUL by SPENCER,SKYLAR

VISITORS: SAN JOSE STATE	Time	Score	Margin	HOME: SAN DIEGO STATE
TIMEOUT media	13:49			
SUB IN: BAHNER,LEON	13:49			
SUB IN: WILLIAMS,JR, GARY	13:49			
SUB OUT: HILLSMAN,JAYCEE	13:49			
SUB OUT: SCHWARTZ,CODY	13:49			
	13:49			SUB IN: PEREZ,BEN
	13:49			SUB IN: ALLEN,DAKARAI
	13:49			SUB IN: POPE,MALIK
	13:49			SUB IN: CHOL,ANGELO
	13:49			SUB OUT: SPENCER,SKYLAR
	13:49			SUB OUT: KELL,TREY
	13:49			SUB OUT: SHEPARD,WINSTON
	13:49			SUB OUT: CHEATHAM,ZYLAN
GOOD! JUMPER by WELAGE,RYAN	13:45	16-14	H 2	
ASSIST by ONWAS,PRINCETON	13:45			
SUB IN: CLARKE,BRANDON	13:33			
SUB OUT: BAHNER,LEON	13:33			
FOUL by WILLIAMS,JR, GARY	13:14			
SUB IN: BAHNER,LEON	13:14			
SUB OUT: ROGERS,FRANK	13:14			
	13:07			MISSED JUMPER by ALLEN,DAKARAI
	13:07			REBOUND (OFF) by POPE,MALIK
	13:04	18-14	H 4	GOOD! DUNK by POPE,MALIK [PNT]
MISSED 3PTR by WILLIAMS,JR, GARY	12:49			
	12:49			REBOUND (DEF) by HEMSLEY,JEREMY
FOUL by WILLIAMS,JR, GARY	12:42			
	12:42	19-14	H 5	GOOD! FT by POPE,MALIK
	12:42	20-14	H 6	GOOD! FT by POPE,MALIK
MISSED 3PTR by WELAGE,RYAN	12:25			
	12:25			REBOUND (DEF) by CHOL,ANGELO
	12:13			MISSED 3PTR by PEREZ,BEN
REBOUND (DEF) by WELAGE,RYAN	12:13			
	11:45			FOUL by ALLEN,DAKARAI
TIMEOUT MEDIA	11:45			
GOOD! FT by BAHNER,LEON	11:45	20-15	H 5	
GOOD! FT by BAHNER,LEON	11:45	20-16	H 4	
SUB IN: ROGERS,FRANK	11:45			
SUB OUT: WELAGE,RYAN	11:45			
	11:45			SUB IN: KELL,TREY
	11:45			SUB OUT: HEMSLEY,JEREMY
	11:25			MISSED JUMPER by POPE,MALIK
REBOUND (DEF) by ONWAS,PRINCETON	11:25			
MISSED 3PTR by WILLIAMS,JR, GARY	11:09			
	11:09			REBOUND (DEF) by KELL,TREY
	10:40			MISSED JUMPER by POPE,MALIK
	10:40			REBOUND (OFF) by TEAM
SUB IN: WELAGE,RYAN	10:39			
SUB IN: SCHWARTZ,CODY	10:39			
SUB IN: HILLSMAN,JAYCEE	10:39			
SUB OUT: BAHNER,LEON	10:39			
SUB OUT: CLARKE,BRANDON	10:39			
SUB OUT: ONWAS,PRINCETON	10:39			
SUB OUT: WILLIAMS,JR, GARY	10:39			
	10:29			MISSED JUMPER by KELL,TREY
REBOUND (DEF) by THORNTON,ISAAC	10:29			
MISSED JUMPER by ROGERS,FRANK	10:18			
	10:18			REBOUND (DEF) by KELL,TREY
FOUL by SCHWARTZ,CODY	10:10			

VISITORS: SAN JOSE STATE	Time	Score	Margin	HOME: SAN DIEGO STATE
	10:07	23-16	H 7	GOOD! 3PTR by POPE,MALIK
	09:47			FOUL by POPE,MALIK
MISSED JUMPER by ROGERS,FRANK	09:45			
	09:45			REBOUND (DEF) by POPE,MALIK
FOUL by ROGERS,FRANK	09:42			
SUB IN: ONWAS,PRINCETON	09:42			
SUB OUT: THORNTON,ISAAC	09:42			
FOUL by ROGERS,FRANK	09:20			
	09:20			MISSED FT by POPE,MALIK
	09:20			REBOUND (DEADB) by TEAM
	09:20			MISSED FT by POPE,MALIK
REBOUND (DEF) by ROGERS,FRANK	09:20			
MISSED JUMPER by HILLSMAN,JAYCEE	09:05			
REBOUND (OFF) by SCHWARTZ,CODY	09:05			
TURNOVER by HILLSMAN,JAYCEE	08:39			
	08:39			SUB IN: CHEATHAM,ZYLAN
	08:39			SUB IN: SHEPARD,WINSTON
	08:39			SUB IN: HEMSLEY,JEREMY
	08:39			SUB IN: SPENCER,SKYLAR
	08:39			SUB OUT: PEREZ,BEN
	08:39			SUB OUT: ALLEN,DAKARAI
	08:39			SUB OUT: POPE,MALIK
	08:39			SUB OUT: CHOL,ANGELO
	08:30			FOUL by SPENCER,SKYLAR
	08:30			TURNOVER by SPENCER,SKYLAR
GOOD! 3PTR by ONWAS,PRINCETON	08:06	23-19	H 4	
	07:41	25-19	H 6	GOOD! DUNK by SHEPARD,WINSTON [PNT]
	07:41			ASSIST by CHEATHAM,ZYLAN
TURNOVER by TEAM	07:06			
	07:06			TIMEOUT media
SUB IN: BAHNER,LEON	07:06			
SUB OUT: ROGERS,FRANK	07:06			
	06:57			TURNOVER by SHEPARD,WINSTON
STEAL by ONWAS,PRINCETON	06:56			
MISSED 3PTR by WELAGE,RYAN	06:51			
REBOUND (OFF) by SCHWARTZ,CODY	06:51			
MISSED 3PTR by WELAGE,RYAN	06:28			
	06:28			REBOUND (DEF) by SHEPARD,WINSTON
	05:56			MISSED JUMPER by CHEATHAM,ZYLAN
REBOUND (DEF) by WELAGE,RYAN	05:56			
MISSED 3PTR by SCHWARTZ,CODY	05:31			
REBOUND (OFF) by WELAGE,RYAN	05:31			
GOOD! JUMPER by WELAGE,RYAN	05:26	25-21	H 4	
FOUL by BAHNER,LEON	05:08			
	05:08			MISSED FT by CHEATHAM,ZYLAN
	05:08			REBOUND (DEADB) by TEAM
	05:08	26-21	H 5	GOOD! FT by CHEATHAM,ZYLAN
MISSED 3PTR by ONWAS,PRINCETON	04:45			
	04:45			REBOUND (DEF) by SHEPARD,WINSTON
FOUL by SCHWARTZ,CODY	04:42			
	04:42	27-21	H 6	GOOD! FT by SHEPARD,WINSTON
	04:42	28-21	H 7	GOOD! FT by SHEPARD,WINSTON
SUB IN: CLARKE,BRANDON	04:42			
SUB OUT: SCHWARTZ,CODY	04:42			
	04:42			SUB IN: CHOL,ANGELO
	04:42			SUB OUT: SPENCER,SKYLAR
MISSED 3PTR by HILLSMAN,JAYCEE	04:16			
	04:16			REBOUND (DEF) by HEMSLEY,JEREMY

VISITORS: SAN JOSE STATE	Time	Score	Margin	HOME: SAN DIEGO STATE
	04:08	30-21	H 9	GOOD! LAYUP by HEMSLEY,JEREMY [FB/PNT]
MISSED JUMPER by BAHNER,LEON	03:43			
	03:43			REBOUND (DEF) by KELL,TREY
	03:36	32-21	H 11	GOOD! DUNK by CHEATHAM,ZYLAN [FB/PNT]
	03:36			ASSIST by SHEPARD,WINSTON
TIMEOUT 30SEC	03:33			
TIMEOUT MEDIA	03:33			
SUB IN: ROGERS,FRANK	03:33			
SUB IN: THORNTON,ISAAC	03:33			
SUB OUT: BAHNER,LEON	03:33			
SUB OUT: HILLSMAN,JAYCEE	03:33			
	03:33			SUB IN: PEREZ,BEN
	03:33			SUB IN: ALLEN,DAKARAI
	03:33			SUB IN: POPE,MALIK
	03:33			SUB OUT: CHEATHAM,ZYLAN
	03:33			SUB OUT: KELL,TREY
	03:33			SUB OUT: SHEPARD,WINSTON
GOOD! LAYUP by ONWAS,PRINCETON [PNT]	03:16	32-23	H 9	
SUB IN: BASOR,IVO	03:15			
SUB OUT: ROGERS,FRANK	03:15			
	03:00			MISSED 3PTR by PEREZ,BEN
	03:00			REBOUND (OFF) by ALLEN,DAKARAI
FOUL by WELAGE,RYAN	02:57			
	02:57			MISSED FT by ALLEN,DAKARAI
REBOUND (DEADB) by TEAM	02:57			
SUB IN: ROGERS,FRANK	02:57			
SUB OUT: BASOR,IVO	02:57			
	02:56			FOUL by CHOL,ANGELO
GOOD! JUMPER by ONWAS,PRINCETON [PNT]	02:35	32-25	H 7	
	02:13			MISSED 3PTR by ALLEN,DAKARAI
REBOUND (DEF) by ROGERS,FRANK	02:13			
GOOD! 3PTR by ROGERS,FRANK	02:02	32-28	H 4	
ASSIST by WELAGE,RYAN	02:02			
	01:54			TIMEOUT 30SEC
SUB IN: BASOR,IVO	01:54			
SUB OUT: ROGERS,FRANK	01:54			
	01:54			SUB IN: KELL,TREY
	01:54			SUB IN: SHEPARD,WINSTON
	01:54			SUB IN: CHEATHAM,ZYLAN
	01:54			SUB OUT: PEREZ,BEN
	01:54			SUB OUT: ALLEN,DAKARAI
	01:54			SUB OUT: CHOL,ANGELO
	01:38			FOUL by KELL,TREY
	01:38			TURNOVER by KELL,TREY
SUB IN: ROGERS,FRANK	01:38			
SUB OUT: BASOR,IVO	01:38			
	01:27			FOUL by CHEATHAM,ZYLAN
GOOD! FT by THORNTON,ISAAC	01:27	32-29	H 3	
GOOD! FT by THORNTON,ISAAC	01:27	32-30	H 2	
SUB IN: BASOR,IVO	01:27			
SUB IN: HILLSMAN,JAYCEE	01:27			
SUB OUT: WELAGE,RYAN	01:27			
SUB OUT: ROGERS,FRANK	01:27			
FOUL by BASOR,IVO	01:13			
	01:13	33-30	H 3	GOOD! FT by CHEATHAM,ZYLAN
	01:13	34-30	H 4	GOOD! FT by CHEATHAM,ZYLAN
SUB IN: WELAGE,RYAN	01:13			
SUB IN: ROGERS,FRANK	01:13			

VISITORS: SAN JOSE STATE	Time	Score	Margin	HOME: SAN DIEGO STATE
SUB OUT: BASOR,IVO	01:13			
SUB OUT: HILLSMAN,JAYCEE	01:13			
MISSED JUMPER by ONWAS,PRINCETON	00:52			
REBOUND (OFF) by WELAGE,RYAN	00:52			
GOOD! JUMPER by WELAGE,RYAN	00:47	34-32	H 2	
	00:28	37-32	H 5	GOOD! 3PTR by HEMSLEY,JEREMY
	00:28			ASSIST by SHEPARD,WINSTON
GOOD! 3PTR by ONWAS,PRINCETON	00:04	37-35	H 2	

SAN JOSE STATE 35, SAN DIEGO STATE 37

Period 1-only	In Paint	Off T/O	2nd Chance	Fast Break	Bench	
SJ	8	7	9	0	19	Score tied - 0 times
SDSU	10	2	5	6	7	Lead changed - 0 times



**Official Basketball Box Score -- Game Totals -- Second Half Statistics**  
**SAN JOSE STATE vs SAN DIEGO STATE**  
 1/6/2016 7:01 pm PST at Steve Fisher Court at Viejas Arena

**SAN JOSE STATE 27 • 5-10 (0-3 MW)**

##	Player	S	Total			Rebounds			PF	TP	A TO	Blk	Stl	Min	
			FG-FGA	3PT FG-FGA	FT-FTA	Off Reb	Def Reb	Tot Reb							
00	HILLSMAN,JAYCEE	g	0-0	0-0	0-0	0	0	0	3	0	0	1	0	0	9
14	ROGERS,FRANK	f	0-2	0-1	0-0	0	2	2	3	0	0	1	1	0	16
20	THORNTON,ISAAC	g	0-1	0-1	0-0	0	1	1	2	0	1	0	0	1	9
32	WELAGE,RYAN	f	4-10	2-5	2-2	1	2	3	1	12	0	0	0	0	20
33	SCHWARTZ,CODY	f	0-1	0-1	0-0	0	1	1	2	0	1	0	0	1	11
02	WILLIAMS,JR, GARY		2-3	0-1	3-4	1	2	3	0	7	0	1	0	0	11
10	BASOR,IVO		0-0	0-0	0-0	0	0	0	0	0	0	0	0	0	0
15	CLARKE,BRANDON		1-2	0-0	0-0	2	0	2	1	2	0	0	0	0	8
23	ONWAS,PRINCETON		1-6	0-2	4-6	0	2	2	1	6	0	1	0	0	16
25	BAHNER,LEON		0-0	0-0	0-0	0	0	0	0	0	0	0	0	0	0
TEAM						1	0	1	0			2			
Totals			8-25	2-11	9-12	5	10	15	13	27	2	6	1	2	100

FG % Half: 8-25 32.0%  
 3FG % Half: 2-11 33.3%  
 FT % Half: 9-12 75.0%

**SAN DIEGO STATE 40 • 10-6 (3-0 MW)**

##	Player	S	Total			Rebounds			PF	TP	A TO	Blk	Stl	Min	
			FG-FGA	3PT FG-FGA	FT-FTA	Off Reb	Def Reb	Tot Reb							
00	SPENCER,SKYLAR	f	0-1	0-0	0-0	2	5	7	2	0	0	1	1	1	14
12	KELL,TREY	g	3-7	0-3	1-1	0	0	0	1	7	2	0	0	0	16
13	SHEPARD,WINSTON	f	3-5	0-1	4-6	0	1	1	0	10	2	0	0	1	16
14	CHEATHAM,ZYLAN	f	3-4	0-0	4-5	1	2	3	1	10	0	0	0	0	12
42	HEMSLEY,JEREMY	g	3-5	1-3	0-1	1	1	2	1	7	1	1	0	0	18
03	CHOL,ANGELO		1-1	0-0	1-2	0	1	1	0	3	0	0	0	0	4
04	ALLEN,DAKARAI		0-1	0-1	0-0	0	0	0	1	0	0	1	1	1	5
11	WILLIAMS,D'ERRYL		0-0	0-0	0-0	0	0	0	0	0	0	0	0	0	1
15	PEREZ,BEN		1-3	1-3	0-0	0	0	0	1	3	0	0	0	1	6
21	POPE,MALIK		0-0	0-0	0-2	1	1	2	1	0	0	1	1	0	8
TEAM						1	1	2	0			0			
Totals			14-27	2-11	10-17	6	12	18	8	40	5	4	3	4	100

FG % Half: 14-27 51.9%  
 3FG % Half: 2-11 54.5%  
 FT % Half: 10-17 58.8%

Officials: Kelly Self, Bill Vinovich, Keith Kimble  
 Technical Fouls: SAN JOSE STATE- None. SAN DIEGO STATE- None.

Score by periods	1st	2nd	Total
SAN JOSE STATE	35	27	62
SAN DIEGO STATE	37	40	77

Points	In Paint	Off T/O	2nd Chance	Fast Break	Bench
SJ	10	1	6	2	15
SDSU	22	12	6	0	6

Last FG - SJ 2nd-00:14, SDSU 2nd-00:29.  
 SJ led for 0:22. SDSU led for 19:17. Game was tied for 0:21.

Score tied - 1 times  
 Lead changed - 2 times

**SAN JOSE STATE vs SAN DIEGO STATE**  
**1/6/2016; 7:01 pm PST at Steve Fisher Court at Viejas Arena**  
**Period 2 Play-By-Play**

VISITORS: SAN JOSE STATE	Time	Score	Margin	HOME: SAN DIEGO STATE
MISSED 3PTR by THORNTON,ISAAC	19:42			
REBOUND (OFF) by WELAGE,RYAN	19:42			
GOOD! LAYUP by WELAGE,RYAN [PNT]	19:37	37-37	T	
	19:16	39-37	H 2	GOOD! LAYUP by CHEATHAM,ZYLAN [PNT]
MISSED JUMPER by ROGERS,FRANK	18:54			
	18:54			REBOUND (DEF) by CHEATHAM,ZYLAN
	18:27			MISSED 3PTR by KELL,TREY
REBOUND (DEF) by ROGERS,FRANK	18:27			
GOOD! 3PTR by WELAGE,RYAN	18:20	39-40	V 1	
ASSIST by THORNTON,ISAAC	18:20			
	17:58	41-40	H 1	GOOD! JUMPER by HEMSLEY,JEREMY
TURNOVER by HILLSMAN,JAYCEE	17:29			
	17:16			MISSED 3PTR by SHEPARD,WINSTON
REBOUND (DEF) by SCHWARTZ,CODY	17:16			
MISSED JUMPER by WELAGE,RYAN	16:57			
	16:57			REBOUND (DEF) by CHEATHAM,ZYLAN
	16:44	44-40	H 4	GOOD! 3PTR by HEMSLEY,JEREMY
	16:44			ASSIST by SHEPARD,WINSTON
TURNOVER by ROGERS,FRANK	16:31			
SUB IN: ONWAS,PRINCETON	16:31			
SUB OUT: THORNTON,ISAAC	16:31			
	16:12	46-40	H 6	GOOD! DUNK by SHEPARD,WINSTON [PNT]
	16:12			ASSIST by KELL,TREY
FOUL by ROGERS,FRANK	16:12			
TIMEOUT 30SEC	16:12			
	16:12	47-40	H 7	GOOD! FT by SHEPARD,WINSTON
SUB IN: WILLIAMS,JR, GARY	16:12			
SUB OUT: HILLSMAN,JAYCEE	16:12			
	16:12			SUB IN: ALLEN,DAKARAI
	16:12			SUB OUT: SHEPARD,WINSTON
MISSED JUMPER by ONWAS,PRINCETON	15:44			
	15:44			BLOCK by SPENCER,SKYLAR
REBOUND (OFF) by TEAM	15:44			
TIMEOUT MEDIA	15:44			
TURNOVER by TEAM	15:41			
	15:41			STEAL by SPENCER,SKYLAR
	15:21			MISSED 3PTR by ALLEN,DAKARAI
	15:21			REBOUND (OFF) by SPENCER,SKYLAR
	15:15			MISSED JUMPER by SPENCER,SKYLAR
SUB IN: CLARKE,BRANDON	15:15			
SUB OUT: SCHWARTZ,CODY	15:15			
BLOCK by ROGERS,FRANK	15:14			
	15:13			REBOUND (OFF) by TEAM
	15:09	49-40	H 9	GOOD! JUMPER by KELL,TREY [PNT]
MISSED 3PTR by WELAGE,RYAN	14:49			
REBOUND (OFF) by CLARKE,BRANDON	14:49			
MISSED JUMPER by CLARKE,BRANDON	14:43			
	14:43			BLOCK by ALLEN,DAKARAI
	14:42			REBOUND (DEF) by SPENCER,SKYLAR
	14:34	51-40	H 11	GOOD! LAYUP by KELL,TREY [PNT]
GOOD! JUMPER by WILLIAMS,JR, GARY [PNT]	14:16	51-42	H 9	
	13:55			MISSED JUMPER by CHEATHAM,ZYLAN
	13:55			REBOUND (OFF) by HEMSLEY,JEREMY

VISITORS: SAN JOSE STATE	Time	Score	Margin	HOME: SAN DIEGO STATE
	13:46			TURNOVER by SPENCER,SKYLAR
	13:30			FOUL by ALLEN,DAKARAI
MISSED FT by ONWAS,PRINCETON	13:30			
REBOUND (DEADB) by TEAM	13:30			
GOOD! FT by ONWAS,PRINCETON	13:30	51-43	H 8	
	13:30			SUB IN: POPE,MALIK
	13:30			SUB IN: CHOL,ANGELO
	13:30			SUB IN: PEREZ,BEN
	13:30			SUB OUT: SPENCER,SKYLAR
	13:30			SUB OUT: CHEATHAM,ZYLAN
	13:30			SUB OUT: HEMSLEY,JEREMY
	13:12			TURNOVER by ALLEN,DAKARAI
SUB IN: THORNTON,ISAAC	13:12			
SUB OUT: WILLIAMS,JR, GARY	13:12			
	13:12			SUB IN: SHEPARD,WINSTON
	13:12			SUB OUT: ALLEN,DAKARAI
MISSED 3PTR by ROGERS,FRANK	12:58			
	12:58			REBOUND (DEF) by CHOL,ANGELO
	12:54	53-43	H 10	GOOD! JUMPER by SHEPARD,WINSTON [PNT]
TURNOVER by TEAM	12:25			
SUB IN: SCHWARTZ,CODY	12:25			
SUB IN: HILLSMAN,JAYCEE	12:25			
SUB OUT: ROGERS,FRANK	12:25			
SUB OUT: CLARKE,BRANDON	12:25			
	12:24			STEAL by PEREZ,BEN
FOUL by THORNTON,ISAAC	12:14			
	12:10	56-43	H 13	GOOD! 3PTR by PEREZ,BEN
	12:10			ASSIST by KELL,TREY
GOOD! 3PTR by WELAGE,RYAN	11:47	56-46	H 10	
ASSIST by SCHWARTZ,CODY	11:47			
FOUL by SCHWARTZ,CODY	11:28			
	11:28	57-46	H 11	GOOD! FT by CHOL,ANGELO
	11:28			MISSED FT by CHOL,ANGELO
REBOUND (DEF) by WELAGE,RYAN	11:28			
SUB IN: WILLIAMS,JR, GARY	11:28			
SUB OUT: THORNTON,ISAAC	11:28			
	11:10			FOUL by KELL,TREY
GOOD! FT by ONWAS,PRINCETON	11:10	57-47	H 10	
GOOD! FT by ONWAS,PRINCETON	11:10	57-48	H 9	
	11:10			SUB IN: HEMSLEY,JEREMY
	11:10			SUB OUT: CHOL,ANGELO
	10:49	59-48	H 11	GOOD! JUMPER by KELL,TREY [PNT]
FOUL by HILLSMAN,JAYCEE	10:49			
	10:49	60-48	H 12	GOOD! FT by KELL,TREY
TURNOVER by ONWAS,PRINCETON	10:24			
	10:24			STEAL by SHEPARD,WINSTON
FOUL by ONWAS,PRINCETON	10:24			
FOUL by HILLSMAN,JAYCEE	10:10			
	10:10	61-48	H 13	GOOD! FT by SHEPARD,WINSTON
	10:10	62-48	H 14	GOOD! FT by SHEPARD,WINSTON
SUB IN: ROGERS,FRANK	10:10			
SUB OUT: HILLSMAN,JAYCEE	10:10			
	10:10			SUB IN: SPENCER,SKYLAR
	10:10			SUB OUT: KELL,TREY
MISSED 3PTR by SCHWARTZ,CODY	09:46			
	09:46			REBOUND (DEF) by SHEPARD,WINSTON
	09:33			MISSED 3PTR by HEMSLEY,JEREMY
REBOUND (DEF) by WILLIAMS,JR, GARY	09:33			

VISITORS: SAN JOSE STATE	Time	Score	Margin	HOME: SAN DIEGO STATE
MISSED 3PTR by WILLIAMS,JR, GARY	09:26			
	09:26			REBOUND (DEF) by SPENCER,SKYLAR
	09:14			TURNOVER by POPE,MALIK
STEAL by SCHWARTZ,CODY	09:13			
MISSED 3PTR by WELAGE,RYAN	09:09			
	09:09			REBOUND (DEF) by POPE,MALIK
	08:55			MISSED 3PTR by PEREZ,BEN
	08:55			REBOUND (OFF) by SPENCER,SKYLAR
	08:51	64-48	H 16	GOOD! LAYUP by SHEPARD,WINSTON [PNT]
FOUL by SCHWARTZ,CODY	08:51			
TIMEOUT 30SEC	08:51			
	08:51	65-48	H 17	GOOD! FT by SHEPARD,WINSTON
	08:50			FOUL by PEREZ,BEN
SUB IN: CLARKE,BRANDON	08:48			
SUB OUT: SCHWARTZ,CODY	08:48			
	08:32			FOUL by HEMSLEY,JEREMY
GOOD! FT by WELAGE,RYAN	08:32	65-49	H 16	
GOOD! FT by WELAGE,RYAN	08:32	65-50	H 15	
SUB IN: THORNTON,ISAAC	08:32			
SUB OUT: WILLIAMS,JR, GARY	08:32			
	08:22			TURNOVER by HEMSLEY,JEREMY
STEAL by THORNTON,ISAAC	08:22			
MISSED JUMPER by WELAGE,RYAN	08:07			
	08:07			BLOCK by POPE,MALIK
	08:05			REBOUND (DEF) by SPENCER,SKYLAR
	08:01			MISSED 3PTR by PEREZ,BEN
REBOUND (DEF) by WELAGE,RYAN	08:01			
	07:33			FOUL by POPE,MALIK
TIMEOUT MEDIA	07:33			
MISSED FT by ONWAS,PRINCETON	07:33			
REBOUND (DEADB) by TEAM	07:33			
GOOD! FT by ONWAS,PRINCETON	07:33	65-51	H 14	
	07:33			SUB IN: CHEATHAM,ZYLAN
	07:33			SUB IN: KELL,TREY
	07:33			SUB OUT: POPE,MALIK
	07:33			SUB OUT: PEREZ,BEN
	07:07			MISSED 3PTR by KELL,TREY
REBOUND (DEF) by ONWAS,PRINCETON	07:07			
GOOD! JUMPER by ONWAS,PRINCETON [FB/PNT]	06:59	65-53	H 12	
	06:36			MISSED JUMPER by KELL,TREY
REBOUND (DEF) by THORNTON,ISAAC	06:36			
MISSED 3PTR by ONWAS,PRINCETON	06:22			
REBOUND (OFF) by CLARKE,BRANDON	06:22			
GOOD! JUMPER by CLARKE,BRANDON [PNT]	06:17	65-55	H 10	
	05:57	67-55	H 12	GOOD! DUNK by CHEATHAM,ZYLAN [PNT]
	05:57			ASSIST by SHEPARD,WINSTON
MISSED JUMPER by WELAGE,RYAN	05:23			
	05:23			REBOUND (DEF) by HEMSLEY,JEREMY
FOUL by THORNTON,ISAAC	05:20			
	05:20			MISSED FT by HEMSLEY,JEREMY
REBOUND (DEADB) by TEAM	05:20			
SUB IN: HILLSMAN,JAYCEE	05:20			
SUB IN: WILLIAMS,JR, GARY	05:20			
SUB OUT: CLARKE,BRANDON	05:20			
SUB OUT: THORNTON,ISAAC	05:20			
	05:19			FOUL by CHEATHAM,ZYLAN
	05:06			FOUL by SPENCER,SKYLAR
MISSED FT by WILLIAMS,JR, GARY	05:06			

VISITORS: SAN JOSE STATE	Time	Score	Margin	HOME: SAN DIEGO STATE
REBOUND (DEADB) by TEAM	05:06			
GOOD! FT by WILLIAMS,JR, GARY	05:06	67-56	H 11	
	04:43			MISSED JUMPER by SHEPARD,WINSTON
REBOUND (DEF) by WILLIAMS,JR, GARY	04:43			
MISSED 3PTR by ONWAS,PRINCETON	04:23			
	04:23			REBOUND (DEF) by SPENCER,SKYLAR
	04:00	69-56	H 13	GOOD! LAYUP by CHEATHAM,ZYLAN [PNT]
	04:00			ASSIST by HEMSLEY,JEREMY
FOUL by WELAGE,RYAN	04:00			
	04:00	70-56	H 14	GOOD! FT by CHEATHAM,ZYLAN
MISSED LAYUP by ONWAS,PRINCETON	03:49			
	03:49			REBOUND (DEF) by SPENCER,SKYLAR
	03:22			MISSED 3PTR by KELL,TREY
	03:22			REBOUND (DEADB) by TEAM
FOUL by HILLSMAN,JAYCEE	03:17			
	03:17			TIMEOUT media
	03:17	71-56	H 15	GOOD! FT by CHEATHAM,ZYLAN
	03:17	72-56	H 16	GOOD! FT by CHEATHAM,ZYLAN
SUB IN: THORNTON,ISAAC	03:17			
SUB OUT: ONWAS,PRINCETON	03:17			
	03:05			FOUL by SPENCER,SKYLAR
GOOD! FT by WILLIAMS,JR, GARY	03:05	72-57	H 15	
GOOD! FT by WILLIAMS,JR, GARY	03:05	72-58	H 14	
SUB IN: ONWAS,PRINCETON	03:05			
SUB OUT: THORNTON,ISAAC	03:05			
	02:39			MISSED 3PTR by HEMSLEY,JEREMY
	02:39			REBOUND (OFF) by CHEATHAM,ZYLAN
FOUL by ROGERS,FRANK	02:36			
	02:36	73-58	H 15	GOOD! FT by CHEATHAM,ZYLAN
	02:36			MISSED FT by CHEATHAM,ZYLAN
REBOUND (DEF) by ROGERS,FRANK	02:36			
SUB IN: SCHWARTZ,CODY	02:36			
SUB OUT: HILLSMAN,JAYCEE	02:36			
MISSED 3PTR by WELAGE,RYAN	02:22			
	02:22			REBOUND (DEF) by TEAM
	02:19			SUB IN: POPE,MALIK
	02:19			SUB OUT: CHEATHAM,ZYLAN
FOUL by ROGERS,FRANK	01:53			
	01:53			MISSED FT by SHEPARD,WINSTON
	01:53			REBOUND (DEADB) by TEAM
	01:53			MISSED FT by SHEPARD,WINSTON
	01:53			REBOUND (OFF) by POPE,MALIK
SUB IN: CLARKE,BRANDON	01:53			
SUB OUT: ROGERS,FRANK	01:53			
	01:53			SUB IN: ALLEN,DAKARAI
	01:53			SUB IN: CHOL,ANGELO
	01:53			SUB OUT: KELL,TREY
	01:53			SUB OUT: SPENCER,SKYLAR
FOUL by CLARKE,BRANDON	01:27			
	01:27			MISSED FT by POPE,MALIK
	01:27			REBOUND (DEADB) by TEAM
	01:27			MISSED FT by POPE,MALIK
REBOUND (DEF) by ONWAS,PRINCETON	01:27			
	01:27			SUB IN: WILLIAMS,D'ERRYL
	01:27			SUB OUT: SHEPARD,WINSTON
TURNOVER by WILLIAMS,JR, GARY	01:16			
	01:15			STEAL by ALLEN,DAKARAI
	01:02	75-58	H 17	GOOD! LAYUP by CHOL,ANGELO [PNT]

VISITORS: SAN JOSE STATE	Time	Score	Margin	HOME: SAN DIEGO STATE
MISSED JUMPER by ONWAS,PRINCETON	00:48			
REBOUND (OFF) by WILLIAMS,JR, GARY	00:48			
GOOD! LAYUP by WILLIAMS,JR, GARY [PNT]	00:43	75-60	H 15	
	00:29	77-60	H 17	GOOD! JUMPER by HEMSLEY,JEREMY [PNT]
GOOD! JUMPER by WELAGE,RYAN	00:14	77-62	H 15	
TIMEOUT 30SEC	00:12			

SAN JOSE STATE 62, SAN DIEGO STATE 77

Period 2-only	In Paint	Off T/O	2nd Chance	Fast Break	Bench	
SJ	10	1	6	2	15	Score tied - 2 times
SDSU	22	12	6	0	6	Lead changed - 2 times



09:45 - ROGERS JUMPER	X	16:23 7	3	POPE 3PTR - 10:07	09:26 - WILLIAMS 3PTR	X		TO	POPE TURN - 09:14
					09:09 - WELAGE 3PTR	X			
			X	POPE FT - 09:20			X		PEREZ 3PTR - 08:55
			X	POPE FT - 09:20			48-64 16	2 <sup>P</sup>	SHEPARD LAYUP - 08:51
09:05 - HILLSMAN JUMPER	X						48-65 17	1	SHEPARD FT - 08:51
08:39 - HILLSMAN TURN	TO				08:32 - WELAGE FT	1	49-65 16		
				TO SPENCER TURN - 08:30	08:32 - WELAGE FT	1	50-65 15		
08:06 - ONWAS 3PTR	3	19-23 4						TO	HEMSLEY TURN - 08:22
		19-25 6	2 <sup>P</sup>	SHEPARD DUNK - 07:41	08:07 - WELAGE JUMPER	X			
07:06 - TEAM TURN	TO							X	PEREZ 3PTR - 08:01
				TO SHEPARD TURN - 06:57	07:33 - ONWAS FT	X			
06:51 - WELAGE 3PTR	X				07:33 - ONWAS FT	1	51-65 14		
06:28 - WELAGE 3PTR	X							X	KELL 3PTR - 07:07
			X	CHEATHAM JUMPER - 05:56	06:59 - ONWAS JUMPER	2 <sup>PF</sup>	53-65 12		
								X	KELL JUMPER - 06:36
05:31 - SCHWARTZ 3PTR	X				06:22 - ONWAS 3PTR	X			
05:26 - WELAGE JUMPER	2	21-25 4			06:17 - CLARKE JUMPER	2 <sup>P</sup>	55-65 10		
			X	CHEATHAM FT - 05:08			55-67 12	2 <sup>P</sup>	CHEATHAM DUNK - 05:57
		21-26 5	1	CHEATHAM FT - 05:08	05:23 - WELAGE JUMPER	X			
04:45 - ONWAS 3PTR	X							X	HEMSLEY FT - 05:20
		21-27 6	1	SHEPARD FT - 04:42	05:06 - WILLIAMS FT	X			
		21-28 7	1	SHEPARD FT - 04:42	05:06 - WILLIAMS FT	1	56-67 11		
04:16 - HILLSMAN 3PTR	X							X	SHEPARD JUMPER - 04:43
		21-30 9	2 <sup>PF</sup>	HEMSLEY LAYUP - 04:08	04:23 - ONWAS 3PTR	X			
03:43 - BAHNER JUMPER	X						56-69 13	2 <sup>P</sup>	CHEATHAM LAYUP - 04:00
		21-32 11	2 <sup>PF</sup>	CHEATHAM DUNK - 03:36			56-70 14	1	CHEATHAM FT - 04:00
03:16 - ONWAS LAYUP	2 <sup>P</sup>	23-32 9			03:49 - ONWAS LAYUP	X			
			X	PEREZ 3PTR - 03:00				X	KELL 3PTR - 03:22
			X	ALLEN FT - 02:57			56-71 15	1	CHEATHAM FT - 03:17
02:35 - ONWAS JUMPER	2 <sup>P</sup>	25-32 7					56-72 16	1	CHEATHAM FT - 03:17
			X	ALLEN 3PTR - 02:13	03:05 - WILLIAMS FT	1	57-72 15		
02:02 - ROGERS 3PTR	3	28-32 4			03:05 - WILLIAMS FT	1	58-72 14		
				TO KELL TURN - 01:38				X	HEMSLEY 3PTR - 02:39
01:27 - THORNTON FT	1	29-32 3					58-73 15	1	CHEATHAM FT - 02:36
01:27 - THORNTON FT	1	30-32 2						X	CHEATHAM FT - 02:36
		30-33 3	1	CHEATHAM FT - 01:13	02:22 - WELAGE 3PTR	X			
		30-34 4	1	CHEATHAM FT - 01:13				X	SHEPARD FT - 01:53
00:52 - ONWAS JUMPER	X							X	SHEPARD FT - 01:53
00:47 - WELAGE JUMPER	2	32-34 2						X	POPE FT - 01:27
		32-37 5	3	HEMSLEY 3PTR - 00:28				X	POPE FT - 01:27
00:04 - ONWAS 3PTR	3	35-37 2			01:16 - WILLIAMS TURN	TO			
							58-75 17	2 <sup>P</sup>	CHOL LAYUP - 01:02
					00:48 - ONWAS JUMPER	X			
					00:43 - WILLIAMS LAYUP	2 <sup>P</sup>	60-75 15		
							60-77 17	2 <sup>P</sup>	HEMSLEY JUMPER - 00:29
					00:14 - WELAGE JUMPER	2	62-77 15		

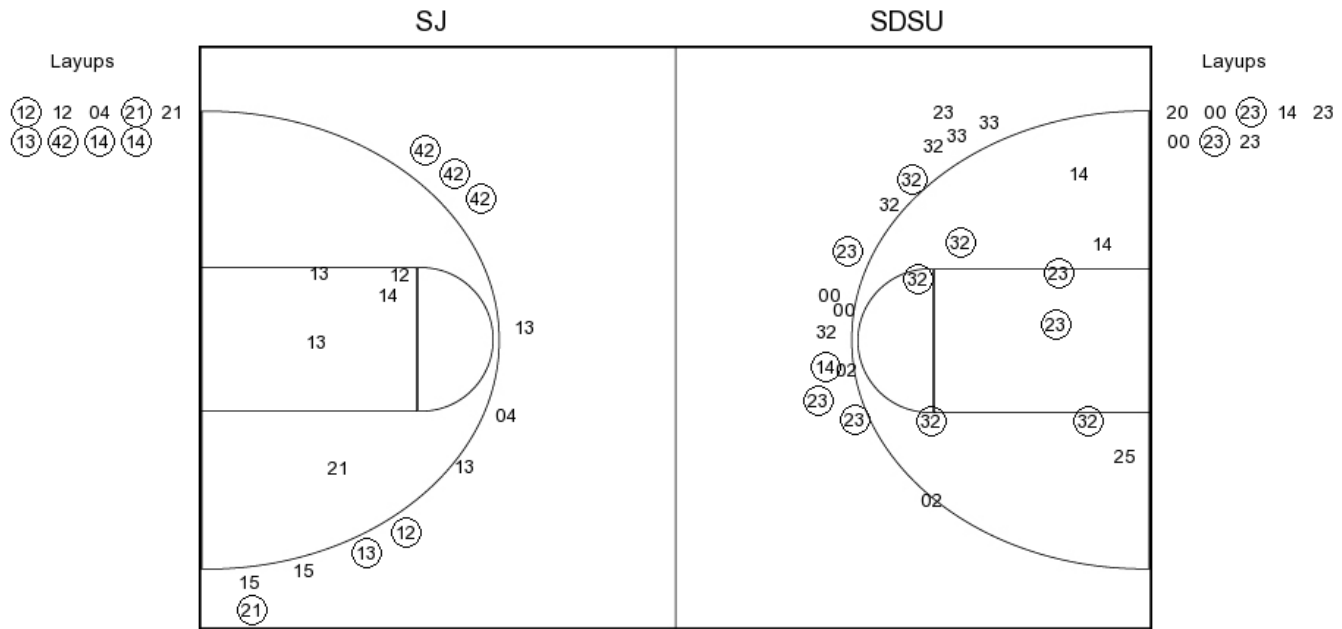


**SAN JOSE STATE vs SAN DIEGO STATE**

**OFFICIAL SHOT CHART**

1/6/2016 at Steve Fisher Court at Viejas Arena

**PERIOD 1**



**SJ PERIOD 1**

FG Made	13
FG Attempted	32
3PFG Made	5
3PFG Attempted	15

**SDSU PERIOD 1**

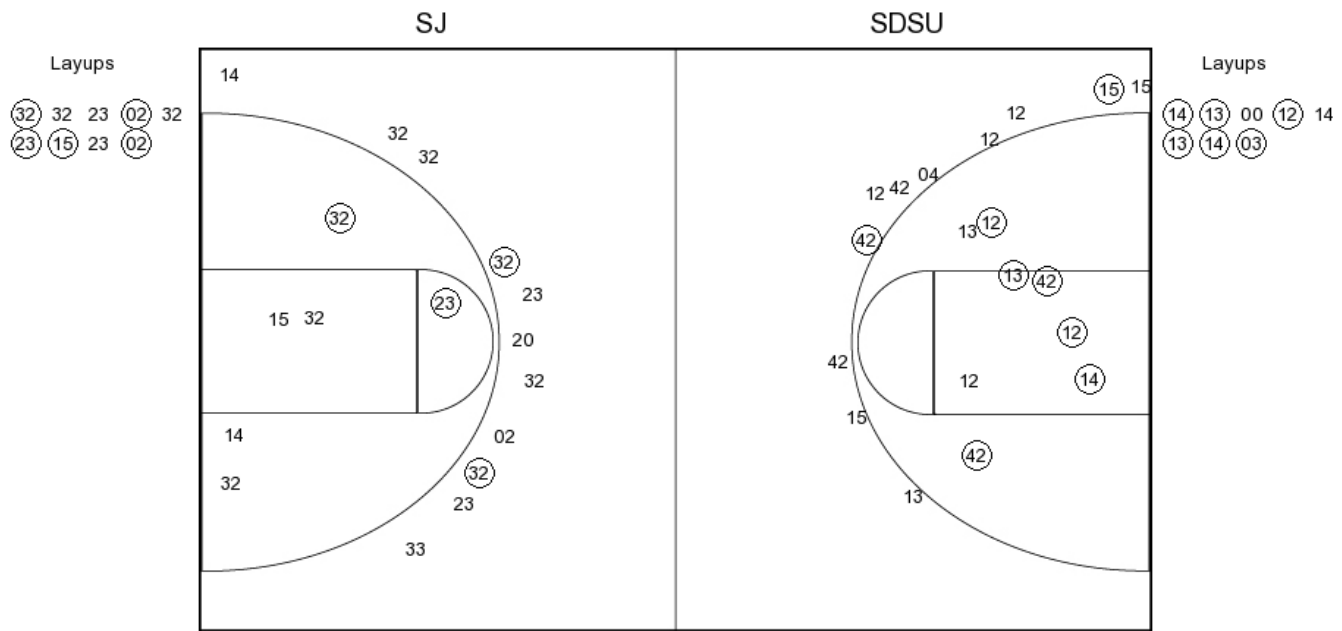
FG Made	11
FG Attempted	25
3PFG Made	6
3PFG Attempted	11

**SAN JOSE STATE vs SAN DIEGO STATE**

**OFFICIAL SHOT CHART**

1/6/2016 at Steve Fisher Court at Viejas Arena

**PERIOD 2**



**SJ PERIOD 2**

FG Made	8
FG Attempted	25
3PFG Made	2
3PFG Attempted	11

**SDSU PERIOD 2**

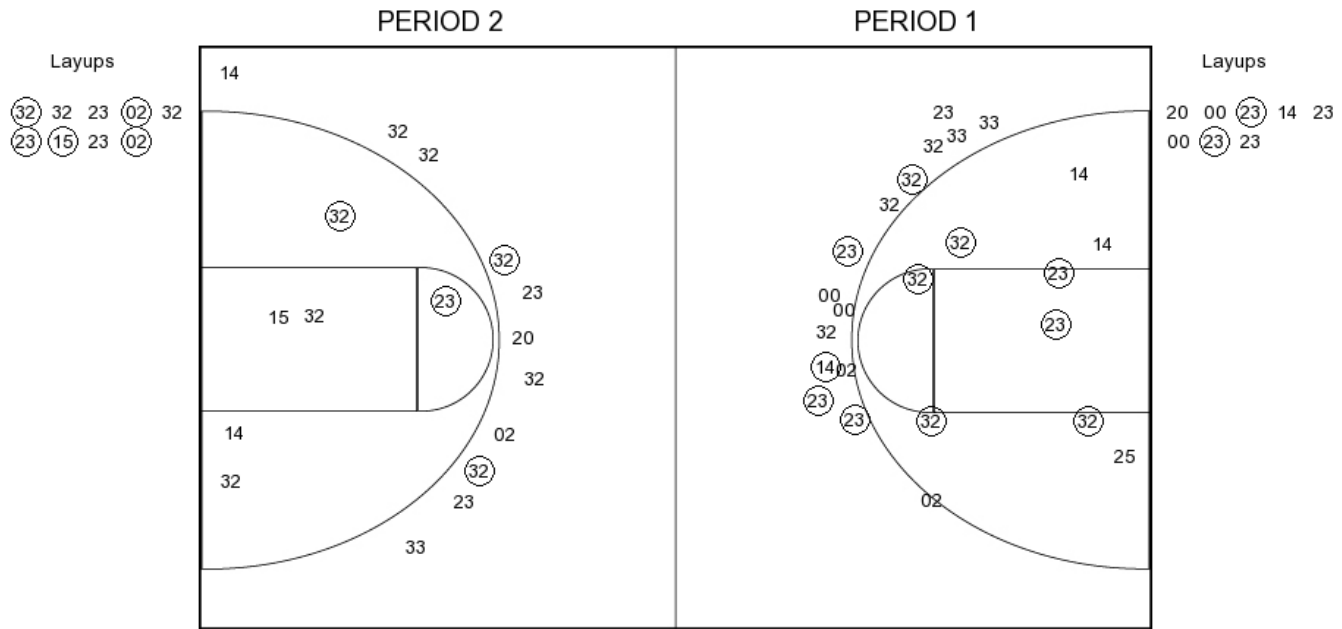
FG Made	14
FG Attempted	27
3PFG Made	2
3PFG Attempted	11

**SAN JOSE STATE vs SAN DIEGO STATE**

**OFFICIAL SHOT CHART**

1/6/2016 at Steve Fisher Court at Viejas Arena

**SAN JOSE STATE**



**SJ PERIOD 1**

FG Made	13
FG Attempted	32
3PFG Made	5
3PFG Attempted	15

**SJ PERIOD 2**

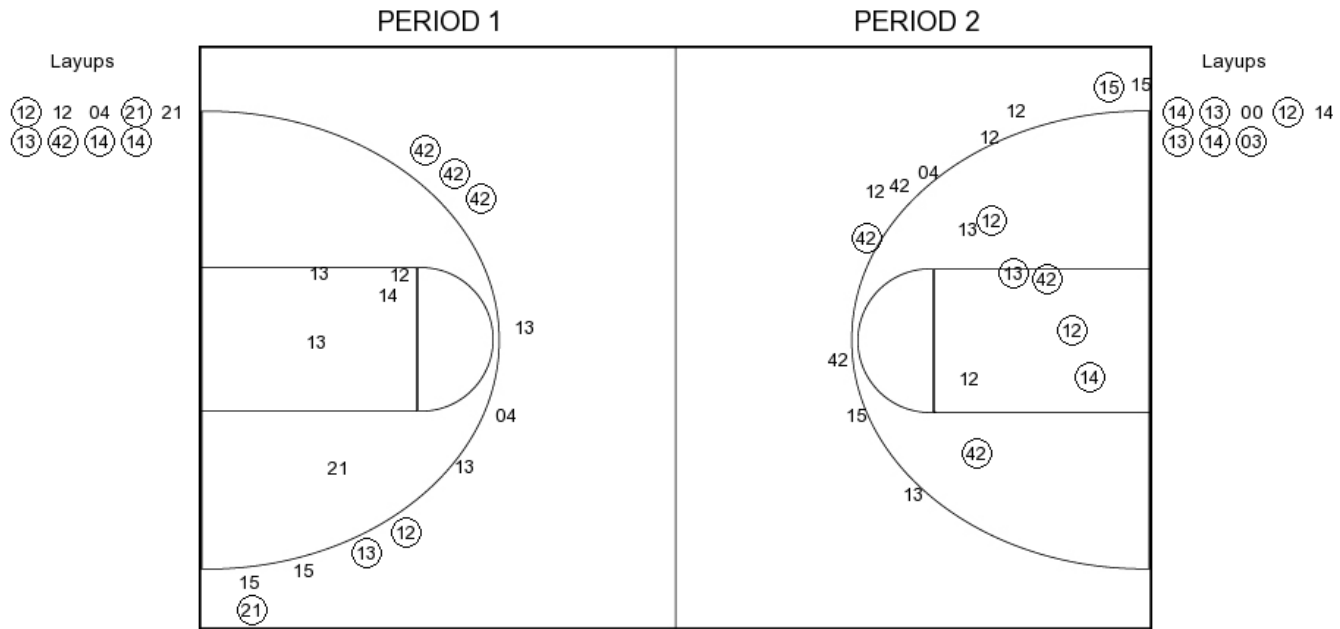
FG Made	8
FG Attempted	25
3PFG Made	2
3PFG Attempted	11

**SAN JOSE STATE vs SAN DIEGO STATE**

**OFFICIAL SHOT CHART**

1/6/2016 at Steve Fisher Court at Viejas Arena

**SAN DIEGO STATE**



**SDSU PERIOD 1**

FG Made	11
FG Attempted	25
3PFG Made	6
3PFG Attempted	11

**SDSU PERIOD 2**

FG Made	14
FG Attempted	27
3PFG Made	2
3PFG Attempted	11