



MONTANA STATE VS WYOMING

11/25/2015

Laramie, Wyo. (Arena-Auditorium)

FINAL STATS

Wyoming
(3-2)

82

Montana State
(3-2)

68

Start Time: 6 p.m. MT

Officials: Randy McCall, Dan Chrisman, Jimmy Casas

Attendance: 0

Official Basketball Box Score -- Game Totals -- Final Statistics
Montana State vs Wyoming
11/25/2015 6 p.m. MT at Laramie, Wyo. (Arena-Auditorium)

Montana State 68 - 3-2

##	Player	S	Total			Rebounds			PF	TP	A	TO	Blk	Stl	Min
			FG-FGA	3PT FG-FGA	FT-FTA	Off Reb	Def Reb	Tot Reb							
00	GREEN,ZACH	g	2-2	0-0	2-2	1	4	5	3	6	0	1	0	0	19
03	HALL,TYLER	g	6-16	2-8	0-0	2	3	5	3	14	0	2	0	0	34
11	KANSEYO,TYSON	f	0-1	0-0	0-0	1	1	2	3	0	0	0	1	0	5
22	COLBERT,MARCUS	g	6-14	0-4	4-8	0	3	3	3	16	3	2	0	0	32
34	ROBISON,DANNY	f	0-5	0-2	0-2	2	1	3	4	0	1	2	0	1	23
01	HOLM,STEPHAN		4-7	3-6	0-1	0	4	4	1	11	1	1	0	0	21
04	NEUMANN,SAM		0-0	0-0	0-0	0	0	0	0	0	1	0	0	0	4
10	MATLOCK,NAHJEE		1-1	0-0	0-0	0	1	1	1	2	1	1	0	0	9
13	GOBELOGLU,SARP		5-6	4-5	0-0	1	1	2	2	14	0	0	0	0	25
24	EVERETT,QUINTON		2-7	1-2	0-0	0	4	4	3	5	1	1	1	1	20
25	BLAKE,SHY		0-0	0-0	0-0	1	0	1	0	0	0	0	0	0	7
TEAM						2	1	3	0		0				
TOTALS			26-59	10-27	6-13	10	23	33	23	68	8	10	2	2	199

Deadball Rebounds: 2,0

FG %	1st Half:	16-28	57.1%	2nd Half:	10-31	32.3%	Game:	26-59	44.1%
3FG %	1st Half:	6-11	54.5%	2nd Half:	4-16	25.0%	Game:	10-27	37.0%
FT %	1st Half:	2-3	66.7%	2nd Half:	4-10	40.0%	Game:	6-13	46.2%

Wyoming 82 - 3-2

##	Player	S	Total			Rebounds			PF	TP	A	TO	Blk	Stl	Min
			FG-FGA	3PT FG-FGA	FT-FTA	Off Reb	Def Reb	Tot Reb							
03	AKA GORSKI,ALEXANDE	g	1-3	1-2	3-4	0	0	0	0	6	1	0	0	0	15
05	HERNDON,ALAN	f	3-5	0-0	0-1	4	8	12	3	6	2	6	1	0	35
14	ADAMS,JOSH	g	8-19	3-8	6-6	1	3	4	2	25	6	1	0	0	38
21	BARNES,JONATHAN	f	1-1	0-0	0-2	0	1	1	1	2	0	0	0	0	8
23	MCMANAMEN,JASON	g	5-9	2-5	4-5	1	3	4	3	16	1	1	0	0	38
01	JAMES,JUSTIN		4-6	3-5	0-0	1	3	4	2	11	2	0	2	0	18
11	LIEBERMAN,JEREMY		2-3	1-2	0-0	0	0	0	0	5	1	0	0	0	8
20	DALTON,HAYDEN		3-5	1-2	4-4	0	6	6	2	11	2	0	0	1	21
55	WASHINGTON III,TREY		0-2	0-2	0-0	0	2	2	2	0	2	1	0	1	20
TEAM						0	2	2	0		0				
TOTALS			27-53	11-26	17-22	7	28	35	15	82	17	9	3	2	201

Deadball Rebounds: 1,0

FG %	1st Half:	11-25	44.0%	2nd Half:	16-28	57.1%	Game:	27-53	50.9%
3FG %	1st Half:	4-11	36.4%	2nd Half:	7-15	46.7%	Game:	11-26	42.3%
FT %	1st Half:	10-13	76.9%	2nd Half:	7-9	77.8%	Game:	17-22	77.3%

Officials: Randy McCall, Dan Chrisman, Jimmy Casas
 Technical Fouls: Montana State- None. Wyoming- None.
 Attendance: 0

Score by periods	1st	2nd	Total
Montana State	40	28	68
Wyoming	36	46	82

Points	In Paint	Off T/O	2nd Chance	Fast Break	Bench
MSU	22	5	5	0	32
WY	24	12	5	2	27

Last FG - MSU 2nd-00:54, WY 2nd-00:16.
 Largest lead - Montana State by 11 1st-10:53; Wyoming by 15 2nd-06:24
 MSU led for 18:18. WY led for 18:04. Game was tied for 3:38.

Score tied - 5 times
 Lead changed - 9 times

Official Basketball Box Score -- Game Totals -- First Half Statistics
Montana State vs Wyoming
11/25/2015 6 p.m. MT at Laramie, Wyo. (Arena-Auditorium)

Montana State, 40, 3-2

##	Player	S	Total			Rebounds			PF	TP	A	T	O	Blk	Stl	Min
			FG	FGA	3PT	FG-FGA	FT	FTA								
00	GREEN,ZACH	g	0-0	0-0	2-2	0	3	3	2	2	0	1	0	0	8	
03	HALL,TYLER	g	4-8	1-3	0-0	1	3	4	1	9	0	0	0	0	18	
11	KANSEYO,TYSON	f	0-0	0-0	0-0	1	1	2	2	0	0	0	1	0	4	
22	COLBERT,MARCUS	g	3-7	0-2	0-0	0	1	1	2	6	2	1	0	0	14	
34	ROBISON,DANNY	f	0-2	0-1	0-0	0	1	1	2	0	0	2	0	1	10	
01	HOLM,STEPHAN		3-3	2-2	0-1	0	0	0	1	8	1	0	0	0	10	
04	NEUMANN,SAM		0-0	0-0	0-0	0	0	0	0	0	1	0	0	0	2	
10	MATLOCK,NAHJEE		1-1	0-0	0-0	0	1	1	1	2	1	1	0	0	7	
13	GOBELOGLU,SARP		3-3	2-2	0-0	0	0	0	1	8	0	0	0	0	12	
24	EVERETT,QUINTON		2-4	1-1	0-0	0	1	1	1	5	0	1	1	0	10	
25	BLAKE,SHY		0-0	0-0	0-0	1	0	1	0	0	0	0	0	0	5	
	TEAM					0	1	1	0		0					
Totals			16-28	6-11	2-3	3	12	15	13	40	5	6	2	1	100	

FG % Half: 16-28
 3FG % Half: 6-11
 FT % Half: 2-3

57.1%
 54.5%
 66.7%

Wyoming, 36, 3-2

##	Player	S	Total			Rebounds			PF	TP	A	T	O	Blk	Stl	Min
			FG	FGA	3PT	FG-FGA	FT	FTA								
03	AKA GORSKI,ALEXANDE	g	1-3	1-2	3-4	0	0	0	0	6	1	0	0	0	12	
05	HERNDON,ALAN	f	0-1	0-0	0-0	2	1	3	0	0	1	4	0	0	16	
14	ADAMS,JOSH	g	4-11	2-5	0-0	1	1	2	1	10	2	1	0	0	19	
21	BARNES,JONATHAN	f	1-1	0-0	0-2	0	1	1	0	2	0	0	0	0	7	
23	MCMANAMEN,JASON	g	2-5	0-2	3-3	1	1	2	1	7	0	0	0	0	19	
01	JAMES,JUSTIN		0-0	0-0	0-0	0	0	0	0	0	0	0	1	0	3	
11	LIEBERMAN,JEREMY		0-1	0-1	0-0	0	0	0	0	0	1	0	0	0	5	
20	DALTON,HAYDEN		3-3	1-1	4-4	0	3	3	1	11	0	0	0	1	11	
55	WASHINGTON III,TREY		0-0	0-0	0-0	0	1	1	1	0	1	1	0	0	8	
	TEAM					0	2	2	0		0					
Totals			11-25	4-11	10-13	4	10	14	4	36	6	6	1	1	100	

FG % Half: 11-25
 3FG % Half: 4-11
 FT % Half: 10-13

44.0%
 36.4%
 76.9%

Officials: Randy McCall, Dan Chrisman, Jimmy Casas
 Technical Fouls: Montana State- None. Wyoming- None.

Score by periods	1st	2nd	Total
Montana State	40	28	68
Wyoming	36	46	82

Points	In Paint	Off T/O	2nd Chance	Fast Break	Bench
MSU	12	5	5	0	23
WY	10	8	8	0	11

Last FG - MSU 1st-00:10, WY 1st-00:41.
 MSU led for 15:36. WY led for 0:46. Game was tied for 3:38.

Score tied - 3 times
 Lead changed - 4 times

Montana State vs Wyoming
11/25/2015; 6 p.m. MT at Laramie, Wyo. (Arena-Auditorium)
Period 1 Play-By-Play

VISITORS: Montana State	Time	Score	Margin	HOME: Wyoming
	19:40			TURNOVER by HERNDON,ALAN
TURNOVER by GREEN,ZACH	19:26			
	19:08			MISSED JUMPER by MCMANAMEN,JASON
REBOUND (DEF) by KANSEYO,TYSON	19:08			
MISSED JUMPER by COLBERT,MARCUS	19:02			
	19:02			REBOUND (DEF) by MCMANAMEN,JASON
	18:53			MISSED JUMPER by ADAMS,JOSH
REBOUND (DEF) by GREEN,ZACH	18:53			
GOOD! JUMPER by HALL,TYLER	18:24	0-2	V 2	
	17:56			MISSED JUMPER by ADAMS,JOSH
BLOCK by KANSEYO,TYSON	17:56			
REBOUND (DEF) by ROBISON,DANNY	17:53			
MISSED JUMPER by COLBERT,MARCUS	17:49			
	17:49			REBOUND (DEF) by BARNES,JONATHAN
	17:31			MISSED 3PTR by MCMANAMEN,JASON
	17:31			REBOUND (OFF) by ADAMS,JOSH
	17:25	3-2	H 1	GOOD! 3PTR by AKA GORSKI,ALEXANDER
	17:25			ASSIST by ADAMS,JOSH
SUB IN: GOBELOGLU,SARP	17:25			
SUB IN: EVERETT,QUINTON	17:25			
SUB OUT: GREEN,ZACH	17:25			
SUB OUT: KANSEYO,TYSON	17:25			
	17:25			SUB IN: DALTON,HAYDEN
	17:25			SUB OUT: BARNES,JONATHAN
MISSED JUMPER by ROBISON,DANNY	16:57			
REBOUND (OFF) by HALL,TYLER	16:57			
GOOD! JUMPER by HALL,TYLER [PNT]	16:52	3-4	V 1	
	16:32			MISSED LAYUP by AKA GORSKI,ALEXANDER
REBOUND (DEF) by HALL,TYLER	16:32			
GOOD! JUMPER by EVERETT,QUINTON [PNT]	16:07	3-6	V 3	
	15:54			MISSED 3PTR by ADAMS,JOSH
	15:54			REBOUND (OFF) by MCMANAMEN,JASON
	15:36			TURNOVER by HERNDON,ALAN
MISSED 3PTR by ROBISON,DANNY	15:24			
	15:24			REBOUND (DEF) by TEAM
	15:21			TIMEOUT MEDIA
SUB IN: NEUMANN,SAM	15:21			
SUB IN: HOLM,STEPHAN	15:21			
SUB IN: MATLOCK,NAHJEE	15:21			
SUB OUT: HALL,TYLER	15:21			
SUB OUT: COLBERT,MARCUS	15:21			
SUB OUT: ROBISON,DANNY	15:21			
	15:21			SUB IN: BARNES,JONATHAN
	15:21			SUB IN: LIEBERMAN,JEREMY
	15:21			SUB OUT: AKA GORSKI,ALEXANDER
	15:21			SUB OUT: DALTON,HAYDEN
FOUL by HOLM,STEPHAN	15:03			
	14:57			MISSED JUMPER by ADAMS,JOSH
BLOCK by EVERETT,QUINTON	14:57			
REBOUND (DEF) by EVERETT,QUINTON	14:54			
GOOD! JUMPER by MATLOCK,NAHJEE [PNT]	14:26	3-8	V 5	
	14:06	5-8	V 3	GOOD! DUNK by BARNES,JONATHAN [PNT]
	14:06			ASSIST by LIEBERMAN,JEREMY

VISITORS: Montana State	Time	Score	Margin	HOME: Wyoming
GOOD! 3PTR by HOLM,STEPHAN	13:51	5-11	V 6	
ASSIST by NEUMANN,SAM	13:51			
	13:32			MISSED JUMPER by HERNDON,ALAN
	13:32			REBOUND (OFF) by HERNDON,ALAN
	13:26	7-11	V 4	GOOD! LAYUP by MCMANAMEN,JASON [PNT]
FOUL by MATLOCK,NAHJEE	13:26			
	13:26	8-11	V 3	GOOD! FT by MCMANAMEN,JASON
SUB IN: HALL,TYLER	13:26			
SUB IN: KANSEYO,TYSON	13:26			
SUB OUT: NEUMANN,SAM	13:26			
SUB OUT: EVERETT,QUINTON	13:26			
MISSED 3PTR by HALL,TYLER	13:14			
REBOUND (OFF) by KANSEYO,TYSON	13:14			
GOOD! 3PTR by HOLM,STEPHAN	12:45	8-14	V 6	
ASSIST by MATLOCK,NAHJEE	12:45			
FOUL by KANSEYO,TYSON	12:29			
	12:29			MISSED FT by BARNES,JONATHAN
	12:29			REBOUND (DEADB) by TEAM
	12:29			MISSED FT by BARNES,JONATHAN
REBOUND (DEF) by GREEN,ZACH	12:29			
SUB IN: COLBERT,MARCUS	12:29			
SUB IN: GREEN,ZACH	12:29			
SUB OUT: HOLM,STEPHAN	12:29			
SUB OUT: MATLOCK,NAHJEE	12:29			
	12:29			SUB IN: JAMES,JUSTIN
	12:29			SUB OUT: HERNDON,ALAN
MISSED JUMPER by HALL,TYLER	12:17			
	12:17			REBOUND (DEF) by TEAM
FOUL by KANSEYO,TYSON	12:15			
SUB IN: BLAKE,SHY	12:15			
SUB OUT: KANSEYO,TYSON	12:15			
	11:50			MISSED 3PTR by LIEBERMAN,JEREMY
REBOUND (DEF) by GREEN,ZACH	11:50			
GOOD! 3PTR by GOBELOGLU,SARP	11:42	8-17	V 9	
ASSIST by COLBERT,MARCUS	11:42			
	11:20			TIMEOUT MEDIA
SUB IN: ROBISON,DANNY	11:20			
SUB OUT: GOBELOGLU,SARP	11:20			
	11:20			SUB IN: HERNDON,ALAN
	11:20			SUB IN: DALTON,HAYDEN
	11:20			SUB OUT: BARNES,JONATHAN
	11:20			SUB OUT: LIEBERMAN,JEREMY
FOUL by GREEN,ZACH	11:18			
	11:08			TURNOVER by HERNDON,ALAN
STEAL by ROBISON,DANNY	11:05			
GOOD! JUMPER by COLBERT,MARCUS	10:53	8-19	V 11	
	10:35	10-19	V 9	GOOD! JUMPER by ADAMS,JOSH
TURNOVER by ROBISON,DANNY	10:19			
FOUL by ROBISON,DANNY	10:19			
	10:04	13-19	V 6	GOOD! 3PTR by ADAMS,JOSH
MISSED 3PTR by HALL,TYLER	09:44			
REBOUND (OFF) by BLAKE,SHY	09:44			
MISSED 3PTR by COLBERT,MARCUS	09:37			
	09:37			REBOUND (DEF) by DALTON,HAYDEN
FOUL by GREEN,ZACH	09:34			
	09:34	14-19	V 5	GOOD! FT by DALTON,HAYDEN
	09:34	15-19	V 4	GOOD! FT by DALTON,HAYDEN
SUB IN: EVERETT,QUINTON	09:34			

VISITORS: Montana State	Time	Score	Margin	HOME: Wyoming
SUB IN: GOBELOGLU,SARP	09:34			
SUB OUT: BLAKE,SHY	09:34			
SUB OUT: GREEN,ZACH	09:34			
MISSED JUMPER by EVERETT,QUINTON	09:20			
	09:20			REBOUND (DEF) by ADAMS,JOSH
	09:11			MISSED 3PTR by ADAMS,JOSH
REBOUND (DEF) by COLBERT,MARCUS	09:11			
MISSED LAYUP by EVERETT,QUINTON	09:03			
	09:03			BLOCK by JAMES,JUSTIN
	09:00			REBOUND (DEF) by HERNDON,ALAN
FOUL by GOBELOGLU,SARP	08:39			
	08:36	16-19	V 3	GOOD! FT by DALTON,HAYDEN
	08:36	17-19	V 2	GOOD! FT by DALTON,HAYDEN
	08:36			SUB IN: AKA GORSKI,ALEXANDER
	08:36			SUB IN: WASHINGTON III,TREY
	08:36			SUB OUT: JAMES,JUSTIN
	08:36			SUB OUT: MCMANAMEN,JASON
	08:24			FOUL by WASHINGTON III,TREY
GOOD! LAYUP by COLBERT,MARCUS [PNT]	08:12	17-21	V 4	
	07:40			MISSED 3PTR by AKA GORSKI,ALEXANDER
REBOUND (DEF) by HALL,TYLER	07:40			
MISSED JUMPER by HALL,TYLER	07:32			
	07:32			REBOUND (DEF) by DALTON,HAYDEN
	07:24			TURNOVER by ADAMS,JOSH
	07:24			FOUL by ADAMS,JOSH
TIMEOUT MEDIA	07:24			
SUB IN: HOLM,STEPHAN	07:24			
SUB OUT: EVERETT,QUINTON	07:24			
	07:24			SUB IN: MCMANAMEN,JASON
	07:24			SUB OUT: HERNDON,ALAN
TURNOVER by ROBISON,DANNY	06:58			
	06:56			STEAL by DALTON,HAYDEN
FOUL by COLBERT,MARCUS	06:53			
	06:53	18-21	V 3	GOOD! FT by AKA GORSKI,ALEXANDER
	06:53	19-21	V 2	GOOD! FT by AKA GORSKI,ALEXANDER
GOOD! JUMPER by COLBERT,MARCUS [PNT]	06:41	19-23	V 4	
	06:18	21-23	V 2	GOOD! LAYUP by ADAMS,JOSH [PNT]
GOOD! 3PTR by GOBELOGLU,SARP	05:57	21-26	V 5	
ASSIST by HOLM,STEPHAN	05:57			
FOUL by ROBISON,DANNY	05:35			
	05:35	22-26	V 4	GOOD! FT by MCMANAMEN,JASON
	05:35	23-26	V 3	GOOD! FT by MCMANAMEN,JASON
SUB IN: GREEN,ZACH	05:35			
SUB OUT: ROBISON,DANNY	05:35			
GOOD! JUMPER by HOLM,STEPHAN [PNT]	05:21	23-28	V 5	
	05:21			FOUL by MCMANAMEN,JASON
MISSED FT by HOLM,STEPHAN	05:21			
	05:21			REBOUND (DEF) by WASHINGTON III,TREY
	05:12	25-28	V 3	GOOD! LAYUP by DALTON,HAYDEN [PNT]
	05:12			ASSIST by AKA GORSKI,ALEXANDER
MISSED 3PTR by COLBERT,MARCUS	04:56			
	04:56			REBOUND (DEF) by DALTON,HAYDEN
	04:47	28-28	T	GOOD! 3PTR by ADAMS,JOSH
	04:47			ASSIST by WASHINGTON III,TREY
FOUL by COLBERT,MARCUS	04:27			
TURNOVER by COLBERT,MARCUS	04:27			
SUB IN: MATLOCK,NAHJEE	04:27			
SUB OUT: COLBERT,MARCUS	04:27			

VISITORS: Montana State	Time	Score	Margin	HOME: Wyoming
	04:27			SUB IN: HERNDON,ALAN
	04:27			SUB OUT: WASHINGTON III,TREY
	04:13			MISSED 3PTR by MCMANAMEN,JASON
	04:13			REBOUND (OFF) by HERNDON,ALAN
	04:07	30-28	H 2	GOOD! LAYUP by DALTON,HAYDEN [PNT]
	04:07			ASSIST by HERNDON,ALAN
GOOD! JUMPER by HALL,TYLER	03:54	30-30	T	
	03:43			MISSED LAYUP by ADAMS,JOSH
REBOUND (DEF) by MATLOCK,NAHJEE	03:43			
	03:35			FOUL by DALTON,HAYDEN
TIMEOUT media	03:35			
GOOD! FT by GREEN,ZACH	03:35	30-31	V 1	
GOOD! FT by GREEN,ZACH	03:35	30-32	V 2	
SUB IN: EVERETT,QUINTON	03:35			
SUB IN: BLAKE,SHY	03:35			
SUB OUT: GREEN,ZACH	03:35			
SUB OUT: GOBELOGLU,SARP	03:35			
	03:35			SUB IN: LIEBERMAN,JEREMY
	03:35			SUB IN: WASHINGTON III,TREY
	03:35			SUB OUT: ADAMS,JOSH
	03:35			SUB OUT: DALTON,HAYDEN
	03:13	32-32	T	GOOD! JUMPER by MCMANAMEN,JASON
TURNOVER by MATLOCK,NAHJEE	02:46			
	02:41			SUB IN: ADAMS,JOSH
	02:41			SUB OUT: LIEBERMAN,JEREMY
	02:25			TURNOVER by HERNDON,ALAN
GOOD! 3PTR by HALL,TYLER	02:10	32-35	V 3	
	01:48			TURNOVER by WASHINGTON III,TREY
TURNOVER by EVERETT,QUINTON	01:34			
FOUL by EVERETT,QUINTON	01:34			
FOUL by HALL,TYLER	01:24			
	01:24	33-35	V 2	GOOD! FT by AKA GORSKI,ALEXANDER
	01:24			MISSED FT by AKA GORSKI,ALEXANDER
REBOUND (DEF) by HALL,TYLER	01:24			
TIMEOUT 30SEC	01:23			
SUB IN: COLBERT,MARCUS	01:16			
SUB OUT: BLAKE,SHY	01:16			
	01:16			SUB IN: DALTON,HAYDEN
	01:16			SUB OUT: AKA GORSKI,ALEXANDER
GOOD! JUMPER by GOBELOGLU,SARP	01:06	33-37	V 4	
	00:41	36-37	V 1	GOOD! 3PTR by DALTON,HAYDEN
	00:41			ASSIST by ADAMS,JOSH
GOOD! 3PTR by EVERETT,QUINTON	00:10	36-40	V 4	
ASSIST by COLBERT,MARCUS	00:10			
	00:02			MISSED 3PTR by ADAMS,JOSH
REBOUND (DEF) by TEAM	00:02			

Montana State 40, Wyoming 36

Period 1-only	In Paint	Off T/O	2nd Chance	Fast Break	Bench	****
MSU	12	5	5	0	23	Score tied - 2 times
WY	10	8	8	0	11	Lead changed - 4 times

Official Basketball Box Score -- Game Totals -- Second Half Statistics
Montana State vs Wyoming
11/25/2015 6 p.m. MT at Laramie, Wyo. (Arena-Auditorium)

Montana State, 28, 3-2

##	Player	S	Total			Rebounds			PF	TP	A	TO	Blk	Stl	Min
			FG-FGA	3PT FG-FGA	FT-FTA	Off Reb	Def Reb	Tot Reb							
00	GREEN,ZACH	g	2-2	0-0	0-0	1	1	2	1	4	0	0	0	0	11
03	HALL, TYLER	g	2-8	1-5	0-0	1	0	1	2	5	0	2	0	0	16
11	KANSEYO, TYSON	f	0-1	0-0	0-0	0	0	0	1	0	0	0	0	1	
22	COLBERT, MARCUS	g	3-7	0-2	4-8	0	2	2	1	10	1	1	0	0	18
34	ROBISON, DANNY	f	0-3	0-1	0-2	2	0	2	2	0	1	0	0	0	13
01	HOLM, STEPHAN		1-4	1-4	0-0	0	4	4	0	3	0	1	0	0	11
04	NEUMANN, SAM		0-0	0-0	0-0	0	0	0	0	0	0	0	0	0	2
10	MATLOCK, NAHJEE		0-0	0-0	0-0	0	0	0	0	0	0	0	0	0	2
13	GOBELOGLU, SARP		2-3	2-3	0-0	1	1	2	1	6	0	0	0	0	13
24	EVERETT, QUINTON		0-3	0-1	0-0	0	3	3	2	0	1	0	0	1	10
25	BLAKE, SHY		0-0	0-0	0-0	0	0	0	0	0	0	0	0	0	2
TEAM						2	0	2	0		0				
Totals			10-31	4-16	4-10	7	11	18	10	28	3	4	0	1	99
FG %	Half:	10-31	32.3%												
3FG %	Half:	4-16	54.5%												
FT %	Half:	4-10	40.0%												

Wyoming, 46, 3-2

##	Player	S	Total			Rebounds			PF	TP	A	TO	Blk	Stl	Min
			FG-FGA	3PT FG-FGA	FT-FTA	Off Reb	Def Reb	Tot Reb							
03	AKA GORSKI, ALEXANDE	g	0-0	0-0	0-0	0	0	0	0	0	0	0	0	0	3
05	HERNDON, ALAN	f	3-4	0-0	0-1	2	7	9	3	6	1	2	1	0	19
14	ADAMS, JOSH	g	4-8	1-3	6-6	0	2	2	1	15	4	0	0	0	19
21	BARNES, JONATHAN	f	0-0	0-0	0-0	0	0	0	1	0	0	0	0	1	
23	MCMANAMEN, JASON	g	3-4	2-3	1-2	0	2	2	2	9	1	1	0	0	19
01	JAMES, JUSTIN		4-6	3-5	0-0	1	3	4	2	11	2	0	1	0	15
11	LIEBERMAN, JEREMY		2-2	1-1	0-0	0	0	0	0	5	0	0	0	0	3
20	DALTON, HAYDEN		0-2	0-1	0-0	0	3	3	1	0	2	0	0	0	10
55	WASHINGTON III, TREY		0-2	0-2	0-0	0	1	1	1	0	1	0	0	1	12
TEAM						0	0	0	0		0				
Totals			16-28	7-15	7-9	3	18	21	11	46	11	3	2	1	101
FG %	Half:	16-28	57.1%												
3FG %	Half:	7-15	36.4%												
FT %	Half:	7-9	77.8%												

Officials: Randy McCall, Dan Chrisman, Jimmy Casas
 Technical Fouls: Montana State- None. Wyoming- None.

Score by periods	1st	2nd	Total
Montana State	40	28	68
Wyoming	36	46	82

Points	In Paint	Off T/O	2nd Chance	Fast Break	Bench
MSU	10	0	0	0	9
WY	14	4	5	2	16

Last FG - MSU 2nd-00:54, WY 2nd-00:16.
 MSU led for 2:42. WY led for 17:18. Game was tied for 0:00.

Score tied - 2 times
 Lead changed - 5 times

Montana State vs Wyoming
11/25/2015; 6 p.m. MT at Laramie, Wyo. (Arena-Auditorium)
Period 2 Play-By-Play

VISITORS: Montana State	Time	Score	Margin	HOME: Wyoming
MISSED JUMPER by KANSEYO,TYSON	19:39			
	19:39			REBOUND (DEF) by HERNDON,ALAN
	19:17	38-40	V 2	GOOD! JUMPER by HERNDON,ALAN [PNT]
MISSED JUMPER by HALL,TYLER	18:58			
REBOUND (OFF) by HALL,TYLER	18:58			
MISSED 3PTR by ROBISON,DANNY	18:54			
	18:54			REBOUND (DEF) by HERNDON,ALAN
	18:44	40-40	T	GOOD! LAYUP by ADAMS,JOSH [PNT]
FOUL by KANSEYO,TYSON	18:44			
	18:44	41-40	H 1	GOOD! FT by ADAMS,JOSH
SUB IN: GOBELOGLU,SARP	18:44			
SUB OUT: KANSEYO,TYSON	18:44			
	18:35			FOUL by BARNES,JONATHAN
	18:35			SUB IN: DALTON,HAYDEN
	18:35			SUB OUT: BARNES,JONATHAN
GOOD! JUMPER by COLBERT,MARCUS [PNT]	18:16	41-42	V 1	
	17:52	43-42	H 1	GOOD! JUMPER by HERNDON,ALAN [PNT]
	17:52			ASSIST by MCMANAMEN,JASON
	17:41			FOUL by MCMANAMEN,JASON
GOOD! FT by COLBERT,MARCUS	17:41	43-43	T	
GOOD! FT by COLBERT,MARCUS	17:41	43-44	V 1	
	17:21			TURNOVER by HERNDON,ALAN
	17:21			FOUL by HERNDON,ALAN
	17:21			SUB IN: JAMES,JUSTIN
	17:21			SUB OUT: AKA GORSKI,ALEXANDER
MISSED 3PTR by GOBELOGLU,SARP	17:03			
	17:03			REBOUND (DEF) by JAMES,JUSTIN
FOUL by HALL,TYLER	16:53			
	16:39	46-44	H 2	GOOD! 3PTR by JAMES,JUSTIN
	16:39			ASSIST by ADAMS,JOSH
MISSED 3PTR by HALL,TYLER	16:11			
	16:11			REBOUND (DEF) by DALTON,HAYDEN
FOUL by ROBISON,DANNY	15:47			
	15:47			TIMEOUT MEDIA
SUB IN: EVERETT,QUINTON	15:47			
SUB IN: HOLM,STEPHAN	15:47			
SUB OUT: GREEN,ZACH	15:47			
SUB OUT: HALL,TYLER	15:47			
SUB OUT: COLBERT,MARCUS	15:47			
SUB OUT: ROBISON,DANNY	15:47			
SUB OUT: GOBELOGLU,SARP	15:47			
	15:47			SUB OUT: JAMES,JUSTIN
	15:47			SUB OUT: HERNDON,ALAN
	15:47			SUB OUT: ADAMS,JOSH
	15:47			SUB OUT: DALTON,HAYDEN
	15:47			SUB OUT: MCMANAMEN,JASON
	15:34	49-44	H 5	GOOD! 3PTR by JAMES,JUSTIN
	15:34			ASSIST by DALTON,HAYDEN
GOOD! 3PTR by GOBELOGLU,SARP	15:19	49-47	H 2	
ASSIST by ROBISON,DANNY	15:19			
	14:49			MISSED 3PTR by DALTON,HAYDEN
REBOUND (DEF) by EVERETT,QUINTON	14:49			
MISSED JUMPER by ROBISON,DANNY	14:31			

VISITORS: Montana State	Time	Score	Margin	HOME: Wyoming
	14:31			REBOUND (DEF) by ADAMS,JOSH
	14:10			TURNOVER by MCMANAMEN,JASON
STEAL by EVERETT,QUINTON	14:08			
MISSED 3PTR by HOLM,STEPHAN	14:02			
	14:02			REBOUND (DEF) by HERNDON,ALAN
FOUL by EVERETT,QUINTON	13:46			
SUB IN: HALL,TYLER	13:44			
SUB IN: NEUMANN,SAM	13:44			
SUB IN: BLAKE,SHY	13:44			
SUB OUT: EVERETT,QUINTON	13:44			
	13:44			SUB IN: WASHINGTON III,TREY
	13:34	51-47	H 4	GOOD! JUMPER by MCMANAMEN,JASON
	13:34			ASSIST by JAMES,JUSTIN
	13:28			FOUL by JAMES,JUSTIN
GOOD! 3PTR by HALL,TYLER	13:12	51-50	H 1	
	12:47	53-50	H 3	GOOD! DUNK by HERNDON,ALAN [PNT]
	12:47			ASSIST by ADAMS,JOSH
MISSED 3PTR by HALL,TYLER	12:36			
	12:36			REBOUND (DEF) by WASHINGTON III,TREY
	12:21			MISSED 3PTR by JAMES,JUSTIN
	12:21			REBOUND (OFF) by HERNDON,ALAN
	12:14	56-50	H 6	GOOD! 3PTR by MCMANAMEN,JASON
	12:14			ASSIST by JAMES,JUSTIN
	12:11			TIMEOUT media
SUB IN: MATLOCK,NAHJEE	12:11			
SUB IN: ROBISON,DANNY	12:11			
SUB OUT: HALL,TYLER	12:11			
SUB OUT: NEUMANN,SAM	12:11			
SUB OUT: BLAKE,SHY	12:11			
SUB OUT: HOLM,STEPHAN	12:11			
	12:11			SUB IN: LIEBERMAN,JEREMY
TURNOVER by HALL,TYLER	11:55			
SUB IN: GOBELOGLU,SARP	11:55			
SUB IN: EVERETT,QUINTON	11:55			
	11:40			MISSED JUMPER by ADAMS,JOSH
REBOUND (DEF) by HOLM,STEPHAN	11:40			
GOOD! 3PTR by HOLM,STEPHAN	11:20	56-53	H 3	
ASSIST by EVERETT,QUINTON	11:20			
	11:01	59-53	H 6	GOOD! 3PTR by LIEBERMAN,JEREMY
	10:56			FOUL by ADAMS,JOSH
TURNOVER by HOLM,STEPHAN	10:35			
	10:34			STEAL by WASHINGTON III,TREY
	10:32	61-53	H 8	GOOD! LAYUP by LIEBERMAN,JEREMY [FB/PNT]
	10:32			ASSIST by WASHINGTON III,TREY
MISSED 3PTR by HOLM,STEPHAN	10:24			
	10:24			BLOCK by HERNDON,ALAN
REBOUND (OFF) by ROBISON,DANNY	10:21			
MISSED LAYUP by ROBISON,DANNY	10:19			
REBOUND (OFF) by TEAM	10:19			
SUB IN: COLBERT,MARCUS	10:19			
SUB OUT: MATLOCK,NAHJEE	10:19			
	10:12			FOUL by WASHINGTON III,TREY
TURNOVER by COLBERT,MARCUS	10:02			
FOUL by COLBERT,MARCUS	10:02			
SUB IN: HALL,TYLER	10:02			
SUB OUT: EVERETT,QUINTON	10:02			
	09:50			MISSED 3PTR by MCMANAMEN,JASON
REBOUND (DEF) by HOLM,STEPHAN	09:50			

VISITORS: Montana State	Time	Score	Margin	HOME: Wyoming
GOOD! LAYUP by COLBERT,MARCUS [PNT]	09:30	61-55	H 6	
	09:21	63-55	H 8	GOOD! DUNK by ADAMS,JOSH [PNT]
FOUL by ROBISON,DANNY	09:21			
	09:21	64-55	H 9	GOOD! FT by ADAMS,JOSH
SUB IN: EVERETT,QUINTON	09:21			
SUB OUT: ROBISON,DANNY	09:21			
	09:21			SUB IN: JAMES,JUSTIN
	09:21			SUB OUT: LIEBERMAN,JEREMY
GOOD! JUMPER by HALL,TYLER	09:08	64-57	H 7	
	08:55			MISSED 3PTR by ADAMS,JOSH
REBOUND (DEF) by COLBERT,MARCUS	08:55			
MISSED JUMPER by COLBERT,MARCUS	08:44			
	08:44			BLOCK by JAMES,JUSTIN
	08:42			REBOUND (DEF) by JAMES,JUSTIN
	08:36	67-57	H 10	GOOD! 3PTR by MCMANAMEN,JASON
	08:36			ASSIST by ADAMS,JOSH
TIMEOUT 30SEC	08:27			
TIMEOUT MEDIA	08:27			
	08:27			SUB IN: DALTON,HAYDEN
MISSED JUMPER by EVERETT,QUINTON	08:12			
	08:12			REBOUND (DEF) by HERNDON,ALAN
	07:42			MISSED 3PTR by JAMES,JUSTIN
REBOUND (DEF) by HOLM,STEPHAN	07:42			
MISSED 3PTR by HALL,TYLER	07:35			
	07:35			REBOUND (DEF) by HERNDON,ALAN
FOUL by EVERETT,QUINTON	07:31			
	07:31			MISSED FT by HERNDON,ALAN
REBOUND (DEF) by EVERETT,QUINTON	07:31			
SUB IN: GREEN,ZACH	07:31			
	07:31			SUB IN: ADAMS,JOSH
MISSED JUMPER by COLBERT,MARCUS	07:16			
REBOUND (OFF) by GREEN,ZACH	07:16			
MISSED 3PTR by EVERETT,QUINTON	07:09			
	07:09			REBOUND (DEF) by JAMES,JUSTIN
	06:51	70-57	H 13	GOOD! 3PTR by JAMES,JUSTIN
	06:51			ASSIST by DALTON,HAYDEN
TURNOVER by HALL,TYLER	06:37			
	06:37			SUB IN: MCMANAMEN,JASON
FOUL by GOBELOGLU,SARP	06:24			
	06:24	71-57	H 14	GOOD! FT by ADAMS,JOSH
	06:24	72-57	H 15	GOOD! FT by ADAMS,JOSH
GOOD! 3PTR by GOBELOGLU,SARP	06:15	72-60	H 12	
ASSIST by COLBERT,MARCUS	06:15			
	05:58			MISSED JUMPER by DALTON,HAYDEN
REBOUND (DEF) by GOBELOGLU,SARP	05:58			
GOOD! LAYUP by GREEN,ZACH [PNT]	05:44	72-62	H 10	
	05:22			MISSED 3PTR by WASHINGTON III,TREY
REBOUND (DEF) by EVERETT,QUINTON	05:22			
	05:11			FOUL by DALTON,HAYDEN
MISSED FT by COLBERT,MARCUS	05:11			
REBOUND (DEADB) by TEAM	05:11			
MISSED FT by COLBERT,MARCUS	05:11			
	05:11			REBOUND (DEF) by ADAMS,JOSH
SUB IN: HOLM,STEPHAN	05:11			
SUB OUT: EVERETT,QUINTON	05:11			
	05:11			SUB IN: HERNDON,ALAN
	05:11			SUB OUT: DALTON,HAYDEN
	04:47			MISSED JUMPER by ADAMS,JOSH

VISITORS: Montana State	Time	Score	Margin	HOME: Wyoming
	04:47			REBOUND (OFF) by HERNDON,ALAN
	04:42			MISSED JUMPER by HERNDON,ALAN
REBOUND (DEF) by COLBERT,MARCUS	04:42			
GOOD! LAYUP by GREEN,ZACH [PNT]	04:33	72-64	H 8	
	04:08	74-64	H 10	GOOD! DUNK by ADAMS,JOSH [PNT]
	04:08			ASSIST by HERNDON,ALAN
	03:57			FOUL by JAMES,JUSTIN
TIMEOUT MEDIA	03:57			
GOOD! FT by COLBERT,MARCUS	03:57	74-65	H 9	
MISSED FT by COLBERT,MARCUS	03:57			
	03:57			REBOUND (DEF) by MCMANAMEN,JASON
	03:57			MISSED 3PTR by WASHINGTON III,TREY
REBOUND (DEF) by HOLM,STEPHAN	03:57			
SUB IN: ROBISON,DANNY	03:57			
SUB OUT: GOBELOGLU,SARP	03:57			
	03:54			FOUL by HERNDON,ALAN
GOOD! FT by COLBERT,MARCUS	03:38	74-66	H 8	
MISSED FT by COLBERT,MARCUS	03:24			
	03:24			REBOUND (DEF) by HERNDON,ALAN
	02:37			MISSED 3PTR by ADAMS,JOSH
	02:37			REBOUND (OFF) by JAMES,JUSTIN
FOUL by GREEN,ZACH	02:19			
	02:19	75-66	H 9	GOOD! FT by ADAMS,JOSH
	02:19	76-66	H 10	GOOD! FT by ADAMS,JOSH
SUB IN: GOBELOGLU,SARP	02:19			
SUB OUT: GREEN,ZACH	02:19			
MISSED 3PTR by COLBERT,MARCUS	02:10			
REBOUND (OFF) by GOBELOGLU,SARP	02:10			
MISSED 3PTR by HOLM,STEPHAN	02:02			
REBOUND (OFF) by ROBISON,DANNY	02:02			
	02:02			FOUL by MCMANAMEN,JASON
MISSED FT by ROBISON,DANNY	02:02			
REBOUND (DEADB) by TEAM	02:02			
SUB IN: GREEN,ZACH	02:02			
SUB IN: EVERETT,QUINTON	02:02			
SUB OUT: HOLM,STEPHAN	02:02			
SUB OUT: GOBELOGLU,SARP	02:02			
MISSED FT by ROBISON,DANNY	02:00			
	02:00			REBOUND (DEF) by DALTON,HAYDEN
	01:47			TURNOVER by HERNDON,ALAN
	01:47			FOUL by HERNDON,ALAN
MISSED 3PTR by HALL,TYLER	01:42			
REBOUND (OFF) by TEAM	01:42			
SUB IN: GOBELOGLU,SARP	01:40			
SUB OUT: GREEN,ZACH	01:40			
	01:40			SUB IN: DALTON,HAYDEN
	01:40			SUB OUT: WASHINGTON III,TREY
MISSED JUMPER by HALL,TYLER	01:32			
	01:32			REBOUND (DEF) by MCMANAMEN,JASON
SUB IN: GREEN,ZACH	01:28			
SUB OUT: GOBELOGLU,SARP	01:28			
	01:04	78-66	H 12	GOOD! JUMPER by JAMES,JUSTIN
	01:04			ASSIST by ADAMS,JOSH
GOOD! JUMPER by COLBERT,MARCUS [PNT]	00:54	78-68	H 10	
FOUL by HALL,TYLER	00:50			
	00:50	79-68	H 11	GOOD! FT by MCMANAMEN,JASON
	00:50			MISSED FT by MCMANAMEN,JASON
REBOUND (DEF) by GREEN,ZACH	00:50			

VISITORS: Montana State	Time	Score	Margin	HOME: Wyoming
MISSED 3PTR by COLBERT,MARCUS	00:47			
	00:47			REBOUND (DEF) by DALTON,HAYDEN
	00:16	82-68	H 14	GOOD! 3PTR by ADAMS,JOSH
MISSED JUMPER by EVERETT,QUINTON	00:04			
	00:04			REBOUND (DEF) by HERNDON,ALAN

Montana State 68, Wyoming 82

Period 2-only	In Paint	Off T/O	2nd Chance	Fast Break	Bench	****
MSU	10	0	0	0	9	Score tied - 2 times
WY	14	4	5	2	16	Lead changed - 4 times

09:44 - HALL_3PTR [X]

09:37 - COLBERT_3PTR [X]

19-14
5 1 DALTON_FT,-,09:34

19-15
4 1 DALTON_FT,-,09:34

09:20 - EVERETT_JUMPER [X]

[X] ADAMS_3PTR - 09:11

09:03 - EVERETT_LAYUP [X]

19-16
3 1 DALTON_FT,-,08:36

19-17
2 1 DALTON_FT,-,08:36

08:12,- COLBERT_LAYUP [2P] 21-17
4

[X] AKA GORSKI_3PTR - 07:40

07:32 - HALL_JUMPER [X]

TO ADAMS TURN -,07:24

06:58,-,ROBISON TURN TO

21-18
3 1 AKA GORSKI_FT,-,06:53

21-19
2 1 AKA GORSKI_FT,-,06:53

06:41,- COLBERT_JUMPER [2P] 23-19
4

23-21
2 [2P] ADAMS_LAYUP,-,06:18

05:57,- GOBELOGLU_3PTR [3] 26-21
5

26-22
4 1 MCMANAMEN_FT,-,05:35

26-23
3 1 MCMANAMEN_FT,-,05:35

05:21,-,HOLM_JUMPER [2P] 28-23
5

05:21 - HOLM_FT [X]

28-25
3 [2P] DALTON_LAYUP,-,05:12

04:56 - COLBERT_3PTR [X]

28-28
0 [3] ADAMS_3PTR,-,04:47

04:27,-,COLBERT TURN TO

[X] MCMANAMEN_3PTR - 04:13

28-30
2 [2P] DALTON_LAYUP,-,04:07

03:54,-,HALL_JUMPER [2] 30-30
0

[X] ADAMS_LAYUP - 03:43

03:35,-,GREEN_FT [1] 31-30
1

03:35,-,GREEN_FT [1] 32-30
2

32-32
0 [2] MCMANAMEN_JUMPER,-,03:13

02:46,-,MATLOCK TURN TO

TO HERNDON TURN -,02:25

02:10,-,HALL_3PTR [3] 35-32
3

TO WASHINGTON III TURN -,01:48

01:34,-,EVERETT TURN TO

35-33
2 [1] AKA GORSKI_FT,-,01:24

[X] AKA GORSKI_FT - 01:24

01:06,- GOBELOGLU_JUMPER [2] 37-33
4

37-36
1 [3] DALTON_3PTR,-,00:41

10:19 - ROBISON_LAYUP [X]

10:02,-,COLBERT TURN TO

[X] MCMANAMEN_3PTR - 09:50

09:30,- COLBERT_LAYUP [2P] 55-61
6

55-63
8 [2P] ADAMS_DUNK,-,09:21

55-64
9 [1] ADAMS_FT,-,09:21

09:08,- HALL_JUMPER [2] 57-64
7

[X] ADAMS_3PTR - 08:55

08:44 - COLBERT_JUMPER [X]

57-67
10 [3] MCMANAMEN_3PTR,-,08:36

08:12 - EVERETT_JUMPER [X]

[X] JAMES_3PTR - 07:42

07:35 - HALL_3PTR [X]

[X] HERNDON_FT - 07:31

07:16 - COLBERT_JUMPER [X]

07:09 - EVERETT_3PTR [X]

57-70
13 [3] JAMES_3PTR,-,06:51

06:37,-,HALL TURN TO

57-71
14 [1] ADAMS_FT,-,06:24

57-72
15 [1] ADAMS_FT,-,06:24

06:15,- GOBELOGLU_3PTR [3] 60-72
12

[X] DALTON_JUMPER - 05:58

05:44,- GREEN_LAYUP [2P] 62-72
10

[X] WASHINGTON III_3PTR - 05:22

05:11 - COLBERT_FT [X]

05:11 - COLBERT_FT [X]

[X] ADAMS_JUMPER - 04:47

[X] HERNDON_JUMPER - 04:42

04:33,- GREEN_LAYUP [2P] 64-72
8

64-74
10 [2P] ADAMS_DUNK,-,04:08

03:57,- COLBERT_FT [1] 65-74
9

03:57 - COLBERT_FT [X]

[X] WASHINGTON III_3PTR - 03:57

03:38,- COLBERT_FT [1] 66-74
8

03:24 - COLBERT_FT [X]

[X] ADAMS_3PTR - 02:37

66-75
9 [1] ADAMS_FT,-,02:19

00:10,-,EVERETT,3PTR

3	40-36 -4
---	-------------

X

ADAMS,3PTR - 00:02

66-76 10	1
-------------	---

ADAMS,FT,-,02:19

02:10 - COLBERT,3PTR

X

02:02 - HOLM,3PTR

X

02:02 - ROBISON,FT

X

02:00 - ROBISON,FT

X

TO HERNDON TURN -,01:47

01:42 - HALL,3PTR

X

01:32 - HALL,JUMPER

X

66-78 12	2
-------------	---

JAMES,JUMPER,-,01:04

00:54,-,COLBERT,JUMPER

2 ^P

68-78 10

68-79 11	1
-------------	---

MCMANAMEN,FT,-,00:50

X

MCMANAMEN,FT - 00:50

00:47 - COLBERT,3PTR

X

68-82 14	3
-------------	---

ADAMS,3PTR,-,00:16

00:04 - EVERETT,JUMPER

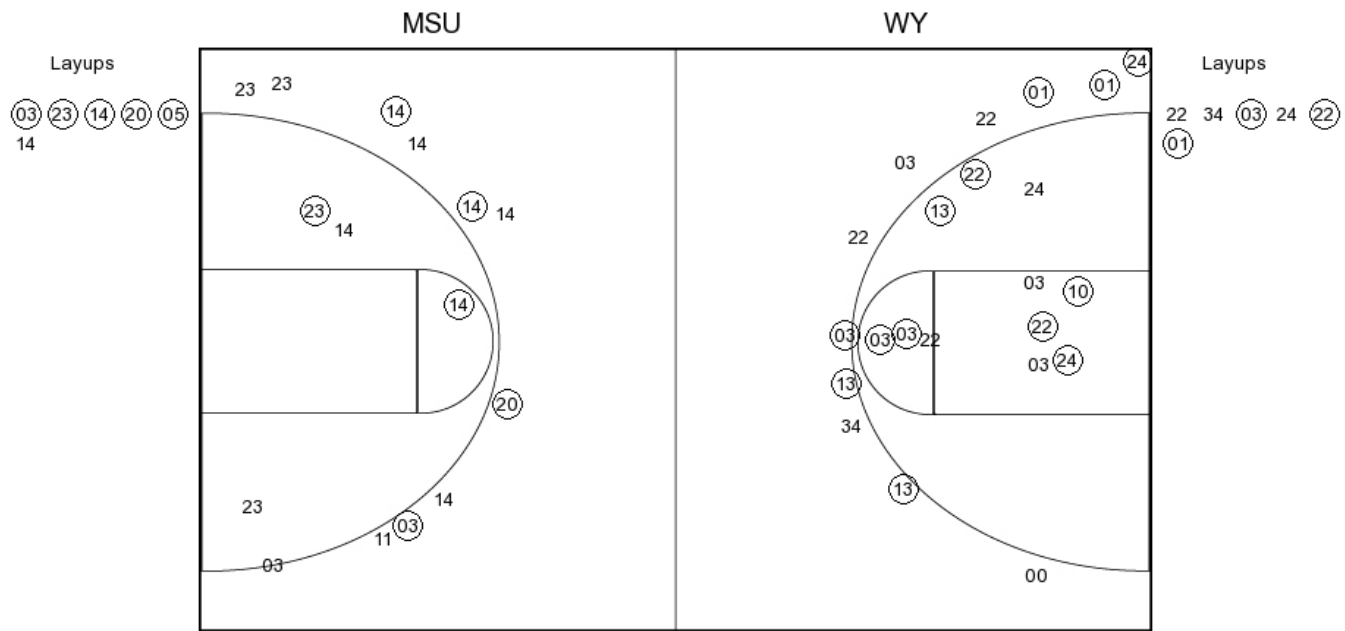
X

Montana State vs Wyoming

OFFICIAL SHOT CHART

11/25/2015 at Laramie, Wyo. (Arena-Auditorium)

PERIOD 1



MSU PERIOD 1

FG Made	16
FG Attempted	28
3PFG Made	6
3PFG Attempted	11

WY PERIOD 1

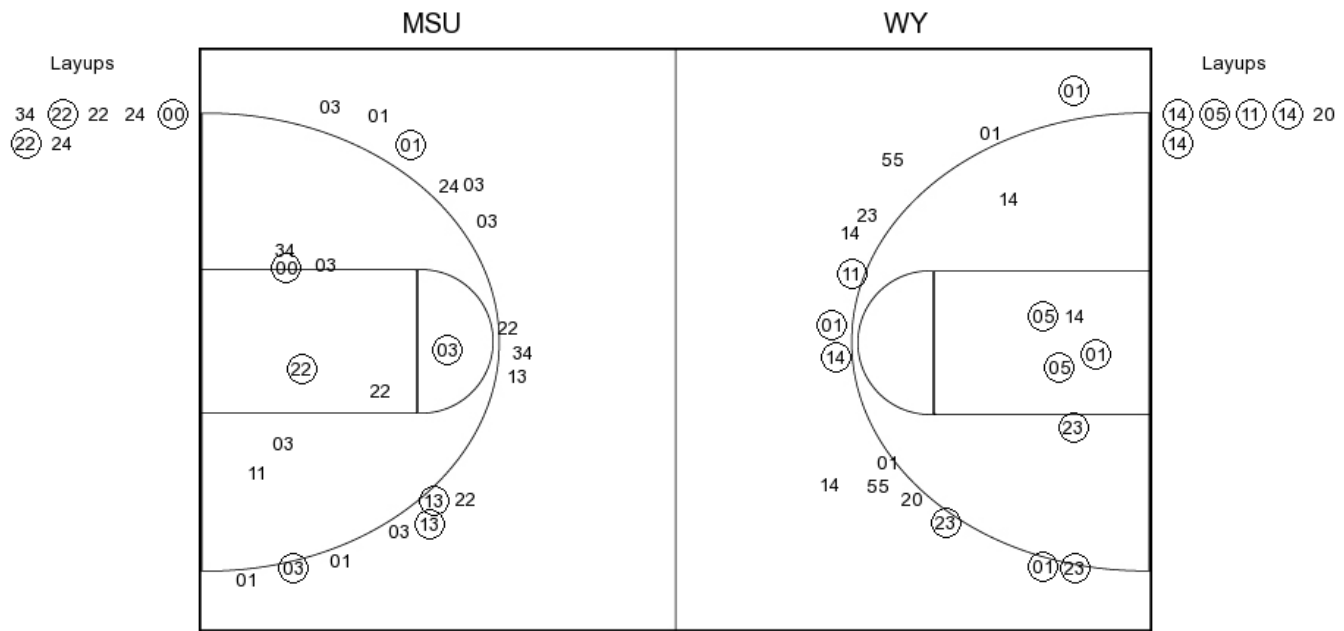
FG Made	11
FG Attempted	25
3PFG Made	4
3PFG Attempted	11

Montana State vs Wyoming

OFFICIAL SHOT CHART

11/25/2015 at Laramie, Wyo. (Arena-Auditorium)

PERIOD 2



MSU PERIOD 2

FG Made	10
FG Attempted	31
3PFG Made	4
3PFG Attempted	16

WY PERIOD 2

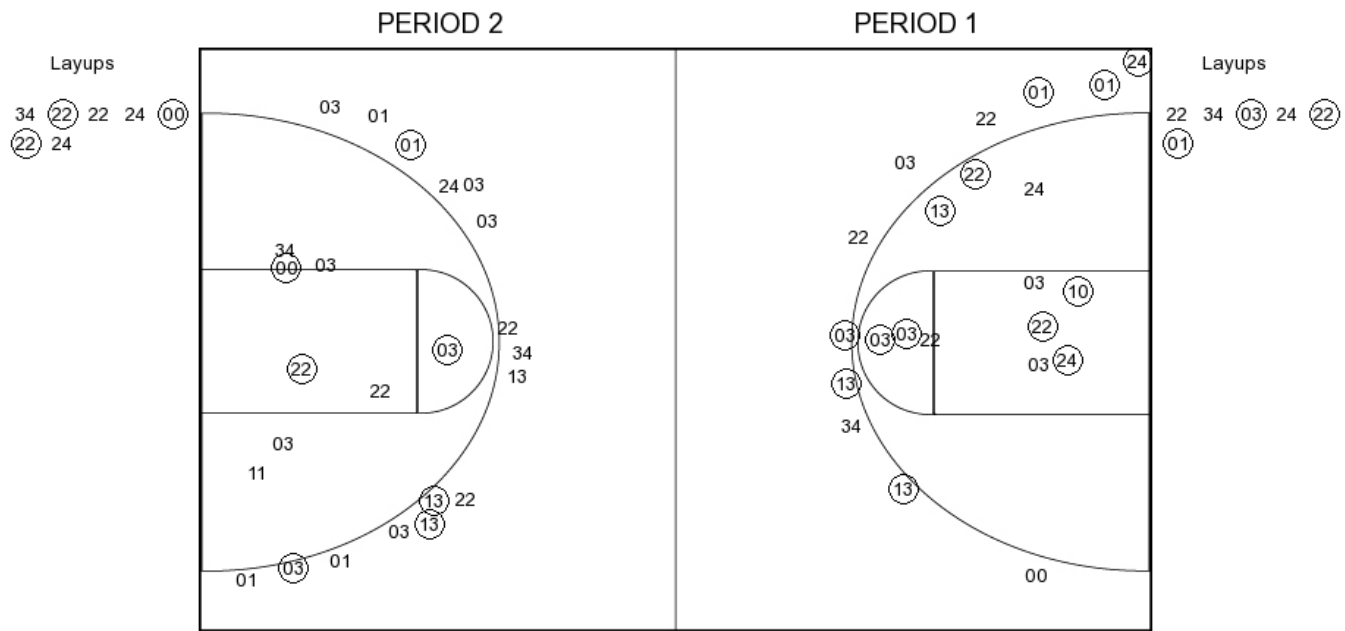
FG Made	16
FG Attempted	28
3PFG Made	7
3PFG Attempted	15

Montana State vs Wyoming

OFFICIAL SHOT CHART

11/25/2015 at Laramie, Wyo. (Arena-Auditorium)

Montana State



MSU PERIOD 1

FG Made	16
FG Attempted	28
3PFG Made	6
3PFG Attempted	11

MSU PERIOD 2

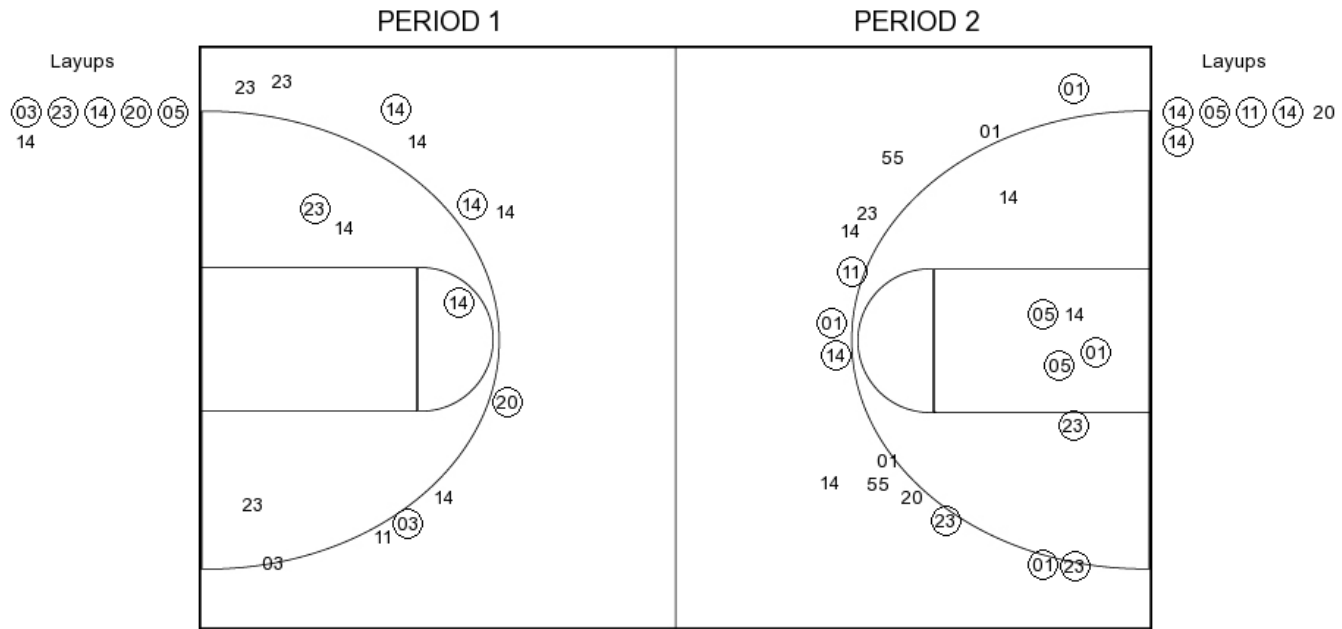
FG Made	10
FG Attempted	31
3PFG Made	4
3PFG Attempted	16

Montana State vs Wyoming

OFFICIAL SHOT CHART

11/25/2015 at Laramie, Wyo. (Arena-Auditorium)

Wyoming



WY PERIOD 1

FG Made	11
FG Attempted	25
3PFG Made	4
3PFG Attempted	11

WY PERIOD 2

FG Made	16
FG Attempted	28
3PFG Made	7
3PFG Attempted	15