

KANSAS VS SAN DIEGO STATE



12/22/2015

Steve Fisher Court at Viejas Arena

FINAL STATS

KANSAS

(10-1)

70

SAN DIEGO STATE

(7-6)

57

Start Time: 8:13 pm PST

Officials: John Higgins, Gerry Pollard, Rod Dixon

Attendance: 12414

Official Basketball Box Score -- Game Totals -- Final Statistics
KANSAS vs SAN DIEGO STATE
12/22/2015 8:13 pm PST at Steve Fisher Court at Viejas Arena

KANSAS 70 - 10-1

##	Player	S	Total		3-Ptr	Rebounds			PF	TP	A	TO	Blk	Stl	Min
			FG-FGA	3PT FG-FGA	FT-FTA	Off Reb	Def Reb	Tot Reb							
00	MASON III,FRANK	g	5-12	2-3	0-0	2	2	4	2	12	3	1	0	1	30
01	SELDEN JR.,WAYNE	g	3-6	1-2	3-3	0	3	3	3	10	1	1	0	1	22
04	GRAHAM,DEVONTE'	g	4-10	2-6	0-0	0	3	3	2	10	3	1	0	2	34
34	ELLIS,PERRY	f	8-15	2-3	2-2	3	0	3	1	20	3	5	2	0	35
42	MICKELSON,HUNTER	f	1-3	0-0	0-0	1	2	3	2	2	1	0	2	0	8
10	MYKHAILIUK,SVI		0-2	0-2	0-0	0	0	0	0	0	1	0	0	0	7
13	DIALLO,CHEICK		2-3	0-0	0-0	0	3	3	1	4	0	0	0	1	9
14	GREENE,BRANNEN		1-3	1-3	1-2	0	4	4	1	4	1	1	1	1	26
15	BRAGG JR.,CARLTON		1-3	0-0	0-0	1	0	1	0	2	0	0	1	0	6
31	TRAYLOR,JAMARI		1-4	0-0	4-4	4	2	6	3	6	0	0	1	3	21
33	LUCAS,LANDEN		0-0	0-0	0-0	1	0	1	1	0	0	0	0	0	2
TEAM						1	1	2	0		0				
TOTALS			26-61	8-19	10-11	13	20	33	16	70	13	9	7	9	200

FG % 1st Half: 17-37 45.9% 2nd Half: 9-24 37.5% Game: 26-61 42.6% Deadball
 3FG % 1st Half: 5-12 41.7% 2nd Half: 3-7 42.9% Game: 8-19 42.1% Rebounds
 FT % 1st Half: 0-0 0% 2nd Half: 10-11 90.9% Game: 10-11 90.9% 2,1

SAN DIEGO STATE 57 - 7-6

##	Player	S	Total		3-Ptr	Rebounds			PF	TP	A	TO	Blk	Stl	Min
			FG-FGA	3PT FG-FGA	FT-FTA	Off Reb	Def Reb	Tot Reb							
00	SPENCER,SKYLAR	f	3-4	0-0	0-0	2	5	7	2	6	0	3	0	1	33
12	KELL,TREY	g	1-6	1-2	3-3	1	4	5	0	6	2	1	0	2	26
13	SHEPARD,WINSTON	f	3-8	0-0	3-6	4	2	6	1	9	2	2	0	0	26
14	CHEATHAM,ZYLAN	f	5-8	0-1	2-5	3	5	8	2	12	4	2	1	1	29
42	HEMSLEY,JEREMY	g	4-12	0-1	2-2	1	0	1	2	10	2	4	0	1	29
03	CHOL,ANGELO		1-5	0-0	0-0	1	0	1	1	2	0	0	0	0	7
04	ALLEN,DAKARAI		0-1	0-0	2-2	1	0	1	2	2	0	0	0	0	16
11	WILLIAMS,D'ERRYL		0-1	0-0	0-0	0	1	1	0	0	0	0	0	0	2
15	PEREZ,BEN		3-6	2-3	0-0	1	0	1	1	8	0	0	0	0	21
21	POPE,MALIK		0-3	0-1	2-2	0	2	2	0	2	0	2	2	1	11
TEAM						1	1	2	0		1				
TOTALS			20-54	3-8	14-20	15	20	35	11	57	10	15	3	6	200

FG % 1st Half: 10-28 35.7% 2nd Half: 10-26 38.5% Game: 20-54 37.0% Deadball
 3FG % 1st Half: 3-7 42.9% 2nd Half: 0-1 00.0% Game: 3-8 37.5% Rebounds
 FT % 1st Half: 4-5 80.0% 2nd Half: 10-15 66.7% Game: 14-20 70.0% 4,1

Officials: John Higgins, Gerry Pollard, Rod Dixon
 Technical Fouls: KANSAS- None. SAN DIEGO STATE- None.
 Attendance: 12414

Score by periods	1st	2nd	Total
KANSAS	39	31	70
SAN DIEGO STATE	27	30	57

Points	In Paint	Off T/O	2nd 2nd Chance	Fast Fast Break	Bench
KU	24	15	10	6	16
SDSU	28	14	10	6	14

Last FG - KU 2nd-00:53, SDSU 2nd-00:10.
 Largest lead - KANSAS by 17 2nd-07:27; SAN DIEGO STATE by 4
 KU led for 38:11. SDSU led for 0:00. Game was tied for 1:42.

Score tied - 1 times
 Lead changed - 0 times

Official Basketball Box Score -- Game Totals -- First Half Statistics
KANSAS vs SAN DIEGO STATE
12/22/2015 8:13 pm PST at Steve Fisher Court at Viejas Arena

KANSAS 39 • 10-1

##	Player	S	Total			Rebounds			PF	TP	A	TO	Blk	Stl	Min
			FG-FGA	3PT FG-FGA	FT-FTA	Off Reb	Def Reb	Tot Reb							
00	MASON III,FRANK	g	4-9	2-3	0-0	2	2	4	0	10	3	0	0	0	19
01	SELDEN JR.,WAYNE	g	0-1	0-0	0-0	0	0	0	2	0	0	0	0	2	
04	GRAHAM,DEVONTE'	g	3-5	1-3	0-0	0	3	3	1	7	2	0	0	17	
34	ELLIS,PERRY	f	6-11	2-3	0-0	2	0	2	0	14	3	1	1	17	
42	MICKELSON,HUNTER	f	1-3	0-0	0-0	1	1	2	1	2	1	0	2	5	
10	MYKHAILIUK,SVI		0-2	0-2	0-0	0	0	0	0	0	1	0	0	7	
13	DIALLO,CHEICK		2-2	0-0	0-0	0	2	2	0	4	0	0	0	6	
14	GREENE,BRANNEN		0-1	0-1	0-0	0	3	3	0	0	0	1	1	15	
15	BRAGG JR.,CARLTON		1-2	0-0	0-0	1	0	1	0	2	0	0	1	4	
31	TRAYLOR,JAMARI		0-1	0-0	0-0	1	0	1	1	0	0	0	1	6	
33	LUCAS,LANDEN		0-0	0-0	0-0	1	0	1	1	0	0	0	0	2	
TEAM						1	1	2	0		0				
Totals			17-37	5-12	0-0	9	12	21	6	39	10	2	6	2	100

FG % Half: 17-37 45.9%
 3FG % Half: 5-12 41.7%
 FT % Half: 0-0 0%

SAN DIEGO STATE 27 • 7-6

##	Player	S	Total			Rebounds			PF	TP	A	TO	Blk	Stl	Min
			FG-FGA	3PT FG-FGA	FT-FTA	Off Reb	Def Reb	Tot Reb							
00	SPENCER,SKYLAR	f	0-1	0-0	0-0	1	2	3	0	0	0	1	0	0	15
12	KELL,TREY	g	1-3	1-2	3-3	1	2	3	0	6	0	1	0	0	13
13	SHEPARD,WINSTON	f	0-1	0-0	1-2	0	1	1	0	1	1	1	0	9	
14	CHEATHAM,ZYLAN	f	2-4	0-1	0-0	2	2	4	0	4	0	2	1	14	
42	HEMSLEY,JEREMY	g	3-8	0-1	0-0	1	0	1	0	6	1	1	0	13	
03	CHOL,ANGELO		1-3	0-0	0-0	0	0	0	0	2	0	0	0	5	
04	ALLEN,DAKARAI		0-1	0-0	0-0	0	0	0	1	0	0	0	0	11	
11	WILLIAMS,D'ERRYL		0-1	0-0	0-0	0	1	1	0	0	0	0	0	2	
15	PEREZ,BEN		3-5	2-2	0-0	0	0	0	1	8	0	0	0	12	
21	POPE,MALIK		0-1	0-1	0-0	0	1	1	0	0	0	0	1	6	
TEAM						1	0	1	0		0				
Totals			10-28	3-7	4-5	6	9	15	2	27	2	6	2	1	100

FG % Half: 10-28 35.7%
 3FG % Half: 3-7 42.9%
 FT % Half: 4-5 80.0%

Officials: John Higgins, Gerry Pollard, Rod Dixon
 Technical Fouls: KANSAS- None. SAN DIEGO STATE- None.

Score by periods	1st	2nd	Total
KANSAS	39	31	70
SAN DIEGO STATE	27	30	57

Points	In Paint	Off T/O	2nd 2nd Chance	Fast Fast Break	Bench
KU	12	5	6	2	6
SDSU	14	2	4	2	10

Last FG - KU 1st-01:11, SDSU 1st-00:41.
 KU led for 18:11. SDSU led for 0:00. Game was tied for 1:42.

Score tied - 2 times
 Lead changed - 0 times

KANSAS vs SAN DIEGO STATE
12/22/2015; 8:13 pm PST at Steve Fisher Court at Viejas Arena
Period 1 Play-By-Play

VISITORS: KANSAS	Time	Score	Margin	HOME: SAN DIEGO STATE
	19:35			TURNOVER by SPENCER,SKYLAR
MISSED JUMPER by SELDEN JR.,WAYNE	19:21			
	19:21			REBOUND (DEF) by KELL,TREY
FOUL by GRAHAM,DEVONTE'	19:13			
	19:10			MISSED JUMPER by HEMSLEY,JEREMY
REBOUND (DEF) by MICKELSON,HUNTER	19:10			
MISSED JUMPER by MASON III,FRANK	19:03			
	19:03			BLOCK by CHEATHAM,ZYLAN
REBOUND (OFF) by MASON III,FRANK	19:00			
MISSED JUMPER by MICKELSON,HUNTER	18:53			
REBOUND (OFF) by MICKELSON,HUNTER	18:53			
MISSED JUMPER by MICKELSON,HUNTER	18:46			
	18:46			REBOUND (DEF) by SPENCER,SKYLAR
FOUL by SELDEN JR.,WAYNE	18:40			
	18:38			MISSED JUMPER by KELL,TREY
REBOUND (DEF) by MASON III,FRANK	18:38			
MISSED LAYUP by MASON III,FRANK	18:33			
REBOUND (OFF) by ELLIS,PERRY	18:33			
GOOD! TIPIN by ELLIS,PERRY [PNT]	18:30	0-2	V 2	
	18:14	2-2	T	GOOD! LAYUP by CHEATHAM,ZYLAN [PNT]
	18:14			ASSIST by SHEPARD,WINSTON
GOOD! JUMPER by GRAHAM,DEVONTE'	18:02	2-4	V 2	
ASSIST by ELLIS,PERRY	18:02			
FOUL by SELDEN JR.,WAYNE	17:39			
	17:39			MISSED FT by SHEPARD,WINSTON
	17:39			REBOUND (DEADB) by TEAM
	17:39	3-4	V 1	GOOD! FT by SHEPARD,WINSTON
SUB IN: GREENE,BRANNEN	17:39			
MISSED JUMPER by ELLIS,PERRY	17:26			
	17:26			REBOUND (DEF) by CHEATHAM,ZYLAN
	17:14			MISSED JUMPER by SPENCER,SKYLAR
BLOCK by MICKELSON,HUNTER	17:14			
REBOUND (DEF) by MASON III,FRANK	17:11			
GOOD! LAYUP by MICKELSON,HUNTER [FB/PNT]	17:06	3-6	V 3	
ASSIST by MASON III,FRANK	17:06			
	16:47			TURNOVER by KELL,TREY
STEAL by GRAHAM,DEVONTE'	16:46			
GOOD! JUMPER by ELLIS,PERRY	16:37	3-8	V 5	
ASSIST by MASON III,FRANK	16:37			
FOUL by MICKELSON,HUNTER	16:07			
	16:07	4-8	V 4	GOOD! FT by KELL,TREY
	16:07	5-8	V 3	GOOD! FT by KELL,TREY
	16:07	6-8	V 2	GOOD! FT by KELL,TREY
GOOD! 3PTR by ELLIS,PERRY	15:51	6-11	V 5	
ASSIST by MICKELSON,HUNTER	15:51			
	15:36			MISSED JUMPER by HEMSLEY,JEREMY
REBOUND (DEF) by GREENE,BRANNEN	15:36			
TURNOVER by GREENE,BRANNEN	15:31			
	15:31			TIMEOUT MEDIA
	15:31			SUB IN: ALLEN,DAKARAI
	15:31			SUB IN: CHOL,ANGELO
	15:31			SUB OUT: SPENCER,SKYLAR
	15:31			SUB OUT: SHEPARD,WINSTON

VISITORS: KANSAS	Time	Score	Margin	HOME: SAN DIEGO STATE
	15:20			MISSED LAYUP by CHOL,ANGELO
BLOCK by MICKELSON,HUNTER	15:20			
	15:18			REBOUND (OFF) by KELL,TREY
	15:09			MISSED 3PTR by HEMSLEY,JEREMY
REBOUND (DEF) by TEAM	15:09			
	14:44			FOUL by ALLEN,DAKARAI
SUB IN: BRAGG JR.,CARLTON	14:44			
SUB OUT: MICKELSON,HUNTER	14:44			
GOOD! 3PTR by MASON III,FRANK	14:40	6-14	V 8	
	14:15			TURNOVER by CHEATHAM,ZYLAN
	14:15			SUB IN: POPE,MALIK
	14:15			SUB IN: PEREZ,BEN
	14:15			SUB OUT: CHEATHAM,ZYLAN
	14:15			SUB OUT: HEMSLEY,JEREMY
GOOD! 3PTR by MASON III,FRANK	14:08	6-17	V 11	
	13:49	9-17	V 8	GOOD! 3PTR by KELL,TREY
MISSED JUMPER by ELLIS,PERRY	13:29			
	13:29			REBOUND (DEF) by POPE,MALIK
	13:15	11-17	V 6	GOOD! JUMPER by CHOL,ANGELO [PNT]
GOOD! LAYUP by ELLIS,PERRY [PNT]	12:43	11-19	V 8	
ASSIST by MASON III,FRANK	12:43			
	12:14			MISSED LAYUP by CHOL,ANGELO
BLOCK by BRAGG JR.,CARLTON	12:14			
	12:13			REBOUND (OFF) by TEAM
	12:13			MISSED JUMPER by ALLEN,DAKARAI
BLOCK by GREENE,BRANNEN	12:13			
SUB IN: MYKHAILIUK,SVI	12:13			
SUB OUT: GRAHAM,DEVONTE'	12:13			
REBOUND (DEF) by GREENE,BRANNEN	12:11			
	12:10			SUB IN: HEMSLEY,JEREMY
	12:10			SUB OUT: KELL,TREY
MISSED JUMPER by BRAGG JR.,CARLTON	11:50			
REBOUND (OFF) by TEAM	11:50			
TIMEOUT media	11:45			
MISSED JUMPER by MASON III,FRANK	11:43			
REBOUND (OFF) by BRAGG JR.,CARLTON	11:43			
	11:39			FOUL by PEREZ,BEN
GOOD! LAYUP by BRAGG JR.,CARLTON [PNT]	11:30	11-21	V 10	
ASSIST by ELLIS,PERRY	11:30			
	11:16			TURNOVER by HEMSLEY,JEREMY
MISSED 3PTR by MYKHAILIUK,SVI	11:03			
REBOUND (OFF) by ELLIS,PERRY	11:03			
TURNOVER by ELLIS,PERRY	10:56			
	10:54			STEAL by POPE,MALIK
	10:52	13-21	V 8	GOOD! LAYUP by PEREZ,BEN [FB/PNT]
	10:52			ASSIST by HEMSLEY,JEREMY
SUB IN: TRAYLOR,JAMARI	10:32			
SUB OUT: BRAGG JR.,CARLTON	10:32			
	10:32			SUB IN: SPENCER,SKYLAR
	10:32			SUB IN: SHEPARD,WINSTON
	10:32			SUB OUT: ALLEN,DAKARAI
	10:32			SUB OUT: CHOL,ANGELO
MISSED JUMPER by ELLIS,PERRY	10:21			
REBOUND (OFF) by TRAYLOR,JAMARI	10:21			
MISSED LAYUP by TRAYLOR,JAMARI	10:19			
	10:19			BLOCK by POPE,MALIK
REBOUND (OFF) by MASON III,FRANK	10:17			
GOOD! JUMPER by ELLIS,PERRY	10:11	13-23	V 10	

VISITORS: KANSAS	Time	Score	Margin	HOME: SAN DIEGO STATE
ASSIST by MYKHAILIUK,SVI	10:11			
	09:44			MISSED JUMPER by HEMSLEY,JEREMY
REBOUND (DEF) by GREENE,BRANNEN	09:44			
SUB IN: GRAHAM,DEVONTE'	09:34			
SUB OUT: MASON III,FRANK	09:34			
	09:34			SUB IN: KELL,TREY
	09:34			SUB OUT: HEMSLEY,JEREMY
MISSED 3PTR by MYKHAILIUK,SVI	09:22			
	09:22			REBOUND (DEF) by SHEPARD,WINSTON
	09:04			MISSED 3PTR by POPE,MALIK
REBOUND (DEF) by GRAHAM,DEVONTE'	09:04			
GOOD! 3PTR by ELLIS,PERRY	08:56	13-26	V 13	
ASSIST by GRAHAM,DEVONTE'	08:56			
	08:38			MISSED JUMPER by SHEPARD,WINSTON
REBOUND (DEF) by GRAHAM,DEVONTE'	08:38			
MISSED LAYUP by ELLIS,PERRY	08:32			
	08:32			REBOUND (DEF) by SPENCER,SKYLAR
	08:20	16-26	V 10	GOOD! 3PTR by PEREZ,BEN
TIMEOUT media	07:55			
SUB IN: DIALLO,CHEICK	07:55			
SUB IN: MASON III,FRANK	07:55			
SUB OUT: ELLIS,PERRY	07:55			
SUB OUT: MYKHAILIUK,SVI	07:55			
	07:55			SUB IN: CHEATHAM,ZYLAN
	07:55			SUB OUT: POPE,MALIK
MISSED 3PTR by GRAHAM,DEVONTE'	07:49			
	07:49			REBOUND (DEF) by KELL,TREY
	07:26			MISSED 3PTR by KELL,TREY
	07:26			REBOUND (OFF) by CHEATHAM,ZYLAN
	07:15			MISSED 3PTR by CHEATHAM,ZYLAN
BLOCK by TRAYLOR,JAMARI	07:15			
REBOUND (DEF) by DIALLO,CHEICK	07:14			
GOOD! JUMPER by MASON III,FRANK [PNT]	07:06	16-28	V 12	
	06:37	19-28	V 9	GOOD! 3PTR by PEREZ,BEN
GOOD! 3PTR by GRAHAM,DEVONTE'	06:08	19-31	V 12	
	05:41			TURNOVER by SHEPARD,WINSTON
STEAL by TRAYLOR,JAMARI	05:40			
	05:40			SUB IN: ALLEN,DAKARAI
	05:40			SUB OUT: SHEPARD,WINSTON
MISSED 3PTR by GREENE,BRANNEN	05:16			
	05:16			REBOUND (DEF) by CHEATHAM,ZYLAN
	05:05			MISSED JUMPER by CHEATHAM,ZYLAN
REBOUND (DEF) by DIALLO,CHEICK	05:05			
GOOD! JUMPER by DIALLO,CHEICK	04:56	19-33	V 14	
ASSIST by GRAHAM,DEVONTE'	04:56			
FOUL by TRAYLOR,JAMARI	04:31			
SUB IN: ELLIS,PERRY	04:31			
SUB IN: MYKHAILIUK,SVI	04:31			
SUB OUT: TRAYLOR,JAMARI	04:31			
SUB OUT: GREENE,BRANNEN	04:31			
	04:31			SUB IN: HEMSLEY,JEREMY
	04:31			SUB OUT: KELL,TREY
	04:30			MISSED JUMPER by PEREZ,BEN
REBOUND (DEF) by GRAHAM,DEVONTE'	04:30			
	04:04			SUB IN: WILLIAMS,D'ERRYL
	04:04			SUB OUT: PEREZ,BEN
GOOD! JUMPER by MASON III,FRANK	04:02	19-35	V 16	
ASSIST by ELLIS,PERRY	04:02			

VISITORS: KANSAS	Time	Score	Margin	HOME: SAN DIEGO STATE
	03:38	21-35	V 14	GOOD! LAYUP by HEMSLEY,JEREMY [PNT]
GOOD! JUMPER by DIALLO,CHEICK	03:17	21-37	V 16	
	02:45			MISSED LAYUP by HEMSLEY,JEREMY
BLOCK by ELLIS,PERRY	02:45			
	02:42			REBOUND (OFF) by CHEATHAM,ZYLAN
	02:40	23-37	V 14	GOOD! LAYUP by CHEATHAM,ZYLAN [PNT]
MISSED 3PTR by GRAHAM,DEVONTE'	02:26			
	02:26			REBOUND (DEF) by WILLIAMS,D'ERRYL
	02:11			MISSED JUMPER by WILLIAMS,D'ERRYL
	02:11			REBOUND (OFF) by SPENCER,SKYLAR
	02:05			TIMEOUT MEDIA
SUB IN: LUCAS,LANDEN	02:05			
SUB IN: GREENE,BRANNEN	02:05			
SUB OUT: DIALLO,CHEICK	02:05			
SUB OUT: MYKHAILIUK,SVI	02:05			
	02:05			SUB IN: PEREZ,BEN
	02:05			SUB OUT: WILLIAMS,D'ERRYL
	02:02			TURNOVER by CHEATHAM,ZYLAN
MISSED 3PTR by MASON III,FRANK	01:48			
	01:48			REBOUND (DEADB) by TEAM
FOUL by LUCAS,LANDEN	01:45			
	01:31	25-37	V 12	GOOD! JUMPER by HEMSLEY,JEREMY [PNT]
GOOD! JUMPER by GRAHAM,DEVONTE' [PNT]	01:11	25-39	V 14	
	01:04			TIMEOUT 30SEC
	00:51			MISSED JUMPER by PEREZ,BEN
	00:51			REBOUND (OFF) by HEMSLEY,JEREMY
	00:41	27-39	V 12	GOOD! LAYUP by HEMSLEY,JEREMY [PNT]
TIMEOUT 30SEC	00:26			
	00:26			SUB IN: KELL,TREY
	00:26			SUB OUT: PEREZ,BEN
MISSED 3PTR by ELLIS,PERRY	00:08			
REBOUND (OFF) by LUCAS,LANDEN	00:08			
MISSED JUMPER by MASON III,FRANK	00:01			
REBOUND (DEADB) by TEAM	00:01			

KANSAS 39, SAN DIEGO STATE 27

Period 1-only	In Paint	Off T/O	2nd Chance	Fast Break	Bench	
KU	12	5	6	2	6	Score tied - 0 times
SDSU	14	2	4	2	10	Lead changed - 0 times

Official Basketball Box Score -- Game Totals -- Second Half Statistics
KANSAS vs SAN DIEGO STATE
12/22/2015 8:13 pm PST at Steve Fisher Court at Viejas Arena

KANSAS 31 • 10-1

##	Player	S	Total			Rebounds			PF	TP	A	TO	Blk	Stl	Min
			FG-FGA	3PT	FG-FGA	FT-FTA	Off Reb	Def Reb							
00	MASON III,FRANK	g	1-3	0-0	0-0	0	0	0	2	2	0	1	0	1	11
01	SELDEN JR.,WAYNE	g	3-5	1-2	3-3	0	3	3	1	10	1	1	0	1	20
04	GRAHAM,DEVONTE'	g	1-5	1-3	0-0	0	0	0	1	3	1	1	0	1	17
34	ELLIS,PERRY	f	2-4	0-0	2-2	1	0	1	1	6	0	4	1	0	18
42	MICKELSON,HUNTER	f	0-0	0-0	0-0	0	1	1	1	0	0	0	0	0	3
10	MYKHAILIUK,SVI		0-0	0-0	0-0	0	0	0	0	0	0	0	0	0	0
13	DIALLO,CHEICK		0-1	0-0	0-0	0	1	1	1	0	0	0	0	1	3
14	GREENE,BRANNEN		1-2	1-2	1-2	0	1	1	1	4	1	0	0	1	11
15	BRAGG JR.,CARLTON		0-1	0-0	0-0	0	0	0	0	0	0	0	0	0	2
31	TRAYLOR,JAMARI		1-3	0-0	4-4	3	2	5	2	6	0	0	0	2	15
33	LUCAS,LANDEN		0-0	0-0	0-0	0	0	0	0	0	0	0	0	0	0
TEAM						0	0	0	0			0			
Totals			9-24	3-7	10-11	4	8	12	10	31	3	7	1	7	100

FG % Half: 9-24 37.5%
 3FG % Half: 3-7 41.7%
 FT % Half: 10-11 90.9%

SAN DIEGO STATE 30 • 7-6

##	Player	S	Total			Rebounds			PF	TP	A	TO	Blk	Stl	Min
			FG-FGA	3PT	FG-FGA	FT-FTA	Off Reb	Def Reb							
00	SPENCER,SKYLAR	f	3-3	0-0	0-0	1	3	4	2	6	0	2	0	1	18
12	KELL,TREY	g	0-3	0-0	0-0	0	2	2	0	0	2	0	0	2	13
13	SHEPARD,WINSTON	f	3-7	0-0	2-4	4	1	5	1	8	1	1	0	0	17
14	CHEATHAM,ZYLAN	f	3-4	0-0	2-5	1	3	4	2	8	4	0	0	1	15
42	HEMSLEY,JEREMY	g	1-4	0-0	2-2	0	0	0	2	4	1	3	0	1	16
03	CHOL,ANGELO		0-2	0-0	0-0	1	0	1	1	0	0	0	0	0	2
04	ALLEN,DAKARAI		0-0	0-0	2-2	1	0	1	1	2	0	0	0	0	5
11	WILLIAMS,D'ERRYL		0-0	0-0	0-0	0	0	0	0	0	0	0	0	0	0
15	PEREZ,BEN		0-1	0-1	0-0	1	0	1	0	0	0	0	0	0	9
21	POPE,MALIK		0-2	0-0	2-2	0	1	1	0	2	0	2	1	0	5
TEAM						0	1	1	0			1			
Totals			10-26	0-1	10-15	9	11	20	9	30	8	9	1	5	100

FG % Half: 10-26 38.5%
 3FG % Half: 0-1 42.9%
 FT % Half: 10-15 66.7%

Officials: John Higgins, Gerry Pollard, Rod Dixon
 Technical Fouls: KANSAS- None. SAN DIEGO STATE- None.

Score by periods	1st	2nd	Total
KANSAS	39	31	70
SAN DIEGO STATE	27	30	57

Points	In Paint	Off T/O	2nd 2nd Chance	Fast Fast Break	Bench
KU	12	10	4	4	10
SDSU	14	12	6	4	4

Last FG - KU 2nd-00:53, SDSU 2nd-00:10.
 KU led for 20:00. SDSU led for 0:00. Game was tied for 0:00.

Score tied - 0 times
 Lead changed - 0 times

KANSAS vs SAN DIEGO STATE
12/22/2015; 8:13 pm PST at Steve Fisher Court at Viejas Arena
Period 2 Play-By-Play

VISITORS: KANSAS	Time	Score	Margin	HOME: SAN DIEGO STATE
MISSED JUMPER by GRAHAM,DEVONTE'	19:46			
	19:46			REBOUND (DEF) by SPENCER,SKYLAR
	19:28			MISSED JUMPER by CHEATHAM,ZYLAN
BLOCK by ELLIS,PERRY	19:28			
REBOUND (DEF) by SELDEN JR.,WAYNE	19:26			
	19:23			FOUL by HEMSLEY,JEREMY
MISSED JUMPER by MASON III,FRANK	19:17			
	19:17			REBOUND (DEF) by CHEATHAM,ZYLAN
	19:09	29-39	V 10	GOOD! DUNK by SPENCER,SKYLAR [FB/PNT]
	19:09			ASSIST by CHEATHAM,ZYLAN
TURNOVER by SELDEN JR.,WAYNE	18:43			
	18:42			STEAL by KELL,TREY
	18:40	31-39	V 8	GOOD! DUNK by CHEATHAM,ZYLAN [FB/PNT]
	18:40			ASSIST by KELL,TREY
	18:12			FOUL by SPENCER,SKYLAR
GOOD! FT by ELLIS,PERRY	18:12	31-40	V 9	
GOOD! FT by ELLIS,PERRY	18:12	31-41	V 10	
FOUL by MICKELSON,HUNTER	17:59			
	17:59			MISSED FT by CHEATHAM,ZYLAN
	17:59			REBOUND (DEADB) by TEAM
	17:59			MISSED FT by CHEATHAM,ZYLAN
REBOUND (DEF) by MICKELSON,HUNTER	17:59			
TURNOVER by ELLIS,PERRY	17:42			
	17:33	33-41	V 8	GOOD! JUMPER by SHEPARD,WINSTON
	17:33			ASSIST by HEMSLEY,JEREMY
TIMEOUT 30SEC	17:24			
SUB IN: TRAYLOR,JAMARI	17:24			
SUB OUT: MICKELSON,HUNTER	17:24			
MISSED JUMPER by TRAYLOR,JAMARI	16:56			
REBOUND (OFF) by TRAYLOR,JAMARI	16:56			
MISSED 3PTR by GRAHAM,DEVONTE'	16:51			
	16:51			REBOUND (DEF) by KELL,TREY
	16:31			TIMEOUT 30SEC
	16:22			MISSED JUMPER by SHEPARD,WINSTON
REBOUND (DEF) by SELDEN JR.,WAYNE	16:22			
TURNOVER by GRAHAM,DEVONTE'	16:09			
	16:08			STEAL by CHEATHAM,ZYLAN
	15:51	35-41	V 6	GOOD! LAYUP by SHEPARD,WINSTON [PNT]
	15:51			ASSIST by CHEATHAM,ZYLAN
GOOD! JUMPER by ELLIS,PERRY [PNT]	15:32	35-43	V 8	
	15:15			MISSED JUMPER by HEMSLEY,JEREMY
	15:15			REBOUND (OFF) by SHEPARD,WINSTON
FOUL by TRAYLOR,JAMARI	15:14			
	15:14			TIMEOUT MEDIA
	15:14	36-43	V 7	GOOD! FT by SHEPARD,WINSTON
	15:14	37-43	V 6	GOOD! FT by SHEPARD,WINSTON
	15:02			FOUL by SHEPARD,WINSTON
TURNOVER by MASON III,FRANK	15:01			
	14:59			STEAL by KELL,TREY
FOUL by ELLIS,PERRY	14:56			
	14:56	38-43	V 5	GOOD! FT by CHEATHAM,ZYLAN
	14:56	39-43	V 4	GOOD! FT by CHEATHAM,ZYLAN
TURNOVER by ELLIS,PERRY	14:40			

VISITORS: KANSAS	Time	Score	Margin	HOME: SAN DIEGO STATE
	14:39			STEAL by HEMSLEY,JEREMY
	14:37			MISSED LAYUP by HEMSLEY,JEREMY
	14:37			REBOUND (OFF) by SHEPARD,WINSTON
	14:36			MISSED DUNK by SHEPARD,WINSTON
REBOUND (DEF) by SELDEN JR.,WAYNE	14:35			
	14:35			FOUL by HEMSLEY,JEREMY
MISSED JUMPER by SELDEN JR.,WAYNE	14:21			
REBOUND (OFF) by TRAYLOR,JAMARI	14:21			
MISSED LAYUP by MASON III,FRANK	14:07			
REBOUND (OFF) by TRAYLOR,JAMARI	14:07			
	14:05			FOUL by CHEATHAM,ZYLAN
GOOD! FT by TRAYLOR,JAMARI	14:05	39-44	V 5	
GOOD! FT by TRAYLOR,JAMARI	14:05	39-45	V 6	
SUB IN: GREENE,BRANNEN	14:05			
SUB OUT: GRAHAM,DEVONTE'	14:05			
	14:05			SUB IN: PEREZ,BEN
	14:05			SUB OUT: KELL,TREY
	13:45	41-45	V 4	GOOD! DUNK by SPENCER,SKYLAR [PNT]
	13:45			ASSIST by CHEATHAM,ZYLAN
GOOD! 3PTR by SELDEN JR.,WAYNE	13:23	41-48	V 7	
FOUL by SELDEN JR.,WAYNE	12:55			
SUB IN: GRAHAM,DEVONTE'	12:55			
SUB OUT: MASON III,FRANK	12:55			
	12:47			MISSED JUMPER by HEMSLEY,JEREMY
REBOUND (DEF) by GREENE,BRANNEN	12:47			
MISSED JUMPER by TRAYLOR,JAMARI	12:35			
	12:35			REBOUND (DEF) by SPENCER,SKYLAR
	12:19			TURNOVER by SPENCER,SKYLAR
STEAL by SELDEN JR.,WAYNE	12:17			
MISSED JUMPER by ELLIS,PERRY	12:13			
	12:13			REBOUND (DEF) by SPENCER,SKYLAR
	11:39			TURNOVER by TEAM
STEAL by TRAYLOR,JAMARI	11:36			
MISSED 3PTR by GRAHAM,DEVONTE'	11:13			
REBOUND (OFF) by ELLIS,PERRY	11:13			
GOOD! LAYUP by SELDEN JR.,WAYNE [PNT]	10:44	41-50	V 9	
	10:39			TIMEOUT media
SUB IN: BRAGG JR.,CARLTON	10:39			
SUB OUT: ELLIS,PERRY	10:39			
	10:39			SUB IN: KELL,TREY
	10:39			SUB IN: ALLEN,DAKARAI
	10:39			SUB IN: POPE,MALIK
	10:39			SUB IN: CHOL,ANGELO
	10:39			SUB OUT: SPENCER,SKYLAR
	10:39			SUB OUT: PEREZ,BEN
	10:39			SUB OUT: CHEATHAM,ZYLAN
	10:39			SUB OUT: HEMSLEY,JEREMY
	10:18			TURNOVER by POPE,MALIK
GOOD! 3PTR by GREENE,BRANNEN	10:06	41-53	V 12	
ASSIST by GRAHAM,DEVONTE'	10:06			
	09:49			MISSED JUMPER by POPE,MALIK
	09:49			REBOUND (OFF) by SHEPARD,WINSTON
FOUL by GREENE,BRANNEN	09:42			
	09:35			MISSED JUMPER by KELL,TREY
REBOUND (DEF) by TRAYLOR,JAMARI	09:35			
GOOD! JUMPER by SELDEN JR.,WAYNE [FB/PNT]	09:27	41-55	V 14	
	09:27			FOUL by ALLEN,DAKARAI
GOOD! FT by SELDEN JR.,WAYNE	09:27	41-56	V 15	

VISITORS: KANSAS	Time	Score	Margin	HOME: SAN DIEGO STATE
FOUL by TRAYLOR,JAMARI	09:10			
	09:10	42-56	V 14	GOOD! FT by ALLEN,DAKARAI
	09:10	43-56	V 13	GOOD! FT by ALLEN,DAKARAI
MISSED JUMPER by BRAGG JR.,CARLTON	08:53			
	08:53			BLOCK by POPE,MALIK
	08:52			REBOUND (DEF) by SHEPARD,WINSTON
	08:39			MISSED JUMPER by CHOL,ANGELO
	08:39			REBOUND (DEADB) by TEAM
SUB IN: MASON III,FRANK	08:35			
SUB IN: ELLIS,PERRY	08:35			
SUB OUT: GRAHAM,DEVONTE'	08:35			
SUB OUT: BRAGG JR.,CARLTON	08:35			
	08:27			MISSED JUMPER by KELL,TREY
	08:27			REBOUND (OFF) by CHOL,ANGELO
	08:23			MISSED LAYUP by CHOL,ANGELO
	08:23			REBOUND (OFF) by ALLEN,DAKARAI
	08:11			MISSED JUMPER by SHEPARD,WINSTON
REBOUND (DEADB) by TEAM	08:11			
	08:11			FOUL by CHOL,ANGELO
GOOD! FT by TRAYLOR,JAMARI	08:11	43-57	V 14	
GOOD! FT by TRAYLOR,JAMARI	08:11	43-58	V 15	
	08:11			SUB IN: SPENCER,SKYLAR
	08:11			SUB IN: PEREZ,BEN
	08:11			SUB OUT: SHEPARD,WINSTON
	08:11			SUB OUT: CHOL,ANGELO
	07:52			TIMEOUT MEDIA
	07:41			MISSED JUMPER by POPE,MALIK
	07:41			REBOUND (OFF) by SPENCER,SKYLAR
	07:39			TURNOVER by SPENCER,SKYLAR
	07:38			SUB IN: HEMSLEY,JEREMY
	07:38			SUB OUT: KELL,TREY
	07:27			FOUL by SPENCER,SKYLAR
GOOD! FT by SELDEN JR.,WAYNE	07:27	43-59	V 16	
GOOD! FT by SELDEN JR.,WAYNE	07:27	43-60	V 17	
	07:09			TURNOVER by HEMSLEY,JEREMY
STEAL by TRAYLOR,JAMARI	07:08			
TURNOVER by ELLIS,PERRY	07:03			
	07:03			STEAL by SPENCER,SKYLAR
FOUL by MASON III,FRANK	06:51			
	06:51	44-60	V 16	GOOD! FT by HEMSLEY,JEREMY
	06:51	45-60	V 15	GOOD! FT by HEMSLEY,JEREMY
SUB IN: GRAHAM,DEVONTE'	06:47			
SUB OUT: MASON III,FRANK	06:47			
GOOD! DUNK by TRAYLOR,JAMARI [PNT]	06:31	45-62	V 17	
ASSIST by GREENE,BRANNEN	06:31			
	06:08			TURNOVER by POPE,MALIK
STEAL by GREENE,BRANNEN	06:07			
MISSED JUMPER by GRAHAM,DEVONTE'	05:39			
	05:39			REBOUND (DEF) by POPE,MALIK
FOUL by GRAHAM,DEVONTE'	05:35			
	05:35	46-62	V 16	GOOD! FT by POPE,MALIK
	05:35	47-62	V 15	GOOD! FT by POPE,MALIK
	05:35			SUB IN: KELL,TREY
	05:35			SUB IN: CHEATHAM,ZYLAN
	05:35			SUB IN: SHEPARD,WINSTON
	05:35			SUB OUT: PEREZ,BEN
	05:35			SUB OUT: ALLEN,DAKARAI
	05:35			SUB OUT: POPE,MALIK

VISITORS: KANSAS	Time	Score	Margin	HOME: SAN DIEGO STATE
MISSED JUMPER by ELLIS,PERRY	05:12			
	05:12			REBOUND (DEF) by TEAM
	04:53			MISSED JUMPER by KELL,TREY
REBOUND (DEF) by TRAYLOR,JAMARI	04:53			
MISSED 3PTR by GREENE,BRANNEN	04:31			
	04:31			REBOUND (DEF) by KELL,TREY
	04:16	49-62	V 13	GOOD! JUMPER by HEMSLEY,JEREMY
	04:16			ASSIST by KELL,TREY
GOOD! 3PTR by GRAHAM,DEVONTE'	03:52	49-65	V 16	
ASSIST by SELDEN JR.,WAYNE	03:52			
	03:32	51-65	V 14	GOOD! JUMPER by SHEPARD,WINSTON
MISSED 3PTR by SELDEN JR.,WAYNE	03:03			
	03:03			REBOUND (DEF) by CHEATHAM,ZYLAN
	02:55			TURNOVER by HEMSLEY,JEREMY
STEAL by GRAHAM,DEVONTE'	02:54			
	02:49			FOUL by CHEATHAM,ZYLAN
TIMEOUT MEDIA	02:49			
MISSED FT by GREENE,BRANNEN	02:49			
REBOUND (DEADB) by TEAM	02:49			
GOOD! FT by GREENE,BRANNEN	02:49	51-66	V 15	
SUB IN: DIALLO,CHEICK	02:49			
SUB IN: MASON III,FRANK	02:49			
SUB OUT: TRAYLOR,JAMARI	02:49			
SUB OUT: GREENE,BRANNEN	02:49			
	02:49			SUB IN: PEREZ,BEN
	02:49			SUB OUT: HEMSLEY,JEREMY
	02:37	53-66	V 13	GOOD! JUMPER by SPENCER,SKYLAR [PNT]
	02:37			ASSIST by CHEATHAM,ZYLAN
GOOD! LAYUP by ELLIS,PERRY [PNT]	02:08	53-68	V 15	
	01:53			MISSED 3PTR by PEREZ,BEN
	01:53			REBOUND (OFF) by SHEPARD,WINSTON
	01:46	55-68	V 13	GOOD! LAYUP by CHEATHAM,ZYLAN [PNT]
	01:46			ASSIST by SHEPARD,WINSTON
FOUL by DIALLO,CHEICK	01:46			
	01:46			MISSED FT by CHEATHAM,ZYLAN
	01:46			REBOUND (OFF) by PEREZ,BEN
	01:46			SUB IN: HEMSLEY,JEREMY
	01:46			SUB OUT: KELL,TREY
	01:35			TURNOVER by SHEPARD,WINSTON
STEAL by DIALLO,CHEICK	01:34			
MISSED JUMPER by DIALLO,CHEICK	01:05			
	01:05			REBOUND (DEF) by CHEATHAM,ZYLAN
	00:58			TURNOVER by HEMSLEY,JEREMY
STEAL by MASON III,FRANK	00:56			
GOOD! LAYUP by MASON III,FRANK [FB/PNT]	00:53	55-70	V 15	
	00:45			MISSED LAYUP by SHEPARD,WINSTON
REBOUND (DEF) by DIALLO,CHEICK	00:45			
TURNOVER by ELLIS,PERRY	00:17			
FOUL by MASON III,FRANK	00:12			
	00:12			MISSED FT by SHEPARD,WINSTON
	00:12			REBOUND (DEADB) by TEAM
	00:12			MISSED FT by SHEPARD,WINSTON
	00:12			REBOUND (OFF) by CHEATHAM,ZYLAN
	00:10	57-70	V 13	GOOD! LAYUP by CHEATHAM,ZYLAN [PNT]

KANSAS 70, SAN DIEGO STATE 57

Period 2-only	In Paint	Off T/O	2nd Chance	Fast Break	Bench	
KU	12	10	4	4	10	Score tied - 0 times
SDSU	14	12	6	4	4	Lead changed - 0 times

KANSAS vs SAN DIEGO STATE

12/22/2015; 8:13 pm PST at Steve Fisher Court at Viejas Arena

Scoring/Runs Reference

Period 1			Period 2		
KANSAS	Score	SAN DIEGO STATE	KANSAS	Score	SAN DIEGO STATE
		TO SPENCER TURN - 19:35	19:46 - GRAHAM JUMPER	X	
19:21 - SELDEN JR. JUMPER	X				CHEATHAM JUMPER - 19:28
		X HEMSLEY JUMPER - 19:10		X	
19:03 - MASON III JUMPER	X		19:17 - MASON III JUMPER	X	
18:53 - MICKELSON JUMPER	X			39-29 -10	2 ^{PF} SPENCER DUNK - 19:09
18:46 - MICKELSON JUMPER	X		18:43 - SELDEN JR. TURN	TO	
		X KELL JUMPER - 18:38		39-31 -8	2 ^{PF} CHEATHAM DUNK - 18:40
18:33 - MASON III LAYUP	X		18:12 - ELLIS FT	1	40-31 -9
18:30 - ELLIS TIPIN	2 ^P 2-0 -2		18:12 - ELLIS FT	1	41-31 -10
		2 ^P CHEATHAM LAYUP - 18:14			X CHEATHAM FT - 17:59
18:02 - GRAHAM JUMPER	2 4-2 -2				X CHEATHAM FT - 17:59
		X SHEPARD FT - 17:39	17:42 - ELLIS TURN	TO	
		4-3 -1		41-33 -8	2 SHEPARD JUMPER - 17:33
17:26 - ELLIS JUMPER	X	1 SHEPARD FT - 17:39	16:56 - TRAYLOR JUMPER	X	
		X SPENCER JUMPER - 17:14	16:51 - GRAHAM 3PTR	X	
17:06 - MICKELSON LAYUP	2 ^{PF} 6-3 -3				X SHEPARD JUMPER - 16:22
		TO KELL TURN - 16:47	16:09 - GRAHAM TURN	TO	
16:37 - ELLIS JUMPER	2 8-3 -3			41-35 -6	2 ^P SHEPARD LAYUP - 15:51
		8-4 -4	15:32 - ELLIS JUMPER	2 ^P 43-35 -8	
		1 KELL FT - 16:07			X HEMSLEY JUMPER - 15:15
		8-5 -3			1 SHEPARD FT - 15:14
		1 KELL FT - 16:07			43-36 -7
		8-6 -2			1 SHEPARD FT - 15:14
15:51 - ELLIS 3PTR	3 11-6 -5		15:01 - MASON III TURN	TO	
		X HEMSLEY JUMPER - 15:36		43-38 -5	1 CHEATHAM FT - 14:56
15:31 - GREENE TURN	TO			43-39 -4	1 CHEATHAM FT - 14:56
		X CHOL LAYUP - 15:20	14:40 - ELLIS TURN	TO	
		X HEMSLEY 3PTR - 15:09			X HEMSLEY LAYUP - 14:37
14:40 - MASON III 3PTR	3 14-6 -8				X SHEPARD DUNK - 14:36
		TO CHEATHAM TURN - 14:15	14:21 - SELDEN JR. JUMPER	X	
14:08 - MASON III 3PTR	3 17-6 -11		14:07 - MASON III LAYUP	X	
		17-9 -8			1 44-39 -5
13:29 - ELLIS JUMPER	X	3 KELL 3PTR - 13:49	14:05 - TRAYLOR FT	1	45-39 -6
			14:05 - TRAYLOR FT	1	45-41 -4
12:43 - ELLIS LAYUP	2 ^P 17-11 -6	2 ^P CHOL JUMPER - 13:15			2 ^P SPENCER DUNK - 13:45
					48-41 -7
		X CHOL LAYUP - 12:14	13:23 - SELDEN JR. 3PTR	3	
		X ALLEN JUMPER - 12:13			X HEMSLEY JUMPER - 12:47
11:50 - BRAGG JR. JUMPER	X		12:35 - TRAYLOR JUMPER	X	
11:43 - MASON III JUMPER	X				TO SPENCER TURN - 12:19
11:30 - BRAGG JR. LAYUP	2 ^P 21-11 -10		12:13 - ELLIS JUMPER	X	
		TO HEMSLEY TURN - 11:16			TO TEAM TURN - 11:39
11:03 - MYKHAILIUK 3PTR	X		11:13 - GRAHAM 3PTR	X	
10:56 - ELLIS TURN	TO				

10:21 - ELLIS JUMPER [X] 21-13 -8 2PF PEREZ LAYUP - 10:52
 10:19 - TRAYLOR LAYUP [X]
 10:11 - ELLIS JUMPER [2] 23-13 -10 [X] HEMSLEY JUMPER - 09:44
 09:22 - MYKHAILIUK 3PTR [X] [X] POPE 3PTR - 09:04
 08:56 - ELLIS 3PTR [3] 26-13 -13 [X] SHEPARD JUMPER - 08:38
 08:32 - ELLIS LAYUP [X]
 07:49 - GRAHAM 3PTR [X] 26-16 -10 3 PEREZ 3PTR - 08:20
 [X] KELL 3PTR - 07:26
 [X] CHEATHAM 3PTR - 07:15
 07:06 - MASON III JUMPER [2P] 28-16 -12 3 PEREZ 3PTR - 06:37
 06:08 - GRAHAM 3PTR [3] 31-19 -12 TO SHEPARD TURN - 05:41
 05:16 - GREENE 3PTR [X] [X] CHEATHAM JUMPER - 05:05
 04:56 - DIALLO JUMPER [2] 33-19 -14 [X] PEREZ JUMPER - 04:30
 04:02 - MASON III JUMPER [2] 35-19 -16 [2P] HEMSLEY LAYUP - 03:38
 03:17 - DIALLO JUMPER [2] 37-21 -16 [X] HEMSLEY LAYUP - 02:45
 [2P] 37-23 -14 CHEATHAM LAYUP - 02:40
 02:26 - GRAHAM 3PTR [X] [X] WILLIAMS JUMPER - 02:11
 TO CHEATHAM TURN - 02:02
 01:48 - MASON III 3PTR [X] 37-25 -12 2P HEMSLEY JUMPER - 01:31
 01:11 - GRAHAM JUMPER [2P] 39-25 -14 [X] PEREZ JUMPER - 00:51
 [2P] 39-27 -12 HEMSLEY LAYUP - 00:41
 00:08 - ELLIS 3PTR [X]
 00:01 - MASON III JUMPER [X]

10:44 - SELDEN JR. LAYUP [2P] 50-41 -9 TO POPE TURN - 10:18
 10:06 - GREENE 3PTR [3] 53-41 -12 [X] POPE JUMPER - 09:49
 [X] KELL JUMPER - 09:35
 09:27 - SELDEN JR. JUMPER [2PF] 55-41 -14
 09:27 - SELDEN JR. FT [1] 56-41 -15 [1] ALLEN FT - 09:10
 [1] 56-42 -14 [1] ALLEN FT - 09:10
 [1] 56-43 -13
 08:53 - BRAGG JR. JUMPER [X]
 [X] CHOL JUMPER - 08:39
 [X] KELL JUMPER - 08:27
 [X] CHOL LAYUP - 08:23
 [X] SHEPARD JUMPER - 08:11
 08:11 - TRAYLOR FT [1] 57-43 -14
 08:11 - TRAYLOR FT [1] 58-43 -15 [X] POPE JUMPER - 07:41
 TO SPENCER TURN - 07:39
 07:27 - SELDEN JR. FT [1] 59-43 -16
 07:27 - SELDEN JR. FT [1] 60-43 -17 TO HEMSLEY TURN - 07:09
 07:03 - ELLIS TURN TO [1] 60-44 -16 [1] HEMSLEY FT - 06:51
 [1] 60-45 -15 [1] HEMSLEY FT - 06:51
 06:31 - TRAYLOR DUNK [2P] 62-45 -17 TO POPE TURN - 06:08
 05:39 - GRAHAM JUMPER [X] [1] 62-46 -16 [1] POPE FT - 05:35
 [1] 62-47 -15 [1] POPE FT - 05:35
 05:12 - ELLIS JUMPER [X] [X] KELL JUMPER - 04:53
 04:31 - GREENE 3PTR [X] [2] 62-49 -13 HEMSLEY JUMPER - 04:16
 03:52 - GRAHAM 3PTR [3] 65-49 -16 [2] 65-51 -14 SHEPARD JUMPER - 03:32
 03:03 - SELDEN JR. 3PTR [X] TO HEMSLEY TURN - 02:55
 02:49 - GREENE FT [X]
 02:49 - GREENE FT [1] 66-51 -15 [2P] 66-53 -13 SPENCER JUMPER - 02:37
 02:08 - ELLIS LAYUP [2P] 68-53 -15 [X] PEREZ 3PTR - 01:53
 [2P] 68-55 -13 [X] CHEATHAM LAYUP - 01:46
 [X] CHEATHAM FT - 01:46
 TO SHEPARD TURN - 01:35
 01:05 - DIALLO JUMPER [X]

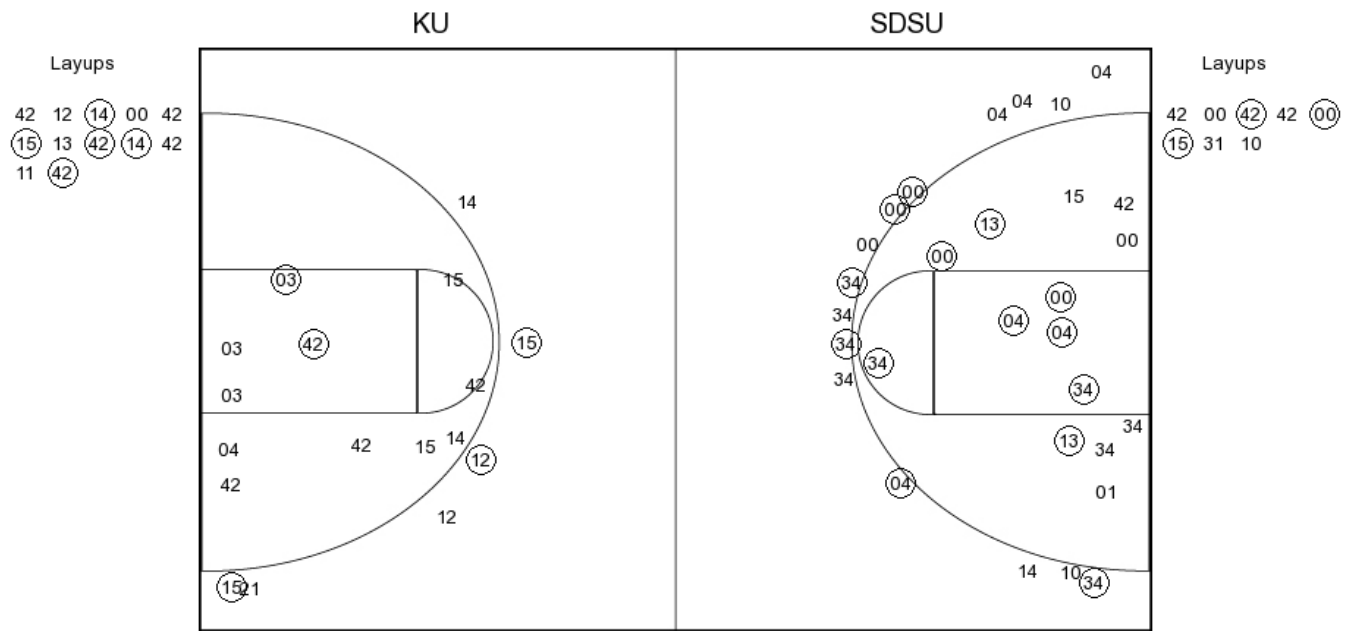
			TO	HEMSLEY TURN - 00:58
00:53 - MASON	2 ^{PF}	70-55		
III LAYUP		-15		
			X	SHEPARD LAYUP - 00:45
00:17 - ELLIS TURN			TO	
			X	SHEPARD FT - 00:12
			X	SHEPARD FT - 00:12
		70-57	2 ^P	CHEATHAM LAYUP - 00:10
		-13		

KANSAS vs SAN DIEGO STATE

OFFICIAL SHOT CHART

12/22/2015 at Steve Fisher Court at Viejas Arena

PERIOD 1



KU PERIOD 1

FG Made	17
FG Attempted	37
3PFG Made	5
3PFG Attempted	12

SDSU PERIOD 1

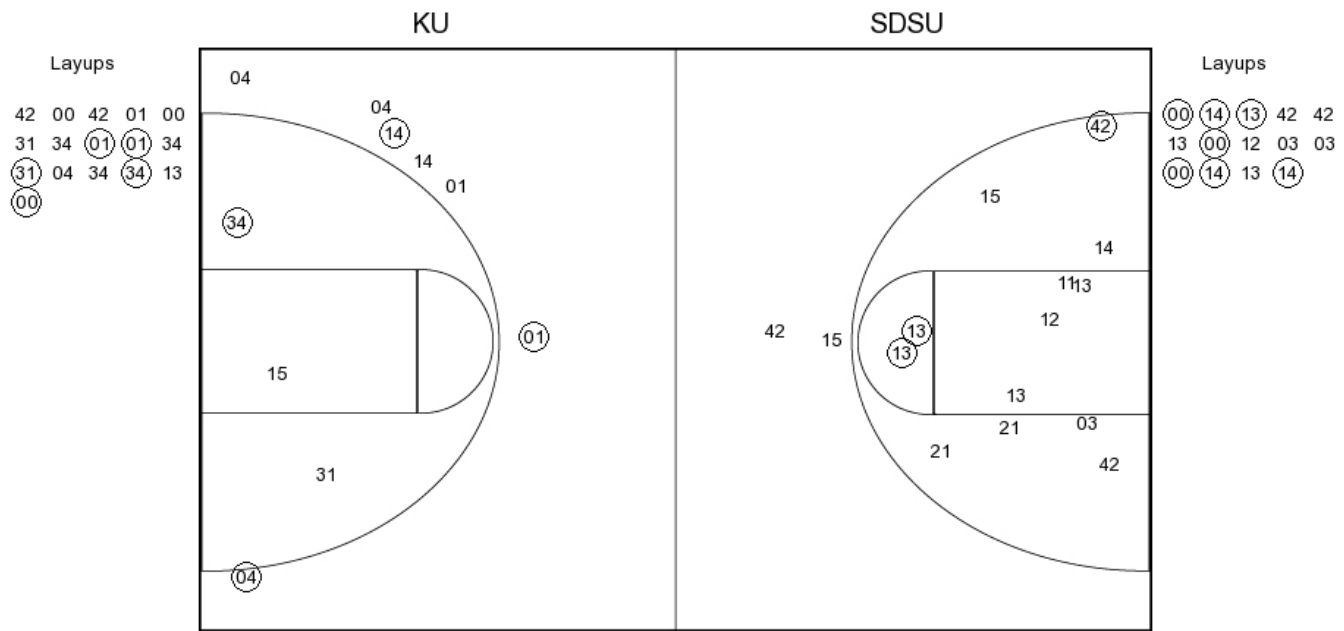
FG Made	10
FG Attempted	28
3PFG Made	3
3PFG Attempted	7

KANSAS vs SAN DIEGO STATE

OFFICIAL SHOT CHART

12/22/2015 at Steve Fisher Court at Viejas Arena

PERIOD 2



KU PERIOD 2

FG Made	9
FG Attempted	24
3PFG Made	3
3PFG Attempted	7

SDSU PERIOD 2

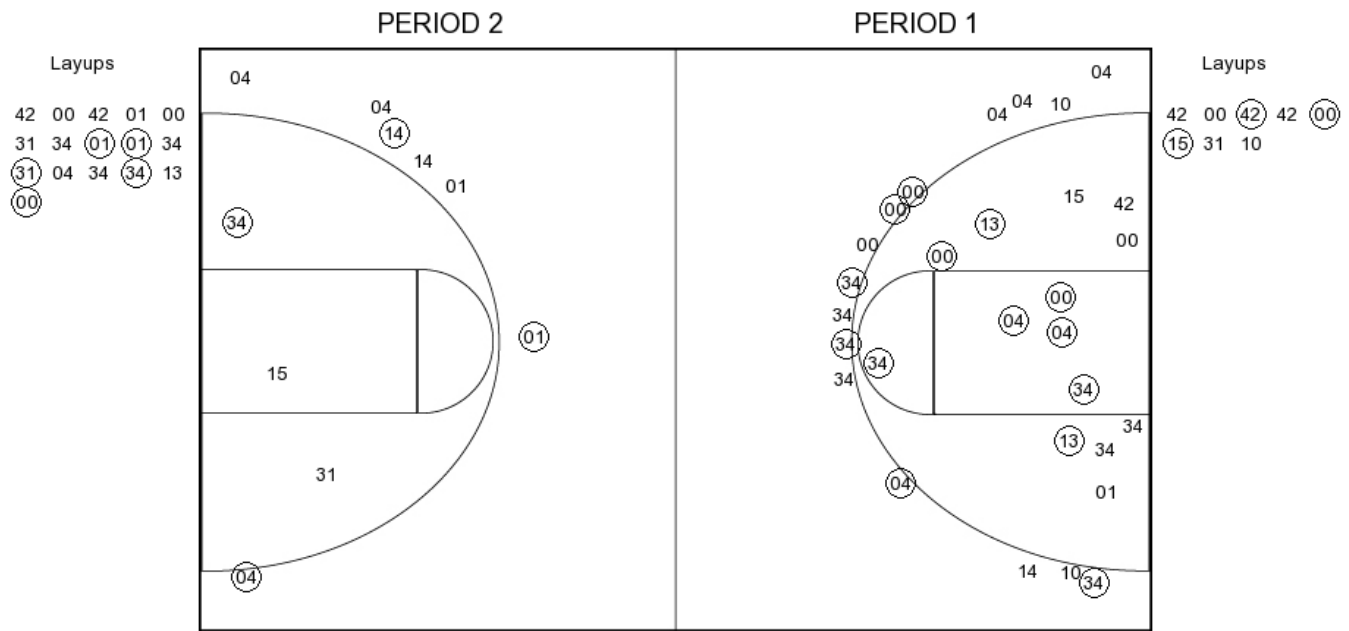
FG Made	10
FG Attempted	26
3PFG Made	0
3PFG Attempted	1

KANSAS vs SAN DIEGO STATE

OFFICIAL SHOT CHART

12/22/2015 at Steve Fisher Court at Viejas Arena

KANSAS



KU PERIOD 1

FG Made	17
FG Attempted	37
3PFG Made	5
3PFG Attempted	12

KU PERIOD 2

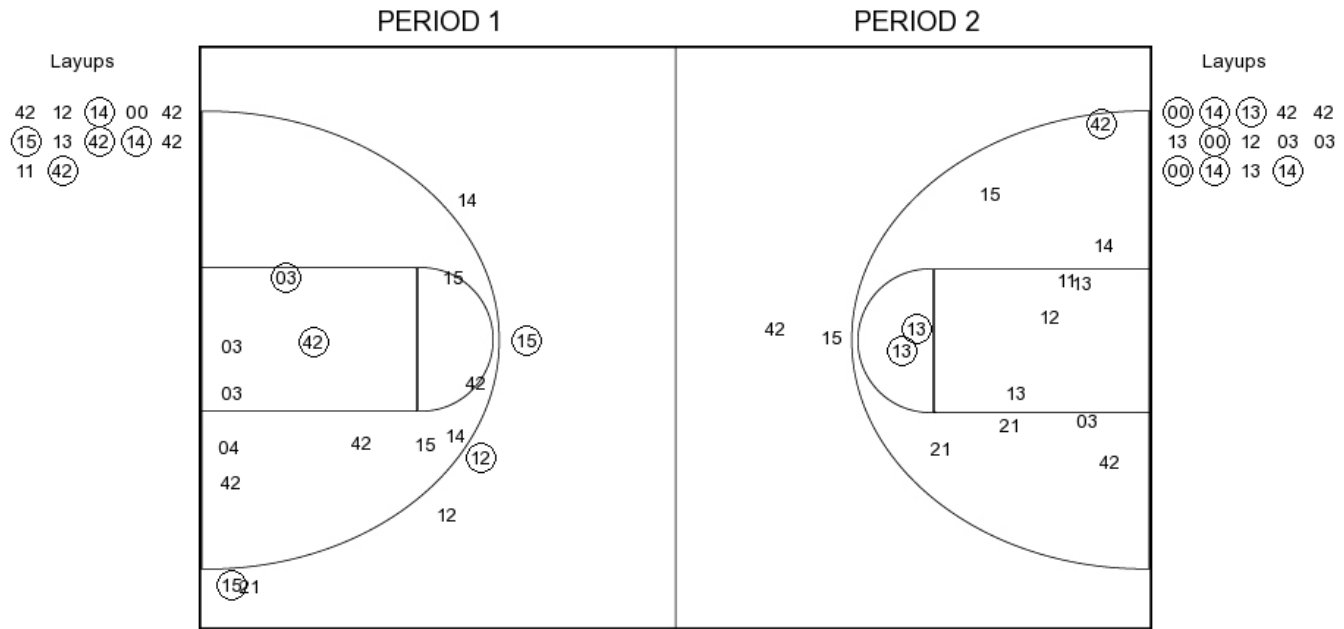
FG Made	9
FG Attempted	24
3PFG Made	3
3PFG Attempted	7

KANSAS vs SAN DIEGO STATE

OFFICIAL SHOT CHART

12/22/2015 at Steve Fisher Court at Viejas Arena

SAN DIEGO STATE



SDSU PERIOD 1

FG Made	10
FG Attempted	28
3PFG Made	3
3PFG Attempted	7

SDSU PERIOD 2

FG Made	10
FG Attempted	26
3PFG Made	0
3PFG Attempted	1