



WEST VIRGINIA VS. IOWA STATE

2/10/2016

WVU Coliseum, Morgantown, W.Va.

FINAL STATS

West Virginia

(19-6/8-4)

57

Iowa State

(12-11/4-8)

47

Start Time: 7:00 p.m.

Officials: Dee Kantner, Gina Cross, Doug Knight

Attendance: 1317

Start Time: 7:05 End Time: 8:50

Official Basketball Box Score -- Game Totals -- Final Statistics

Iowa State vs West Virginia

2/10/2016 7:00 p.m. at WVU Coliseum, Morgantown, W.Va.

Iowa State 47 - 12-11/4-8

##	Player	S	Total			Rebounds			PF	TP	A	TO	Blk	Stl	Min
			FG-FGA	3PT	FG-FGA	FT-FTA	Off Reb	Def Reb							
11	BUCKLEY,JADDA	g	6-15	1-5	4-5	1	2	3	0	17	3	4	0	1	38
12	JOHNSON,SEANNA	g	5-15	1-6	8-8	1	7	8	1	19	1	1	0	1	38
15	BLASKOWSKY,NICOLE	g	1-4	1-2	0-0	0	4	4	2	3	0	0	0	1	28
21	CARLETON,BRIDGET	g	0-7	0-4	0-0	2	2	4	3	0	2	2	0	2	37
32	BURKHALL,MEREDITH	f	3-12	0-2	0-0	5	2	7	4	6	0	1	0	0	27
03	DURR,EMILY		0-4	0-3	2-2	0	0	0	2	2	0	0	0	0	19
30	RICKETTS,CLAIRE		0-1	0-0	0-0	1	0	1	2	0	0	0	0	0	7
34	BAIER,MADISON		0-3	0-1	0-0	0	0	0	1	0	0	0	0	0	6
TEAM						0	6	6	0		2				
TOTALS			15-61	3-23	14-15	10	23	33	15	47	6	10	0	5	200

Deadball Rebounds: 1,0

FG %	1st Half: 6-28	21.4%	2nd Half: 9-33	27.3%	Game: 15-61	24.6%	4th Qtr	5-15	33.3%
	1st Qtr 4-18	22.2%	2nd Qtr 2-10	20.0%	3rd Qtr 4-18	22.2%			
3FG %	1st Half: 1-11	9.1%	2nd Half: 2-12	16.7%	Game: 3-23	13.0%	4th Qtr	0-7	00.0%
	1st Qtr 1-6	16.7%	2nd Qtr 0-5	00.0%	3rd Qtr 2-5	40.0%			
FT %	1st Half: 8-9	88.9%	2nd Half: 6-6	100.0%	Game: 14-15	93.3%	4th Qtr	4-4	100.0%
	1st Qtr 5-5	100.0%	2nd Qtr 3-4	75.0%	3rd Qtr 2-2	100.0%			

West Virginia 57 - 19-6/8-4

##	Player	S	Total			Rebounds			PF	TP	A	TO	Blk	Stl	Min
			FG-FGA	3PT	FG-FGA	FT-FTA	Off Reb	Def Reb							
12	RAY,CHANIA	g	0-2	0-2	1-2	0	3	3	1	1	2	2	1	0	16
15	MONTGOMERY,LANAY	c	6-8	0-0	3-4	3	12	15	2	15	0	3	3	0	33
22	PARDEE,KATRINA	g	1-7	0-2	2-2	0	1	1	0	4	1	2	0	1	12
23	HOLMES,BRIA	g	7-13	1-4	8-8	0	3	3	0	23	2	2	1	0	39
32	ROBERSON,ARIELLE	f	2-7	1-1	0-0	9	8	17	1	5	0	3	0	0	37
02	BREWER,ALEXIS		0-1	0-1	0-0	0	0	0	0	0	1	1	0	0	6
03	SEGGIE,OLIVIA		0-0	0-0	0-0	0	1	1	3	0	1	1	0	0	14
05	MARTIN,TYNICE		0-10	0-5	0-0	0	4	4	0	0	3	0	0	2	23
11	MULDROW,TEANA		1-4	0-0	3-4	0	2	2	4	5	0	1	1	0	9
21	MORTON,JESSICA		2-4	0-1	0-0	1	1	2	4	4	0	0	0	0	11
TEAM						2	1	3	0		0				
TOTALS			19-56	2-16	17-20	15	36	51	15	57	10	15	6	3	200

Deadball Rebounds: 2,0

FG %	1st Half: 11-33	33.3%	2nd Half: 8-23	34.8%	Game: 19-56	33.9%	4th Qtr	4-13	30.8%
	1st Qtr 4-15	26.7%	2nd Qtr 7-18	38.9%	3rd Qtr 4-10	40.0%			
3FG %	1st Half: 0-9	00.0%	2nd Half: 2-7	28.6%	Game: 2-16	12.5%	4th Qtr	1-4	25.0%
	1st Qtr 0-4	00.0%	2nd Qtr 0-5	00.0%	3rd Qtr 1-3	33.3%			
FT %	1st Half: 4-4	100.0%	2nd Half: 13-16	81.3%	Game: 17-20	85.0%	4th Qtr	9-12	75.0%
	1st Qtr 2-2	100.0%	2nd Qtr 2-2	100.0%	3rd Qtr 4-4	100.0%			

Officials: Dee Kantner, Gina Cross, Doug Knight
 Technical Fouls: Iowa State- None. West Virginia- None.
 Attendance: 1317
 Start Time: 7:05 End Time: 8:50

Score by periods	1st	2nd	3rd	4th	Total
Iowa State	14	7	12	14	47
West Virginia	10	16	13	18	57

Points	In Paint	Off T/O	2nd Chance	Fast Break	Bench
ISU	16	10	6	2	2
WVU	32	7	6	6	9

Last FG - ISU 4th-03:46, WVU 4th-00:22.
 Largest lead - Iowa State by 5 1st-01:27; West Virginia by 10 4th-00:22
 ISU led for 4:42. WVU led for 30:27. Game was tied for 4:51.

Score tied - 4 times
 Lead changed - 4 times

Official Basketball Box Score -- Game Totals -- First Half Statistics

Iowa State vs West Virginia

2/10/2016 7:00 p.m. at WVU Coliseum, Morgantown, W.Va.

Iowa State 21 • 12-11/4-8

##	Player	S	Total			Rebounds			PF	TP	A	TO	Blk	Stl	Min
			FG-FGA	3PT FG-FGA	FT-FTA	Off Reb	Def Reb	Tot Reb							
11	BUCKLEY,JADDA	g	4-8	1-4	2-3	0	2	2	0	11	1	4	0	1	18
12	JOHNSON,SEANNA	g	1-7	0-3	4-4	0	5	5	0	6	1	0	0	1	20
15	BLASKOWSKY,NICOLE	g	0-1	0-0	0-0	0	1	1	0	0	0	0	0	1	11
21	CARLETON,BRIDGET	g	0-2	0-2	0-0	0	2	2	1	0	0	2	0	0	19
32	BURKHALL,MEREDITH	f	1-6	0-0	0-0	3	1	4	1	2	0	1	0	0	11
03	DURR,EMILY		0-2	0-2	2-2	0	0	0	0	2	0	0	0	0	12
30	RICKETTS,CLAIRE		0-0	0-0	0-0	0	0	0	1	0	0	0	0	0	5
34	BAIER,MADISON		0-2	0-0	0-0	0	0	0	1	0	0	0	0	0	4
TEAM						0	3	3	0		1				
Totals			6-28	1-11	8-9	3	14	17	4	21	2	8	0	3	100

FG %	1st Qtr	4-18	22.2%	2nd Qtr	2-10	20.0%	Half:	6-28	21.4%
3FG %	1st Qtr	1-6	16.7%	2nd Qtr	0-5	00.0%	Half:	1-11	09.1%
FT %	1st Qtr	5-5	100.0%	2nd Qtr	3-4	75.0%	Half:	8-9	88.9%

West Virginia 26 • 19-6/8-4

##	Player	S	Total			Rebounds			PF	TP	A	TO	Blk	Stl	Min
			FG-FGA	3PT FG-FGA	FT-FTA	Off Reb	Def Reb	Tot Reb							
12	RAY,CHANIA	g	0-1	0-1	0-0	0	1	1	0	0	0	1	0	0	5
15	MONTGOMERY,LANAY	c	4-4	0-0	0-0	1	6	7	0	8	0	2	3	0	18
22	PARDEE,KATRINA	g	0-5	0-1	2-2	0	1	1	0	2	1	1	0	1	8
23	HOLMES,BRIA	g	5-10	0-3	2-2	0	3	3	0	12	1	1	0	0	19
32	ROBERSON,ARIELLE	f	1-5	0-0	0-0	6	3	9	0	2	0	2	0	0	18
02	BREWER,ALEXIS		0-0	0-0	0-0	0	0	0	0	0	0	1	0	0	2
03	SEGGIE,OLIVIA		0-0	0-0	0-0	0	1	1	2	0	1	1	0	0	8
05	MARTIN,TYNICE		0-6	0-4	0-0	0	2	2	0	0	1	0	0	2	12
11	MULDROW,TEANA		0-1	0-0	0-0	0	0	0	2	0	0	0	0	0	3
21	MORTON,JESSICA		1-1	0-0	0-0	0	1	1	2	2	0	0	0	0	7
TEAM						1	1	2	0		0				
Totals			11-33	0-9	4-4	8	19	27	6	26	4	9	3	3	100

FG %	1st Qtr	4-15	26.7%	2nd Qtr	7-18	38.9%	Half:	11-33	33.3%
3FG %	1st Qtr	0-4	00.0%	2nd Qtr	0-5	00.0%	Half:	0-9	00.0%
FT %	1st Qtr	2-2	100.0%	2nd Qtr	2-2	100.0%	Half:	4-4	100.0%

Officials: Dee Kantner, Gina Cross, Doug Knight
 Technical Fouls: Iowa State- None. West Virginia- None.
 Start Time: 7:05 End Time: 8:50

Score by periods	1st	2nd	3rd	4th	Total
Iowa State	14	7	12	14	47
West Virginia	10	16	13	18	57

Points	In Paint	Off T/O	2nd Chance	Fast Break	Bench
ISU	8	6	2	2	2
	20	4	4	4	2

Last FG - ISU 2nd-02:21, WVU 2nd-00:33.
 ISU led for 4:10. WVU led for 12:11. Game was tied for 3:39.

Score tied - 2 times
 Lead changed - 2 times

Iowa State vs West Virginia
2/10/2016; 7:00 p.m. at WVU Coliseum, Morgantown, W.Va.
Period 1 Play-By-Play

VISITORS: Iowa State	Time	Score	Margin	HOME: West Virginia
	09:40			MISSED 3PTR by HOLMES,BRIA
REBOUND (DEF) by BUCKLEY,JADDA	09:40			
MISSED 3PTR by JOHNSON,SEANNA	09:21			
	09:21			REBOUND (DEF) by PARDEE,KATRINA
	08:55	2-0	H 2	GOOD! JUMPER by MONTGOMERY,LANAY [PNT]
	08:55			ASSIST by PARDEE,KATRINA
MISSED JUMPER by BURKHALL,MEREDITH	08:41			
	08:41			REBOUND (DEF) by MONTGOMERY,LANAY
	08:32			MISSED LAYUP by PARDEE,KATRINA
REBOUND (DEF) by CARLETON,BRIDGET	08:32			
MISSED JUMPER by JOHNSON,SEANNA	08:24			
REBOUND (OFF) by BURKHALL,MEREDITH	08:24			
MISSED LAYUP by BURKHALL,MEREDITH	08:21			
	08:21			BLOCK by MONTGOMERY,LANAY
REBOUND (OFF) by BURKHALL,MEREDITH	08:20			
MISSED JUMPER by BURKHALL,MEREDITH	08:18			
	08:18			REBOUND (DEF) by ROBERSON,ARIELLE
FOUL by CARLETON,BRIDGET	08:11			
	08:11	3-0	H 3	GOOD! FT by HOLMES,BRIA
	08:11	4-0	H 4	GOOD! FT by HOLMES,BRIA
SUB IN: BAIER,MADISON	08:11			
SUB OUT: BURKHALL,MEREDITH	08:11			
MISSED LAYUP by BAIER,MADISON	07:45			
	07:45			REBOUND (DEF) by MONTGOMERY,LANAY
	07:39			MISSED 3PTR by RAY,CHANIA
REBOUND (DEF) by JOHNSON,SEANNA	07:39			
MISSED JUMPER by BAIER,MADISON	07:27			
	07:27			BLOCK by MONTGOMERY,LANAY
	07:26			REBOUND (DEF) by HOLMES,BRIA
	07:18			MISSED JUMPER by PARDEE,KATRINA
	07:18			REBOUND (OFF) by MONTGOMERY,LANAY
	07:12			TURNOVER by MONTGOMERY,LANAY
SUB IN: RICKETTS,CLAIRE	07:12			
SUB OUT: BAIER,MADISON	07:12			
TURNOVER by TEAM	06:42			
SUB IN: BURKHALL,MEREDITH	06:41			
SUB OUT: RICKETTS,CLAIRE	06:41			
	06:24			MISSED JUMPER by ROBERSON,ARIELLE
	06:24			REBOUND (OFF) by ROBERSON,ARIELLE
	06:14			MISSED JUMPER by PARDEE,KATRINA
REBOUND (DEF) by TEAM	06:14			
	06:12			SUB IN: MARTIN,TYNICE
	06:12			SUB OUT: PARDEE,KATRINA
TURNOVER by BURKHALL,MEREDITH	06:00			
SUB IN: BAIER,MADISON	06:00			
SUB OUT: BURKHALL,MEREDITH	06:00			
	05:46			MISSED JUMPER by HOLMES,BRIA
REBOUND (DEF) by BLASKOWSKY,NICOLE	05:46			
MISSED JUMPER by JOHNSON,SEANNA	05:34			
	05:34			REBOUND (DEF) by RAY,CHANIA
	05:29			TURNOVER by RAY,CHANIA
	05:29			FOUL by MORTON,JESSICA
SUB IN: 3	05:29			

VISITORS: Iowa State	Time	Score	Margin	HOME: West Virginia
SUB OUT: JOHNSON,SEANNA	05:29			
	05:29			SUB IN: MORTON,JESSICA
	05:29			SUB OUT: RAY,CHANIA
GOOD! FT by DURR,EMILY	05:18	4-1	H 3	
GOOD! FT by DURR,EMILY	05:18	4-2	H 2	
FOUL by BAIER,MADISON	05:05			
	04:55			MISSED 3PTR by MARTIN,TYNICE
REBOUND (DEF) by TEAM	04:55			
TIMEOUT MEDIA	04:50			
SUB IN: BURKHALL,MEREDITH	04:50			
SUB IN: JOHNSON,SEANNA	04:50			
SUB OUT: BLASKOWSKY,NICOLE	04:50			
SUB OUT: BAIER,MADISON	04:50			
	04:50			SUB IN: MULDROW,TEANA
	04:50			SUB OUT: ROBERSON,ARIELLE
TURNOVER by BUCKLEY,JADDA	04:49			
	04:47			STEAL by MARTIN,TYNICE
	04:42			MISSED JUMPER by MULDROW,TEANA
REBOUND (DEF) by JOHNSON,SEANNA	04:42			
MISSED 3PTR by BUCKLEY,JADDA	04:26			
	04:26			REBOUND (DEF) by MARTIN,TYNICE
	04:17	6-2	H 4	GOOD! LAYUP by HOLMES,BRIA [PNT]
GOOD! JUMPER by BUCKLEY,JADDA [PNT]	03:45	6-4	H 2	
	03:31			TURNOVER by MONTGOMERY,LANAY
SUB IN: RICKETTS,CLAIRE	03:31			
SUB OUT: BURKHALL,MEREDITH	03:31			
	03:31			SUB IN: ROBERSON,ARIELLE
	03:31			SUB OUT: MONTGOMERY,LANAY
MISSED 3PTR by CARLETON,BRIDGET	03:15			
	03:15			REBOUND (DEF) by ROBERSON,ARIELLE
	02:55			MISSED JUMPER by ROBERSON,ARIELLE
REBOUND (DEF) by CARLETON,BRIDGET	02:55			
GOOD! LAYUP by JOHNSON,SEANNA [PNT]	02:46	6-6	T	
	02:30			TURNOVER by ROBERSON,ARIELLE
STEAL by JOHNSON,SEANNA	02:28			
MISSED LAYUP by JOHNSON,SEANNA	02:25			
	02:25			REBOUND (DEF) by ROBERSON,ARIELLE
FOUL by RICKETTS,CLAIRE	02:14			
SUB IN: BURKHALL,MEREDITH	02:14			
SUB IN: BLASKOWSKY,NICOLE	02:14			
SUB OUT: RICKETTS,CLAIRE	02:14			
SUB OUT: CARLETON,BRIDGET	02:14			
	02:05			MISSED 3PTR by MARTIN,TYNICE
REBOUND (DEF) by BUCKLEY,JADDA	02:05			
MISSED 3PTR by BUCKLEY,JADDA	01:52			
REBOUND (OFF) by BURKHALL,MEREDITH	01:52			
	01:46			FOUL by MULDROW,TEANA
GOOD! FT by JOHNSON,SEANNA	01:46	6-7	V 1	
GOOD! FT by JOHNSON,SEANNA	01:46	6-8	V 2	
SUB IN: CARLETON,BRIDGET	01:46			
SUB OUT: BLASKOWSKY,NICOLE	01:46			
	01:46			SUB IN: BREWER,ALEXIS
	01:46			SUB IN: MONTGOMERY,LANAY
	01:46			SUB OUT: ROBERSON,ARIELLE
	01:46			SUB OUT: MARTIN,TYNICE
	01:33			TURNOVER by BREWER,ALEXIS
STEAL by BUCKLEY,JADDA	01:32			
GOOD! LAYUP by BUCKLEY,JADDA [FB/PNT]	01:27	6-10	V 4	

VISITORS: Iowa State	Time	Score	Margin	HOME: West Virginia
	01:27			FOUL by MULDROW,TEANA
GOOD! FT by BUCKLEY,JADDA	01:27	6-11	V 5	
	01:27			SUB IN: ROBERSON,ARIELLE
	01:27			SUB OUT: MULDROW,TEANA
	01:14	8-11	V 3	GOOD! LAYUP by MONTGOMERY,LANAY [PNT]
	01:14			ASSIST by HOLMES,BRIA
MISSED JUMPER by BURKHALL,MEREDITH	00:59			
	00:59			REBOUND (DEF) by MONTGOMERY,LANAY
	00:55			SUB IN: PARDEE,KATRINA
	00:55			SUB OUT: HOLMES,BRIA
	00:54			TURNOVER by HOLMES,BRIA
MISSED 3PTR by DURR,EMILY	00:47			
	00:47			REBOUND (DEF) by MONTGOMERY,LANAY
	00:30	10-11	V 1	GOOD! JUMPER by MORTON,JESSICA [PNT]
GOOD! 3PTR by BUCKLEY,JADDA	00:02	10-14	V 4	
ASSIST by JOHNSON,SEANNA	00:02			

Iowa State 14, West Virginia 10

Period 1-only	In Paint	Off T/O	2nd Chance	Fast Break	Bench	
ISU	6	5	2	2	2	Score tied - 2 times
WVU	8	0	0	0	2	Lead changed - 2 times

Iowa State vs West Virginia
2/10/2016; 7:00 p.m. at WVU Coliseum, Morgantown, W.Va.
Period 2 Play-By-Play

VISITORS: Iowa State	Time	Score	Margin	HOME: West Virginia
SUB IN: ALBRECHT,LEXI	10:00			
SUB OUT: CARLETON,BRIDGET	10:00			
	10:00			SUB IN: MARTIN,TYNICE
	10:00			SUB IN: MORTON,JESSICA
	10:00			SUB OUT: RAY,CHANIA
	10:00			SUB OUT: PARDEE,KATRINA
MISSED JUMPER by BURKHALL,MEREDITH	09:46			
	09:46			REBOUND (DEF) by MORTON,JESSICA
	09:39			MISSED 3PTR by MARTIN,TYNICE
REBOUND (DEF) by JOHNSON,SEANNA	09:39			
TURNOVER by CARLETON,BRIDGET	09:09			
SUB IN: BAIER,MADISON	09:07			
SUB OUT: BURKHALL,MEREDITH	09:07			
	08:48	12-14	V 2	GOOD! LAYUP by MONTGOMERY,LANAY [PNT]
	08:48			ASSIST by MARTIN,TYNICE
TURNOVER by BUCKLEY,JADDA	08:22			
SUB IN: CARLETON,BRIDGET	08:22			
SUB IN: RICKETTS,CLAIRE	08:22			
SUB OUT: ALBRECHT,LEXI	08:22			
SUB OUT: BAIER,MADISON	08:22			
	08:22			SUB IN: SEGGIE,OLIVIA
	08:22			SUB OUT: MORTON,JESSICA
	08:01			MISSED JUMPER by MARTIN,TYNICE
REBOUND (DEF) by JOHNSON,SEANNA	08:01			
MISSED 3PTR by BUCKLEY,JADDA	07:55			
	07:55			REBOUND (DEF) by TEAM
	07:36	14-14	T	GOOD! LAYUP by HOLMES,BRIA [PNT]
MISSED 3PTR by JOHNSON,SEANNA	07:01			
	07:01			REBOUND (DEF) by MONTGOMERY,LANAY
	06:51			MISSED JUMPER by MARTIN,TYNICE
	06:51			REBOUND (OFF) by TEAM
SUB IN: DURR,EMILY	06:49			
SUB OUT: BUCKLEY,JADDA	06:49			
	06:49			SUB IN: PARDEE,KATRINA
	06:49			SUB OUT: MARTIN,TYNICE
	06:32			MISSED 3PTR by PARDEE,KATRINA
REBOUND (DEF) by TEAM	06:32			
MISSED 3PTR by DURR,EMILY	06:10			
	06:10			REBOUND (DEF) by SEGGIE,OLIVIA
	06:02	16-14	H 2	GOOD! LAYUP by HOLMES,BRIA [FB/PNT]
MISSED 3PTR by CARLETON,BRIDGET	05:46			
	05:46			REBOUND (DEF) by MONTGOMERY,LANAY
	05:22			MISSED LAYUP by ROBERSON,ARIELLE
	05:22			REBOUND (OFF) by ROBERSON,ARIELLE
	05:19			TURNOVER by ROBERSON,ARIELLE
STEAL by BLASKOWSKY,NICOLE	05:18			
	05:18			FOUL by SEGGIE,OLIVIA
SUB IN: BURKHALL,MEREDITH	05:18			
SUB IN: BUCKLEY,JADDA	05:18			
SUB OUT: DURR,EMILY	05:18			
SUB OUT: RICKETTS,CLAIRE	05:18			
	05:18			SUB IN: MORTON,JESSICA
	05:18			SUB OUT: SEGGIE,OLIVIA

VISITORS: Iowa State	Time	Score	Margin	HOME: West Virginia
	05:11			FOUL by MORTON,JESSICA
MISSED FT by BUCKLEY,JADDA	05:11			
REBOUND (DEADB) by TEAM	05:11			
GOOD! FT by BUCKLEY,JADDA	05:11	16-15	H 1	
	04:57			MISSED 3PTR by HOLMES,BRIA
	04:57			REBOUND (OFF) by ROBERSON,ARIELLE
FOUL by BURKHALL,MEREDITH	04:54			
	04:54			TIMEOUT MEDIA
	04:54	17-15	H 2	GOOD! FT by PARDEE,KATRINA
	04:54	18-15	H 3	GOOD! FT by PARDEE,KATRINA
SUB IN: DURR,EMILY	04:54			
SUB OUT: CARLETON,BRIDGET	04:54			
	04:54			SUB IN: SEGGIE,OLIVIA
	04:54			SUB OUT: MORTON,JESSICA
MISSED JUMPER by BLASKOWSKY,NICOLE	04:33			
	04:33			BLOCK by MONTGOMERY,LANAY
	04:31			REBOUND (DEF) by HOLMES,BRIA
	04:25			MISSED 3PTR by HOLMES,BRIA
	04:25			REBOUND (OFF) by ROBERSON,ARIELLE
	04:21	20-15	H 5	GOOD! LAYUP by ROBERSON,ARIELLE [PNT]
TIMEOUT 30SEC	04:20			
SUB IN: CARLETON,BRIDGET	04:20			
SUB OUT: BLASKOWSKY,NICOLE	04:20			
TURNOVER by BUCKLEY,JADDA	04:08			
	04:06			STEAL by PARDEE,KATRINA
	04:01			MISSED LAYUP by PARDEE,KATRINA
	04:01			REBOUND (OFF) by ROBERSON,ARIELLE
	03:40			TURNOVER by PARDEE,KATRINA
TURNOVER by CARLETON,BRIDGET	03:24			
	03:24			SUB IN: MARTIN,TYNICE
	03:24			SUB OUT: PARDEE,KATRINA
	03:12			MISSED JUMPER by HOLMES,BRIA
REBOUND (DEF) by JOHNSON,SEANNA	03:12			
GOOD! JUMPER by BUCKLEY,JADDA [PNT]	03:03	20-17	H 3	
	02:47			MISSED 3PTR by MARTIN,TYNICE
	02:47			REBOUND (OFF) by ROBERSON,ARIELLE
	02:30			MISSED LAYUP by ROBERSON,ARIELLE
REBOUND (DEF) by BURKHALL,MEREDITH	02:30			
GOOD! JUMPER by BURKHALL,MEREDITH	02:21	20-19	H 1	
ASSIST by BUCKLEY,JADDA	02:21			
	02:01	22-19	H 3	GOOD! LAYUP by HOLMES,BRIA [PNT]
MISSED JUMPER by BUCKLEY,JADDA	01:44			
	01:44			REBOUND (DEF) by HOLMES,BRIA
	01:24	24-19	H 5	GOOD! JUMPER by MONTGOMERY,LANAY
	01:24			ASSIST by SEGGIE,OLIVIA
	01:07			FOUL by SEGGIE,OLIVIA
GOOD! FT by JOHNSON,SEANNA	01:07	24-20	H 4	
GOOD! FT by JOHNSON,SEANNA	01:07	24-21	H 3	
SUB IN: BAIER,MADISON	01:07			
SUB OUT: BURKHALL,MEREDITH	01:07			
	00:50			TURNOVER by SEGGIE,OLIVIA
TURNOVER by BUCKLEY,JADDA	00:39			
	00:37			STEAL by MARTIN,TYNICE
	00:33	26-21	H 5	GOOD! LAYUP by HOLMES,BRIA [FB/PNT]
MISSED 3PTR by JOHNSON,SEANNA	00:05			
	00:05			REBOUND (DEF) by MARTIN,TYNICE

Period 2-only	In Paint	Off T/O	2nd Chance	Fast Break	Bench	
ISU	2	1	0	0	0	Score tied - 0 times
WVU	12	4	4	4	0	Lead changed - 0 times

Official Basketball Box Score -- Game Totals -- Second Half Statistics

Iowa State vs West Virginia

2/10/2016 7:00 p.m. at WVU Coliseum, Morgantown, W.Va.

Iowa State 26 • 12-11/4-8

##	Player	S	Total			3-Ptr			Rebounds			PF	TP	A	TO	Blk	Stl	Min
			FG	FGA	3PT	FG-FGA	FT	F-TA	Off Reb	Def Reb	Tot Reb							
11	BUCKLEY,JADDA	g	2	7	0	1	2	2	1	0	1	0	6	2	0	0	0	20
12	JOHNSON,SEANNA	g	4	8	1	3	4	4	1	2	3	1	13	0	1	0	0	18
15	BLASKOWSKY,NICOLE	g	1	3	1	2	0	0	0	3	3	2	3	0	0	0	0	17
21	CARLETON,BRIDGET	g	0	5	0	2	0	0	2	0	2	2	0	2	0	0	2	18
32	BURKHALL,MEREDITH	f	2	6	0	2	0	0	2	1	3	3	4	0	0	0	0	16
03	DURR,EMILY		0	2	0	1	0	0	0	0	0	2	0	0	0	0	0	7
30	RICKETTS,CLAIRE		0	1	0	0	0	0	1	0	1	1	0	0	0	0	0	2
34	BAIER,MADISON		0	1	0	1	0	0	0	0	0	0	0	0	0	0	0	2
TEAM									0	3	3	0		1				
Totals			9	33	2	12	6	6	7	9	16	11	26	4	2	0	2	100
FG %	3rd Qtr	4-18	22.2%	4th Qtr	5-15	33.3%	Half:	9-33	27.3%									
3FG %	3rd Qtr	2-5	40.0%	4th Qtr	0-7	00.0%	Half:	2-12	09.1%									
FT %	3rd Qtr	2-2	100.0%	4th Qtr	4-4	100.0%	Half:	6-6	100.0%									

West Virginia 31 • 19-6/8-4

##	Player	S	Total			3-Ptr			Rebounds			PF	TP	A	TO	Blk	Stl	Min
			FG	FGA	3PT	FG-FGA	FT	F-TA	Off Reb	Def Reb	Tot Reb							
12	RAY,CHANIA	g	0	1	0	1	1	2	0	2	2	1	1	2	1	1	0	11
15	MONTGOMERY,LANAY	c	2	4	0	0	3	4	2	6	8	2	7	0	1	0	0	15
22	PARDEE,KATRINA	g	1	2	0	1	0	0	0	0	0	0	2	0	1	0	0	4
23	HOLMES,BRIA	g	2	3	1	1	6	6	0	0	0	0	11	1	1	1	0	20
32	ROBERSON,ARIELLE	f	1	2	1	1	0	0	3	5	8	1	3	0	1	0	0	19
02	BREWER,ALEXIS		0	1	0	1	0	0	0	0	0	0	0	1	0	0	0	4
03	SEGGIE,OLIVIA		0	0	0	0	0	0	0	0	0	1	0	0	0	0	0	6
05	MARTIN,TYNICE		0	4	0	1	0	0	0	2	2	0	0	2	0	0	0	11
11	MULDROW,TEANA		1	3	0	0	3	4	0	2	2	2	5	0	1	1	0	6
21	MORTON,JESSICA		1	3	0	1	0	0	1	0	1	2	2	0	0	0	0	4
TEAM									1	0	1	0		0				
Totals			8	23	2	7	13	16	7	17	24	9	31	6	6	3	0	100
FG %	3rd Qtr	4-10	40.0%	4th Qtr	4-13	30.8%	Half:	8-23	34.8%									
3FG %	3rd Qtr	1-3	33.3%	4th Qtr	1-4	25.0%	Half:	2-7	00.0%									
FT %	3rd Qtr	4-4	100.0%	4th Qtr	9-12	75.0%	Half:	13-16	81.3%									

Officials: Dee Kantner, Gina Cross, Doug Knight
 Technical Fouls: Iowa State- None. West Virginia- None.
 Start Time: 7:05 End Time: 8:50

Score by periods	1st	2nd	3rd	4th	Total
Iowa State	14	7	12	14	47
West Virginia	10	16	13	18	57

Points	In Paint	Off T/O	2nd Chance	Fast Break	Bench
ISU	8	4	4	0	0
	12	3	12	2	7

Last FG - ISU 4th-03:46, WVU 4th-00:22.
 ISU led for 0:32. WVU led for 18:16. Game was tied for 1:12.

Score tied - 2 times
 Lead changed - 2 times

Iowa State vs West Virginia
2/10/2016; 7:00 p.m. at WVU Coliseum, Morgantown, W.Va.
Period 3 Play-By-Play

VISITORS: Iowa State	Time	Score	Margin	HOME: West Virginia
SUB IN: DURR,EMILY	10:00			
SUB OUT: BLASKOWSKY,NICOLE	10:00			
	10:00			SUB IN: MORTON,JESSICA
	10:00			SUB OUT: RAY,CHANIA
GOOD! 3PTR by JOHNSON,SEANNA	09:38	26-24	H 2	
ASSIST by CARLETON,BRIDGET	09:38			
	09:18			MISSED JUMPER by MORTON,JESSICA
	09:18			REBOUND (OFF) by ROBERSON,ARIELLE
FOUL by DURR,EMILY	09:15			
	09:03	28-24	H 4	GOOD! LAYUP by PARDEE,KATRINA [PNT]
	09:03			ASSIST by HOLMES,BRIA
	08:34			FOUL by ROBERSON,ARIELLE
GOOD! FT by JOHNSON,SEANNA	08:34	28-25	H 3	
GOOD! FT by JOHNSON,SEANNA	08:34	28-26	H 2	
	08:34			SUB IN: MULDROW,TEANA
	08:34			SUB OUT: ROBERSON,ARIELLE
FOUL by DURR,EMILY	08:13			
	08:09			MISSED 3PTR by PARDEE,KATRINA
	08:09			REBOUND (OFF) by MORTON,JESSICA
	08:05	30-26	H 4	GOOD! LAYUP by MORTON,JESSICA [PNT]
	07:46			FOUL by MORTON,JESSICA
	07:46			SUB IN: RAY,CHANIA
	07:46			SUB OUT: MORTON,JESSICA
MISSED 3PTR by BUCKLEY,JADDA	07:43			
	07:43			REBOUND (DEF) by MONTGOMERY,LANAY
	07:27			TURNOVER by MULDROW,TEANA
SUB IN: RICKETTS,CLAIRE	07:27			
SUB OUT: BURKHALL,MEREDITH	07:27			
	07:16			FOUL by MULDROW,TEANA
	07:16			SUB IN: ROBERSON,ARIELLE
	07:16			SUB OUT: MULDROW,TEANA
MISSED LAYUP by DURR,EMILY	07:07			
	07:07			REBOUND (DEF) by MONTGOMERY,LANAY
FOUL by RICKETTS,CLAIRE	07:01			
	07:01	31-26	H 5	GOOD! FT by HOLMES,BRIA
	07:01	32-26	H 6	GOOD! FT by HOLMES,BRIA
SUB IN: BLASKOWSKY,NICOLE	07:01			
SUB OUT: DURR,EMILY	07:01			
MISSED JUMPER by RICKETTS,CLAIRE	06:33			
	06:33			REBOUND (DEF) by MONTGOMERY,LANAY
	06:21			TURNOVER by PARDEE,KATRINA
STEAL by CARLETON,BRIDGET	06:20			
MISSED LAYUP by CARLETON,BRIDGET	06:16			
REBOUND (OFF) by RICKETTS,CLAIRE	06:16			
MISSED LAYUP by JOHNSON,SEANNA	05:54			
REBOUND (OFF) by JOHNSON,SEANNA	05:54			
MISSED 3PTR by JOHNSON,SEANNA	05:49			
	05:49			REBOUND (DEF) by ROBERSON,ARIELLE
FOUL by CARLETON,BRIDGET	05:32			
	05:32	33-26	H 7	GOOD! FT by HOLMES,BRIA
	05:32	34-26	H 8	GOOD! FT by HOLMES,BRIA
SUB IN: BURKHALL,MEREDITH	05:32			
SUB IN: DURR,EMILY	05:32			

VISITORS: Iowa State	Time	Score	Margin	HOME: West Virginia
SUB OUT: CARLETON,BRIDGET	05:32			
SUB OUT: RICKETTS,CLAIRE	05:32			
	05:32			SUB IN: MARTIN,TYNICE
	05:32			SUB OUT: PARDEE,KATRINA
MISSED JUMPER by BURKHALL,MEREDITH	05:25			
REBOUND (OFF) by BURKHALL,MEREDITH	05:25			
MISSED JUMPER by BUCKLEY,JADDA	05:10			
	05:10			BLOCK by RAY,CHANIA
	05:07			REBOUND (DEF) by ROBERSON,ARIELLE
	05:03			TURNOVER by RAY,CHANIA
TIMEOUT media	04:59			
MISSED 3PTR by DURR,EMILY	04:40			
	04:40			BLOCK by HOLMES,BRIA
	04:37			REBOUND (DEF) by MONTGOMERY,LANAY
	04:33			MISSED JUMPER by MARTIN,TYNICE
REBOUND (DEF) by JOHNSON,SEANNA	04:33			
GOOD! 3PTR by BLASKOWSKY,NICOLE	04:18	34-29	H 5	
ASSIST by BUCKLEY,JADDA	04:18			
	03:50			MISSED LAYUP by MONTGOMERY,LANAY
REBOUND (DEF) by BLASKOWSKY,NICOLE	03:50			
MISSED LAYUP by BLASKOWSKY,NICOLE	03:39			
	03:39			REBOUND (DEF) by MONTGOMERY,LANAY
	03:34			TURNOVER by HOLMES,BRIA
SUB IN: CARLETON,BRIDGET	03:34			
SUB OUT: JOHNSON,SEANNA	03:34			
	03:34			SUB IN: SEGGIE,OLIVIA
	03:34			SUB OUT: RAY,CHANIA
GOOD! LAYUP by BUCKLEY,JADDA [PNT]	03:17	34-31	H 3	
	02:54	36-31	H 5	GOOD! LAYUP by HOLMES,BRIA [PNT]
MISSED JUMPER by CARLETON,BRIDGET	02:36			
	02:36			REBOUND (DEF) by MARTIN,TYNICE
	02:21			TURNOVER by ROBERSON,ARIELLE
STEAL by CARLETON,BRIDGET	02:18			
	02:03			FOUL by MONTGOMERY,LANAY
SUB IN: BAIER,MADISON	02:03			
SUB IN: JOHNSON,SEANNA	02:03			
SUB OUT: BURKHALL,MEREDITH	02:03			
SUB OUT: DURR,EMILY	02:03			
	02:03			SUB IN: MULDROW,TEANA
	02:03			SUB OUT: MONTGOMERY,LANAY
MISSED JUMPER by JOHNSON,SEANNA	02:01			
	02:01			REBOUND (DEF) by ROBERSON,ARIELLE
	01:51			MISSED JUMPER by MULDROW,TEANA
REBOUND (DEF) by BLASKOWSKY,NICOLE	01:51			
GOOD! JUMPER by JOHNSON,SEANNA [PNT]	01:30	36-33	H 3	
	01:20			MISSED 3PTR by MARTIN,TYNICE
REBOUND (DEF) by TEAM	01:20			
SUB IN: BURKHALL,MEREDITH	01:18			
SUB OUT: BAIER,MADISON	01:18			
	01:18			SUB IN: BREWER,ALEXIS
	01:18			SUB OUT: MARTIN,TYNICE
MISSED LAYUP by BURKHALL,MEREDITH	01:00			
	01:00			REBOUND (DEF) by ROBERSON,ARIELLE
	00:35	39-33	H 6	GOOD! 3PTR by HOLMES,BRIA
	00:35			ASSIST by BREWER,ALEXIS
MISSED LAYUP by BUCKLEY,JADDA	00:00			
	00:00			REBOUND (DEF) by ROBERSON,ARIELLE

Iowa State 47, West Virginia 57

Period 3-only	In Paint	Off T/O	2nd Chance	Fast Break	Bench	
ISU	4	2	0	0	0	Score tied - 0 times
WVU	6	0	4	0	2	Lead changed - 0 times

Iowa State vs West Virginia
2/10/2016; 7:00 p.m. at WVU Coliseum, Morgantown, W.Va.
Period 4 Play-By-Play

VISITORS: Iowa State	Time	Score	Margin	HOME: West Virginia
	10:00			SUB IN: MULDROW,TEANA
	10:00			SUB IN: BREWER,ALEXIS
	10:00			SUB IN: SEGGIE,OLIVIA
	10:00			SUB OUT: RAY,CHANIA
	10:00			SUB OUT: MONTGOMERY,LANAY
	10:00			SUB OUT: PARDEE,KATRINA
	09:45			MISSED 3PTR by BREWER,ALEXIS
REBOUND (DEF) by JOHNSON,SEANNA	09:45			
GOOD! JUMPER by JOHNSON,SEANNA	09:17	39-35	H 4	
	08:41			MISSED JUMPER by MULDROW,TEANA
REBOUND (DEF) by TEAM	08:41			
MISSED JUMPER by BUCKLEY,JADDA	08:22			
REBOUND (OFF) by BURKHALL,MEREDITH	08:22			
	08:20			FOUL by SEGGIE,OLIVIA
	08:20			SUB IN: MORTON,JESSICA
	08:20			SUB OUT: SEGGIE,OLIVIA
GOOD! LAYUP by JOHNSON,SEANNA [PNT]	08:08	39-37	H 2	
	07:47			MISSED 3PTR by MORTON,JESSICA
REBOUND (DEF) by BLASKOWSKY,NICOLE	07:47			
	07:39			FOUL by MULDROW,TEANA
	07:39			SUB IN: MONTGOMERY,LANAY
	07:39			SUB OUT: MULDROW,TEANA
MISSED 3PTR by BLASKOWSKY,NICOLE	07:36			
REBOUND (OFF) by CARLETON,BRIDGET	07:36			
GOOD! JUMPER by BURKHALL,MEREDITH	07:30	39-39	T	
ASSIST by CARLETON,BRIDGET	07:30			
	07:25			TIMEOUT 30SEC
	07:25			SUB IN: MARTIN,TYNICE
	07:25			SUB OUT: BREWER,ALEXIS
	07:11			MISSED JUMPER by HOLMES,BRIA
REBOUND (DEF) by TEAM	07:11			
	06:45			FOUL by MORTON,JESSICA
GOOD! FT by JOHNSON,SEANNA	06:45	39-40	V 1	
GOOD! FT by JOHNSON,SEANNA	06:45	39-41	V 2	
	06:45			SUB IN: RAY,CHANIA
	06:45			SUB OUT: MORTON,JESSICA
	06:35			MISSED LAYUP by MONTGOMERY,LANAY
	06:35			REBOUND (OFF) by TEAM
SUB IN: BAIER,MADISON	06:32			
SUB OUT: BURKHALL,MEREDITH	06:32			
	06:13	42-41	H 1	GOOD! 3PTR by ROBERSON,ARIELLE
	06:13			ASSIST by RAY,CHANIA
MISSED 3PTR by BAIER,MADISON	05:56			
	05:56			REBOUND (DEF) by RAY,CHANIA
FOUL by BLASKOWSKY,NICOLE	05:46			
	05:46	43-41	H 2	GOOD! FT by RAY,CHANIA
	05:46			MISSED FT by RAY,CHANIA
	05:46			REBOUND (OFF) by ROBERSON,ARIELLE
SUB IN: BURKHALL,MEREDITH	05:46			
SUB OUT: BAIER,MADISON	05:46			
	05:40	45-41	H 4	GOOD! LAYUP by MONTGOMERY,LANAY [PNT]
	05:40			ASSIST by MARTIN,TYNICE
MISSED 3PTR by BURKHALL,MEREDITH	05:12			

VISITORS: Iowa State	Time	Score	Margin	HOME: West Virginia
	05:12			REBOUND (DEF) by MONTGOMERY,LANAY
	05:01			MISSED JUMPER by MARTIN,TYNICE
REBOUND (DEF) by BURKHALL,MEREDITH	05:01			
GOOD! LAYUP by BUCKLEY,JADDA [PNT]	04:47	45-43	H 2	
	04:41			TIMEOUT MEDIA
SUB IN: DURR,EMILY	04:41			
SUB OUT: JOHNSON,SEANNA	04:41			
	04:19			MISSED 3PTR by RAY,CHANIA
	04:19			REBOUND (OFF) by MONTGOMERY,LANAY
FOUL by BLASKOWSKY,NICOLE	04:18			
SUB IN: JOHNSON,SEANNA	04:18			
SUB OUT: DURR,EMILY	04:18			
	04:04			TURNOVER by MONTGOMERY,LANAY
GOOD! JUMPER by BURKHALL,MEREDITH	03:46	45-45	T	
ASSIST by BUCKLEY,JADDA	03:37			
	03:23			MISSED JUMPER by ROBERSON,ARIELLE
	03:23			REBOUND (OFF) by MONTGOMERY,LANAY
FOUL by JOHNSON,SEANNA	03:19			
	03:19			MISSED FT by MONTGOMERY,LANAY
	03:19			REBOUND (DEADB) by TEAM
	03:19	46-45	H 1	GOOD! FT by MONTGOMERY,LANAY
TURNOVER by JOHNSON,SEANNA	02:59			
	02:47	48-45	H 3	GOOD! LAYUP by MONTGOMERY,LANAY [PNT]
	02:47			ASSIST by MARTIN,TYNICE
TIMEOUT 30SEC	02:38			
MISSED 3PTR by CARLETON,BRIDGET	02:32			
	02:32			REBOUND (DEF) by RAY,CHANIA
FOUL by BURKHALL,MEREDITH	02:11			
	02:11	49-45	H 4	GOOD! FT by MONTGOMERY,LANAY
	02:11	50-45	H 5	GOOD! FT by MONTGOMERY,LANAY
	01:45			FOUL by MONTGOMERY,LANAY
	01:40			FOUL by RAY,CHANIA
GOOD! FT by BUCKLEY,JADDA	01:40	50-46	H 4	
GOOD! FT by BUCKLEY,JADDA	01:40	50-47	H 3	
	01:21			MISSED JUMPER by MARTIN,TYNICE
	01:21			REBOUND (OFF) by ROBERSON,ARIELLE
	01:10			TIMEOUT 30SEC
FOUL by BURKHALL,MEREDITH	00:58			
	00:58	51-47	H 4	GOOD! FT by HOLMES,BRIA
	00:58	52-47	H 5	GOOD! FT by HOLMES,BRIA
TIMEOUT 30SEC	00:58			
TURNOVER by TEAM	00:58			
	00:58			SUB IN: MULDROW,TEANA
	00:58			SUB OUT: MONTGOMERY,LANAY
FOUL by CARLETON,BRIDGET	00:56			
	00:56			MISSED FT by MULDROW,TEANA
	00:56			REBOUND (DEADB) by TEAM
	00:56	53-47	H 6	GOOD! FT by MULDROW,TEANA
MISSED JUMPER by BUCKLEY,JADDA	00:48			
REBOUND (OFF) by BUCKLEY,JADDA	00:48			
MISSED 3PTR by CARLETON,BRIDGET	00:44			
	00:44			REBOUND (DEF) by MULDROW,TEANA
FOUL by BURKHALL,MEREDITH	00:40			
	00:40	54-47	H 7	GOOD! FT by MULDROW,TEANA
	00:40	55-47	H 8	GOOD! FT by MULDROW,TEANA
MISSED 3PTR by BURKHALL,MEREDITH	00:31			
	00:31			REBOUND (DEF) by MARTIN,TYNICE
	00:22	57-47	H 10	GOOD! LAYUP by MULDROW,TEANA [FB/PNT]

VISITORS: Iowa State	Time	Score	Margin	HOME: West Virginia
	00:22			ASSIST by RAY,CHANIA
MISSED 3PTR by JOHNSON,SEANNA	00:07			
REBOUND (OFF) by CARLETON,BRIDGET	00:07			
MISSED JUMPER by CARLETON,BRIDGET	00:03			
	00:03			BLOCK by MULDROW,TEANA
	00:01			REBOUND (DEF) by MULDROW,TEANA

Iowa State 47, West Virginia 57

Period 4-only	In Paint	Off T/O	2nd Chance	Fast Break	Bench	
ISU	4	2	4	0	0	Score tied - 4 times
WVU	6	3	8	2	5	Lead changed - 2 times

Iowa State vs West Virginia
2/10/2016; 7:00 p.m. at WVU Coliseum, Morgantown, W.Va.
Scoring/Runs Reference

Period 1			Period 2		
Iowa State	Score	West Virginia	Iowa State	Score	West Virgir
	X	HOLMES 3PTR - 09:40	09:46 - BURKHALL JUMPER	X	
09:21 - JOHNSON 3PTR	X			X	MARTIN 3PTR - 09:
	0-2 2	2 ^P MONTGOMERY JUMPER - 08:55	09:09 - CARLETON TURN	TO	
08:41 - BURKHALL JUMPER	X			14-12 -2	2 ^P MONTGOMERY LAYUP - 08:
	X	PARDEE LAYUP - 08:32	08:22 - BUCKLEY TURN	TO	
08:24 - JOHNSON JUMPER	X			X	MARTIN JUMPER - 08:
08:21 - BURKHALL LAYUP	X		07:55 - BUCKLEY 3PTR	X	
08:18 - BURKHALL JUMPER	X			14-14 0	2 ^P HOLMES LAYUP - 07:
	0-3 3	HOLMES FT - 08:11	07:01 - JOHNSON 3PTR	X	
	0-4 4	HOLMES FT - 08:11		X	MARTIN JUMPER - 06:
07:45 - BAIER LAYUP	X		06:10 - DURR 3PTR	X	PARDEE 3PTR - 06:
	X	RAY 3PTR - 07:39		14-16 2	2 ^{PF} HOLMES LAYUP - 06:
07:27 - BAIER JUMPER	X		05:46 - CARLETON 3PTR	X	
	X	PARDEE JUMPER - 07:18		X	ROBERSON LAYUP - 05:
	TO	MONTGOMERY TURN - 07:12		TO	ROBERSON TURN - 05:
06:42 - TEAM TURN	TO		05:11 - BUCKLEY FT	X	
	X	ROBERSON JUMPER - 06:24	05:11 - BUCKLEY FT	1	15-16 1
	X	PARDEE JUMPER - 06:14		X	HOLMES 3PTR - 04:
06:00 - BURKHALL TURN	TO			15-17 2	1
	X	HOLMES JUMPER - 05:46		15-18 3	1
05:34 - JOHNSON JUMPER	X		04:33 - BLASKOWSKY JUMPER	X	
	TO	RAY TURN - 05:29		X	HOLMES 3PTR - 04:
05:18 - DURR FT	1			15-20 5	2 ^P ROBERSON LAYUP - 04:
05:18 - DURR FT	1		04:08 - BUCKLEY TURN	TO	
	X	MARTIN 3PTR - 04:55		X	PARDEE LAYUP - 04:
04:49 - BUCKLEY TURN	TO			TO	PARDEE TURN - 03:
	X	MULDROW JUMPER - 04:42	03:24 - CARLETON TURN	TO	
04:26 - BUCKLEY 3PTR	X			X	HOLMES JUMPER - 03:
	2-6 4	HOLMES LAYUP - 04:17	03:03 - BUCKLEY JUMPER	2 ^P	17-20 3
03:45 - BUCKLEY JUMPER	2 ^P			X	MARTIN 3PTR - 02:
	4-6 2	MONTGOMERY TURN - 03:31		X	ROBERSON LAYUP - 02:
03:15 - CARLETON 3PTR	X		02:21 - BURKHALL JUMPER	2	19-20 1
	X	ROBERSON JUMPER - 02:55		19-22 3	2 ^P HOLMES LAYUP - 02:
02:46 - JOHNSON LAYUP	2 ^P		01:44 - BUCKLEY JUMPER	X	
	6-6 0	ROBERSON TURN - 02:30		19-24 5	2
02:25 - JOHNSON LAYUP	X		01:07 - JOHNSON FT	1	20-24 4
	X	MARTIN 3PTR - 02:05	01:07 - JOHNSON FT	1	21-24 3
01:52 - BUCKLEY 3PTR	X			TO	SEGGIE TURN - 00:
01:46 - JOHNSON FT	1		00:39 - BUCKLEY TURN	TO	
01:46 - JOHNSON FT	1	BREWER TURN - 01:33		21-26 5	2 ^{PF} HOLMES LAYUP - 00:
	TO		00:05 - JOHNSON 3PTR	X	
01:27 - BUCKLEY LAYUP	2 ^{PF}				

01:27 - BUCKLEY FT

1

11-6
-5

11-8
-3

2^P

MONTGOMERY LAYUP - 01:14

00:59 -

BURKHALL JUMPER

X

TO

HOLMES TURN - 00:54

00:47 - DURR 3PTR

X

11-10
-1

2^P

MORTON JUMPER - 00:30

00:02 - BUCKLEY 3PTR

3

14-10
-4

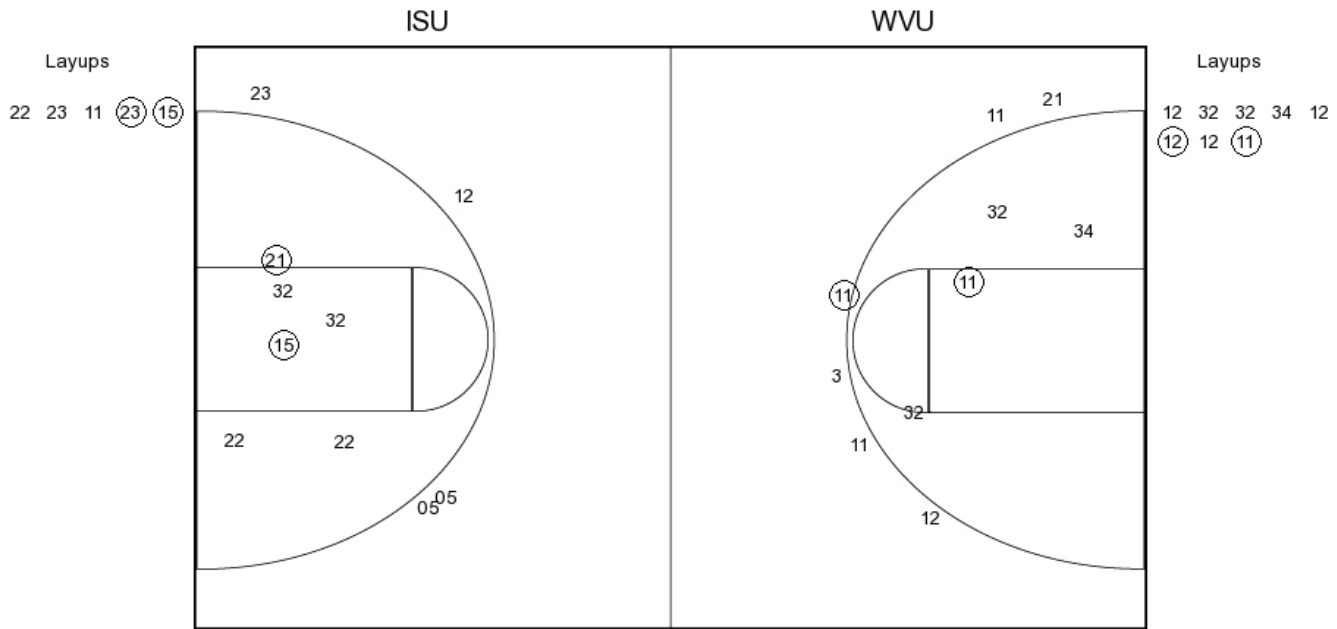
Iowa State		Period 3	West Virginia	Iowa State	Period 4	West Virgir
		Score		Score		
09:38 - JOHNSON 3PTR	3	24-26 2			X	BREWER 3PTR - 09:
			MORTON JUMPER - 09:18	2	35-39 4	
		X	PARDEE LAYUP - 09:03		X	MULDROW JUMPER - 08:
08:34 - JOHNSON FT	1	24-28 4				
08:34 - JOHNSON FT	1	25-28 3		08:22 - BUCKLEY JUMPER	X	
			PARDEE 3PTR - 08:09	2 ^P	37-39 2	MORTON 3PTR - 07:
		X	MORTON LAYUP - 08:05		X	
07:43 - BUCKLEY 3PTR	X	26-30 4		07:36 - BLASKOWSKY 3PTR	X	
			MULDROW TURN - 07:27	2	39-39 0	
07:07 - DURR LAYUP	X	TO			X	HOLMES JUMPER - 07:
			HOLMES FT - 07:01	1	40-39 -1	
		26-31 5	HOLMES FT - 07:01	1	41-39 -2	MONTGOMERY LAYUP - 06:
		26-32 6	PARDEE TURN - 06:21		X	ROBERSON 3PTR - 06:
06:33 - RICKETTS JUMPER	X			41-42 1	3	
		TO	05:56 - BAIER 3PTR	X		
06:16 - CARLETON LAYUP	X			41-43 2	1	RAY FT - 05:
05:54 - JOHNSON LAYUP	X				X	RAY FT - 05:
05:49 - JOHNSON 3PTR	X		HOLMES FT - 05:32	41-45 4	2 ^P	MONTGOMERY LAYUP - 05:
		26-33 7	HOLMES FT - 05:32	X		MARTIN JUMPER - 05:
		26-34 8			X	
05:25 - BURKHALL JUMPER	X		RAY TURN - 05:03	2 ^P	43-45 2	RAY 3PTR - 04:
05:10 - BUCKLEY JUMPER	X		MARTIN JUMPER - 04:33		X	MONTGOMERY TURN - 04:
		TO	MONTGOMERY LAYUP - 03:50	2	45-45 0	
04:40 - DURR 3PTR	X				X	ROBERSON JUMPER - 03:
		X			X	MONTGOMERY FT - 03:
04:18 - BLASKOWSKY 3PTR	3	29-34 5		45-46 1	1	MONTGOMERY FT - 03:
			HOLMES TURN - 03:34		2 ^P	MONTGOMERY LAYUP - 02:
03:39 - BLASKOWSKY LAYUP	X		HOLMES LAYUP - 02:54	X		
		TO	ROBERSON TURN - 02:21		45-49 4	MONTGOMERY FT - 02:
03:17 - BUCKLEY LAYUP	2 ^P	31-34 3	MULDROW JUMPER - 01:51		45-50 5	MONTGOMERY FT - 02:
		31-36 5		1	46-50 4	
02:36 - CARLETON JUMPER	X		MARTIN 3PTR - 01:20	1	47-50 3	MARTIN JUMPER - 01:
		TO	HOLMES 3PTR - 00:35		X	HOLMES FT - 00:
02:01 - JOHNSON JUMPER	X			47-51 4	1	HOLMES FT - 00:
		X		47-52 5	1	
01:30 - JOHNSON JUMPER	2 ^P	33-36 3				MULDROW FT - 00:
					X	MULDROW FT - 00:
01:00 - BURKHALL LAYUP	X			47-53 6	1	
		33-39 6				
00:00 - BUCKLEY LAYUP	X				X	MULDROW FT - 00:
						MULDROW FT - 00:
					47-54 7	
					47-55 8	
					X	MULDROW LAYUP - 00:
					47-57 10	
					2 ^{PF}	
					X	
					X	

Iowa State vs West Virginia

OFFICIAL SHOT CHART

2/10/2016 at WVU Coliseum, Morgantown, W.Va.

PERIOD 1



ISU PERIOD 1

FG Made	6
FG Attempted	28
3PFG Made	1
3PFG Attempted	11

WVU PERIOD 1

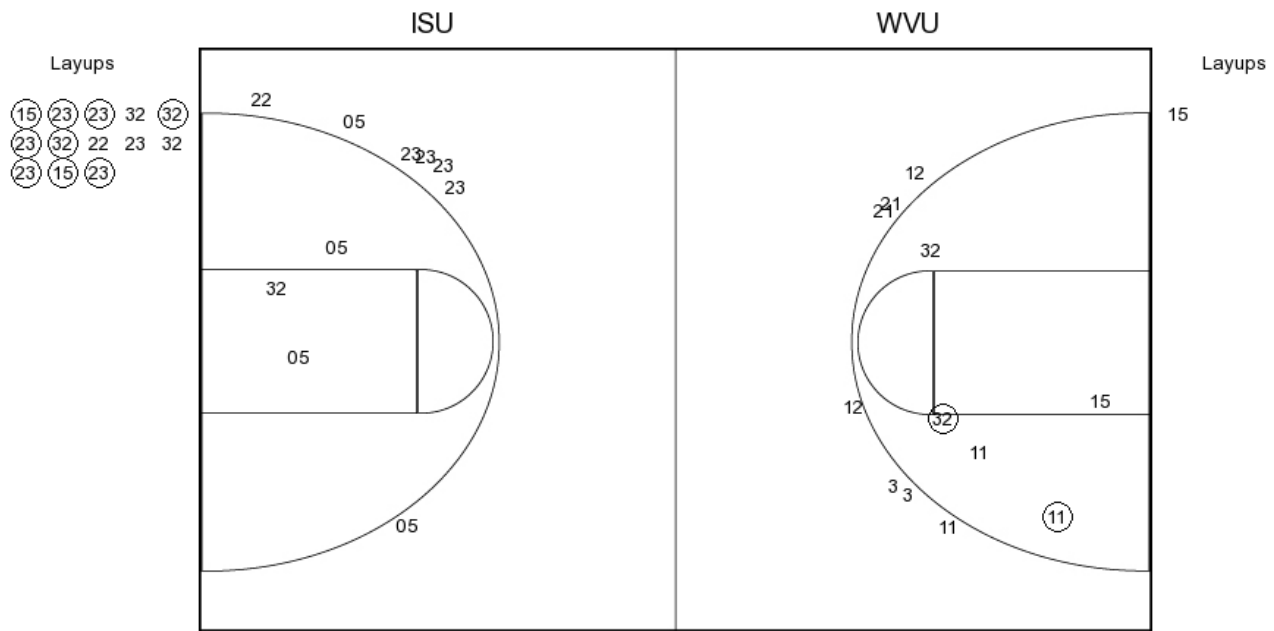
FG Made	11
FG Attempted	33
3PFG Made	0
3PFG Attempted	9

Iowa State vs West Virginia

OFFICIAL SHOT CHART

2/10/2016 at WVU Coliseum, Morgantown, W.Va.

PERIOD 2



ISU PERIOD 2

- FG Made
- FG Attempted
- 3PFG Made
- 3PFG Attempted

WVU PERIOD 2

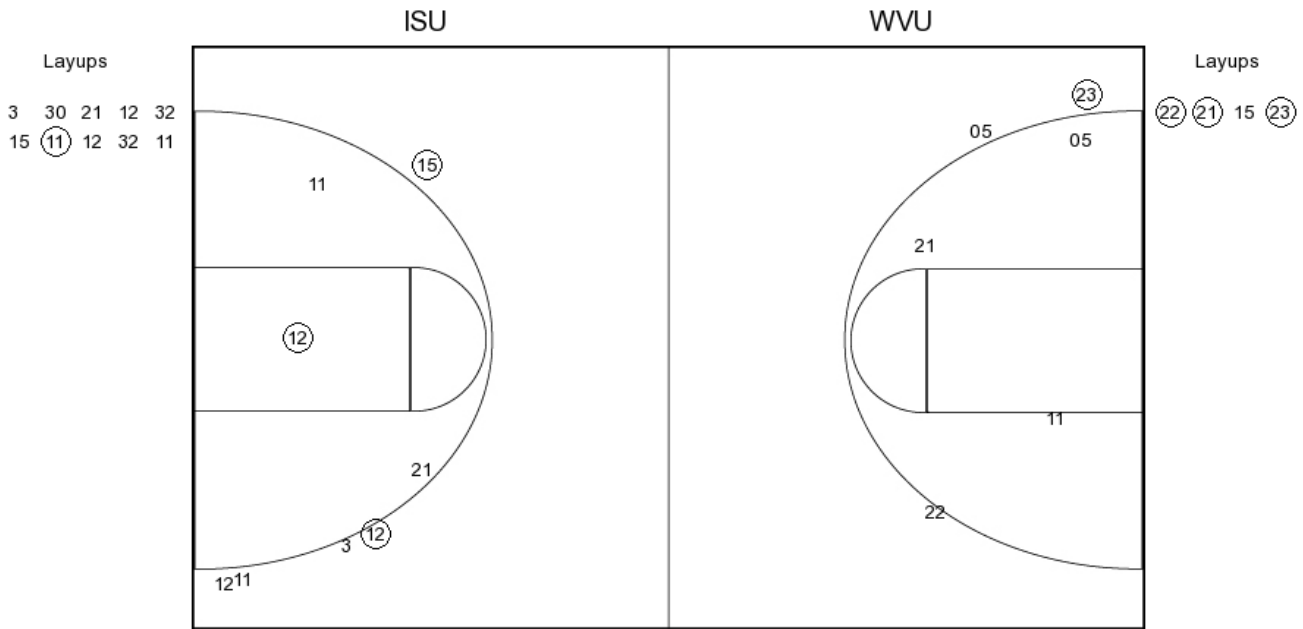
- FG Made
- FG Attempted
- 3PFG Made
- 3PFG Attempted

Iowa State vs West Virginia

OFFICIAL SHOT CHART

2/10/2016 at WVU Coliseum, Morgantown, W.Va.

PERIOD 3



ISU PERIOD 3

FG Made	9
FG Attempted	33
3PFG Made	2
3PFG Attempted	12

WVU PERIOD 3

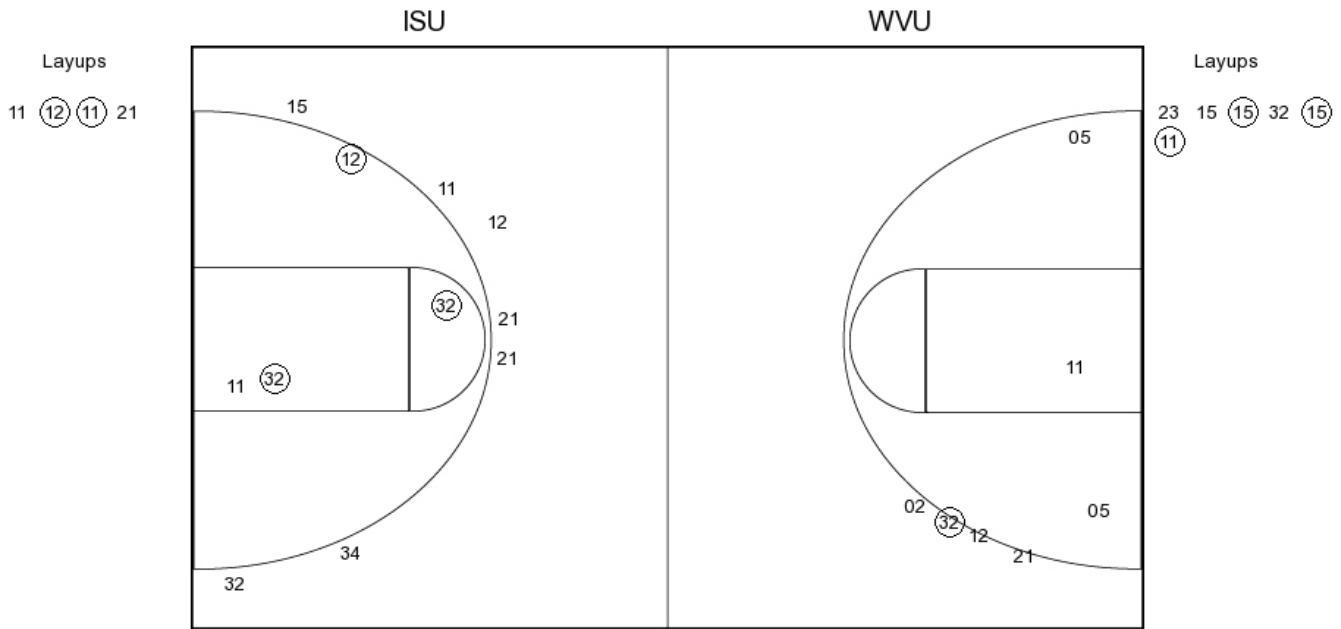
FG Made	8
FG Attempted	23
3PFG Made	2
3PFG Attempted	7

Iowa State vs West Virginia

OFFICIAL SHOT CHART

2/10/2016 at WVU Coliseum, Morgantown, W.Va.

PERIOD 4



ISU PERIOD 4

FG Made
FG Attempted
3PFG Made
3PFG Attempted

WVU PERIOD 4

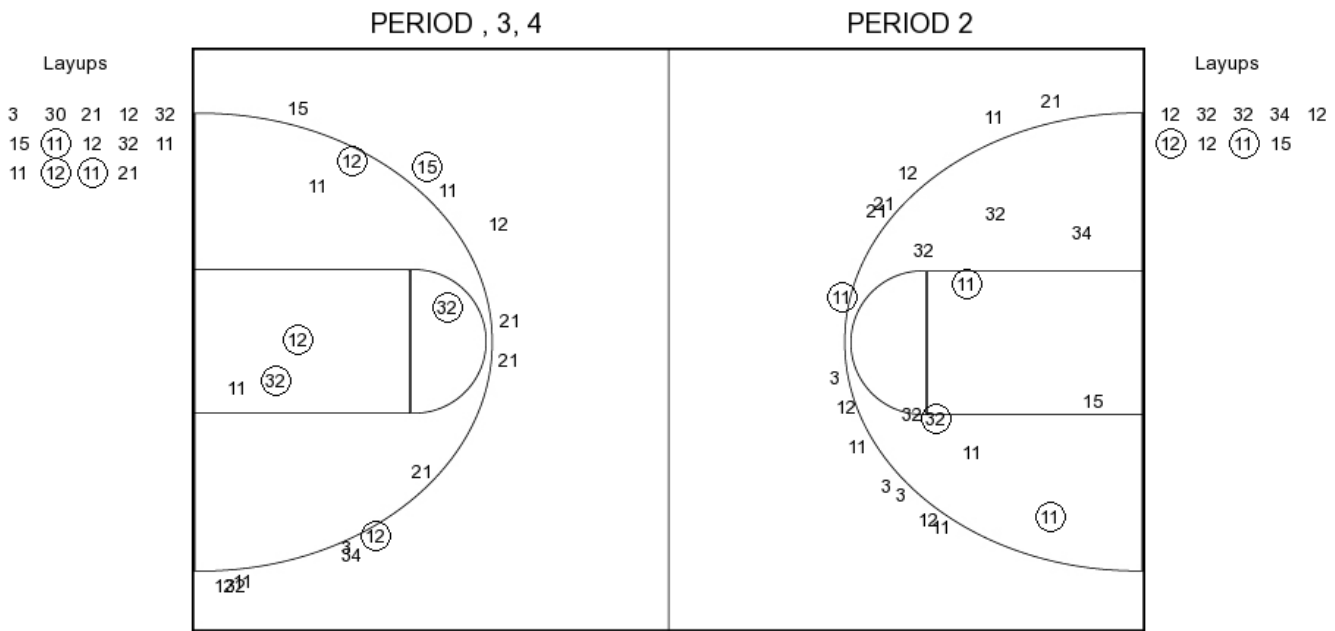
FG Made
FG Attempted
3PFG Made
3PFG Attempted

Iowa State vs West Virginia

OFFICIAL SHOT CHART

2/10/2016 at WVU Coliseum, Morgantown, W.Va.

Iowa State



ISU PERIOD 1

FG Made	6
FG Attempted	28
3PFG Made	1
3PFG Attempted	11

ISU PERIOD 2

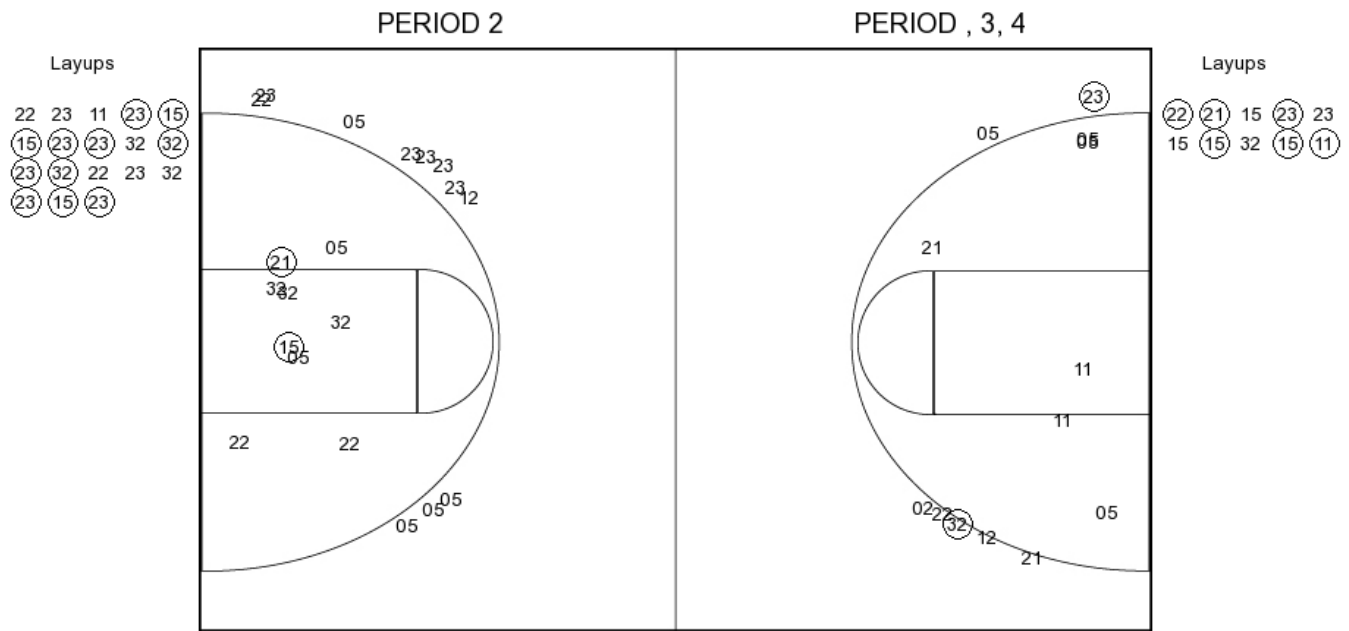
FG Made	
FG Attempted	
3PFG Made	
3PFG Attempted	

Iowa State vs West Virginia

OFFICIAL SHOT CHART

2/10/2016 at WVU Coliseum, Morgantown, W.Va.

West Virginia



WVU PERIOD 1

FG Made	11
FG Attempted	33
3PFG Made	0
3PFG Attempted	9

WVU PERIOD 2

FG Made	
FG Attempted	
3PFG Made	
3PFG Attempted	