



WEST VIRGINIA VS. KANSAS STATE

2/6/2016

WVU Coliseum, Morgantown, W.Va.

FINAL STATS

West Virginia

(18-6, 7-4)

64

Kansas State

(14-8, 4-7)

44

Start Time: 1:00 p.m.

Officials: Laura Morris, Amy Bonner, Roy Gulbeyan

Attendance: 4328

Start Time: 1:06 End Time: 2:52

Official Basketball Box Score -- Game Totals -- Final Statistics

Kansas State vs West Virginia

2/6/2016 1:00 p.m. at WVU Coliseum, Morgantown, W.Va.

Kansas State 44 - 14-8, 4-7

##	Player	S	Total			Rebounds			PF	TP	A	TO	Blk	Stl	Min
			FG-FGA	3PT FG-FGA	FT-FTA	Off Reb	Def Reb	Tot Reb							
01	PAGE,KAYLEE	f	2-8	1-7	0-0	0	0	0	3	5	2	1	0	0	22
15	DEINES,MEGAN	g	1-4	0-2	0-0	0	1	1	2	2	2	1	0	0	28
22	LEWIS,BREANNA	c	3-6	0-0	2-4	2	3	5	4	8	0	3	1	1	25
24	WESEMANN,KINDRED	g	5-18	4-13	0-0	0	2	2	3	14	1	3	0	2	34
50	MARTIN,SHAELYN	g	1-4	0-1	1-4	0	6	6	2	3	0	0	0	1	31
00	SHEBLE,JESSICA		1-3	0-0	2-2	1	0	1	2	4	0	1	0	0	15
02	YOUNG,ERICA		0-1	0-0	0-0	1	0	1	0	0	0	1	0	0	4
10	GOTH,KAYLA		1-3	0-1	1-2	0	0	0	0	3	0	0	0	2	11
11	TAYLOR,ANTOINETTE		1-4	0-2	1-1	0	0	0	0	3	0	2	0	0	9
12	THOMSON,KELLY		0-1	0-1	0-0	0	0	0	0	0	0	1	0	0	9
20	CRAIG,BRI		0-4	0-2	0-0	0	0	0	1	0	0	0	0	1	7
23	HAMMAKER,ANNA		1-2	0-0	0-0	0	0	0	0	2	0	1	0	1	5
TEAM						5	1	6	0		0				
TOTALS			16-58	5-29	7-13	9	13	22	17	44	5	14	1	8	200

Deadball Rebounds: 4,0

FG %	1st Half: 9-31 29.0%	2nd Half: 7-27 25.9%	Game: 16-58 27.6%
3FG %	1st Half: 4-16 25.0%	2nd Half: 5-15 33.3%	Game: 3-13 23.1%
FT %	1st Half: 4-17 23.5%	2nd Half: 1-12 8.3%	Game: 5-29 17.2%
	1st Qtr: 1-7 14.3%	2nd Qtr: 3-10 30.0%	3rd Qtr: 0-7 00.0%
	1st Half: 1-2 50.0%	2nd Half: 6-11 54.5%	Game: 7-13 53.8%
	1st Qtr: 1-2 50.0%	2nd Qtr: 0-0 0%	3rd Qtr: 5-8 62.5%
			4th Qtr: 1-5 20.0%
			4th Qtr: 1-3 33.3%

West Virginia 64 - 18-6, 7-4

##	Player	S	Total			Rebounds			PF	TP	A	TO	Blk	Stl	Min
			FG-FGA	3PT FG-FGA	FT-FTA	Off Reb	Def Reb	Tot Reb							
12	RAY,CHANIA	g	1-1	0-0	0-0	1	2	3	2	2	1	3	0	1	10
15	MONTGOMERY,LANAY	c	3-4	0-0	1-4	1	1	2	2	7	1	5	2	2	27
22	PARDEE,KATRINA	g	3-7	2-5	2-2	1	3	4	1	10	1	2	0	0	17
23	HOLMES,BRIA	g	7-12	1-2	2-3	3	8	11	1	17	5	4	1	0	36
32	ROBERSON,ARIELLE	f	3-5	1-1	1-4	4	9	13	2	8	1	2	2	2	31
02	BREWER,ALEXIS		0-0	0-0	0-0	0	0	0	1	0	0	0	0	0	6
03	SEGGIE,OLIVIA		0-0	0-0	0-2	0	0	0	0	0	4	1	0	1	18
05	MARTIN,TYNICE		4-9	0-3	0-0	0	3	3	0	8	2	1	1	1	21
11	MULDROW,TEANA		4-5	1-1	1-2	0	6	6	3	10	1	2	3	1	20
20	RHODES,DESIREE		1-1	0-0	0-0	0	0	0	0	2	0	0	0	0	1
21	MORTON,JESSICA		0-1	0-0	0-0	0	2	2	4	0	1	3	0	0	12
24	MARTIN,ANJA		0-0	0-0	0-0	0	0	0	0	0	0	0	0	0	1
TEAM						0	1	1	0		0				
TOTALS			26-45	5-12	7-17	10	35	45	16	64	17	23	9	8	200

Deadball Rebounds: 6,0

FG %	1st Half: 13-26 50.0%	2nd Half: 13-19 68.4%	Game: 26-45 57.8%
3FG %	1st Half: 7-14 50.0%	2nd Half: 6-12 50.0%	Game: 6-10 60.0%
FT %	1st Half: 3-7 42.9%	2nd Half: 2-5 40.0%	Game: 5-12 41.7%
	1st Qtr: 1-3 33.3%	2nd Qtr: 2-4 50.0%	3rd Qtr: 1-3 33.3%
	1st Half: 1-7 14.3%	2nd Half: 6-10 60.0%	Game: 7-17 41.2%
	1st Qtr: 1-3 33.3%	2nd Qtr: 0-4 00.0%	3rd Qtr: 4-6 66.7%
			4th Qtr: 2-4 50.0%

Officials: Laura Morris, Amy Bonner, Roy Gulbeyan
 Technical Fouls: Kansas State- None. West Virginia- None.
 Attendance: 4328
 Start Time: 1:06 End Time: 2:52

Score by periods	1st	2nd	3rd	4th	Total
Kansas State	10	13	11	10	44
West Virginia	16	14	17	17	64

Points	In Paint	Off T/O	2nd Chance	Fast Break	Bench
K-STATE	22	19	2	6	12
WVU	34	21	2	6	20

Last FG - K-STATE 4th-01:02, WVU 4th-00:40.
 Largest lead - Kansas State by 1 1st-08:41; West Virginia by 23 4th-06:19
 K-STATE led for 0:58. WVU led for 38:16. Game was tied for 0:46.

Score tied - 0 times
 Lead changed - 2 times

Official Basketball Box Score -- Game Totals -- First Half Statistics
Kansas State vs West Virginia
2/6/2016 1:00 p.m. at WVU Coliseum, Morgantown, W.Va.

Kansas State 23 • 14-8, 4-7

##	Player	S	Total			3-Ptr			Rebounds			PF	TP	A	TO	Blk	Stl	Min		
			FG	FGA	FT	FTA	3PT	FG	FGA	FT	FTA								Off Reb	Def Reb
01	PAGE,KAYLEE	f	2	5	0	0	1	4	0	0	0	0	2	5	2	1	0	0	14	
15	DEINES,MEGAN	g	1	3	0	0	0	1	0	0	1	1	2	2	1	0	0	0	13	
22	LEWIS,BREANNA	c	1	4	0	0	0	0	2	2	2	4	2	2	0	2	1	0	14	
24	WESEMANN,KINDRED	g	3	12	0	0	3	9	0	0	2	2	1	9	0	2	0	1	20	
50	MARTIN,SHAELYN	g	0	1	0	0	0	0	0	5	5	0	0	0	0	0	0	0	16	
00	SHEBLE,JESSICA		1	1	0	0	0	0	0	0	0	2	2	0	1	0	0	5		
02	YOUNG,ERICA		0	0	0	0	0	0	0	0	0	0	0	0	1	0	0	2		
10	GOTH,KAYLA		1	3	0	1	2	0	0	0	0	0	3	0	0	0	2	6		
11	TAYLOR,ANTOINETTE		0	1	0	0	0	0	0	0	0	0	0	0	2	0	0	3		
12	THOMSON,KELLY		0	0	0	0	0	0	0	0	0	0	0	0	0	0	0	5		
20	CRAIG,BRI		0	1	0	0	0	0	0	0	0	0	0	0	0	0	0	2		
23	HAMMAKER,ANNA		0	0	0	0	0	0	0	0	0	0	0	0	0	0	0	0		
TEAM									3	0	3	0			0					
Totals			9	31	1	2	4	17	1	2	5	10	15	9	23	3	9	1	3	100
FG %	1st Qtr	4-16	25.0%	2nd Qtr	5-15	33.3%	Half:	9-31	29.0%											
3FG %	1st Qtr	1-7	14.3%	2nd Qtr	3-10	30.0%	Half:	4-17	23.5%											
FT %	1st Qtr	1-2	50.0%	2nd Qtr	0-0	0%	Half:	1-2	50.0%											

West Virginia 30 • 18-6, 7-4

##	Player	S	Total			3-Ptr			Rebounds			PF	TP	A	TO	Blk	Stl	Min	
			FG	FGA	FT	FTA	3PT	FG	FGA	FT	FTA								Off Reb
12	RAY.CHANIA	g	1	1	0	0	0	0	1	2	3	0	2	0	3	0	0	6	
15	MONTGOMERY.LANAY	c	1	2	0	0	0	2	0	1	1	1	2	0	3	0	1	15	
22	PARDEE,KATRINA	g	2	5	0	0	1	3	0	0	0	1	5	0	1	0	0	9	
23	HOLMES,BRIA	g	5	7	1	1	1	1	1	3	4	1	12	3	2	1	0	18	
32	ROBERSON,ARIELLE	f	3	5	1	1	0	2	4	5	9	0	7	1	0	1	2	17	
02	BREWER,ALEXIS		0	0	0	0	0	0	0	0	0	1	0	0	0	0	0	4	
03	SEGGIE,OLIVIA		0	0	0	0	0	2	0	0	0	0	0	1	1	0	1	9	
05	MARTIN,TYNICE		0	4	0	2	0	0	0	1	1	0	0	1	0	0	1	9	
11	MULDROW,TEANA		1	1	0	0	0	0	0	3	3	0	2	1	1	1	1	8	
20	RHODES,DESIREE		0	0	0	0	0	0	0	0	0	0	0	0	0	0	0	0	
21	MORTON,JESSICA		0	1	0	0	0	0	0	1	1	2	0	0	1	0	0	5	
24	MARTIN,ANJA		0	0	0	0	0	0	0	0	0	0	0	0	0	0	0	0	
TEAM									0	1	1	0			0				
Totals			13	26	3	7	1	7	6	17	23	6	30	7	12	3	6	100	
FG %	1st Qtr	7-14	50.0%	2nd Qtr	6-12	50.0%	Half:	13-26	50.0%										
3FG %	1st Qtr	1-3	33.3%	2nd Qtr	2-4	50.0%	Half:	3-7	42.9%										
FT %	1st Qtr	1-3	33.3%	2nd Qtr	0-4	00.0%	Half:	1-7	14.3%										

Officials: Laura Morris, Amy Bonner, Roy Gulbeyan
 Technical Fouls: Kansas State- None. West Virginia- None.
 Start Time: 1:06 End Time: 2:52

Score by periods	1st	2nd	3rd	4th	Total
Kansas State	10	13	11	10	44
West Virginia	16	14	17	17	64

Points	In Paint	Off T/O	2nd 2nd Chance	Fast Fast Break	Bench
K-STATE	10	10	2	4	5
West Virginia	18	12	8	4	2

Last FG - K-STATE 2nd-00:42, WVU 2nd-00:03.
 K-STATE led for 0:58. WVU led for 18:16. Game was tied for 0:46.

Score tied - 0 times
 Lead changed - 2 times

Kansas State vs West Virginia
2/6/2016; 1:00 p.m. at WVU Coliseum, Morgantown, W.Va.
Period 1 Play-By-Play

VISITORS: Kansas State	Time	Score	Margin	HOME: West Virginia
	09:50			MISSED 3PTR by PARDEE,KATRINA
REBOUND (DEF) by DEINES,MEGAN	09:50			
MISSED 3PTR by WESEMANN,KINDRED	09:33			
	09:33			REBOUND (DEF) by RAY,CHANIA
	09:14	2-0	H 2	GOOD! LAYUP by PARDEE,KATRINA [PNT]
	09:14			ASSIST by HOLMES,BRIA
GOOD! 3PTR by WESEMANN,KINDRED	08:41	2-3	V 1	
ASSIST by PAGE,KAYLEE	08:41			
	08:27			MISSED JUMPER by ROBERSON,ARIELLE
REBOUND (DEF) by MARTIN,SHAELYN	08:27			
TURNOVER by LEWIS,BREANNA	07:59			
	07:58			STEAL by MONTGOMERY,LANAY
FOUL by DEINES,MEGAN	07:55			
	07:43	5-3	H 2	GOOD! 3PTR by PARDEE,KATRINA
	07:43			ASSIST by HOLMES,BRIA
TURNOVER by LEWIS,BREANNA	07:18			
	07:10			TURNOVER by PARDEE,KATRINA
SUB IN: GOTH,KAYLA	07:10			
SUB OUT: PAGE,KAYLEE	07:10			
MISSED JUMPER by GOTH,KAYLA	06:53			
	06:53			REBOUND (DEF) by HOLMES,BRIA
	06:42	7-3	H 4	GOOD! JUMPER by HOLMES,BRIA [PNT]
MISSED 3PTR by WESEMANN,KINDRED	06:22			
	06:22			REBOUND (DEF) by MONTGOMERY,LANAY
	06:13			TURNOVER by RAY,CHANIA
	06:13			SUB IN: MORTON,JESSICA
	06:13			SUB OUT: RAY,CHANIA
MISSED 3PTR by WESEMANN,KINDRED	05:46			
	05:46			BLOCK by ROBERSON,ARIELLE
	05:42			REBOUND (DEF) by MORTON,JESSICA
	05:40			TURNOVER by MORTON,JESSICA
	05:40			FOUL by MORTON,JESSICA
SUB IN: PAGE,KAYLEE	05:40			
SUB OUT: MARTIN,SHAELYN	05:40			
GOOD! LAYUP by PAGE,KAYLEE [PNT]	05:26	7-5	H 2	
	05:10	9-5	H 4	GOOD! LAYUP by MONTGOMERY,LANAY [PNT]
	05:10			ASSIST by ROBERSON,ARIELLE
MISSED JUMPER by WESEMANN,KINDRED	04:44			
	04:44			REBOUND (DEF) by HOLMES,BRIA
	04:37			MISSED JUMPER by HOLMES,BRIA
	04:37			REBOUND (OFF) by HOLMES,BRIA
	04:33	11-5	H 6	GOOD! LAYUP by HOLMES,BRIA [PNT]
MISSED JUMPER by WESEMANN,KINDRED	04:08			
	04:08			REBOUND (DEF) by TEAM
	04:06			FOUL by PARDEE,KATRINA
TIMEOUT MEDIA	04:06			
SUB IN: TAYLOR,ANTOINETTE	04:06			
SUB OUT: GOTH,KAYLA	04:06			
	04:06			SUB IN: MULDROW,TEANA
	04:06			SUB IN: MARTIN,TYNICE
	04:06			SUB OUT: MONTGOMERY,LANAY
	04:06			SUB OUT: PARDEE,KATRINA
MISSED JUMPER by LEWIS,BREANNA	04:02			

VISITORS: Kansas State	Time	Score	Margin	HOME: West Virginia
	04:02			REBOUND (DEF) by ROBERSON,ARIELLE
FOUL by LEWIS,BREANNA	03:52			
	03:52			MISSED FT by ROBERSON,ARIELLE
	03:52			REBOUND (DEADB) by TEAM
	03:52			MISSED FT by ROBERSON,ARIELLE
REBOUND (DEF) by LEWIS,BREANNA	03:52			
TURNOVER by PAGE,KAYLEE	03:38			
	03:37			STEAL by MARTIN,TYNICE
	03:32	13-5	H 8	GOOD! LAYUP by HOLMES,BRIA [FB/PNT]
FOUL by PAGE,KAYLEE	03:32			
	03:32	14-5	H 9	GOOD! FT by HOLMES,BRIA
TURNOVER by TAYLOR,ANTOINETTE	03:08			
	03:07			STEAL by ROBERSON,ARIELLE
	03:03			MISSED LAYUP by MORTON,JESSICA
REBOUND (DEF) by WESEMANN,KINDRED	03:03			
GOOD! LAYUP by DEINES,MEGAN [PNT]	02:53	14-7	H 7	
	02:42			MISSED JUMPER by MARTIN,TYNICE
	02:42			REBOUND (OFF) by ROBERSON,ARIELLE
FOUL by PAGE,KAYLEE	02:39			
SUB IN: MARTIN,SHAELYN	02:39			
SUB OUT: PAGE,KAYLEE	02:39			
	02:39			SUB IN: MONTGOMERY,LANAY
	02:39			SUB OUT: ROBERSON,ARIELLE
	02:31			TURNOVER by MONTGOMERY,LANAY
SUB IN: GOTH,KAYLA	02:18			
SUB OUT: MARTIN,SHAELYN	02:18			
TURNOVER by TAYLOR,ANTOINETTE	02:07			
	02:03			STEAL by MULDROW,TEANA
	01:55	16-7	H 9	GOOD! LAYUP by MULDROW,TEANA [PNT]
	01:55			ASSIST by MARTIN,TYNICE
MISSED 3PTR by TAYLOR,ANTOINETTE	01:30			
	01:30			BLOCK by MULDROW,TEANA
SUB IN: MARTIN,SHAELYN	01:29			
SUB OUT: TAYLOR,ANTOINETTE	01:29			
REBOUND (OFF) by TEAM	01:28			
MISSED JUMPER by MARTIN,SHAELYN	01:27			
	01:27			BLOCK by HOLMES,BRIA
	01:25			REBOUND (DEF) by HOLMES,BRIA
	01:17			MISSED 3PTR by MARTIN,TYNICE
REBOUND (DEF) by LEWIS,BREANNA	01:17			
	01:08			FOUL by MORTON,JESSICA
MISSED FT by GOTH,KAYLA	01:08			
REBOUND (DEADB) by TEAM	01:08			
GOOD! FT by GOTH,KAYLA	01:08	16-8	H 8	
SUB IN: CRAIG,BRI	01:08			
SUB OUT: DEINES,MEGAN	01:08			
	01:08			SUB IN: RAY,CHANIA
	01:08			SUB OUT: HOLMES,BRIA
	01:06			MISSED LAYUP by MONTGOMERY,LANAY
BLOCK by LEWIS,BREANNA	01:06			
	01:06			SUB IN: BREWER,ALEXIS
	01:06			SUB OUT: MORTON,JESSICA
	01:04			REBOUND (OFF) by RAY,CHANIA
	00:53			TURNOVER by MONTGOMERY,LANAY
	00:53			FOUL by MONTGOMERY,LANAY
MISSED 3PTR by CRAIG,BRI	00:41			
REBOUND (OFF) by TEAM	00:41			
MISSED 3PTR by WESEMANN,KINDRED	00:29			

VISITORS: Kansas State	Time	Score	Margin	HOME: West Virginia
REBOUND (OFF) by LEWIS,BREANNA	00:29			
MISSED JUMPER by LEWIS,BREANNA	00:25			
	00:25			REBOUND (DEF) by RAY,CHANIA
	00:10			TURNOVER by RAY,CHANIA
STEAL by GOTH,KAYLA	00:09			
GOOD! LAYUP by GOTH,KAYLA [FB/PNT]	00:07	16-10	H 6	

Kansas State 10, West Virginia 16

Period 1-only	In Paint	Off T/O	2nd Chance	Fast Break	Bench	
K-STATE	6	4	0	2	3	Score tied - 0 times
WVU	12	8	2	2	2	Lead changed - 2 times

Kansas State vs West Virginia
2/6/2016; 1:00 p.m. at WVU Coliseum, Morgantown, W.Va.
Period 2 Play-By-Play

VISITORS: Kansas State	Time	Score	Margin	HOME: West Virginia
SUB IN: GOTH,KAYLA	10:00			
SUB IN: CRAIG,BRI	10:00			
SUB OUT: PAGE,KAYLEE	10:00			
SUB OUT: DEINES,MEGAN	10:00			
	10:00			SUB IN: MULDROW,TEANA
	10:00			SUB IN: MARTIN,TYNICE
	10:00			SUB IN: BREWER,ALEXIS
	10:00			SUB OUT: MONTGOMERY,LANAY
	10:00			SUB OUT: PARDEE,KATRINA
	10:00			SUB OUT: HOLMES,BRIA
MISSED LAYUP by LEWIS,BREANNA	09:47			
	09:47			REBOUND (DEF) by MULDROW,TEANA
	09:20			TURNOVER by RAY,CHANIA
SUB IN: DEINES,MEGAN	09:20			
SUB OUT: GOTH,KAYLA	09:20			
	09:20			SUB IN: SEGGIE,OLIVIA
	09:20			SUB OUT: RAY,CHANIA
TURNOVER by WESEMANN,KINDRED	09:11			
	09:10			STEAL by ROBERSON,ARIELLE
	09:08	18-10	H 8	GOOD! LAYUP by ROBERSON,ARIELLE [FB/PNT]
MISSED 3PTR by DEINES,MEGAN	08:49			
	08:49			REBOUND (DEF) by MULDROW,TEANA
	08:34			TURNOVER by MULDROW,TEANA
SUB IN: PAGE,KAYLEE	08:34			
SUB OUT: CRAIG,BRI	08:34			
	08:34			SUB IN: PARDEE,KATRINA
	08:34			SUB IN: HOLMES,BRIA
	08:34			SUB OUT: MARTIN,TYNICE
	08:34			SUB OUT: BREWER,ALEXIS
MISSED 3PTR by PAGE,KAYLEE	08:24			
	08:24			REBOUND (DEF) by ROBERSON,ARIELLE
FOUL by LEWIS,BREANNA	08:13			
SUB IN: SHEBLE,JESSICA	08:13			
SUB OUT: LEWIS,BREANNA	08:13			
	07:50			MISSED JUMPER by HOLMES,BRIA
	07:50			REBOUND (OFF) by ROBERSON,ARIELLE
	07:47			MISSED JUMPER by ROBERSON,ARIELLE
REBOUND (DEF) by MARTIN,SHAELYN	07:47			
MISSED 3PTR by WESEMANN,KINDRED	07:33			
	07:33			REBOUND (DEF) by MULDROW,TEANA
	07:22	20-10	H 10	GOOD! LAYUP by ROBERSON,ARIELLE [PNT]
	07:22			ASSIST by MULDROW,TEANA
TIMEOUT 30SEC	07:20			
MISSED JUMPER by DEINES,MEGAN	07:10			
	07:10			REBOUND (DEF) by ROBERSON,ARIELLE
	06:55			MISSED JUMPER by PARDEE,KATRINA
REBOUND (DEF) by WESEMANN,KINDRED	06:55			
GOOD! LAYUP by SHEBLE,JESSICA [FB/PNT]	06:48	20-12	H 8	
ASSIST by PAGE,KAYLEE	06:48			
	06:28			MISSED 3PTR by PARDEE,KATRINA
REBOUND (DEF) by MARTIN,SHAELYN	06:28			
GOOD! 3PTR by PAGE,KAYLEE	06:04	20-15	H 5	
ASSIST by DEINES,MEGAN	06:04			

VISITORS: Kansas State	Time	Score	Margin	HOME: West Virginia
	05:45			TURNOVER by SEGGIE,OLIVIA
	05:41			SUB IN: MARTIN,TYNICE
	05:41			SUB IN: MONTGOMERY,LANAY
	05:41			SUB OUT: MULDROW,TEANA
	05:41			SUB OUT: PARDEE,KATRINA
MISSED 3PTR by PAGE,KAYLEE	05:25			
	05:25			REBOUND (DEF) by MARTIN,TYNICE
FOUL by DEINES,MEGAN	05:17			
SUB IN: THOMSON,KELLY	05:08			
SUB OUT: DEINES,MEGAN	05:08			
	05:00			TURNOVER by HOLMES,BRIA
	05:00			FOUL by HOLMES,BRIA
GOOD! 3PTR by WESEMANN,KINDRED	04:47	20-18	H 2	
FOUL by SHEBLE,JESSICA	04:18			
FOUL by SHEBLE,JESSICA	04:10			
	04:10			MISSED FT by MONTGOMERY,LANAY
	04:10			REBOUND (DEADB) by TEAM
	04:10			MISSED FT by MONTGOMERY,LANAY
	04:10			REBOUND (OFF) by ROBERSON,ARIELLE
SUB IN: YOUNG,ERICA	04:10			
SUB OUT: SHEBLE,JESSICA	04:10			
	04:07	23-18	H 5	GOOD! 3PTR by HOLMES,BRIA
	04:07			ASSIST by SEGGIE,OLIVIA
TURNOVER by WESEMANN,KINDRED	03:51			
	03:31			MISSED 3PTR by MARTIN,TYNICE
REBOUND (DEF) by MARTIN,SHAELYN	03:31			
MISSED 3PTR by WESEMANN,KINDRED	03:16			
	03:16			REBOUND (DEF) by ROBERSON,ARIELLE
	03:02			MISSED JUMPER by MARTIN,TYNICE
	03:02			REBOUND (OFF) by ROBERSON,ARIELLE
	02:39	26-18	H 8	GOOD! 3PTR by ROBERSON,ARIELLE
	02:39			ASSIST by HOLMES,BRIA
TURNOVER by YOUNG,ERICA	02:12			
	02:11			STEAL by SEGGIE,OLIVIA
FOUL by WESEMANN,KINDRED	02:11			
	02:11			MISSED FT by SEGGIE,OLIVIA
	02:11			REBOUND (DEADB) by TEAM
	02:11			MISSED FT by SEGGIE,OLIVIA
REBOUND (DEF) by MARTIN,SHAELYN	02:11			
SUB IN: LEWIS,BREANNA	02:11			
SUB OUT: YOUNG,ERICA	02:11			
	02:11			SUB IN: BREWER,ALEXIS
	02:11			SUB OUT: MARTIN,TYNICE
	01:59			FOUL by BREWER,ALEXIS
MISSED 3PTR by PAGE,KAYLEE	01:47			
	01:47			REBOUND (DEF) by ROBERSON,ARIELLE
	01:36	28-18	H 10	GOOD! JUMPER by HOLMES,BRIA
MISSED LAYUP by WESEMANN,KINDRED	01:13			
REBOUND (OFF) by LEWIS,BREANNA	01:13			
GOOD! JUMPER by LEWIS,BREANNA [PNT]	01:10	28-20	H 8	
	00:55			TURNOVER by HOLMES,BRIA
STEAL by WESEMANN,KINDRED	00:53			
GOOD! 3PTR by WESEMANN,KINDRED	00:42	28-23	H 5	
SUB IN: GOTH,KAYLA	00:25			
SUB IN: SHEBLE,JESSICA	00:25			
SUB OUT: PAGE,KAYLEE	00:25			
SUB OUT: LEWIS,BREANNA	00:25			
	00:25			SUB IN: RAY,CHANIA

VISITORS: Kansas State	Time	Score	Margin	HOME: West Virginia
	00:25			SUB OUT: SEGGIE,OLIVIA
	00:22			TURNOVER by MONTGOMERY,LANAY
STEAL by GOTH,KAYLA	00:21			
MISSED 3PTR by GOTH,KAYLA	00:12			
REBOUND (OFF) by TEAM	00:12			
TURNOVER by SHEBLE,JESSICA	00:08			
	00:03	30-23	H 7	GOOD! LAYUP by RAY,CHANIA [PNT]

Kansas State 23, West Virginia 30

Period 2-only	In Paint	Off T/O	2nd Chance	Fast Break	Bench	
K-STATE	4	6	2	2	2	Score tied - 0 times
WVU	6	4	6	2	0	Lead changed - 0 times

Official Basketball Box Score -- Game Totals -- Second Half Statistics
Kansas State vs West Virginia
2/6/2016 1:00 p.m. at WVU Coliseum, Morgantown, W.Va.

Kansas State 21 • 14-8, 4-7

##	Player	S	Total			3-Ptr			Rebounds			PF	TP	A	TO	Blk	Stl	Min
			FG-FGA	3PT	FG-FGA	FT-FTA	Off Reb	Def Reb	Tot Reb									
01	PAGE,KAYLEE	f	0-3	0-3	0-0	0	0	0	1	0	0	0	0	0	0	0	8	
15	DEINES,MEGAN	g	0-1	0-1	0-0	0	0	0	0	0	1	1	0	0	0	15		
22	LEWIS,BREANNA	c	2-2	0-0	2-4	0	1	1	2	6	0	1	0	1	1	11		
24	WESEMANN,KINDRED	g	2-6	1-4	0-0	0	0	0	2	5	1	1	0	1	14			
50	MARTIN,SHAELYN	g	1-3	0-1	1-4	0	1	1	2	3	0	0	0	1	15			
00	SHEBLE,JESSICA		0-2	0-0	2-2	1	0	1	0	2	0	0	0	0	10			
02	YOUNG,ERICA		0-1	0-0	0-0	1	0	1	0	0	0	0	0	0	2			
10	GOTH,KAYLA		0-0	0-0	0-0	0	0	0	0	0	0	0	0	0	5			
11	TAYLOR,ANTOINETTE		1-3	0-1	1-1	0	0	0	0	3	0	0	0	0	6			
12	THOMSON,KELLY		0-1	0-1	0-0	0	0	0	0	0	0	1	0	0	4			
20	CRAIG,BRI		0-3	0-1	0-0	0	0	0	1	0	0	0	0	1	5			
23	HAMMAKER,ANNA		1-2	0-0	0-0	0	0	0	0	2	0	1	0	1	5			
TEAM						2	1	3	0		0							
Totals			7-27	1-12	6-11	4	3	7	8	21	2	5	0	5	100			
FG %	3rd Qtr	3-13	23.1%	4th Qtr	4-14	28.6%	Half:	7-27	25.9%									
3FG %	3rd Qtr	0-7	00.0%	4th Qtr	1-5	20.0%	Half:	1-12	23.5%									
FT %	3rd Qtr	5-8	62.5%	4th Qtr	1-3	33.3%	Half:	6-11	54.5%									

West Virginia 34 • 18-6, 7-4

##	Player	S	Total			3-Ptr			Rebounds			PF	TP	A	TO	Blk	Stl	Min
			FG-FGA	3PT	FG-FGA	FT-FTA	Off Reb	Def Reb	Tot Reb									
12	RAY,CHANIA	g	0-0	0-0	0-0	0	0	0	2	0	1	0	0	1	4			
15	MONTGOMERY,LANAY	c	2-2	0-0	1-2	1	0	1	1	5	1	2	2	1	12			
22	PARDEE,KATRINA	g	1-2	1-2	2-2	1	3	4	0	5	1	1	0	0	8			
23	HOLMES,BRIA	g	2-5	0-1	1-2	2	5	7	0	5	2	2	0	0	18			
32	ROBERSON,ARIELLE	f	0-0	0-0	1-2	0	4	4	2	1	0	2	1	0	14			
02	BREWER,ALEXIS		0-0	0-0	0-0	0	0	0	0	0	0	0	0	0	2			
03	SEGGIE,OLIVIA		0-0	0-0	0-0	0	0	0	0	0	3	0	0	0	9			
05	MARTIN,TYNICE		4-5	0-1	0-0	0	2	2	0	8	1	1	1	0	12			
11	MULDROW,TEANA		3-4	1-1	1-2	0	3	3	3	8	0	1	2	0	12			
20	RHODES,DESIREE		1-1	0-0	0-0	0	0	0	0	2	0	0	0	0	1			
21	MORTON,JESSICA		0-0	0-0	0-0	0	1	1	2	0	1	2	0	0	7			
24	MARTIN,ANJA		0-0	0-0	0-0	0	0	0	0	0	0	0	0	0	1			
TEAM						0	0	0	0		0							
Totals			13-19	2-5	6-10	4	18	22	10	34	10	11	6	2	100			
FG %	3rd Qtr	6-10	60.0%	4th Qtr	7-9	77.8%	Half:	13-19	68.4%									
3FG %	3rd Qtr	1-3	33.3%	4th Qtr	1-2	50.0%	Half:	2-5	42.9%									
FT %	3rd Qtr	4-6	66.7%	4th Qtr	2-4	50.0%	Half:	6-10	60.0%									

Officials: Laura Morris, Amy Bonner, Roy Gulbeyan
 Technical Fouls: Kansas State- None. West Virginia- None.
 Start Time: 1:06 End Time: 2:52

Score by periods	1st	2nd	3rd	4th	Total
Kansas State	10	13	11	10	44
West Virginia	16	14	17	17	64

Points	In Paint	Off T/O	2nd 2nd Chance	Fast Fast Break	Bench
K-STATE	12	9	0	2	7
	16	9	4	2	18

Last FG - K-STATE 4th-01:02, WVU 4th-00:40.
 K-STATE led for 0:00. WVU led for 20:00. Game was tied for 0:00.

Score tied - 0 times
 Lead changed - 0 times

Kansas State vs West Virginia
2/6/2016; 1:00 p.m. at WVU Coliseum, Morgantown, W.Va.
Period 3 Play-By-Play

VISITORS: Kansas State	Time	Score	Margin	HOME: West Virginia
	09:46			FOUL by RAY,CHANIA
MISSED FT by MARTIN,SHAELYN	09:46			
REBOUND (DEADB) by TEAM	09:46			
GOOD! FT by MARTIN,SHAELYN	09:46	30-24	H 6	
	09:38			MISSED 3PTR by PARDEE,KATRINA
	09:38			REBOUND (OFF) by PARDEE,KATRINA
	09:31	32-24	H 8	GOOD! LAYUP by HOLMES,BRIA [PNT]
MISSED 3PTR by PAGE,KAYLEE	09:25			
	09:25			REBOUND (DEF) by PARDEE,KATRINA
	09:14			TURNOVER by MONTGOMERY,LANAY
	09:14			FOUL by MONTGOMERY,LANAY
MISSED 3PTR by MARTIN,SHAELYN	08:55			
	08:55			REBOUND (DEF) by PARDEE,KATRINA
	08:38			MISSED 3PTR by HOLMES,BRIA
	08:38			REBOUND (OFF) by MONTGOMERY,LANAY
FOUL by LEWIS,BREANNA	08:34			
	08:29			TURNOVER by ROBERSON,ARIELLE
STEAL by LEWIS,BREANNA	08:28			
	08:26			FOUL by ROBERSON,ARIELLE
MISSED 3PTR by DEINES,MEGAN	08:08			
	08:08			REBOUND (DEF) by HOLMES,BRIA
FOUL by WESEMANN,KINDRED	08:00			
	08:00	33-24	H 9	GOOD! FT by PARDEE,KATRINA
	08:00	34-24	H 10	GOOD! FT by PARDEE,KATRINA
TURNOVER by DEINES,MEGAN	07:43			
	07:41			STEAL by RAY,CHANIA
	07:33	36-24	H 12	GOOD! LAYUP by MONTGOMERY,LANAY [PNT]
	07:33			ASSIST by RAY,CHANIA
GOOD! LAYUP by LEWIS,BREANNA [PNT]	07:09	36-26	H 10	
ASSIST by WESEMANN,KINDRED	07:09			
	06:52			TURNOVER by MONTGOMERY,LANAY
STEAL by WESEMANN,KINDRED	06:49			
GOOD! LAYUP by WESEMANN,KINDRED [PNT]	06:45	36-28	H 8	
	06:25			TURNOVER by HOLMES,BRIA
STEAL by MARTIN,SHAELYN	06:24			
	06:03			FOUL by RAY,CHANIA
SUB IN: SHEBLE,JESSICA	06:03			
SUB OUT: LEWIS,BREANNA	06:03			
	06:03			SUB IN: MORTON,JESSICA
	06:03			SUB IN: MULDROW,TEANA
	06:03			SUB OUT: RAY,CHANIA
	06:03			SUB OUT: MONTGOMERY,LANAY
MISSED 3PTR by PAGE,KAYLEE	05:49			
	05:49			BLOCK by MULDROW,TEANA
	05:47			REBOUND (DEF) by ROBERSON,ARIELLE
	05:39			MISSED JUMPER by HOLMES,BRIA
	05:39			REBOUND (OFF) by HOLMES,BRIA
	05:34	38-28	H 10	GOOD! JUMPER by HOLMES,BRIA [PNT]
MISSED 3PTR by WESEMANN,KINDRED	05:12			
	05:12			REBOUND (DEF) by MULDROW,TEANA
	04:56			TIMEOUT MEDIA
FOUL by PAGE,KAYLEE	04:43			
	04:43			MISSED FT by MULDROW,TEANA

VISITORS: Kansas State	Time	Score	Margin	HOME: West Virginia
	04:43			REBOUND (DEADB) by TEAM
	04:43	39-28	H 11	GOOD! FT by MULDRROW,TEANA
MISSED 3PTR by PAGE,KAYLEE	04:19			
	04:19			REBOUND (DEF) by ROBERSON,ARIELLE
	04:07	42-28	H 14	GOOD! 3PTR by PARDEE,KATRINA
	04:07			ASSIST by HOLMES,BRIA
TIMEOUT 30SEC	04:04			
	04:04			SUB IN: MARTIN,TYNICE
	04:04			SUB OUT: PARDEE,KATRINA
MISSED LAYUP by SHEBLE,JESSICA	03:54			
	03:54			BLOCK by MULDRROW,TEANA
	03:51			REBOUND (DEF) by MULDRROW,TEANA
	03:27			TURNOVER by ROBERSON,ARIELLE
SUB IN: LEWIS,BREANNA	03:27			
SUB OUT: SHEBLE,JESSICA	03:27			
MISSED JUMPER by WESEMANN,KINDRED	03:13			
	03:13			REBOUND (DEF) by HOLMES,BRIA
	02:57	44-28	H 16	GOOD! JUMPER by MARTIN,TYNICE
	02:57			ASSIST by MORTON,JESSICA
	02:37			FOUL by MULDRROW,TEANA
GOOD! FT by LEWIS,BREANNA	02:37	44-29	H 15	
GOOD! FT by LEWIS,BREANNA	02:37	44-30	H 14	
	02:19			MISSED LAYUP by MULDRROW,TEANA
REBOUND (DEF) by LEWIS,BREANNA	02:19			
	02:17			FOUL by ROBERSON,ARIELLE
MISSED FT by LEWIS,BREANNA	02:17			
REBOUND (DEADB) by TEAM	02:17			
MISSED FT by LEWIS,BREANNA	02:17			
	02:17			REBOUND (DEF) by HOLMES,BRIA
SUB IN: THOMSON,KELLY	02:17			
SUB OUT: PAGE,KAYLEE	02:17			
FOUL by LEWIS,BREANNA	02:02			
FOUL by WESEMANN,KINDRED	01:51			
	01:51	45-30	H 15	GOOD! FT by ROBERSON,ARIELLE
	01:51			MISSED FT by ROBERSON,ARIELLE
REBOUND (DEF) by MARTIN,SHAELYN	01:51			
SUB IN: SHEBLE,JESSICA	01:51			
SUB OUT: LEWIS,BREANNA	01:51			
	01:39			FOUL by MULDRROW,TEANA
GOOD! FT by SHEBLE,JESSICA	01:39	45-31	H 14	
GOOD! FT by SHEBLE,JESSICA	01:39	45-32	H 13	
	01:30			TURNOVER by MORTON,JESSICA
	01:30			SUB IN: RAY,CHANIA
	01:30			SUB OUT: MORTON,JESSICA
GOOD! JUMPER by MARTIN,SHAELYN [PNT]	01:15	45-34	H 11	
	01:05			SUB IN: SEGGIE,OLIVIA
	01:05			SUB OUT: RAY,CHANIA
	00:51	47-34	H 13	GOOD! LAYUP by MULDRROW,TEANA [PNT]
	00:51			ASSIST by SEGGIE,OLIVIA
MISSED LAYUP by MARTIN,SHAELYN	00:28			
REBOUND (OFF) by SHEBLE,JESSICA	00:28			
MISSED 3PTR by WESEMANN,KINDRED	00:05			
	00:05			REBOUND (DEF) by MULDRROW,TEANA

Kansas State 44, West Virginia 64

	Period 3-only	In In Paint	Off T/O	2nd Chance	Fast Break	Bench	
K-STATE	3-only	6	4	0	0	2	Score tied - 0 times
WVU		8	2	4	0	5	Lead changed - 0 times

Kansas State vs West Virginia
2/6/2016; 1:00 p.m. at WVU Coliseum, Morgantown, W.Va.
Period 4 Play-By-Play

VISITORS: Kansas State	Time	Score	Margin	HOME: West Virginia
SUB IN: THOMSON,KELLY	10:00			
SUB OUT: PAGE,KAYLEE	10:00			
	10:00			SUB IN: MULDROW,TEANA
	10:00			SUB IN: SEGGIE,OLIVIA
	10:00			SUB IN: MARTIN,TYNICE
	10:00			SUB OUT: RAY,CHANIA
	10:00			SUB OUT: PARDEE,KATRINA
	10:00			SUB OUT: ROBERSON,ARIELLE
GOOD! 3PTR by WESEMANN,KINDRED	09:42	47-37	H 10	
	09:10	49-37	H 12	GOOD! LAYUP by MONTGOMERY,LANAY [PNT]
	09:10			ASSIST by MARTIN,TYNICE
MISSED 3PTR by THOMSON,KELLY	08:51			
	08:51			REBOUND (DEF) by MARTIN,TYNICE
	08:25	51-37	H 14	GOOD! JUMPER by MARTIN,TYNICE
	08:25			ASSIST by HOLMES,BRIA
TURNOVER by THOMSON,KELLY	08:08			
	08:07			STEAL by MONTGOMERY,LANAY
	08:03	53-37	H 16	GOOD! LAYUP by MARTIN,TYNICE [FB/PNT]
	08:03			ASSIST by SEGGIE,OLIVIA
TIMEOUT 30SEC	07:49			
SUB IN: GOTH,KAYLA	07:49			
SUB OUT: THOMSON,KELLY	07:49			
TURNOVER by LEWIS,BREANNA	07:41			
	07:30			TIMEOUT 30SEC
	07:15	55-37	H 18	GOOD! JUMPER by MARTIN,TYNICE
	07:15			ASSIST by SEGGIE,OLIVIA
TURNOVER by WESEMANN,KINDRED	07:03			
	06:40	58-37	H 21	GOOD! 3PTR by MULDROW,TEANA
MISSED 3PTR by WESEMANN,KINDRED	06:30			
	06:30			REBOUND (DEF) by HOLMES,BRIA
	06:19	60-37	H 23	GOOD! LAYUP by MULDROW,TEANA [PNT]
	06:19			ASSIST by MONTGOMERY,LANAY
GOOD! LAYUP by LEWIS,BREANNA [PNT]	06:06	60-39	H 21	
ASSIST by DEINES,MEGAN	06:06			
FOUL by MARTIN,SHAELYN	05:49			
SUB IN: TAYLOR,ANTOINETTE	05:49			
SUB OUT: WESEMANN,KINDRED	05:49			
	05:42			MISSED 3PTR by MARTIN,TYNICE
REBOUND (DEF) by TEAM	05:42			
	05:16			FOUL by MULDROW,TEANA
MISSED FT by MARTIN,SHAELYN	05:16			
REBOUND (DEADB) by TEAM	05:16			
MISSED FT by MARTIN,SHAELYN	05:16			
	05:16			REBOUND (DEF) by ROBERSON,ARIELLE
SUB IN: CRAIG,BRI	05:16			
SUB OUT: DEINES,MEGAN	05:16			
	05:16			SUB IN: ROBERSON,ARIELLE
	05:16			SUB IN: MORTON,JESSICA
	05:16			SUB OUT: MULDROW,TEANA
	05:16			SUB OUT: SEGGIE,OLIVIA
	05:04			TURNOVER by MORTON,JESSICA
SUB IN: SHEBLE,JESSICA	05:04			
SUB OUT: LEWIS,BREANNA	05:04			

VISITORS: Kansas State	Time	Score	Margin	HOME: West Virginia
GOOD! JUMPER by TAYLOR,ANTOINETTE [PNT]	04:48	60-41	H 19	
	04:48			FOUL by MORTON,JESSICA
GOOD! FT by TAYLOR,ANTOINETTE	04:48	60-42	H 18	
FOUL by MARTIN,SHAELYN	04:40			
	04:40			MISSED FT by MONTGOMERY,LANAY
	04:40			REBOUND (DEADB) by TEAM
	04:40	61-42	H 19	GOOD! FT by MONTGOMERY,LANAY
SUB IN: HAMMAKER,ANNA	04:40			
SUB OUT: MARTIN,SHAELYN	04:40			
MISSED JUMPER by TAYLOR,ANTOINETTE	04:26			
	04:26			BLOCK by MONTGOMERY,LANAY
	04:24			REBOUND (DEF) by MORTON,JESSICA
FOUL by CRAIG,BRI	04:11			
	04:11			MISSED FT by HOLMES,BRIA
	04:11			REBOUND (DEADB) by TEAM
	04:11	62-42	H 20	GOOD! FT by HOLMES,BRIA
MISSED JUMPER by SHEBLE,JESSICA	03:48			
REBOUND (OFF) by TEAM	03:48			
MISSED LAYUP by CRAIG,BRI	03:41			
	03:41			BLOCK by MONTGOMERY,LANAY
	03:40			REBOUND (DEF) by ROBERSON,ARIELLE
	03:33			MISSED JUMPER by HOLMES,BRIA
	03:33			REBOUND (OFF) by HOLMES,BRIA
	03:12			TURNOVER by HOLMES,BRIA
STEAL by CRAIG,BRI	03:12			
	03:12			FOUL by MORTON,JESSICA
	03:12			SUB IN: SEGGIE,OLIVIA
	03:12			SUB OUT: MORTON,JESSICA
MISSED LAYUP by HAMMAKER,ANNA	02:54			
	02:54			BLOCK by MARTIN,TYNICE
	02:51			REBOUND (DEF) by HOLMES,BRIA
	02:20			TURNOVER by MARTIN,TYNICE
SUB IN: YOUNG,ERICA	02:20			
SUB OUT: GOTH,KAYLA	02:20			
	02:20			SUB IN: MULDROW,TEANA
	02:20			SUB OUT: MONTGOMERY,LANAY
MISSED 3PTR by TAYLOR,ANTOINETTE	02:01			
REBOUND (OFF) by YOUNG,ERICA	02:01			
MISSED JUMPER by YOUNG,ERICA	01:54			
	01:54			REBOUND (DEF) by MARTIN,TYNICE
	01:51			TURNOVER by MULDROW,TEANA
	01:51			SUB IN: PARDEE,KATRINA
	01:51			SUB IN: BREWER,ALEXIS
	01:51			SUB OUT: HOLMES,BRIA
	01:51			SUB OUT: MARTIN,TYNICE
MISSED LAYUP by CRAIG,BRI	01:40			
	01:40			BLOCK by ROBERSON,ARIELLE
	01:38			REBOUND (DEF) by PARDEE,KATRINA
	01:17			SUB IN: MARTIN,ANJA
	01:17			SUB OUT: ROBERSON,ARIELLE
	01:07			TURNOVER by PARDEE,KATRINA
STEAL by HAMMAKER,ANNA	01:05			
GOOD! LAYUP by HAMMAKER,ANNA [FB/PNT]	01:02	62-44	H 18	
	00:55			TIMEOUT 30SEC
	00:55			SUB IN: RHODES,DESIREE
	00:55			SUB OUT: MULDROW,TEANA
	00:40	64-44	H 20	GOOD! LAYUP by RHODES,DESIREE [PNT]
	00:40			ASSIST by PARDEE,KATRINA

VISITORS: Kansas State	Time	Score	Margin	HOME: West Virginia
MISSED 3PTR by CRAIG,BRI	00:16			
REBOUND (OFF) by TEAM	00:16			
TURNOVER by HAMMAKER,ANNA	00:17			

Kansas State 44, West Virginia 64

Period 4-only	In Paint	Off T/O	2nd Chance	Fast Break	Bench	
K-STATE	6	5	0	2	5	Score tied - 0 times
WVU	8	7	0	2	13	Lead changed - 0 times

Kansas State vs West Virginia
2/6/2016; 1:00 p.m. at WVU Coliseum, Morgantown, W.Va.
Scoring/Runs Reference

Period 1		Period 2		
Kansas State	Score	West Virginia	Score	West Virginia
	X	PARDEE 3PTR - 09:50	X	
09:33 - WESEMANN 3PTR	X		TO	RAY TURN - 09:20
	0-2 2	PARDEE LAYUP - 09:14	TO	
08:41 - WESEMANN 3PTR	3 3-2 -1	ROBERSON JUMPER - 08:27	10-18 8 2PF	ROBERSON LAYUP - 09:08
	X		X	
07:59 - LEWIS TURN	TO		TO	MULDROW TURN - 08:34
	3-5 2 3	PARDEE 3PTR - 07:43	X	
07:18 - LEWIS TURN	TO	PARDEE TURN - 07:10	X	HOLMES JUMPER - 07:50
	TO		X	ROBERSON JUMPER - 07:47
06:53 - GOTH JUMPER	X		X	
	3-7 4 2P	HOLMES JUMPER - 06:42	10-20 10 2P	ROBERSON LAYUP - 07:22
06:22 - WESEMANN 3PTR	X	RAY TURN - 06:13	X	
	TO		X	PARDEE JUMPER - 06:55
05:46 - WESEMANN 3PTR	X	MORTON TURN - 05:40	2PF 12-20 8	
	TO		X	PARDEE 3PTR - 06:28
05:26 - PAGE LAYUP	2P 5-7 2	MONTGOMERY LAYUP - 05:10	3 15-20 5	
	5-9 4 2P		TO	SEGGIE TURN - 05:45
04:44 - WESEMANN JUMPER	X		X	
	X	HOLMES JUMPER - 04:37	TO	HOLMES TURN - 05:00
	5-11 6 2P	HOLMES LAYUP - 04:33	3 18-20 2	
04:08 - WESEMANN JUMPER	X		X	MONTGOMERY FT - 04:10
	X		X	MONTGOMERY FT - 04:10
04:02 - LEWIS JUMPER	X		18-23 5 3	HOLMES 3PTR - 04:07
	X	ROBERSON FT - 03:52	03:51 - WESEMANN TURN	TO
	X	ROBERSON FT - 03:52	X	MARTIN 3PTR - 03:31
03:38 - PAGE TURN	TO		X	
	5-13 8 2PF	HOLMES LAYUP - 03:32	X	MARTIN JUMPER - 03:02
	5-14 9 1	HOLMES FT - 03:32	18-26 8 3	ROBERSON 3PTR - 02:39
03:08 - TAYLOR TURN	TO		TO	
	X	MORTON LAYUP - 03:03	X	SEGGIE FT - 02:11
02:53 - DEINES LAYUP	2P 7-14 7	MARTIN JUMPER - 02:42	X	SEGGIE FT - 02:11
	X	TO MONTGOMERY TURN - 02:31	18-28 10 2	HOLMES JUMPER - 01:36
02:07 - TAYLOR TURN	TO	MULDROW LAYUP - 01:55	X	
	7-16 9 2P		2P 20-28 8	
01:30 - TAYLOR 3PTR	X		TO	HOLMES TURN - 00:55
01:27 - MARTIN JUMPER	X	MARTIN 3PTR - 01:17	3 23-28 5	
	X		TO	MONTGOMERY TURN - 00:22
01:08 - GOTH FT	X		X	
01:08 - GOTH FT	1 8-16 8	MONTGOMERY LAYUP - 01:06	TO	
	X	TO MONTGOMERY TURN - 00:53	23-30 7 2P	RAY LAYUP - 00:03
00:41 - CRAIG 3PTR	X			
00:29 - WESEMANN 3PTR	X			
00:25 - LEWIS JUMPER	X			
	TO	RAY TURN - 00:10		
00:07 - GOTH LAYUP	2PF 10-16 6			

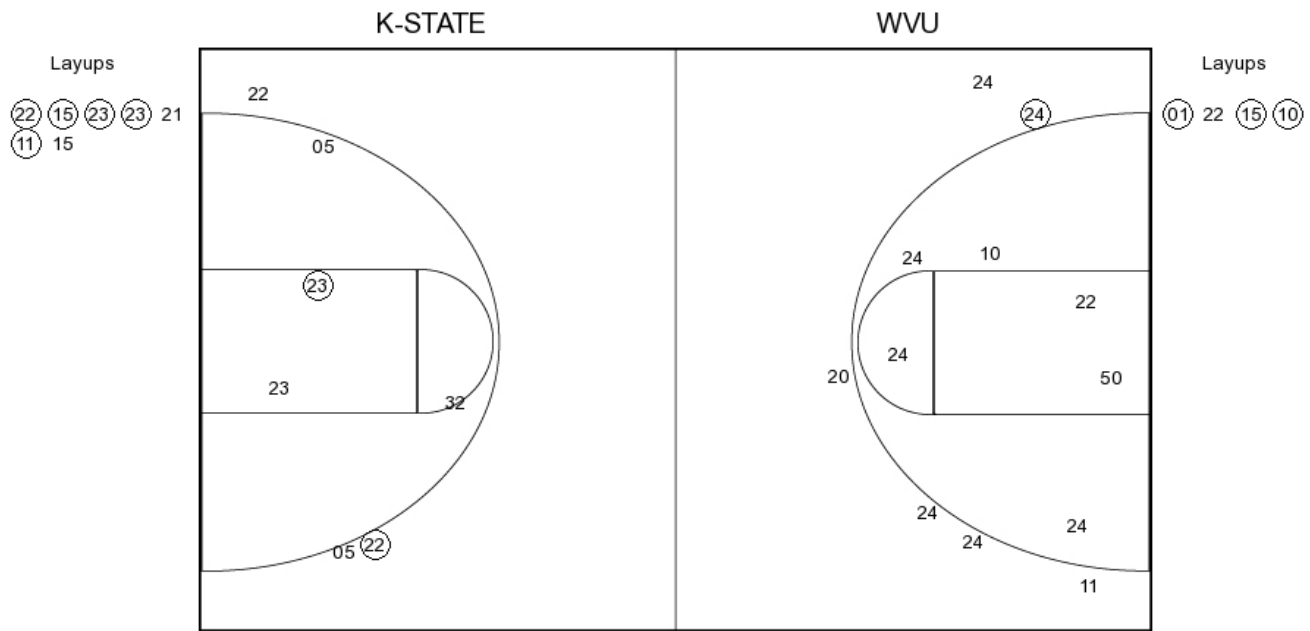
Period 3		Period 4		
Kansas State	Score	West Virginia	Score	West Virginia
09:46 - MARTIN FT	X		09:42 - WESEMANN 3PTR	3 $\frac{37-47}{10}$
09:46 - MARTIN FT	1 $\frac{24-30}{6}$			$\frac{37-49}{12}$ 2 ^P MONTGOMERY LAYUP - 09:10
	X	PARDEE 3PTR - 09:38	08:51 - THOMSON 3PTR	X
	$\frac{24-32}{8}$ 2 ^P	HOLMES LAYUP - 09:31		$\frac{37-51}{14}$ 2
09:25 - PAGE 3PTR	X		08:08 - THOMSON TURN	TO
		TO MONTGOMERY TURN - 09:14		$\frac{37-53}{16}$ 2 ^{PF}
08:55 - MARTIN 3PTR	X		07:41 - LEWIS TURN	TO
	X	HOLMES 3PTR - 08:38		$\frac{37-55}{18}$ 2
		TO ROBERSON TURN - 08:29	07:03 - WESEMANN TURN	TO
08:08 - DEINES 3PTR	X			$\frac{37-58}{21}$ 3
	$\frac{24-33}{9}$ 1	PARDEE FT - 08:00	06:30 - WESEMANN 3PTR	X
	$\frac{24-34}{10}$ 1	PARDEE FT - 08:00		$\frac{37-60}{23}$ 2 ^P
07:43 - DEINES TURN	TO		06:06 - LEWIS LAYUP	2 ^P $\frac{39-60}{21}$
	$\frac{24-36}{12}$ 2 ^P	MONTGOMERY LAYUP - 07:33		X
07:09 - LEWIS LAYUP	2 ^P $\frac{26-36}{10}$		05:16 - MARTIN FT	X
		TO MONTGOMERY TURN - 06:52	05:16 - MARTIN FT	X
06:45 - WESEMANN LAYUP	2 ^P $\frac{28-36}{8}$			TO
		HOLMES TURN - 06:25	04:48 - TAYLOR JUMPER	2 ^P $\frac{41-60}{19}$
05:49 - PAGE 3PTR	X		04:48 - TAYLOR FT	1 $\frac{42-60}{18}$
	X	HOLMES JUMPER - 05:39		X
	$\frac{28-38}{10}$ 2 ^P	HOLMES JUMPER - 05:34		$\frac{42-61}{19}$ 1
05:12 - WESEMANN 3PTR	X		04:26 - TAYLOR JUMPER	X
	X	MULDROW FT - 04:43		X
	$\frac{28-39}{11}$ 1	MULDROW FT - 04:43		$\frac{42-62}{20}$ 1
04:19 - PAGE 3PTR	X		03:48 - SHEBLE JUMPER	X
	$\frac{28-42}{14}$ 3	PARDEE 3PTR - 04:07	03:41 - CRAIG LAYUP	X
03:54 - SHEBLE LAYUP	X			X
		TO ROBERSON TURN - 03:27		TO
03:13 - WESEMANN JUMPER	X		02:54 - HAMMAKER LAYUP	X
	$\frac{28-44}{16}$ 2	MARTIN JUMPER - 02:57		TO
02:37 - LEWIS FT	1 $\frac{29-44}{15}$		02:01 - TAYLOR 3PTR	X
02:37 - LEWIS FT	1 $\frac{30-44}{14}$		01:54 - YOUNG JUMPER	X
	X	MULDROW LAYUP - 02:19		TO
02:17 - LEWIS FT	X		01:40 - CRAIG LAYUP	X
02:17 - LEWIS FT	X			TO
	$\frac{30-45}{15}$ 1	ROBERSON FT - 01:51	01:02 - HAMMAKER LAYUP	2 ^{PF} $\frac{44-62}{18}$
	X	ROBERSON FT - 01:51		$\frac{44-64}{20}$ 2 ^P
01:39 - SHEBLE FT	1 $\frac{31-45}{14}$		00:16 - CRAIG 3PTR	X
01:39 - SHEBLE FT	1 $\frac{32-45}{13}$		00:17 - HAMMAKER TURN	TO
		TO MORTON TURN - 01:30		
01:15 - MARTIN JUMPER	2 ^P $\frac{34-45}{11}$			
	$\frac{34-47}{13}$ 2 ^P	MULDROW LAYUP - 00:51		
00:28 - MARTIN LAYUP	X			
00:05 - WESEMANN 3PTR	X			

Kansas State vs West Virginia

OFFICIAL SHOT CHART

2/6/2016 at WVU Coliseum, Morgantown, W.Va.

PERIOD 1



K-STATE PERIOD 1

FG Made	9
FG Attempted	31
3PFG Made	4
3PFG Attempted	17

WVU PERIOD 1

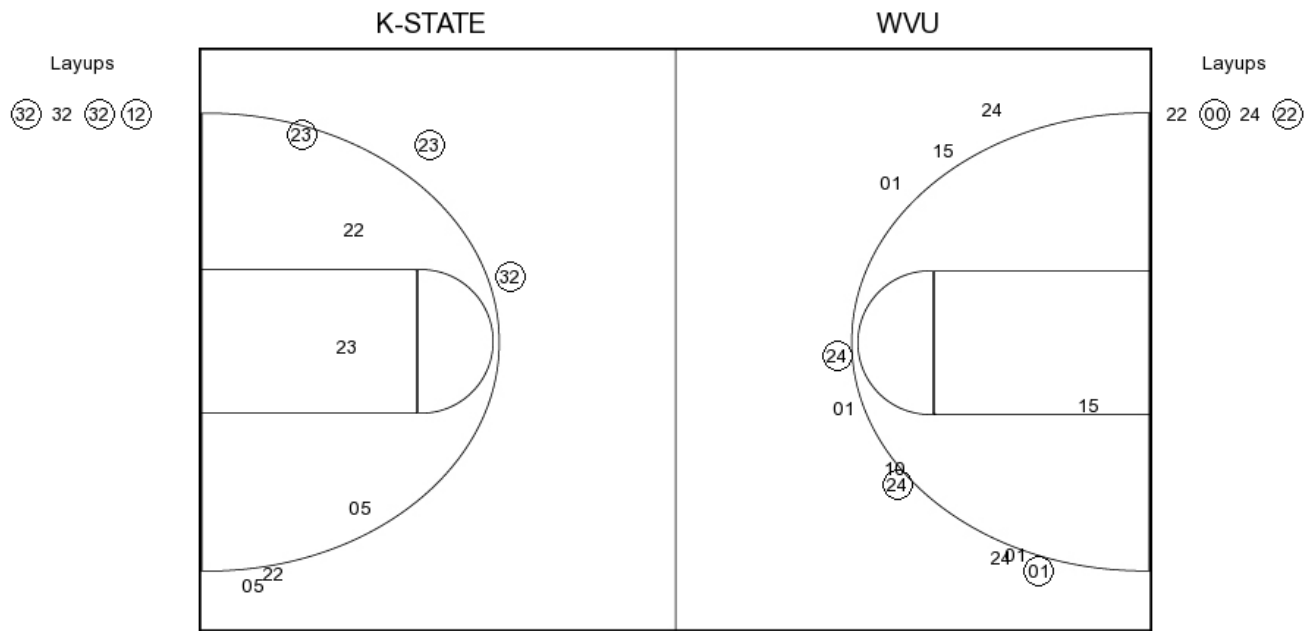
FG Made	13
FG Attempted	26
3PFG Made	3
3PFG Attempted	7

Kansas State vs West Virginia

OFFICIAL SHOT CHART

2/6/2016 at WVU Coliseum, Morgantown, W.Va.

PERIOD 2



K-STATE PERIOD 2

FG Made

FG Attempted

3PFG Made

3PFG Attempted

WVU PERIOD 2

FG Made

FG Attempted

3PFG Made

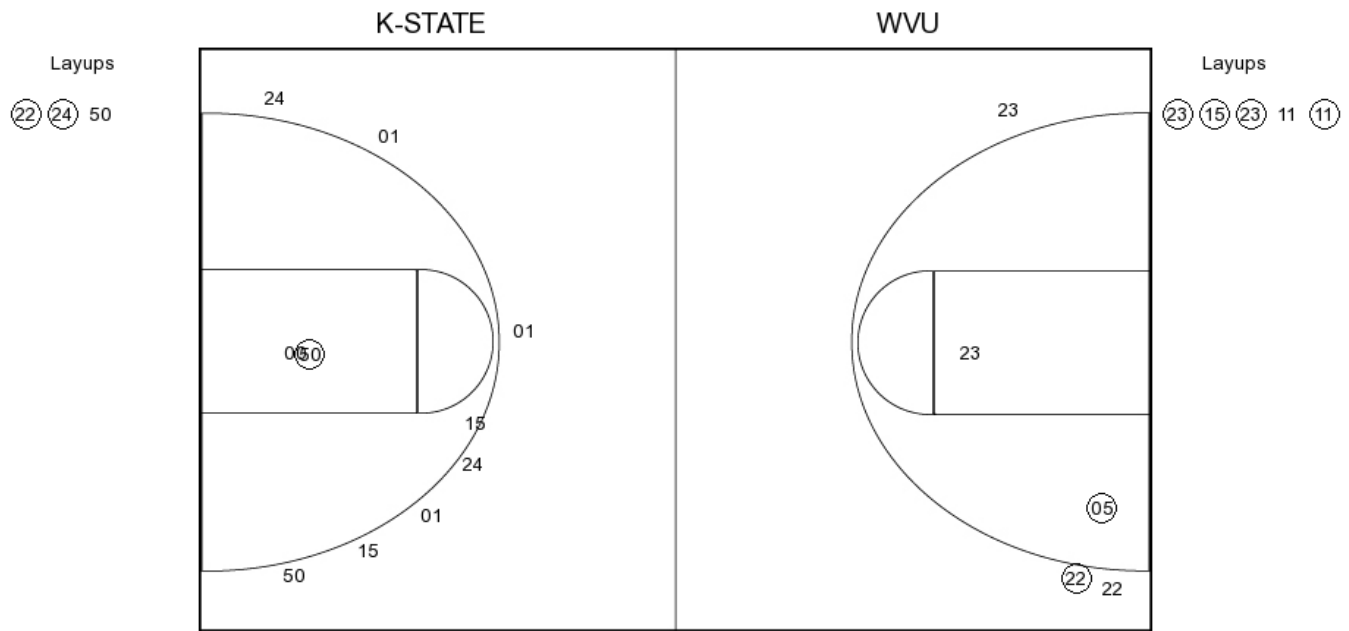
3PFG Attempted

Kansas State vs West Virginia

OFFICIAL SHOT CHART

2/6/2016 at WVU Coliseum, Morgantown, W.Va.

PERIOD 3



K-STATE PERIOD 3

FG Made	7
FG Attempted	27
3PFG Made	1
3PFG Attempted	12

WVU PERIOD 3

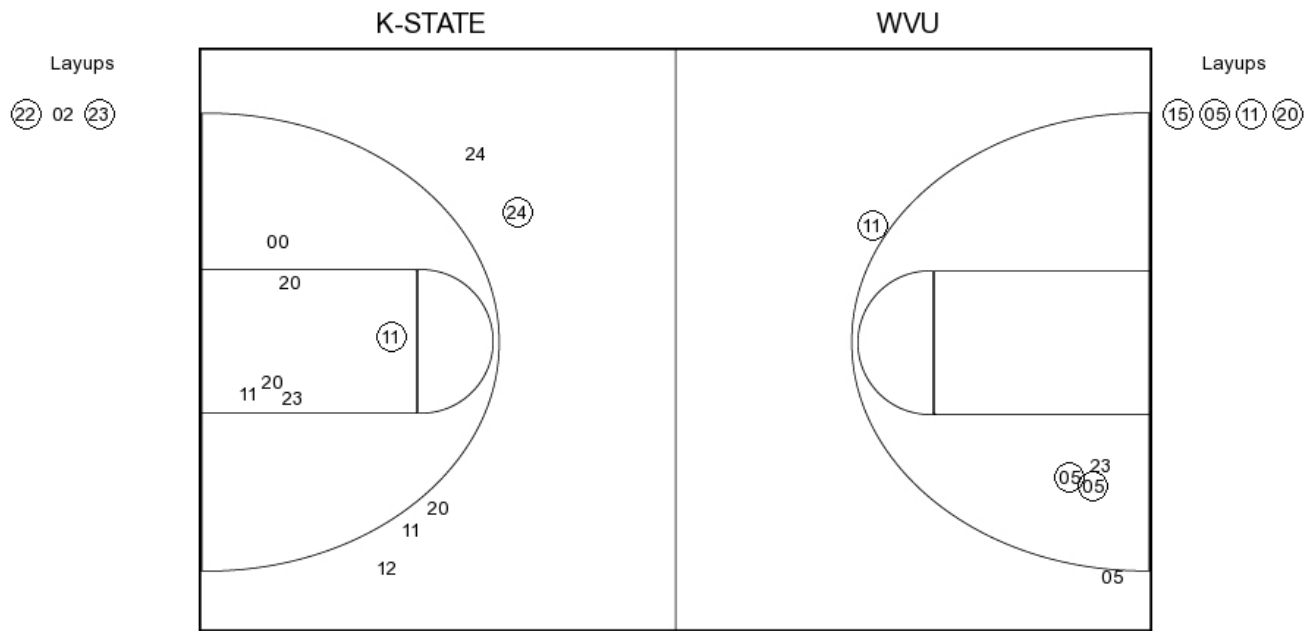
FG Made	13
FG Attempted	19
3PFG Made	2
3PFG Attempted	5

Kansas State vs West Virginia

OFFICIAL SHOT CHART

2/6/2016 at WVU Coliseum, Morgantown, W.Va.

PERIOD 4



K-STATE PERIOD 4

FG Made

FG Attempted

3PFG Made

3PFG Attempted

WVU PERIOD 4

FG Made

FG Attempted

3PFG Made

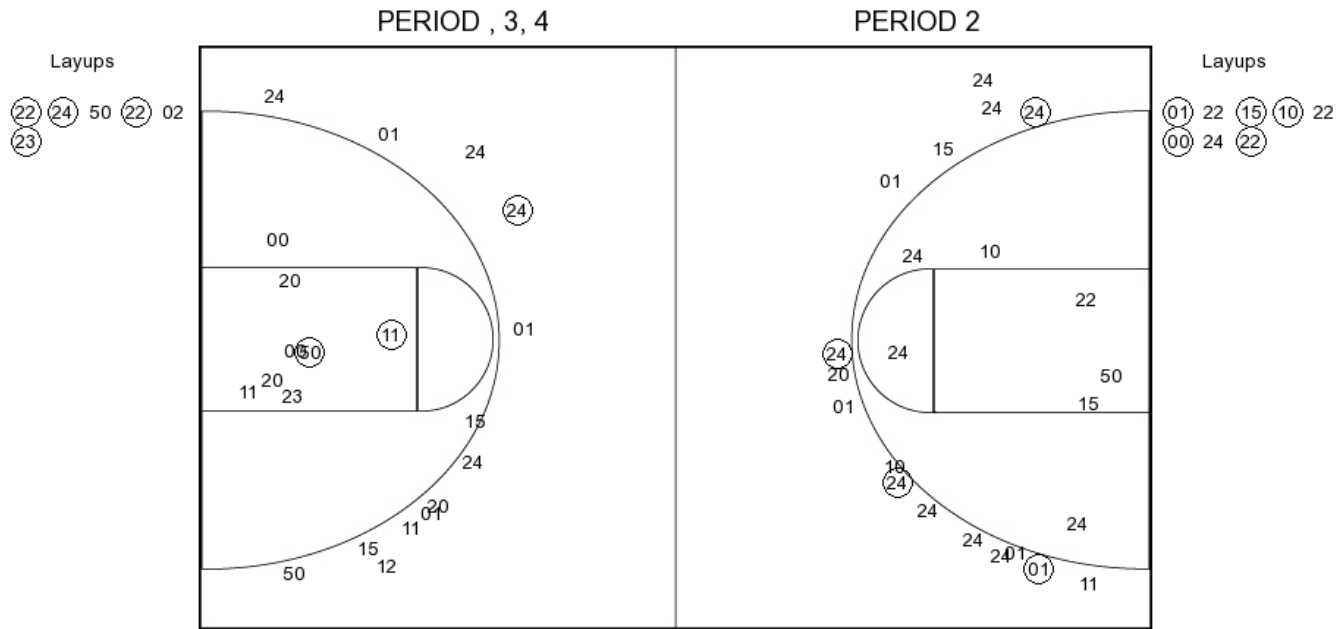
3PFG Attempted

Kansas State vs West Virginia

OFFICIAL SHOT CHART

2/6/2016 at WVU Coliseum, Morgantown, W.Va.

Kansas State



K-STATE PERIOD 1

FG Made	9
FG Attempted	31
3PFG Made	4
3PFG Attempted	17

K-STATE PERIOD 2

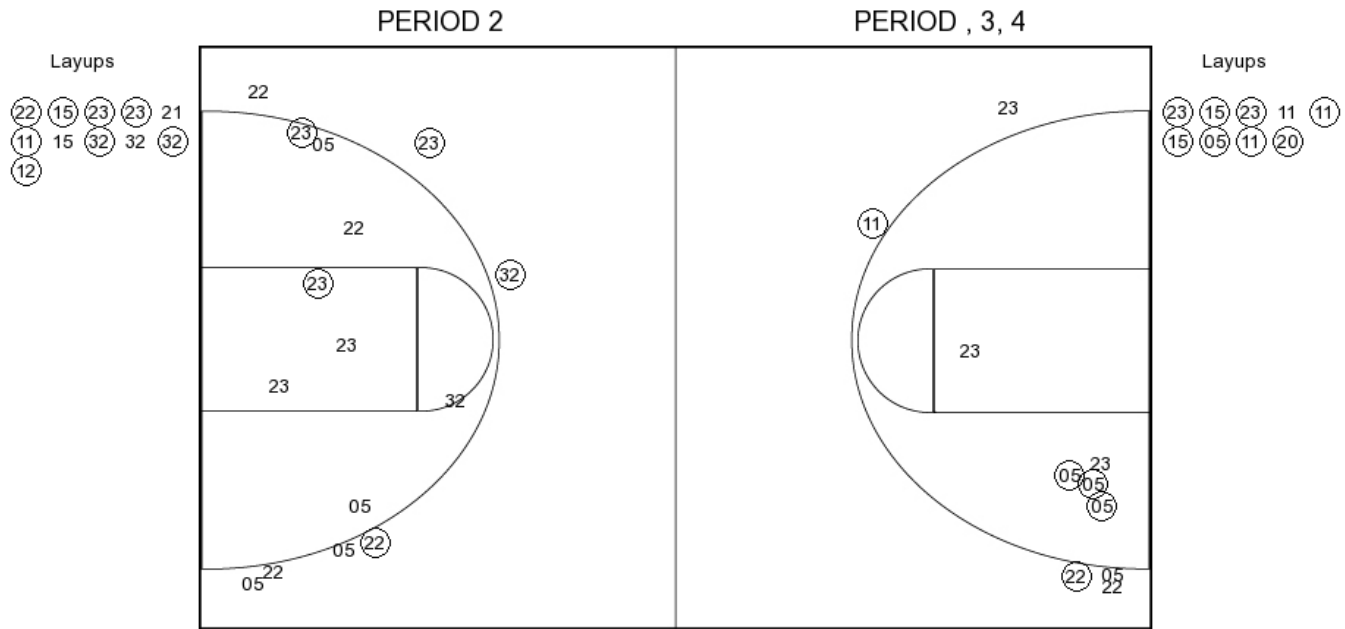
FG Made	
FG Attempted	
3PFG Made	
3PFG Attempted	

Kansas State vs West Virginia

OFFICIAL SHOT CHART

2/6/2016 at WVU Coliseum, Morgantown, W.Va.

West Virginia



WVU PERIOD 1

FG Made	13
FG Attempted	26
3PFG Made	3
3PFG Attempted	7

WVU PERIOD 2

FG Made	
FG Attempted	
3PFG Made	
3PFG Attempted	