



WEST VIRGINIA VS. BAYLOR

1/30/2016

WVU Coliseum, Morgantown, W.Va.

FINAL STATS

Baylor

(21-1, 8-1)

71

West Virginia

(16-6, 5-4)

61

Start Time: 4:00 p.m.

Officials: Tina Napier, Beverly Roberts, Cameron Inouye

Attendance: 4168

Start Time: 4:02 End Time: 5:56

Official Basketball Box Score -- Game Totals -- Final Statistics

Baylor vs West Virginia

1/30/2016 4:00 p.m. at WVU Coliseum, Morgantown, W.Va.

Baylor 71 - 21-1, 8-1

##	Player	S	Total			Rebounds			PF	TP	A	TO	Blk	Stl	Min
			FG-FGA	3PT FG-FGA	FT-FTA	Off Reb	Def Reb	Tot Reb							
02	JOHNSON, NIYA	g	1-6	0-0	0-0	1	4	5	4	2	1	2	0	1	34
04	WALLACE, KRISTY	g	3-9	0-2	2-2	3	5	8	0	8	1	3	1	1	35
13	DAVIS, NINA	f	3-13	0-0	4-9	4	5	9	2	10	1	0	0	0	37
30	JONES, ALEXIS	g	6-21	1-2	7-8	1	4	5	0	20	3	1	0	1	34
32	MOMPRIER, BEATRICE	c	8-15	0-0	0-1	7	8	15	3	16	0	2	1	1	26
01	COHEN, DEKEIYA		0-0	0-0	0-0	0	0	0	0	0	0	0	0	0	3
12	PRINCE, ALEXIS		1-2	0-1	0-0	1	1	2	2	2	0	0	0	0	14
21	BROWN, KALANI		4-5	0-0	3-3	3	1	4	3	11	0	0	0	0	8
55	CAVE, KHADIJIAH		1-2	0-0	0-0	0	2	2	1	2	0	1	1	0	9
TEAM						2	0	2	0		0				
TOTALS			27-73	1-5	16-23	22	30	52	15	71	6	9	3	4	200

Deadball Rebounds: 3.0

FG %	1st Half: 14-39	35.9%	2nd Half: 13-34	38.2%	Game: 27-73	37.0%	4th Qtr	6-17	35.3%
	1st Qtr 5-16	31.3%	2nd Qtr 9-23	39.1%	3rd Qtr 7-17	41.2%			
3FG %	1st Half: 1-2	50.0%	2nd Half: 0-3	00.0%	Game: 1-5	20.0%	4th Qtr	0-1	00.0%
	1st Qtr 1-1	100.0%	2nd Qtr 0-1	00.0%	3rd Qtr 0-2	00.0%			
FT %	1st Half: 6-9	66.7%	2nd Half: 10-14	71.4%	Game: 16-23	69.6%	4th Qtr	5-7	71.4%
	1st Qtr 3-6	50.0%	2nd Qtr 3-3	100.0%	3rd Qtr 5-7	71.4%			

West Virginia 61 - 16-6, 5-4

##	Player	S	Total			Rebounds			PF	TP	A	TO	Blk	Stl	Min
			FG-FGA	3PT FG-FGA	FT-FTA	Off Reb	Def Reb	Tot Reb							
11	MULDROW, TEANA	f	2-3	1-1	0-0	0	4	4	5	5	1	1	1	1	22
12	RAY, CHANIA	g	1-1	0-0	0-0	0	1	1	3	2	0	1	0	0	8
15	MONTGOMERY, LANAY	c	4-12	0-0	1-1	4	6	10	4	9	0	3	4	0	30
22	PARDEE, KATRINA	g	1-3	0-1	0-0	0	0	0	3	2	1	1	0	1	12
23	HOLMES, BRIA	g	2-5	1-3	6-12	1	2	3	1	11	2	2	2	0	39
02	BREWER, ALEXIS		0-2	0-1	4-6	0	0	0	1	4	0	1	1	0	16
03	SEGGIE, OLIVIA		0-0	0-0	0-0	0	1	1	0	0	0	0	0	0	5
05	MARTIN, TYNICE		7-19	2-7	1-1	1	3	4	0	17	2	2	0	1	32
20	RHODES, DESIREE		0-0	0-0	0-0	0	3	3	3	0	0	0	1	0	9
21	MORTON, JESSICA		4-13	0-3	3-4	1	3	4	3	11	2	1	0	0	27
TEAM						3	5	8	0		0				
TOTALS			21-58	4-16	15-24	10	28	38	23	61	8	12	9	3	200

Deadball Rebounds: 6.0

FG %	1st Half: 10-30	33.3%	2nd Half: 11-28	39.3%	Game: 21-58	36.2%	4th Qtr	6-14	42.9%
	1st Qtr 6-14	42.9%	2nd Qtr 4-16	25.0%	3rd Qtr 5-14	35.7%			
3FG %	1st Half: 2-7	28.6%	2nd Half: 2-9	22.2%	Game: 4-16	25.0%	4th Qtr	0-3	00.0%
	1st Qtr 2-3	66.7%	2nd Qtr 0-4	00.0%	3rd Qtr 2-6	33.3%			
FT %	1st Half: 8-13	61.5%	2nd Half: 7-11	63.6%	Game: 15-24	62.5%	4th Qtr	2-4	50.0%
	1st Qtr 3-6	50.0%	2nd Qtr 5-7	71.4%	3rd Qtr 5-7	71.4%			

Officials: Tina Napier, Beverly Roberts, Cameron Inouye

Technical Fouls: Baylor- None. West Virginia- None.

Attendance: 4168

Start Time: 4:02 End Time: 5:56

Score by periods	1st	2nd	3rd	4th	Total
Baylor	14	21	19	17	71
West Virginia	17	13	17	14	61

Points	In Paint	Off T/O	2nd 2nd Chance	Fast Break	Bench
BU	44	11	21	4	15
WVU	22	6	21	4	32

Last FG - BU 4th-01:06, WVU 4th-00:40.

Largest lead - Baylor by 10 4th-01:06; West Virginia by 8 1st-00:43

BU led for 25:50. WVU led for 10:18. Game was tied for 3:52.

Score tied - 5 times
Lead changed - 5 times

Official Basketball Box Score -- Game Totals -- First Half Statistics

Baylor vs West Virginia

1/30/2016 4:00 p.m. at WVU Coliseum, Morgantown, W.Va.

Baylor 35 • 21-1, 8-1

##	Player	S	Total			Rebounds			PF	TP	A	TO	Blk	Stl	Min
			FG-FGA	3PT FG-FGA	FT-FTA	Off Reb	Def Reb	Tot Reb							
02	JOHNSON, NIYA	g	1-5	0-0	0-0	1	1	2	3	2	0	2	0	0	17
04	WALLACE, KRISTY	g	1-3	0-1	0-0	3	4	7	0	2	1	2	1	0	16
13	DAVIS, NINA	f	1-5	0-0	0-2	3	3	6	0	2	1	0	0	0	17
30	JONES, ALEXIS	g	5-14	1-1	4-5	0	3	3	0	15	1	1	0	1	18
32	MOMPRIER, BEATRICE	c	3-8	0-0	0-0	2	1	3	0	6	0	0	1	0	8
01	COHEN, DEKEIYA		0-0	0-0	0-0	0	0	0	0	0	0	0	0	0	3
12	PRINCE, ALEXIS		0-0	0-0	0-0	0	1	1	2	0	0	0	0	0	6
21	BROWN, KALANI		2-2	0-0	2-2	1	1	2	2	6	0	0	0	0	6
55	CAVE, KHADIJAH		1-2	0-0	0-0	0	2	2	1	2	0	0	1	0	9
TEAM						1	0	1	0						
Totals			14-39	1-2	6-9	11	16	27	8	35	3	5	3	1	100

FG %	1st Qtr	5-16	31.3%	2nd Qtr	9-23	39.1%	Half:	14-39	35.9%
3FG %	1st Qtr	1-1	100.0%	2nd Qtr	0-1	00.0%	Half:	1-2	50.0%
FT %	1st Qtr	3-6	50.0%	2nd Qtr	3-3	100.0%	Half:	6-9	66.7%

West Virginia 30 • 16-6, 5-4

##	Player	S	Total			Rebounds			PF	TP	A	TO	Blk	Stl	Min
			FG-FGA	3PT FG-FGA	FT-FTA	Off Reb	Def Reb	Tot Reb							
11	MULDROW, TEANA	f	0-1	0-0	0-0	0	3	3	2	0	0	0	0	0	6
12	RAY, CHANIA	g	1-1	0-0	0-0	0	0	0	3	2	0	1	0	0	3
15	MONTGOMERY, LANAY	c	3-8	0-0	0-0	2	2	4	2	6	0	2	2	0	15
22	PARDEE, KATRINA	g	1-2	0-1	0-0	0	0	0	2	2	1	1	0	1	9
23	HOLMES, BRIA	g	2-4	1-2	4-8	1	2	3	1	9	0	2	2	0	20
02	BREWER, ALEXIS		0-1	0-0	3-4	0	0	0	0	3	0	0	0	0	10
03	SEGGIE, OLIVIA		0-0	0-0	0-0	0	0	0	0	0	0	0	0	0	1
05	MARTIN, TYNICE		3-9	1-3	1-1	1	3	4	0	8	1	2	0	1	15
20	RHODES, DESIREE		0-0	0-0	0-0	0	1	1	1	0	0	0	0	0	5
21	MORTON, JESSICA		0-4	0-1	0-0	1	2	3	1	0	2	1	0	0	16
TEAM						2	2	4	0						
Totals			10-30	2-7	8-13	7	15	22	12	30	4	9	4	2	100

FG %	1st Qtr	6-14	42.9%	2nd Qtr	4-16	25.0%	Half:	10-30	33.3%
3FG %	1st Qtr	2-3	66.7%	2nd Qtr	0-4	00.0%	Half:	2-7	28.6%
FT %	1st Qtr	3-6	50.0%	2nd Qtr	5-7	71.4%	Half:	8-13	61.5%

Officials: Tina Napier, Beverly Roberts, Cameron Inouye

Technical Fouls: Baylor- None. West Virginia- None.

Start Time: 4:02 End Time: 5:56

Score by periods	1st	2nd	3rd	4th	Total
Baylor	14	21	19	17	71
West Virginia	17	13	17	14	61

Points	In Paint	Off T/O	2nd Chance	Fast Break	Bench
BU	22	11	8	2	8
	14	3	2	2	11

Last FG - BU 2nd-00:29, WVU 2nd-03:24.

BU led for 5:50. WVU led for 10:18. Game was tied for 3:52.

Score tied - 5 times
Lead changed - 5 times

Baylor vs West Virginia
1/30/2016; 4:00 p.m. at WVU Coliseum, Morgantown, W.Va.
Period 1 Play-By-Play

VISITORS: Baylor	Time	Score	Margin	HOME: West Virginia
	09:58	2-0	H 2	GOOD! LAYUP by RAY,CHANIA [PNT]
TURNOVER by WALLACE,KRISTY	09:44			
	09:33			MISSED LAYUP by MONTGOMERY,LANAY
	09:33			REBOUND (OFF) by MONTGOMERY,LANAY
	09:31			TURNOVER by MONTGOMERY,LANAY
MISSED JUMPER by JONES,ALEXIS	09:22			
REBOUND (OFF) by WALLACE,KRISTY	09:22			
GOOD! LAYUP by MOMPREMIER,BEATRICE [PNT]	09:09	2-2	T	
	08:51			TURNOVER by MONTGOMERY,LANAY
MISSED LAYUP by MOMPREMIER,BEATRICE	08:41			
	08:41			REBOUND (DEF) by MONTGOMERY,LANAY
	08:32			TURNOVER by RAY,CHANIA
	08:32			FOUL by RAY,CHANIA
	08:23			FOUL by RAY,CHANIA
	08:23			SUB IN: MORTON,JESSICA
	08:23			SUB OUT: RAY,CHANIA
MISSED JUMPER by JONES,ALEXIS	08:20			
	08:20			BLOCK by HOLMES,BRIA
	08:16			REBOUND (DEF) by MULDROW,TEANA
	08:11	4-2	H 2	GOOD! LAYUP by HOLMES,BRIA [FB/PNT]
GOOD! JUMPER by MOMPREMIER,BEATRICE [PNT]	07:54	4-4	T	
	07:37			MISSED JUMPER by MULDROW,TEANA
REBOUND (DEF) by MOMPREMIER,BEATRICE	07:37			
TURNOVER by WALLACE,KRISTY	07:24			
SUB IN: PRINCE,ALEXIS	07:24			
SUB OUT: WALLACE,KRISTY	07:24			
	06:52			MISSED JUMPER by MONTGOMERY,LANAY
REBOUND (DEF) by DAVIS,NINA	06:52			
	06:33			FOUL by MULDROW,TEANA
MISSED FT by JONES,ALEXIS	06:33			
REBOUND (DEADB) by TEAM	06:33			
GOOD! FT by JONES,ALEXIS	06:33	4-5	V 1	
	06:33			SUB IN: MARTIN,TYNICE
	06:33			SUB OUT: PARDEE,KATRINA
	06:29			TURNOVER by MORTON,JESSICA
MISSED LAYUP by JOHNSON,NIYA	06:04			
	06:04			REBOUND (DEF) by MULDROW,TEANA
	05:46			MISSED JUMPER by MARTIN,TYNICE
	05:46			REBOUND (OFF) by MONTGOMERY,LANAY
	05:41	6-5	H 1	GOOD! JUMPER by MONTGOMERY,LANAY [PNT]
MISSED JUMPER by DAVIS,NINA	05:29			
REBOUND (OFF) by JOHNSON,NIYA	05:29			
MISSED JUMPER by MOMPREMIER,BEATRICE	05:22			
	05:22			REBOUND (DEF) by MULDROW,TEANA
	05:14	9-5	H 4	GOOD! 3PTR by MARTIN,TYNICE
	05:14			ASSIST by MORTON,JESSICA
TIMEOUT 30SEC	05:12			
SUB IN: CAVE,KHADIJIAH	05:12			
SUB OUT: MOMPREMIER,BEATRICE	05:12			
TURNOVER by JOHNSON,NIYA	04:55			
	04:40			MISSED LAYUP by MONTGOMERY,LANAY
REBOUND (DEF) by PRINCE,ALEXIS	04:40			
MISSED JUMPER by DAVIS,NINA	04:31			

VISITORS: Baylor	Time	Score	Margin	HOME: West Virginia
REBOUND (OFF) by DAVIS,NINA	04:31			
	04:30			FOUL by MULDROW,TEANA
MISSED FT by DAVIS,NINA	04:30			
REBOUND (DEADB) by TEAM	04:30			
MISSED FT by DAVIS,NINA	04:30			
	04:30			REBOUND (DEF) by HOLMES,BRIA
	04:30			SUB IN: BREWER,ALEXIS
	04:30			SUB OUT: MULDROW,TEANA
	04:11			MISSED JUMPER by MONTGOMERY,LANAY
REBOUND (DEF) by JONES,ALEXIS	04:11			
TURNOVER by JONES,ALEXIS	04:04			
	04:01			STEAL by MARTIN,TYNICE
FOUL by CAVE,KHADIJIAH	03:47			
SUB IN: BROWN,KALANI	03:47			
SUB OUT: DAVIS,NINA	03:47			
	03:47			SUB IN: RHODES,DESIREE
	03:47			SUB OUT: MONTGOMERY,LANAY
FOUL by PRINCE,ALEXIS	03:40			
	03:40	10-5	H 5	GOOD! FT by BREWER,ALEXIS
	03:40	11-5	H 6	GOOD! FT by BREWER,ALEXIS
SUB IN: WALLACE,KRISTY	03:40			
SUB OUT: PRINCE,ALEXIS	03:40			
GOOD! JUMPER by JONES,ALEXIS [PNT]	03:31	11-7	H 4	
	03:12			MISSED JUMPER by MORTON,JESSICA
REBOUND (DEF) by BROWN,KALANI	03:12			
MISSED LAYUP by JOHNSON,NIYA	03:04			
	03:04			REBOUND (DEF) by RHODES,DESIREE
	02:49	13-7	H 6	GOOD! LAYUP by MARTIN,TYNICE [PNT]
MISSED JUMPER by JONES,ALEXIS	02:27			
	02:27			REBOUND (DEF) by HOLMES,BRIA
	02:20			TURNOVER by HOLMES,BRIA
STEAL by JONES,ALEXIS	02:18			
MISSED JUMPER by JONES,ALEXIS	02:09			
	02:09			REBOUND (DEF) by TEAM
FOUL by BROWN,KALANI	01:40			
	01:40			MISSED FT by HOLMES,BRIA
	01:40			REBOUND (DEADB) by TEAM
	01:40			MISSED FT by HOLMES,BRIA
REBOUND (DEF) by CAVE,KHADIJIAH	01:40			
GOOD! LAYUP by BROWN,KALANI [FB/PNT]	01:36	13-9	H 4	
ASSIST by JONES,ALEXIS	01:36			
	01:23	16-9	H 7	GOOD! 3PTR by HOLMES,BRIA
	01:23			ASSIST by MORTON,JESSICA
MISSED JUMPER by JONES,ALEXIS	00:50			
	00:50			REBOUND (DEF) by MARTIN,TYNICE
FOUL by JOHNSON,NIYA	00:43			
	00:43			MISSED FT by BREWER,ALEXIS
	00:43			REBOUND (DEADB) by TEAM
	00:43	17-9	H 8	GOOD! FT by BREWER,ALEXIS
SUB IN: DAVIS,NINA	00:43			
SUB OUT: CAVE,KHADIJIAH	00:43			
	00:30			FOUL by RHODES,DESIREE
GOOD! FT by BROWN,KALANI	00:30	17-10	H 7	
GOOD! FT by BROWN,KALANI	00:30	17-11	H 6	
	00:30			MISSED 3PTR by HOLMES,BRIA
REBOUND (DEF) by WALLACE,KRISTY	00:30			
GOOD! 3PTR by JONES,ALEXIS	00:03	17-14	H 3	

Baylor 14, West Virginia 17

Period 1-only	In Paint	Off T/O	2nd Chance	Fast Break	Bench	
BU	8	2	2	2	4	Score tied - 4 times
WVU	8	2	2	2	8	Lead changed - 2 times

Baylor vs West Virginia
1/30/2016; 4:00 p.m. at WVU Coliseum, Morgantown, W.Va.
Period 2 Play-By-Play

VISITORS: Baylor	Time	Score	Margin	HOME: West Virginia
SUB IN: BROWN,KALANI	10:00			
SUB OUT: MOMPREMIER,BEATRICE	10:00			
	10:00			SUB IN: MARTIN,TYNICE
	10:00			SUB IN: BREWER,ALEXIS
	10:00			SUB IN: MORTON,JESSICA
	10:00			SUB OUT: MULDROW,TEANA
	10:00			SUB OUT: RAY,CHANIA
	10:00			SUB OUT: PARDEE,KATRINA
	09:46			MISSED LAYUP by HOLMES,BRIA
REBOUND (DEF) by JOHNSON,NIYA	09:46			
MISSED LAYUP by JOHNSON,NIYA	09:40			
	09:40			REBOUND (DEF) by MONTGOMERY,LANAY
	09:34			TURNOVER by MARTIN,TYNICE
GOOD! JUMPER by DAVIS,NINA [PNT]	09:21	17-16	H 1	
	09:02			MISSED LAYUP by BREWER,ALEXIS
BLOCK by WALLACE,KRISTY	09:02			
	09:02			REBOUND (OFF) by TEAM
	09:01			MISSED 3PTR by MARTIN,TYNICE
REBOUND (DEF) by WALLACE,KRISTY	09:01			
	08:46			FOUL by MORTON,JESSICA
MISSED JUMPER by JONES,ALEXIS	08:44			
REBOUND (OFF) by WALLACE,KRISTY	08:44			
MISSED JUMPER by DAVIS,NINA	08:28			
	08:28			REBOUND (DEF) by TEAM
	08:26			SUB IN: SEGGIE,OLIVIA
	08:26			SUB OUT: MORTON,JESSICA
	08:10			MISSED JUMPER by MARTIN,TYNICE
REBOUND (DEF) by DAVIS,NINA	08:10			
MISSED JUMPER by JONES,ALEXIS	07:59			
REBOUND (OFF) by BROWN,KALANI	07:59			
GOOD! LAYUP by BROWN,KALANI [PNT]	07:51	17-18	V 1	
FOUL by BROWN,KALANI	07:50			
	07:50	18-18	T	GOOD! FT by HOLMES,BRIA
	07:50			MISSED FT by HOLMES,BRIA
REBOUND (DEF) by CAVE,KHADIJIAH	07:50			
SUB IN: CAVE,KHADIJIAH	07:50			
SUB OUT: BROWN,KALANI	07:50			
	07:50			SUB IN: PARDEE,KATRINA
	07:50			SUB OUT: BREWER,ALEXIS
MISSED LAYUP by JONES,ALEXIS	07:45			
	07:45			BLOCK by MONTGOMERY,LANAY
	07:44			REBOUND (DEF) by MARTIN,TYNICE
	07:38			TURNOVER by HOLMES,BRIA
	07:38			FOUL by HOLMES,BRIA
SUB IN: PRINCE,ALEXIS	07:38			
SUB OUT: JONES,ALEXIS	07:38			
GOOD! LAYUP by JOHNSON,NIYA [PNT]	07:27	18-20	V 2	
ASSIST by WALLACE,KRISTY	07:27			
	07:09			TURNOVER by MARTIN,TYNICE
	07:09			SUB IN: BREWER,ALEXIS
	07:09			SUB IN: MORTON,JESSICA
	07:09			SUB OUT: MARTIN,TYNICE
	07:09			SUB OUT: SEGGIE,OLIVIA

VISITORS: Baylor	Time	Score	Margin	HOME: West Virginia
GOOD! JUMPER by WALLACE,KRISTY [PNT]	06:57	18-22	V 4	
	06:43			MISSED JUMPER by MORTON,JESSICA
BLOCK by CAVE,KHADIJIAH	06:43			
	06:41			REBOUND (OFF) by TEAM
	06:35			MISSED 3PTR by MORTON,JESSICA
REBOUND (DEF) by DAVIS,NINA	06:35			
	06:35			FOUL by MONTGOMERY,LANAY
	06:35			SUB IN: RAY,CHANIA
	06:35			SUB OUT: MORTON,JESSICA
MISSED LAYUP by WALLACE,KRISTY	06:18			
REBOUND (OFF) by DAVIS,NINA	06:18			
GOOD! LAYUP by CAVE,KHADIJIAH [PNT]	06:12	18-24	V 6	
ASSIST by DAVIS,NINA	06:12			
	06:11			TIMEOUT 30SEC
	05:45	20-24	V 4	GOOD! JUMPER by PARDEE,KATRINA [PNT]
MISSED LAYUP by JOHNSON,NIYA	05:23			
REBOUND (OFF) by DAVIS,NINA	05:23			
	05:22			FOUL by RAY,CHANIA
TURNOVER by JOHNSON,NIYA	05:22			
	05:22			SUB IN: MORTON,JESSICA
	05:22			SUB IN: MARTIN,TYNICE
	05:22			SUB OUT: BREWER,ALEXIS
	05:22			SUB OUT: RAY,CHANIA
	05:20			STEAL by PARDEE,KATRINA
FOUL by PRINCE,ALEXIS	05:17			
	05:17	21-24	V 3	GOOD! FT by HOLMES,BRIA
	05:17			MISSED FT by HOLMES,BRIA
REBOUND (DEF) by WALLACE,KRISTY	05:17			
SUB IN: JONES,ALEXIS	05:17			
SUB OUT: PRINCE,ALEXIS	05:17			
	04:56			FOUL by PARDEE,KATRINA
GOOD! FT by JONES,ALEXIS	04:56	21-25	V 4	
GOOD! FT by JONES,ALEXIS	04:56	21-26	V 5	
	04:39	23-26	V 3	GOOD! JUMPER by MARTIN,TYNICE
FOUL by JOHNSON,NIYA	04:39			
	04:39	24-26	V 2	GOOD! FT by MARTIN,TYNICE
MISSED 3PTR by WALLACE,KRISTY	04:16			
	04:16			REBOUND (DEF) by MORTON,JESSICA
	03:58	26-26	T	GOOD! LAYUP by MONTGOMERY,LANAY [PNT]
	03:58			ASSIST by MARTIN,TYNICE
MISSED JUMPER by CAVE,KHADIJIAH	03:41			
	03:41			REBOUND (DEF) by MARTIN,TYNICE
	03:24	28-26	H 2	GOOD! LAYUP by MONTGOMERY,LANAY [PNT]
	03:24			ASSIST by PARDEE,KATRINA
MISSED JUMPER by DAVIS,NINA	03:05			
	03:05			BLOCK by MONTGOMERY,LANAY
	03:03			REBOUND (DEF) by MORTON,JESSICA
FOUL by JOHNSON,NIYA	03:00			
	03:00	29-26	H 3	GOOD! FT by HOLMES,BRIA
	03:00	30-26	H 4	GOOD! FT by HOLMES,BRIA
SUB IN: MOMPRESIER,BEATRICE	03:00			
SUB IN: COHEN,DEKEIYA	03:00			
SUB OUT: JOHNSON,NIYA	03:00			
SUB OUT: CAVE,KHADIJIAH	03:00			
	03:00			SUB IN: RHODES,DESIREE
	03:00			SUB OUT: MONTGOMERY,LANAY
GOOD! JUMPER by JONES,ALEXIS	02:43	30-28	H 2	
	02:29			MISSED 3PTR by PARDEE,KATRINA

VISITORS: Baylor	Time	Score	Margin	HOME: West Virginia
REBOUND (DEF) by JONES,ALEXIS	02:29			
MISSED JUMPER by JONES,ALEXIS	02:22			
REBOUND (OFF) by WALLACE,KRISTY	02:22			
MISSED LAYUP by MOMPREMIER,BEATRICE	02:09			
	02:09			BLOCK by HOLMES,BRIA
REBOUND (OFF) by TEAM	02:09			
MISSED LAYUP by MOMPREMIER,BEATRICE	02:08			
REBOUND (OFF) by MOMPREMIER,BEATRICE	02:08			
MISSED LAYUP by MOMPREMIER,BEATRICE	02:04			
REBOUND (OFF) by MOMPREMIER,BEATRICE	02:04			
GOOD! LAYUP by MOMPREMIER,BEATRICE [PNT]	02:02	30-30	T	
	01:40			TURNOVER by PARDEE,KATRINA
	01:40			FOUL by PARDEE,KATRINA
	01:40			SUB IN: MONTGOMERY,LANAY
	01:40			SUB OUT: RHODES,DESIREE
GOOD! LAYUP by JONES,ALEXIS [PNT]	01:28	30-32	V 2	
	01:28			FOUL by MONTGOMERY,LANAY
GOOD! FT by JONES,ALEXIS	01:28	30-33	V 3	
	01:28			SUB IN: BREWER,ALEXIS
	01:28			SUB OUT: PARDEE,KATRINA
	01:12			MISSED 3PTR by MARTIN,TYNICE
	01:12			REBOUND (OFF) by HOLMES,BRIA
	00:48			MISSED JUMPER by MARTIN,TYNICE
REBOUND (DEF) by WALLACE,KRISTY	00:48			
GOOD! JUMPER by JONES,ALEXIS	00:29	30-35	V 5	
	00:05			MISSED JUMPER by MORTON,JESSICA
BLOCK by MOMPREMIER,BEATRICE	00:05			
	00:03			REBOUND (OFF) by MORTON,JESSICA
	00:01			MISSED LAYUP by MONTGOMERY,LANAY
	00:01			REBOUND (OFF) by MARTIN,TYNICE
	00:00			MISSED JUMPER by MARTIN,TYNICE
REBOUND (DEF) by JONES,ALEXIS	00:00			

Baylor 35, West Virginia 30

Period 2-only	In Paint	Off T/O	2nd Chance	Fast Break	Bench	
BU	14	9	6	0	4	Score tied - 2 times
WVU	6	1	0	0	3	Lead changed - 4 times

Official Basketball Box Score -- Game Totals -- Second Half Statistics

Baylor vs West Virginia

1/30/2016 4:00 p.m. at WVU Coliseum, Morgantown, W.Va.

Baylor 36 • 21-1, 8-1

##	Player	S	Total		3-Ptr		FT-FTA	Rebounds			PF	TP	A	TO	Blk	Stl	Min
			FG-FGA	3PT FG-FGA	Off Reb	Def Reb		Tot Reb									
02	JOHNSON, NIYA	g	0-1	0-0	0-0	0	3	3	1	0	1	0	0	0	1	17	
04	WALLACE, KRISTY	g	2-6	0-1	2-2	0	1	1	0	6	0	1	0	1	19		
13	DAVIS, NINA	f	2-8	0-0	4-7	1	2	3	2	8	0	0	0	0	20		
30	JONES, ALEXIS	g	1-7	0-1	3-3	1	1	2	0	5	2	0	0	0	16		
32	MOMPRIER, BEATRICE	c	5-7	0-0	0-1	5	7	12	3	10	0	2	0	1	18		
01	COHEN, DEKEIYA		0-0	0-0	0-0	0	0	0	0	0	0	0	0	0	0		
12	PRINCE, ALEXIS		1-2	0-1	0-0	1	0	1	0	2	0	0	0	0	8		
21	BROWN, KALANI		2-3	0-0	1-1	2	0	2	1	5	0	0	0	0	2		
55	CAVE, KHADIJAH		0-0	0-0	0-0	0	0	0	0	0	0	1	0	0	0		
TEAM						1	0	1	0								
Totals			13-34	0-3	10-14	11	14	25	7	36	3	4	0	3	100		

FG %	3rd Qtr	7-17	41.2%	4th Qtr	6-17	35.3%	Half:	13-34	38.2%
3FG %	3rd Qtr	0-2	00.0%	4th Qtr	0-1	00.0%	Half:	0-3	50.0%
FT %	3rd Qtr	5-7	71.4%	4th Qtr	5-7	71.4%	Half:	10-14	71.4%

West Virginia 31 • 16-6, 5-4

##	Player	S	Total		3-Ptr		FT-FTA	Rebounds			PF	TP	A	TO	Blk	Stl	Min
			FG-FGA	3PT FG-FGA	Off Reb	Def Reb		Tot Reb									
11	MULDROW, TEANA	f	2-2	1-1	0-0	0	1	1	3	5	1	1	1	1	16		
12	RAY, CHANIA	g	0-0	0-0	0-0	0	1	1	0	0	0	0	0	5			
15	MONTGOMERY, LANAY	c	1-4	0-0	1-1	2	4	6	2	3	0	1	2	15			
22	PARDEE, KATRINA	g	0-1	0-0	0-0	0	0	0	1	0	0	0	0	3			
23	HOLMES, BRIA	g	0-1	0-1	2-4	0	0	0	0	2	2	0	0	19			
02	BREWER, ALEXIS		0-1	0-1	1-2	0	0	0	1	1	0	1	1	6			
03	SEGGIE, OLIVIA		0-0	0-0	0-0	0	1	1	0	0	0	0	0	4			
05	MARTIN, TYNICE		4-10	1-4	0-0	0	0	0	0	9	1	0	0	17			
20	RHODES, DESIREE		0-0	0-0	0-0	0	2	2	2	0	0	0	1	4			
21	MORTON, JESSICA		4-9	0-2	3-4	0	1	1	2	11	0	0	0	11			
TEAM						1	3	4	0								
Totals			11-28	2-9	7-11	3	13	16	11	31	4	3	5	1	100		

FG %	3rd Qtr	5-14	35.7%	4th Qtr	6-14	42.9%	Half:	11-28	39.3%
3FG %	3rd Qtr	2-6	33.3%	4th Qtr	0-3	00.0%	Half:	2-9	28.6%
FT %	3rd Qtr	5-7	71.4%	4th Qtr	2-4	50.0%	Half:	7-11	63.6%

Officials: Tina Napier, Beverly Roberts, Cameron Inouye

Technical Fouls: Baylor- None. West Virginia- None.

Start Time: 4:02 End Time: 5:56

Score by periods	1st	2nd	3rd	4th	Total
Baylor	14	21	19	17	71
West Virginia	17	13	17	14	61

Points	In Paint	Off T/O	2nd 2nd Chance	Fast Fast Break	Bench
BU	22	0	13	2	7
	8	3	2	2	21

Last FG - BU 4th-01:06, WVU 4th-00:40.

BU led for 20:00. WVU led for 0:00. Game was tied for 0:00.

Score tied - 0 times
Lead changed - 0 times

Baylor vs West Virginia
1/30/2016; 4:00 p.m. at WVU Coliseum, Morgantown, W.Va.
Period 3 Play-By-Play

VISITORS: Baylor	Time	Score	Margin	HOME: West Virginia
	10:00			SUB IN: MORTON,JESSICA
	10:00			SUB OUT: RAY,CHANIA
	09:44			MISSED JUMPER by PARDEE,KATRINA
REBOUND (DEF) by MOMPRESIER,BEATRICE	09:44			
MISSED LAYUP by DAVIS,NINA	09:33			
	09:33			BLOCK by MULDROW,TEANA
	09:31			REBOUND (DEF) by MONTGOMERY,LANAY
	09:22			MISSED 3PTR by MORTON,JESSICA
	09:22			REBOUND (OFF) by MONTGOMERY,LANAY
	09:15	32-35	V 3	GOOD! LAYUP by MULDROW,TEANA [PNT]
GOOD! JUMPER by WALLACE,KRISTY	08:56	32-37	V 5	
	08:34			MISSED 3PTR by MORTON,JESSICA
REBOUND (DEF) by JOHNSON,NIYA	08:34			
	08:27			FOUL by MULDROW,TEANA
GOOD! FT by DAVIS,NINA	08:27	32-38	V 6	
MISSED FT by DAVIS,NINA	08:27			
REBOUND (OFF) by MOMPRESIER,BEATRICE	08:27			
MISSED JUMPER by DAVIS,NINA	08:01			
	08:01			BLOCK by MONTGOMERY,LANAY
	08:00			REBOUND (DEF) by TEAM
FOUL by DAVIS,NINA	07:47			
	07:47			MISSED FT by HOLMES,BRIA
	07:47			REBOUND (DEADB) by TEAM
	07:47	33-38	V 5	GOOD! FT by HOLMES,BRIA
GOOD! LAYUP by MOMPRESIER,BEATRICE [PNT]	07:29	33-40	V 7	
ASSIST by JONES,ALEXIS	07:29			
	06:56			MISSED JUMPER by MORTON,JESSICA
REBOUND (DEF) by MOMPRESIER,BEATRICE	06:56			
GOOD! LAYUP by DAVIS,NINA [FB/PNT]	06:50	33-42	V 9	
ASSIST by JONES,ALEXIS	06:50			
	06:48			FOUL by PARDEE,KATRINA
MISSED FT by DAVIS,NINA	06:48			
	06:48			REBOUND (DEF) by MULDROW,TEANA
	06:48			SUB IN: SEGGIE,OLIVIA
	06:48			SUB IN: MARTIN,TYNICE
	06:48			SUB OUT: MORTON,JESSICA
	06:48			SUB OUT: PARDEE,KATRINA
	06:28			MISSED JUMPER by MONTGOMERY,LANAY
	06:28			REBOUND (OFF) by TEAM
	06:14			MISSED JUMPER by MONTGOMERY,LANAY
REBOUND (DEF) by WALLACE,KRISTY	06:14			
TURNOVER by WALLACE,KRISTY	06:08			
	06:07			STEAL by MULDROW,TEANA
	06:06			TURNOVER by MONTGOMERY,LANAY
STEAL by WALLACE,KRISTY	06:04			
MISSED 3PTR by JONES,ALEXIS	06:01			
	06:01			REBOUND (DEF) by SEGGIE,OLIVIA
	05:35	35-42	V 7	GOOD! JUMPER by MARTIN,TYNICE
	05:35			ASSIST by MULDROW,TEANA
TURNOVER by MOMPRESIER,BEATRICE	05:14			
SUB IN: BROWN,KALANI	05:14			
SUB OUT: MOMPRESIER,BEATRICE	05:14			
	05:14			SUB IN: RHODES,DESIREE

VISITORS: Baylor	Time	Score	Margin	HOME: West Virginia
	05:14			SUB OUT: MONTGOMERY,LANAY
	05:03	38-42	V 4	GOOD! 3PTR by MULDROW,TEANA
	05:03			ASSIST by HOLMES,BRIA
MISSED JUMPER by BROWN,KALANI	04:35			
REBOUND (OFF) by BROWN,KALANI	04:35			
GOOD! JUMPER by BROWN,KALANI	04:35	38-44	V 6	
	04:35			FOUL by RHODES,DESIREE
TIMEOUT media	04:35			
GOOD! FT by BROWN,KALANI	04:35	38-45	V 7	
	04:22	41-45	V 4	GOOD! 3PTR by MARTIN,TYNICE
	04:22			ASSIST by HOLMES,BRIA
GOOD! LAYUP by BROWN,KALANI [PNT]	03:58	41-47	V 6	
ASSIST by JOHNSON,NIYA	03:58			
	03:33			MISSED 3PTR by MARTIN,TYNICE
REBOUND (DEF) by DAVIS,NINA	03:33			
MISSED LAYUP by DAVIS,NINA	03:19			
REBOUND (OFF) by BROWN,KALANI	03:19			
	03:15			SUB IN: MONTGOMERY,LANAY
	03:15			SUB IN: MORTON,JESSICA
	03:15			SUB OUT: SEGGIE,OLIVIA
	03:15			SUB OUT: RHODES,DESIREE
MISSED LAYUP by DAVIS,NINA	03:13			
	03:13			REBOUND (DEF) by MONTGOMERY,LANAY
FOUL by BROWN,KALANI	03:00			
	03:00	42-47	V 5	GOOD! FT by MORTON,JESSICA
	03:00	43-47	V 4	GOOD! FT by MORTON,JESSICA
SUB IN: CAVE,KHADIJIAH	03:00			
SUB OUT: BROWN,KALANI	03:00			
	03:00			SUB IN: BREWER,ALEXIS
	03:00			SUB OUT: HOLMES,BRIA
TURNOVER by CAVE,KHADIJIAH	02:47			
SUB IN: MOMPREMIER,BEATRICE	02:47			
SUB OUT: CAVE,KHADIJIAH	02:47			
	02:35			MISSED JUMPER by MORTON,JESSICA
REBOUND (DEF) by MOMPREMIER,BEATRICE	02:35			
GOOD! JUMPER by JONES,ALEXIS [PNT]	02:24	43-49	V 6	
	02:24			FOUL by MORTON,JESSICA
GOOD! FT by JONES,ALEXIS	02:24	43-50	V 7	
	02:24			SUB IN: RAY,CHANIA
	02:24			SUB OUT: MORTON,JESSICA
	02:08			TURNOVER by BREWER,ALEXIS
STEAL by JOHNSON,NIYA	02:07			
MISSED JUMPER by JONES,ALEXIS	01:58			
	01:58			BLOCK by BREWER,ALEXIS
REBOUND (OFF) by JONES,ALEXIS	01:57			
MISSED 3PTR by WALLACE,KRISTY	01:57			
	01:57			REBOUND (DEF) by TEAM
SUB IN: PRINCE,ALEXIS	01:54			
SUB OUT: WALLACE,KRISTY	01:54			
	01:54			SUB IN: HOLMES,BRIA
	01:54			SUB OUT: BREWER,ALEXIS
FOUL by MOMPREMIER,BEATRICE	01:38			
	01:38			MISSED FT by HOLMES,BRIA
	01:38			REBOUND (DEADB) by TEAM
	01:38	44-50	V 6	GOOD! FT by HOLMES,BRIA
TIMEOUT 30SEC	01:21			
	01:21			SUB IN: BREWER,ALEXIS
	01:21			SUB OUT: MULDROW,TEANA

VISITORS: Baylor	Time	Score	Margin	HOME: West Virginia
	01:17			FOUL by BREWER,ALEXIS
GOOD! FT by DAVIS,NINA	01:17	44-51	V 7	
GOOD! FT by DAVIS,NINA	01:17	44-52	V 8	
SUB IN: WALLACE,KRISTY	01:17			
SUB OUT: JOHNSON,NIYA	01:17			
	01:06			MISSED 3PTR by BREWER,ALEXIS
REBOUND (DEF) by MOMPREMIER,BEATRICE	01:06			
MISSED JUMPER by JONES,ALEXIS	00:45			
	00:45			REBOUND (DEF) by MONTGOMERY,LANAY
	00:32	46-52	V 6	GOOD! LAYUP by MONTGOMERY,LANAY [PNT]
	00:32			ASSIST by MARTIN,TYNICE
FOUL by MOMPREMIER,BEATRICE	00:32			
	00:32	47-52	V 5	GOOD! FT by MONTGOMERY,LANAY
SUB IN: JOHNSON,NIYA	00:32			
SUB OUT: PRINCE,ALEXIS	00:32			
MISSED LAYUP by MOMPREMIER,BEATRICE	00:05			
REBOUND (OFF) by DAVIS,NINA	00:05			
GOOD! LAYUP by DAVIS,NINA [PNT]	00:00	47-54	V 7	

Baylor 71, West Virginia 61

Period 3-only	In Paint	Off T/O	2nd Chance	Fast Break	Bench	
BU	10	0	5	2	5	Score tied - 0 times
WVU	4	3	2	0	7	Lead changed - 0 times

Baylor vs West Virginia
1/30/2016; 4:00 p.m. at WVU Coliseum, Morgantown, W.Va.
Period 4 Play-By-Play

VISITORS: Baylor	Time	Score	Margin	HOME: West Virginia
	10:00			SUB IN: MARTIN, TYNICE
	10:00			SUB OUT: PARDEE, KATRINA
	09:47	49-54	V 5	GOOD! JUMPER by MARTIN, TYNICE
MISSED LAYUP by DAVIS, NINA	09:28			
REBOUND (OFF) by MOMPRESIER, BEATRICE	09:28			
	09:27			FOUL by MONTGOMERY, LANAY
MISSED JUMPER by JONES, ALEXIS	09:23			
	09:23			REBOUND (DEF) by RAY, CHANIA
FOUL by JOHNSON, NIYA	09:20			
	09:05			MISSED 3PTR by HOLMES, BRIA
REBOUND (DEF) by JONES, ALEXIS	09:05			
MISSED JUMPER by WALLACE, KRISTY	08:39			
REBOUND (OFF) by MOMPRESIER, BEATRICE	08:39			
GOOD! LAYUP by MOMPRESIER, BEATRICE [PNT]	08:36	49-56	V 7	
	08:14			MISSED JUMPER by MARTIN, TYNICE
	08:14			REBOUND (OFF) by MONTGOMERY, LANAY
	08:11			MISSED LAYUP by MONTGOMERY, LANAY
REBOUND (DEF) by JOHNSON, NIYA	08:11			
MISSED JUMPER by JONES, ALEXIS	07:48			
	07:48			REBOUND (DEF) by TEAM
	07:33			TURNOVER by MULDROW, TEANA
STEAL by MOMPRESIER, BEATRICE	07:32			
MISSED LAYUP by MOMPRESIER, BEATRICE	07:18			
REBOUND (OFF) by MOMPRESIER, BEATRICE	07:18			
TURNOVER by MOMPRESIER, BEATRICE	07:13			
	07:13			SUB IN: MORTON, JESSICA
	07:13			SUB OUT: RAY, CHANIA
	06:54			MISSED JUMPER by MARTIN, TYNICE
REBOUND (DEF) by MOMPRESIER, BEATRICE	06:54			
	06:46			FOUL by MULDROW, TEANA
MISSED FT by DAVIS, NINA	06:46			
REBOUND (DEADB) by TEAM	06:46			
GOOD! FT by DAVIS, NINA	06:46	49-57	V 8	
	06:46			MISSED 3PTR by MARTIN, TYNICE
REBOUND (DEF) by MOMPRESIER, BEATRICE	06:46			
SUB IN: PRINCE, ALEXIS	06:46			
SUB OUT: JOHNSON, NIYA	06:46			
	06:46			SUB IN: BREWER, ALEXIS
	06:46			SUB OUT: MULDROW, TEANA
	06:15			FOUL by MONTGOMERY, LANAY
	06:15			SUB IN: RHODES, DESIREE
	06:15			SUB OUT: MONTGOMERY, LANAY
MISSED LAYUP by JONES, ALEXIS	06:04			
	06:04			REBOUND (DEF) by RHODES, DESIREE
	05:54	51-57	V 6	GOOD! LAYUP by MORTON, JESSICA [FB/PNT]
MISSED LAYUP by DAVIS, NINA	05:31			
REBOUND (OFF) by PRINCE, ALEXIS	05:31			
GOOD! JUMPER by PRINCE, ALEXIS [PNT]	05:29	51-59	V 8	
	05:06	53-59	V 6	GOOD! JUMPER by MORTON, JESSICA [PNT]
GOOD! LAYUP by MOMPRESIER, BEATRICE [PNT]	04:41	53-61	V 8	
	04:41			FOUL by RHODES, DESIREE
TIMEOUT MEDIA	04:41			
MISSED FT by MOMPRESIER, BEATRICE	04:41			

VISITORS: Baylor	Time	Score	Margin	HOME: West Virginia
	04:41			REBOUND (DEF) by RHODES,DESIREE
SUB IN: JOHNSON,NIYA	04:41			
SUB OUT: JONES,ALEXIS	04:41			
FOUL by MOMPREMIER,BEATRICE	04:24			
	04:24			MISSED FT by BREWER,ALEXIS
	04:24			REBOUND (DEADB) by TEAM
	04:24	54-61	V 7	GOOD! FT by BREWER,ALEXIS
MISSED JUMPER by WALLACE,KRISTY	04:01			
	04:01			BLOCK by RHODES,DESIREE
REBOUND (OFF) by TEAM	04:01			
GOOD! LAYUP by MOMPREMIER,BEATRICE [PNT]	03:56	54-63	V 9	
	03:47			TIMEOUT 30SEC
	03:47			SUB IN: MULDROW,TEANA
	03:47			SUB IN: MONTGOMERY,LANAY
	03:47			SUB OUT: BREWER,ALEXIS
	03:47			SUB OUT: RHODES,DESIREE
	03:34	56-63	V 7	GOOD! JUMPER by MARTIN,TYNICE
MISSED JUMPER by WALLACE,KRISTY	03:18			
	03:18			REBOUND (DEF) by MONTGOMERY,LANAY
	02:57			MISSED 3PTR by MARTIN,TYNICE
REBOUND (DEF) by JOHNSON,NIYA	02:57			
MISSED 3PTR by PRINCE,ALEXIS	02:27			
REBOUND (OFF) by MOMPREMIER,BEATRICE	02:27			
GOOD! LAYUP by MOMPREMIER,BEATRICE [PNT]	02:23	56-65	V 9	
FOUL by DAVIS,NINA	02:06			
	02:06			MISSED FT by MORTON,JESSICA
	02:06			REBOUND (DEADB) by TEAM
	02:06	57-65	V 8	GOOD! FT by MORTON,JESSICA
MISSED JUMPER by JOHNSON,NIYA	01:41			
	01:41			BLOCK by MONTGOMERY,LANAY
	01:39			REBOUND (DEF) by MORTON,JESSICA
	01:35			MISSED LAYUP by MARTIN,TYNICE
REBOUND (DEF) by MOMPREMIER,BEATRICE	01:35			
GOOD! LAYUP by WALLACE,KRISTY [PNT]	01:06	57-67	V 10	
TIMEOUT 30SEC	01:03			
SUB IN: JONES,ALEXIS	01:03			
SUB OUT: PRINCE,ALEXIS	01:03			
	00:58			TIMEOUT 30SEC
	00:58			SUB IN: BREWER,ALEXIS
	00:58			SUB OUT: MONTGOMERY,LANAY
	00:56	59-67	V 8	GOOD! JUMPER by MORTON,JESSICA
	00:48			FOUL by MORTON,JESSICA
GOOD! FT by JONES,ALEXIS	00:48	59-68	V 9	
GOOD! FT by JONES,ALEXIS	00:48	59-69	V 10	
	00:40			TIMEOUT TEAM
	00:40	61-69	V 8	GOOD! JUMPER by MORTON,JESSICA
SUB IN: PRINCE,ALEXIS	00:40			
SUB OUT: MOMPREMIER,BEATRICE	00:40			
	00:35			FOUL by MULDROW,TEANA
GOOD! FT by WALLACE,KRISTY	00:35	61-70	V 9	
GOOD! FT by WALLACE,KRISTY	00:35	61-71	V 10	
SUB IN: MOMPREMIER,BEATRICE	00:35			
SUB OUT: PRINCE,ALEXIS	00:35			
	00:35			SUB IN: RAY,CHANIA
	00:35			SUB OUT: MULDROW,TEANA
	00:30			MISSED JUMPER by MORTON,JESSICA
REBOUND (DEF) by DAVIS,NINA	00:30			

Baylor 71, West Virginia 61

Period 4-only	In Paint	Off T/O	2nd Chance	Fast Break	Bench	
BU	12	0	8	0	2	Score tied - 0 times
WVU	4	0	0	2	14	Lead changed - 0 times

Baylor vs West Virginia

1/30/2016; 4:00 p.m. at WVU Coliseum, Morgantown, W.Va.

Scoring/Runs Reference

Baylor		Period 1	West Virginia	Baylor	Period 2	West
		Score		Score		
		0-2 2	RAY LAYUP - 09:58		X	HOLMES LAYUF
09:44 - WALLACE TURN	TO	X	MONTGOMERY LAYUP - 09:33	09:40 - JOHNSON LAYUP	X	MARTIN TURN
			MONTGOMERY TURN - 09:31	09:21 - DAVIS JUMPER	2P 16-17 1	BREWER LAYUF
09:22 - JONES JUMPER		X			X	MARTIN 3PTF
09:09 - MOMPRESIER LAYUP		2P 2-2 0		08:44 - JONES JUMPER	X	
	TO		MONTGOMERY TURN - 08:51	08:28 - DAVIS JUMPER	X	
08:41 - MOMPRESIER LAYUP		X			X	MARTIN JUMPEF
	TO		RAY TURN - 08:32	07:59 - JONES JUMPER	X	
08:20 - JONES JUMPER		X		07:51 - BROWN LAYUP	2P 18-17 -1	
		2-4 2 2PF	HOLMES LAYUP - 08:11		18-18 0 1	HOLMES FT
07:54 - MOMPRESIER JUMPER		2P 4-4 0	MULDROW JUMPER - 07:37		X	HOLMES FT
	TO	X		07:45 - JONES LAYUP	X	
07:24 - WALLACE TURN	TO	X	MONTGOMERY JUMPER - 06:52			HOLMES TURN
06:33 - JONES FT		X		07:27 - JOHNSON LAYUP	2P 20-18 -2	MARTIN TURN
06:33 - JONES FT		1 5-4 -1				
	TO		MORTON TURN - 06:29	06:57 - WALLACE JUMPER	2P 22-18 -4	MORTON JUMPEF
06:04 - JOHNSON LAYUP		X			X	MORTON 3PTF
			MARTIN JUMPER - 05:46		X	
		5-6 1 2P	MONTGOMERY JUMPER - 05:41	06:18 - WALLACE LAYUP	X	
05:29 - DAVIS JUMPER		X		06:12 - CAVE LAYUP	2P 24-18 -6	
05:22 - MOMPRESIER JUMPER		X			24-20 -4 2P	PARDEE JUMPEF
		5-9 4 3	MARTIN 3PTR - 05:14	05:23 - JOHNSON LAYUP	X	
04:55 - JOHNSON TURN	TO	X	MONTGOMERY LAYUP - 04:40	05:22 - JOHNSON TURN	TO	
					24-21 -3 1	HOLMES FT
04:31 - DAVIS JUMPER		X			X	HOLMES FT
04:30 - DAVIS FT		X		04:56 - JONES FT	1 25-21 -4	
04:30 - DAVIS FT		X		04:56 - JONES FT	1 26-21 -5	
			MONTGOMERY JUMPER - 04:11		26-23 -3 2	MARTIN JUMPEF
04:04 - JONES TURN	TO	X			26-24 -2 1	MARTIN FT
		5-10 5 1	BREWER FT - 03:40	04:16 - WALLACE 3PTR	X	
		5-11 6 1	BREWER FT - 03:40		26-26 0 2P	MONTGOMERY LAYUF
03:31 - JONES JUMPER		2P 7-11 4		03:41 - CAVE JUMPER	X	
			MORTON JUMPER - 03:12		26-28 2 2P	MONTGOMERY LAYUF
03:04 - JOHNSON LAYUP		X		03:05 - DAVIS JUMPER	X	
		7-13 6 2P	MARTIN LAYUP - 02:49		26-29 3 1	HOLMES FT
02:27 - JONES JUMPER		X			26-30 4 1	HOLMES FT
	TO		HOLMES TURN - 02:20	02:43 - JONES JUMPER	2 28-30 2	
02:09 - JONES JUMPER		X			X	PARDEE 3PTF
			HOLMES FT - 01:40	02:22 - JONES JUMPER	X	
			HOLMES FT - 01:40	02:09 - MOMPRESIER LAYUP	X	
01:36 - BROWN LAYUP		2PF 9-13 4		02:08 - MOMPRESIER LAYUP	X	
		9-16 7 3	HOLMES 3PTR - 01:23	02:04 - MOMPRESIER LAYUP	X	
00:50 - JONES JUMPER		X		02:02 - MOMPRESIER LAYUP	2P 30-30 0	

			X
		9-17 8	1
00:30 - BROWN FT	1	10-17 7	
00:30 - BROWN FT	1	11-17 6	
			X
00:03 - JONES 3PTR	3	14-17 3	

BREWER FT - 00:43

BREWER FT - 00:43

HOLMES 3PTR - 00:30

01:28 - JONES LAYUP

01:28 - JONES FT

00:29 - JONES JUMPER

TO PARDEE TURN

2 ^P	32-30 -2
1	33-30 -3

X

X

2	35-30 -5
---	-------------

X

X

X

Period 3			
Baylor	Score		
			X
09:33 - DAVIS LAYUP	X		
			X
		35-32 -3	2 ^P
08:56 - WALLACE JUMPER	2	37-32 -5	
			X
08:27 - DAVIS FT	1	38-32 -6	
08:27 - DAVIS FT	X		
08:01 - DAVIS JUMPER	X		
			X
		38-33 -5	1
07:29 - MOMPRESMIER LAYUP	2 ^P	40-33 -7	
			X
06:50 - DAVIS LAYUP	2 ^{PF}	42-33 -9	
06:48 - DAVIS FT	X		
			X
			X
06:08 - WALLACE TURN	TO		
			TO
06:01 - JONES 3PTR	X		
		42-35 -7	2
05:14 - MOMPRESMIER TURN	TO		
		42-38 -4	3
04:35 - BROWN JUMPER	X		
04:35 - BROWN JUMPER	2	44-38 -6	
04:35 - BROWN FT	1	45-38 -7	
		45-41 -4	3
03:58 - BROWN LAYUP	2 ^P	47-41 -6	
			X
03:19 - DAVIS LAYUP	X		
03:13 - DAVIS LAYUP	X		
		47-42 -5	1
		47-43 -4	1
02:47 - CAVE TURN	TO		
			X
02:24 - JONES JUMPER	2 ^P	49-43 -6	
02:24 - JONES FT	1	50-43 -7	
			TO
01:58 - JONES JUMPER	X		
01:57 - WALLACE 3PTR	X		

West Virginia

PARDEE JUMPER - 09:44

MORTON 3PTR - 09:22

MULDROW LAYUP - 09:15

MORTON 3PTR - 08:34

HOLMES FT - 07:47

HOLMES FT - 07:47

MORTON JUMPER - 06:56

MONTGOMERY JUMPER - 06:28

MONTGOMERY JUMPER - 06:14

MONTGOMERY TURN - 06:06

MARTIN JUMPER - 05:35

MULDROW 3PTR - 05:03

MARTIN 3PTR - 04:22

MARTIN 3PTR - 03:33

MORTON FT - 03:00

MORTON FT - 03:00

MORTON JUMPER - 02:35

BREWER TURN - 02:08

Period 4			
Baylor	Score		West
		54-49 -5	2
09:28 - DAVIS LAYUP	X		
09:23 - JONES JUMPER	X		
			X
08:39 - WALLACE JUMPER	X		
08:36 - MOMPRESMIER LAYUP	2 ^P	56-49 -7	
			X
			X
07:48 - JONES JUMPER	X		
			TO
07:18 - MOMPRESMIER LAYUP	X		
07:13 - MOMPRESMIER TURN	TO		
			X
06:46 - DAVIS FT	X		
06:46 - DAVIS FT	1	57-49 -8	
			X
06:04 - JONES LAYUP	X		
		57-51 -6	2 ^{PF}
05:31 - DAVIS LAYUP	X		
05:29 - PRINCE JUMPER	2 ^P	59-51 -8	
		59-53 -6	2 ^P
04:41 - MOMPRESMIER LAYUP	2 ^P	61-53 -8	
04:41 - MOMPRESMIER FT	X		
			X
		61-54 -7	1
04:01 - WALLACE JUMPER	X		
03:56 - MOMPRESMIER LAYUP	2 ^P	63-54 -9	
		63-56 -7	2
03:18 - WALLACE JUMPER	X		
			X
02:27 - PRINCE 3PTR	X		
02:23 - MOMPRESMIER LAYUP	2 ^P	65-56 -9	
			X
		65-57 -8	1
01:41 - JOHNSON JUMPER	X		
			X
01:06 - WALLACE LAYUP	2 ^P	67-57 -10	
		67-59 -8	2
00:48 - JONES FT	1	68-59 -9	
00:48 - JONES FT	1	69-59 -10	

MARTIN 3PTF

MARTIN JUMPEF

MORTON JUMPEF

MONTGOMERY LAYUF

MARTIN JUMPEF

MARTIN JUMPEF

HOLMES 3PTF

MARTIN JUMPEF

MONTGOMERY LAYUF

MULDROW TURN

MARTIN JUMPEF

MARTIN 3PTF

MORTON LAYUF

MORTON JUMPEF

BREWER FT

BREWER FT

MARTIN JUMPEF

MARTIN 3PTF

MORTON FT

MORTON FT

MARTIN LAYUF

MORTON JUMPEF

			X
		50-44 -6	1
01:17 - DAVIS FT	1	51-44 -7	
01:17 - DAVIS FT	1	52-44 -8	
			X
00:45 - JONES JUMPER	X		
		52-46 -6	2 ^P
		52-47 -5	1
00:05 - MOMPRIER LAYUP	X		
00:00 - DAVIS LAYUP	2 ^P	54-47 -7	

HOLMES FT - 01:38

HOLMES FT - 01:38

00:35 - WALLACE FT

00:35 - WALLACE FT

BREWER 3PTR - 01:06

MONTGOMERY LAYUP - 00:32

MONTGOMERY FT - 00:32

		69-61 -8	2
1		70-61 -9	
1		71-61 -10	
			X

MORTON JUMPEF

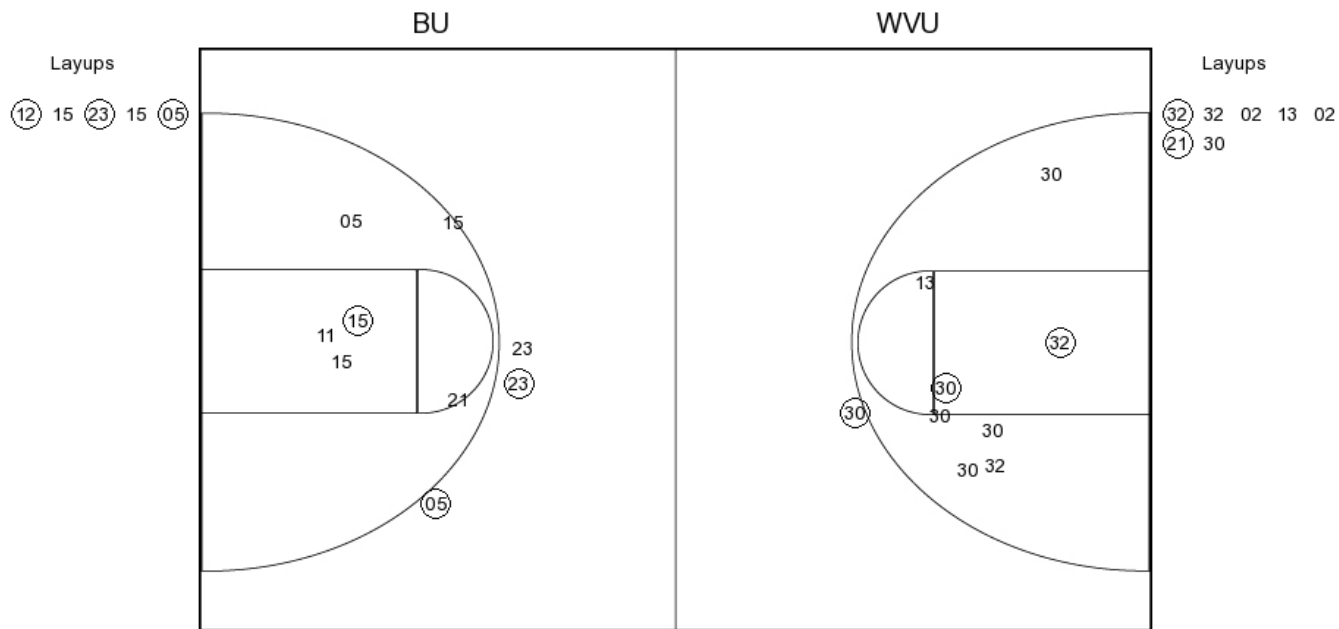
MORTON JUMPEF

Baylor vs West Virginia

OFFICIAL SHOT CHART

1/30/2016 at WVU Coliseum, Morgantown, W.Va.

PERIOD 1



BU PERIOD 1

FG Made	14
FG Attempted	39
3PFG Made	1
3PFG Attempted	2

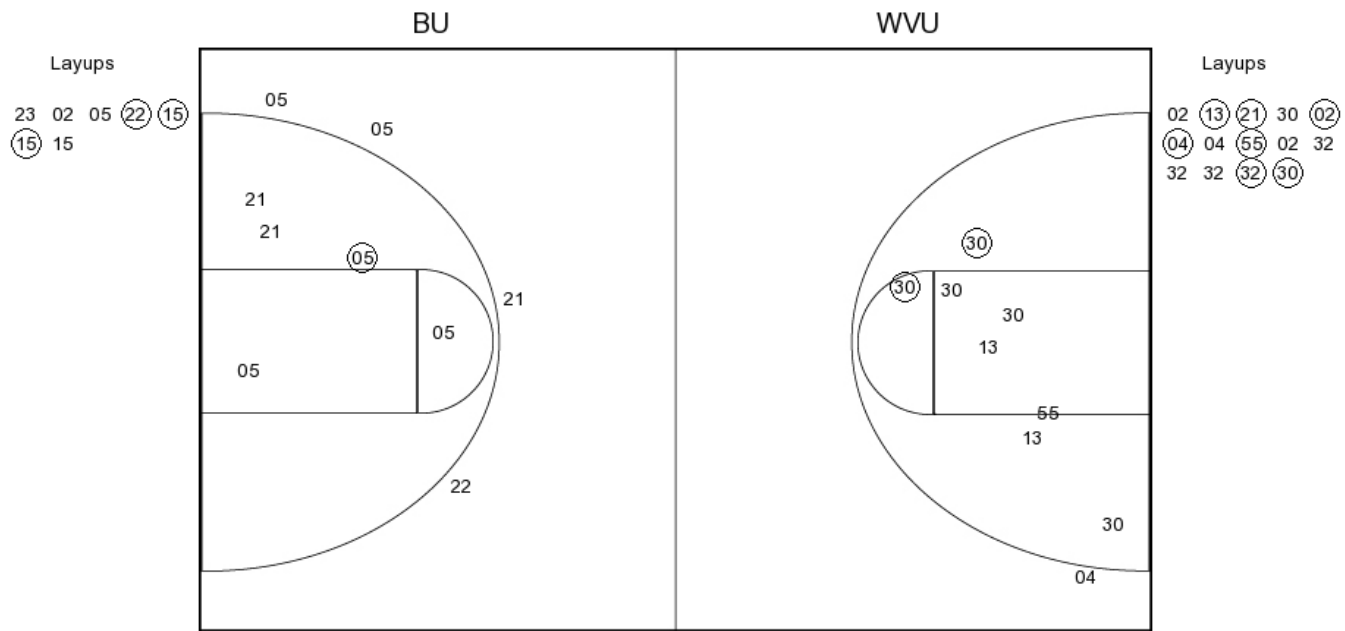
WVU PERIOD 1

FG Made	10
FG Attempted	30
3PFG Made	2
3PFG Attempted	7

Baylor vs West Virginia
OFFICIAL SHOT CHART

1/30/2016 at WVU Coliseum, Morgantown, W.Va.

PERIOD 2



BU PERIOD 2

FG Made
 FG Attempted
 3PFG Made
 3PFG Attempted

WVU PERIOD 2

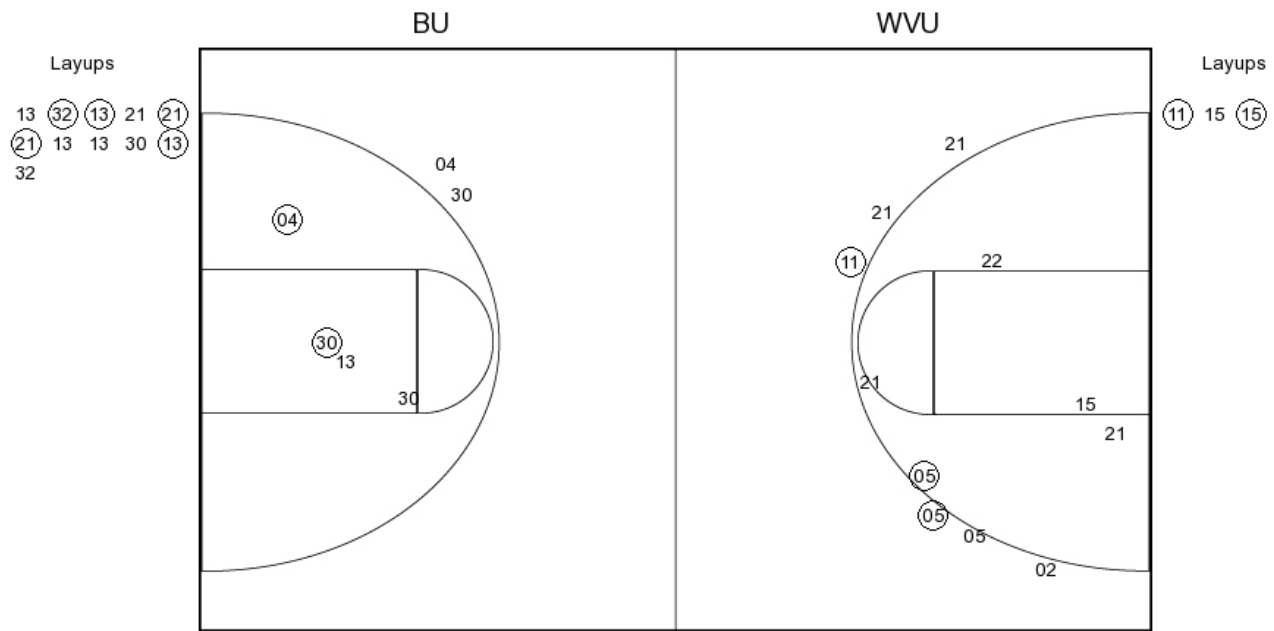
FG Made
 FG Attempted
 3PFG Made
 3PFG Attempted

Baylor vs West Virginia

OFFICIAL SHOT CHART

1/30/2016 at WVU Coliseum, Morgantown, W.Va.

PERIOD 3



BU PERIOD 3

FG Made	13
FG Attempted	34
3PFG Made	0
3PFG Attempted	3

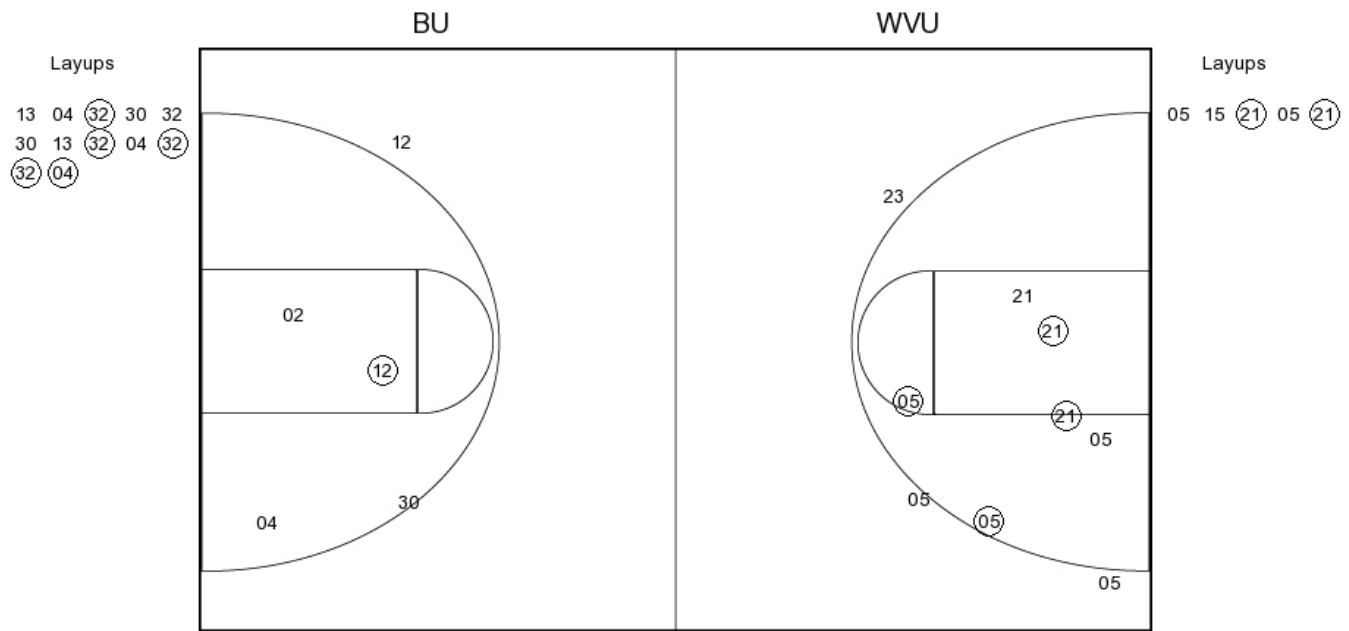
WVU PERIOD 3

FG Made	11
FG Attempted	28
3PFG Made	2
3PFG Attempted	9

Baylor vs West Virginia
OFFICIAL SHOT CHART

1/30/2016 at WVU Coliseum, Morgantown, W.Va.

PERIOD 4



BU PERIOD 4

FG Made
 FG Attempted
 3PFG Made
 3PFG Attempted

WVU PERIOD 4

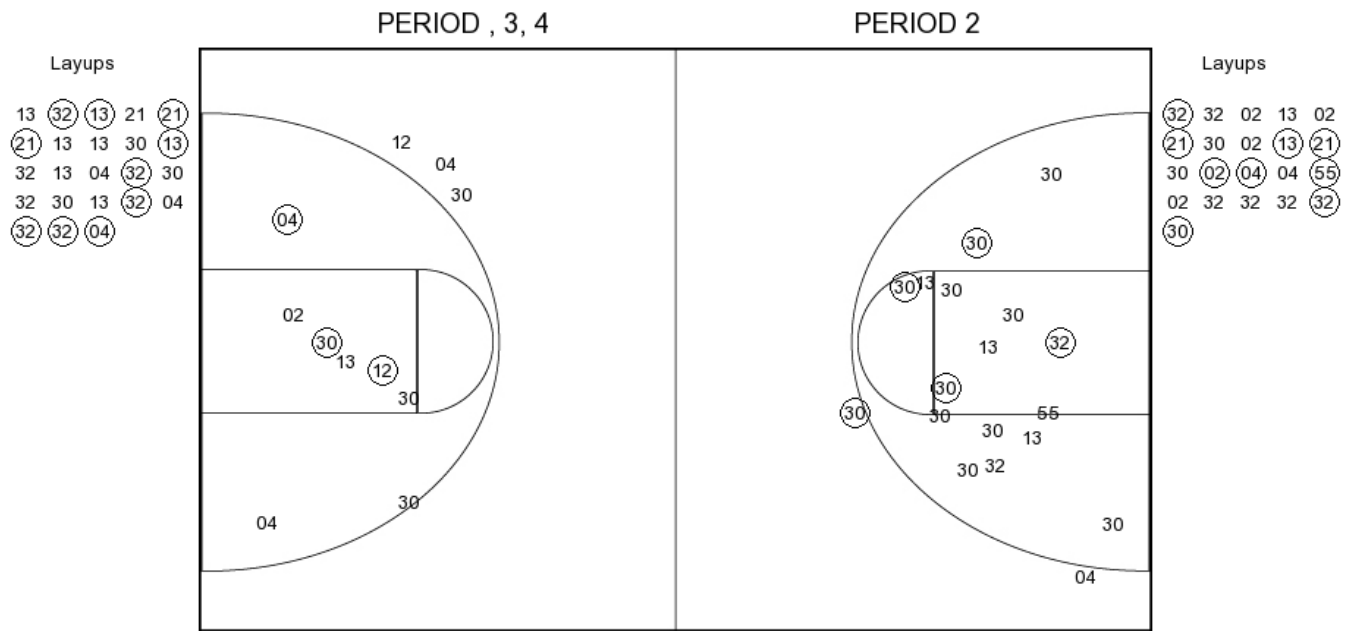
FG Made
 FG Attempted
 3PFG Made
 3PFG Attempted

Baylor vs West Virginia

OFFICIAL SHOT CHART

1/30/2016 at WVU Coliseum, Morgantown, W.Va.

Baylor



BU PERIOD 1

FG Made	14
FG Attempted	39
3PFG Made	1
3PFG Attempted	2

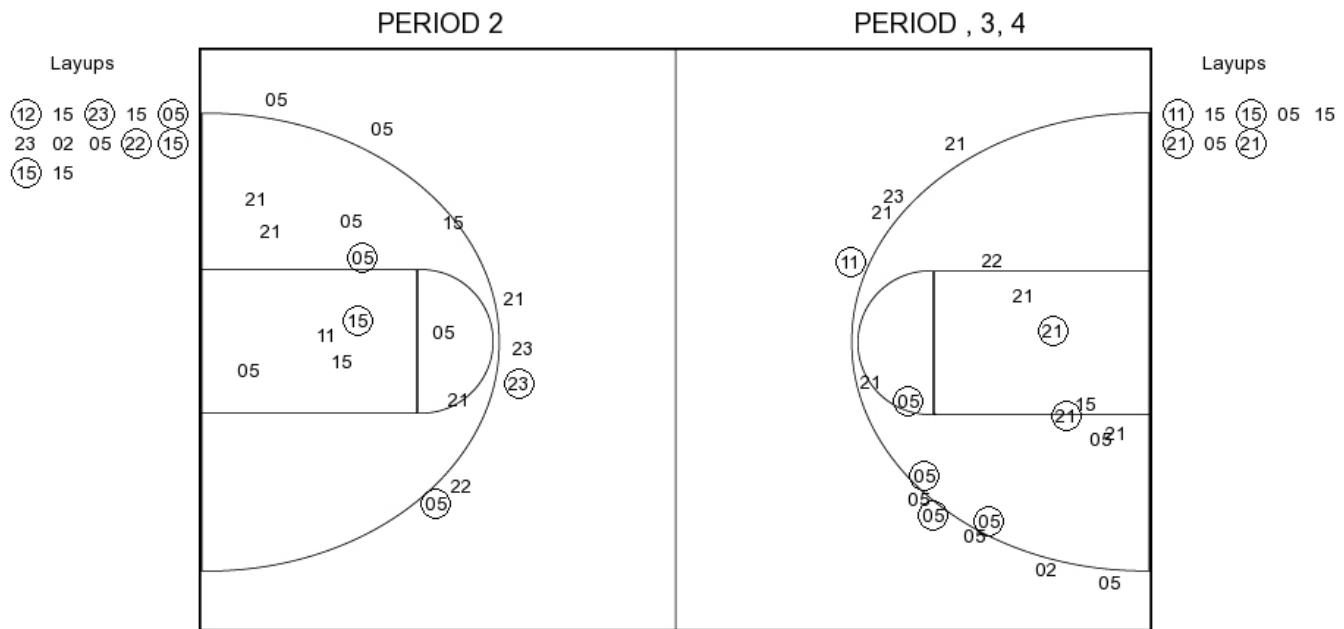
BU PERIOD 2

FG Made	
FG Attempted	
3PFG Made	
3PFG Attempted	

Baylor vs West Virginia
OFFICIAL SHOT CHART

1/30/2016 at WVU Coliseum, Morgantown, W.Va.

West Virginia



WVU PERIOD 1

FG Made	10
FG Attempted	30
3PFG Made	2
3PFG Attempted	7

WVU PERIOD 2

FG Made	
FG Attempted	
3PFG Made	
3PFG Attempted	