



WEST VIRGINIA VS. KANSAS

1/16/2016

WVU Coliseum, Morgantown, W.Va.

FINAL STATS

West Virginia

(15-4, 4-2)

72

Kansas

(5-12, 0-6)

35

Start Time: 7:00 p.m.

Officials: Dee Kantner, Beverly Roberts, Mark Zentz

Attendance: 4006

Start Time: 7:05 End Time: 8:51

Official Basketball Box Score -- Game Totals -- Final Statistics

Kansas vs West Virginia

1/16/2016 7:00 p.m. at WVU Coliseum, Morgantown, W.Va.

Kansas 35 - 5-12, 0-6

##	Player	S	Total			3-Ptr			Rebounds			PF	TP	A	TO	Blk	Stl	Min
			FG	FGA	3PT	FG	FGA	FT	F	TA	Off							
03	ALDRIDGE,LAUREN	g	4	12	2	7	0	0	0	2	2	0	10	1	5	0	1	36
12	O'NEAL,TIMEKA	g	1	5	1	3	0	0	1	0	1	0	3	1	2	0	2	18
22	CHEADLE,CHAYLA	g	1	6	0	1	1	4	2	1	3	4	3	0	1	0	0	20
33	KOPATICH,KYLEE	g	2	13	0	2	5	6	0	7	7	3	9	1	3	1	2	34
55	JOHNSON,TYLER	f	1	1	0	0	0	0	1	1	2	3	2	1	2	3	0	23
04	BROWN,JADA		0	4	0	0	0	0	1	0	1	3	0	0	1	0	0	19
15	ROBERTSON,AISIA		0	3	0	0	0	0	0	5	5	3	0	0	2	1	1	18
20	CHRISTOPHER,JAYDE		0	2	0	0	2	2	0	0	0	0	2	0	2	0	1	15
25	MANNINGALLEN,CAELYI		3	6	0	0	0	0	6	2	8	4	6	0	3	2	0	17
TEAM									2	3	5	0		4				
TOTALS			12	52	3	13	8	12	13	21	34	20	35	4	25	7	7	200

Deadball Rebounds: 2,0

FG %	1st Half:	5-24	20.8%	2nd Half:	7-28	25.0%	Game:	12-52	23.1%	4th Qtr	3-16	18.8%
	1st Qtr	3-15	20.0%	2nd Qtr	2-9	22.2%	3rd Qtr	4-12	33.3%			
3FG %	1st Half:	2-10	20.0%	2nd Half:	1-3	33.3%	Game:	3-13	23.1%	4th Qtr	0-2	00.0%
	1st Qtr	2-7	28.6%	2nd Qtr	0-3	00.0%	3rd Qtr	1-1	100.0%			
FT %	1st Half:	2-6	33.3%	2nd Half:	6-6	100.0%	Game:	8-12	66.7%	4th Qtr	2-2	100.0%
	1st Qtr	1-2	50.0%	2nd Qtr	1-4	25.0%	3rd Qtr	4-4	100.0%			

West Virginia 72 - 15-4, 4-2

##	Player	S	Total			3-Ptr			Rebounds			PF	TP	A	TO	Blk	Stl	Min
			FG	FGA	3PT	FG	FGA	FT	F	TA	Off							
12	RAY.CHANIA	g	1	3	0	1	1	2	1	1	2	1	3	4	2	0	0	20
15	MONTGOMERY.LANAY	c	5	7	0	0	4	6	7	10	17	0	14	1	4	3	1	28
22	PARDEE.KATRINA	g	0	3	0	2	0	0	0	1	1	2	0	0	1	0	1	12
23	HOLMES.BRIA	g	5	14	0	2	4	5	2	4	6	1	14	5	2	2	2	33
32	ROBERSON.ARIELLE	f	1	1	0	0	0	4	1	7	8	1	2	0	0	1	1	24
02	BREWER.ALEXIS		2	5	1	4	0	0	1	1	2	1	5	1	0	0	2	13
03	SEGGIE.OLIVIA		0	0	0	0	0	0	0	0	0	0	0	0	0	0	0	3
05	MARTIN.TYNICE		8	12	0	2	2	2	0	1	1	2	18	2	2	0	2	21
11	MULDROW.TEANA		4	9	0	3	2	4	0	1	1	1	10	0	0	2	0	21
20	RHODES.DESIREE		0	0	0	0	1	2	0	0	0	2	1	1	1	0	0	5
21	MORTON.JESSICA		2	8	1	3	0	0	1	1	2	2	5	0	2	2	0	17
24	MARTIN.ANJA		0	0	0	0	0	0	0	0	0	0	0	0	0	0	0	3
TEAM									4	2	6	0		0				
TOTALS			28	62	2	17	14	25	17	29	46	13	72	14	14	10	9	200

Deadball Rebounds: 7,0

FG %	1st Half:	12-31	38.7%	2nd Half:	16-31	51.6%	Game:	28-62	45.2%	4th Qtr	8-15	53.3%
	1st Qtr	6-17	35.3%	2nd Qtr	6-14	42.9%	3rd Qtr	8-16	50.0%			
3FG %	1st Half:	1-11	9.1%	2nd Half:	1-6	16.7%	Game:	2-17	11.8%	4th Qtr	1-2	50.0%
	1st Qtr	0-5	00.0%	2nd Qtr	1-6	16.7%	3rd Qtr	0-4	00.0%			
FT %	1st Half:	7-11	63.6%	2nd Half:	7-14	50.0%	Game:	14-25	56.0%	4th Qtr	5-7	71.4%
	1st Qtr	3-4	75.0%	2nd Qtr	4-7	57.1%	3rd Qtr	2-7	28.6%			

Officials: Dee Kantner, Beverly Roberts, Mark Zentz

Technical Fouls: Kansas- None. West Virginia- None.

Attendance: 4006

Start Time: 7:05 End Time: 8:51

Score by periods	1st	2nd	3rd	4th	Total
Kansas	9	5	13	8	35
West Virginia	15	17	18	22	72

Points	In Paint	Off T/O	2nd 2nd Chance	Fast Break	Bench
KU	16	2	9	2	8
WVU	44	21	9	12	39

Last FG - KU 4th-04:42, WVU 4th-01:39.

Largest lead - Kansas by 3 1st-05:29; West Virginia by 37 4th-02:22

KU led for 3:36. WVU led for 34:32. Game was tied for 1:31.

Score tied - 2 times
Lead changed - 4 times

Official Basketball Box Score -- Game Totals -- First Half Statistics

Kansas vs West Virginia

1/16/2016 7:00 p.m. at WVU Coliseum, Morgantown, W.Va.

Kansas 14 • 5-12, 0-6

##	Player	S	Total			Rebounds			PF	TP	A	TO	Blk	Stl	Min
			FG-FGA	3PT FG-FGA	FT-FTA	Off Reb	Def Reb	Tot Reb							
03	ALDRIDGE,LAUREN	g	1-4	1-4	0-0	0	2	2	0	3	1	3	0	1	18
12	O'NEAL,TIMEKA	g	1-3	1-3	0-0	1	0	1	0	3	1	1	0	1	9
22	CHEADLE,CHAYLA	g	1-3	0-1	1-4	1	1	2	1	3	0	1	0	0	12
33	KOPATICH,KYLEE	g	1-7	0-2	1-2	0	4	4	1	3	0	2	1	2	19
55	JOHNSON,TYLER	f	0-0	0-0	0-0	1	1	2	1	0	1	2	1	0	14
04	BROWN,JADA		0-0	0-0	0-0	1	0	1	1	0	0	0	0	0	7
15	ROBERTSON,AISIA		0-3	0-0	0-0	0	3	3	1	0	0	0	1	0	9
20	CHRISTOPHER,JAYDE		0-1	0-0	0-0	0	0	0	0	0	0	2	0	0	6
25	MANNINGALLEN,CAELYI		1-3	0-0	0-0	0	0	0	2	2	0	1	2	0	6
TEAM						1	1	2	0		3				
Totals			5-24	2-10	2-6	5	12	17	7	14	3	15	5	4	100

FG %	1st Qtr	3-15	20.0%	2nd Qtr	2-9	22.2%	Half:	5-24	20.8%
3FG %	1st Qtr	2-7	28.6%	2nd Qtr	0-3	00.0%	Half:	2-10	20.0%
FT %	1st Qtr	1-2	50.0%	2nd Qtr	1-4	25.0%	Half:	2-6	33.3%

West Virginia 32 • 15-4, 4-2

##	Player	S	Total			Rebounds			PF	TP	A	TO	Blk	Stl	Min
			FG-FGA	3PT FG-FGA	FT-FTA	Off Reb	Def Reb	Tot Reb							
12	RAY,CHANIA	g	1-2	0-0	1-2	1	0	1	1	3	1	1	0	0	11
15	MONTGOMERY,LANAY	c	3-4	0-0	2-4	3	6	9	0	8	0	4	2	0	16
22	PARDEE,KATRINA	g	0-1	0-1	0-0	0	1	1	0	0	0	1	0	0	7
23	HOLMES,BRIA	g	2-8	0-2	3-3	1	4	5	0	7	2	0	2	2	19
32	ROBERSON,ARIELLE	f	0-0	0-0	0-0	1	3	4	0	0	0	0	1	0	14
02	BREWER,ALEXIS		0-2	0-2	0-0	0	0	0	0	0	0	0	0	2	5
03	SEGGIE,OLIVIA		0-0	0-0	0-0	0	0	0	0	0	0	0	0	0	0
05	MARTIN,TYNICE		3-5	0-1	0-0	0	1	1	2	6	1	2	0	1	9
11	MULDROW,TEANA		1-3	0-2	1-2	0	0	0	1	3	0	0	1	0	10
20	RHODES,DESIREE		0-0	0-0	0-0	0	0	0	0	0	0	0	0	0	0
21	MORTON,JESSICA		2-6	1-3	0-0	0	0	0	1	5	0	1	0	0	9
24	MARTIN,ANJA		0-0	0-0	0-0	0	0	0	0	0	0	0	0	0	0
TEAM						2	1	3	0		0				
Totals			12-31	1-11	7-11	8	16	24	5	32	4	9	6	5	100

FG %	1st Qtr	6-17	35.3%	2nd Qtr	6-14	42.9%	Half:	12-31	38.7%
3FG %	1st Qtr	0-5	00.0%	2nd Qtr	1-6	16.7%	Half:	1-11	09.1%
FT %	1st Qtr	3-4	75.0%	2nd Qtr	4-7	57.1%	Half:	7-11	63.6%

Officials: Dee Kantner, Beverly Roberts, Mark Zentz
 Technical Fouls: Kansas- None. West Virginia- None.
 Start Time: 7:05 End Time: 8:51

Score by periods	1st	2nd	3rd	4th	Total
Kansas	9	5	13	8	35
West Virginia	15	17	18	22	72

Points	In Paint	Off T/O	2nd 2nd Chance	Fast Fast Break	Bench
KU	6	2	0	2	2
	20	14	7	8	14

Last FG - KU 2nd-02:28, WVU 2nd-03:17.

KU led for 3:36. WVU led for 14:33. Game was tied for 1:31.

Score tied - 2 times
 Lead changed - 4 times

Kansas vs West Virginia
1/16/2016; 7:00 p.m. at WVU Coliseum, Morgantown, W.Va.
Period 1 Play-By-Play

VISITORS: Kansas	Time	Score	Margin	HOME: West Virginia
	09:47			TURNOVER by MONTGOMERY,LANAY
MISSED JUMPER by CHEADLE,CHAYLA	09:34			
	09:34			BLOCK by MONTGOMERY,LANAY
REBOUND (OFF) by JOHNSON,TYLER	09:32			
MISSED 3PTR by O'NEAL,TIMEKA	09:25			
	09:25			REBOUND (DEF) by PARDEE,KATRINA
	09:09	2-0	H 2	GOOD! LAYUP by RAY,CHANIA [PNT]
TURNOVER by CHEADLE,CHAYLA	08:54			
	08:39			MISSED LAYUP by HOLMES,BRIA
	08:39			REBOUND (OFF) by TEAM
	08:28			MISSED 3PTR by HOLMES,BRIA
REBOUND (DEF) by TEAM	08:28			
GOOD! 3PTR by ALDRIDGE,LAUREN	08:12	2-3	V 1	
ASSIST by O'NEAL,TIMEKA	08:12			
	07:55			MISSED JUMPER by HOLMES,BRIA
	07:55			REBOUND (OFF) by MONTGOMERY,LANAY
	07:53			MISSED JUMPER by MONTGOMERY,LANAY
BLOCK by JOHNSON,TYLER	07:53			
REBOUND (DEF) by JOHNSON,TYLER	07:51			
MISSED 3PTR by O'NEAL,TIMEKA	07:44			
	07:44			REBOUND (DEF) by ROBERSON,ARIELLE
FOUL by CHEADLE,CHAYLA	07:34			
	07:34			MISSED FT by RAY,CHANIA
	07:34			REBOUND (DEADB) by TEAM
	07:34	3-3	T	GOOD! FT by RAY,CHANIA
TURNOVER by JOHNSON,TYLER	07:16			
	07:15			STEAL by HOLMES,BRIA
	06:54	5-3	H 2	GOOD! LAYUP by MONTGOMERY,LANAY [PNT]
GOOD! 3PTR by O'NEAL,TIMEKA	06:37	5-6	V 1	
ASSIST by ALDRIDGE,LAUREN	06:37			
	06:25			MISSED 3PTR by PARDEE,KATRINA
REBOUND (DEF) by ALDRIDGE,LAUREN	06:25			
SUB IN: BROWN,JADA	06:20			
SUB IN: CHRISTOPHER,JAYDE	06:20			
SUB IN: MANNINGALLEN,CAELYNN	06:20			
SUB OUT: O'NEAL,TIMEKA	06:20			
SUB OUT: CHEADLE,CHAYLA	06:20			
SUB OUT: JOHNSON,TYLER	06:20			
	06:20			SUB IN: MARTIN,TYNICE
	06:20			SUB OUT: PARDEE,KATRINA
	05:59			FOUL by RAY,CHANIA
MISSED JUMPER by MANNINGALLEN,CAELYNN	05:45			
	05:45			REBOUND (DEF) by ROBERSON,ARIELLE
	05:38			MISSED JUMPER by HOLMES,BRIA
	05:38			REBOUND (OFF) by MONTGOMERY,LANAY
	05:35			TURNOVER by MONTGOMERY,LANAY
STEAL by KOPATICH,KYLEE	05:33			
GOOD! LAYUP by KOPATICH,KYLEE [FB/PNT]	05:29	5-8	V 3	
	05:11			MISSED 3PTR by MARTIN,TYNICE
	05:11			REBOUND (OFF) by ROBERSON,ARIELLE
	04:48	7-8	V 1	GOOD! LAYUP by MONTGOMERY,LANAY [PNT]
	04:48			ASSIST by RAY,CHANIA
MISSED JUMPER by CHRISTOPHER,JAYDE	04:36			

VISITORS: Kansas	Time	Score	Margin	HOME: West Virginia
	04:36			REBOUND (DEF) by MONTGOMERY,LANAY
	04:29			MISSED LAYUP by HOLMES,BRIA
BLOCK by MANNINGALLEN,CAELYNN	04:29			
REBOUND (DEF) by ALDRIDGE,LAUREN	04:26			
MISSED 3PTR by ALDRIDGE,LAUREN	04:20			
	04:20			REBOUND (DEF) by MONTGOMERY,LANAY
	04:03			TURNOVER by RAY,CHANIA
STEAL by KOPATICH,KYLEE	04:00			
MISSED LAYUP by KOPATICH,KYLEE	03:48			
	03:48			REBOUND (DEF) by ROBERSON,ARIELLE
FOUL by MANNINGALLEN,CAELYNN	03:39			
	03:39			TIMEOUT MEDIA
	03:39	8-8	T	GOOD! FT by HOLMES,BRIA
	03:39	9-8	H 1	GOOD! FT by HOLMES,BRIA
SUB IN: JOHNSON,TYLER	03:39			
SUB IN: O'NEAL,TIMEKA	03:39			
SUB IN: ROBERTSON,AISIA	03:39			
SUB IN: CHEADLE,CHAYLA	03:39			
SUB OUT: ALDRIDGE,LAUREN	03:39			
SUB OUT: BROWN,JADA	03:39			
SUB OUT: KOPATICH,KYLEE	03:39			
SUB OUT: MANNINGALLEN,CAELYNN	03:39			
	03:39			SUB IN: MORTON,JESSICA
	03:39			SUB IN: MULDROW,TEANA
	03:39			SUB OUT: RAY,CHANIA
	03:39			SUB OUT: MONTGOMERY,LANAY
TURNOVER by CHRISTOPHER,JAYDE	03:26			
	03:15	11-8	H 3	GOOD! JUMPER by MARTIN,TYNICE [PNT]
MISSED JUMPER by ROBERTSON,AISIA	02:52			
	02:52			BLOCK by HOLMES,BRIA
	02:50			REBOUND (DEF) by HOLMES,BRIA
	02:46	13-8	H 5	GOOD! LAYUP by MARTIN,TYNICE [FB/PNT]
	02:46			ASSIST by HOLMES,BRIA
	02:25			FOUL by MORTON,JESSICA
GOOD! FT by CHEADLE,CHAYLA	02:25	13-9	H 4	
MISSED FT by CHEADLE,CHAYLA	02:25			
	02:25			REBOUND (DEF) by MARTIN,TYNICE
SUB IN: ALDRIDGE,LAUREN	02:25			
SUB IN: KOPATICH,KYLEE	02:25			
SUB OUT: CHRISTOPHER,JAYDE	02:25			
SUB OUT: ROBERTSON,AISIA	02:25			
	02:14	15-9	H 6	GOOD! JUMPER by MORTON,JESSICA [PNT]
MISSED JUMPER by KOPATICH,KYLEE	02:00			
	02:00			BLOCK by HOLMES,BRIA
REBOUND (OFF) by O'NEAL,TIMEKA	01:58			
MISSED 3PTR by ALDRIDGE,LAUREN	01:53			
REBOUND (OFF) by CHEADLE,CHAYLA	01:53			
MISSED JUMPER by KOPATICH,KYLEE	01:32			
	01:32			BLOCK by ROBERSON,ARIELLE
REBOUND (OFF) by TEAM	01:32			
SUB IN: MANNINGALLEN,CAELYNN	01:28			
SUB OUT: JOHNSON,TYLER	01:28			
	01:28			SUB IN: BREWER,ALEXIS
	01:28			SUB OUT: HOLMES,BRIA
TURNOVER by TEAM	01:17			
	01:04			MISSED 3PTR by BREWER,ALEXIS
REBOUND (DEF) by KOPATICH,KYLEE	01:04			
TURNOVER by ALDRIDGE,LAUREN	00:53			

VISITORS: Kansas	Time	Score	Margin	HOME: West Virginia
	00:50			STEAL by BREWER,ALEXIS
	00:43			MISSED JUMPER by MARTIN,TYNICE
REBOUND (DEF) by CHEADLE,CHAYLA	00:43			
SUB IN: ROBERTSON,AISIA	00:31			
SUB OUT: O'NEAL,TIMEKA	00:31			
TURNOVER by MANNINGALLEN,CAELYNN	00:30			
	00:16			TURNOVER by MARTIN,TYNICE
	00:16			FOUL by MARTIN,TYNICE
TURNOVER by TEAM	00:16			
	00:08			MISSED 3PTR by MORTON,JESSICA
REBOUND (DEF) by ROBERTSON,AISIA	00:08			
MISSED 3PTR by ALDRIDGE,LAUREN	00:00			
	00:00			REBOUND (DEF) by TEAM

Kansas 9, West Virginia 15

Period 1-only	In Paint	Off T/O	2nd Chance	Fast Break	Bench	
KU	2	2	0	2	0	Score tied - 0 times
WVU	12	4	2	2	6	Lead changed - 4 times

Kansas vs West Virginia
1/16/2016; 7:00 p.m. at WVU Coliseum, Morgantown, W.Va.
Period 2 Play-By-Play

VISITORS: Kansas	Time	Score	Margin	HOME: West Virginia
SUB IN: MANNINGALLEN,CAELYNN	10:00			
SUB IN: ROBERTSON,AISIA	10:00			
SUB OUT: O'NEAL,TIMEKA	10:00			
SUB OUT: JOHNSON,TYLER	10:00			
	10:00			SUB IN: MORTON,JESSICA
	10:00			SUB IN: MULDROW,TEANA
	10:00			SUB IN: BREWER,ALEXIS
	10:00			SUB OUT: RAY,CHANIA
	10:00			SUB OUT: PARDEE,KATRINA
	10:00			SUB OUT: ROBERSON,ARIELLE
	09:46			MISSED 3PTR by MULDROW,TEANA
REBOUND (DEF) by ROBERTSON,AISIA	09:46			
MISSED JUMPER by MANNINGALLEN,CAELYNN	09:30			
	09:30			REBOUND (DEF) by MONTGOMERY,LANAY
	09:09			MISSED 3PTR by HOLMES,BRIA
REBOUND (DEF) by ROBERTSON,AISIA	09:09			
TURNOVER by ALDRIDGE,LAUREN	08:39			
	08:38			STEAL by BREWER,ALEXIS
	08:31			MISSED JUMPER by MORTON,JESSICA
BLOCK by MANNINGALLEN,CAELYNN	08:31			
	08:30			REBOUND (OFF) by HOLMES,BRIA
	08:22	18-9	H 9	GOOD! 3PTR by MORTON,JESSICA
GOOD! LAYUP by MANNINGALLEN,CAELYNN [PNT]	07:57	18-11	H 7	
FOUL by MANNINGALLEN,CAELYNN	07:39			
	07:39			MISSED FT by MULDROW,TEANA
	07:39			REBOUND (DEADB) by TEAM
	07:39	19-11	H 8	GOOD! FT by MULDROW,TEANA
SUB IN: JOHNSON,TYLER	07:39			
SUB IN: BROWN,JADA	07:39			
SUB OUT: MANNINGALLEN,CAELYNN	07:39			
SUB OUT: CHEADLE,CHAYLA	07:39			
	07:39			SUB IN: PARDEE,KATRINA
	07:39			SUB IN: RAY,CHANIA
	07:39			SUB OUT: MORTON,JESSICA
	07:39			SUB OUT: BREWER,ALEXIS
MISSED JUMPER by ROBERTSON,AISIA	07:20			
	07:20			BLOCK by MULDROW,TEANA
REBOUND (OFF) by BROWN,JADA	07:18			
MISSED 3PTR by KOPATICH,KYLEE	07:14			
	07:14			REBOUND (DEF) by MONTGOMERY,LANAY
	07:09	21-11	H 10	GOOD! LAYUP by HOLMES,BRIA [FB/PNT]
MISSED JUMPER by KOPATICH,KYLEE	06:50			
	06:50			REBOUND (DEF) by HOLMES,BRIA
	06:44	23-11	H 12	GOOD! LAYUP by MULDROW,TEANA [FB/PNT]
	06:44			ASSIST by HOLMES,BRIA
TIMEOUT 30SEC	06:43			
SUB IN: O'NEAL,TIMEKA	06:43			
SUB OUT: ROBERTSON,AISIA	06:43			
	06:43			SUB IN: ROBERSON,ARIELLE
	06:43			SUB OUT: MULDROW,TEANA
TURNOVER by TEAM	06:12			
	05:58			TURNOVER by MONTGOMERY,LANAY
TURNOVER by KOPATICH,KYLEE	05:48			

VISITORS: Kansas	Time	Score	Margin	HOME: West Virginia
FOUL by KOPATICH,KYLEE	05:48			
	05:27			TURNOVER by PARDEE,KATRINA
STEAL by O'NEAL,TIMEKA	05:25			
TURNOVER by KOPATICH,KYLEE	05:02			
	05:02			SUB IN: MARTIN,TYNICE
	05:02			SUB OUT: PARDEE,KATRINA
	04:50			TURNOVER by MONTGOMERY,LANAY
TURNOVER by O'NEAL,TIMEKA	04:49			
	04:49			STEAL by HOLMES,BRIA
SUB IN: CHRISTOPHER,JAYDE	04:49			
SUB OUT: O'NEAL,TIMEKA	04:49			
	04:38	25-11	H 14	GOOD! LAYUP by MONTGOMERY,LANAY [PNT]
TURNOVER by JOHNSON,TYLER	04:12			
	03:58	27-11	H 16	GOOD! JUMPER by MARTIN,TYNICE
TURNOVER by CHRISTOPHER,JAYDE	03:22			
	03:19			STEAL by MARTIN,TYNICE
	03:17	29-11	H 18	GOOD! LAYUP by HOLMES,BRIA [FB/PNT]
	03:17			ASSIST by MARTIN,TYNICE
FOUL by BROWN,JADA	03:17			
	03:17	30-11	H 19	GOOD! FT by HOLMES,BRIA
SUB IN: ROBERTSON,AISIA	03:17			
SUB OUT: CHRISTOPHER,JAYDE	03:17			
MISSED 3PTR by KOPATICH,KYLEE	02:55			
	02:55			REBOUND (DEF) by HOLMES,BRIA
	02:45			MISSED LAYUP by RAY,CHANIA
	02:45			REBOUND (OFF) by MONTGOMERY,LANAY
FOUL by ROBERTSON,AISIA	02:43			
	02:43	31-11	H 20	GOOD! FT by MONTGOMERY,LANAY
	02:43	32-11	H 21	GOOD! FT by MONTGOMERY,LANAY
SUB IN: CHEADLE,CHAYLA	02:43			
SUB OUT: BROWN,JADA	02:43			
	02:43			SUB IN: MORTON,JESSICA
	02:43			SUB IN: MULDROW,TEANA
	02:43			SUB OUT: ROBERSON,ARIELLE
	02:43			SUB OUT: RAY,CHANIA
GOOD! LAYUP by CHEADLE,CHAYLA [PNT]	02:28	32-13	H 19	
ASSIST by JOHNSON,TYLER	02:28			
	02:13			TURNOVER by MARTIN,TYNICE
TURNOVER by ALDRIDGE,LAUREN	02:05			
FOUL by JOHNSON,TYLER	01:52			
	01:52			MISSED FT by MONTGOMERY,LANAY
	01:52			REBOUND (DEADB) by TEAM
	01:52			MISSED FT by MONTGOMERY,LANAY
REBOUND (DEF) by KOPATICH,KYLEE	01:52			
	01:37			FOUL by MARTIN,TYNICE
MISSED FT by CHEADLE,CHAYLA	01:37			
REBOUND (DEADB) by TEAM	01:37			
MISSED FT by CHEADLE,CHAYLA	01:37			
	01:37			REBOUND (DEF) by MONTGOMERY,LANAY
	01:37			SUB IN: BREWER,ALEXIS
	01:37			SUB OUT: MARTIN,TYNICE
	01:20			MISSED 3PTR by MORTON,JESSICA
REBOUND (DEF) by KOPATICH,KYLEE	01:20			
MISSED 3PTR by CHEADLE,CHAYLA	01:09			
	01:09			REBOUND (DEF) by HOLMES,BRIA
	00:59			TURNOVER by MORTON,JESSICA
STEAL by ALDRIDGE,LAUREN	00:58			
MISSED LAYUP by ROBERTSON,AISIA	00:52			

VISITORS: Kansas	Time	Score	Margin	HOME: West Virginia
	00:52			BLOCK by MONTGOMERY,LANAY
	00:50			REBOUND (DEF) by MONTGOMERY,LANAY
	00:49			TIMEOUT 30SEC
	00:25			MISSED JUMPER by MORTON,JESSICA
BLOCK by ROBERTSON,AISIA	00:25			
REBOUND (DEF) by KOPATICH,KYLEE	00:22			
	00:22			FOUL by MULDROW,TEANA
MISSED FT by KOPATICH,KYLEE	00:22			
REBOUND (DEADB) by TEAM	00:22			
GOOD! FT by KOPATICH,KYLEE	00:22	32-14	H 18	
	00:22			SUB IN: RAY,CHANIA
	00:22			SUB OUT: MORTON,JESSICA
	00:03			MISSED 3PTR by BREWER,ALEXIS
BLOCK by KOPATICH,KYLEE	00:03			
	00:03			REBOUND (OFF) by TEAM
	00:02			MISSED 3PTR by MULDROW,TEANA
	00:02			REBOUND (OFF) by RAY,CHANIA

Kansas 14, West Virginia 32

Period 2-only	In Paint	Off T/O	2nd Chance	Fast Break	Bench	
KU	4	0	0	0	2	Score tied - 0 times
WVU	8	10	5	6	8	Lead changed - 0 times

Official Basketball Box Score -- Game Totals -- Second Half Statistics

Kansas vs West Virginia

1/16/2016 7:00 p.m. at WVU Coliseum, Morgantown, W.Va.

Kansas 21 • 5-12, 0-6

##	Player	S	Total			3-Ptr			Rebounds			PF	TP	A	TO	Blk	Stl	Min
			FG-FGA	3PT	FG-FGA	FT-FTA	Off Reb	Def Reb	Tot Reb									
03	ALDRIDGE,LAUREN	g	3-8	1-3	0-0	0	0	0	0	7	0	2	0	0	0	0	18	
12	O'NEAL,TIMEKA	g	0-2	0-0	0-0	0	0	0	0	0	0	1	0	1	0	9		
22	CHEADLE,CHAYLA	g	0-3	0-0	0-0	1	0	1	3	0	0	0	0	0	0	8		
33	KOPATICH,KYLEE	g	1-6	0-0	4-4	0	3	3	2	6	1	1	0	0	0	15		
55	JOHNSON,TYLER	f	1-1	0-0	0-0	0	0	0	2	2	0	0	2	0	0	9		
04	BROWN,JADA		0-4	0-0	0-0	0	0	0	2	0	0	1	0	0	12			
15	ROBERTSON,AISIA		0-0	0-0	0-0	0	2	2	2	0	0	2	0	1	9			
20	CHRISTOPHER,JAYDE		0-1	0-0	2-2	0	0	0	0	2	0	0	0	1	9			
25	MANNINGALLEN,CAELYI		2-3	0-0	0-0	6	2	8	2	4	0	2	0	0	11			
TEAM						1	2	3	0			1						
Totals			7-28	1-3	6-6	8	9	17	13	21	1	10	2	3	100			

FG %	3rd Qtr	4-12	33.3%	4th Qtr	3-16	18.8%	Half:	7-28	25.0%
3FG %	3rd Qtr	1-1	100.0%	4th Qtr	0-2	00.0%	Half:	1-3	20.0%
FT %	3rd Qtr	4-4	100.0%	4th Qtr	2-2	100.0%	Half:	6-6	100.0%

West Virginia 40 • 15-4, 4-2

##	Player	S	Total			3-Ptr			Rebounds			PF	TP	A	TO	Blk	Stl	Min
			FG-FGA	3PT	FG-FGA	FT-FTA	Off Reb	Def Reb	Tot Reb									
12	RAY,CHANIA	g	0-1	0-1	0-0	0	1	1	0	0	3	1	0	0	0	9		
15	MONTGOMERY,LANAY	c	2-3	0-0	2-2	4	4	8	0	6	1	0	1	1	12			
22	PARDEE,KATRINA	g	0-2	0-1	0-0	0	0	0	2	0	0	0	0	1	5			
23	HOLMES,BRIA	g	3-6	0-0	1-2	1	0	1	1	7	3	2	0	0	14			
32	ROBERSON,ARIELLE	f	1-1	0-0	0-4	0	4	4	1	2	0	0	0	1	10			
02	BREWER,ALEXIS		2-3	1-2	0-0	1	1	2	1	5	1	0	0	0	8			
03	SEGGIE,OLIVIA		0-0	0-0	0-0	0	0	0	0	0	0	0	0	0	3			
05	MARTIN,TYNICE		5-7	0-1	2-2	0	0	0	0	12	1	0	0	1	12			
11	MULDROW,TEANA		3-6	0-1	1-2	0	1	1	0	7	0	0	1	0	11			
20	RHODES,DESIREE		0-0	0-0	1-2	0	0	0	2	1	1	1	0	0	5			
21	MORTON,JESSICA		0-2	0-0	0-0	1	1	2	1	0	0	1	2	0	8			
24	MARTIN,ANJA		0-0	0-0	0-0	0	0	0	0	0	0	0	0	0	3			
TEAM						2	1	3	0			0						
Totals			16-31	1-6	7-14	9	13	22	8	40	10	5	4	4	100			

FG %	3rd Qtr	8-16	50.0%	4th Qtr	8-15	53.3%	Half:	16-31	51.6%
3FG %	3rd Qtr	0-4	00.0%	4th Qtr	1-2	50.0%	Half:	1-6	09.1%
FT %	3rd Qtr	2-7	28.6%	4th Qtr	5-7	71.4%	Half:	7-14	50.0%

Officials: Dee Kantner, Beverly Roberts, Mark Zentz
 Technical Fouls: Kansas- None. West Virginia- None.
 Start Time: 7:05 End Time: 8:51

Score by periods	1st	2nd	3rd	4th	Total
Kansas	9	5	13	8	35
West Virginia	15	17	18	22	72

Points	In Paint	Off T/O	2nd Chance	Fast Break	Bench
KU	10	0	9	0	6
	24	7	6	4	25

Last FG - KU 4th-04:42, WVU 4th-01:39.
 KU led for 0:00. WVU led for 19:59. Game was tied for 0:00.

Score tied - 0 times
 Lead changed - 0 times

Kansas vs West Virginia
1/16/2016; 7:00 p.m. at WVU Coliseum, Morgantown, W.Va.
Period 3 Play-By-Play

VISITORS: Kansas	Time	Score	Margin	HOME: West Virginia
TURNOVER by O'NEAL,TIMEKA	09:43			
	09:42			STEAL by ROBERSON,ARIELLE
	09:38	34-14	H 20	GOOD! LAYUP by HOLMES,BRIA [FB/PNT]
	09:38			ASSIST by RAY,CHANIA
GOOD! JUMPER by ALDRIDGE,LAUREN [PNT]	09:06	34-16	H 18	
	08:50			MISSED 3PTR by PARDEE,KATRINA
	08:50			REBOUND (OFF) by TEAM
FOUL by CHEADLE,CHAYLA	08:48			
FOUL by CHEADLE,CHAYLA	08:45			
	08:34			MISSED JUMPER by MONTGOMERY,LANAY
	08:34			REBOUND (OFF) by MONTGOMERY,LANAY
	08:17			TURNOVER by RAY,CHANIA
STEAL by O'NEAL,TIMEKA	08:15			
MISSED JUMPER by O'NEAL,TIMEKA	07:57			
	07:57			REBOUND (DEF) by ROBERSON,ARIELLE
	07:49	36-16	H 20	GOOD! LAYUP by MONTGOMERY,LANAY [PNT]
	07:49			ASSIST by HOLMES,BRIA
	07:33			FOUL by PARDEE,KATRINA
GOOD! FT by KOPATICH,KYLEE	07:33	36-17	H 19	
GOOD! FT by KOPATICH,KYLEE	07:33	36-18	H 18	
SUB IN: MANNINGALLEN,CAELYNN	07:33			
SUB IN: CHRISTOPHER,JAYDE	07:33			
SUB IN: BROWN,JADA	07:33			
SUB OUT: O'NEAL,TIMEKA	07:33			
SUB OUT: CHEADLE,CHAYLA	07:33			
SUB OUT: JOHNSON,TYLER	07:33			
	07:33			SUB IN: MARTIN,TYNICE
	07:33			SUB OUT: PARDEE,KATRINA
	07:19			MISSED 3PTR by MARTIN,TYNICE
	07:19			REBOUND (OFF) by MONTGOMERY,LANAY
	07:01			TURNOVER by HOLMES,BRIA
	07:01			FOUL by HOLMES,BRIA
	06:51			FOUL by ROBERSON,ARIELLE
TURNOVER by MANNINGALLEN,CAELYNN	06:39			
	06:26			TURNOVER by HOLMES,BRIA
STEAL by CHRISTOPHER,JAYDE	06:25			
TURNOVER by ALDRIDGE,LAUREN	06:20			
	06:18			STEAL by MARTIN,TYNICE
	06:16	38-18	H 20	GOOD! LAYUP by MARTIN,TYNICE [FB/PNT]
TURNOVER by KOPATICH,KYLEE	05:51			
FOUL by KOPATICH,KYLEE	05:51			
	05:51			SUB IN: MORTON,JESSICA
	05:51			SUB IN: MULDROW,TEANA
	05:51			SUB OUT: RAY,CHANIA
	05:51			SUB OUT: ROBERSON,ARIELLE
	05:39			MISSED JUMPER by MARTIN,TYNICE
REBOUND (DEF) by KOPATICH,KYLEE	05:39			
MISSED LAYUP by BROWN,JADA	05:25			
	05:25			REBOUND (DEF) by MONTGOMERY,LANAY
	05:15	40-18	H 22	GOOD! JUMPER by MULDROW,TEANA
	05:15			ASSIST by MARTIN,TYNICE
MISSED JUMPER by CHRISTOPHER,JAYDE	04:46			
REBOUND (OFF) by MANNINGALLEN,CAELYNN	04:46			

VISITORS: Kansas	Time	Score	Margin	HOME: West Virginia
MISSED JUMPER by MANNINGALLEN,CAELYNN	04:42			
	04:42			REBOUND (DEF) by MONTGOMERY,LANAY
	04:22	42-18	H 24	GOOD! JUMPER by MARTIN,TYNICE [PNT]
MISSED JUMPER by KOPATICH,KYLEE	03:58			
REBOUND (OFF) by MANNINGALLEN,CAELYNN	03:58			
GOOD! 3PTR by ALDRIDGE,LAUREN	03:47	42-21	H 21	
	03:29	44-21	H 23	GOOD! JUMPER by MARTIN,TYNICE
FOUL by KOPATICH,KYLEE	03:29			
	03:29			TIMEOUT MEDIA
	03:29	45-21	H 24	GOOD! FT by MARTIN,TYNICE
SUB IN: CHEADLE,CHAYLA	03:29			
SUB IN: JOHNSON,TYLER	03:29			
SUB OUT: MANNINGALLEN,CAELYNN	03:29			
SUB OUT: BROWN,JADA	03:29			
	03:29			SUB IN: BREWER,ALEXIS
	03:29			SUB IN: ROBERSON,ARIELLE
	03:29			SUB OUT: MONTGOMERY,LANAY
	03:29			SUB OUT: MARTIN,TYNICE
	03:08			FOUL by MORTON,JESSICA
MISSED JUMPER by KOPATICH,KYLEE	03:02			
	03:02			REBOUND (DEF) by BREWER,ALEXIS
	02:57	47-21	H 26	GOOD! LAYUP by ROBERSON,ARIELLE [PNT]
	02:57			ASSIST by HOLMES,BRIA
	02:46			FOUL by BREWER,ALEXIS
GOOD! FT by KOPATICH,KYLEE	02:46	47-22	H 25	
GOOD! FT by KOPATICH,KYLEE	02:46	47-23	H 24	
	02:46			SUB IN: MARTIN,TYNICE
	02:46			SUB OUT: HOLMES,BRIA
	02:24			MISSED JUMPER by MULDROW,TEANA
BLOCK by JOHNSON,TYLER	02:24			
	02:24			REBOUND (OFF) by TEAM
FOUL by CHEADLE,CHAYLA	02:19			
	02:19			MISSED FT by ROBERSON,ARIELLE
	02:19			REBOUND (DEADB) by TEAM
	02:19			MISSED FT by ROBERSON,ARIELLE
REBOUND (DEF) by KOPATICH,KYLEE	02:19			
SUB IN: BROWN,JADA	02:19			
SUB OUT: CHEADLE,CHAYLA	02:19			
GOOD! LAYUP by JOHNSON,TYLER [PNT]	02:08	47-25	H 22	
ASSIST by KOPATICH,KYLEE	02:08			
	01:43			MISSED 3PTR by MULDROW,TEANA
REBOUND (DEF) by TEAM	01:43			
TURNOVER by ALDRIDGE,LAUREN	01:38			
FOUL by JOHNSON,TYLER	01:32			
	01:32			MISSED FT by MULDROW,TEANA
	01:32			REBOUND (DEADB) by TEAM
	01:32	48-25	H 23	GOOD! FT by MULDROW,TEANA
TURNOVER by TEAM	01:32			
SUB IN: ROBERTSON,AISIA	01:32			
SUB OUT: CHRISTOPHER,JAYDE	01:32			
	01:27			TURNOVER by MORTON,JESSICA
STEAL by ROBERTSON,AISIA	01:26			
MISSED LAYUP by BROWN,JADA	01:09			
	01:09			REBOUND (DEF) by ROBERSON,ARIELLE
FOUL by BROWN,JADA	01:08			
	01:08			MISSED FT by ROBERSON,ARIELLE
	01:08			REBOUND (DEADB) by TEAM
	01:08			MISSED FT by ROBERSON,ARIELLE

VISITORS: Kansas	Time	Score	Margin	HOME: West Virginia
REBOUND (DEF) by KOPATICH,KYLEE	01:08			
MISSED LAYUP by ALDRIDGE,LAUREN	01:01			
	01:01			BLOCK by MORTON,JESSICA
REBOUND (OFF) by TEAM	01:01			
GOOD! LAYUP by KOPATICH,KYLEE [PNT]	00:43	48-27	H 21	
	00:21			MISSED 3PTR by BREWER,ALEXIS
	00:21			REBOUND (OFF) by MORTON,JESSICA
	00:16			MISSED JUMPER by MORTON,JESSICA
BLOCK by JOHNSON,TYLER	00:16			
	00:15			REBOUND (OFF) by BREWER,ALEXIS
	00:13	50-27	H 23	GOOD! LAYUP by BREWER,ALEXIS [PNT]

Kansas 35, West Virginia 72

Period 3-only	In Paint	Off T/O	2nd Chance	Fast Break	Bench	
KU	6	0	5	0	0	Score tied - 0 times
WVU	12	5	2	4	12	Lead changed - 0 times

Kansas vs West Virginia
1/16/2016; 7:00 p.m. at WVU Coliseum, Morgantown, W.Va.
Period 4 Play-By-Play

VISITORS: Kansas	Time	Score	Margin	HOME: West Virginia
SUB IN: ROBERTSON,AISIA	10:00			
SUB IN: BROWN,JADA	10:00			
SUB IN: MANNINGALLEN,CAELYNN	10:00			
SUB OUT: O'NEAL,TIMEKA	10:00			
SUB OUT: CHEADLE,CHAYLA	10:00			
SUB OUT: JOHNSON,TYLER	10:00			
	10:00			SUB IN: BREWER,ALEXIS
	10:00			SUB IN: MULDROW,TEANA
	10:00			SUB OUT: PARDEE,KATRINA
	10:00			SUB OUT: ROBERSON,ARIELLE
	09:51			MISSED 3PTR by RAY,CHANIA
	09:51			REBOUND (OFF) by HOLMES,BRIA
	09:46	52-27	H 25	GOOD! LAYUP by HOLMES,BRIA [PNT]
MISSED JUMPER by ALDRIDGE,LAUREN	09:33			
REBOUND (OFF) by MANNINGALLEN,CAELYNN	09:33			
MISSED LAYUP by KOPATICH,KYLEE	09:17			
	09:17			REBOUND (DEF) by RAY,CHANIA
	09:10			MISSED JUMPER by MULDROW,TEANA
	09:10			REBOUND (OFF) by MONTGOMERY,LANAY
FOUL by BROWN,JADA	09:06			
	09:06	53-27	H 26	GOOD! FT by MONTGOMERY,LANAY
	09:06	54-27	H 27	GOOD! FT by MONTGOMERY,LANAY
SUB IN: CHEADLE,CHAYLA	09:06			
SUB OUT: BROWN,JADA	09:06			
MISSED LAYUP by KOPATICH,KYLEE	08:52			
	08:52			REBOUND (DEF) by MONTGOMERY,LANAY
	08:45	57-27	H 30	GOOD! 3PTR by BREWER,ALEXIS
	08:45			ASSIST by RAY,CHANIA
MISSED LAYUP by CHEADLE,CHAYLA	08:30			
REBOUND (OFF) by CHEADLE,CHAYLA	08:30			
MISSED JUMPER by CHEADLE,CHAYLA	08:26			
	08:26			BLOCK by MONTGOMERY,LANAY
	08:25			REBOUND (DEF) by MONTGOMERY,LANAY
	08:18	59-27	H 32	GOOD! LAYUP by MULDROW,TEANA [PNT]
	08:18			ASSIST by HOLMES,BRIA
TIMEOUT 30SEC	08:16			
SUB IN: O'NEAL,TIMEKA	08:16			
SUB OUT: KOPATICH,KYLEE	08:16			
TURNOVER by MANNINGALLEN,CAELYNN	07:58			
	07:56			STEAL by MONTGOMERY,LANAY
	07:52			MISSED JUMPER by HOLMES,BRIA
REBOUND (DEF) by TEAM	07:52			
GOOD! JUMPER by ALDRIDGE,LAUREN	07:42	59-29	H 30	
	07:28	61-29	H 32	GOOD! JUMPER by MULDROW,TEANA [PNT]
	07:28			ASSIST by BREWER,ALEXIS
TURNOVER by ROBERTSON,AISIA	07:10			
SUB IN: KOPATICH,KYLEE	07:10			
SUB OUT: ROBERTSON,AISIA	07:10			
	06:46	63-29	H 34	GOOD! LAYUP by HOLMES,BRIA [PNT]
	06:46			ASSIST by MONTGOMERY,LANAY
MISSED LAYUP by CHEADLE,CHAYLA	06:21			
REBOUND (OFF) by MANNINGALLEN,CAELYNN	06:21			
GOOD! LAYUP by MANNINGALLEN,CAELYNN [PNT]	06:21	63-31	H 32	

VISITORS: Kansas	Time	Score	Margin	HOME: West Virginia
	05:48			MISSED JUMPER by HOLMES,BRIA
	05:48			REBOUND (OFF) by MONTGOMERY,LANAY
	05:42			MISSED JUMPER by HOLMES,BRIA
REBOUND (DEF) by MANNINGALLEN,CAELYNN	05:42			
MISSED LAYUP by ALDRIDGE,LAUREN	05:34			
	05:34			BLOCK by MULDROW,TEANA
REBOUND (OFF) by MANNINGALLEN,CAELYNN	05:23			
MISSED 3PTR by ALDRIDGE,LAUREN	05:18			
	05:18			REBOUND (DEF) by MULDROW,TEANA
	05:09	65-31	H 34	GOOD! LAYUP by MONTGOMERY,LANAY [PNT]
	05:09			ASSIST by RAY,CHANIA
SUB IN: BROWN,JADA	04:49			
SUB OUT: CHEADLE,CHAYLA	04:49			
	04:49			SUB IN: ROBERSON,ARIELLE
	04:49			SUB IN: MARTIN,TYNICE
	04:49			SUB IN: MORTON,JESSICA
	04:49			SUB IN: RHODES,DESIREE
	04:49			SUB OUT: RAY,CHANIA
	04:49			SUB OUT: MONTGOMERY,LANAY
	04:49			SUB OUT: BREWER,ALEXIS
	04:49			SUB OUT: MULDROW,TEANA
MISSED JUMPER by KOPATICH,KYLEE	04:44			
REBOUND (OFF) by MANNINGALLEN,CAELYNN	04:44			
GOOD! LAYUP by MANNINGALLEN,CAELYNN [PNT]	04:42	65-33	H 32	
	04:11			MISSED JUMPER by MORTON,JESSICA
REBOUND (DEF) by MANNINGALLEN,CAELYNN	04:11			
MISSED LAYUP by O'NEAL,TIMEKA	03:46			
	03:46			BLOCK by MORTON,JESSICA
	03:45			REBOUND (DEF) by MORTON,JESSICA
FOUL by MANNINGALLEN,CAELYNN	03:31			
	03:25	67-33	H 34	GOOD! JUMPER by MARTIN,TYNICE [PNT]
FOUL by MANNINGALLEN,CAELYNN	03:25			
	03:25	68-33	H 35	GOOD! FT by MARTIN,TYNICE
SUB IN: ROBERTSON,AISIA	03:25			
SUB IN: CHRISTOPHER,JAYDE	03:25			
SUB OUT: KOPATICH,KYLEE	03:25			
SUB OUT: O'NEAL,TIMEKA	03:25			
MISSED 3PTR by ALDRIDGE,LAUREN	03:16			
	03:16			REBOUND (DEF) by ROBERSON,ARIELLE
FOUL by ROBERTSON,AISIA	03:00			
	03:00			MISSED FT by HOLMES,BRIA
	03:00			REBOUND (DEADB) by TEAM
	03:00	69-33	H 36	GOOD! FT by HOLMES,BRIA
	03:00			SUB IN: PARDEE,KATRINA
	03:00			SUB IN: SEGGIE,OLIVIA
	03:00			SUB OUT: MORTON,JESSICA
	03:00			SUB OUT: HOLMES,BRIA
MISSED LAYUP by BROWN,JADA	02:40			
	02:40			REBOUND (DEF) by ROBERSON,ARIELLE
SUB IN: JOHNSON,TYLER	02:32			
SUB OUT: MANNINGALLEN,CAELYNN	02:32			
	02:32			SUB IN: MARTIN,ANJA
	02:32			SUB OUT: ROBERSON,ARIELLE
FOUL by JOHNSON,TYLER	02:22			
	02:22	70-33	H 37	GOOD! FT by RHODES,DESIREE
	02:22			MISSED FT by RHODES,DESIREE
REBOUND (DEF) by ROBERTSON,AISIA	02:22			
	02:00			FOUL by RHODES,DESIREE

VISITORS: Kansas	Time	Score	Margin	HOME: West Virginia
GOOD! FT by CHRISTOPHER,JAYDE	02:00	70-34	H 36	
GOOD! FT by CHRISTOPHER,JAYDE	02:00	70-35	H 35	
SUB IN: O'NEAL,TIMEKA	02:00			
SUB OUT: ALDRIDGE,LAUREN	02:00			
	01:39	72-35	H 37	GOOD! JUMPER by MARTIN,TYNICE
	01:39			ASSIST by RHODES,DESIREE
	01:16			FOUL by PARDEE,KATRINA
MISSED JUMPER by BROWN,JADA	01:12			
	01:12			REBOUND (DEF) by TEAM
	00:55			MISSED JUMPER by PARDEE,KATRINA
REBOUND (DEF) by ROBERTSON,AISIA	00:55			
TURNOVER by ROBERTSON,AISIA	00:45			
FOUL by ROBERTSON,AISIA	00:45			
	00:31			TURNOVER by RHODES,DESIREE
	00:31			FOUL by RHODES,DESIREE
TURNOVER by BROWN,JADA	00:10			
	00:09			STEAL by PARDEE,KATRINA

Kansas 35, West Virginia 72

Period 4-only	In Paint	Off T/O	2nd Chance	Fast Break	Bench	
KU	4	0	4	0	6	Score tied - 0 times
WVU	12	2	4	0	13	Lead changed - 0 times

Kansas vs West Virginia
1/16/2016; 7:00 p.m. at WVU Coliseum, Morgantown, W.Va.
Scoring/Runs Reference

Period 1			Period 2		
Kansas	Score	West Virginia	Kansas	Score	West Virgi
		TO MONTGOMERY TURN - 09:47		X	MULDROW 3PTR - 09
09:34 - CHEADLE JUMPER	X		09:30 -		
09:25 - O'NEAL 3PTR	X		MANNINGALLEN JUMPER	X	
	0-2 2	2P RAY LAYUP - 09:09		X	HOLMES 3PTR - 09
08:54 - CHEADLE TURN	TO		08:39 - ALDRIDGE TURN	TO	
	X	HOLMES LAYUP - 08:39		X	MORTON JUMPER - 08
	X	HOLMES 3PTR - 08:28		9-18 9	3 MORTON 3PTR - 08
08:12 - ALDRIDGE 3PTR	3 3-2 -1		07:57 - MANNINGALLEN LAYUP	2P 11-18 7	
	X	HOLMES JUMPER - 07:55		X	MULDROW FT - 07
	X	MONTGOMERY JUMPER - 07:53		11-19 8	1 MULDROW FT - 07
07:44 - O'NEAL 3PTR	X		07:20 - ROBERTSON JUMPER	X	
	X	RAY FT - 07:34	07:14 - KOPATICH 3PTR	X	
	3-3 0	1 RAY FT - 07:34	06:50 - KOPATICH JUMPER	X	
07:16 - JOHNSON TURN	TO			11-21 10	2PF HOLMES LAYUP - 07
	3-5 2	2P MONTGOMERY LAYUP - 06:54		11-23 12	2PF MULDROW LAYUP - 06
06:37 - O'NEAL 3PTR	3 6-5 -1		06:12 - TEAM TURN	TO	TO MONTGOMERY TURN - 05
	X	PARDEE 3PTR - 06:25	05:48 - KOPATICH TURN	TO	TO PARDEE TURN - 05
05:45 - MANNINGALLEN JUMPER	X		05:02 - KOPATICH TURN	TO	TO MONTGOMERY TURN - 04
	X	HOLMES JUMPER - 05:38	04:49 - O'NEAL TURN	TO	
	TO	MONTGOMERY TURN - 05:35		11-25 14	2P MONTGOMERY LAYUP - 04
05:29 - KOPATICH LAYUP	2PF 8-5 -3		04:12 - JOHNSON TURN	TO	
	X	MARTIN 3PTR - 05:11		11-27 16	2 MARTIN JUMPER - 03
	8-7 -1	2P MONTGOMERY LAYUP - 04:48	03:22 - CHRISTOPHER TURN	TO	
04:36 - CHRISTOPHER JUMPER	X			11-29 18	2PF HOLMES LAYUP - 03
	X	HOLMES LAYUP - 04:29		11-30 19	1 HOLMES FT - 03
04:20 - ALDRIDGE 3PTR	X		02:55 - KOPATICH 3PTR	X	
	TO	RAY TURN - 04:03		X	RAY LAYUP - 02
03:48 - KOPATICH LAYUP	X			11-31 20	1 MONTGOMERY FT - 02
	8-8 0	1 HOLMES FT - 03:39		11-32 21	1 MONTGOMERY FT - 02
	8-9 1	1 HOLMES FT - 03:39	02:28 - CHEADLE LAYUP	2P 13-32 19	
03:26 - CHRISTOPHER TURN	TO			TO	MARTIN TURN - 02
	8-11 3	2P MARTIN JUMPER - 03:15	02:05 - ALDRIDGE TURN	TO	
02:52 - ROBERTSON JUMPER	X			X	MONTGOMERY FT - 01
	X			X	MONTGOMERY FT - 01
	8-13 9	2PF MARTIN LAYUP - 02:46	01:37 - CHEADLE FT	X	
02:25 - CHEADLE FT	1 9-13 4		01:37 - CHEADLE FT	X	
02:25 - CHEADLE FT	X			X	MORTON 3PTR - 01
	9-15 6	2P MORTON JUMPER - 02:14	01:09 - CHEADLE 3PTR	X	
02:00 - KOPATICH JUMPER	X			TO	MORTON TURN - 00
01:53 - ALDRIDGE 3PTR	X		00:52 - ROBERTSON LAYUP	X	
01:32 - KOPATICH JUMPER	X			X	MORTON JUMPER - 00
01:17 - TEAM TURN	TO		00:22 - KOPATICH FT	X	
			00:22 - KOPATICH FT	1 14-32 18	

Kansas			West Virginia	Kansas			West Virgi
Score				Score			
00:53 - ALDRIDGE TURN	TO	X	BREWER 3PTR - 01:04			X	BREWER 3PTR - 00
						X	MULDROW 3PTR - 00
00:30 - MANNINGALLEN TURN	TO	X	MARTIN JUMPER - 00:43				
00:16 - TEAM TURN	TO		MARTIN TURN - 00:16				
00:00 - ALDRIDGE 3PTR	TO	X	MORTON 3PTR - 00:08				
	Period 3				Period 4		
09:43 - O'NEAL TURN	TO					X	RAY 3PTR - 09
09:06 - ALDRIDGE JUMPER	2P	14-34 20	HOLMES LAYUP - 09:38	09:33 - ALDRIDGE JUMPER	X	27-52 25	HOLMES LAYUP - 09
		16-34 18		09:17 - KOPATICH LAYUP	X		
		X	PARDEE 3PTR - 08:50				
		X	MONTGOMERY JUMPER - 08:34			X	MULDROW JUMPER - 09
	TO		RAY TURN - 08:17	08:52 - KOPATICH LAYUP	X	27-53 26	MONTGOMERY FT - 09
07:57 - O'NEAL JUMPER	X			08:26 - CHEADLE JUMPER	X	27-54 27	MONTGOMERY FT - 09
07:33 - KOPATICH FT	1	16-36 20	MONTGOMERY LAYUP - 07:49	08:30 - CHEADLE LAYUP	X		
07:33 - KOPATICH FT	1	17-36 19		08:26 - CHEADLE JUMPER	X	27-57 30	BREWER 3PTR - 08
		18-36 18		07:58 - MANNINGALLEN TURN	TO		
		X	MARTIN 3PTR - 07:19			X	HOLMES JUMPER - 07
	TO		HOLMES TURN - 07:01	07:42 - ALDRIDGE JUMPER	2	29-59 30	
06:39 - MANNINGALLEN TURN	TO					29-61 32	MULDROW JUMPER - 07
06:20 - ALDRIDGE TURN	TO		HOLMES TURN - 06:26	07:10 - ROBERTSON TURN	TO		
		18-38 20	MARTIN LAYUP - 06:16			29-63 34	HOLMES LAYUP - 06
05:51 - KOPATICH TURN	TO			06:21 - CHEADLE LAYUP	X		
		X	MARTIN JUMPER - 05:39	06:21 - MANNINGALLEN LAYUP	2P	31-63 32	
05:25 - BROWN LAYUP	X		MULDROW JUMPER - 05:15				X
		18-40 22					X
04:46 - CHRISTOPHER JUMPER	X			05:34 - ALDRIDGE LAYUP	X		
04:42 - MANNINGALLEN JUMPER	X			05:18 - ALDRIDGE 3PTR	X		
		18-42 24	MARTIN JUMPER - 04:22			31-65 34	MONTGOMERY LAYUP - 05
03:58 - KOPATICH JUMPER	X			04:44 - KOPATICH JUMPER	X		
03:47 - ALDRIDGE 3PTR	3	21-42 21	MARTIN JUMPER - 03:29	04:42 - MANNINGALLEN LAYUP	2P	33-65 32	
		21-44 23	MARTIN FT - 03:29				X
		21-45 24		03:46 - O'NEAL LAYUP	X		MORTON JUMPER - 04
03:02 - KOPATICH JUMPER	X		ROBERSON LAYUP - 02:57			33-67 34	MARTIN JUMPER - 03
		21-47 26		03:16 - ALDRIDGE 3PTR	X	33-68 35	MARTIN FT - 03
02:46 - KOPATICH FT	1	22-47 25					
02:46 - KOPATICH FT	1	23-47 24	MULDROW JUMPER - 02:24			33-69 36	HOLMES FT - 03
		X	ROBERSON FT - 02:19	02:40 - BROWN LAYUP	X		HOLMES FT - 03
		X	ROBERSON FT - 02:19			33-70 37	RHODES FT - 02
02:08 - JOHNSON LAYUP	2P	25-47 22	MULDROW 3PTR - 01:43	02:00 - CHRISTOPHER FT	1	34-70 36	RHODES FT - 02
		X	MULDROW FT - 01:32	02:00 - CHRISTOPHER FT	1	35-70 35	
01:38 - ALDRIDGE TURN	TO					35-72 37	MARTIN JUMPER - 01
		X		01:12 - BROWN JUMPER	X		

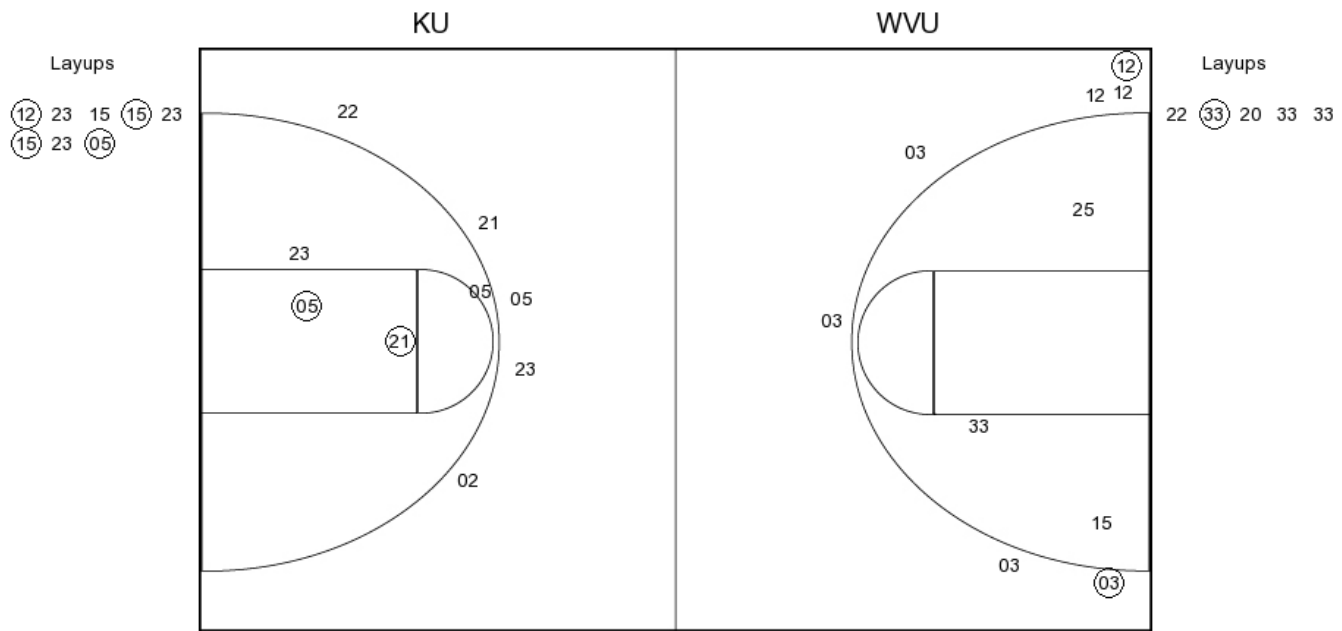
		<input type="checkbox"/> 25-48 <input type="checkbox"/> 23	<input type="checkbox"/> 1	MULDROW FT - 01:32		<input type="checkbox"/> X	PARDEE JUMPER - 00
01:32 - TEAM TURN	TO						
					00:45 - ROBERTSON TURN	TO	
				MORTON TURN - 01:27		TO	RHODES TURN - 00
01:09 - BROWN LAYUP		<input type="checkbox"/> X			00:10 - BROWN TURN	TO	
			<input type="checkbox"/> X	ROBERSON FT - 01:08			
			<input type="checkbox"/> X	ROBERSON FT - 01:08			
01:01 - ALDRIDGE LAYUP		<input type="checkbox"/> X					
00:43 - KOPATICH LAYUP		<input type="checkbox"/> 2 ^P	<input type="checkbox"/> 27-48 <input type="checkbox"/> 21				
			<input type="checkbox"/> X	BREWER 3PTR - 00:21			
			<input type="checkbox"/> X	MORTON JUMPER - 00:16			
		<input type="checkbox"/> 27-50 <input type="checkbox"/> 23	<input type="checkbox"/> 2 ^P	BREWER LAYUP - 00:13			

Kansas vs West Virginia

OFFICIAL SHOT CHART

1/16/2016 at WVU Coliseum, Morgantown, W.Va.

PERIOD 1



KU PERIOD 1

FG Made	5
FG Attempted	24
3PFG Made	2
3PFG Attempted	10

WVU PERIOD 1

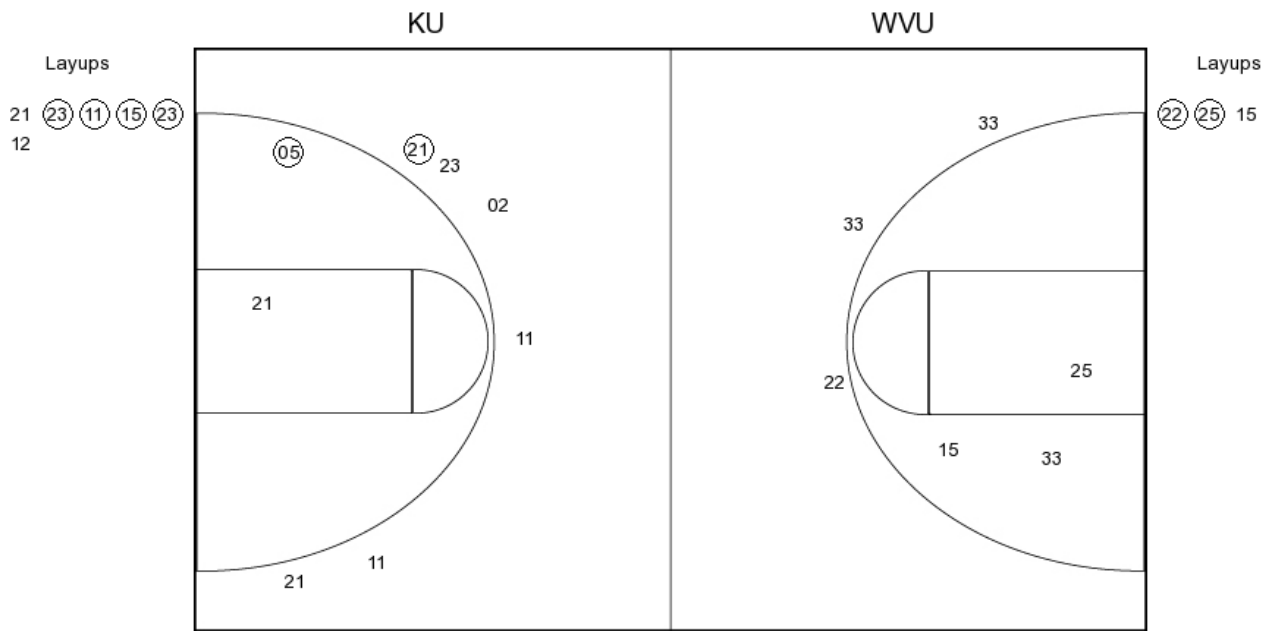
FG Made	12
FG Attempted	31
3PFG Made	1
3PFG Attempted	11

Kansas vs West Virginia

OFFICIAL SHOT CHART

1/16/2016 at WVU Coliseum, Morgantown, W.Va.

PERIOD 2



KU PERIOD 2

FG Made

FG Attempted

3PFG Made

3PFG Attempted

WVU PERIOD 2

FG Made

FG Attempted

3PFG Made

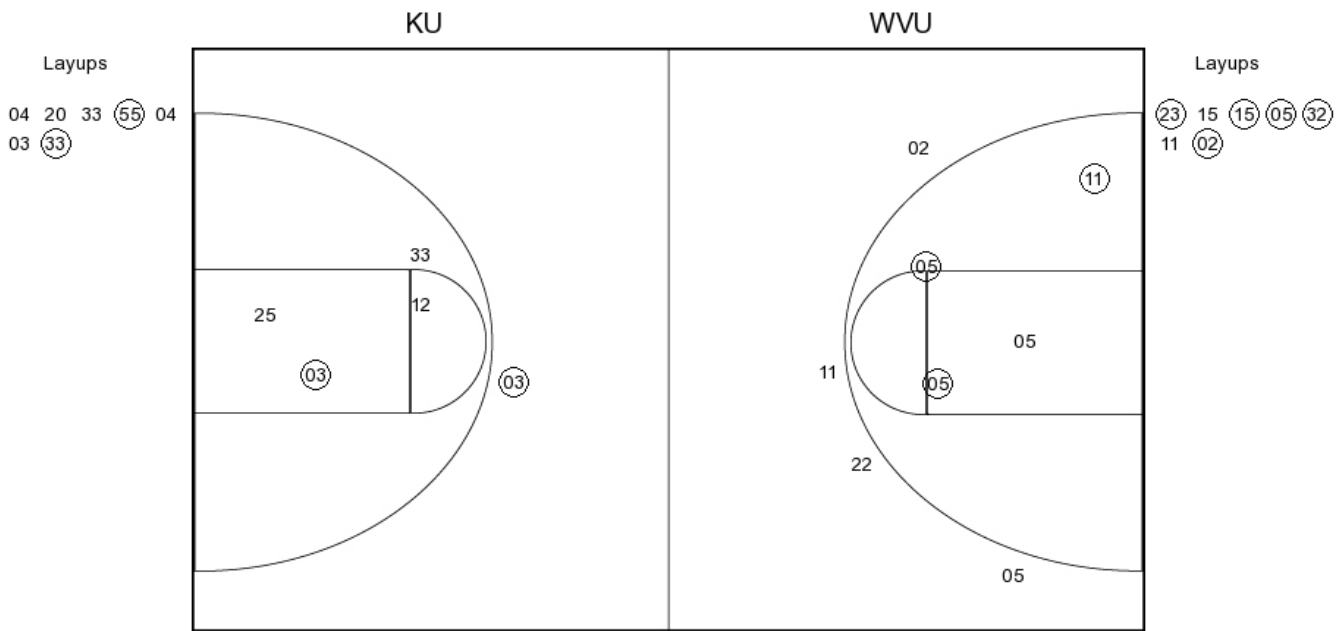
3PFG Attempted

Kansas vs West Virginia

OFFICIAL SHOT CHART

1/16/2016 at WVU Coliseum, Morgantown, W.Va.

PERIOD 3



KU PERIOD 3

FG Made	7
FG Attempted	28
3PFG Made	1
3PFG Attempted	3

WVU PERIOD 3

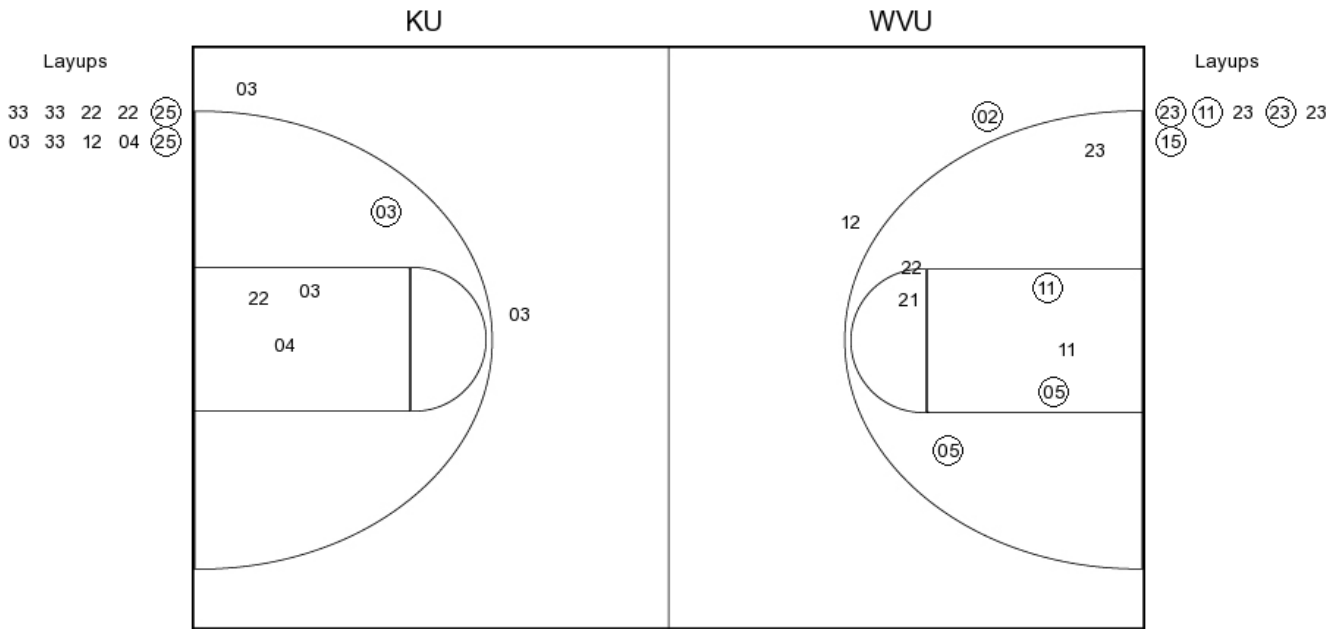
FG Made	16
FG Attempted	31
3PFG Made	1
3PFG Attempted	6

Kansas vs West Virginia

OFFICIAL SHOT CHART

1/16/2016 at WVU Coliseum, Morgantown, W.Va.

PERIOD 4



KU PERIOD 4

FG Made
FG Attempted
3PFG Made
3PFG Attempted

WVU PERIOD 4

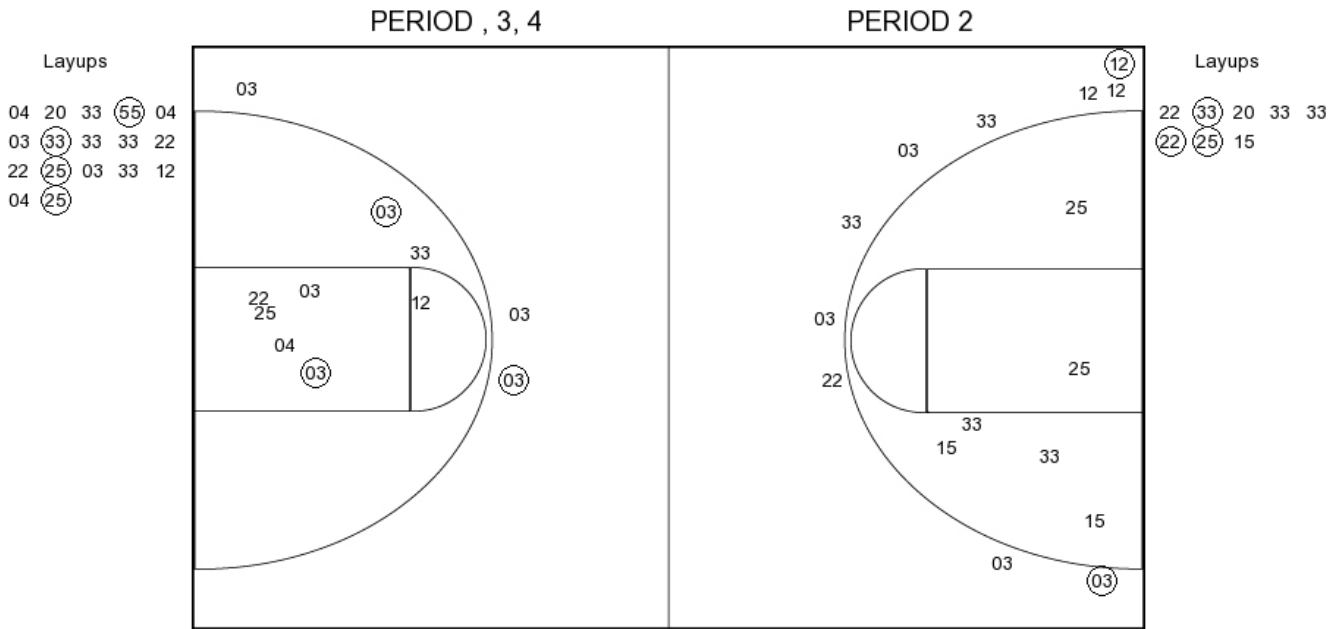
FG Made
FG Attempted
3PFG Made
3PFG Attempted

Kansas vs West Virginia

OFFICIAL SHOT CHART

1/16/2016 at WVU Coliseum, Morgantown, W.Va.

Kansas



KU PERIOD 1

FG Made	5
FG Attempted	24
3PFG Made	2
3PFG Attempted	10

KU PERIOD 2

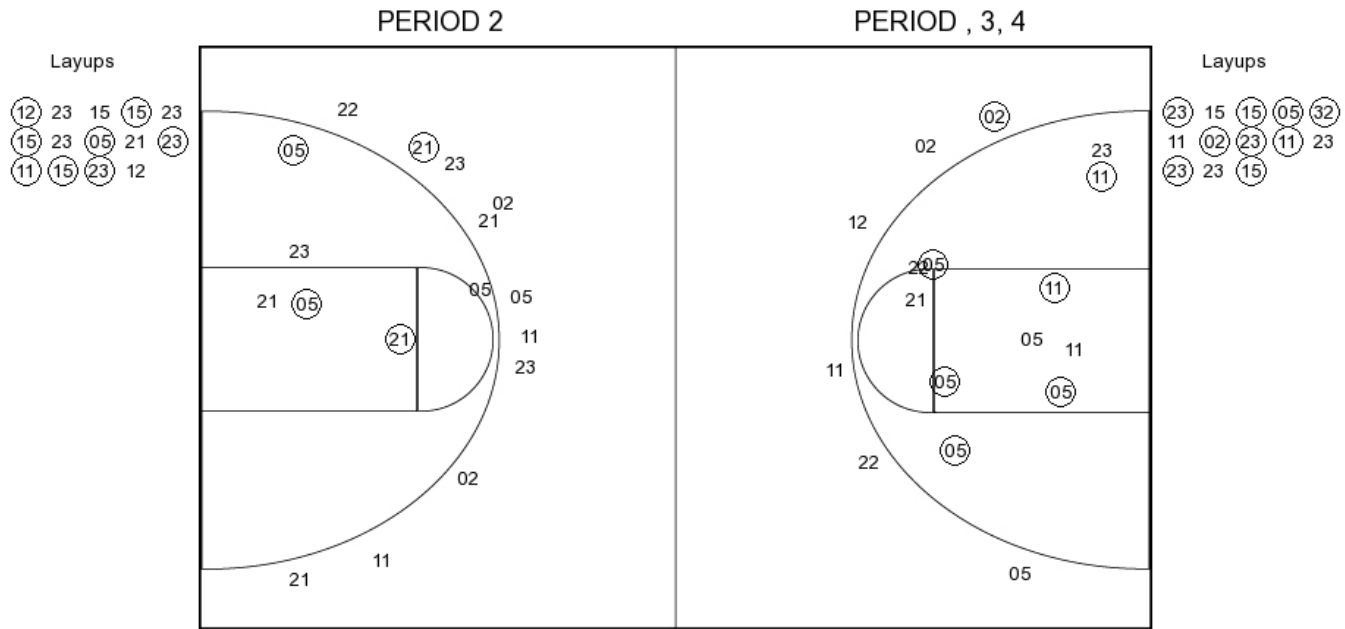
FG Made	
FG Attempted	
3PFG Made	
3PFG Attempted	

Kansas vs West Virginia

OFFICIAL SHOT CHART

1/16/2016 at WVU Coliseum, Morgantown, W.Va.

West Virginia



WVU PERIOD 1

FG Made	12
FG Attempted	31
3PFG Made	1
3PFG Attempted	11

WVU PERIOD 2

FG Made	
FG Attempted	
3PFG Made	
3PFG Attempted	